

**Bean 2 Roof
Addition**

22 Bramhall Street, Portland,
Maine 04102

MEP ENGINEER

AKF ENGINEERS

41 Farnsworth Street, 3rd Floor
Boston, MA 02210
617.733.1111
617.737.4311

STRUCTURAL ENGINEER

SIMPSON GUMPERTZ &
HEGER

41 Seyon Street, Building 1, Suite 500
Waltham, MA 02453
1.781.907.9000
1.781.907.9009

MEDICAL EQUIPMENT PLANNERS

RTKL ASSOCIATES INC.

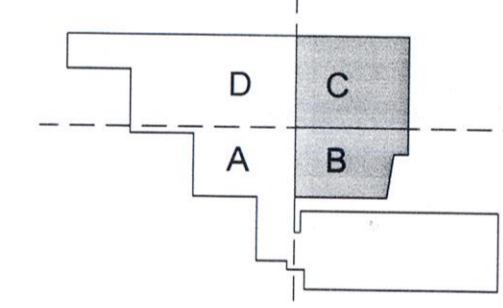
1717 PACIFIC AVENUE
DALLAS, TX 75201
1.214.468.7800
1.214.468.7801

COST ESTIMATOR

DG JONES & PARTNERS

3 Baldwin Green Common, Suite 202
Woburn, MA 01801
1.781.932.3131
1.781.932.3199

**CONSTRUCTION
DOCUMENTS**



Revisions

Issued for Permit	02/07/2014
1 Addendum #3	01/17/2014
NO	ISSUE DATE

Sheet Information

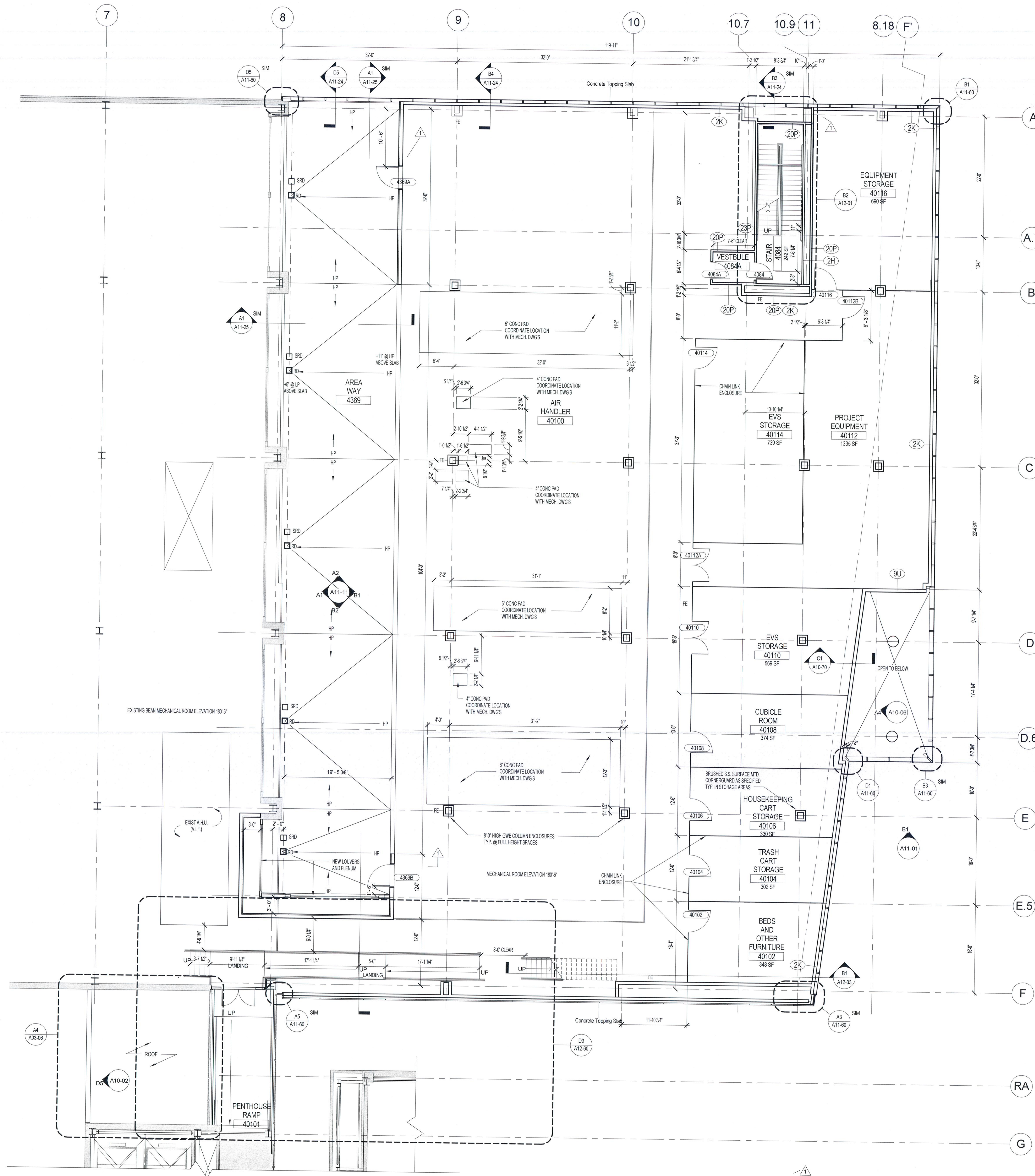
Date: SEPTEMBER 10, 2013
Job #: C140135461 (MMC) / 152168.000
Drawn: Author
Checked: Checker
Approved: Approver

**LEVEL 04
MECHANICAL
OVERALL FLOOR PLAN**

Sheet

A03-05

Copyright © 2011 Perkins+Will



A1 MECHANICAL LEVEL PLAN
1/8" = 1'-0"

