

Revisions

Issued for Permit	02/07/2014
NO.	ISSUE
Sheet Information	
Date	SEPTEMBER 10, 2013
Job #	C140135461 (MMC) / 152168.000
Drawn	TH
Checked	DG
Approved	RA
Title	

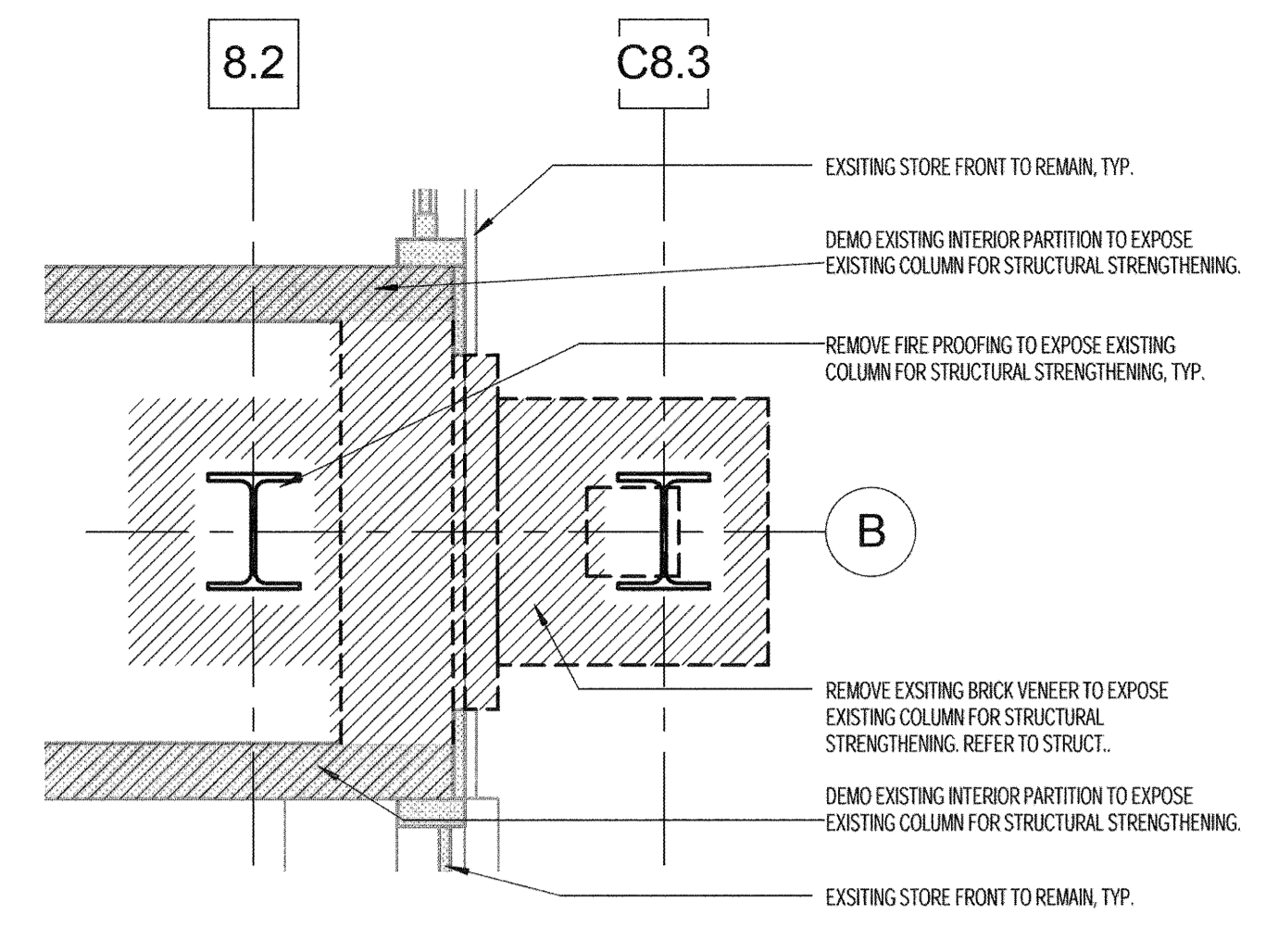
DEMOLITION DETAILS

DEMOLITION LEGEND

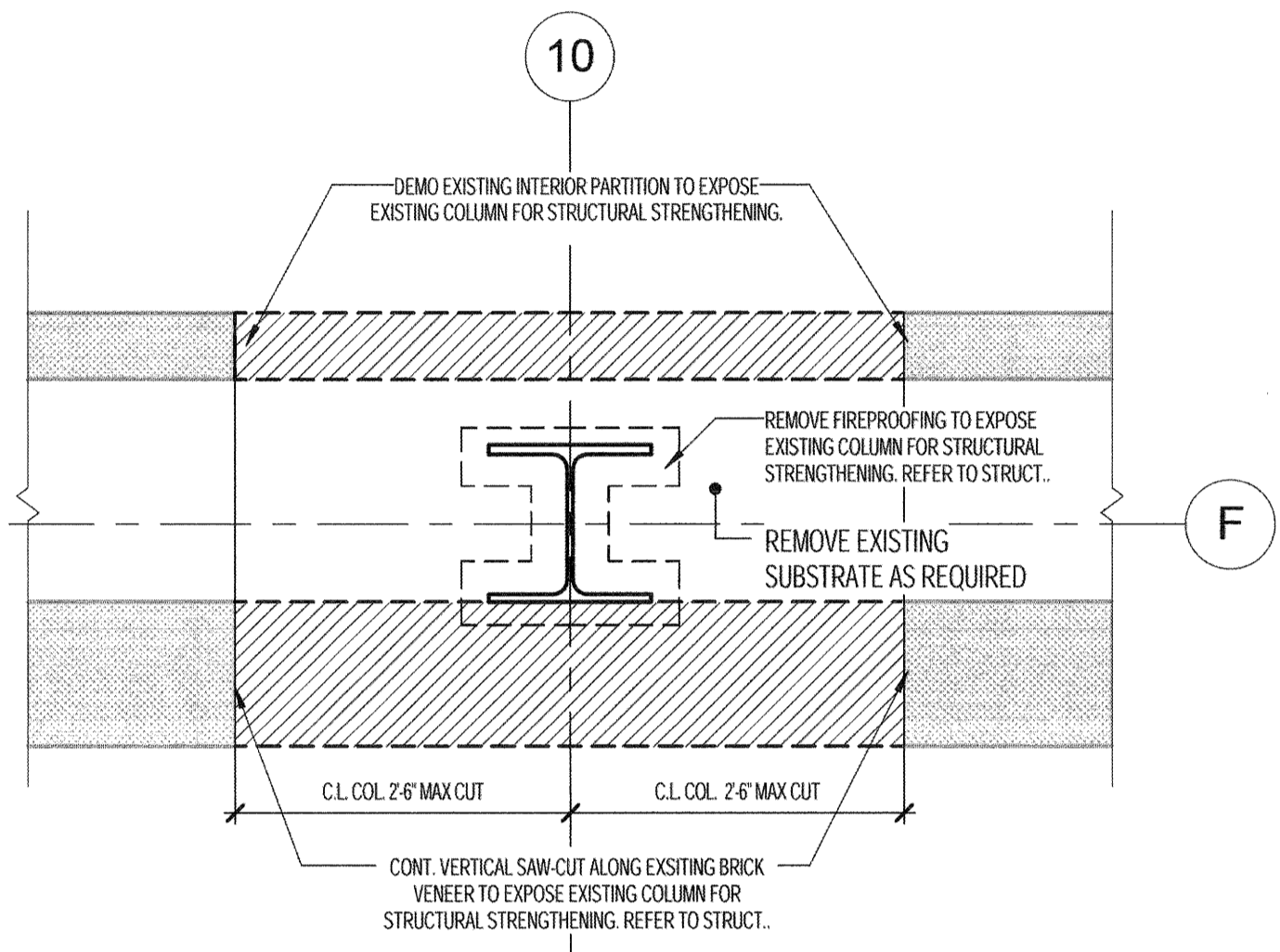
- LIMIT OF WORK
- NOT IN SCOPE OF WORK
- DEMO
- DEMO
- EXISTING TO REMAIN

GENERAL DEMOLITION NOTES

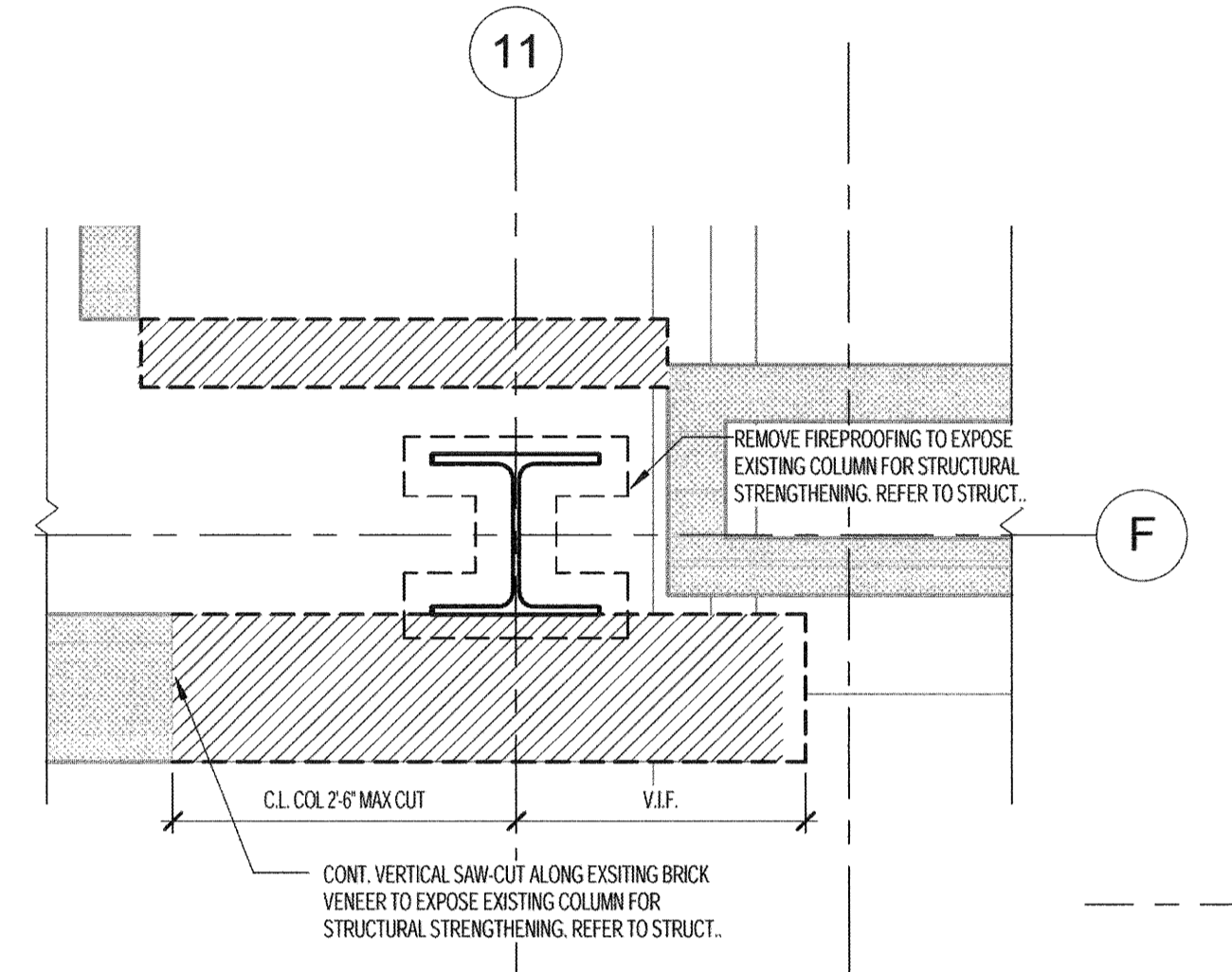
- RATED WALLS AND EGRESS**
EXISTING TO REMAIN FIRE RATED EGRESS STAIR, MAINTAIN SAFE ACCESS THROUGH FROM FLOOR TO FLOOR. EXISTING TO REMAIN FIRE RATED SHAFT, MAINTAIN FIRE RATING THROUGHOUT CONSTRUCTION U/L/N.
- STRUCTURAL STEEL**
EXISTING TO REMAIN STRUCTURAL STEEL AND FIRE PROOFING, PROTECT ALL EXPOSED STRUCTURAL STEEL AND FIRE PROOFING DURING CONSTRUCTION, TYPICAL, U/L/N.
- MEP**
REVIEW AND COORDINATE WITH MEP ENGINEERING TO LOCATE AND SAFEGUARD ALL EXISTING MEP TO REMAIN DURING DEMOLITION, COORDINATE WITH MEP AND FP ALL EXISTING MEP AND FP TO BE REMOVED, CUT, REDIRECTED, CAPPED, ETC., TYPICAL AS DESIGNATED, U/L/N.
- DOORS**
REVIEW AND COORDINATE WITH OWNER OF THE SCOPE OF SALVAGE AND REUSE OF DOORS, U/L/N.
- CONCRETE SLAB**
PREPARATION OF EXISTING SLAB TO INCLUDE SANDING, GRINDING, AND LEVELING AS REQUIRED FOR PROPER INSTALLATION OF NEW FLOOR FINISHES, TYPICAL AT ALL FLOOR LOCATIONS, TYPICAL AS DESIGNATED.
- DEMOLITION KEYNOTES**
- 1 EXISTING TO REMAIN FIRE RATED EGRESS STAIR, MAINTAIN SAFE ACCESS THROUGH FROM FLOOR TO FLOOR. EXISTING TO REMAIN FIRE RATED SHAFT, MAINTAIN FIRE RATING THROUGHOUT CONSTRUCTION TYP AS DESIGN, U/L/N.
 - 2 EXISTING TO REMAIN STRUCTURAL STEEL AND FIRE PROOFING, PROTECT ALL EXPOSED STRUCTURAL STEEL AND FIRE PROOFING DURING CONSTRUCTION, TYPICAL.
 - 3 REMOVE AND DISPOSE OF PARTITION WALL AND ALL ASSOCIATED MATERIAL INCLUDING BUT NOT LIMITED TO SHEATHING, FRAMING, SILLS, HEADS, BASE, ETC., TYPICAL AS DESIGNATED.
 - 4 REMOVE AND DISPOSE OF DOOR, FRAME, GLAZING, AND ALL ASSOCIATED MATERIAL INCLUDING THRESHOLDS, CORNER GUARDS, CAB READERS, TYPICAL AS DESIGNATED.
 - 5 REMOVE AND DISPOSE OF WINDOW FRAME, GLAZING, CURTAIN WALL AND ALL ASSOCIATED MATERIAL INCLUDING FASTENERS, CLIPS, ETC., TYPICAL AS DESIGNATED.
 - 6 REMOVE AND DISPOSE OF FLOORING AND ALL ASSOCIATED MATERIALS SUCH AS MASTICS, GLUES, AND OTHER ADHESIVES, REMOVE AND DISPOSE OF PARTITION AND ALL WALL TILE, FLOOR TILE, COVE BASE, TYPICAL AS DESIGNATED. CUT TO COORDINATE WITH PREPARATION OF EXISTING SLAB TO INCLUDE SANDING, GRINDING, AND LEVELING AS REQUIRED FOR PROPER INSTALLATION OF NEW FLOOR FINISHES, TYPICAL AT ALL FLOOR LOCATIONS, TYPICAL AS DESIGNATED.
 - 7 REMOVE AND DISPOSE OF ALL BATHROOM CASEWORK, CABINETS, SINKS, FIXTURES, AND ALL ASSOCIATED PARTS INCLUDING BUT NOT LIMITED TO STANDARDS, COUNTERTOPS, ACCESSORIES, ETC. TYPICAL AS DESIGNATED. COORDINATE WITH MEP FOR ALL EXISTING WATER AND DRAIN SHUT OFFS, COORDINATE WITH OWNER FOR ANY SALVAGE OF THESE ITEMS.
 - 8 REMOVE AND DISPOSE OF ALL ROOFING AND ASSOCIATED PARTS INCLUDING BUT NOT LIMITED TO RUBBER ROOF SYSTEMS, INSULATION, GUTTERS, PARAPETS, DOWNHEADERS, DRAINS, ETC. TYPICAL AS DESIGNATED. COORDINATE WITH PLUMBING ENGINEER FOR DRAIN DEMOLITION.
 - 9 REMOVE AND DISPOSE OF ALL BRICK VENEER AND ASSOCIATED PARTS INCLUDING BUT NOT LIMITED TO BRICK VENEER, CLIPS, FASTENERS, SHEATHING, AIR AND MOISTURE BARRIERS, ETC. TYPICAL AS DESIGNATED. COORDINATE WITH STRUCTURAL ENGINEER FOR DEMOLITION.
 - 10 REMOVE AND DISPOSE OF ALL CEILING SYSTEMS AND ASSOCIATED PARTS INCLUDING BUT NOT LIMITED TO ACT, FRAMING, CLIPS, FASTENERS, OMB, INSULATION, LIGHTING, FIXTURES, ETC. TYPICAL AS DESIGNATED. COORDINATE WITH OWNER FOR SALVAGE OF THESE ITEMS.
 - 11 SALVAGE EXISTING PATIENT BELONGING LOCKERS. COORDINATE WITH OWNER FOR EXACT LOCATION OF REINSTALLATION.



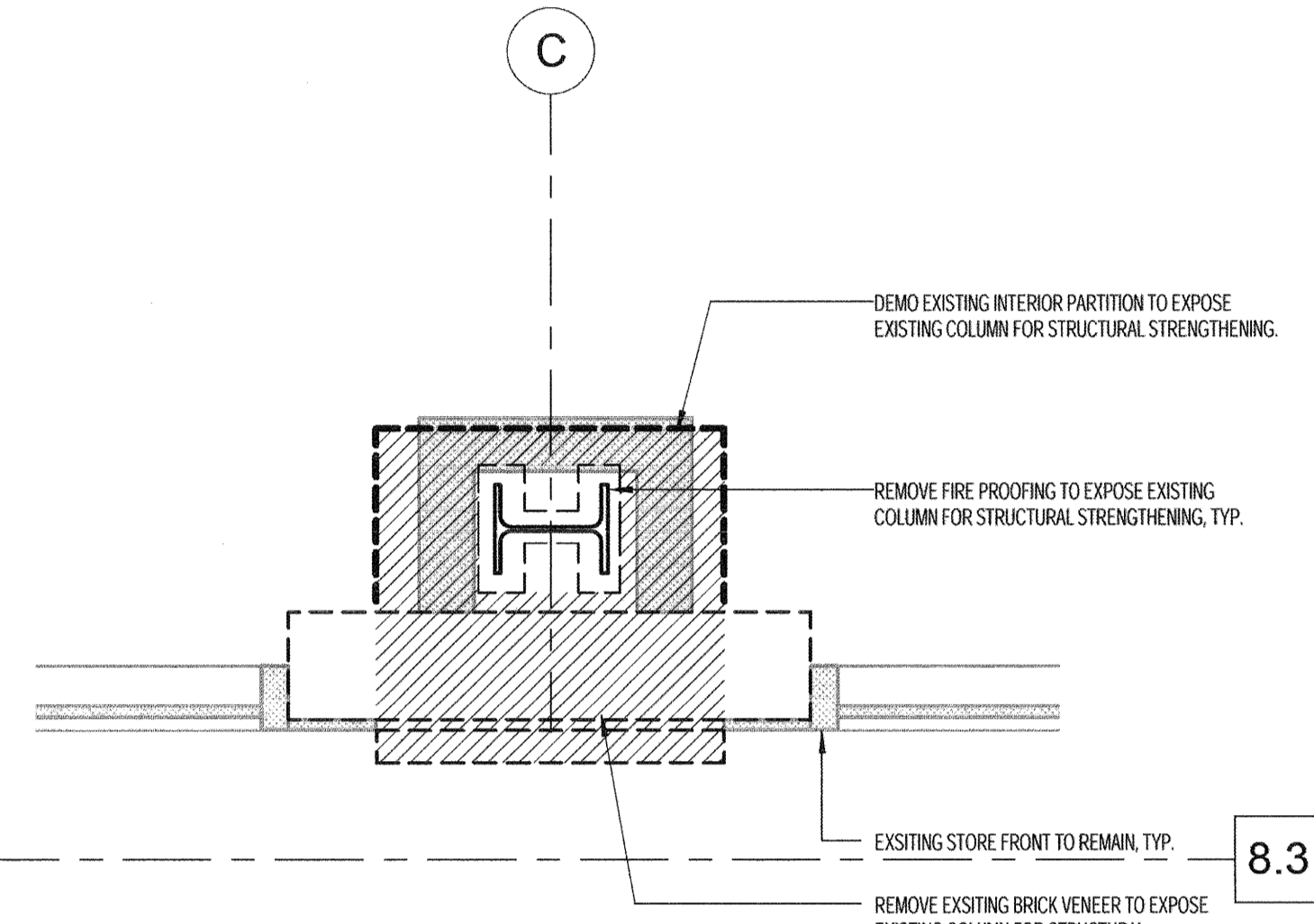
DEMO PLAN SECTION @ EXISTING COLUMN ALONG EAST ELEVATION
3/4" = 1'-0"



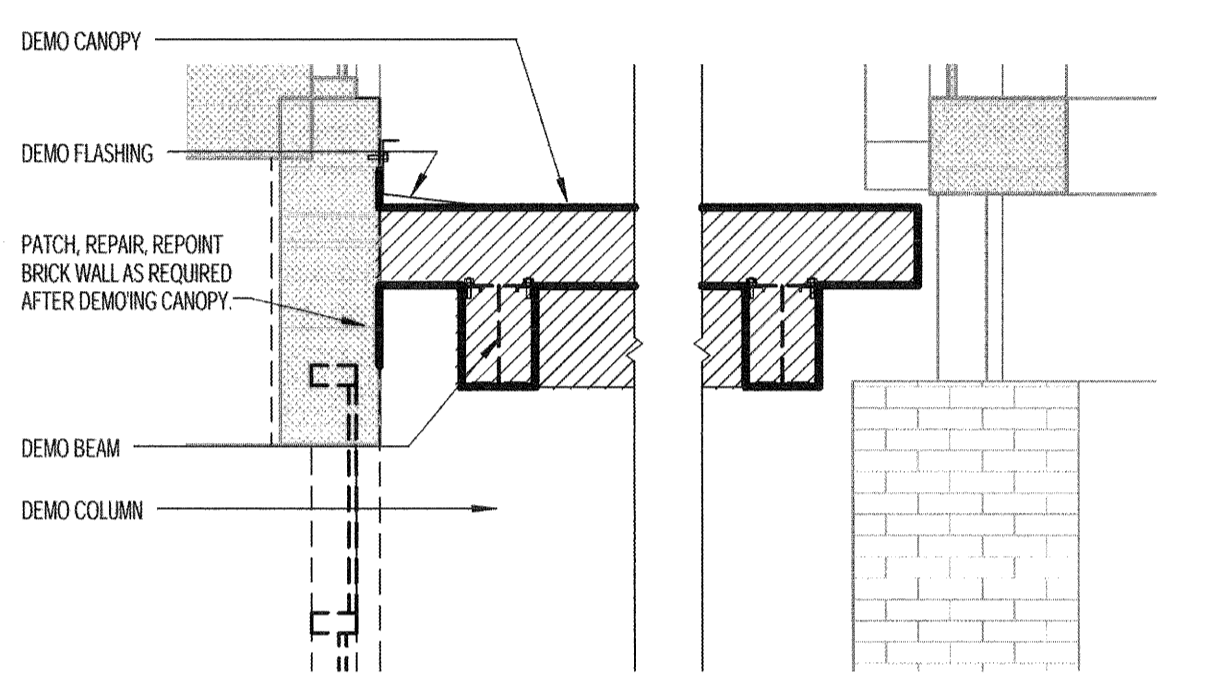
DEMO PLAN SECTION @ EXISTING COLUMN ALONG SOUTH ELEVATION
3/4" = 1'-0"



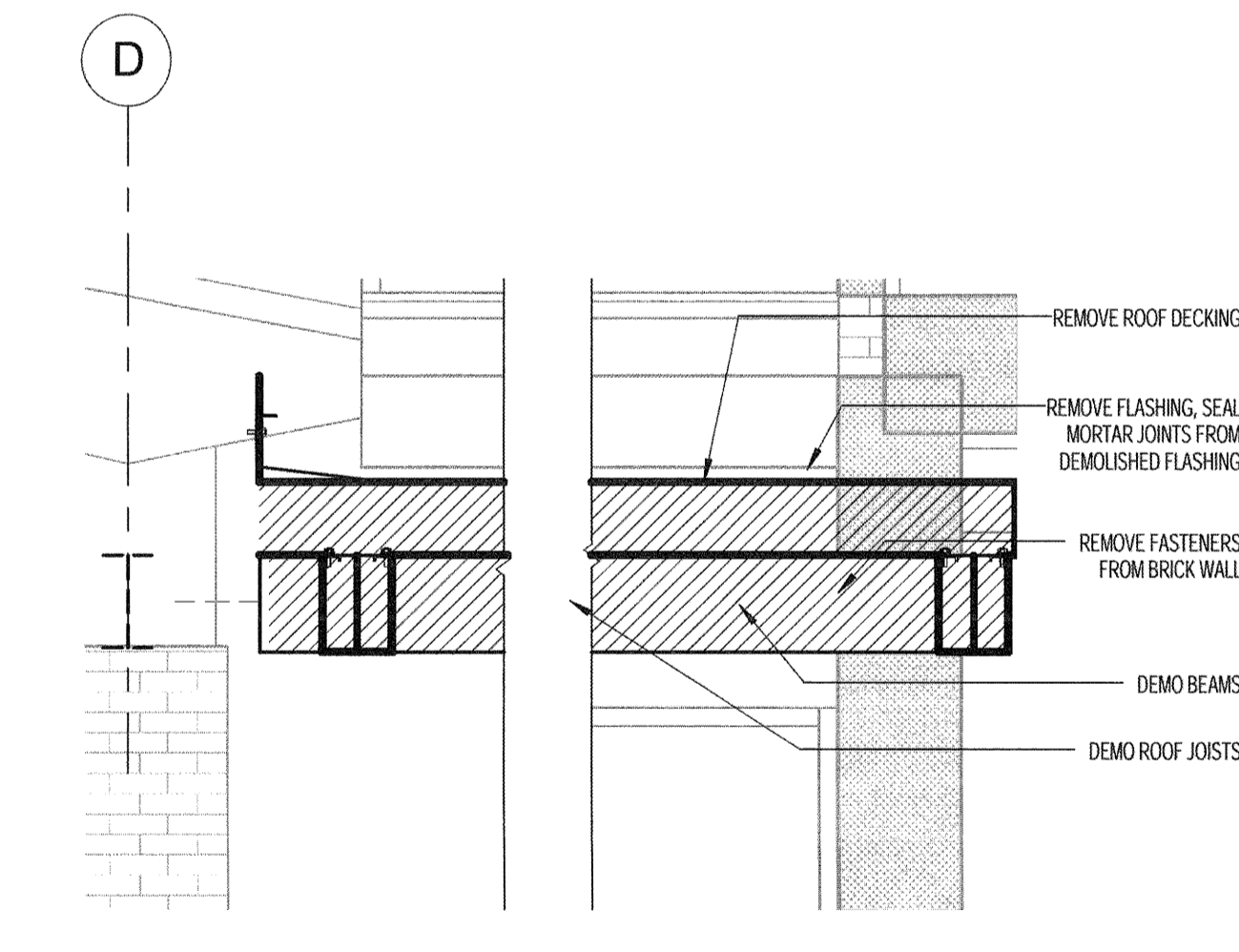
DEMO PLAN SECTION @ EXISTING COLUMN ALONG SOUTH CORNER
3/4" = 1'-0"



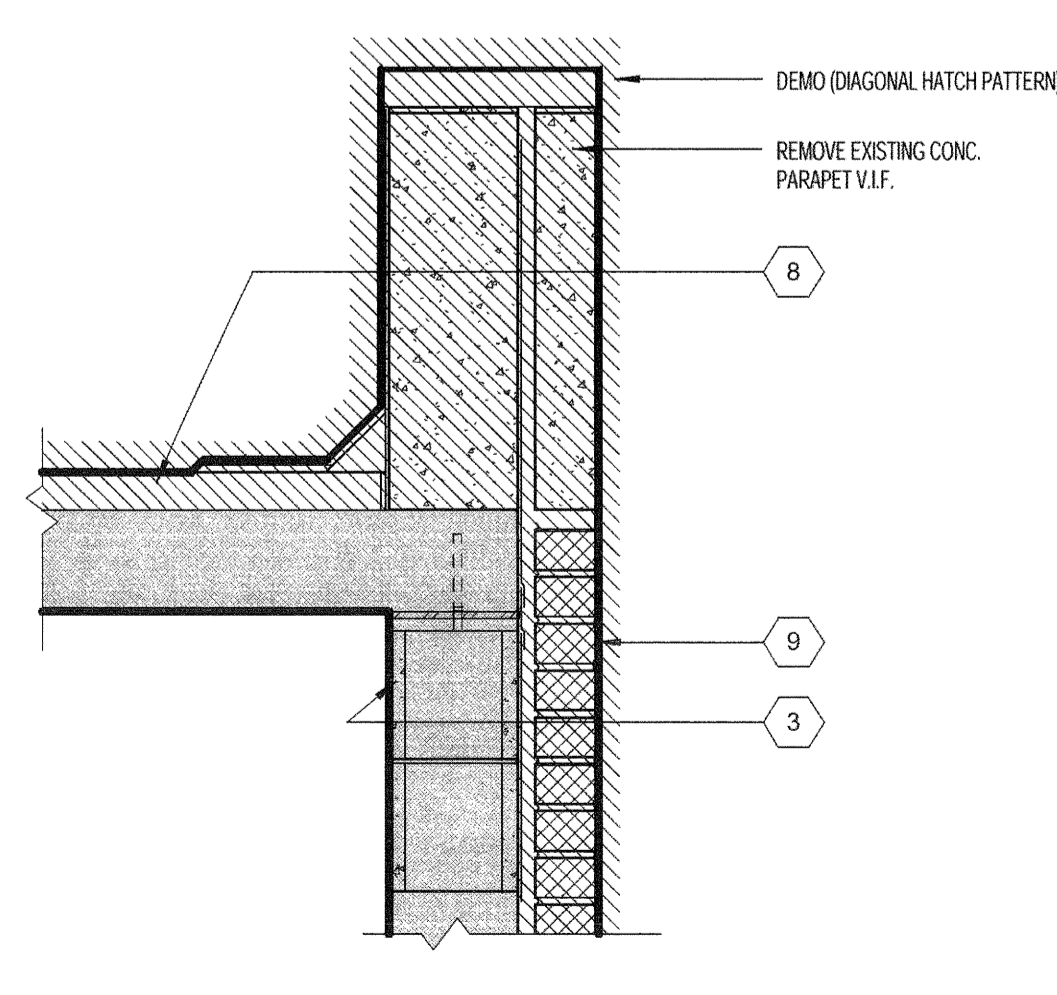
DEMO PLAN DETAIL @ EXISTING COLUMN ALONG EAST ELEVATION
3/4" = 1'-0"



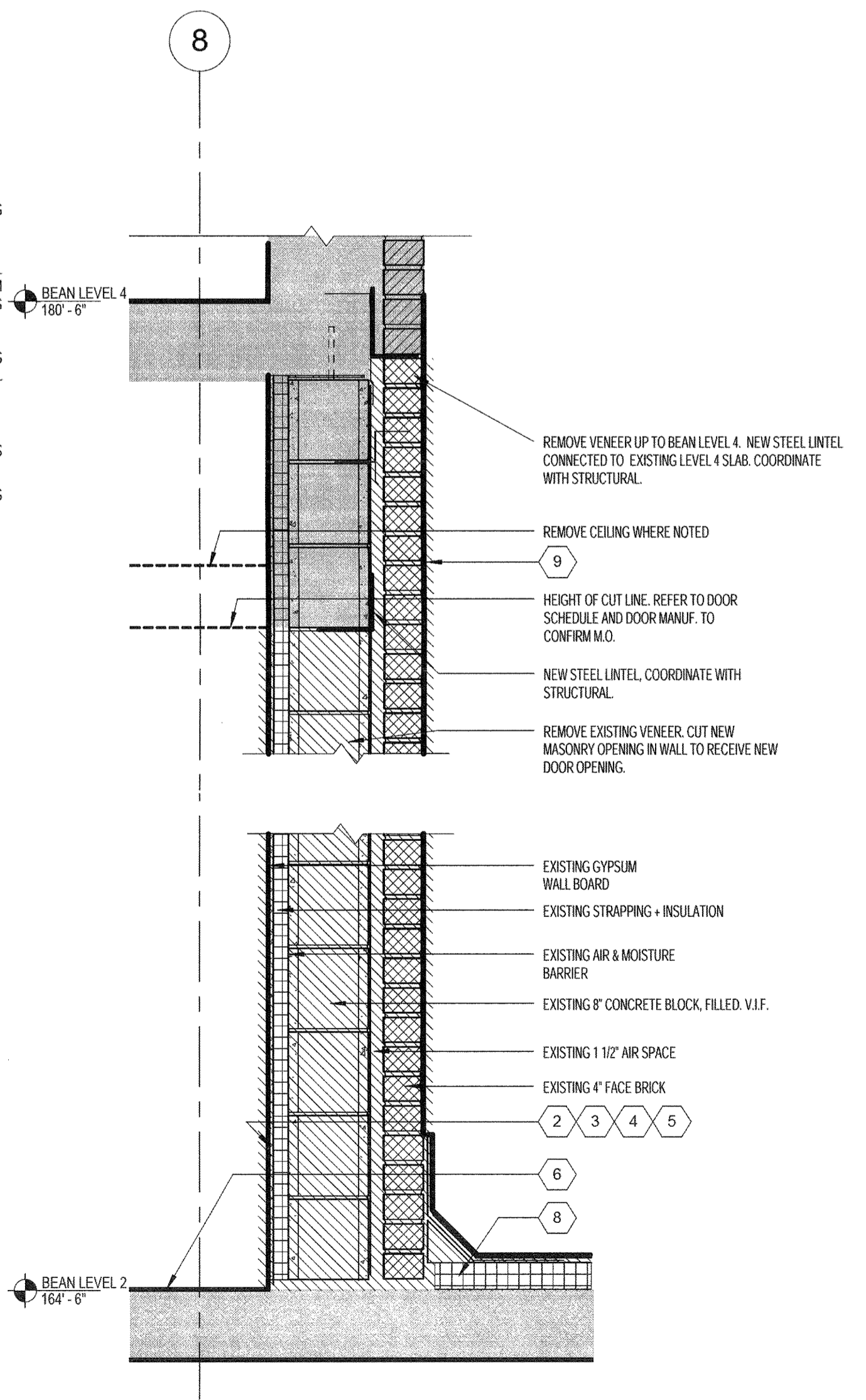
EXISTING CANOPY DEMO SECTION 1
1/2" = 1'-0"



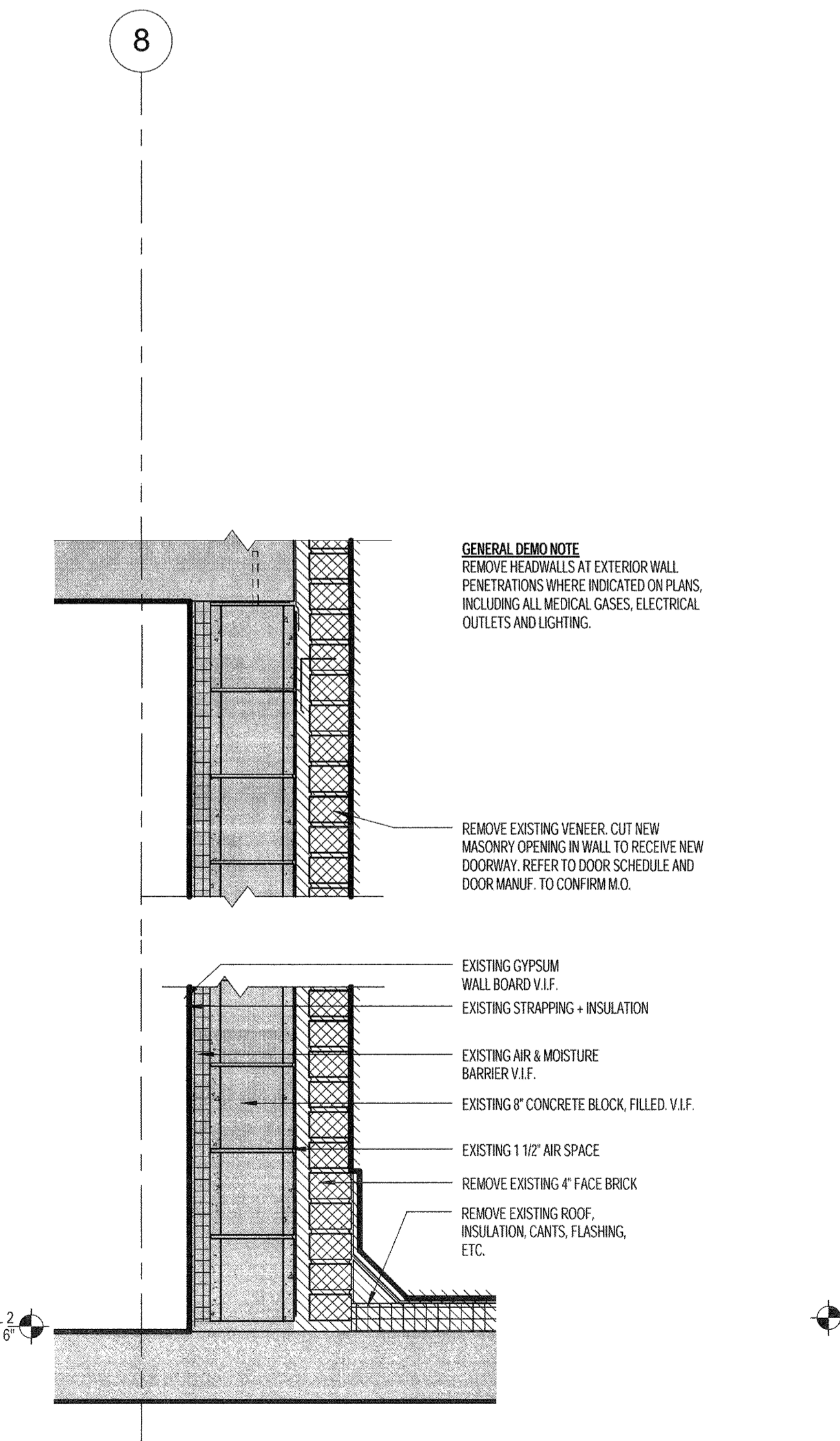
EXISTING CANOPY DEMO SECTION 2
1/2" = 1'-0"



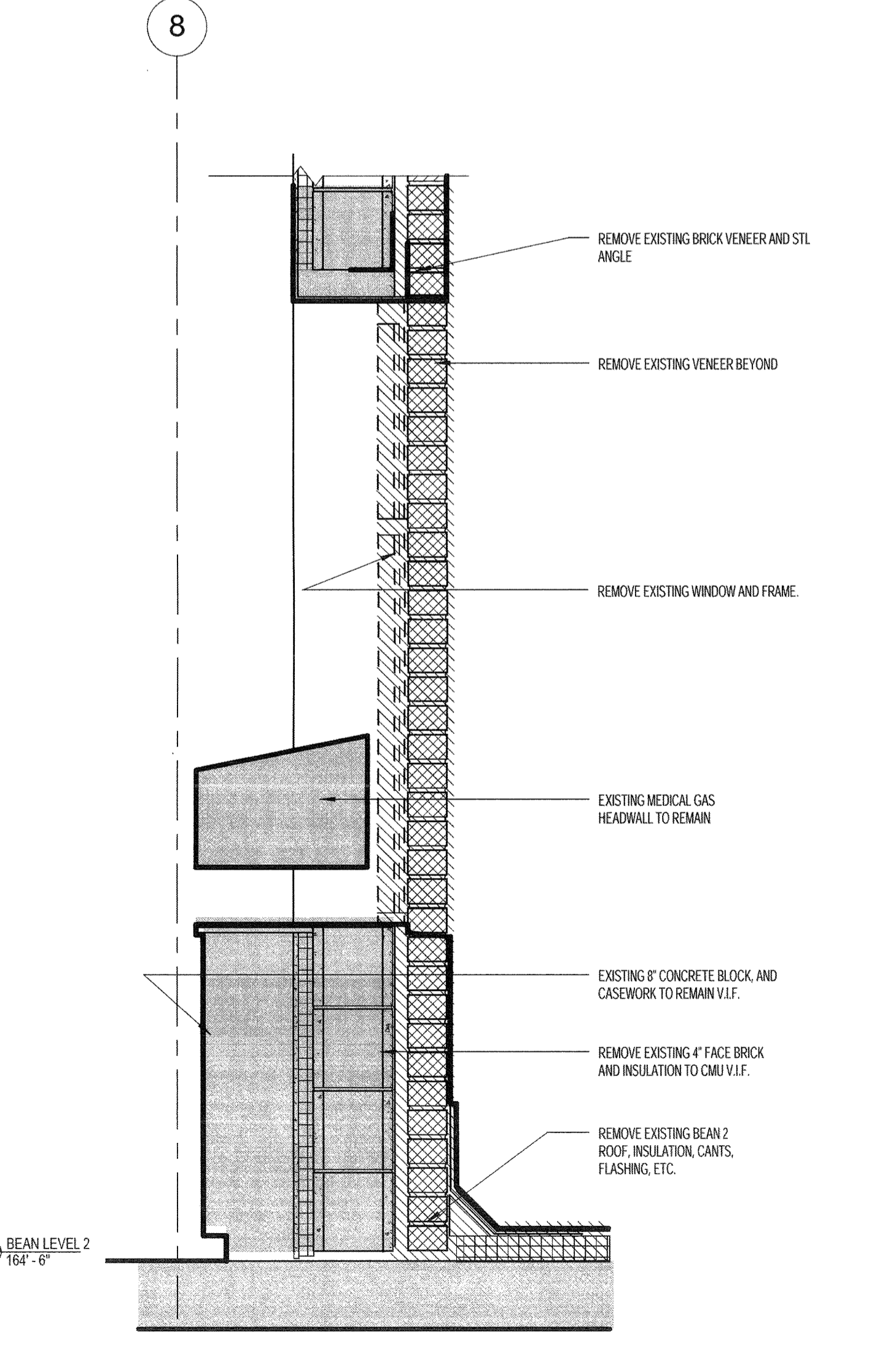
PARAPET DEMO DETAIL
1" = 1'-0"



SECTION @ EXISTING WALL W/ NEW M.O. DETAIL
1" = 1'-0"



SECTION @ EXISTING EXT. WALL
1" = 1'-0"



SECTION AT EXISTING WINDOW DETAIL
1" = 1'-0"