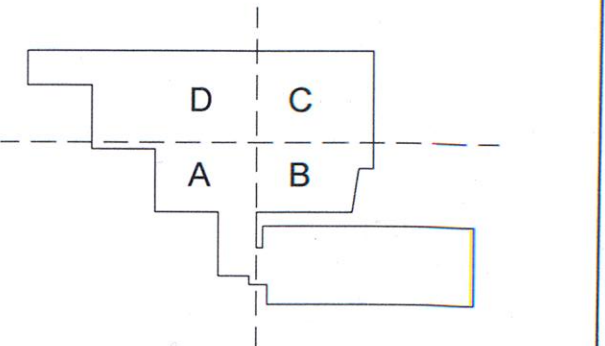


**CONSTRUCTION
DOCUMENTS**



Revisions

Issued for Permit	02/07/2014
NO.	ISSUE
DATE	DATE
Sheet Information	
Date	SEPTEMBER 10, 2013
Job #	C140135481 (MMC) 152168.000
Drawn	Author
Checked	Checker
Approved	Approver
Title	

**LIFE SAFETY
LEVEL 4**

**Sheet
A00-11**

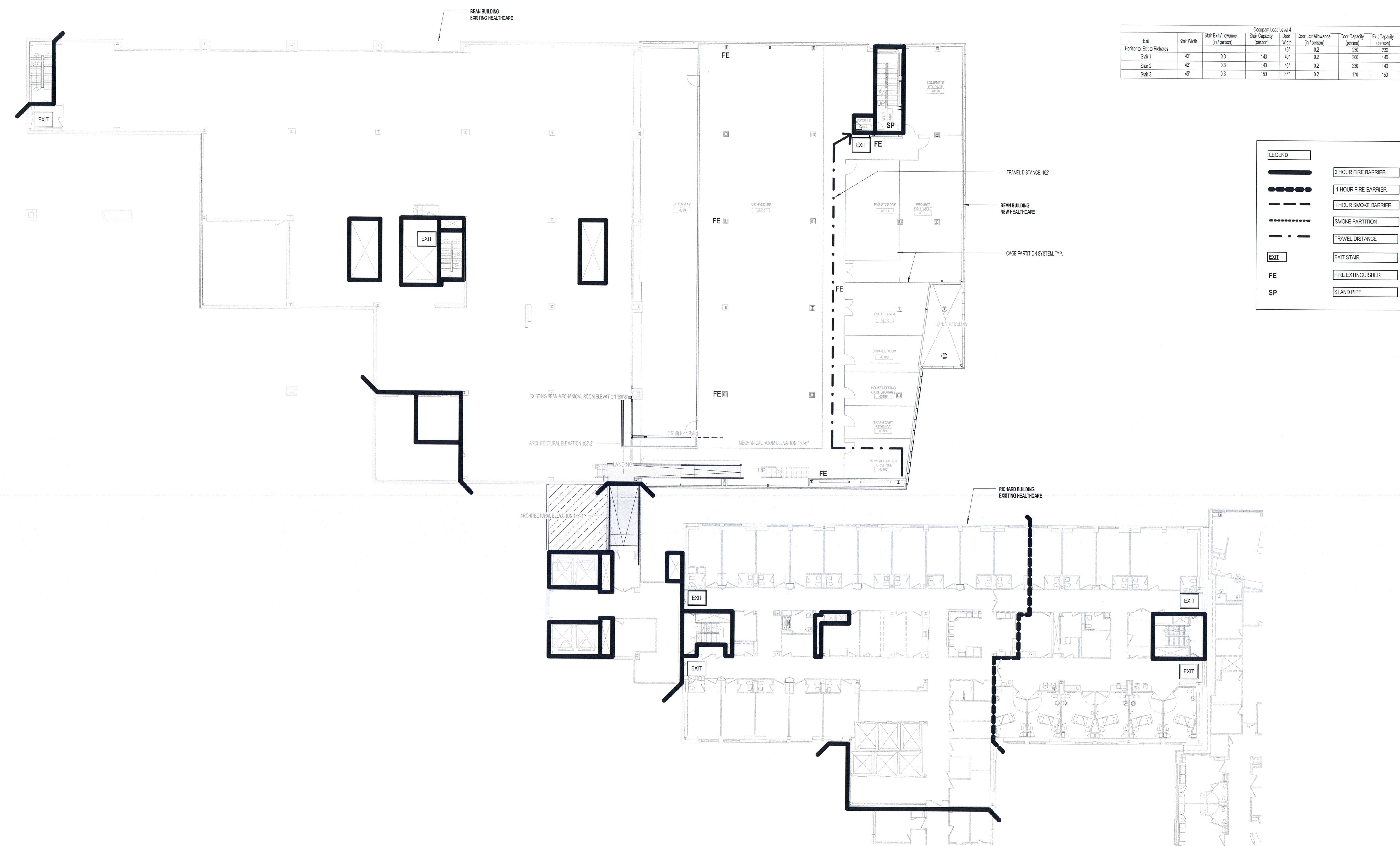
Occupant Load Level 4			
Use	Floor Area	Floor Area Per Occupant (SF / OCC)	Occupant Load
Addition Level 4			
Mechanical Storage	11,866 SF	300	40
Existing			
Mechanical Storage	22,403 SF	300	75
Addition Level 4 Mezzanine			
Mechanical Storage	2,775 SF	300	9

Occupant Load Densities (IBC TABLE 1004.1.1 & NFPA 101 7.3.1.2)			
15 Net S.F. / Occ.	Assembly without Fixed Seats - Unconcentrated (Tables and Chairs)		
50 Net S.F. / Occ.	Locker Rooms / Physical Therapy		
100 Gross S.F. / Occ.	Office Areas		
120 Gross S.F. / Occ.	Sleeping Areas		
240 Gross S.F. / Occ.	Inpatient Treatment Areas		
300 Gross S.F. / Occ.	Storage / Mechanical		

Occupant Load Level 4						
Exit	Stair Width	Stair Exit Allowance (in / person)	Stair Capacity (person)	Door Width	Door Exit Allowance (in / person)	Door Capacity (person)
Horizontal Exit to Richards	42"	0.3	140	42"	0.2	200
Stair 1	42"	0.3	140	42"	0.2	200
Stair 2	42"	0.3	140	42"	0.2	200
Stair 3	45"	0.3	150	34"	0.2	170

LEGEND

- 2 HOUR FIRE BARRIER
- 1 HOUR FIRE BARRIER
- 1 HOUR SMOKE BARRIER
- SMOKE PARTITION
- TRAVEL DISTANCE
- EXIT
- EXIT STAIR
- FIRE EXTINGUISHER
- STAND PIPE



1 LIFE SAFETY PLAN - MECHANICAL LEVEL 4
1/16" = 1'-0"

