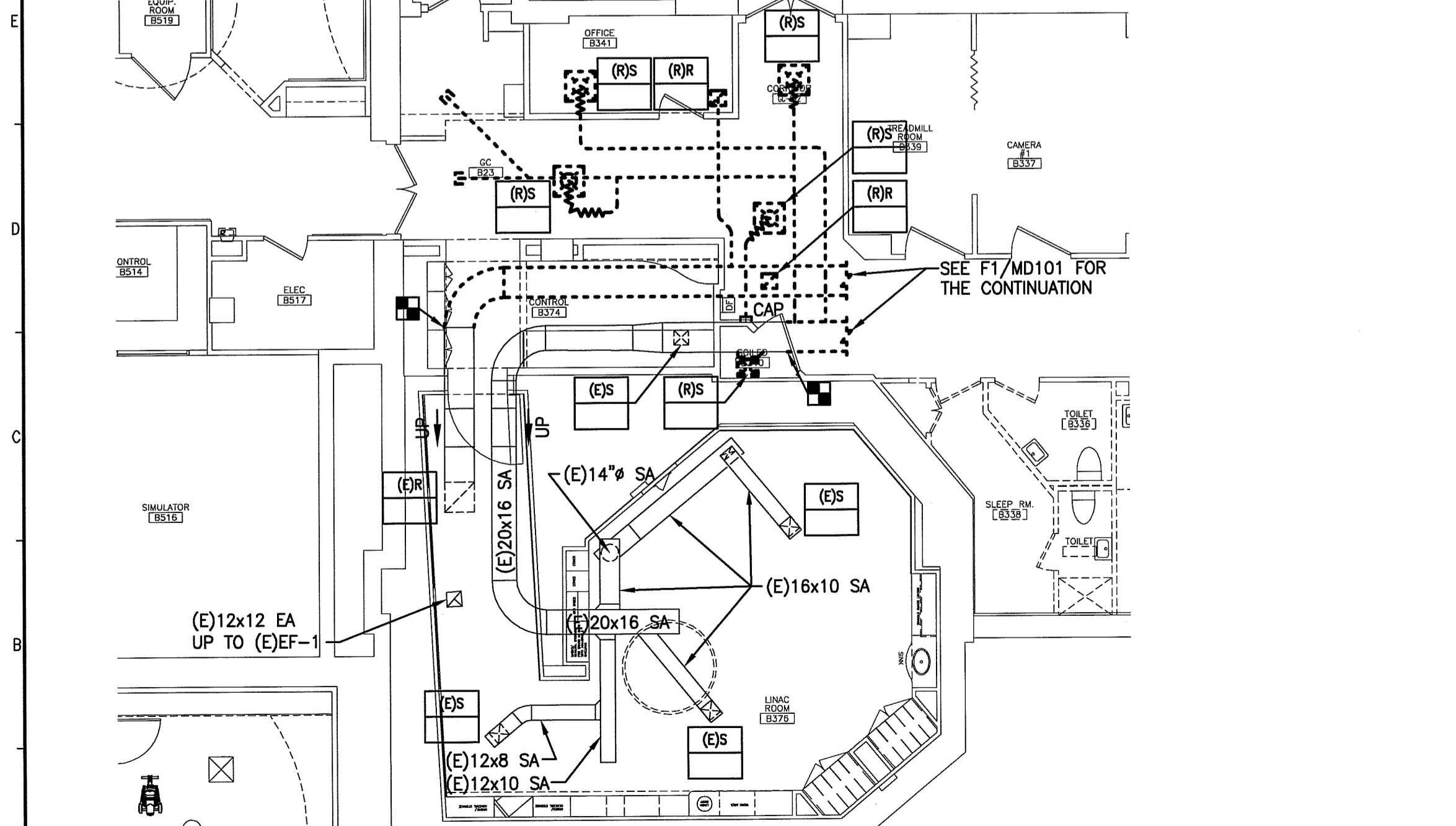


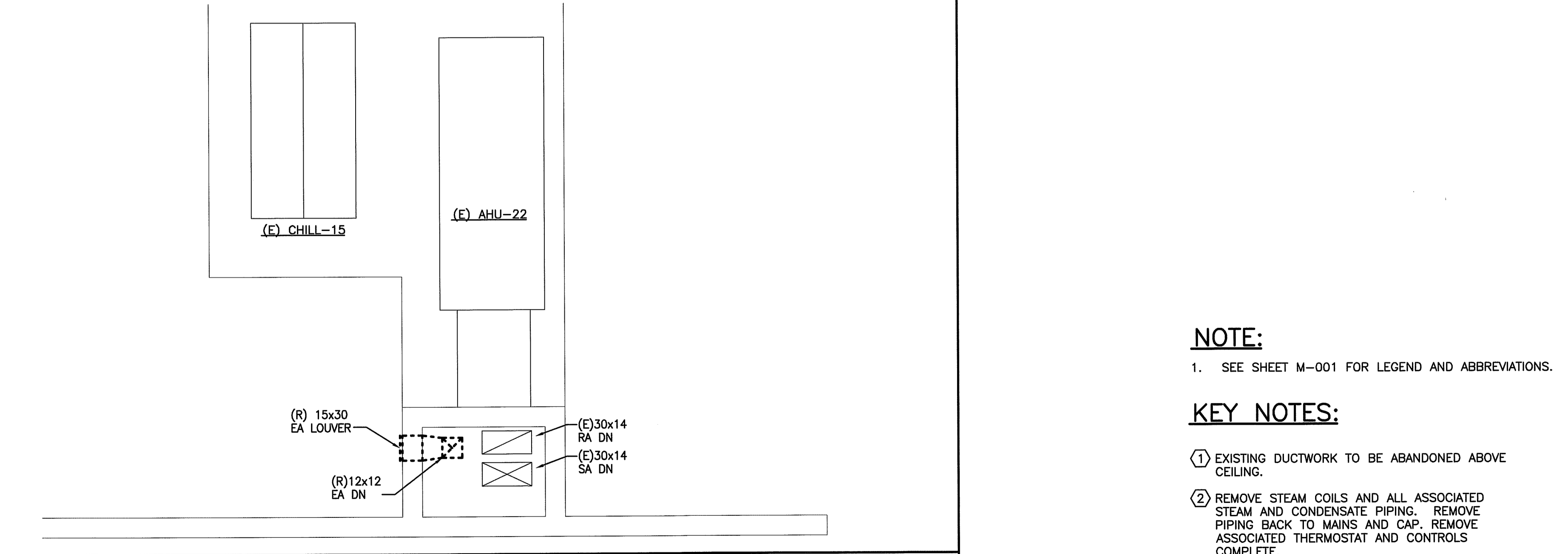
F1 HVAC DEMOLITION PLAN

1/4"=1'-0"



A1 HVAC DEMOLITION PART PLAN

1/8"=1'-0"



A7 HVAC DEMOLITION GROUND FLOOR PART PLAN

1/4"=1'-0"

NOTE:
 1. SEE SHEET M-001 FOR LEGEND AND ABBREVIATIONS.
KEY NOTES:
 ① EXISTING DUCTWORK TO BE ABANDONED ABOVE CEILING.
 ② REMOVE STEAM COILS AND ALL ASSOCIATED STEAM AND CONDENSATE PIPING. REMOVE PIPING BACK TO MAINS AND CAP. REMOVE ASSOCIATED THERMOSTAT AND CONTROLS COMPLETE.
 ③ REMOVE FAN SWITCH ASSOCIATED WIRING AND CONTROLS.

144 Fore Street/P.O. Box 618
 Portland, Maine 04104
 Tel: (207) 772-3846
 Fax: (207) 772-1070
 www.smarthinc.com

ARCHITECTURE
 ENGINEERING
 PLANNING
 INTERIOR DESIGN
 COMMISSIONING

SMART

PROJECT NORTH
 (North Arrow)

STATE OF MAINE
 EXHIBIT
 KATHERINE W. EVERETT
 LICENSED PROFESSIONAL ENGINEER
 3-13-14

MAINE MEDICAL CENTER
 NUCLEAR MEDICINE RENOVATIONS
 PORTLAND, MAINE

ISSUED FOR CONSTRUCTION
 3-13-14

REV	DESCRIPTION	DATE
0	ISSUED FOR CONSTRUCTION	3-13-14

GRAPHIC SCALE:
 0" = 1'

SCALE: 1/4"=1'-0"
 PROJECT MANAGER: DIV
 JC/DRAWN BY: FV
 A/E OF RECORD: KME
 CAD FILE: MD101-1312B
 PROJECT NO: 1312B
 DATE: 3-13-14
 SHEET TITLE:
HVAC DEMOLITION PLAN

SHEET No. **MD101**
 © COPYRIGHT 2013 SMART INC.