

Consultants

SCU Reception

Campus
Bramhall
Building
Bean
Floor
Ground



Revisions

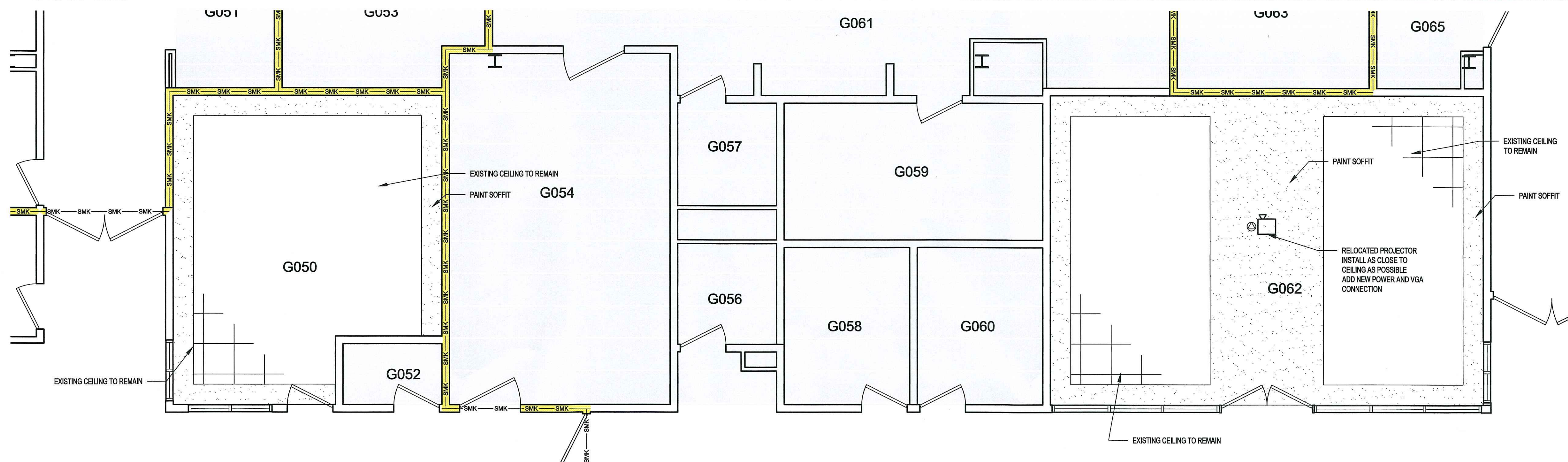
No	Revision	Date

Issue FOR PRICING
Date 4 MARCH 2014
Project # -
Drawn By DM
Checked By DFD

REFLECTED CEILING PLAN

Sheet

A104



1 REFLECTED CEILING PLAN - NEW STAFF ROOM AND TRAINING ROOM
1/4"=1'-0"



2 REFLECTED CEILING PLAN - NEW WAITING ROOMS
1/4"=1'-0"