

# LIGHTING

- 2x2 FLUORESCENT FIXTURE ASSOCIATED CONTROL DEVICE  
FIXTURE TYPE (SEE LIGHT FIXTURE SCHEDULE)
- FIXTURE WIRED TO UNSWITCHED EMERGENCY CIRCUIT
- FLUORESCENT STRIP
- DOWN LIGHT
- EXIT SIGN, CEILING MOUNTED  
ARROW INDICATES EGRESS DIRECTION  
SHADING INDICATES SIGN FACE
- EXIT SIGN, WALL MOUNTED  
SHADING INDICATES SIGN FACE
- DIMMER SWITCH
- 3-WAY TOGGLE SWITCH
- SINGLE POLE TOGGLE SWITCH  
INDICATES CONTROLLED FIXTURE
- WALL MOUNTED FIXTURE

# COMMUNICATION & DATA SYSTEMS

- TELEPHONE SYSTEM WALL JACK  
W-INDICATES WALL MOUNTED AT 60" AFF  
P-INDICATES PAYPHONE  
(2)-INDICATES 2 OUTLETS, SINGLE BOX
- COMBINATION VOICE/DATA SYSTEM OUTLET
- CABLE TELEVISION SYSTEM OUTLET. MOUNT 18" AFF UNLESS OTHERWISE NOTED
- PAGING SYSTEM SPEAKER. CEILING MOUNTED

# FIRE ALARM

- FIRE ALARM AUDIBLE/VISIBLE NOTIFICATION APPLIANCE (GENERAL EVACUATION)
- PHOTOELECTRIC SMOKE DETECTOR. CEILING MOUNTED
- DOOR HOLD OPEN
- FIRE ALARM VISIBLE ONLY NOTIFICATION APPLIANCE  
CANDELA INTENSITY-15/75 UNLESS OTHERWISE NOTED  
CEILING MOUNTED

# POWER

- DUPLEX RECEPTACLE, NEMA 5-20R.  
ISOLATED GROUND RECEPTACLE
- GFI DUPLEX RECEPTACLE, NEMA 5-20R
- DOUBLE DUPLEX (QUADRUPLEX) RECEPTACLE, NEMA 5-20R
- PANELBOARD, NORMAL POWER
- HOSPITAL GRADE GFCI DUPLEX RECEPTACLE, NEMA 5-20R
- HOSPITAL GRADE GFCI DUPLEX RECEPTACLE, NEMA 5-20R
- JUNCTION BOX

# NURSE CALL SYSTEM

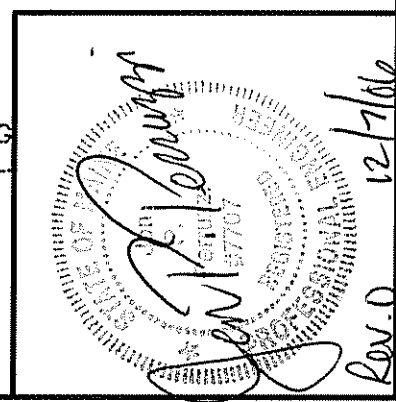
- NURSE CALL CALL LIGHT
- PATIENT CALL BUTTON
- NURSE CALL PULL CORD

# GENERAL NOTES:

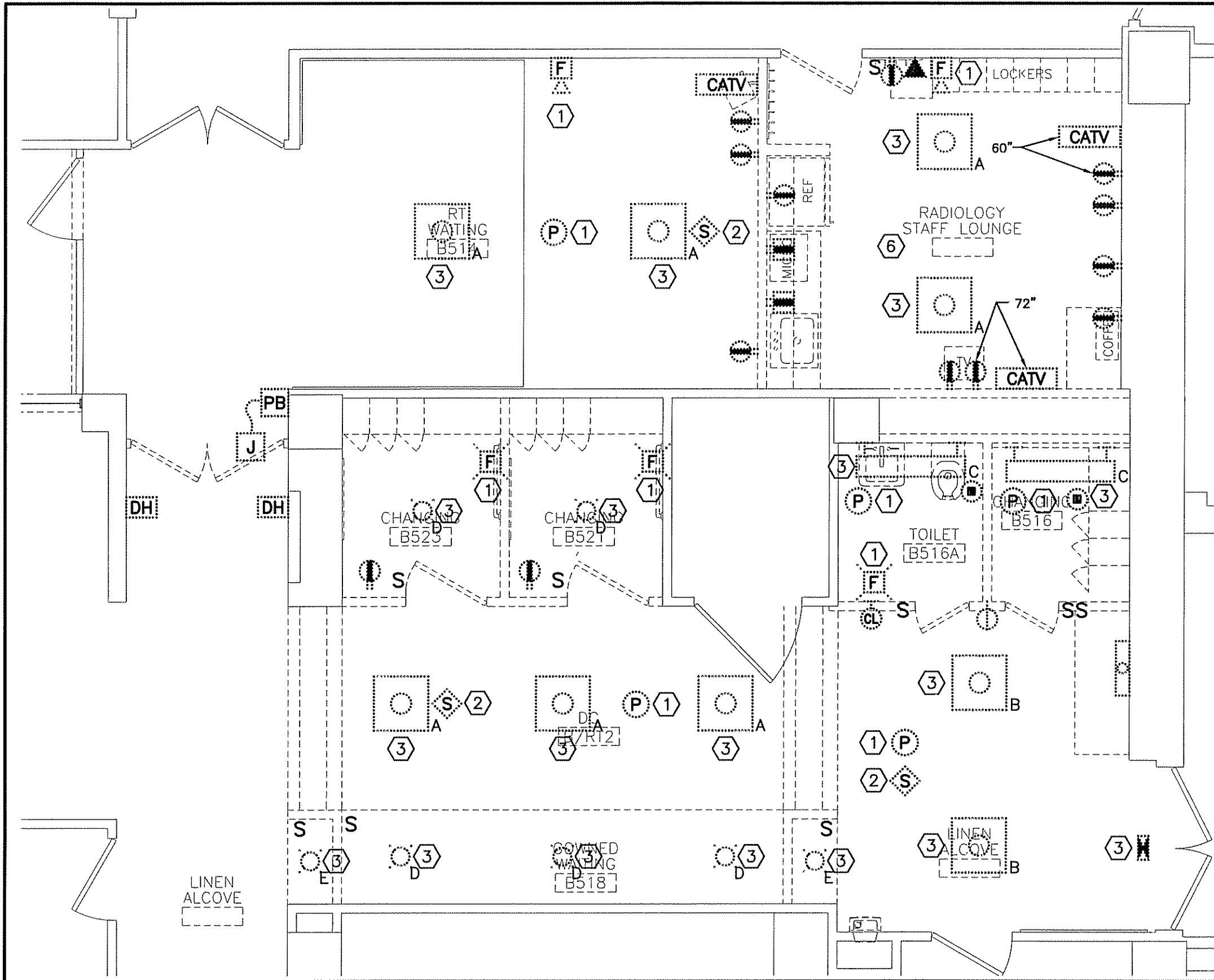
1. ALL WORK SHALL BE PERFORMED IN ACCORDANCE WITH NFPA-70, NATIONAL ELECTRICAL CODE (NEC).
2. UNLESS OTHERWISE NOTED CONVENIENCE RECEPTACLES SHALL BE MOUNTED 18-INCHES AFF, LIGHTING TOGGLE SWITCHES 48-INCHES AFF, DATA SYSTEM OUTLETS 18-INCHES AFF, AND FIRE ALARM NOTIFICATION DEVICES 80-INCHES AFF OR 6-INCHES BELOW CEILING, WHICHEVER IS LOWER.
3. ALL PENETRATIONS THROUGH FLOORS, RATED WALLS AND PARTITIONS SHALL BE SEALED WITH UL APPROVED FIRE SEALANT MATERIAL TO MAINTAIN THE RATING OF SEPARATION.
4. ALL ENCLOSURES, CONDUIT BODIES AND THEIR COVERS CONTAINING FIRE ALARM SYSTEM CONDUCTORS SHALL BE PAINTED RED.
5. AN EQUIPMENT GROUNDING CONDUCTOR SHALL BE INSTALLED WITH EVERY FEEDER AND BRANCH CIRCUIT.
6. UNLESS OTHERWISE NOTED WIRING SHALL BE 2#12 AWG CONDUCTORS AND #12 GND.
7. LIGHTING TOGGLE SWITCHES SHALL BE COMMERCIAL SPECIFICATION GRADE 120 VOLT, SIDE WIRED AND PROVIDED WITH GROUNDING SCREW. LEVITON, PASS AND SEYMOUR OR APPROVED EQUAL. COORDINATE COLOR WITH ARCHITECT.
8. CONVENIENCE RECEPTACLES SHALL BE COMMERCIAL SPECIFICATION GRADE GROUNDING TYPE NEMA 5-20R, SIDE WIRED. LEVITON, PASS AND SEYMOUR OR APPROVED EQUAL. COORDINATE COLOR WITH ARCHITECT.
9. PROVIDE WALL PLATES FOR ALL WIRING DEVICES, NYLON SMOOTH TYPE IN FINISHED AREAS AND GALVANIZED IN UNFINISHED AREAS.
10. ALL WIRING SHALL BE 600V, COPPER WITH THHN/THWN INSULATION INSTALLED IN EMT.

# LINE TYPES

- EXISTING
- NEW
- DEMOLITION



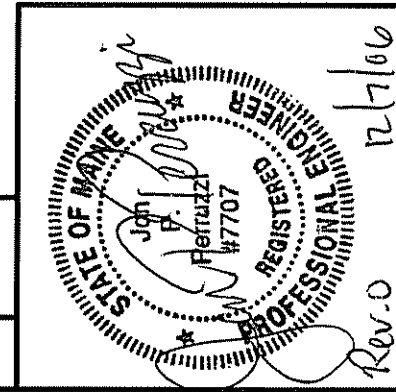
PROJECT:	MAINE MEDICAL CENTER RADIATION THERAPY RENOVATIONS PORTLAND, MAINE			SHEET TITLE:	LEGEND AMD GENERAL NOTES		
SCALE:	NONE	JC/DRAWN BY:	CDS	A/E OF RECORD:	JPP	PROJECT No.:	06043
PROJECT MANAGER:	CDP	SMRT CAD FILE:	E-001-06043	DATE:	12-8-06		
SHEET No.:	E-001			DATE:	12-8-06		
CURRENT ISSUED STATUS:				ISSUED FOR CONSTRUCTION 12-8-06			



**NOTES:**

1. SEE SHEET E-001 FOR LEGEND AND GENERAL NOTES.
2. SEE ED102 FOR DEMO NOTES AND KEYED NOTES.

<p>PROJECT: MAINE MEDICAL CENTER RADIATION THERAPY RENOVATIONS PORTLAND, MAINE</p>		<p>SHEET TITLE: PARTIAL DEMOLITION PLAN</p>	
<p>SCALE: 1/4" = 1'-0"</p>	<p>JC/DRAWN BY: CDS</p>	<p>PROJECT MANAGER: CDP</p>	<p>DATE: 12-8-06</p>
<p>PROJECT No. ED101</p>	<p>SMRT CAD FILE: ED101-06043</p>	<p>A/E OF RECORD: JPP</p>	<p>PROJECT No. 06043</p>
<p>ISSUED FOR CONSTRUCTION 12-8-06</p>	<p>DATE: 12-8-06</p>	<p>SMRT</p>	<p>ARCHITECTURE ENGINEERING PLANNING SMRT 144 Fore Street/P.O. Box 618 PORTLAND, MAINE 04104 tel. (207) 772-3846 / fax. (207) 772-1070</p>



A1  
1/4" = 1'-0"

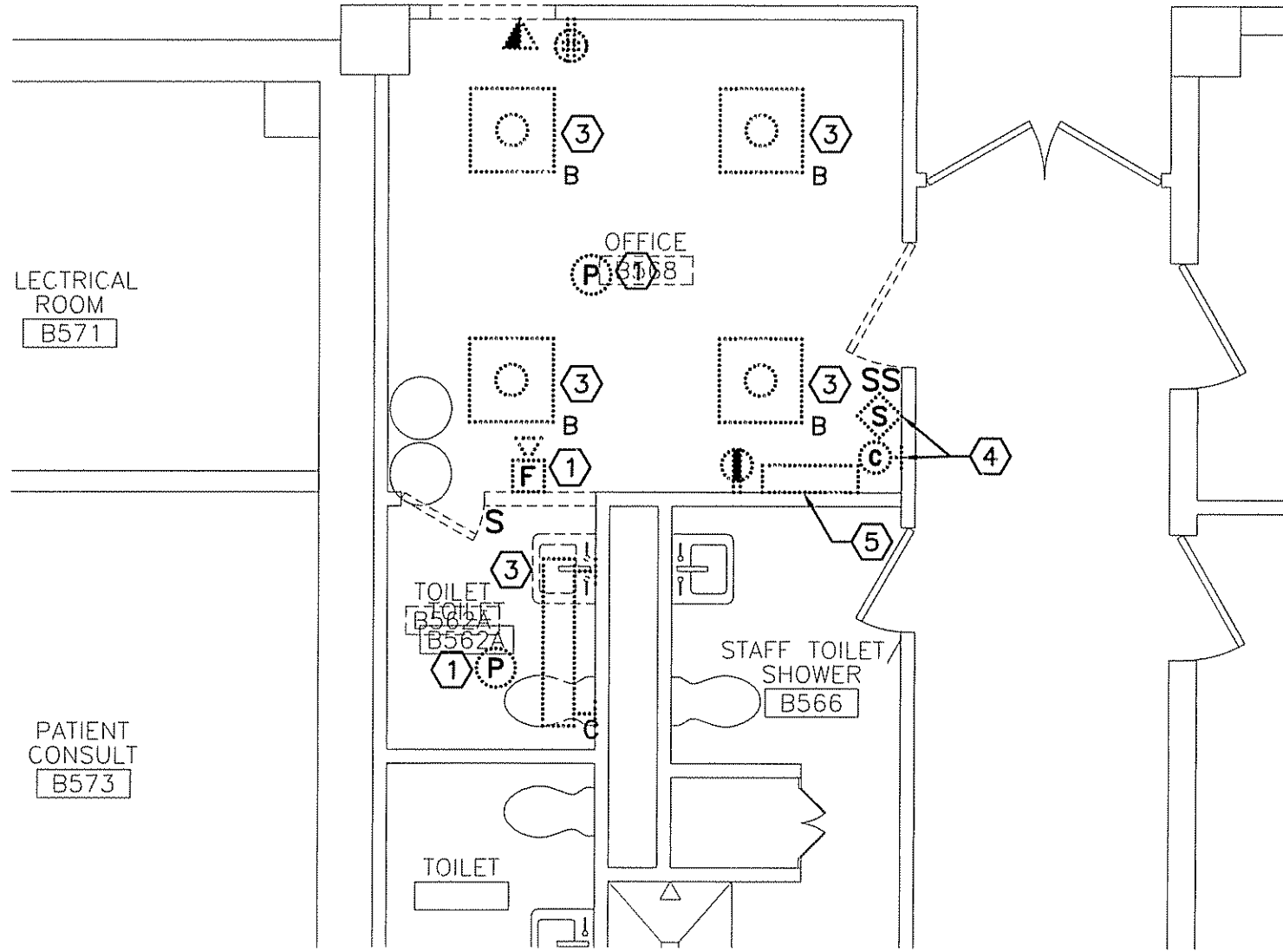
PARTIAL DEMOLITION PLAN  
\*

**NOTE:**

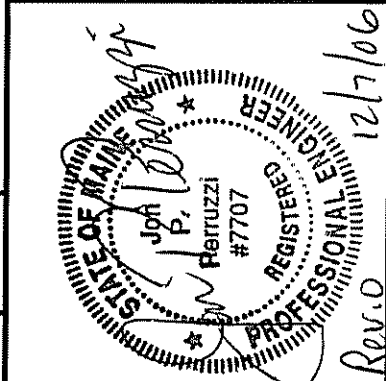
1. SEE SHEET E-001 FOR LEGEND AND GENERAL NOTES.

**KEYED NOTES:**

- ① EXISTING FIRE ALARM DEVICE TO BE REMOVED AND REINSTALLED AS INDICATED ON SYSTEMS PLANS.
- ② EXISTING PUBLIC ADDRESS SPEAKER TO BE REMOVED AND REINSTALLED BY OWNER AS INDICATED ON SYSTEMS PLANS.
- ③ EXISTING LIGHT FIXTURE TO BE REMOVED, SAFELY STORED, AND REINSTALLED AS INDICATED ON LIGHTING PLANS.
- ④ EXISTING CLOCK, PUBLIC ADDRESS VOLUME CONTROL AND SPEAKER UNIT TO BE REMOVED.
- ⑤ EXISTING VIEW BOX TO BE REMOVED AND RETURNED TO OWNER.
- ⑥ EXISTING STAFF LOUNGE BRANCH CIRCUITS 4,6,8,10,12,14 FROM PANELBOARD PC1 TO BE REMOVED AND EXTENDED TO NEW STAFF LOUNGE B568 AS INDICATED ON EP102.



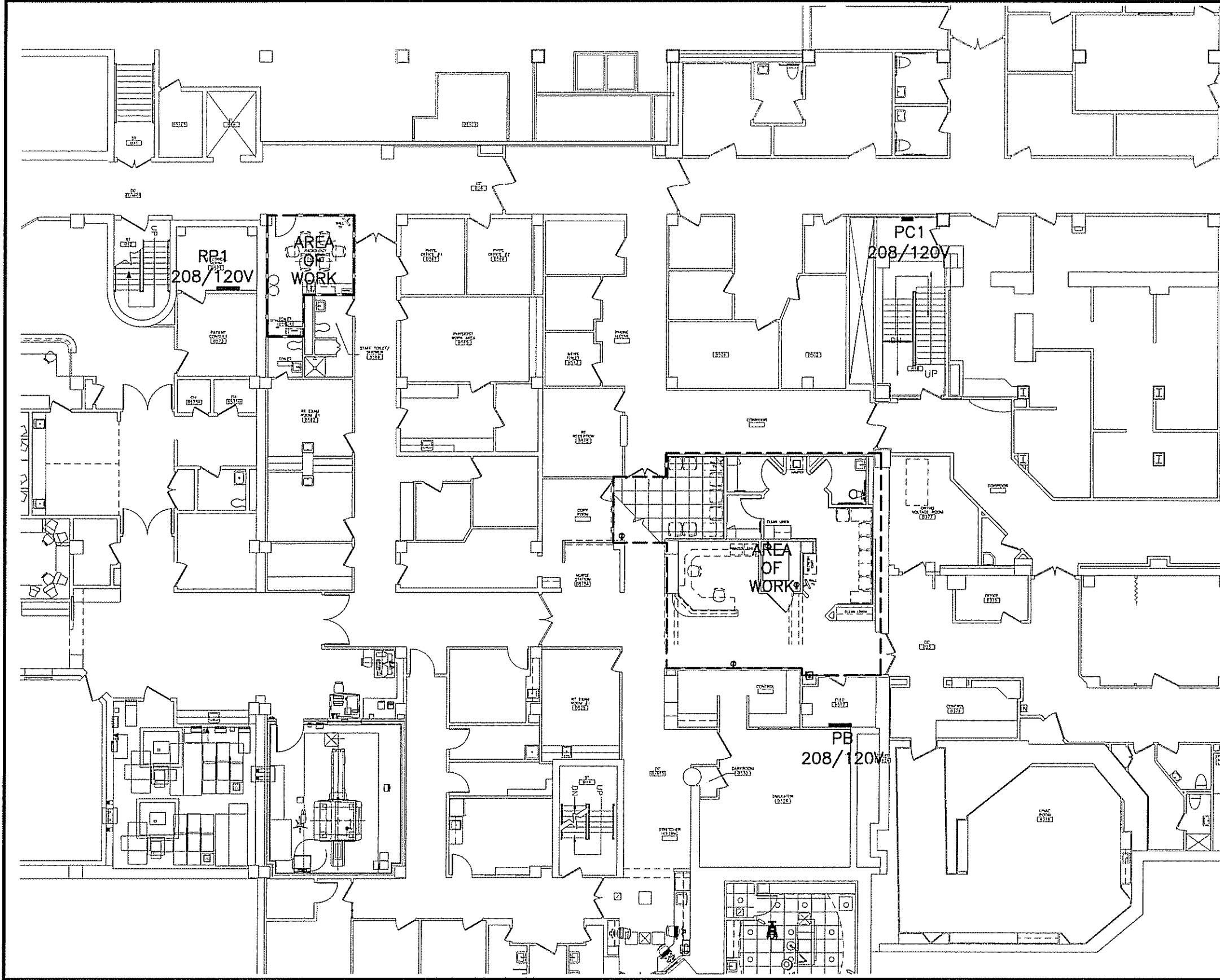
A5	PARTIAL DEMOLITION PLAN
1/4"=1'-0"	*



<b>PROJECT:</b>	<b>MAINE MEDICAL CENTER RADIATION THERAPY RENOVATIONS PORTLAND, MAINE</b>			
<b>PROJECT NORTH</b>	<b>PROJECT No:</b>	<b>DATE:</b>	<b>SHEET TITLE:</b>	
CDS	06043	12-8-06	<b>PARTIAL DEMOLITION PLAN</b>	
<b>ISSUED FOR CONSTRUCTION</b>	<b>12-8-06</b>			
<b>SCALE:</b>	<b>PROJECT MANAGER:</b>	<b>JC/DRAWN BY:</b>	<b>A/E OF RECORD:</b>	<b>SMRT CAD FILE:</b>
1/4"=1'-0"	CDP	CDS	JPP	ED102-06043
<b>SHEET No.</b>	<b>ED102</b>			
© COPYRIGHT 2008 SMRT INC.				



ARCHITECTURE ENGINEERING PLANNING  
SMRT  
144 Fore Street/P.O. Box 618 PORTLAND, MAINE 04104  
tel. (207) 772-3846 / fax. (207) 772-1070



**NOTES:**

- SEE SHEET E-001 FOR LEGEND AND GENERAL NOTES.



ARCHITECTURE ENGINEERING PLANNING  
SMRT  
144 Fore Street/P.O. Box 618 PORTLAND, MAINE 04104  
tel. (207) 772-3846 / fax. (207) 772-1070

REV	DESCRIPTION	DATE

PROJECT: MAINE MEDICAL CENTER  
RADIATION THERAPY RENOVATIONS  
PORTLAND, MAINE

SHEET TITLE:  
OVERALL FLOOR PLAN  
POWER

PROJECT NORTH

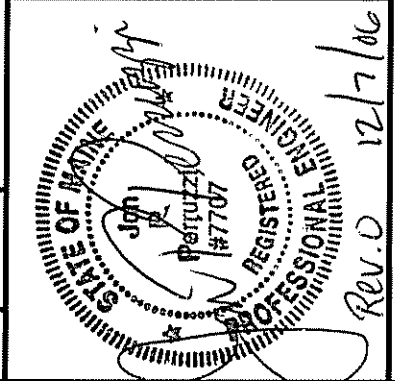
CDS  
JPP  
EP100-06043  
06043  
12-8-06

**ISSUED FOR CONSTRUCTION**  
**12-8-06**

CURRENT ISSUED STATUS:

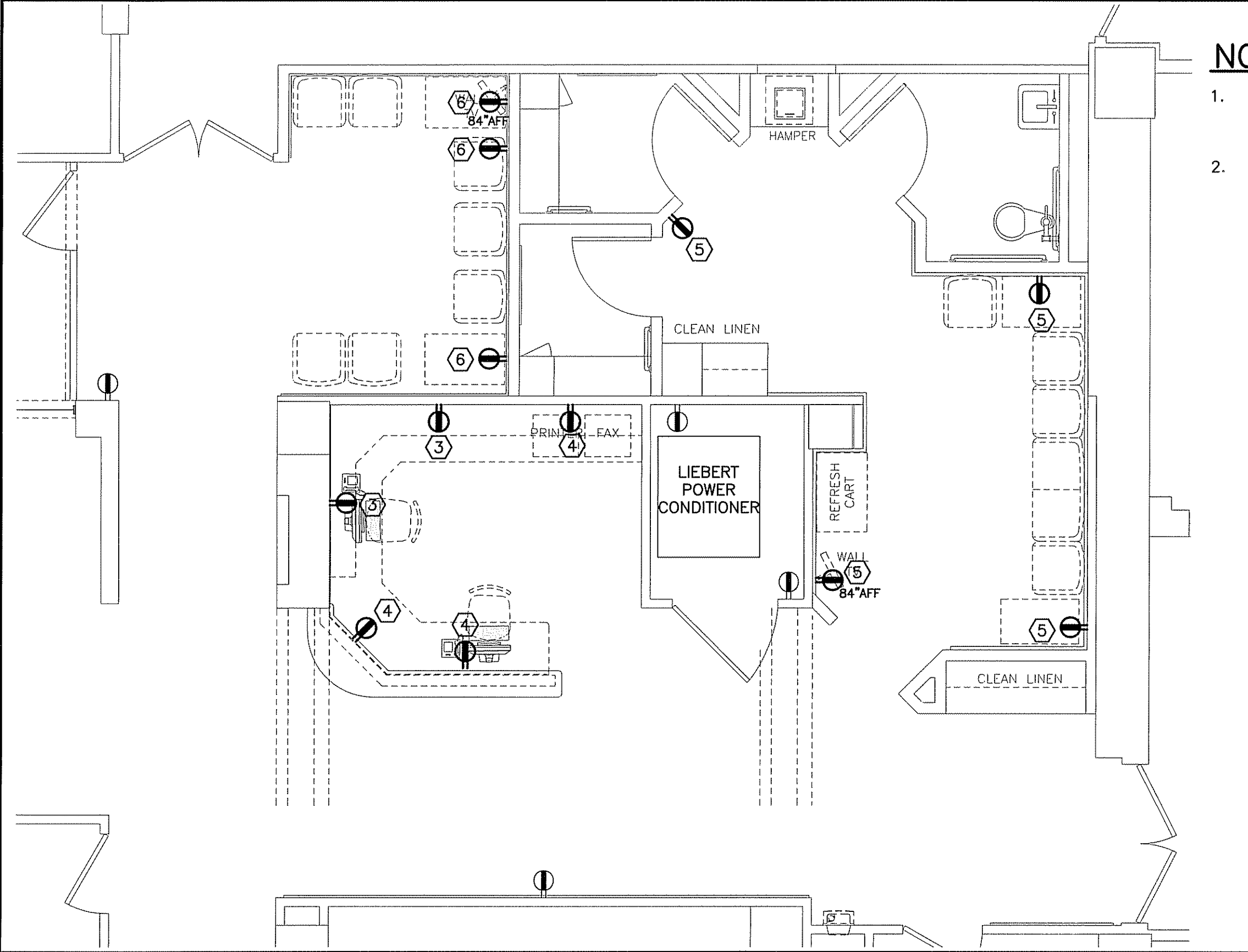
SCALE: 1/16"=1'-0"  
PROJECT MANAGER: CDP  
SHEET No. EP100

JC/DRAWN BY: CDS  
A/E OF RECORD: JPP  
SMRT CAD FILE: EP100-06043  
PROJECT No.: 06043  
DATE: 12-8-06



A1  
1/16"=1'-0"

FLOOR PLAN  
\*



**NOTES:**

1. SEE SHEET E-001 FOR LEGEND AND GENERAL NOTES.
2. SEE EP102 FOR NOTES AND KEYED NOTES.



ARCHITECTURE ENGINEERING PLANNING  
 SMRT  
 144 Fore Street/P.O. Box 618 PORTLAND, MAINE 04104  
 tel. (207) 772-3646 / fax. (207) 772-1070

REV	DESCRIPTION	DATE

PROJECT: MAINE MEDICAL CENTER  
 RADIATION THERAPY RENOVATIONS  
 PORTLAND, MAINE

SHEET TITLE:  
**PARTIAL FLOOR PLAN  
 POWER**



PROJECT: MAINE MEDICAL CENTER  
 RADIATION THERAPY RENOVATIONS  
 PORTLAND, MAINE

SCALE: 1/4" = 1'-0"  
 PROJECT MANAGER: CDP  
 SHEET No. EP101  
 JC/DRAWN BY: CDS  
 A/E OF RECORD: JPP  
 SMRT CAD FILE: EP101-06043  
 PROJECT No: 06043  
 DATE: 12-8-06



A1  
 1/4" = 1'-0"

PARTIAL FLOOR PLAN  
 \*

CURRENT ISSUED STATUS:

**ISSUED FOR CONSTRUCTION  
 12-8-06**

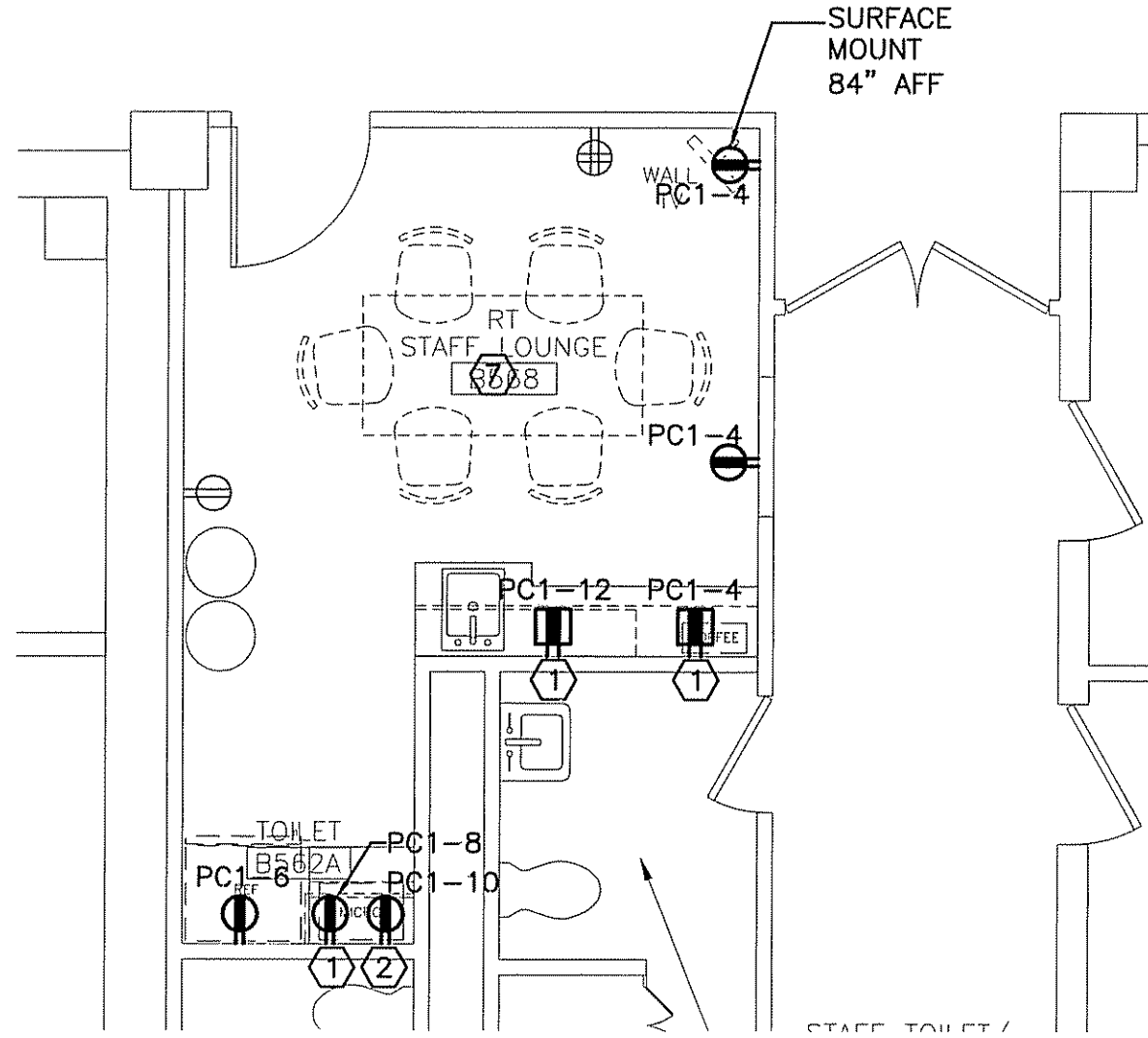
© COPYRIGHT 2006 SMRT, INC.

**NOTE:**

1. SEE SHEET E-001 FOR LEGEND AND GENERAL NOTES.

**KEYED NOTES:**

- ① MOUNT 6" ABOVE COUNTER TO CENTERLINE OF DEVICE
- ② INSTALL IN BACK OF UPPER CABINET FOR MICROWAVE OVEN. COORDINATE WITH ARCH.
- ③ CONNECT TO PANELBOARD PB SPARE CIRCUIT BREAKER #44 OR FIRST EXISTING BRANCH CIRCUIT LEFT SPARE AFTER DEMOLITION.
- ④ CONNECT TO PANELBOARD PB SPARE CIRCUIT BREAKER #48 OR SECOND EXISTING BRANCH CIRCUIT LEFT SPARE AFTER DEMOLITION.
- ⑤ CONNECT TO PANELBOARD PB SPARE CIRCUIT BREAKER #57 OR THIRD EXISTING BRANCH CIRCUIT LEFT SPARE AFTER DEMOLITION.
- ⑥ CONNECT TO PANELBOARD PB SPARE CIRCUIT BREAKER #58 OR FOURTH EXISTING BRANCH CIRCUIT LEFT SPARE AFTER DEMOLITION.
- ⑦ PANELBOARD PC1 BRANCH CIRCUITS SERVING FORMER STAFF LOUNGE SHALL BE EXTENDED FOR USE AS INDICATED.

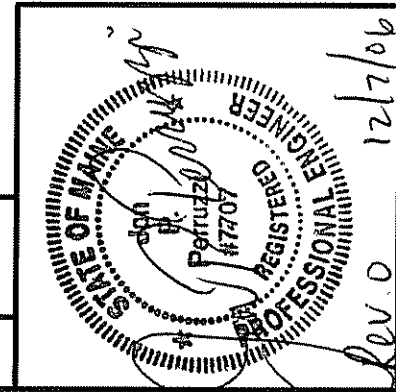


A5

PARTIAL FLOOR PLAN

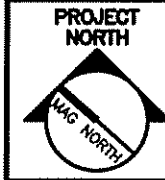
1/4"=1'-0"

\*



CURRENT ISSUED STATUS:

**ISSUED FOR CONSTRUCTION**  
12-8-06



PROJECT:

MAINE MEDICAL CENTER  
RADIATION THERAPY RENOVATIONS  
PORTLAND, MAINE

SHEET TITLE:

PARTIAL FLOOR PLAN  
POWER

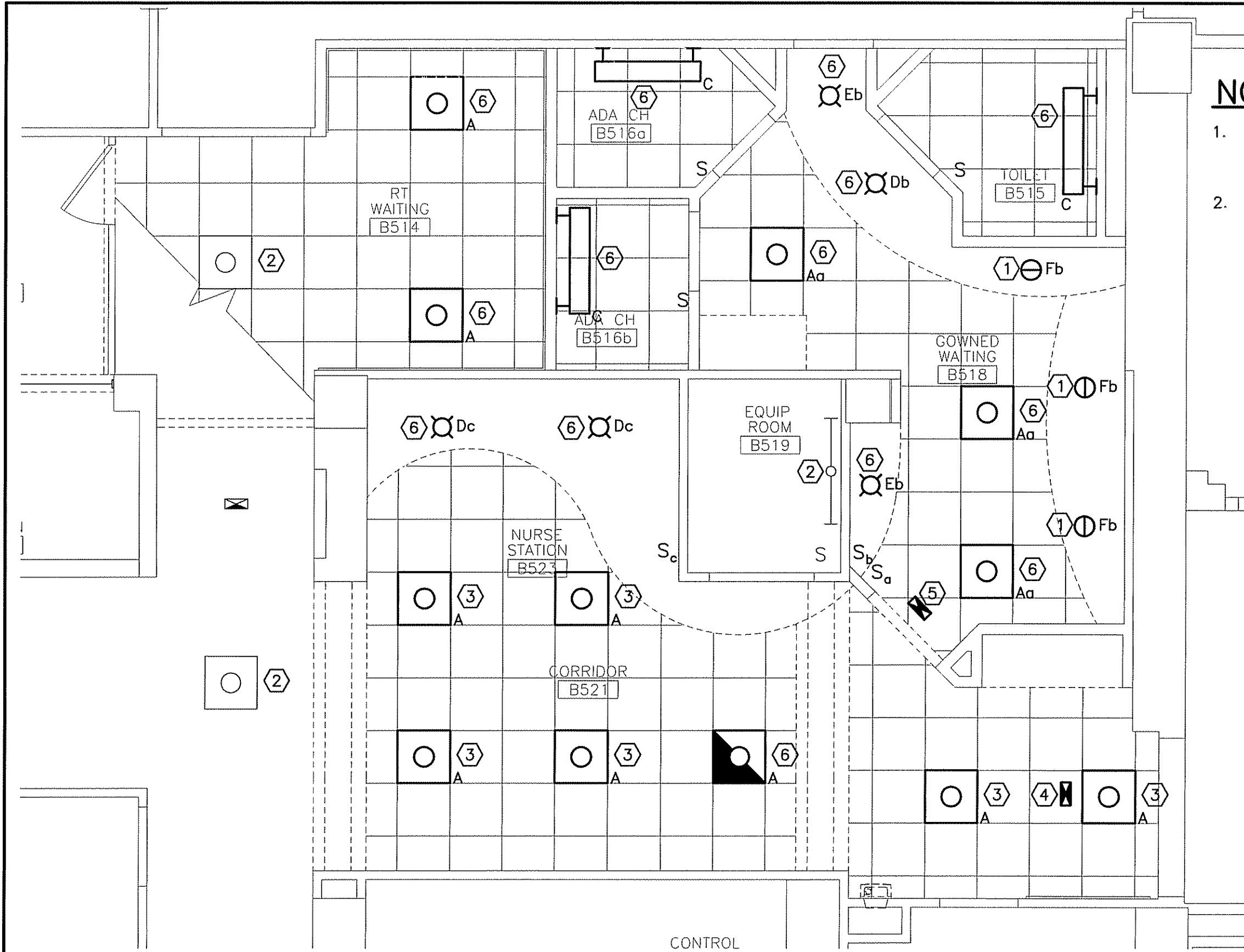
JC/DRAWN BY:	CDS
A/E OF RECORD:	JPP
SMRT CAD FILE:	EP102-06043
PROJECT No.:	06043
DATE:	12-8-06

SCALE:	1/4"=1'-0"
PROJECT MANAGER:	CDP
SHEET No.:	EP102

REV	DESCRIPTION	DATE



ARCHITECTURE ENGINEERING PLANNING  
SMART  
144 Fore Street/P.O. Box 618, PORTLAND, MAINE 04104  
tel. (207) 772-3846 / fax. (207) 772-1070

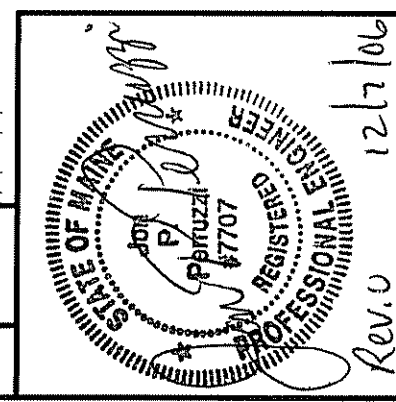




**NOTES:**

1. SEE SHEET E-001 FOR LEGEND AND GENERAL NOTES.
2. SEE EL102 FOR NOTES AND KEYED NOTES.

	
PROJECT: MAINE MEDICAL CENTER RADIATION THERAPY RENOVATIONS PORTLAND, MAINE	ARCHITECTURE ENGINEERING PLANNING SMRT 144 Fore Street/P.O. Box 618 PORTLAND, MAINE 04104 tel. (207) 772-3646 / fax. (207) 772-1070
SHEET TITLE: PARTIAL FLOOR PLAN LIGHTING	REV:      DESCRIPTION:      DATE:
	JC/DRAWN BY: CDS A/E OF RECORD: JPP SMRT CAD FILE: EL101-06043 PROJECT No: 06043 DATE: 12-8-06
CURRENT ISSUED STATUS: <b>ISSUED FOR CONSTRUCTION</b> 12-8-06	SCALE: 1/4"=1'-0" PROJECT MANAGER: CDP SHEET No. <b>EL101</b> <small>© copyright 2006, SMRT, INC.</small>



A1  
1/4"=1'-0"

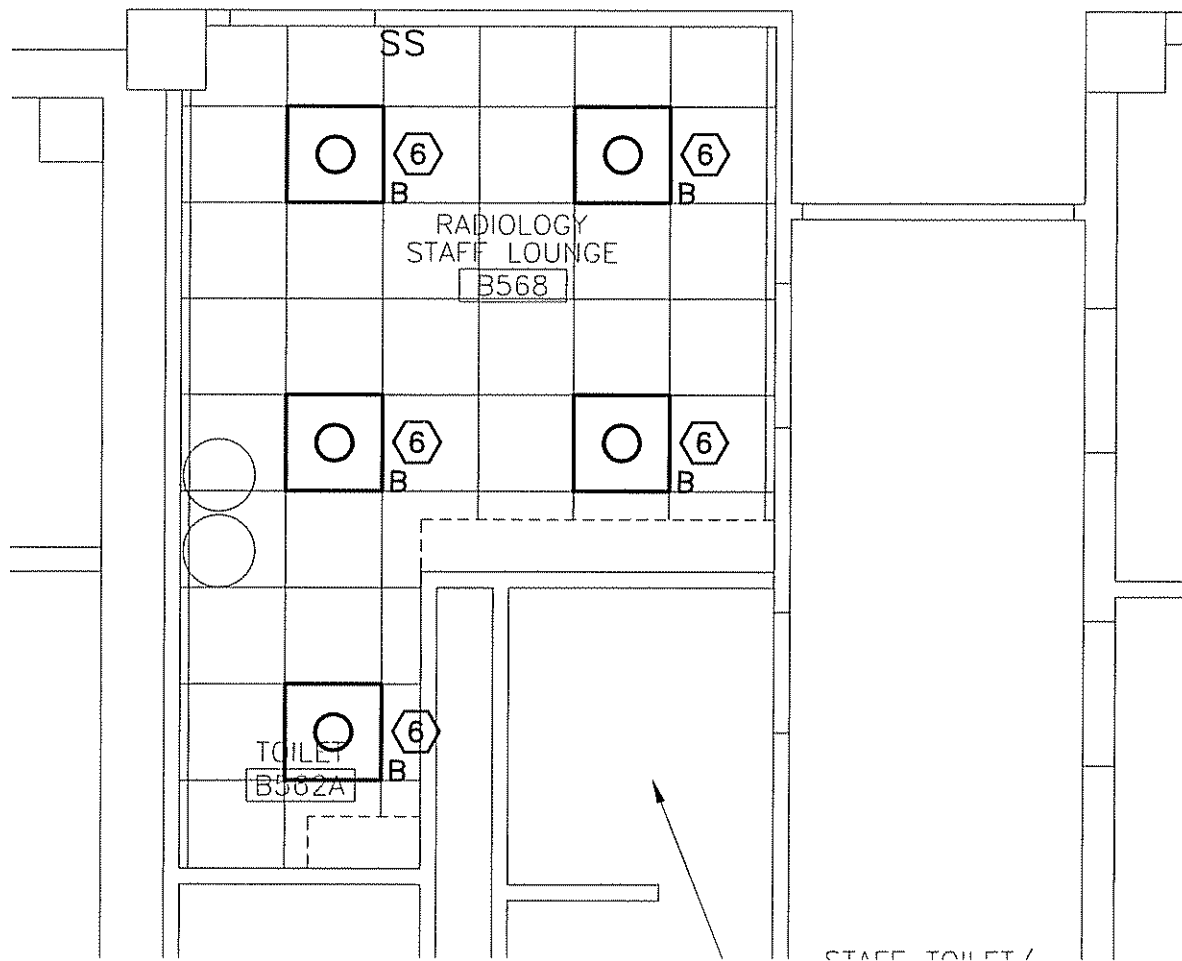
PARTIAL REFLECTED CEILING PLAN  
\*

# NOTES:

1. SEE SHEET E-001 FOR LEGEND AND GENERAL NOTES.

## KEYED NOTES:

- ① NEW LIGHT FIXTURE TO BE CONNECTED TO EXISTING LIGHTING BRANCH CIRCUIT SERVING THE AREA.
- ② EXISTING LIGHT FIXTURES TO BE MAINTAINED. CLEAN AND RELAMP. REPLACE ALL DEFECTIVE BALLASTS.
- ③ REINSTALL LIGHT FIXTURE REMOVED DURING DEMOLITION. CONNECT TO EXISTING SWITCHED LIGHTING BRANCH CIRCUIT SERVING THE CORRIDOR. CLEAN AND RELAMP. REPLACE ALL DEFECTIVE BALLASTS.
- ④ REINSTALL EXISTING EXIT SIGN REMOVED DURING DEMOLITION.
- ⑤ FURNISH AND INSTALL NEW EXIT SIGN TO MATCH EXISTING BUILDING STANDARD. CONNECT TO NEAREST EXIT SIGN BRANCH CIRCUIT.
- ⑥ REINSTALL LIGHT FIXTURE REMOVED DURING DEMOLITION. CONNECT TO EXISTING LIGHTING BRANCH CIRCUIT SERVING THE AREA. CLEAN AND RELAMP. REPLACE ALL DEFECTIVE BALLASTS.

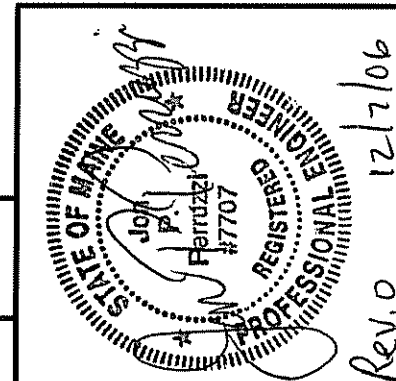


A5

PARTIAL FLOOR PLAN

1/4"=1'-0"

\*



CURRENT ISSUED STATUS:

**ISSUED FOR CONSTRUCTION**  
12-8-06

SCALE: 1/4"=1'-0"

PROJECT MANAGER: CDP

SHEET No.

EL102

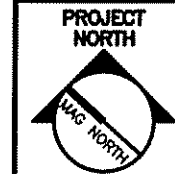
JC/DRAWN BY: CDS

A/E OF RECORD: JPP

SMRT CAD FILE: EL102-06043

PROJECT No: 06043

DATE: 12-8-06



PROJECT:

MAINE MEDICAL CENTER  
RADIATION THERAPY RENOVATIONS  
PORTLAND, MAINE

SHEET TITLE:

PARTIAL FLOOR PLAN  
LIGHTING

REV

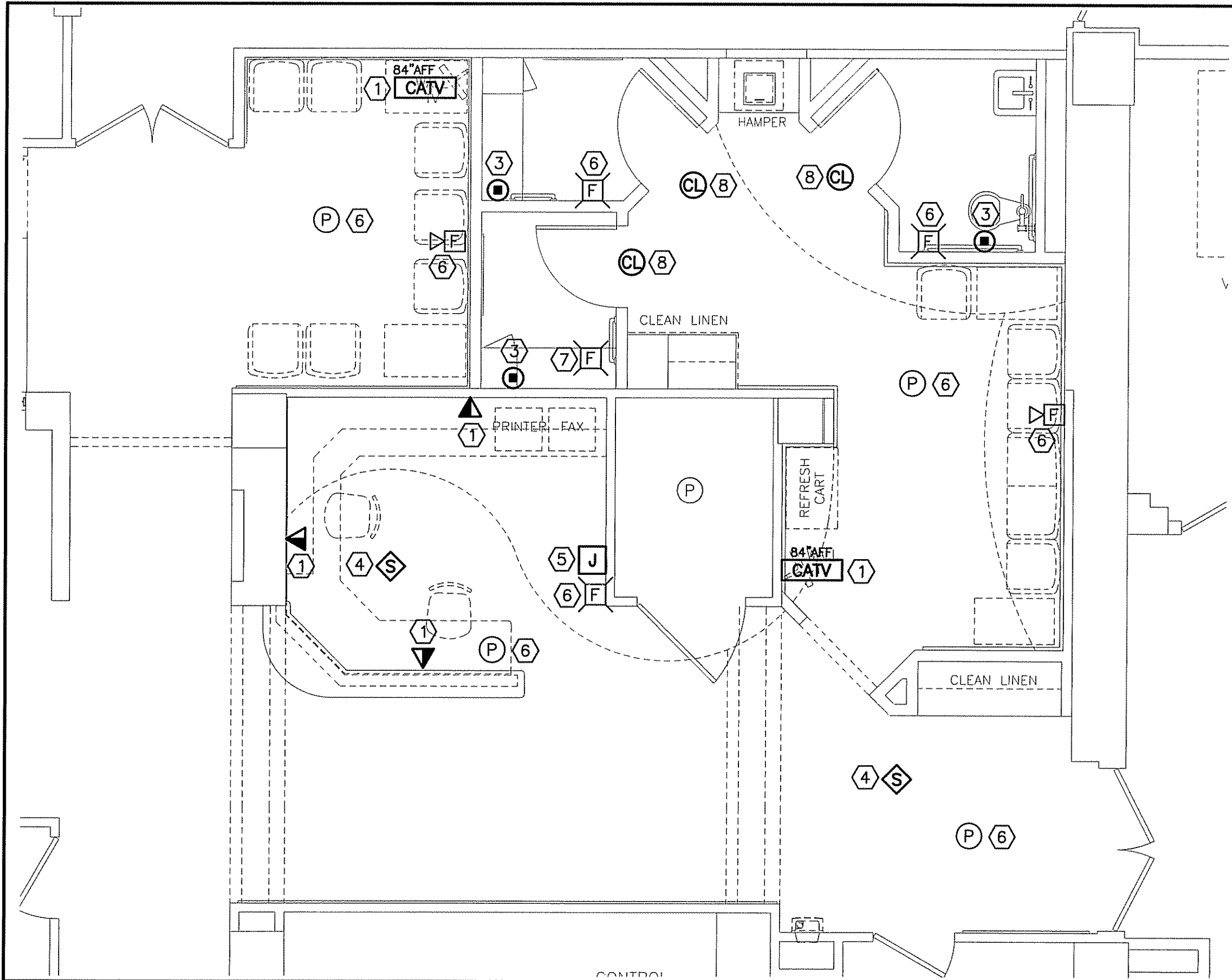
DESCRIPTION

DATE



ARCHITECTURE ENGINEERING PLANNING  
SMRT  
144 Fore Street/P.O. Box 618 PORTLAND, MAINE 04104  
tel. (207) 772-3846 / fax. (207) 772-1070





**NOTES:**

1. SEE SHEET E--001 FOR LEGEND AND GENERAL NOTES.
2. SEE EY102 FOR NOTES AND KEYED NOTES.



ARCHITECTURE ENGINEERING PLANNING  
 SMART  
 144 Fore Street/P.O. Box 618 PORTLAND, MAINE 04104  
 tel. (207) 772-3846 / fax. (207) 772-1070

REV	DESCRIPTION	DATE

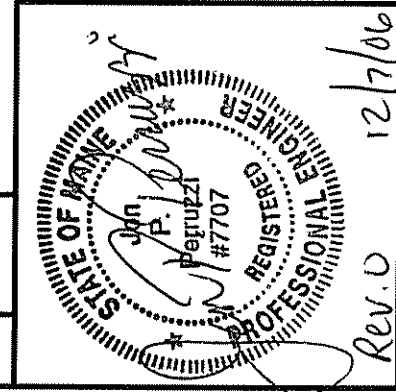
PROJECT: MAINE MEDICAL CENTER  
 RADIATION THERAPY RENOVATIONS  
 PORTLAND, MAINE

SHEET TITLE:  
 PARTIAL FLOOR PLAN  
 SYSTEMS

PROJECT NORTH	JC/DRAWN BY: CDS
	A/E OF RECORD: DJT
SMRT CAD FILE: EY101-06043	PROJECT No: 06043
DATE:	

CURRENT ISSUED STATUS:  
**ISSUED FOR CONSTRUCTION**  
 12-8-06

SCALE: 1/4"=1'-0"  
 PROJECT MANAGER: CDP  
 SHEET No. EY101  
 © COPYRIGHT 2008 SMRT, INC.



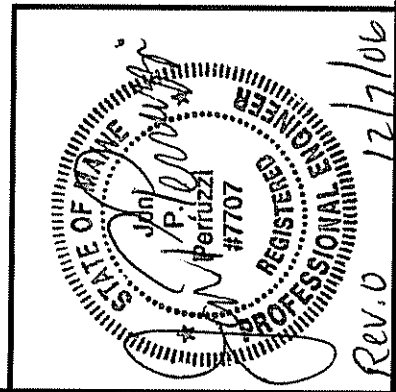
A1  
 1/4"=1'-0"

PARTIAL FLOOR PLAN  
 \*



# LIGHT FIXTURE SCHEDULE

TYPE	DESCRIPTION	MFR.	LAMPS	MOUNTING	NOTES
A	EXISTING 2'x2' RECESSED INDIRECT W/ PERFORATED STEEL DROP BASKET. <span style="float: right;">120V</span>	N/A	2-F17T8 3500K	CEILING RECESSED	
B	EXISTING 2'x2' RECESSED TROFFER W/ DROP OPAL ACRYLIC LENS. <span style="float: right;">120V</span>	N/A	2-F17T8 3500K	CEILING RECESSED	
C	EXISTING 4' SURFACE WALL BRACKET W/ ACRYLIC LENS <span style="float: right;">120V</span>	N/A	1-F23T8 3500K	SURFACE	
D	EXISTING 8" RECESSED LENSED DOWNLIGHT <span style="float: right;">120V</span>	N/A	1-32W TRIPLE	CEILING RECESSED	
E	EXISTING 5" RECESSED OPEN APERTURE DOWNLIGHT <span style="float: right;">120V</span>	N/A	1-26W TRIPLE	CEILING RECESSED	
F	NEW 6" RECESSED OPEN APERTURE WALL WASH. <span style="float: right;">120V</span>	PRESCOLITE CFR6 SERIES	1-26W TRIPLE	CEILING RECESSED	



Rev. 0 12/7/06

CURRENT ISSUED STATUS:

**ISSUED FOR CONSTRUCTION**  
**12-8-06**

SCALE: NONE  
 PROJECT MANAGER: CDP  
 SHEET No. **EL601**  
 JC/DRAWN BY: CDS  
 A/E OF RECORD: JPP  
 SMRT CAD FILE: EL601-06043  
 PROJECT No: 06043  
 DATE: 12-8-06

PROJECT:  
**MAINE MEDICAL CENTER  
 RADIATION THERAPY RENOVATIONS**  
 PORTLAND, MAINE

SHEET TITLE:  
**LIGHTING SCHEDULE**

REV	DESCRIPTION	DATE

**SM  
RT**

ARCHITECTURE ENGINEERING PLANNING  
 SMART  
 144 Fore Street/P.O. Box 618 PORTLAND, MAINE 04104  
 tel. (207) 772-3846 / fax. (207) 772-1070