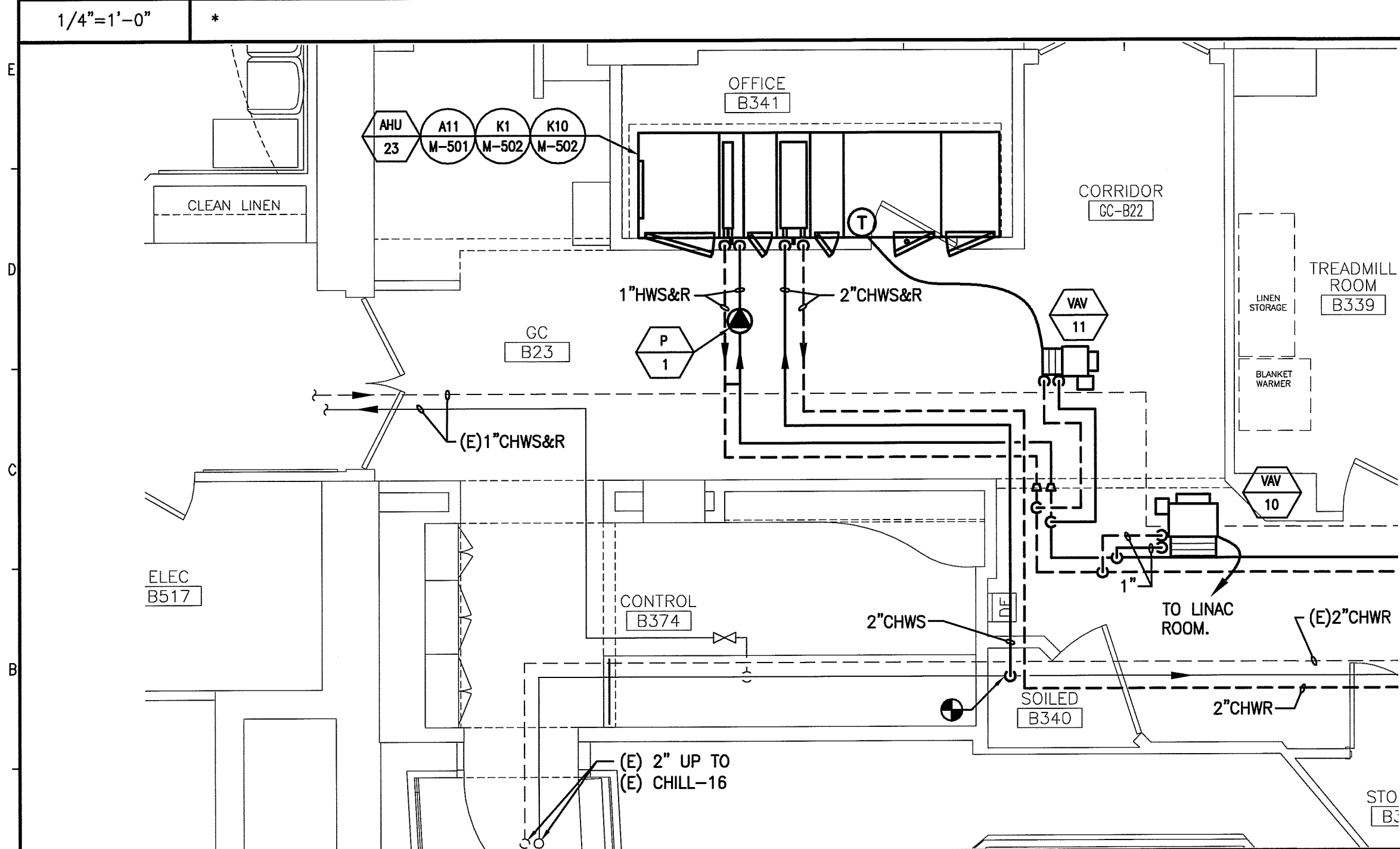
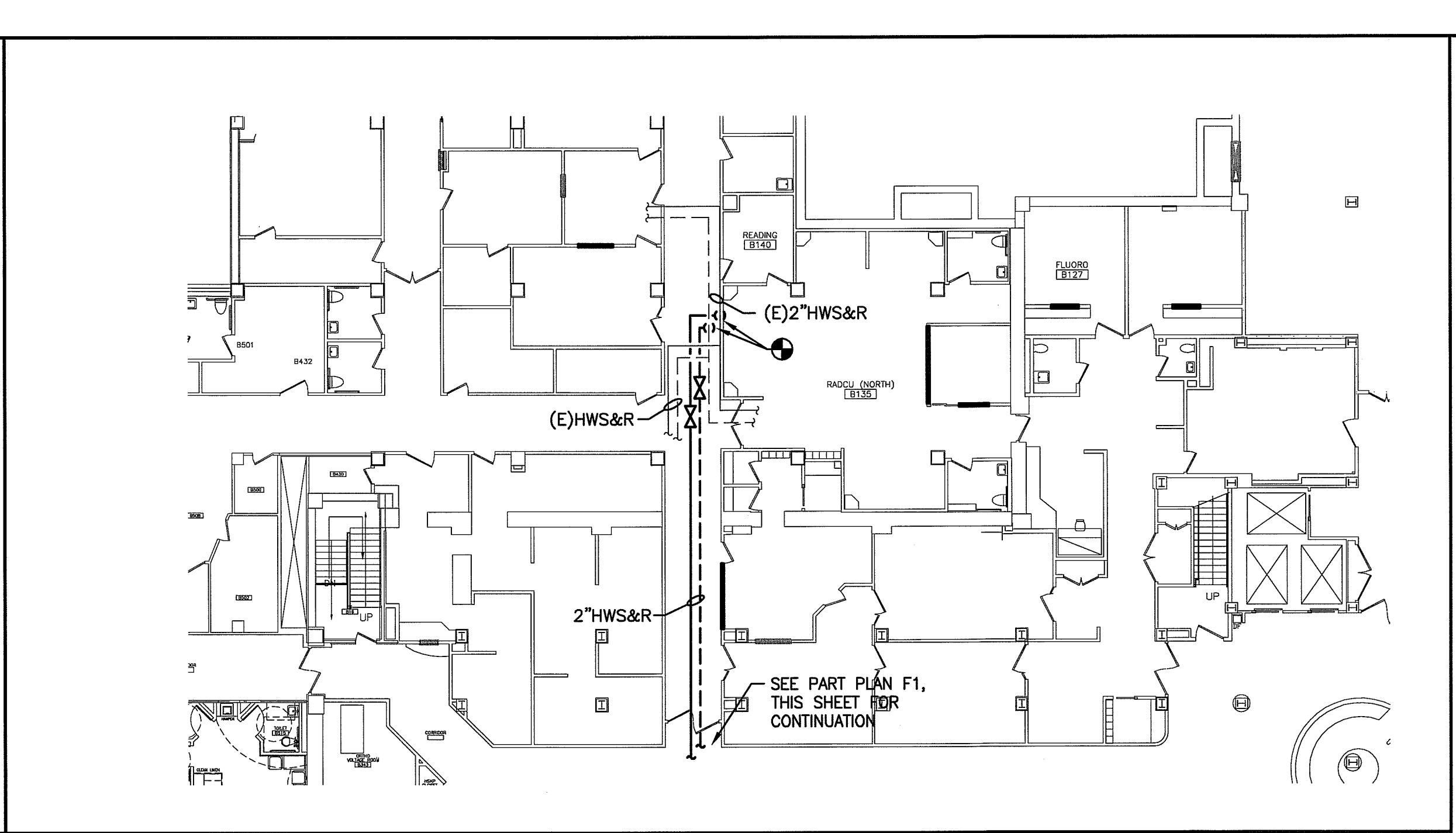


F1 HVAC PIPING PLAN



A1 HVAC PIPING PART PLAN



A7 HVAC PIPING PART PLAN

NOTES:

- SEE SHEET M-001 FOR LEGEND AND ABBREVIATIONS.
- VAV BRANCH RUNOUT PIPING SHALL BE 3/4" UNLESS NOTED OTHERWISE.

KEYED NOTES:

- ROUTE 3/4" LPS AND 1/2" LPR TO HUMIDIFIER H-1. CONNECT 3/4" LPS TO EXISTING STEAM PIPING IN MECHANICAL ROOM. ROUTE LPR TO EXISTING STEAM CONDENSATE RECEIVER.
- NEW END OF MAIN DRIP. SEE DETAIL E4/M-502

GRAPHIC SCALE: 0" 1"

SCALE: AS NOTED

PROJECT MANAGER: DJV
 JIC/DRAWN BY: FV
 A/E OF RECORD: KME
 CAD FILE: MP101-13128
 PROJECT NO: 13128
 DATE: 3-13-14
 SHEET TITLE: HVAC PIPING PLAN

SHEET No. **MP101**
 © COPYRIGHT 2013 SMART INC.

144 Fors Street P.O. Box 618
 Portland, Maine 04104
 tel. (207) 772-3846
 fax. (207) 772-1070
 www.smartinc.com

ARCHITECTURE
 ENGINEERING
 PLANNING
 INTERIOR DESIGN
 COMMISSIONING

SMART

PROJECT NORTH

STATE OF MAINE
 KATHERINE E. VAN DYKE
 LICENSED PROFESSIONAL ENGINEER
 2734

**MAINE MEDICAL CENTER
 NUCLEAR MEDICINE RENOVATIONS
 PORTLAND, MAINE**

**ISSUED FOR CONSTRUCTION
 3-13-14**

REV	DESCRIPTION	DATE
0	ISSUED FOR CONSTRUCTION	3-13-14

CURRENT ISSUE STATUS: