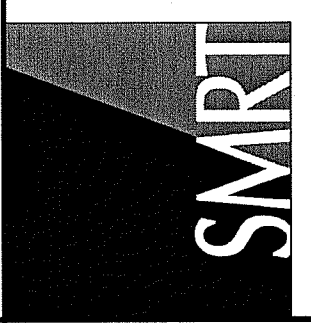


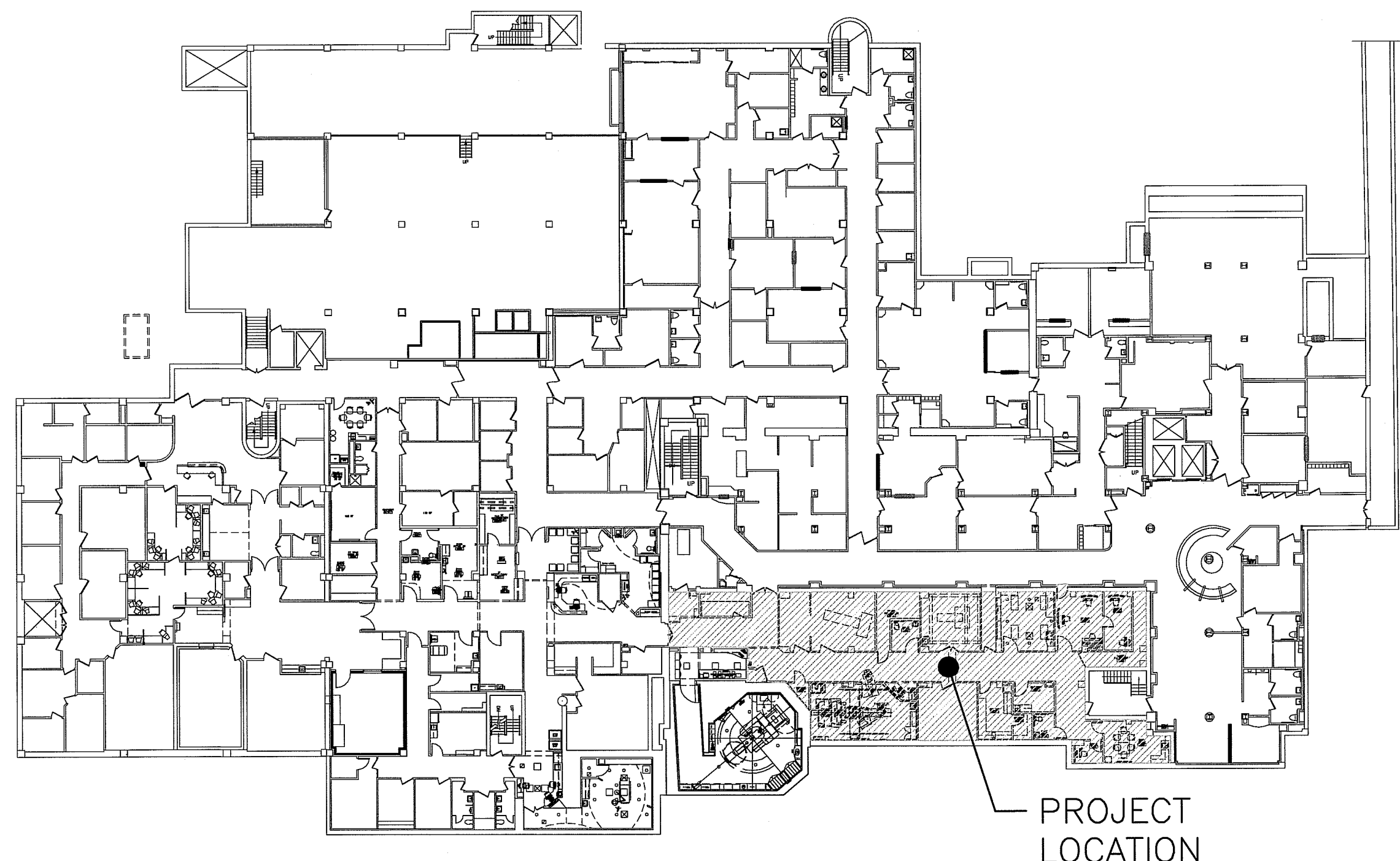
MAINE MEDICAL CENTER NUCLEAR MEDICINE RENOVATION Phase 1 BRAMHALL CAMPUS - PORTLAND, MAINE

144 Fore Street/P.O. Box 618
Portland, Maine 04104
Tel: (207) 772-3846
Fax: (207) 772-1070
www.smartinc.com

ARCHITECTURE
ENGINEERING
PLANNING
INTERIOR DESIGN
COMMISSIONING



SITE LOCATION MAP: NDF BASEMENT

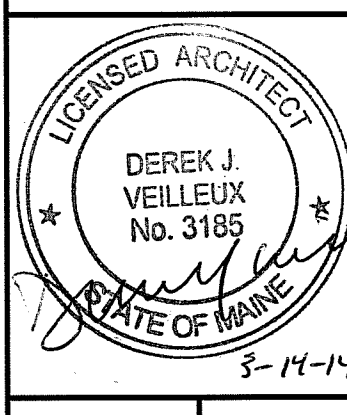
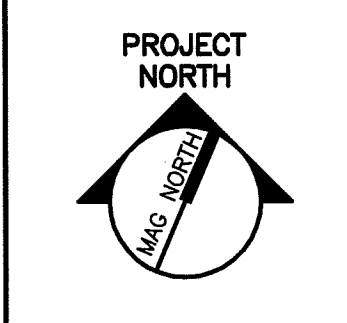


DRAWING LIST

- GENERAL**
- G1001 COVER SHEET
 - G1002 PARTITION TYPES AND TYPICAL MOUNTING HEIGHTS
- ARCHITECTURAL**
- A-100 PARTIAL FACILITY AND CODE COMPLIANCE PLAN
 - A-101 PHASING PLAN
 - AD101 DEMOLITION FLOOR PLAN
 - AE101 FLOOR PLAN
 - AE102 FLOOR PLAN, RCP, EXTERIOR ELEVATION AND SECTION PAVILION C
 - AE111 REFLECTED CEILING PLAN
 - AE210 INTERIOR ELEVATIONS
 - AE501 CASEWORK DETAILS AND MISC. DETAILS
 - AE601 SCHEDULES
 - AF101 ARCHITECTURAL FINISHES PLAN
- STRUCTURAL**
- SF101 FIRST FLOOR FRAMING PLAN AND NOTES
 - SF501 STRUCTURAL DETAILS
- FIRE PROTECTION**
- FP001 FIRE PROTECTION SPECIFICATIONS, ABBREVIATIONS, LEGEND, AND DETAILS
 - FP101 FIRE PROTECTION DEMOLITION AND NEW WORK PLANS
- MECHANICAL**
- M-001 HVAC LEGEND AND ABBREVIATIONS SPECIFICATIONS
 - M-002 SPECIFICATIONS
 - MD101 HVAC DEMOLITION PLAN
 - MD111 HVAC PIPING DEMOLITION PLAN
 - MH101 HVAC PLAN
 - MH102 HVAC GROUND FLOOR PLAN
 - MP101 HVAC PIPING PLAN
 - M-501 HVAC DETAILS
 - M-502 HVAC DETAILS
 - M-601 HVAC SCHEDULES
 - M-651 CONTROL DIAGRAMS AND SEQUENCES OF OPERATION
- PLUMBING**
- PL001 PLUMBING LEGEND AND ABBREVIATIONS
 - PL002 PLUMBING SPECIFICATIONS
 - PD101 PLUMBING DEMOLITION PLAN
 - PL101 PLUMBING NEW WORK PLAN
 - PL501 PLUMBING SCHEDULES AND DETAILS
- ELECTRICAL**
- E-001 LEGEND AND GENERAL NOTES SPECIFICATIONS
 - E-002 SPECIFICATIONS
 - ED101 ELECTRICAL DEMOLITION PLAN
 - E-100 OVERALL PLAN
 - EP101 POWER PLAN
 - EP401 ENLARGED POWER PLAN
 - EL101 LIGHTING PLAN
 - EY101 SYSTEMS PLAN
- SIEMENS SITE PLANNING (FOR REFERENCE ONLY)**
- A-101 EQUIPMENT PLANNING—LEGEND, DETAILS AND NOTES
 - A-102 SAFETY SERVICE CLEARANCE PLAN, DETAILS AND NOTES
 - S-101 STRUCTURAL PLAN—DETAILS AND NOTES
 - S-501 DETAILS AND NOTES
 - E-101 ELECTRICAL PLAN(S)—LEGEND AND NOTES
 - E-102 ELECTRICAL PLAN—LEGEND AND NOTES

| GRID LOCATION | TITLE |
|---------------|--------------------------|
| A1/A101 | BUILDING SECTION |
| A1/A101 | WALL SECTION |
| A1/A101 | DETAIL |
| | LEVEL LINE |
| | REVISION |
| | WINDOW TYPE |
| A50A0 | DOOR NUMBER |
| LOBBY A153 | ROOM NAME ROOM NUMBER |
| G14 A200 | INTERIOR ELEVATION |
| 15 | WALL TYPE |
| S | BACKER ROD AND SEALANT |
| A1/A101 | EXTERIOR ELEVATION |

| | |
|--------|---|
| A/C | AIR CONDITIONING |
| ACPLAS | ACOUSTICAL PLASTER |
| ACT | ACOUSTIC CEILING TILE |
| AFF | ABOVE FINISHED FLOOR |
| AP | ACCESS PANEL |
| BCE | BOTTOM CHORD EXTENSION |
| BD | BOARD |
| BLP | BORROWED LIGHT PANEL |
| BO | BOTTOM OF |
| BOF | BOTTOM OF FOOTING |
| BOS | BOTTOM OF STEEL |
| BS | BOTH SIDES |
| BSE | BSBRICK SHELF ELEVATION |
| C | CHANNEL |
| CB | CATCH BASIN; CHALKBOARD |
| CFM | CUBIC FEET PER MINUTE |
| CJ | CONTROL JOINT; CONSTRUCTION JOINT |
| CLG | CEILING |
| CMU | CONCRETE MASONRY UNIT |
| CT | CERAMIC TILE |
| CUH | CABINET UNIT HEATER |
| DF | DRINKING FOUNTAIN |
| DR | DISPLAY RAIL |
| DW | DISHWASHER |
| EF | EXHAUST FAN; EACH FACE |
| EJ | EXPANSION JOINT |
| EPDM | ETHYLENE PROPYLENE DIENE MONOMER |
| EW | EACH WAY |
| EWC | ELECTRIC WATER COOLER |
| FB | FLAT BAR |
| FBD | FURNISHED BY OTHERS |
| FCO | FLOOR CLEAN-OUT |
| FD | FLOOR DRAIN |
| FE | FIRE EXTINGUISHER |
| FF | FINISHED FLOOR; FAR FACE |
| FO | FRAMED OPENING |
| FS | FAR SIDE |
| GB | GRAB BAR |
| GC | GENERAL CONTRACTOR |
| GDT | GYPSON DROP-IN TILE |
| GWB | GYPSON WALL BOARD |
| H | HORIZONTAL |
| HC | HANDICAPPED; HOLLOW CORE |
| HM | HOLLOW METAL |
| HRU | HEAT RECOVERY UNIT |
| HT | HEIGHT |
| H&V | HEATING AND VENTILATING |
| HVAC | HEATING, VENTILATING AND AIR CONDITIONING |
| IF | INSIDE FACE |
| I | ISOLATION JOINT |
| INV | INVERT |
| JS | JOIST SUBSTITUTE |
| L | ANGLE |
| LLH | LONG LEG HORIZONTAL |
| LLV | LONG LEG VERTICAL |
| LP | LIGHTING PANEL; LIQUIFIED PROPANE |
| MB | MARKER BOARD |
| MDO | MEDIUM DENSITY OVERLAY |
| MO | MASONRY OPENING |
| MR | MOISTURE-RESISTANT |
| MUA | MAKE-UP AIR |
| N | NOSING |
| NIC | NOT IN CONTRACT |
| NS | NEAR SIDE |
| NTS | NOT TO SCALE |
| OC | ON CENTER |
| OF | OUTSIDE FACE |
| OH | OVERHEAD |
| PA | PUBLIC ADDRESS |
| PAF | POWDER-ACTUATED FASTENER |
| PL | PLATE |
| PLAM | PLASTIC LAMINATE |
| PLF | POUNDS PER LINEAR FOOT |
| PP | POWER PANEL |
| PSF | POUNDS PER SQUARE FOOT |
| PSI | POUNDS PER SQUARE INCH |
| PT | PRESSURE-TREATED |
| PVC | POLYVINYL CHLORIDE |
| PWP | PLASCORE WALL PANEL |
| R | RISER; RADIUS |
| RB | RESILIENT BASE |
| RD | ROOF DRAIN |
| RO | ROUGH OPENING |
| RR | RUB-RAIL |
| ACT | SUSPENDED ACOUSTIC TILE CEILING |
| SBO | SUPPLIED BY OWNER |
| IBC | INSTALLED BY CONTRACTOR |
| SC | SOLID CORE |
| SCHD | SCHEDULE |
| SF | SQUARE FOOT; SUPPLY FAN |
| SK | SHEAR KEY |
| SN | SANITARY NAPKIN (DISPENSER) |
| SP | SPACES |
| SS | STAINLESS STEEL |
| T | TREAD |
| TB | TACKBOARD |
| T&B | TOP AND BOTTOM |
| TBM | TEMPORARY BENCHMARK |
| TCE | TOP CHORD EXTENSION |
| TJ | TIE JOIST |
| TO | TOP OF |
| TOC | TOP OF CONCRETE |
| TOF | TOP OF FOOTING |
| TOM | TOP OF MASONRY |
| TOP | TOP OF PIER |
| TOS | TOP OF STEEL; TOP OF SLAB |
| TOW | TOP OF WALL |
| TP | TOILET PAPER (DISPENSER) |
| TS | |
| UH | UNIT HEATER |
| UNO | UNLESS NOTED OTHERWISE |
| V | VENT PIPE; VERTICAL |
| VB | VAPOR BARRIER |
| VCT | VINYL COMPOSITION TILE |
| VP | VISION PANEL |
| VTR | VENT THROUGH THE ROOF |
| W/ | WITH |
| WC | WATER CLOSET |
| WF | WIDE FLANGE |
| WH | WATER HEATER |
| W/O | WITHOUT |
| WP | WALL PROTECTION |
| WS | WEB STIFFENER |
| WWF | WELDED WIRE FABRIC |



MAINE MEDICAL CENTER
NUCLEAR MEDICINE RENOVATIONS
PORTLAND, MAINE

ISSUED FOR CONSTRUCTION
3-13-14

CURRENT ISSUE STATUS:

| ID | ISSUED FOR CONSTRUCTION DESCRIPTION | DATE |
|---------|-------------------------------------|------|
| 3-13-14 | | |

GRAPHIC SCALE:
0" 1"

SCALE: 1/4"=1'-0"
PROJECT MANAGER: DJV
JC/DRAWN BY: MDR
A/E OF RECORD: DJV
CAD FILE: G1001-1312B
PROJECT NO: 1312B
DATE: 3-13-14

SHEET TITLE:
COVER SHEET

SHEET No.
G1001

© COPYRIGHT 2013 SMART INC.