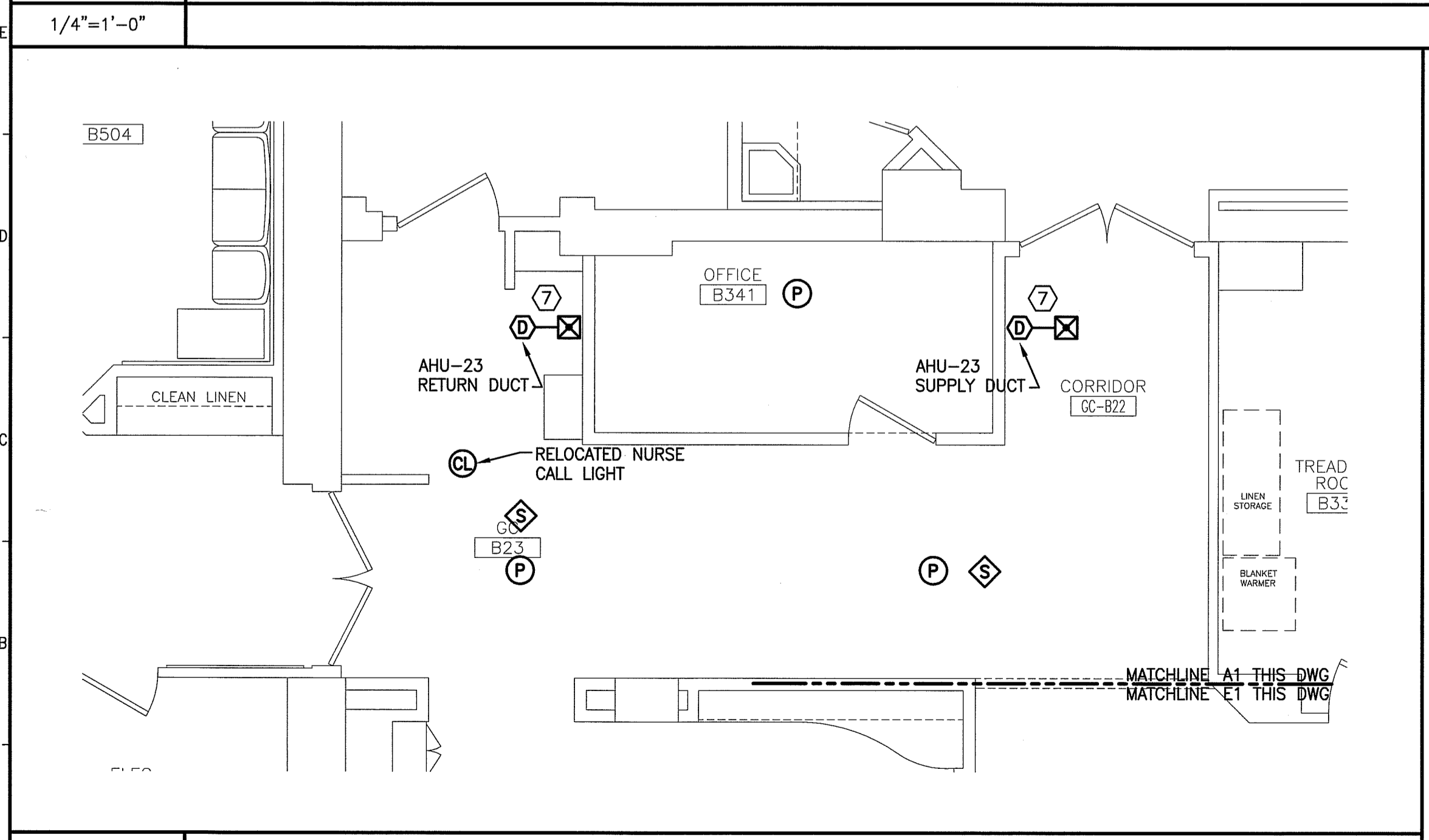


E1 FLOOR PLAN
1/4"=1'-0"



A1 PART PLAN
1/4"=1'-0"

KEYED NOTES:

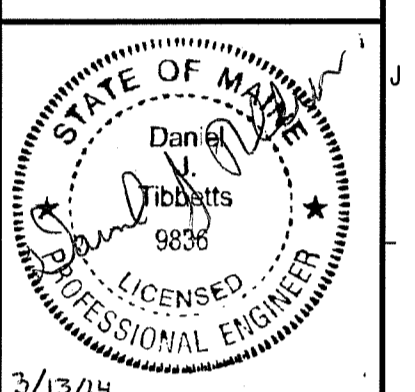
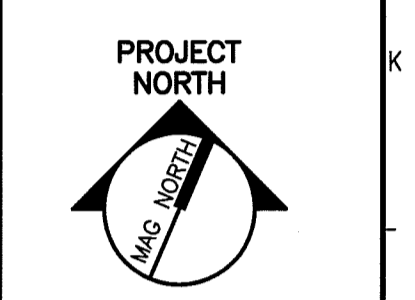
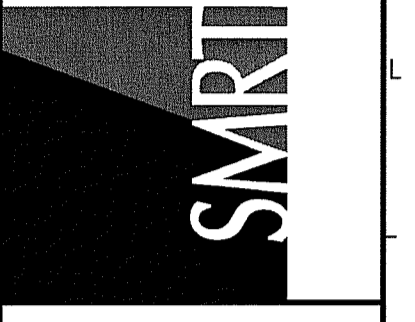
- ① RELOCATED CARD READER, DOOR RELEASE AND CARD ACCESS CONTROL PANEL. EXTEND EXISTING WIRING FROM EXISTING DEVICE LOCATIONS SHOWN ON ED101 AS REQUIRED TO ACCOMMODATE NEW LOCATION.
- ② RELOCATED SMOKE DETECTORS TO BE REINSTALLED AT LOCATIONS SHOWN. EXTEND EXISTING WIRING FROM EXISTING DEVICE LOCATIONS SHOWN ON ED101 AS REQUIRED TO ACCOMMODATE NEW DEVICE LOCATIONS. IN ADDITION TO THE SIX BEING RELOCATED PROVIDE FIVE ADDITIONAL SMOKE DETECTORS AND TIE INTO EXISTING FIRE ALARM SYSTEM.
- ③ MOUNT VOICE/DATA OUTLET 60" AFF TO BOTTOM OF DEVICE.
- ④ MOUNT VOICE/DATA OUTLET 42" AFF TO BOTTOM OF DEVICE.
- ⑤ PROVIDE JUNCTION BOX FOR CEILING MOUNT NURSE CALL DOME LIGHT PROVIDED AND INSTALLED BY OWNER'S NURSE CALL SYSTEM INSTALLER. COORDINATE ALL WORK WITH NURSE CALL SYSTEM INSTALLER.
- ⑥ FURNISH AND INSTALL 4" SQUARE JUNCTION BOX WITH ONE 3/4" EMT STUBBED TO ABOVE ACCESSIBLE CEILING IN CORRIDOR. PROVIDE PULL STRINGS AND RUBBER GASKETS BETWEEN CONDUITS AND BACK BOXES AND EACH WALL PENETRATION WILL REQUIRE A 3M QUICK PASS DEVICE COORDINATE WITH NURSE CALL SYSTEM INSTALLER PRIOR TO INSTALLATION.
- ⑦ NEW DUCT SMOKE DETECTORS FOR AHU-23 TO SHUT DOWN UNIT UPON DETECTION OF SMOKE AND REPORT A SUPERVISORY SIGNAL TO THE BUILDING FIRE ALARM SYSTEM. PROVIDE REMOTE TEST STATIONS FOR EACH DETECTOR IN HSKP CLOSET B345.

NOTES:

1. SEE SHEET E-001 FOR LEGEND AND GENERAL NOTES.
2. FOR ALL TELECOMMUNICATIONS DEVICES SHOWN FURNISH & INSTALL A SINGLE GANG BOX AND A 3/4" CONDUIT STUB UP TO ABOVE ACCESSIBLE CEILING. PROVIDE PULL STRINGS AND RUBBER GASKETS BETWEEN CONDUITS AND BACK BOXES. COORDINATE WITH OWNER'S TEL/DATA WIRING INSTALLER PRIOR TO INSTALLATION.
3. FOR EACH WALL PENETRATION OF WIRING FOR PAGING SPEAKERS, PHONES, NURSE CALL, TV, DATA AND OTHER LOW VOLTAGE SYSTEMS PROVIDE A 3M QUICK PASS DEVICE.

144 Fore Street, P.O. Box 618
Portland, Maine 04104
Tel. (207) 772-3846
Fax. (207) 772-1070
www.smrtd.com

ARCHITECTURE
ENGINEERING
PLANNING
INTERIOR DESIGN
COMMISSIONING



**MAINE MEDICAL CENTER
NUCLEAR MEDICINE RENOVATIONS**
PORTLAND, MAINE

**ISSUED FOR CONSTRUCTION
3-13-14**

CURRENT ISSUE STATUS:

REV	DESCRIPTION	DATE
0	ISSUED FOR CONSTRUCTION	3-13-14

GRAPHIC SCALE:
0" 1"

SCALE: 1/4"=1'-0"

PROJECT MANAGER: DJV
JC/DRAWN BY: CDS
A/E OF RECORD: DJT
CAD FILE: EY101-13128
PROJECT NO: 13128
DATE: 3-13-14
SHEET TITLE:

SYSTEMS PLAN

SHEET No.
EY101
© COPYRIGHT 2013 SMRT INC.