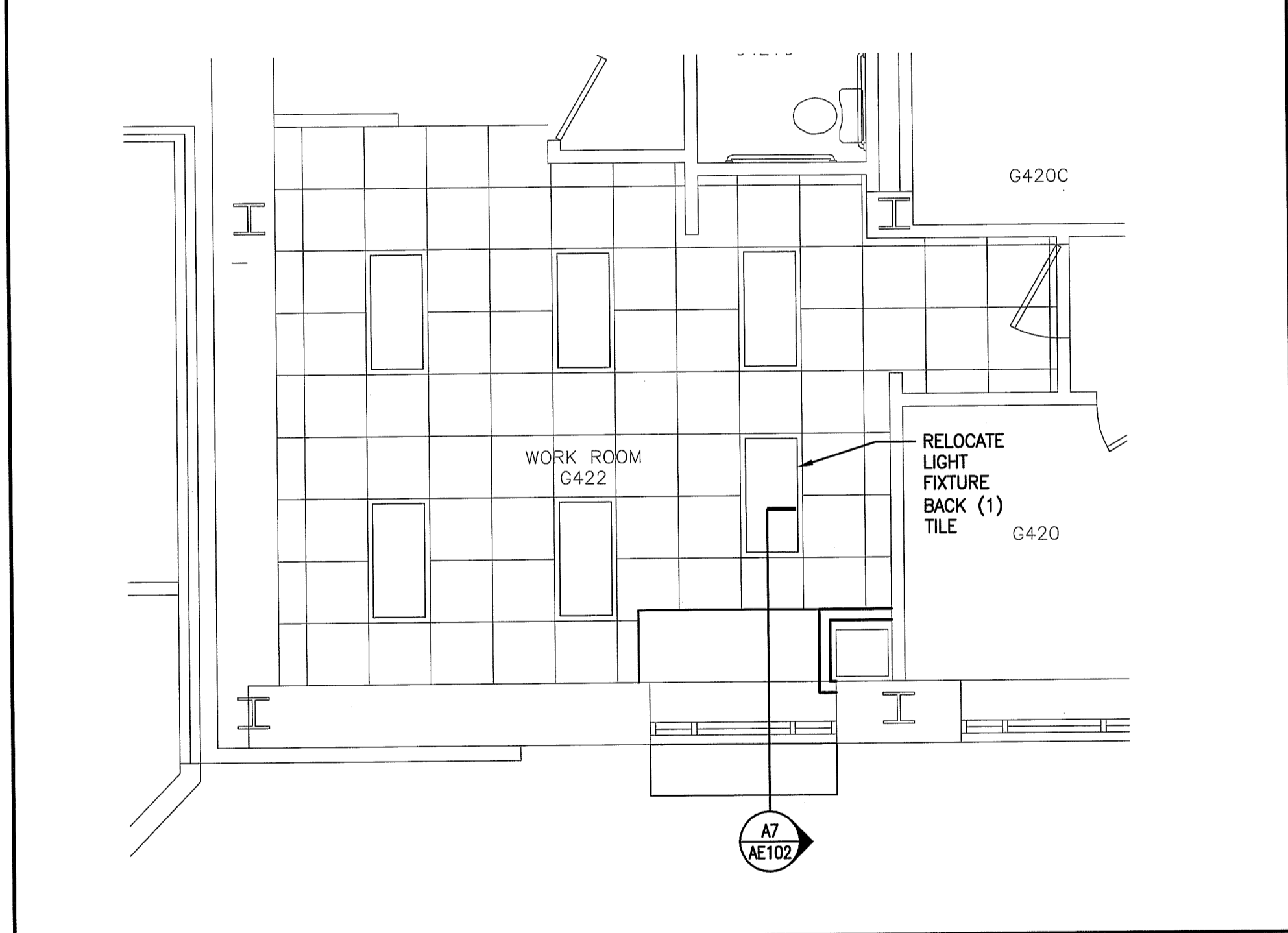
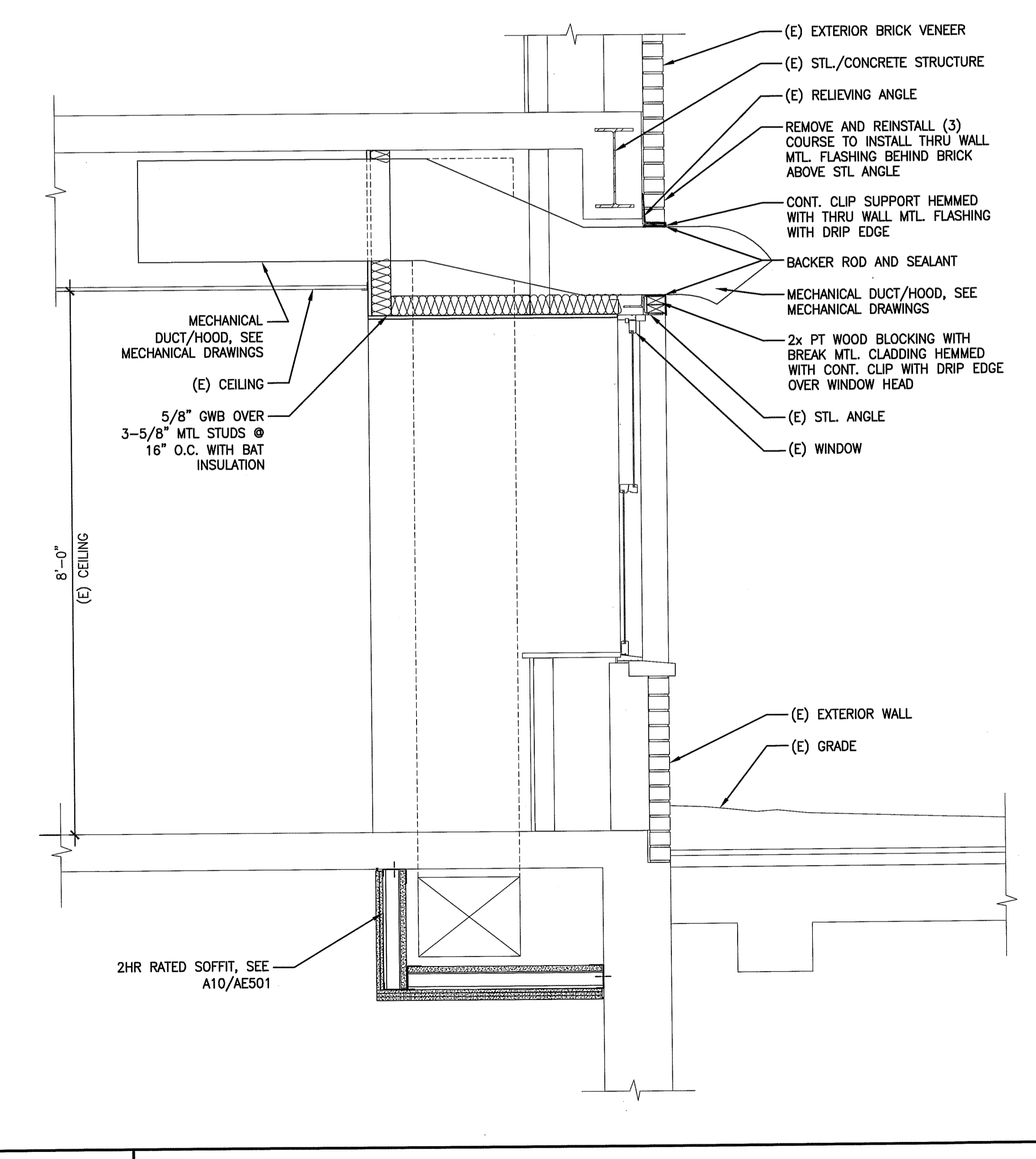
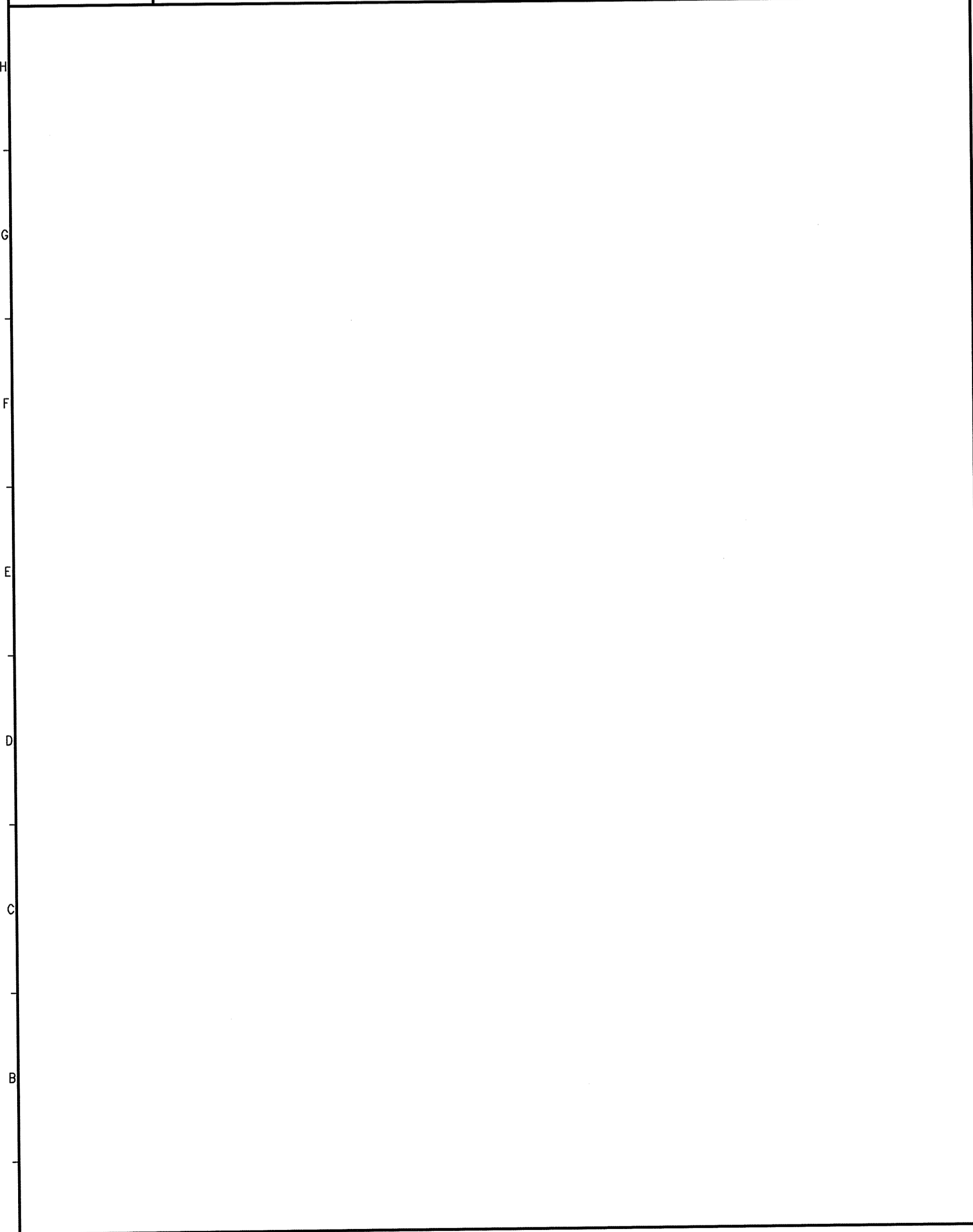


J1 *

J7 EXTERIOR ELEVATION - PAVILION C
1/4"=1'-0" *

J11 GROUND LEVEL FLOOR PLAN - PAVILION C
1/4"=1'-0" *



D11 GROUND LEVEL REFLECTED CEILING PLAN - PAVILION C
1/4"=1'-0" *

FLOOR PLAN NOTES:
1. SEE NOTES AND LEGENDS ON AE101

GRAPHIC SCALE:
0" 1"

SCALE: 1/4"=1'-0"
PROJECT MANAGER: DJV
JC/DRAWN BY: MDR
A/E OF RECORD: DJV
CAD FILE: AE102-13128
PROJECT NO: 13128
DATE: 3-13-14

SHEET TITLE:
FLOOR PLAN, RCP
EXTERIOR ELEVATION
AND SECTION
PAVILION C

F1 *

A7 SECTION - PAVILION C
3/4"=1'-0" *

144 Fore Street/P.O. Box 618
Portland, Maine 04104
tel. (207) 772-3946
fax. (207) 772-1070
www.smartinc.com

ARCHITECTURE
ENGINEERING
PLANNING
INTERIOR DESIGN
COMMISSIONING

SMART

PROJECT NORTH

LICENSED ARCHITECT
DEREK J. VILLEUX
No. 3169
STATE OF MAINE
3-14-14

MAINE MEDICAL CENTER
NUCLEAR MEDICINE RENOVATIONS
PORTLAND, MAINE

ISSUED FOR CONSTRUCTION
3-13-14

REV	DESCRIPTION	DATE
0	ISSUED FOR CONSTRUCTION	3-13-14

CURRENT ISSUE STATUS:

SHEET No.
AE102
© copyright 2013 SMART INC.