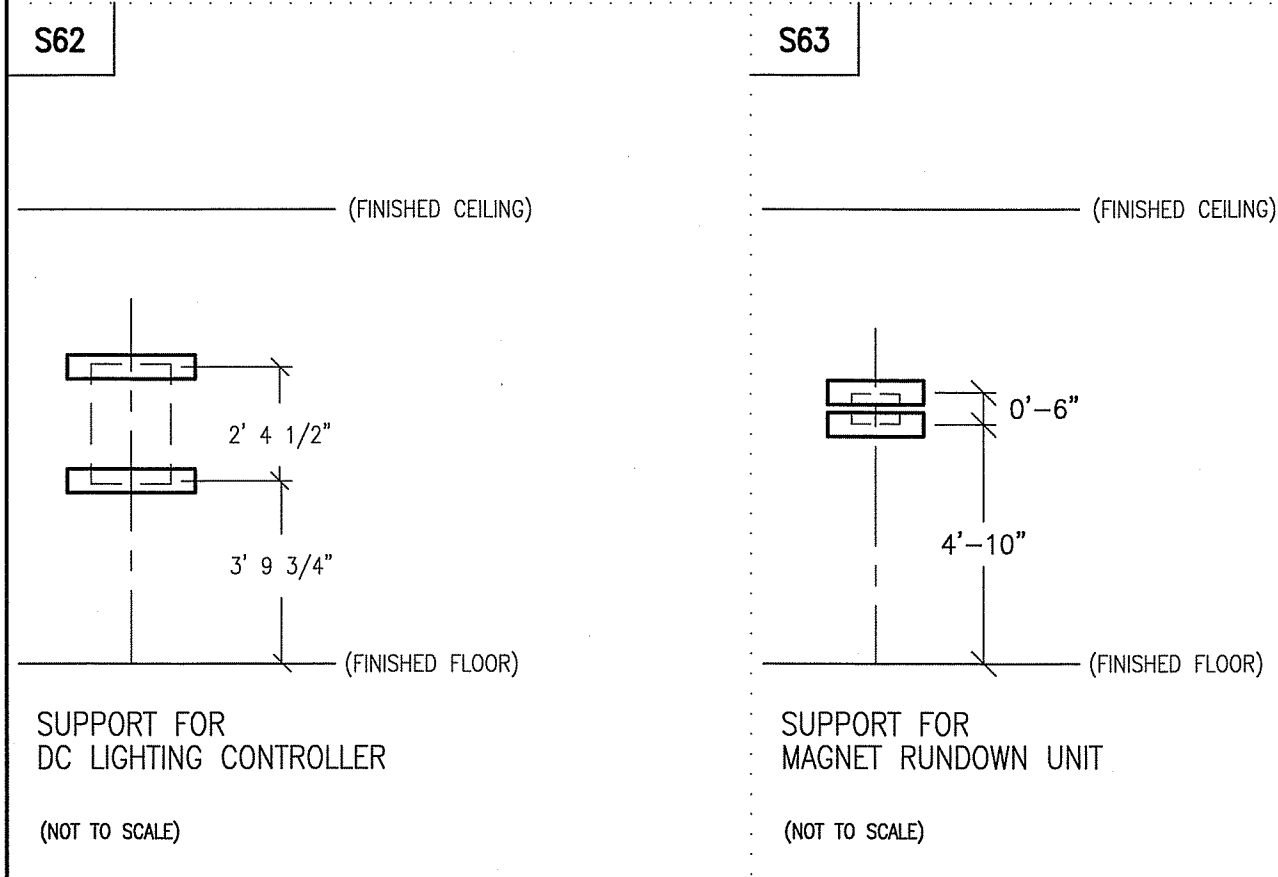
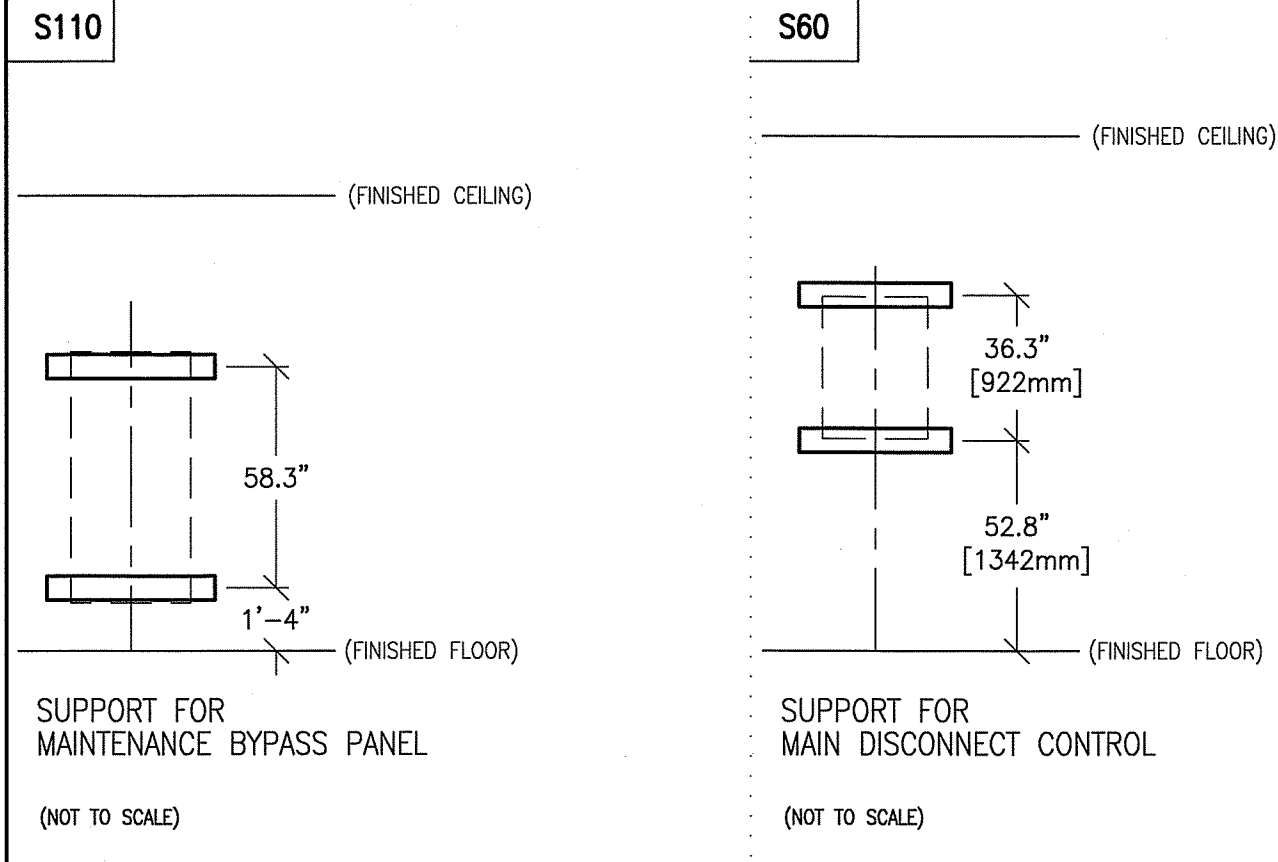


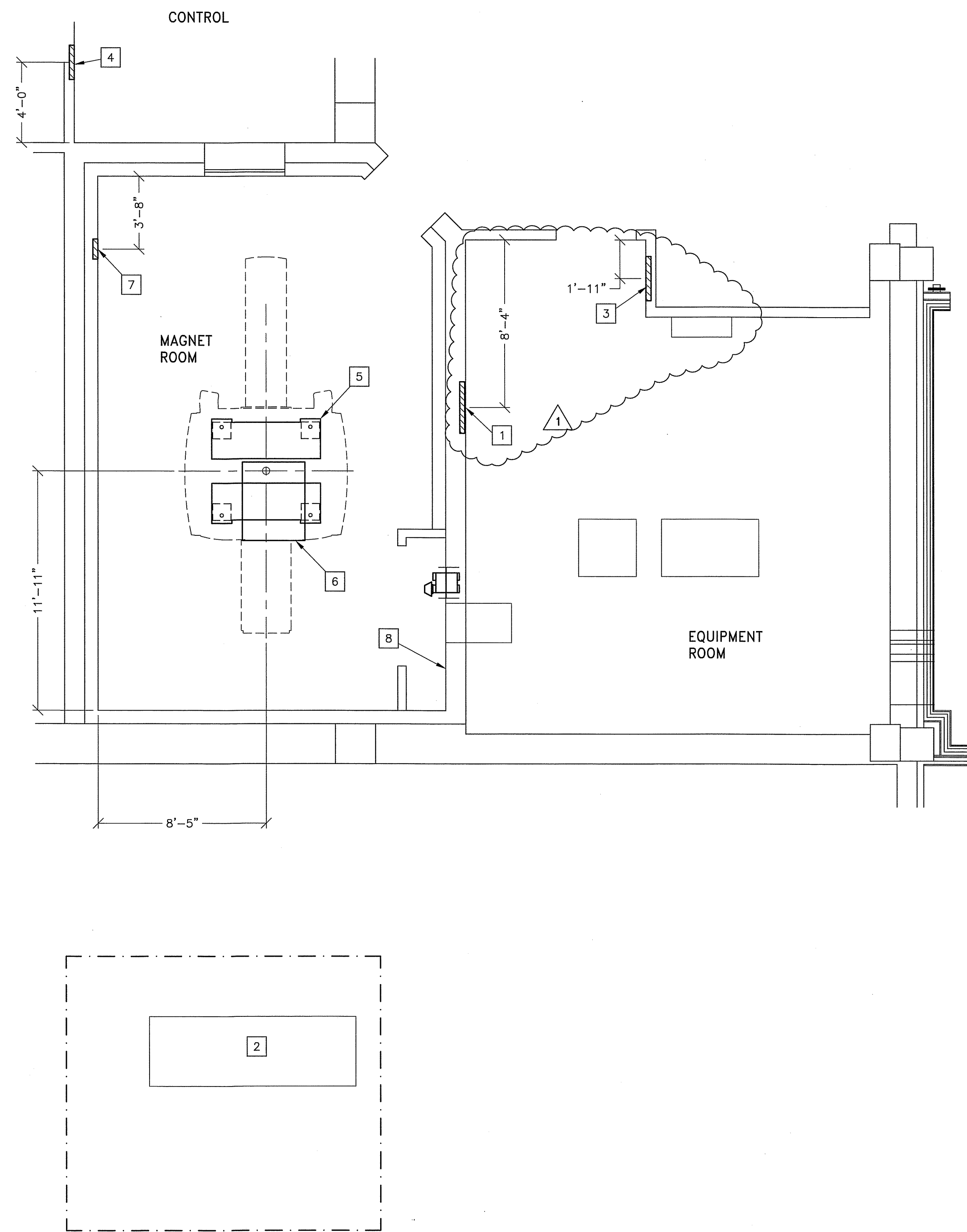
TYPICAL WALL SUPPORT ELEVATIONS



SCALE: 1/4" = 1'-0"

STRUCTURAL LAYOUT

RECOMMENDED CEILING HEIGHT = 8'-9"



GE Project Manager: JIM DOMBROSKI
Telephone: 603-934-3739
THE GE HP TECHNICAL SUPPORT GROUP IS AN ADDITIONAL RESOURCE THAT CAN PROVIDE ANSWERS FOR GENERAL GE PRODUCT SITING QUESTIONS AND CAN BE REACHED AT (877)-305-9877

STRUCTURAL SUPPORT METHODS
CUSTOMER/CONTRACTOR SUPPLIED AND INSTALLED ITEMS

ITEM NO.	ITEM DESCRIPTION (* INDICATES EXISTING)
1	SUPPORT BACKING, LOCATE AS SHOWN, REFER TO ELEVATION DETAIL S110, FOR MAINTENANCE BYPASS PANEL.
2	CONCRETE PAD FOR CHILLER - CONSULT MANUFACTURER FOR SPECIFICATIONS
3	SUPPORT BACKING, LOCATE AS SHOWN, REFER TO ELEVATION DETAIL S60, FOR MAIN DISCONNECT CONTROL.
4	SUPPORT BACKING, LOCATE AS SHOWN, REFER TO ELEVATION DETAIL S62, FOR DC LIGHTING CONTROL.
5	MAGNET FLOOR MOUNTING, SEE DETAIL M6630C ON SHEET S2 FOR MORE INFORMATION
6	CABLE ACCESS OPENING IN CEILING, SEE DETAIL ON SHEET S2.
7	SUPPORT BACKING, LOCATE AS SHOWN, REFER TO ELEVATION DETAIL S63, FOR MAGNET RUNDOWN UNIT.
8	SUITABLE WALL BACKING FOR CABLE STORAGE, CONSULT WITH FE OR PROJECT MANAGER

STRUCTURAL NOTES

- ALL UNITS THAT ARE WALL MOUNTED OR WALL SUPPORTED ARE TO BE PROVIDED WITH SUPPORTS WHERE NECESSARY. WALL SUPPORTS ARE TO BE SUPPLIED AND INSTALLED BY THE CUSTOMER OR HIS CONTRACTORS. SEE PLAN AND DETAIL SHEETS FOR SUGGESTED LOCATIONS AND MOUNTING HOLE LOCATIONS.
- DIMENSIONS ARE TO FINISHED SURFACES OF ROOM.
- CERTAIN MR PROCEDURES REQUIRE AN EXTREMELY STABLE ENVIRONMENT TO ACHIEVE HIGH RESOLUTION IMAGE QUALITY. VIBRATION IS KNOWN TO INTRODUCE FIELD INSTABILITIES INTO THE IMAGING SYSTEM. THE VIBRATION EFFECTS ON IMAGE QUALITY CAN BE MINIMIZED DURING THE INITIAL SITE PLANNING OF THE MR SUITE BY MINIMIZING THE VIBRATION ENVIRONMENT. SEE MOUNTING DETAIL ON SHEET S2 FOR ADDITIONAL INFORMATION.
- STANDARD STEEL STUDS, NAILS, SCREWS, CONDUIT, PIPING, DRAINS AND OTHER HARDWARE ARE ACCEPTABLE IF PROPERLY SECURED. ANY LOOSE STEEL OBJECTS CAN BE VIOLENTLY ACCELERATED INTO THE BORE OF THE MAGNET. CAREFUL THOUGHT SHOULD BE GIVEN TO THE SELECTION OF LIGHT FIXTURES, CABINETS, WALL DECORATIONS, ETC. TO MINIMIZE THIS POTENTIAL HAZARD. FOR SAFETY, ALL REMOVABLE ITEMS WITHIN THE MAGNET ROOM SUCH AS FAUCET HANDLES, DRAIN COVERS, SWITCH BOX COVER PLATES, LIGHT FIXTURE COMPONENTS, MOUNTING SCREWS, ETC. MUST BE NON-MAGNETIC. IF YOU HAVE A SPECIFIC QUESTION ABOUT MATERIAL, BRING IT TO THE ATTENTION OF YOUR GE PROJECT MANAGER OF INSTALLATIONS.
- FLOOR LEVELNESS IN THE MAGNET ROOM SHOULD NOT EXCEED 0.125 in. (3 mm) WHEN MEASURING BETWEEN DEPRESSIONS AND HIGH SPOTS OVER ANY 120 in. (3048 mm) DISTANCE WITHIN THE 87.5 in. (2178 mm) BY 139.3 in. (3539 mm) AREA OF THE MAGNET ENCLOSURE AND THE AREA IN FRONT OF THE ENCLOSURE. THIS FLOOR LEVELNESS REQUIREMENT IS IMPORATANT FOR ACCURATE PATIENT TABLE DOCKING.
- NON-MOVABLE STEEL SUCH AS WALL STUDS OR HVAC COMPONENTS WILL PRODUCE NEGLIGIBLE EFFECT ON THE ACTIVE SHIELD MAGNET.
- CUSTOMERS CONTRACTOR MUST PROVIDE ALL PENETRATIONS IN POST TENSION FLOORS.
- CUSTOMERS CONTRACTOR MUST PROVIDE AND INSTALL ANY NON-STANDARD ANCHORING. DOCUMENTS FOR STANDARD ANCHORING METHODS ARE INCLUDED WITH GE EQUIPMENT DRAWINGS FOR GEOGRAPHIC AREAS THAT REQUIRE SUCH DOCUMENTATION.
- CUSTOMERS CONTRACTOR MUST PROVIDE AND INSTALL HARDWARE FOR "THROUGH THE FLOOR" ANCHORING AND/OR ANY BRACING UNDER ACCESS FLOORS. THIS CONTRACTOR MUST ALSO PROVIDE FLOOR DRILLING THAT CANNOT BE COMPLETED BECAUSE OF AN OBSTRUCTION ENCOUNTERED WHILE DRILLING BY THE GE INSTALLER SUCH AS REBAR ETC.
- CUSTOMERS CONTRACTOR TO PROVIDE AND INSTALL APPROPRIATE SUPPORTS FOR THE STORAGE OF EXCESS CABLES.
- IT IS THE CUSTOMER'S RESPONSIBILITY TO PERFORM ANY FLOOR OR WALL PENETRATIONS THAT MAY BE REQUIRED. THE CUSTOMER IS ALSO RESPONSIBLE FOR ENSURING THAT NO SUBSURFACE UTILITIES (E.G., ELECTRICAL OR ANY OTHER FORM OF WIRING, CONDUITS, PIPING, DUCT WORK OR STRUCTURAL SUPPORTS (I.E. POST TENSION CABLES OR REBAR)) WILL INTERFERE OR COME IN CONTACT WITH SUBSURFACE PENETRATION OPERATIONS (E.G. DRILLING AND INSTALLATION OF ANCHORS/SCREWS) PERFORMED DURING THE INSTALLATION PROCESS. TO ENSURE WORKER SAFETY, GE INSTALLERS WILL PERFORM SURFACE PENETRATION OPERATIONS ONLY AFTER THE CUSTOMER'S VALIDATION AND COMPLETION OF THE "GE SURFACE PENETRATION PERMIT"

GE Healthcare
Healthcare Project Implementation - Design Center
Milwaukee, Wisconsin

SHEET TITLE: STRUCTURAL LAYOUT
MODALITY TYPE: DISCOVERY MR 750w GEM
THIS PLAN IS SUBMITTED TO SUGGEST LOCATION OF GE HEALTHCARE EQUIPMENT AND ASSOCIATED APPARATUS, ELECTRICAL WIRING DETAILS AND ROOM ARRANGEMENTS. IT IS NOT TO BE USED FOR ACTUAL CONSTRUCTION PURPOSES. HOWEVER, AND THE COMPANY CANNOT ACCEPT RESPONSIBILITY FOR ANY DAMAGES RESULTING THEREFROM.

PROJECT TITLE:
MAINE MEDICAL CENTER
PORTLAND, MAINE

PROJECT	REVISION
132054	01

DATE: 02.Jul.13
DRAWN BY: MCK
CHECKED BY: JGA
CON NO: 4108424
CON DT: 27.Jun.13

REVISION HISTORY:

1	KMR - 26.Aug.13
	CHECKED BY: PIM

SHEET
S1