

NOTE:
 1. SEE SHEET M-001 FOR LEGEND AND ABBREVIATIONS.

KEYED NOTES:

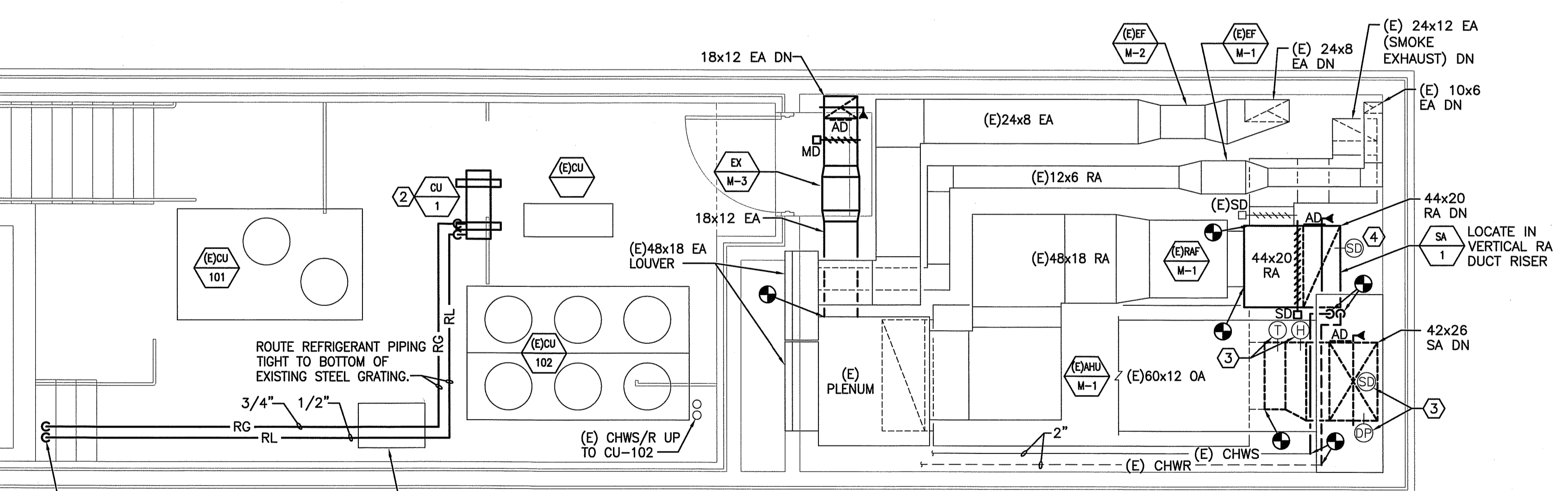
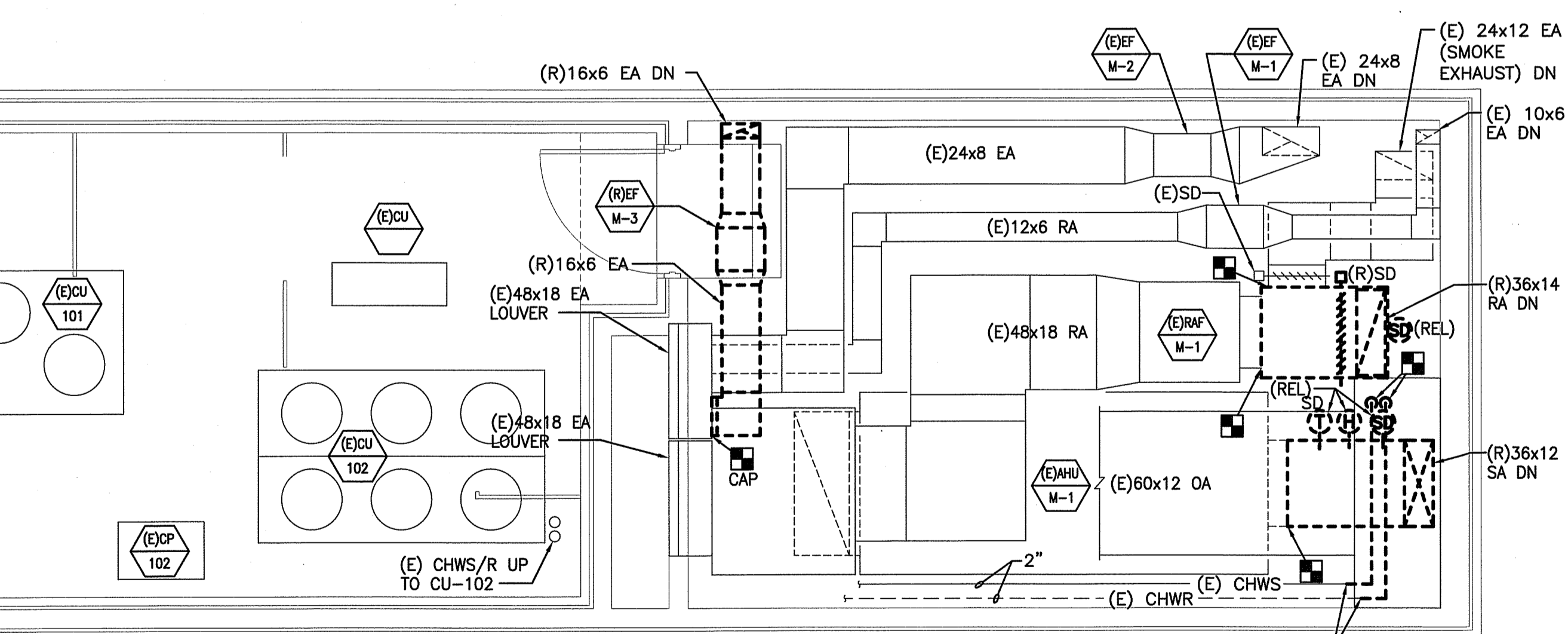
- ① RETURN EXISTING CHILLER TO OWNER.
- ② MOUNT CONDENSING UNIT ON 4"x4"x24" LONG PRESSURE TREATED WOOD SLEEPERS. CONDENSING UNIT SHALL BE FASTENED TO SLEEPERS, AND SLEEPERS SHALL BE THRU BOLTED TO EXISTING STEEL GRATE FLOORING. MAINTAIN MINIMUM CLEARANCES ON ALL SIDES OF UNIT PER MANUFACTURER.
- ③ RELOCATE EXISTING TEMPERATURE SENSOR, HUMIDISTAT, SMOKE DETECTOR, AND DIFFERENTIAL PRESSURE SENSOR TO NEW SUPPLY DUCT.
- ④ RELOCATE EXISTING SMOKE DETECTOR TO NEW RETURN DUCT.

G1 ROOF PIPING DEMOLITION PART PLAN

G8 ROOF PIPING PART PLAN

1/4" = 1'-0" *

1/4" = 1'-0" *



A1 MECHANICAL ROOM HVAC DEMOLITION PART PLAN

A8 MECHANICAL ROOM HVAC PART PLAN

1/4" = 1'-0" *

1/4" = 1'-0" *

144 Fore Street/P.O. Box 618
 Portland, Maine 04104
 Tel. (207) 772-3646
 Fax. (207) 772-1070
 www.smri-inc.com

ARCHITECTURE
 ENGINEERING
 PLANNING
 INTERIOR DESIGN
 COMMISSIONING

SMRI

PROJECT NORTH

STATE OF MAINE
 KATHERINE M. EVERETT
 No. 7599
 LICENSED PROFESSIONAL ENGINEER
 9-2013

MAINE MEDICAL CENTER
 MRI #1 AND READING ROOM RENOVATION
 PORTLAND, MAINE

ISSUED FOR CONSTRUCTION 9-20-13

CURRENT ISSUE STATUS:

REV	DESCRIPTION	DATE
0	ISSUED FOR CONSTRUCTION	9-20-13

GRAPHIC SCALE:
 0" 1"

SCALE: 1/4" = 1'-0"
 PROJECT MANAGER: D.V.
 JC/DRAWN BY: M.B.
 A/E OF RECORD: K.M.
 CAD FILE: M-401-12118
 PROJECT NO: 12118
 DATE: 9-20-13

SHEET TITLE:
MECHANICAL PART PLANS

SHEET No.
M-401