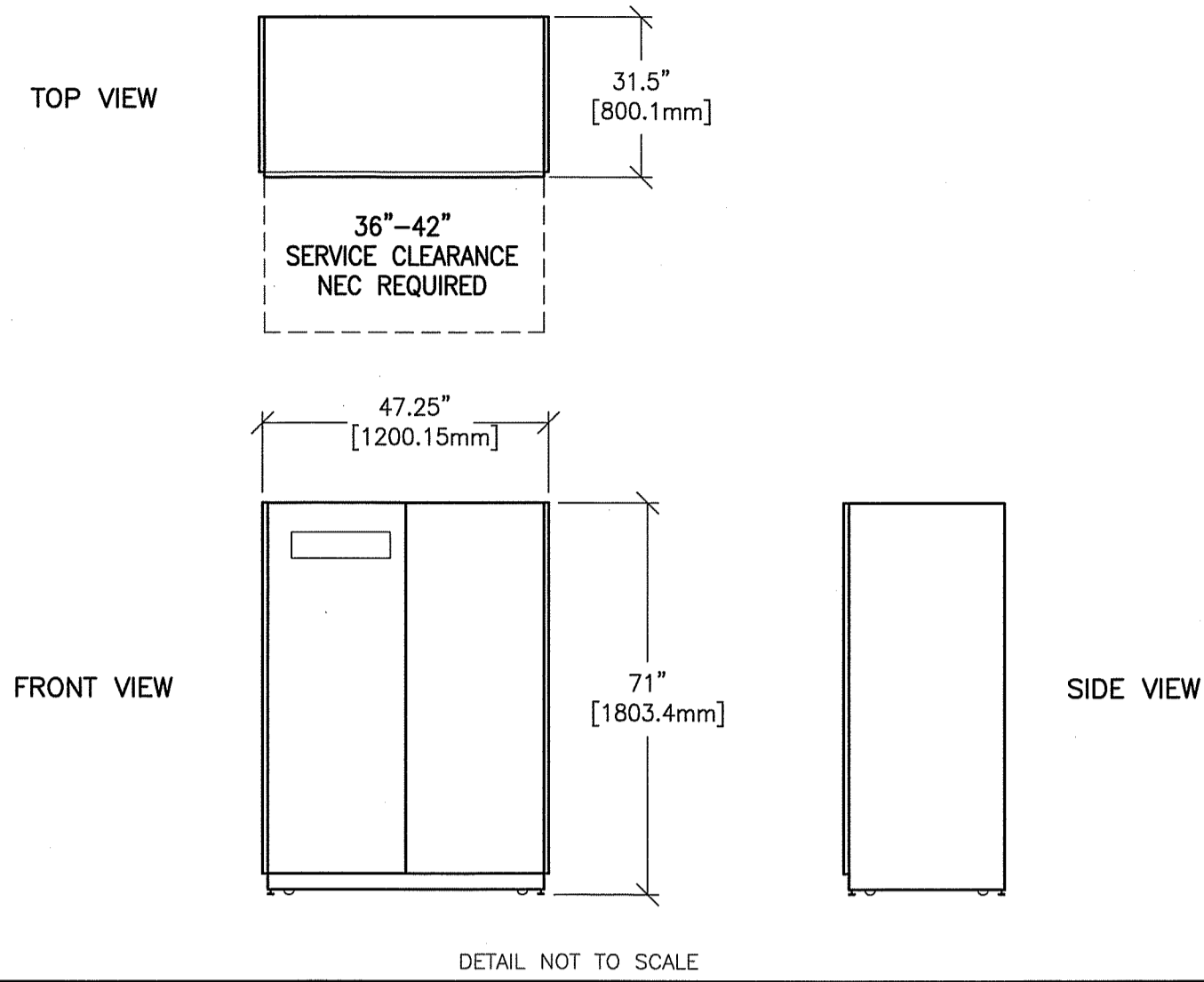


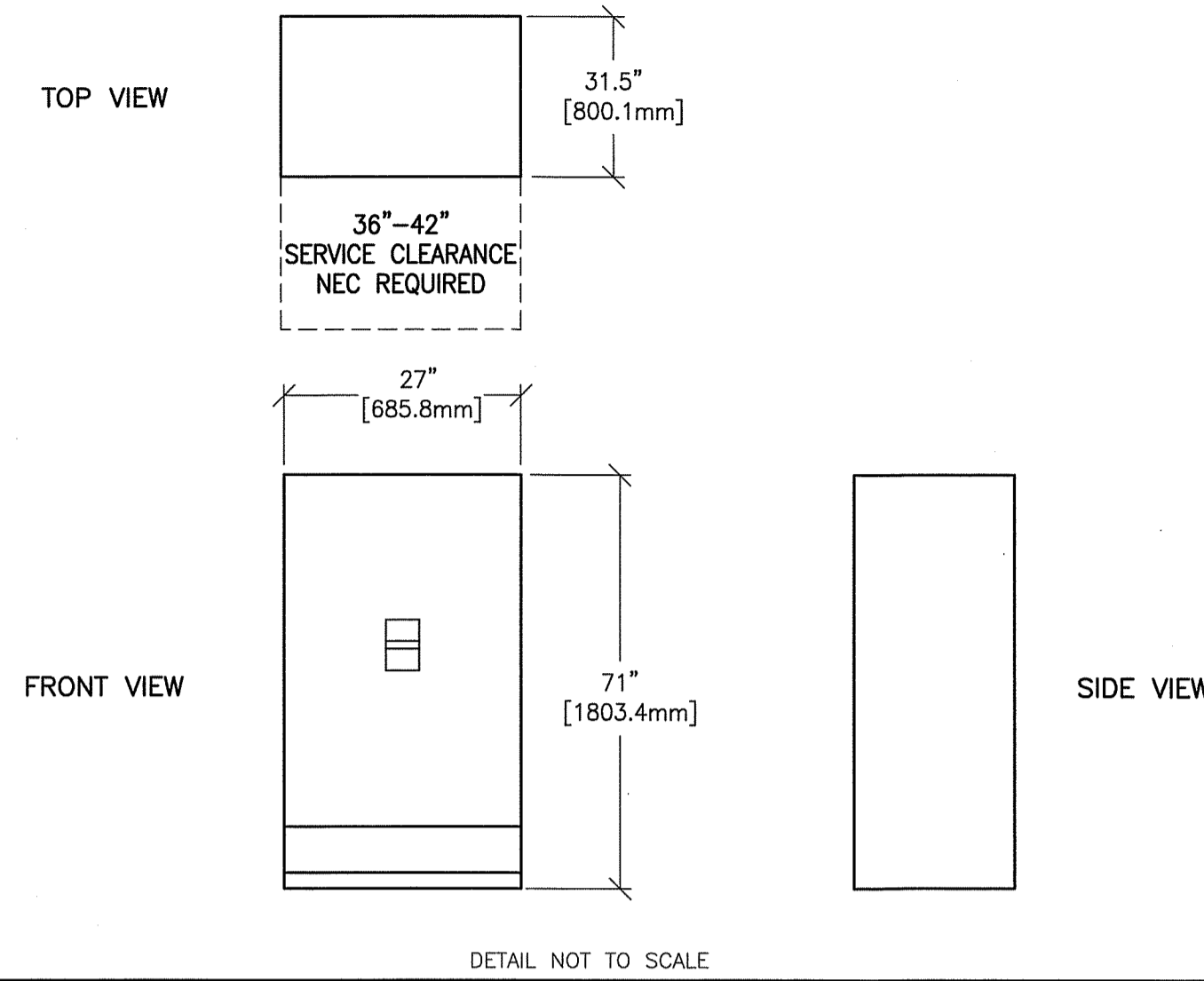
EQUIPMENT DETAIL
GEDE 150 KVA UPS MODULE

E4502FD
REV. DATE: 4/21/09



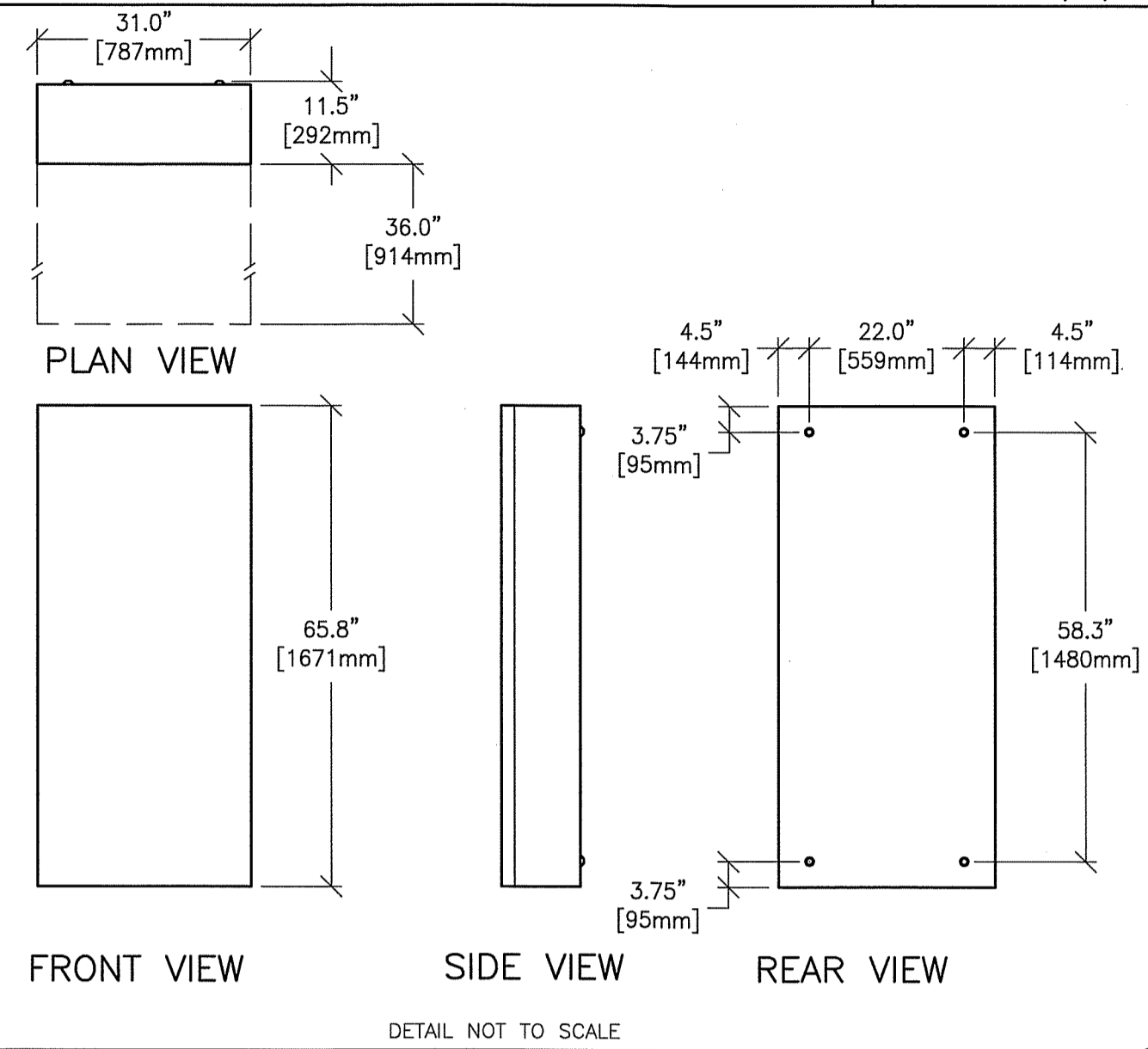
EQUIPMENT DETAIL
GEDE 150 KVA BATTERY CABINET

E4502F2
REV. DATE: 4/21/09



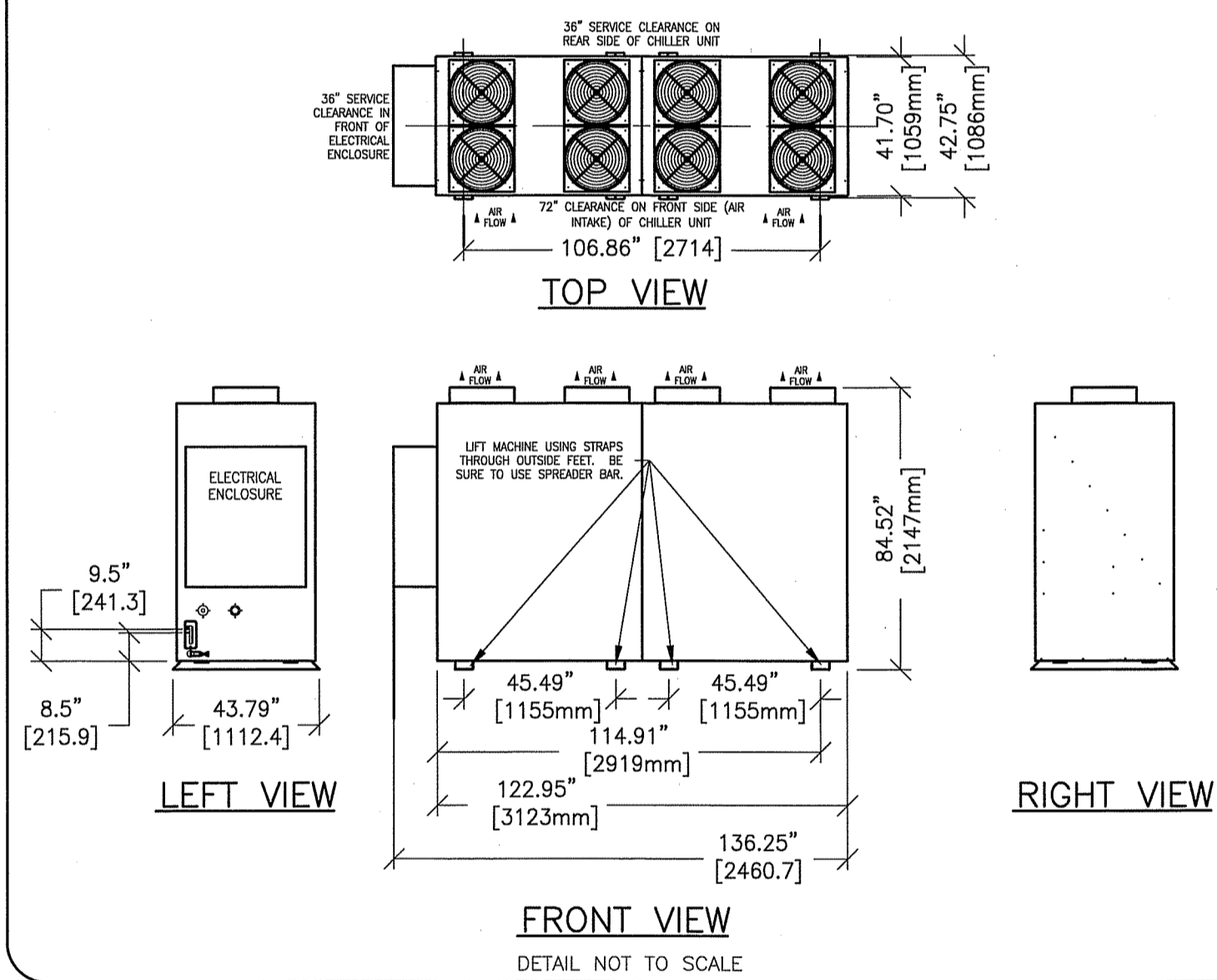
EQUIPMENT DETAIL
150 KVA MAINTENANCE BYPASS PANEL

E45-04CH
REV. DATE: 01/28/03



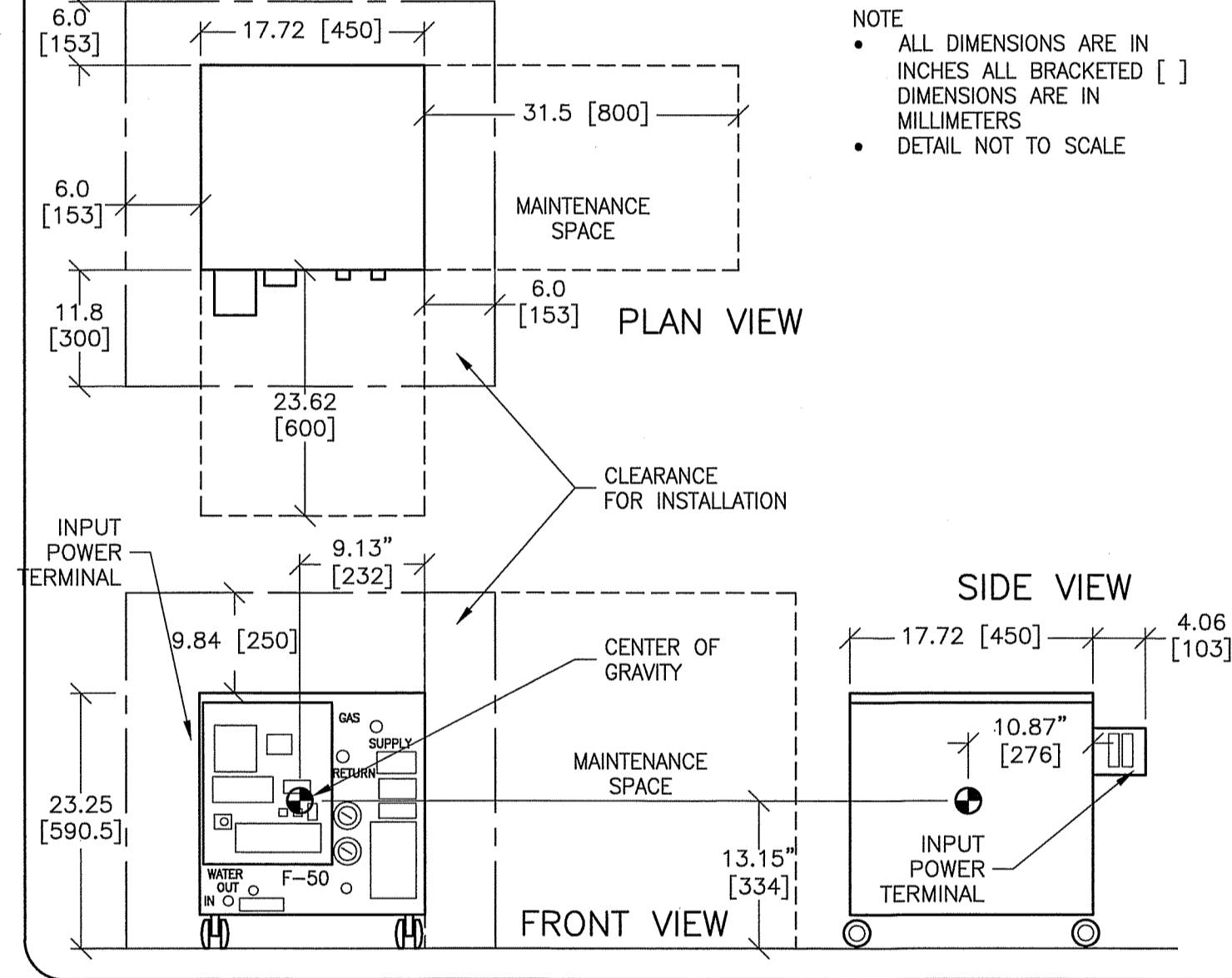
EQUIPMENT DETAIL
DIMPLEX 7500 CHILLER

M03-00F
REV. DATE: 06/18/10



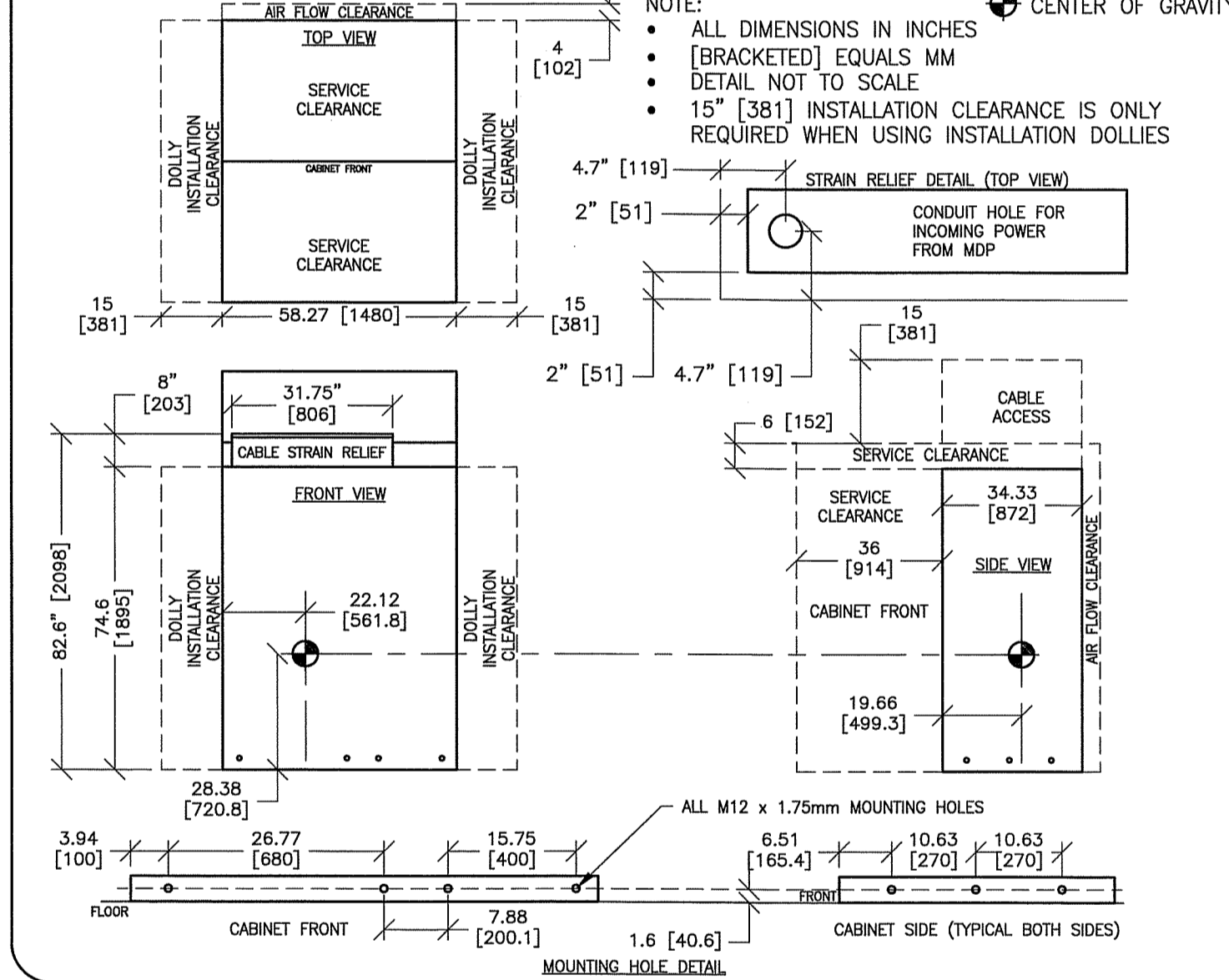
EQUIPMENT DETAIL
CRYOCOOLER COMPRESSOR F50

M33004
REV. DATE: 20 JUN.12



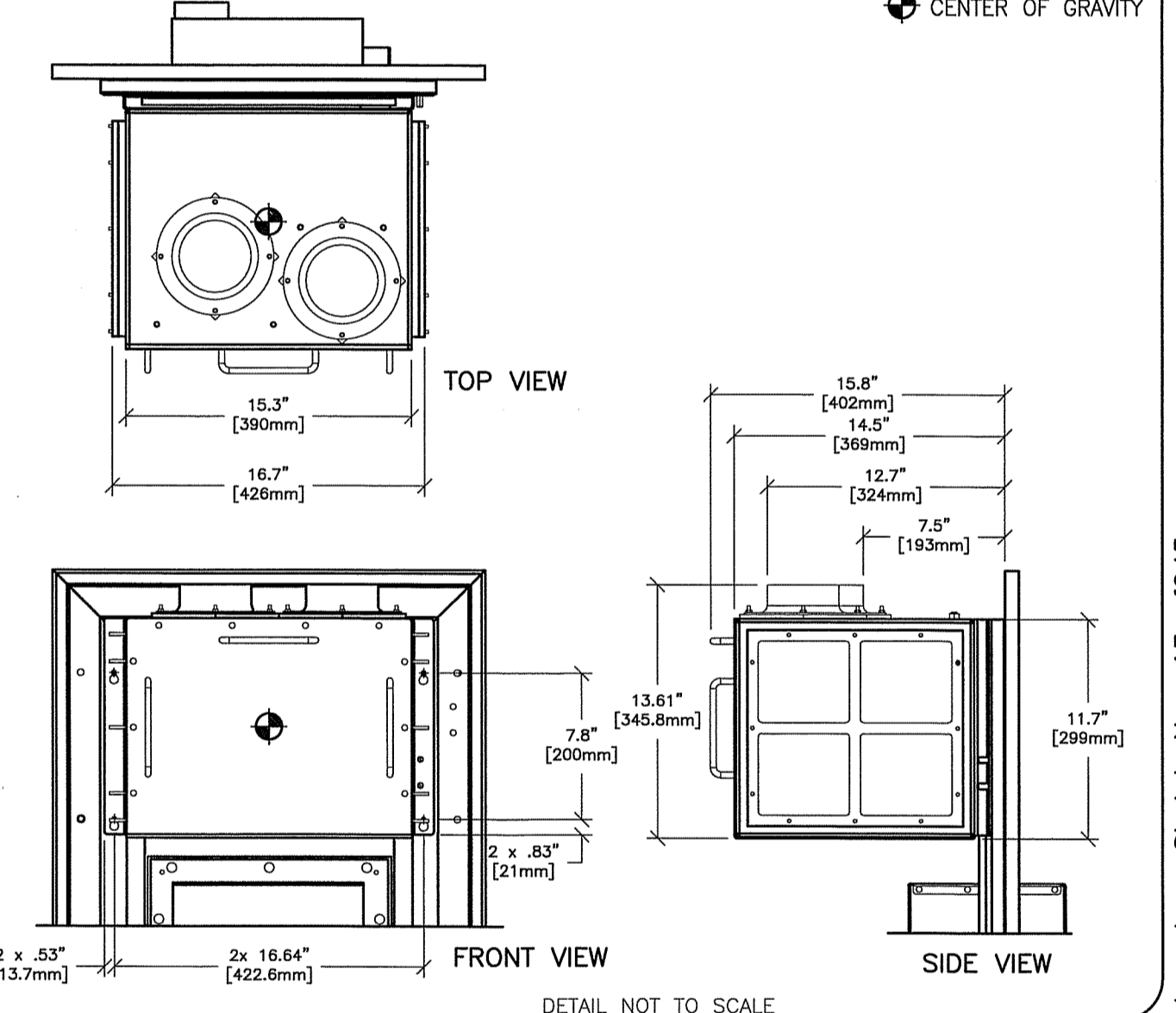
EQUIPMENT DETAIL
POWER ELECTRONICS CABINET

M30-15G
REV. DATE: 06 JUN.12



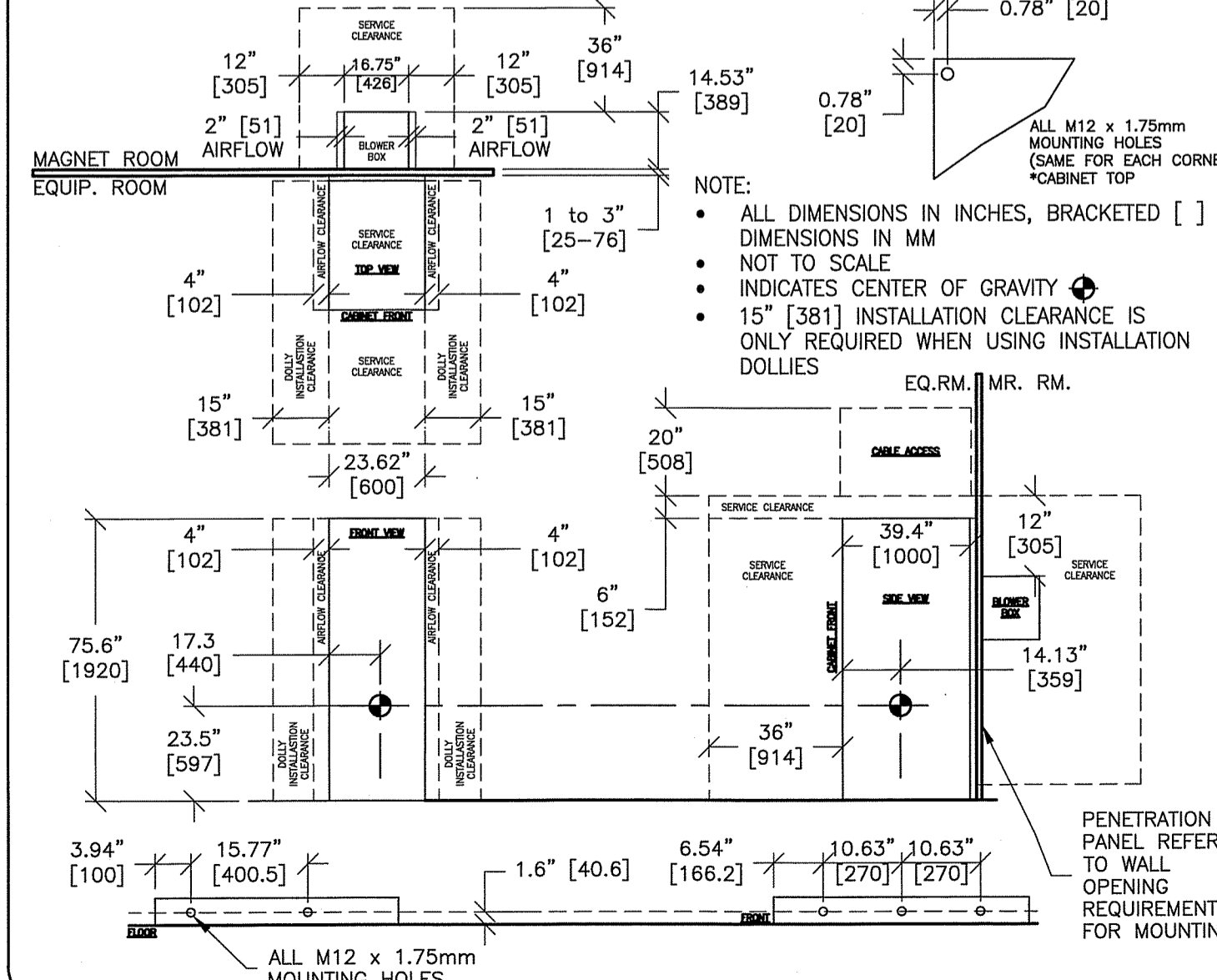
EQUIPMENT DETAIL
BLOWER BOX

M30-15J
REV. DATE: 02/20/09



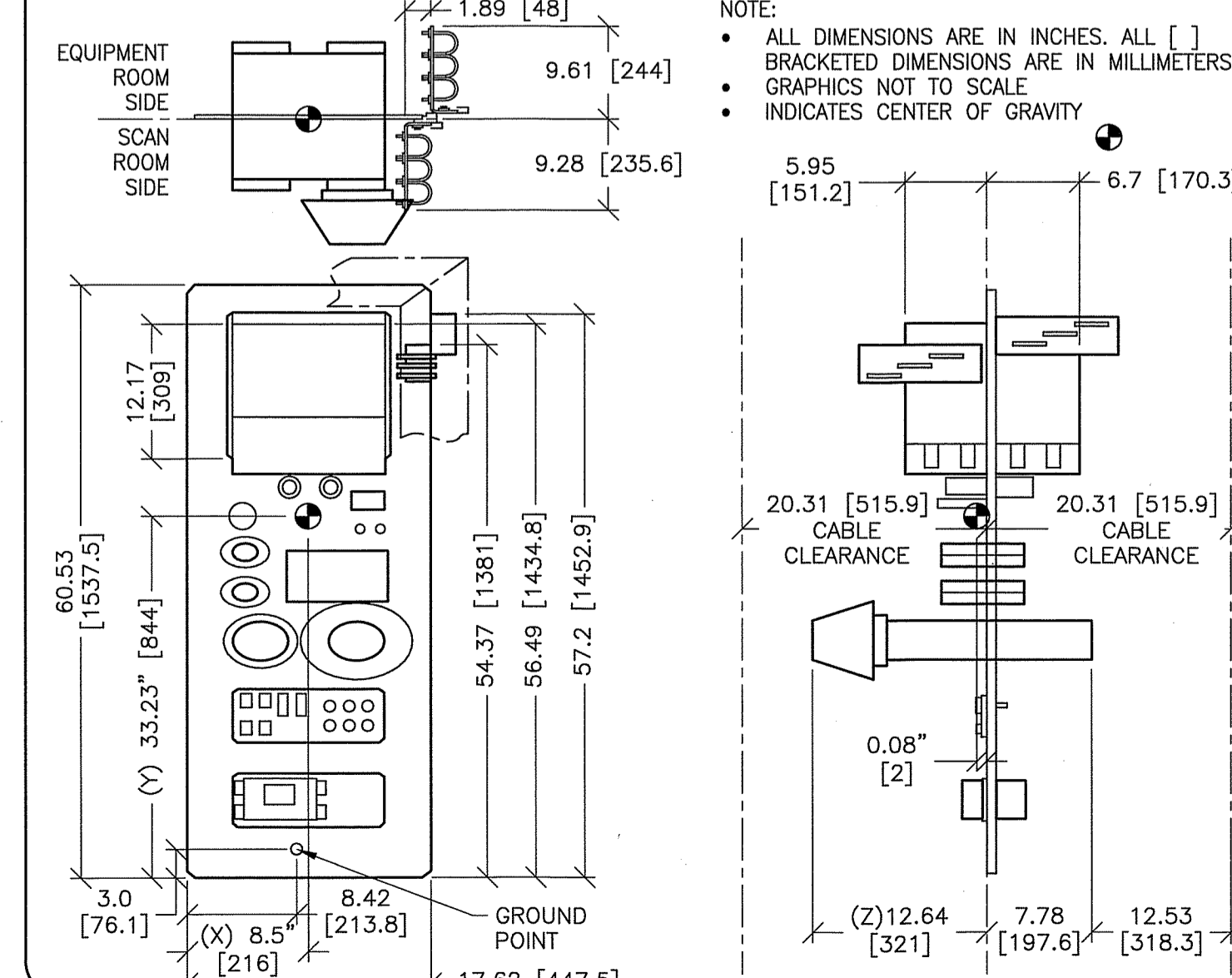
EQUIPMENT DETAIL
PENETRATION PANEL

M30-15F
REV. DATE: 06 JUN.12



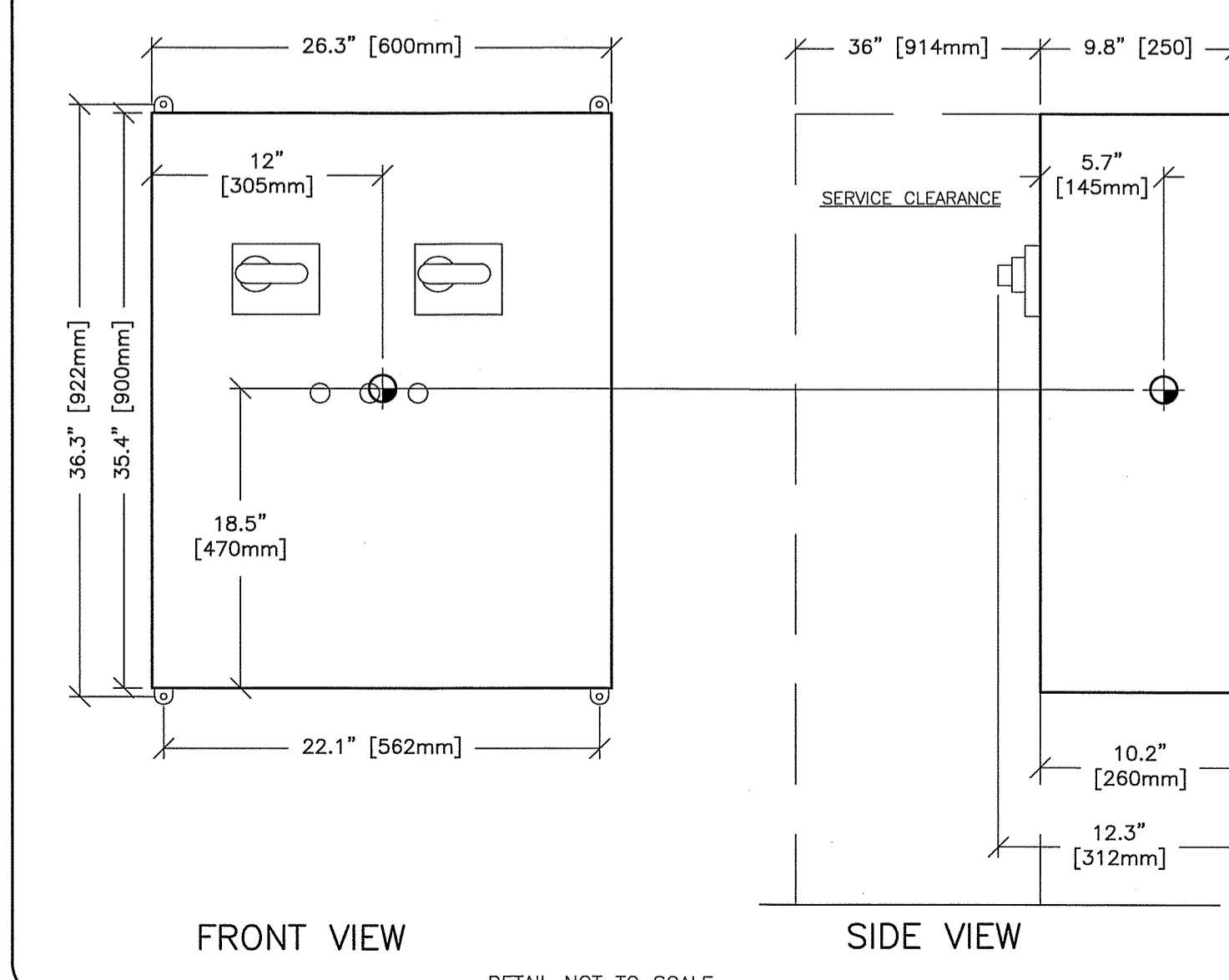
EQUIPMENT DETAIL
SECONDARY PENETRATION WALL (SPW)

M30-15P
REV. DATE: 06 JUN.12



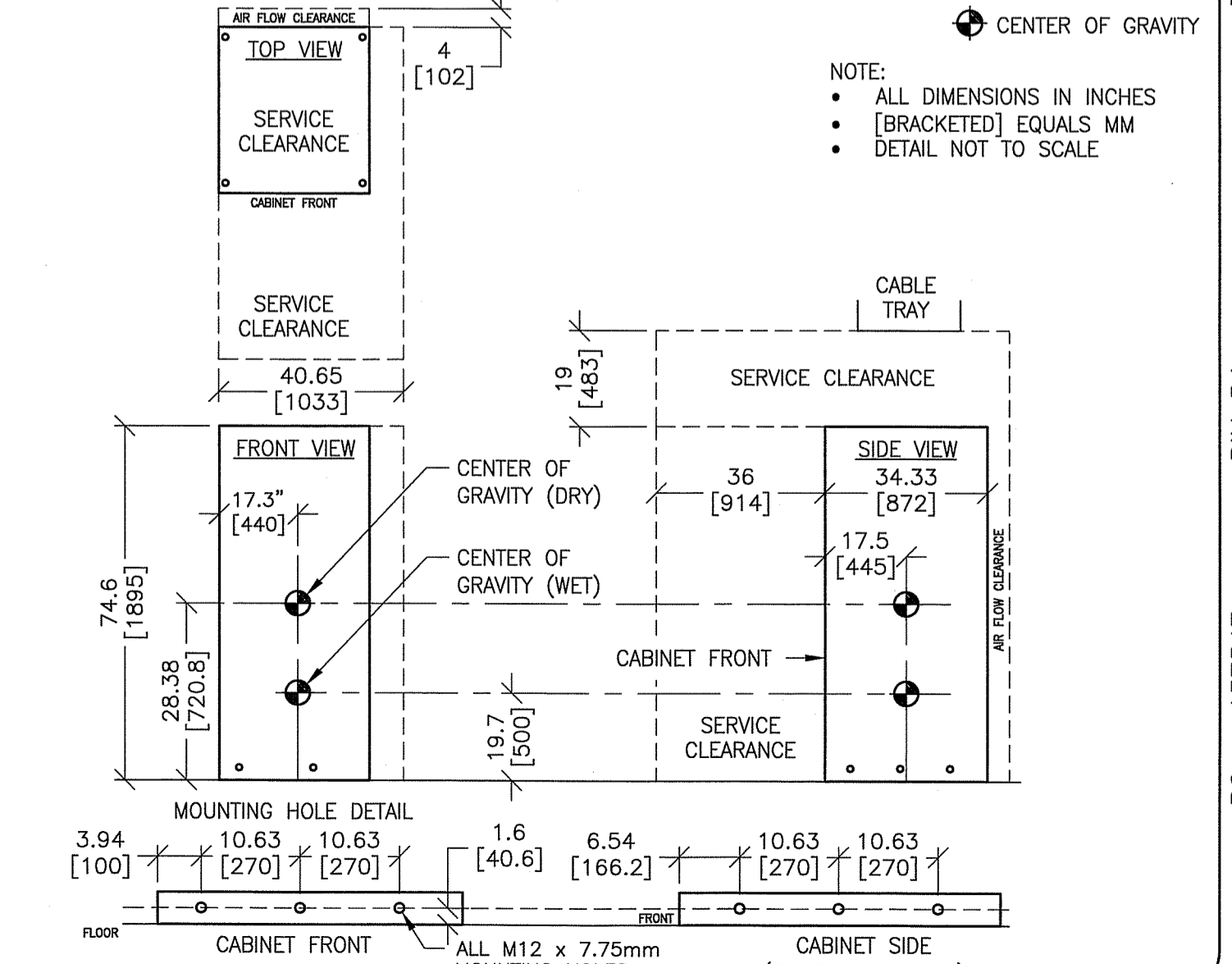
EQUIPMENT DETAIL
MAIN DISCONNECT

M17-15E
REV. DATE: 26 JUN.12



EQUIPMENT DETAIL
HEAT EXCHANGER CABINET

M30-15B
REV. DATE: 06 JUN.12



GE Healthcare
Healthcare Project Implementation - Design Center
Milwaukee, Wisconsin

SHEET TITLE: EQUIPMENT DETAILS
MODALITY TYPE: DISCOVERY MR 750w GEM

THIS PLAN IS SUBMITTED TO SUGGEST LOCATION OF GE HEALTHCARE EQUIPMENT. GE HEALTHCARE EQUIPMENT IS NOT TO BE INSTALLED OR OPERATED WITHOUT THE PRESENCE OF A GE HEALTHCARE PROJECT IMPLEMENTATION DESIGN CENTER REPRESENTATIVE. THE COMPANY CANNOT BE HELD RESPONSIBLE FOR ANY DAMAGES RESULTING THEREFROM.

PROJECT TITLE: MAINE MEDICAL CENTER
PORTLAND, MAINE

This drawing is based on Sketch No.: 131ne045

PROJECT	REVISION
132054	01
DATE:	02 Jul. 13
DRAWN BY:	MCK
CHECKED BY:	JGA
GON NO.:	4108424
GON DT.:	27 Jun. 13

REVISION HISTORY:
1 KMR - 26 Aug. 13
CHECKED BY: PIM

SHEET
D1

PIM R4
RQ - 137547