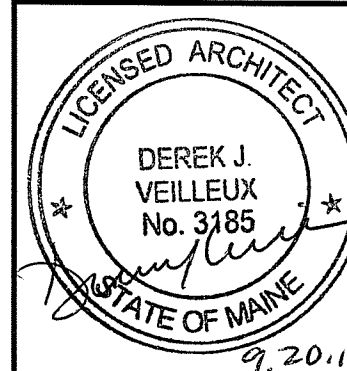
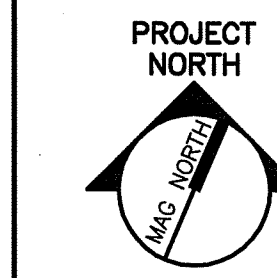
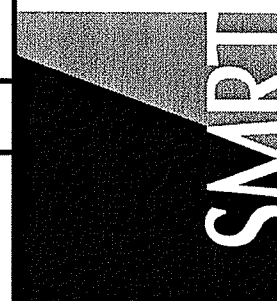


ELEVATION NOTES:

1. PROVIDE NON-FERROUS HARDWARE AT ALL MRI ROOM CASEWORK
- 2.

144 Fore Street/P.O. Box 618
Portland, Maine 04104
tel. (207) 772-3846
fax. (207) 772-1070
www.smrtdc.com

ARCHITECTURE
ENGINEERING
PLANNING
INTERIOR DESIGN
COMMISSIONING

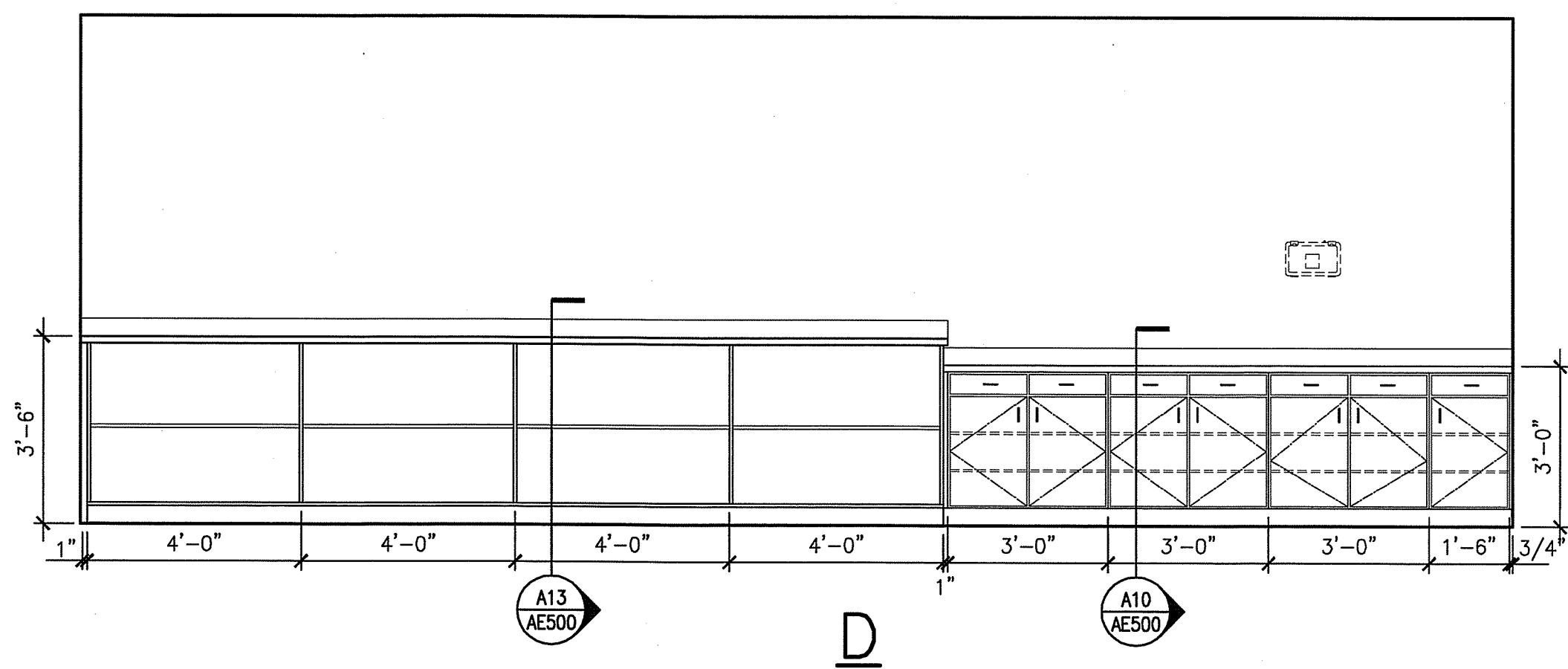
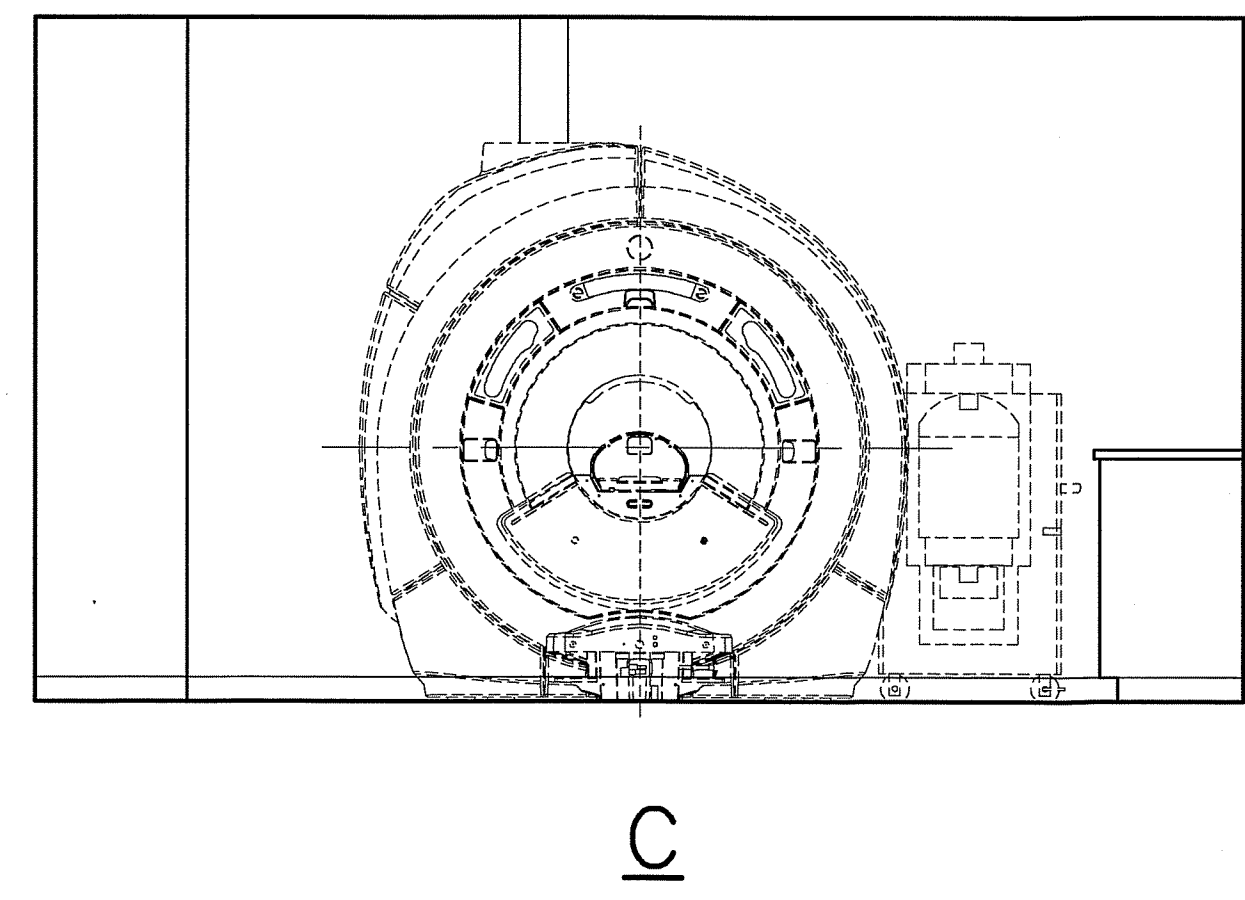
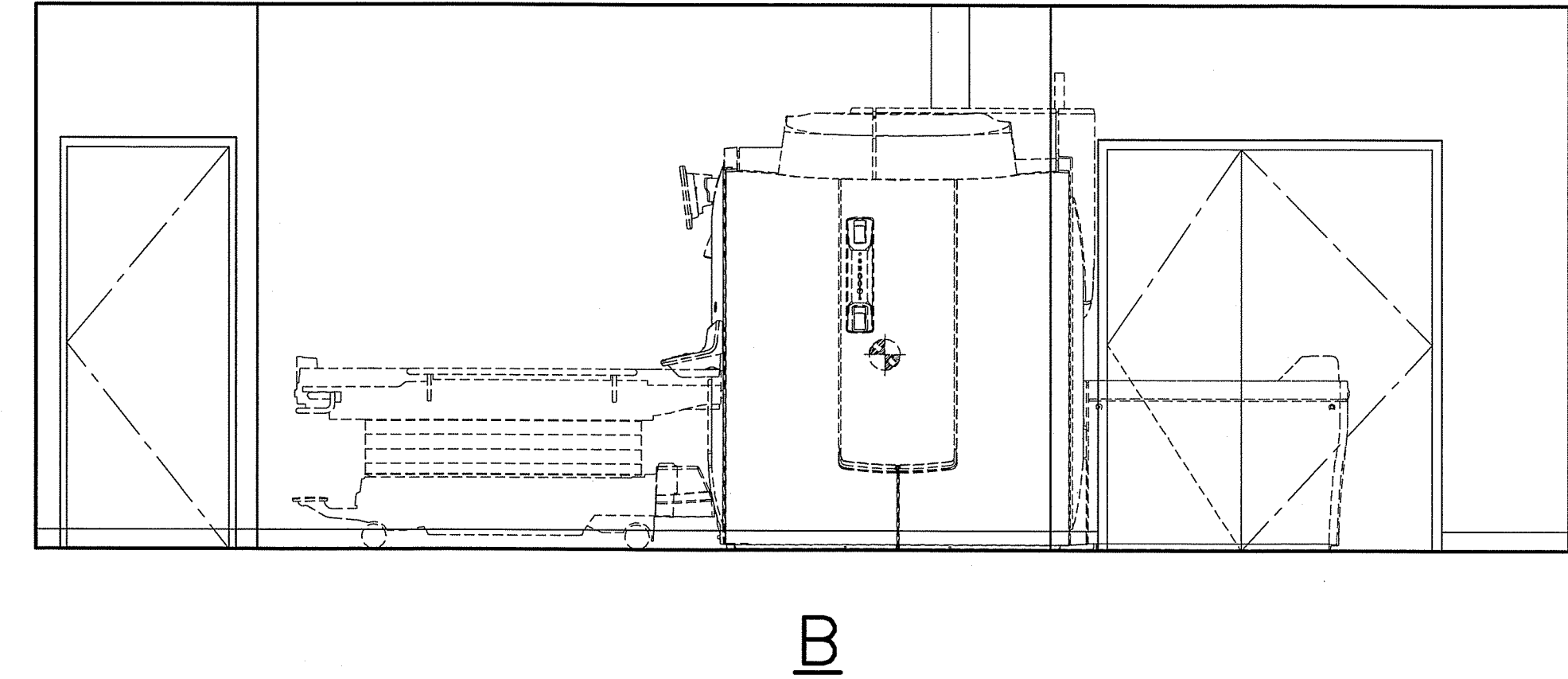
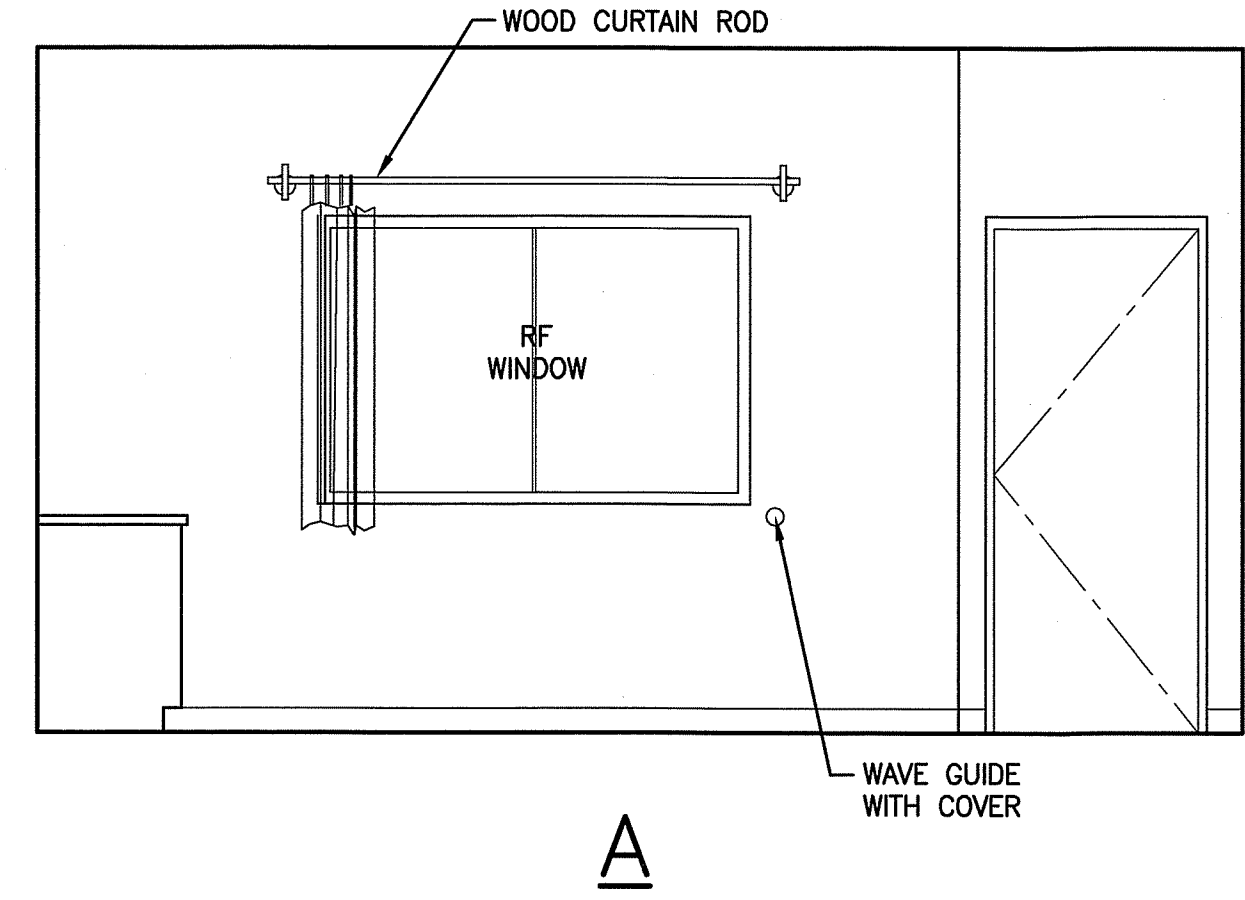


MAINE MEDICAL CENTER
MRI #1 AND READING ROOM RENOVATION
PORTLAND, MAINE

ISSUED FOR CONSTRUCTION
9-20-13

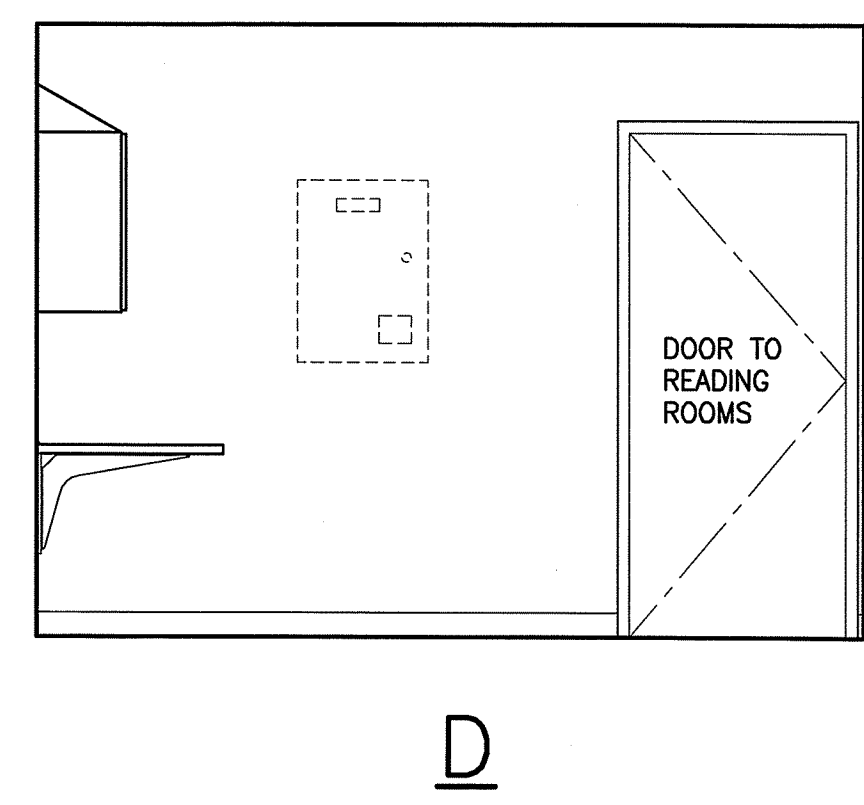
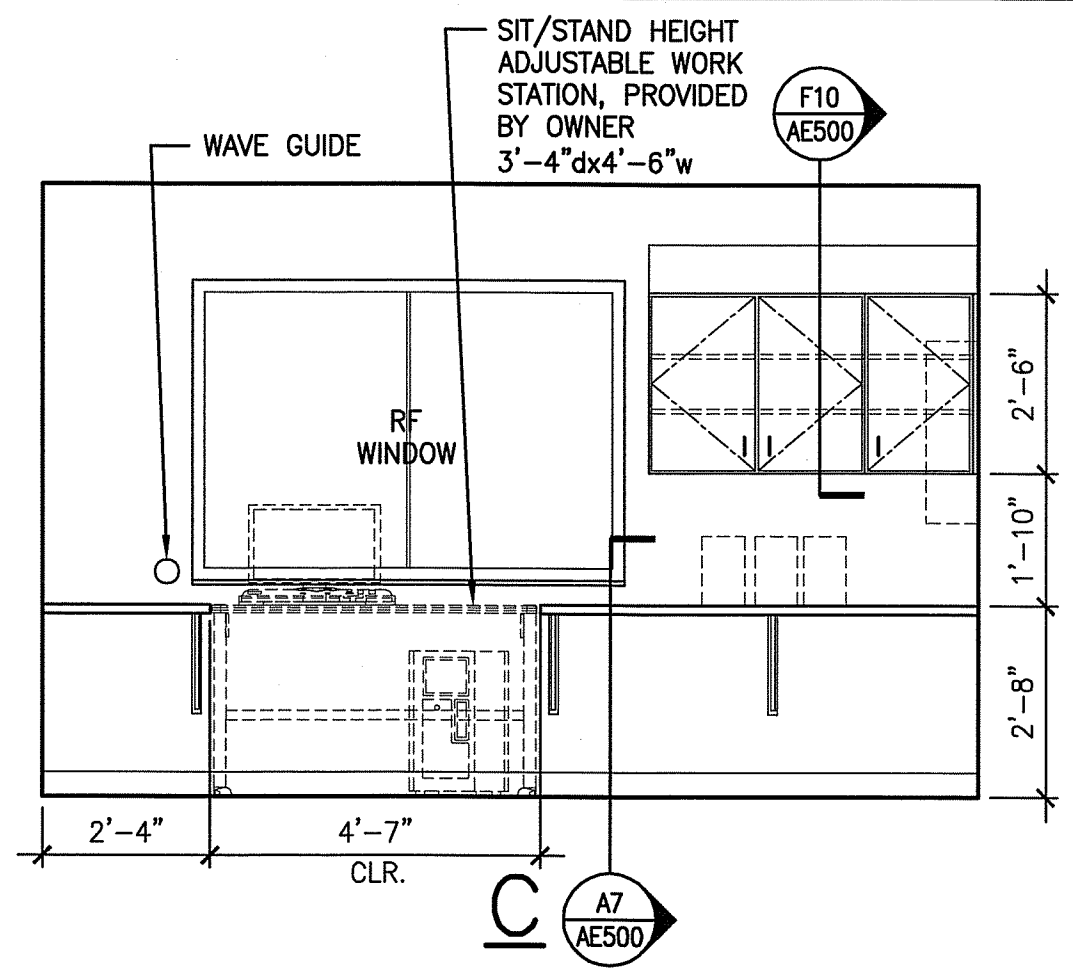
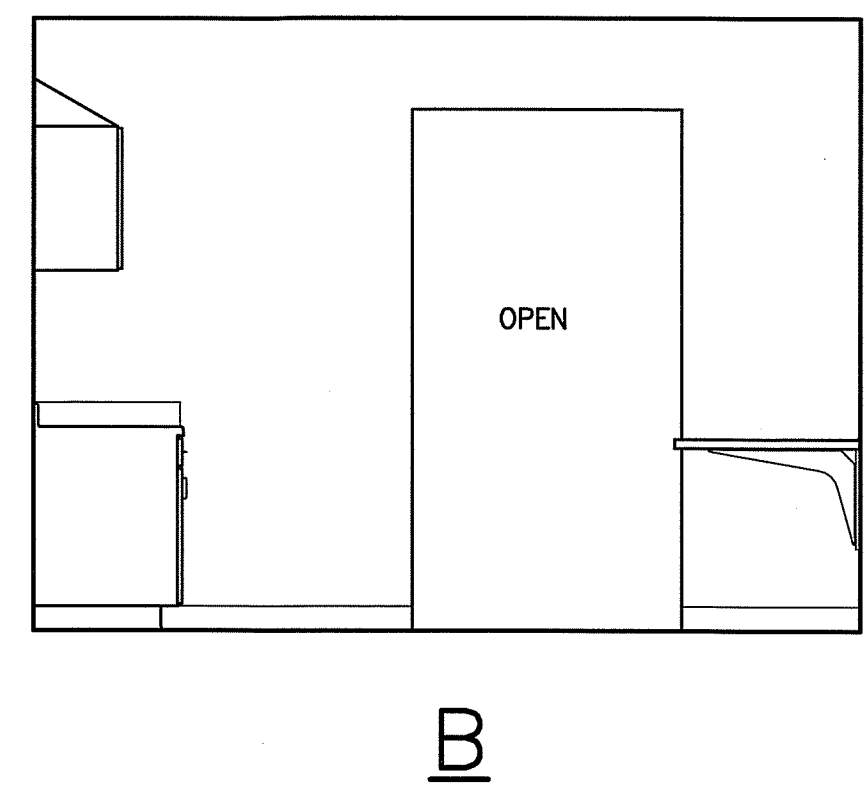
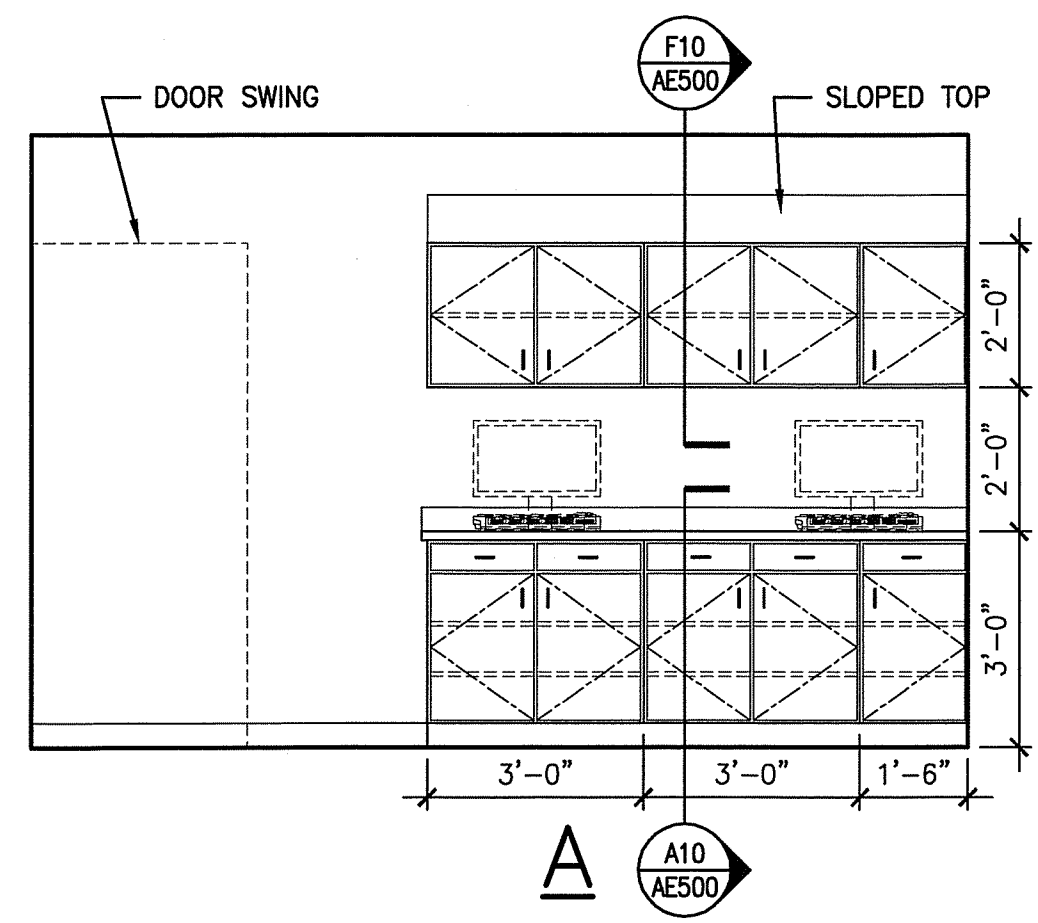
CURRENT ISSUE STATUS:

*
*



D1
3/8"=1'-0"

MRI, #B576
*



A1
3/8"=1'-0"

CONTROL ROOM, #B577
*

REV	DESCRIPTION	DATE
0	ISSUED FOR CONSTRUCTION	9-20-13

GRAPHIC SCALE:
0" 1"

SCALE: 1/4"=1'-0"
PROJECT MANAGER: DJV
LIC/DRAWN BY: MDR
A/E OF RECORD: DJV
CAD FILE: AE210-12118
PROJECT NO: 12118
DATE: 9-20-13

SHEET TITLE:
INTERIOR ELEVATIONS

SHEET No.
AE210
© COPYRIGHT 2013 SMRT INC.