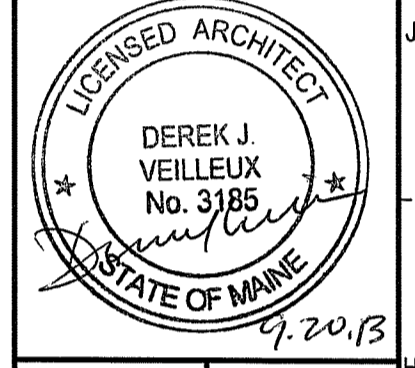
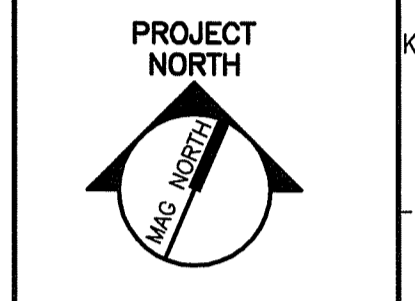


144 Fore Street/P.O. Box 618
 Portland, Maine 04104
 tel. (207) 772-3846
 fax. (207) 772-1070
 www.samtinc.com

ARCHITECTURE
 ENGINEERING
 PLANNING
 INTERIOR DESIGN
 COMMISSIONING

SMART



MAINE MEDICAL CENTER
 MRI #1 AND READING ROOM RENOVATION
 PORTLAND, MAINE

ISSUED FOR CONSTRUCTION
 9-20-13

CURRENT ISSUE STATUS:

REV	DESCRIPTION	DATE
0	ISSUED FOR CONSTRUCTION	9-20-13

GRAPHIC SCALE:
 0" 1"

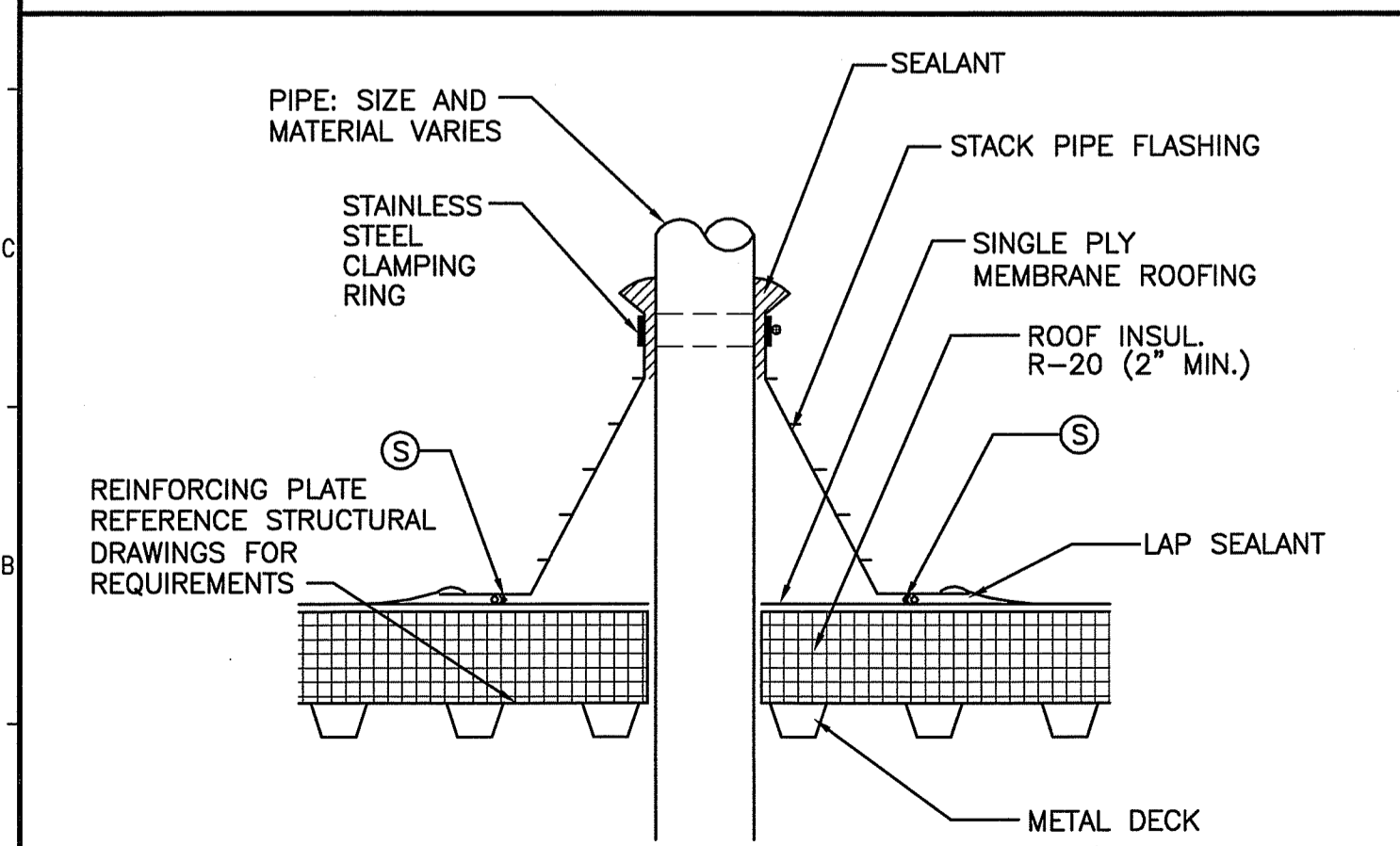
SCALE: AS NOTED

PROJECT MANAGER: D.V
 JC/DRAWN BY: MDR
 A/E OF RECORD: D.V
 CAD FILE: AE100-12118
 PROJECT NO: 12118
 DATE: 9-20-13

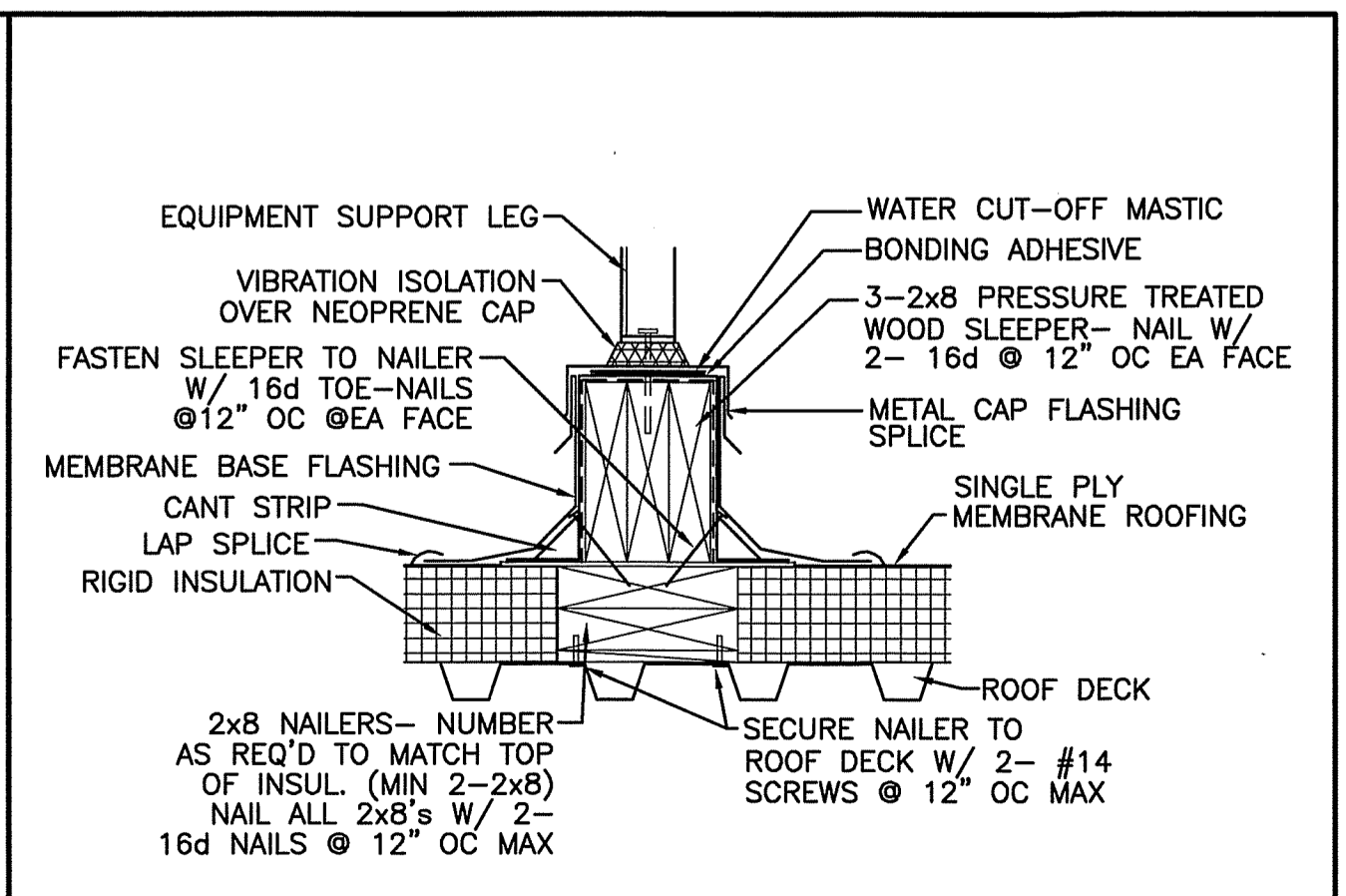
SHEET TITLE:
ROOF PLAN AND PARTIAL SITE PLAN

SHEET No.
AE120

© COPYRIGHT 2013 SMART INC.



A1 PIPE PENETRATION
 1-1/2"=1'-0"



A5 EQUIPMENT SLEEPER DETAIL
 1-1/2"=1'-0"



A8 ROOF/SITE PLAN
 1/8"=1'-0"

- PLAN NOTES:**
- SEE GENERAL NOTES ON G1002.
 - SEE AE100 FOR FLOOR PLAN NOTES.
- KEYED NOTES:**
- REMOVE EXISTING ROOF AND STRUCTURE FOR DEINSTALLATION AND INSTALLATION OF MRI EQUIPMENT. UPON COMPLETION PROVIDE NEW STRUCTURE ACROSS OPENING AND INSTALL NEW ROOF MEMBRANE.
 - EXISTING CRYOGEN VENT THAT SERVES MRI #1
 - REMOVE EXISTING EQUIPMENT CURB, PATCH ROOF TO MATCH EXISTING ADJACENT MATERIALS AND SLOPE.
 - PROVIDE EQUIPMENT CURB, SEE DETAIL A5/AE120