


ECA. NO. 114128
 REV. DATE 06/08/11
 REV. NO. 4 DWG. NO. 136824-348
 CAD DWG
 DRAWN DATE 08-02-10
 DRAWN BY JKD
 CHECKED BY DH

TABLE OF CONTENTS



SHEET	CONTENTS
1	TABLE OF CONTENTS
2/3	GENERAL NOTES
4	MAXIMUM CONFIGURATION FOR CONTROL
5	CONTROL PANEL DISPLAY
6	RECESS MOUNTED WALL CONTROL CENTER
7	SURFACE MOUNTED WALL CONTROL CENTER
8	REMOTE PANEL CONTROL WALL MOUNTING INFORMATION
9	REMOTE PANEL CONTROL CONDUIT LOCATIONS
10	vLED REMOTE PANEL CABLES AND CONDUIT REQUIREMENTS
11	CONDUIT REQUIREMENTS
12	FIELD AC WIRING CONNECTION DETAILS
13	SECONDARY HUB AND EXTENSION CABLE
14	CONTROL WIRING SCHEMATIC W/O AUTOCAL
15	CONTROL WIRING SCHEMATIC W/AUTOCAL

ALL DIMENSIONS ARE IN INCHES ALSO REFER TO GENERAL NOTES APPLICABLE TO EQUIPMENT DRAWINGS	STERIS  STERIS Corporation Mentor, OH	REMOTE PANEL EQUIPMENT DWG., vLED SURGICAL LIGHTING CONTROL SYSTEM		EQUIPMENT DRAWING NO. 136824-348	SHT 1 OF 16
		ITEM _____ LOCATION(S) _____		_____ _____	

ECA. NO. 114128
 REV. DATE. 06/08/11
 DWG. NO. 136824-348
 CAD DWG
 REV. NO. 4
 CHECKED BY DH
 DRAWN BY JKD
 DATE 08-02-10

GENERAL NOTES:

1. vLED REMOTE PANEL CONTROLS CONSIST OF A WALL CONTROL AND A REMOTE CONTROL PANEL.
2. WALL CONTROL KEYPAD ROUGH-IN BOX ASSEMBLY SUPPLIED BY STERIS.
3. RECOMMENDED HEIGHT OF ROUGH-IN BOX 60" MIN. ABOVE FINISHED FLOOR TO COMPLY WITH NFPA REQUIREMENTS FOR FLAMMABLE ANESTHETICS. CONTROL BOX MAY BE MOUNTED BELOW 60" IF NO FLAMMABLE ANESTHETICS ARE UTILIZED.
4. OPENING IN WALL FOR THE WALL CONTROL ROUGH-IN BOX ASSEMBLY MUST BE 5 1/4"H X 7 1/4"W X 3 1/2" DEPTH.
"LC/vLED" ROUGH-IN BOX IS NOT THE SAME BOX AS PRIOR STERIS/AMSCO LIGHTING SYSTEMS"
5. IF REPLACING AN SQ240 OR OTHER LIGHTING SYSTEM, THE EXISTING ROUGH-IN BOX ASSEMBLY MAY POSSIBLY BE USED. A RETROFIT KIT IS REQUIRED TO ACCOMMODATE REPLACEMENT OF EXISTING SYSTEMS. 4" UTILITY BOX FROM ROUGH-IN BOX ASSEMBLY WILL NOT BE USED. NOTE: SOME EXISTING ROUGH-IN BOXES MAY NOT BE LARGE ENOUGH TO ACCOMMODATE THE RETROFIT KIT.
6. WALL CONTROL KEYPAD MOUNTING OPTION:
 A). FOR RECESS MOUNTED CONTROL: SEE PAGE 6 OF 15
 B). FOR SURFACE MOUNTED CONTROL: SEE PAGE 7 OF 15
7. ROUGH-IN BOX ASSEMBLY MUST BE SECURELY MOUNTED ON WALL KEYPAD.
8. PULL THE PRE-LABELED 35'-OR-65' CONTROL CABLE THROUGH WALL CONDUIT, 3/4" MINIMUM, PRIOR TO INSTALLING CONTROLS.
9. THE PULL BOX MUST BE LOCATED WITHIN A CONDUIT RUN NO MORE THAN 60" FROM THE CEILING SPINDLE FOR COMMUNICATIONS AND POWER.
10. THE PANEL MAY BE LOCATED NEAR THE CEILING WITHIN 6" OF THE FALSE CEILING AND A MINIMUM OF 60" FROM FLOOR TO BOTTOM OF PANEL. ALL CONDUIT ENTERS AT THE TOP OF THE PANEL. ALL CONDUIT POINTS ARE PRE-PUNCHED FOR THE SPECIFIC CONDUIT.
11. A COSMETIC COVER MAY BE ADDED BY THE INSTALLER TO COVER THE CONDUIT BETWEEN THE TOP OF THE PANEL AND THE CEILING.
12. THE COMMUNICATIONS CONVERSION MODULES ARE INSTALLED ON THE CEILING PLATE - UP TO 3 MODULES WITH CONNECTIONS TO BOTH THE DC POWER FROM THE LIGHTHEAD AND THE COMMUNICATION SIGNAL.
13. A PULL BOX IS REQUIRED FOR EACH CONDUIT TO THE REMOTE CONTROL BOX AND LOCATED LESS THEN 6' FROM REMOTE PANEL CONTROL.
14. EQUIPMENT MUST BE INSTALLED PER NATIONAL AND LOCAL CODES.
15. CEILING ACCESS PANEL HIGHLY RECOMMENDED, AND LOCATED WITHIN ARMS REACH OF THE CANOPY LOCATION FOR SERVICE TO THE CEILING PANEL.
16. STERIS ASSUMES NO RESPONSIBILITY FOR CHANGES MADE NECESSARY THROUGH FAILURE TO OBSERVE THESE INSTRUCTIONS.


ALL DIMENSIONS ARE IN INCHES ALSO REFER TO GENERAL NOTES APPLICABLE TO EQUIPMENT DRAWINGS	REMOTE PANEL EQUIPMENT DWG., vLED SURGICAL LIGHTING CONTROL SYSTEM	EQUIPMENT DRAWING NO. 136824-348
	STERIS Corporation Mentor, OH	SHT 2 OF 16 ITEM _____ LOCATION(S) _____

ECA. NO. 114128
 REV. DATE. 06/08/11
 DWG. NO. 136824-348
 DRAWN BY JKD
 CHECKED BY DH
 DRAWN DATE 08-02-10

CAD DWG

GENERAL NOTES: (continued)

17. FOR RECOMMENDED CONDUIT AND WIRE LENGTHS REFER TO HARMONY LC/vLED CABLES, AND HARMONY CONDUIT REQUIREMENTS CHARTS ON PAGES #10 & #11.
18. SEPARATE PULL BOXES (NOT SUPPLIED BY STERIS) MUST BE MOUNTED WITHIN 24" OF CEILING STRUCTURE FOR ALL CONDUIT RUNS. SEPARATE PULL BOX IS REQUIRED FOR DC CONNECTIONS FOR BACK-UP POWER REQUIREMENTS.
19. ALL AC WIRING MUST BE ENCLOSED W/FLEX CONDUIT FROM PULL BOX TO CANOPY CONDUIT 3/4" FLEX CONDUIT.
20. MAXIMUM AMBIENT TEMPERATURE FOR EXTERIOR OF REMOTE PANEL CONTROL IS 40°C (104°F).
21. RECOMMENDED INSTALLATION FOR RPC WALL PANEL: USE TWO PIECES OF HORIZONTAL UNISTRUT TO ANCHOR ACROSS (3) STUDS. MOUNT RPC WITH (4) 1/4" BOLTS USING LARGE FLAT WASHER & LOCK WASHER FOR EACH BOLT. FASTENERS AND HORIZONTAL UNISTRUT NOT SUPPLIED BY STERIS.

ALL DIMENSIONS ARE IN INCHES ALSO REFER TO GENERAL NOTES APPLICABLE TO EQUIPMENT DRAWINGS		REMOTE PANEL EQUIPMENT DWG., vLED SURGICAL LIGHTING CONTROL SYSTEM	EQUIPMENT DRAWING NO. 136824-348	
 STERIS Corporation Mentor, OH			SHT 3 OF 16 ITEM _____ LOCATION(S) _____	

ECA. NO. 114128
 REV. DATE 06/08/11
 REV. NO. 4
 DWG. NO. 136824-348
 DRAWN BY JKD
 CHECKED BY DH
 DRAWN DATE 08-02-10
 CAD DWG

MAXIMUM CONFIGURATION PER CONTROL CENTER

HARMONY vLED COMPONENT	MAXIMUM NUMBER	COMMENTS
LIGHTHEADS	3	LOWEST HUNG LIGHT W/VIDEO ONLY
OPTIONAL CAMERA MODULE	1	ONLY IN LIGHTHEAD #1
HUBS (SPINDLES)	3	1 PRIMARY, 2 OPTIONAL SECONDARY, * SEE NOTE #3
VIDEO MONITORS	N/A	CRT AND FLAT PANEL MONITORS ARE NOT CONTROLLED BY THE CONTROL CENTER.
OPTIONAL ORCS/ACT INPUT	1	RS 232 - CONNECTION IN THE REMOTE PANEL CONTROLS ACCESSED THROUGH THE COMMUNICATION CONDUIT
REMOTE PANEL CONTROL	1	1 PRIMARY
WALL CONTROL PANEL	1	SELECT FROM TWO CONFIGURATIONS, SEE PAGE #5.

MAXIMUM CONFIGURATION NOTES.

1. REFER TO MECHANICAL EQUIPMENT DRAWINGS FOR MOUNTING REQUIREMENTS OF COMPONENTS.
2. REFER TO FOLLOWING EQUIPMENT DRAWINGS FOR THE CEILING HEIGHT & ARM CONFIGURATION, CEILING PLATE DETAIL, & ONDAL CEILING STRUCTURE:

 REQUIRED INFORMATION IS PULLED FROM LIGHT SYSTEM SOFTWARE "CONFIGURATOR" PROGRAM
3. SECOND OR THIRD HUB (SPINDLE) ARE DESIGNATED AS NON-CAMERA "ONLY". PRIMARY HUB CONTAINS ALL POWERS SUPPLIES. PRIMARY HUB (SPINDLE) CONTAINS MASTER CONTROL BOARD PN#136824-088 & VIDEO BOARD PN#146670-011. CAMERA MODULE ALWAYS RESIDES AT THE PRIMARY HUB.
4. ACT CABLE SUPPLIED BY OTHER TO ACT CTRL PORT IN REMOTE PANEL CONTROL.
5. FOR SINGLE HUB SYSTEMS WITH MULTIPLE LIGHTHEADS, THERE WILL BE TWO CANOPY CONTROL MODULES. SEE PAGE #10 FOR DETAILS. SECOND HUB IN DUAL HUB SYSTEM ONLY CONTAINS NO POWER SUPPLIES OR MODULES.
6. REFER TO STERIS SURGICAL LIGHTING SYSTEM SERVICE DISCONNECT KIT INSTALLATION INSTRUCTIONS (DOC# 129388-228) FOR INFORMATION ON INSTALLATION OF THE OPTIONAL SERVICE DISCONNECT SWITCH.
7. FOR VENTED CEILING, LEAVE A MINIMUM GAP OF 1/4 INCH BETWEEN THE CEILING PLATE AND THE FINISHED CEILING.

ALL DIMENSIONS ARE IN INCHES

ALSO REFER TO GENERAL NOTES APPLICABLE TO EQUIPMENT DRAWINGS



STERIS Corporation
Mentor, OH

REMOTE PANEL EQUIPMENT
DWG., vLED SURGICAL
LIGHTING CONTROL SYSTEM

EQUIPMENT DRAWING NO.

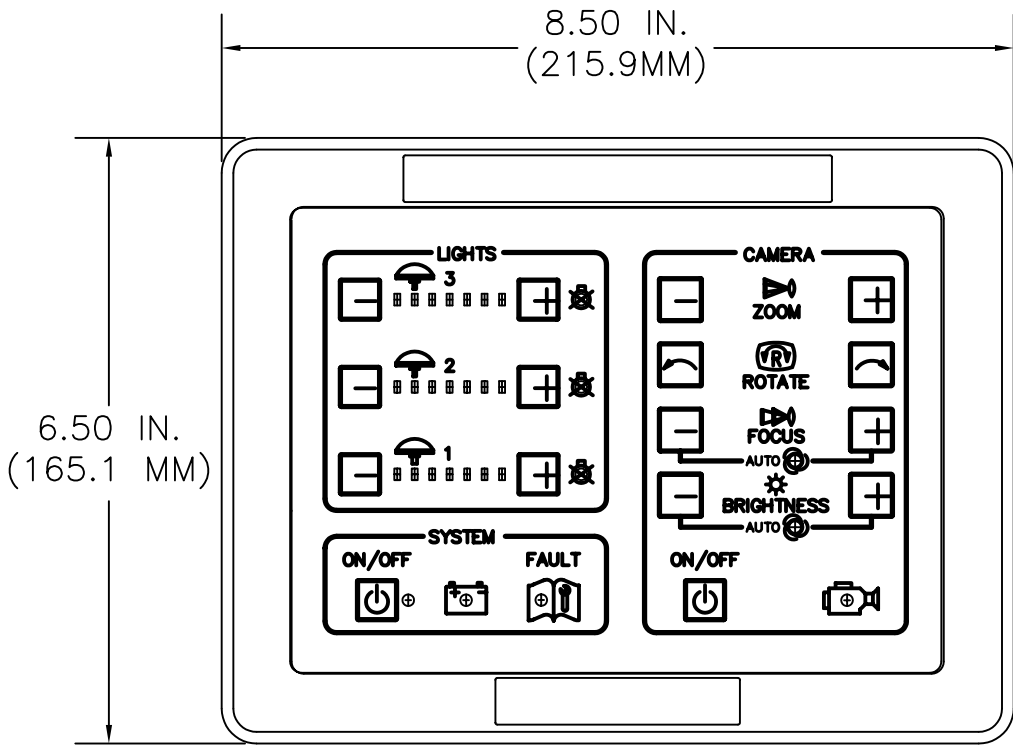
136824-348 | SHT 4 OF 16

ITEM _____

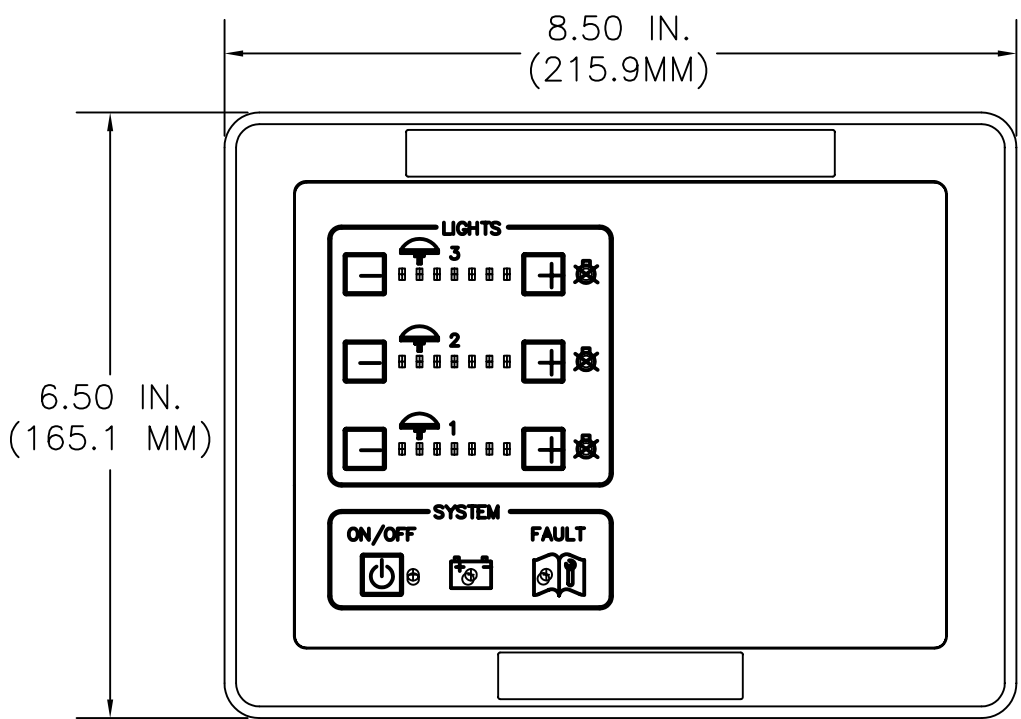
LOCATION(S) _____

ECA. NO. 114128
 REV. DATE. 06/08/11
 DWG. NO. 136824-348
 REV. NO. 4
 DRAWN BY JKD
 CHECKED BY DH
 DRAWN DATE 08-02-10

CAD DWG



WALL CONTROL PANEL WITH CAMERA



WALL CONTROL PANEL W/O CAMERA

ALL DIMENSIONS ARE IN INCHES

ALSO REFER TO GENERAL NOTES
 APPLICABLE TO EQUIPMENT DRAWINGS



STERIS Corporation
 Mentor, OH

REMOTE PANEL EQUIPMENT
 DWG., vLED SURGICAL
 LIGHTING CONTROL SYSTEM

EQUIPMENT DRAWING NO.

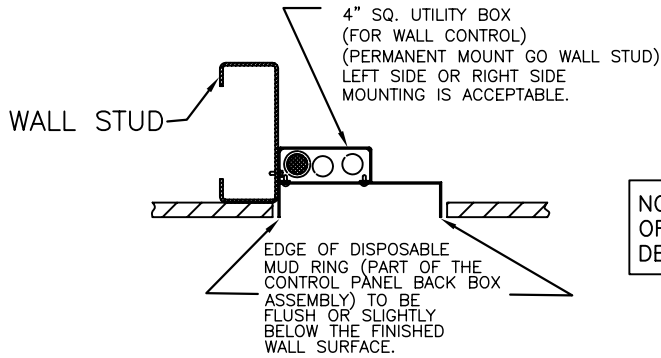
136824-348

SHT 5
 OF 16

ITEM _____
 LOCATION(S) _____

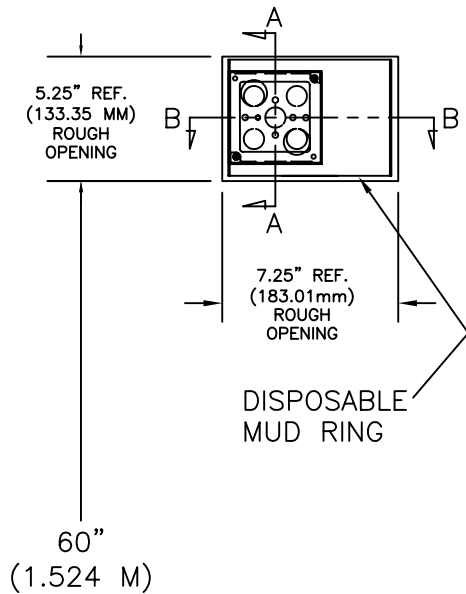
ECA. NO. 114128
 REV. DATE 06/08/11
 REV. NO. 4 DWG. NO. 136824-348
 CAD DWG
 DRAWN BY JKD
 CHECKED BY DH
 DRAWN DATE 08-02-10

RECESS MOUNTED WALL CONTROL

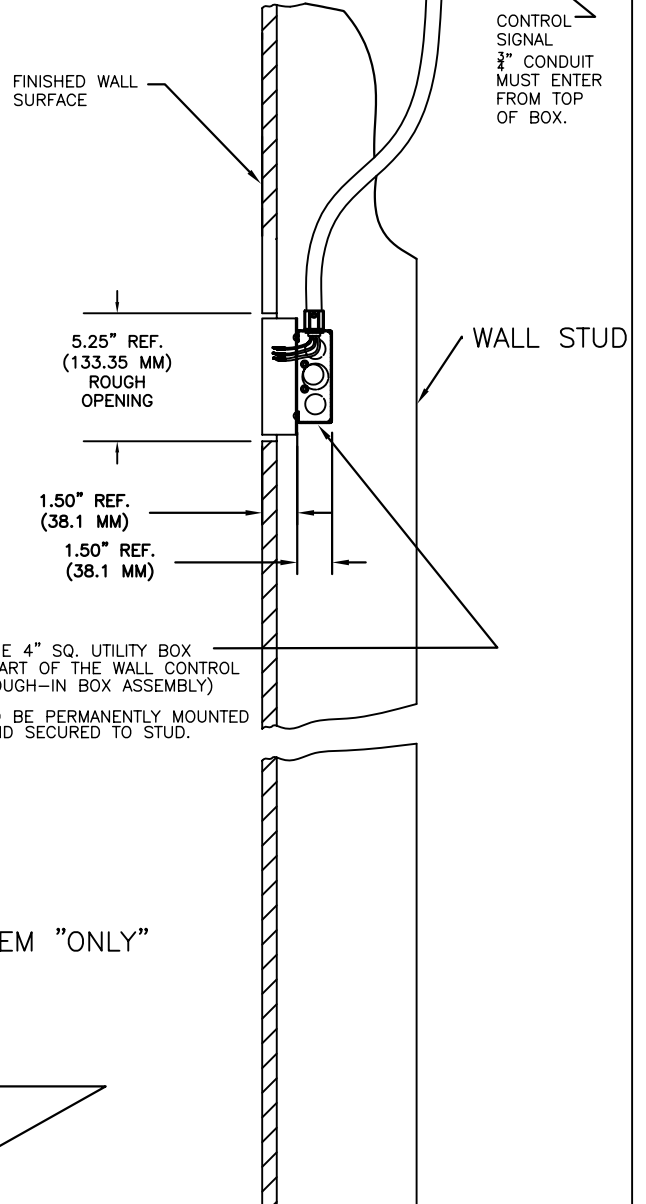
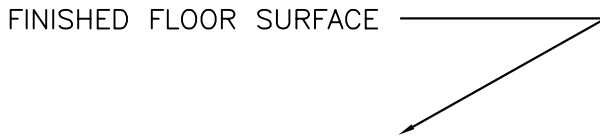


SECTION B-B

NOTE: SEE SHEET 9 FOR DETAILS
 OF CONDUIT LOCATION AND INPUT
 DESCRIPTIONS.



* FOR DC BATTERY BACKUP SYSTEM "ONLY"



SECTION A-A

ALL DIMENSIONS ARE IN INCHES

ALSO REFER TO GENERAL NOTES
 APPLICABLE TO EQUIPMENT DRAWINGS



STERIS Corporation
 Mentor, OH

REMOTE PANEL EQUIPMENT
 DWG., vLED SURGICAL
 LIGHTING CONTROL SYSTEM

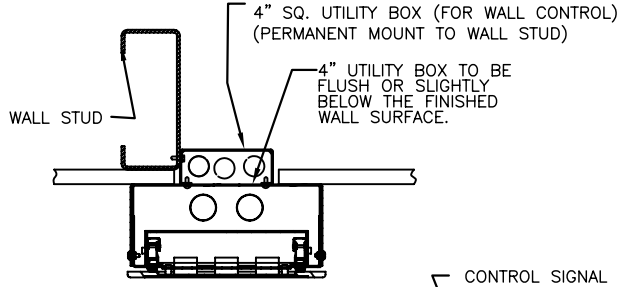
EQUIPMENT DRAWING NO.

136824-348 | SHT 6
 OF 16

ITEM _____

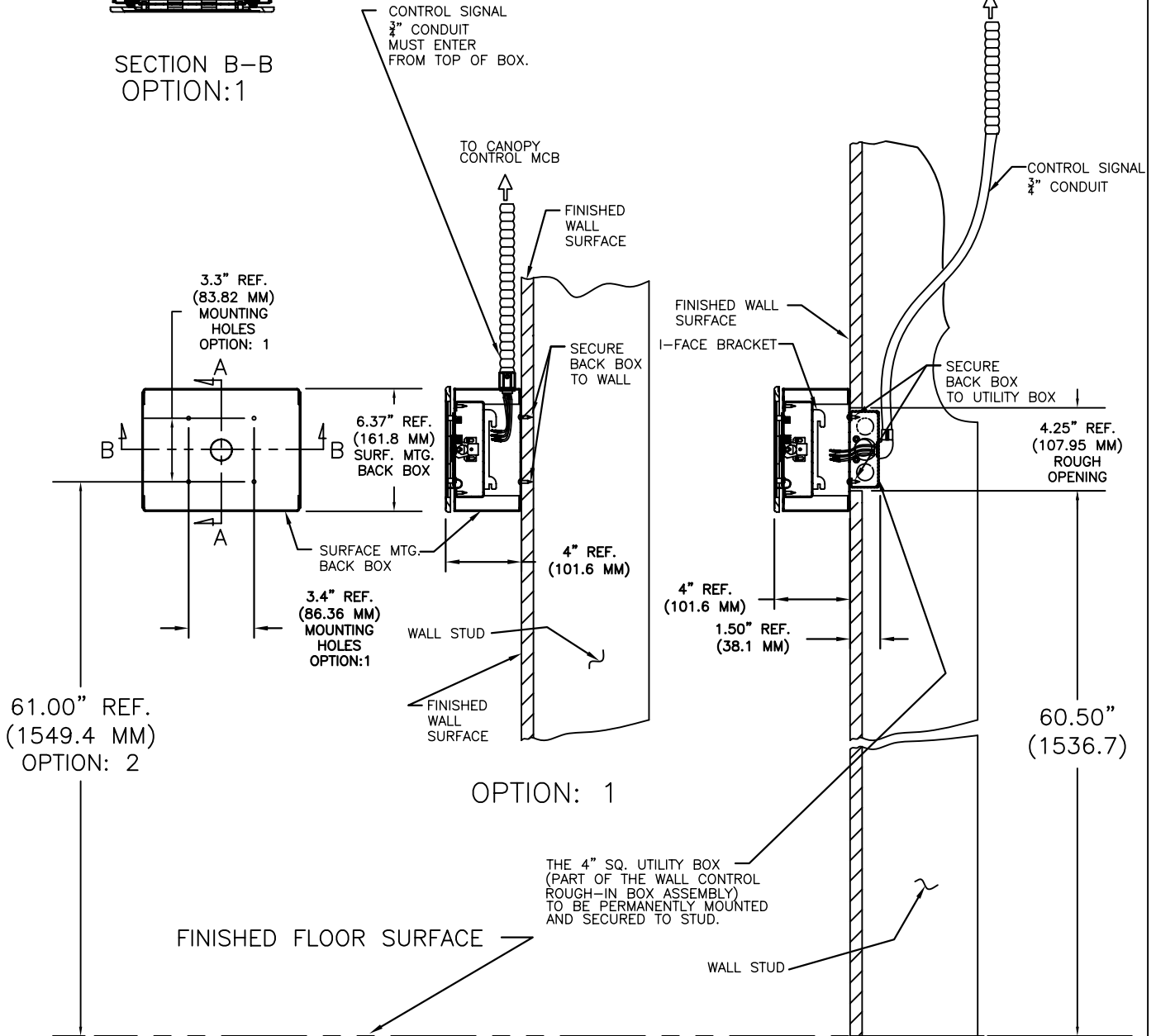
LOCATION(S) _____

SURFACE MOUNTED WALL CONTROL



SECTION B-B
OPTION:1

NOTE: SEE SHEET 9 FOR DETAILS OF CONDUIT LOCATION AND INPUT DESCRIPTIONS.



OPTION: 1

SECTION A-A
OPTION: 2

* FOR DC BATTERY BACKUP SYSTEM "ONLY"

ALL DIMENSIONS ARE IN INCHES

ALSO REFER TO GENERAL NOTES APPLICABLE TO EQUIPMENT DRAWINGS



STERIS Corporation
Mentor, OH

REMOTE PANEL EQUIPMENT DWG., vLED SURGICAL LIGHTING CONTROL SYSTEM

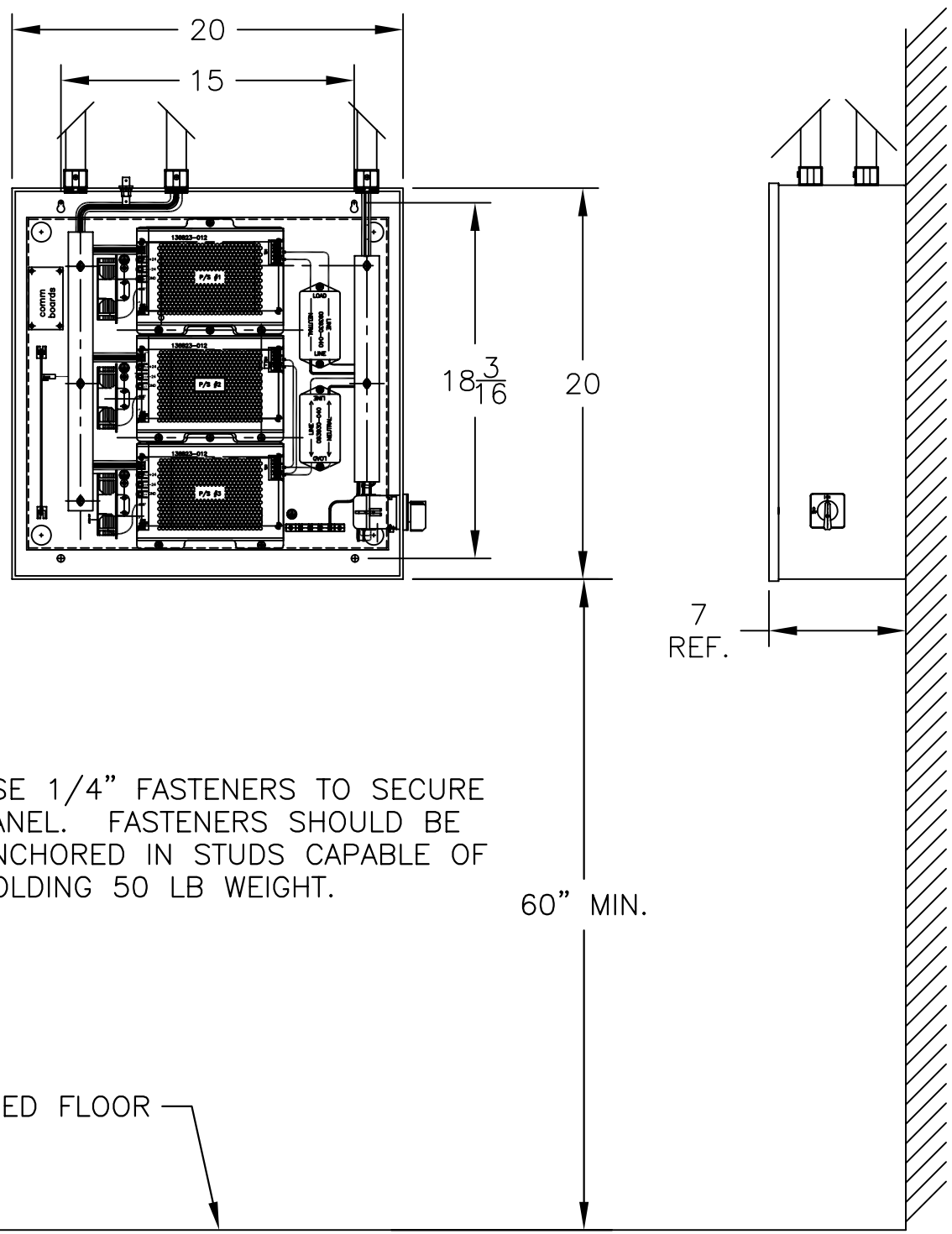
EQUIPMENT DRAWING NO.

136824-348 | SHT 7
OF 16

ITEM _____
LOCATION(S) _____

ECA. NO. 114128
 REV. DATE 06/08/11
 REV. NO. 4 DWG. NO. 136824-348
 DRAWN BY JKD
 CHECKED BY DH
 DRAWN DATE 08-02-10

CAD DWG



USE 1/4" FASTENERS TO SECURE PANEL. FASTENERS SHOULD BE ANCHORED IN STUDS CAPABLE OF HOLDING 50 LB WEIGHT.

60" MIN.

FINISHED FLOOR

NOTE: IMAGE OF REMOTE PANEL CONTROL IS FOR ILLUSTRATION OF MOUNTING HOLE LOCATIONS ONLY. MAY NOT SHOW ACTUAL CONFIGURATION OF CUSTOMER'S SYSTEM.

ALL DIMENSIONS ARE IN INCHES

ALSO REFER TO GENERAL NOTES APPLICABLE TO EQUIPMENT DRAWINGS



STERIS Corporation
 Mentor, OH

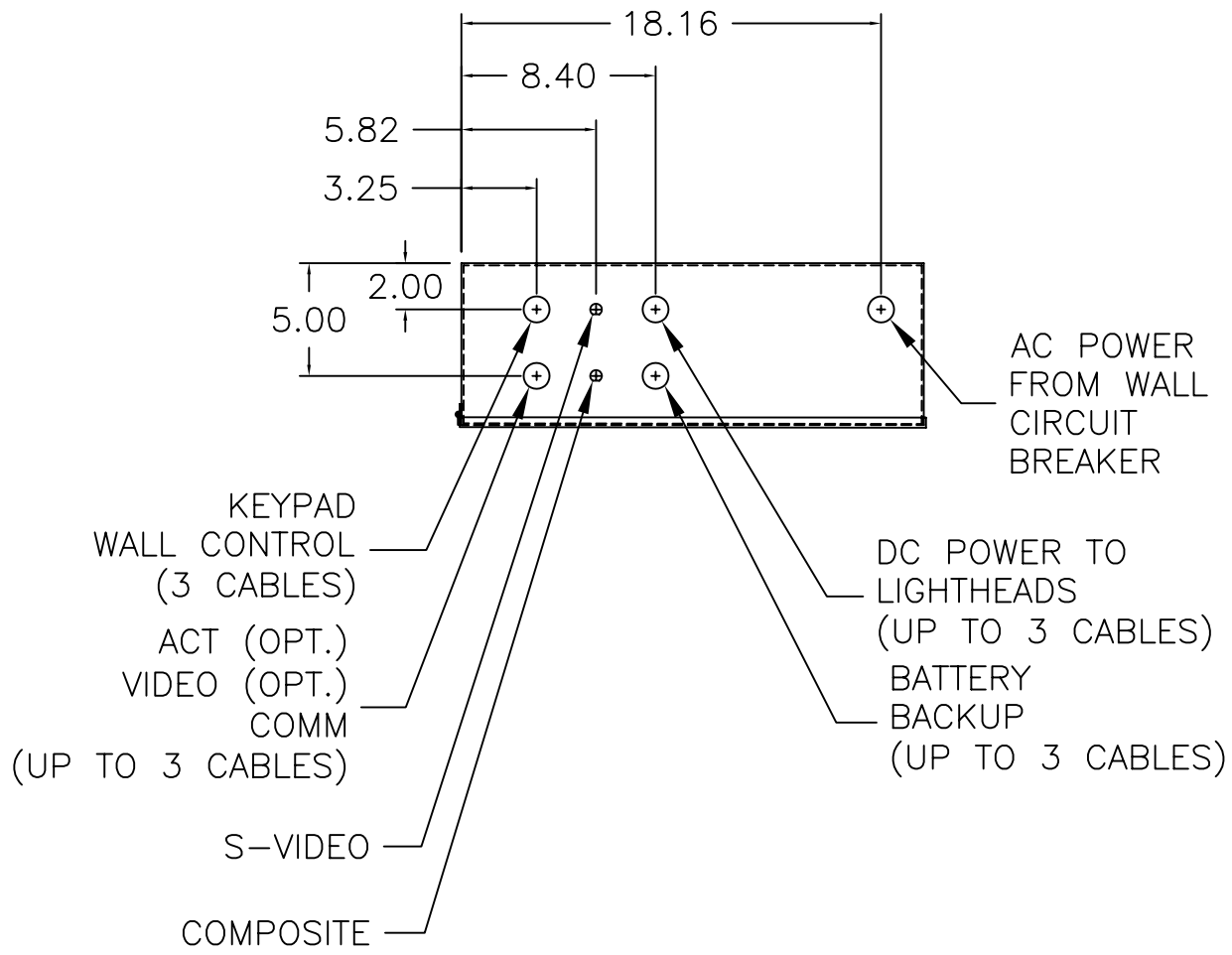
REMOTE PANEL EQUIPMENT
 DWG., vLED SURGICAL
 LIGHTING CONTROL SYSTEM

EQUIPMENT DRAWING NO.	
136824-348	SHT 8 OF 16
ITEM _____	
LOCATION(S) _____	

ECA. NO. 114128
 REV. DATE 06/08/11
 REV. NO. 4 DWG. NO. 136824-348

DRAWN DATE 08-02-10
 DRAWN BY JKD
 CHECKED BY DH

CAD DWG



CONDUIT LOCATIONS AND INPUT DESCRIPTIONS

ALL DIMENSIONS ARE IN INCHES

ALSO REFER TO GENERAL NOTES
 APPLICABLE TO EQUIPMENT DRAWINGS



STERIS Corporation
 Mentor, OH

REMOTE PANEL EQUIPMENT
 DWG., vLED SURGICAL
 LIGHTING CONTROL SYSTEM

EQUIPMENT DRAWING NO.
 136824-348 | SHT 9
 OF 16

ITEM _____
 LOCATION(S) _____


ECA. NO. 114128
 REV. DATE 06/08/11
 REV. NO. 4
 DWG. NO. 136824-348
 CAD DWG
 DRAWN BY JKD
 CHECKED BY DH
 DRAWN DATE 08-02-10

vLED CONTROL CABLES

	PART NUMBER	DESCRIPTION	CONNECTION LOCATION		QUANTITY PER SYSTEM
			FROM	TO	
STANDARD LENGTH NON-PLENUM	093930-032	35' SERVICE CABLE ASS'Y.	REMOTE PANEL CONTROL	WALL CONTROL (KEYPAD)	1
	093930-034	35' PWR/RESET CABLE ASS'Y.	REMOTE PANEL CONTROL	WALL CONTROL (KEYPAD)	1
	093930-036	35' COMM. CABLE ASS'Y.	REMOTE PANEL CONTROL	WALL CONTROL (KEYPAD)	1
	136824-380	35' COMM. CABLE ASS'Y.	REMOTE PANEL CONTROL	CANOPY HUB	1/LH
	136824-349	35' POWER CABLE W/MOLEX CONN.	REMOTE PANEL CONTROL	CANOPY HUB	1/LH
	136824-386	36' COMM/VIDEO CABLE	REMOTE PANEL CONTROL	LIGHTHEAD W/CAMERA	1/LH
OPTIONAL LENGTH NON-PLENUM	093930-031	65' SERVICE CABLE ASS'Y.	REMOTE PANEL CONTROL	WALL CONTROL (KEYPAD)	1
	093930-033	65' PWR/RESET CABLE ASS'Y.	REMOTE PANEL CONTROL	WALL CONTROL (KEYPAD)	1
	093930-035	65' COMM. CABLE ASS'Y.	REMOTE PANEL CONTROL	WALL CONTROL (KEYPAD)	1
	136824-381	65' COMM. CABLE ASS'Y.	REMOTE PANEL CONTROL	CANOPY HUB	1/LH
	136824-350	65' POWER CABLE W/MOLEX CONN.	REMOTE PANEL CONTROL	CANOPY HUB	1/LH
	136824-387	66' COMM/VIDEO CABLE	REMOTE PANEL CONTROL	LIGHTHEAD W/CAMERA	1/LH
OPTIONAL LENGTH PLENUM	093930-046	65' SERVICE CABLE ASS'Y.	REMOTE PANEL CONTROL	WALL CONTROL (KEYPAD)	1
	093930-047	65' PWR/RESET CABLE ASS'Y.	REMOTE PANEL CONTROL	WALL CONTROL (KEYPAD)	1
	093930-048	65' COMM. CABLE ASS'Y.	REMOTE PANEL CONTROL	WALL CONTROL (KEYPAD)	1
	136824-382	65' COMM. CABLE ASS'Y.	REMOTE PANEL CONTROL	CANOPY HUB	1/LH
	136824-231	65' POWER CABLE W/MOLEX CONN.	REMOTE PANEL CONTROL	CANOPY HUB	1/LH
	136824-388	66' COMM/VIDEO CABLE	REMOTE PANEL CONTROL	LIGHTHEAD W/CAMERA	1/LH

CONDUIT REQUIREMENTS NOTES

1. RUN DC POWER AND COMM CONDUIT TO EACH HUB FROM REMOTE PANEL CONTROL BOX. CONDUIT SUPPLIED BY OTHERS.
2. INCOMING AC WIRE/CONDUIT FOR THE REMOTE PANEL CONTROL SUPPLIED BY OTHERS. SITE AC POWER IS: 5A-2A @ 100-240 VAC.
3. OPTIONAL SITE DC POWER FOR BACKUP OPERATION IS 10A @ 21-28 VDC ±1 VDC / 23-31 VDC (OPTIONAL) PER LIGHTHEAD. DC VOLTAGE MEASUREMENTS AT POWER SUPPLY BATTERY BACKUP. SIZE DC WIRE TO MAINTAIN GAUGE. THIS MUST BE CONNECTED TO THE BATTERY BOOST MODULE PIGGYBACKED ON THE POWER SUPPLY (SEPARATE ORDER ITEM).
4. VIDEO OUTPUT FROM THE REMOTE PANEL CONTROL CAN GO DIRECTLY TO SITE SPECIFIC A/V EQUIPMENT, THROUGH THE COMM CONDUIT EXITING AT PULL BOX.
5. ACT CABLE/CONDUIT SUPPLIED BY OTHERS. MAX LENGTH IS 50 FT.
6. POWER RESET, COMM., & SERVICE CABLE CONDUITS SUPPLIED BY OTHERS.
7. BATTERY BACK-UP CABLE/CONDUIT SUPPLIED BY OTHERS.
8. ROUTE CONDUITS FROM PULL BOX(S) AT REMOTE PANEL CONTROL TO SECOND SPINDLE WITH POWER AND COMM CONDUITS FOR REMOTE LIGHTHEAD. THE TOTAL RUN SHOULD NOT EXCEED 65' FROM RPC.

<p>ALL DIMENSIONS ARE IN INCHES</p> <p>ALSO REFER TO GENERAL NOTES APPLICABLE TO EQUIPMENT DRAWINGS</p>  <p>STERIS Corporation Mentor, OH</p>	<p>REMOTE PANEL EQUIPMENT DWG., vLED SURGICAL LIGHTING CONTROL SYSTEM</p>	<p>EQUIPMENT DRAWING NO. 136824-348</p> <p>SHT 10 OF 16</p> <p>ITEM _____</p> <p>LOCATION(S) _____</p>
--	---	--

vLED CONDUIT REQUIREMENTS

CONDUIT		CABLE		CONNECTIONS		NOTES
LABEL	SIZE	MAX. LENGTH STD (LONG RUN)	CABLE DESCRIPTION	FROM	TO	
AC POWER						
AC1	3/4"	SITE DETERMINED	AC POWER FOR REMOTE PANEL CONTROL/FLEX (SOLID CONDUIT TO LAST PULL BOX. FLEX CONDUIT FROM PULL BOX TO REMOTE PANEL CONTROLS.)	SEE SHEET 10 (NOT BY STERIS)	1 PER SYSTEM	SITE AC POWER
						REMOTE PANEL CONTROL

COMMUNICATION/DC POWER/CONTROL

DC1	3/4"	33 FT./63 FT. (10.06 M/19.20 M)	COMM., SERVICE & POWER RESET FOR WALL CTRL	SEE SHEET 10	1 SET PER SYSTEM	WALL CONTROL (KEYPAD)	REMOTE PANEL CONTROL	6
DC2	3/4"	33 FT./63 FT. (10.06 M/19.20 M)	* POWER CONNECTIONS TO SUSPENSION	SEE SHEET 10	1 PER CEILING PLATE N**	REMOTE PANEL CONTROL	CANOPY CEILING PLATE	1
DC3	3/4"	33 FT./65 FT. (10.06 M/19.81 M)	** COMMUNICATION CONNECTIONS TO SUSPENSION	SEE SHEET 10	1 PER CEILING PLATE	REMOTE PANEL	CANOPY CEILING PLATE	1


ACT, VIDEO SIGNALS AND BATTERY BACK UP

C1	3/4"	BY OTHER	ACT COMMUNICATIONS AND VIDEO SIGNALS	SEE SHEET 10 (NOT BY STERIS)	1 PER SYSTEM	REMOTE PANEL CONTROL	ORCS (BY OTHERS)	5
C2	3/4"	BY OTHER	VIDEO OUTPUT	SEE SHEET 10 (NOT BY STERIS)	1 PER SYSTEM	REMOTE PANEL CONTROL	VIDEO INPUT EQUIPMENT (BY OTHERS)	4
C3	3/4"	BY OTHER	BATTERY BACK-UP POWER WITH REMOTE PANEL CONTROL DISCONNECT SWITCH (BY OTHERS). SOLID CONDUIT.	SEE SHEET 10	1 PER SYSTEM	DISCONNECT SWITCH AC IN	SITE AC POWER (BY OTHER)	
			BATTERY BACK-UP POWER WITH REMOTE PANEL CONTROL DISCONNECT SWITCH (BY OTHERS). FLEX CONDUIT.	SEE SHEET 10	1 PER SYSTEM	DISCONNECT SWITCH AC OUT	REMOTE PANEL CONTROL	

- NOTE:
- DC POWER CONDUIT TO A SECOND/THIRD SPINDLE IS DIVIDED AT THE PULL BOX FOR EACH RUN.
 - BATTERY BACKUP REQUIRES THE ADDITION OF BATTERY BOOST MODULES TO IMPLEMENT BATTERY BACKUP FOR vLED.
 - ** SEPARATE CONDUIT(S) WILL BE REQUIRED FOR POWER TO A SECONDARY SPINDLE FROM THE REMOTE PANEL CONTROL TO SECONDARY SPINDLE.

ALL DIMENSIONS ARE IN INCHES

ALSO REFER TO GENERAL NOTES APPLICABLE TO EQUIPMENT DRAWINGS



STERIS Corporation
Mentor, OH

REMOTE PANEL EQUIPMENT
 DWG., vLED SURGICAL
 LIGHTING CONTROL SYSTEM

EQUIPMENT DRAWING NO.
 136824-348

SHT 11
 OF 16

ITEM _____

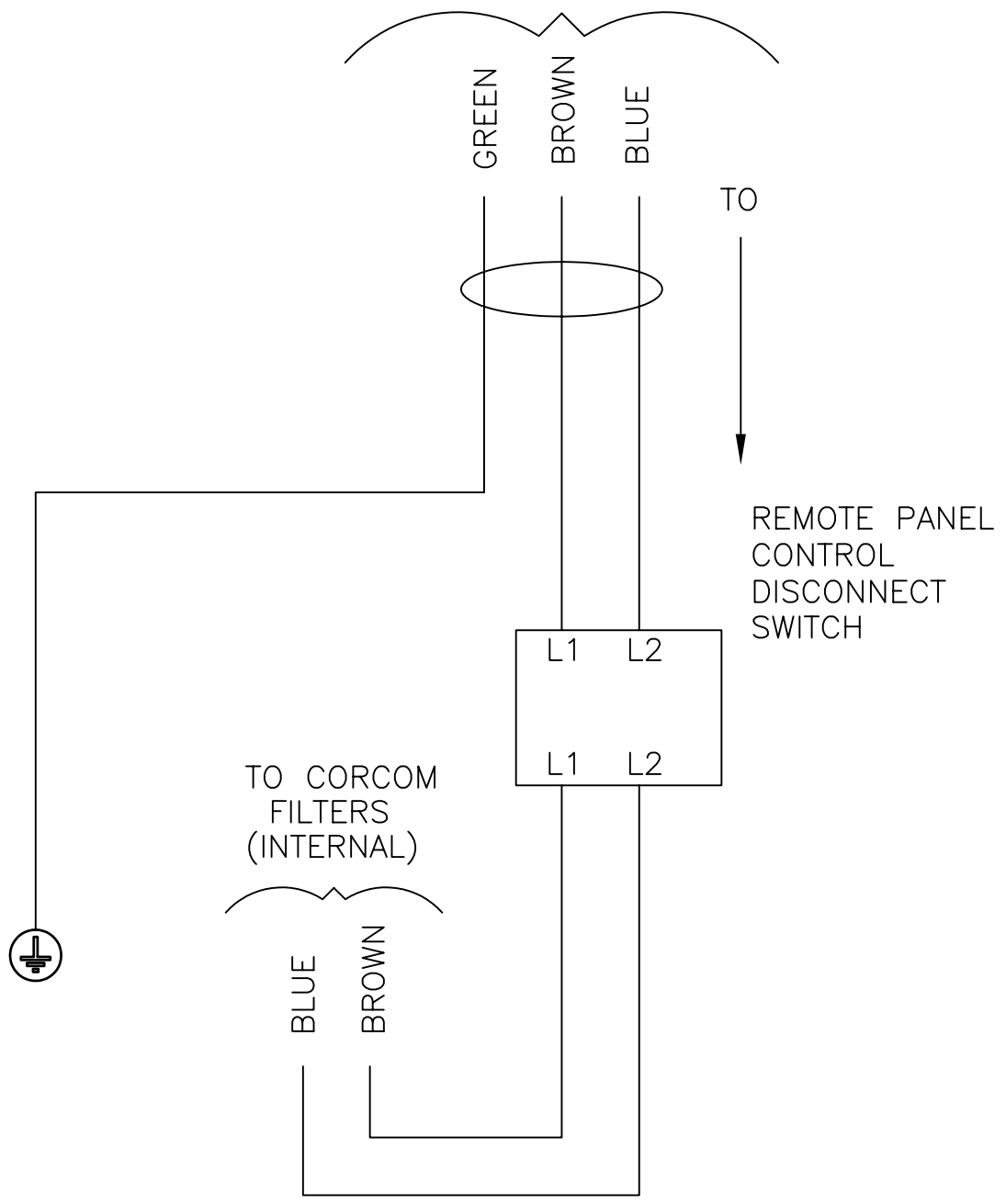
LOCATION(S) _____


ECA. NO. 114128
 REV. DATE 06/08/11
 REV. NO. 4 DWG. NO. 136824-348

DRAWN DATE 08-02-10
 DRAWN BY JKD
 CHECKED BY DH

CAD DWG

FROM ENTRY POINT, RUN AC
 WIRING THROUGH WIRE TROUGH
 TO SWITCH, CHASSIS GROUND -
 BUS BAR



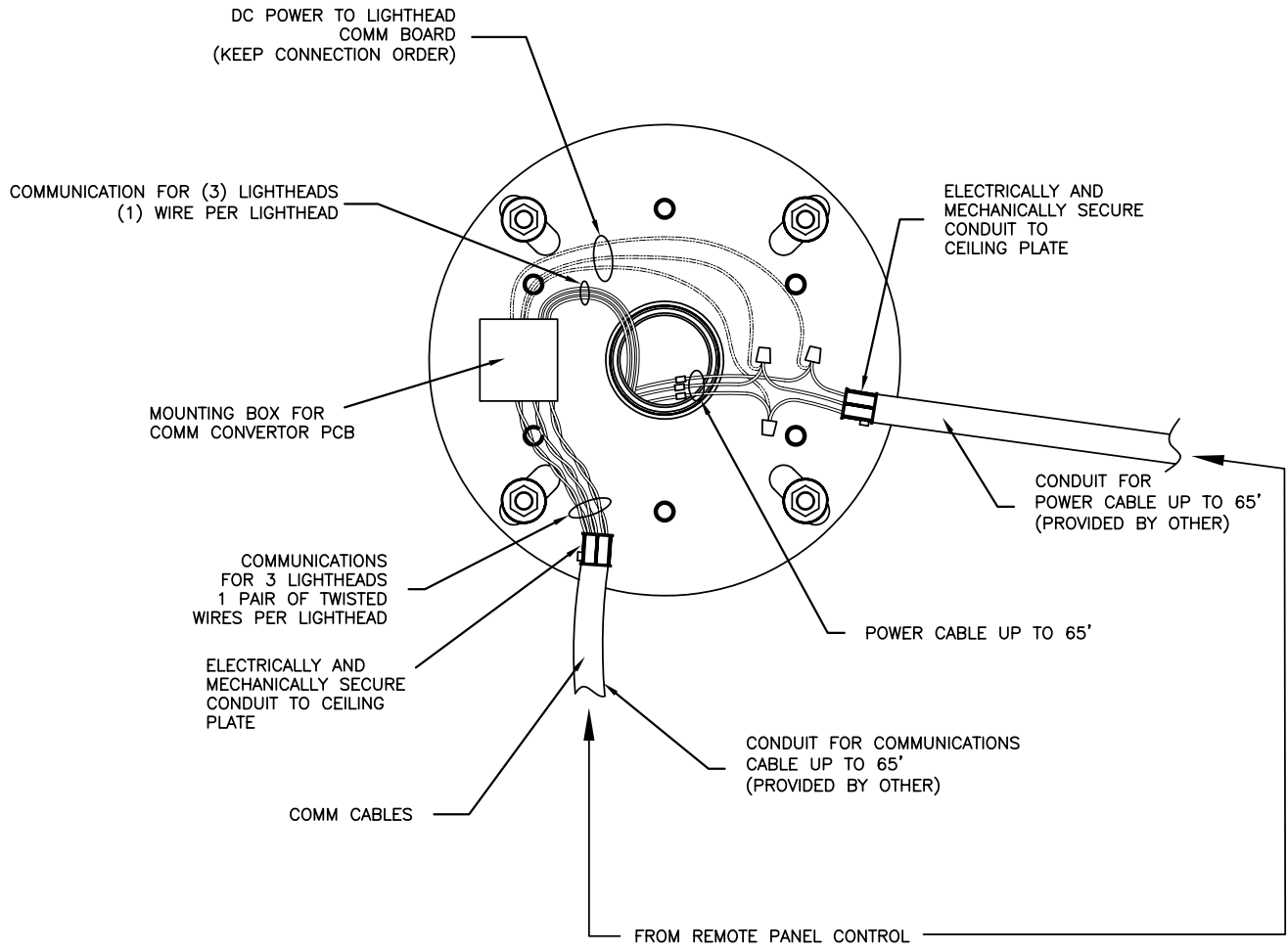
<p>ALL DIMENSIONS ARE IN INCHES</p> <p>ALSO REFER TO GENERAL NOTES APPLICABLE TO EQUIPMENT DRAWINGS</p>	<p>REMOTE PANEL EQUIPMENT DWG., vLED SURGICAL LIGHTING CONTROL SYSTEM</p>	<p>EQUIPMENT DRAWING NO. 136824-348</p>	<p>SHT 12 OF 16</p>
		<p>STERIS Corporation Mentor, OH</p>	<p>ITEM _____</p> <p>LOCATION(S) _____</p>

ECA. NO. 114128
 REV. DATE 06/08/11
 REV. NO. 4 DWG. NO. 136824-348

DRAWN DATE 08-02-10
 DRAWN BY JKD
 CHECKED BY DH

CAD DWG

MOUNTING ON CEILING PLATE FOR CONDUIT AND COMMUNICATIONS BOARD(S)



ALL DIMENSIONS ARE IN INCHES

ALSO REFER TO GENERAL NOTES
 APPLICABLE TO EQUIPMENT DRAWINGS



STERIS Corporation
 Mentor, OH

REMOTE PANEL EQUIPMENT
 DWG., vLED SURGICAL
 LIGHTING CONTROL SYSTEM

EQUIPMENT DRAWING NO.

136824-348 | SHT 13
 OF 16

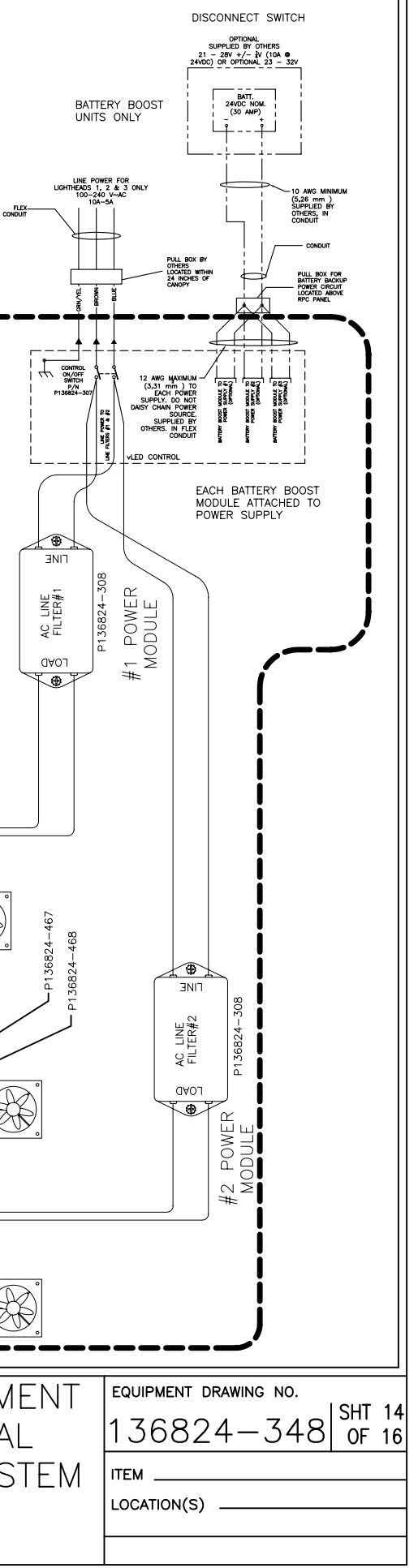
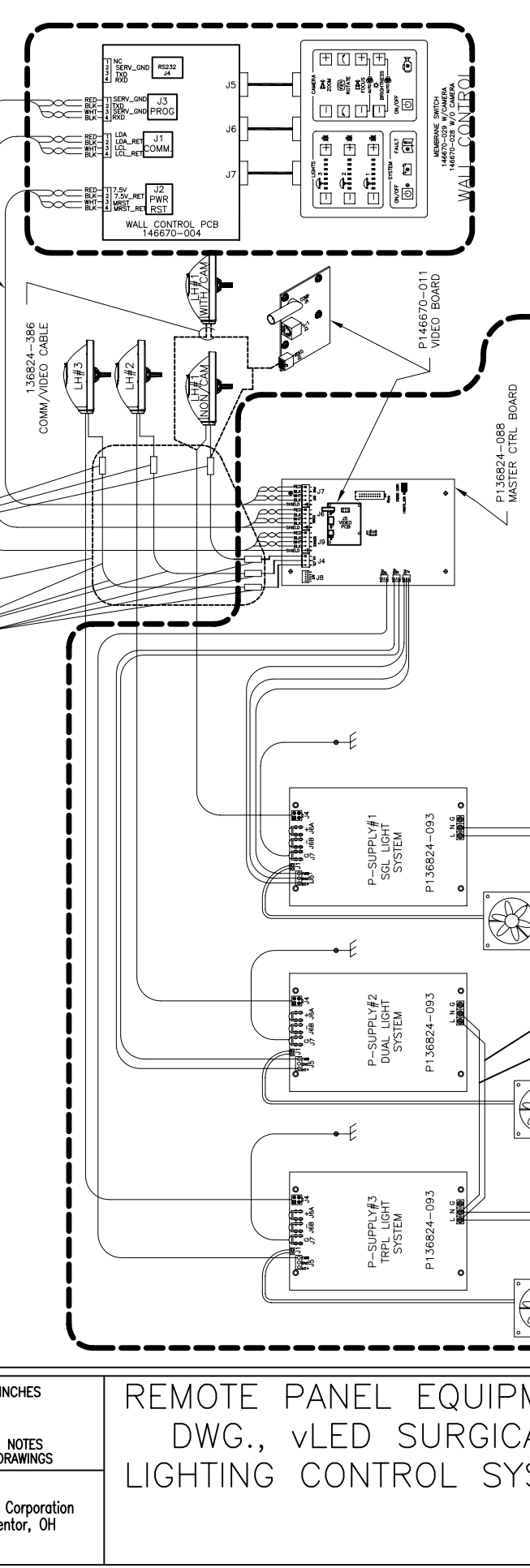
ITEM _____

LOCATION(S) _____

DRAWN DATE 08-02-10 DRAWN BY JKD CHECKED BY DH DISCONNECT SWITCH
 SUPPLIED BY OTHERS
 21 - 29V +/- 1% (10A
 24VDC) OR OPTIONAL 23 - 32V

WIRING SCHEMATIC

- SERVICE CABLE (RED)
093930-031 (65') OPTIONAL NP-RATED P-RATED
093930-046 (65') OPTIONAL P-RATED
093930-032 (35') STANDARD NP-RATED
- COMM. CABLE (YELLOW)
093930-035 (65') OPTIONAL NP-RATED
093930-048 (65') OPTIONAL P-RATED
093930-036 (35') STANDARD NP-RATED
- POWER CABLE (GREEN)
093930-033 (65') OPTIONAL NP-RATED
093930-047 (65') OPTIONAL P-RATED
093930-034 (35') STANDARD NP-RATED



ALL DIMENSIONS ARE IN INCHES

ALSO REFER TO GENERAL NOTES APPLICABLE TO EQUIPMENT DRAWINGS

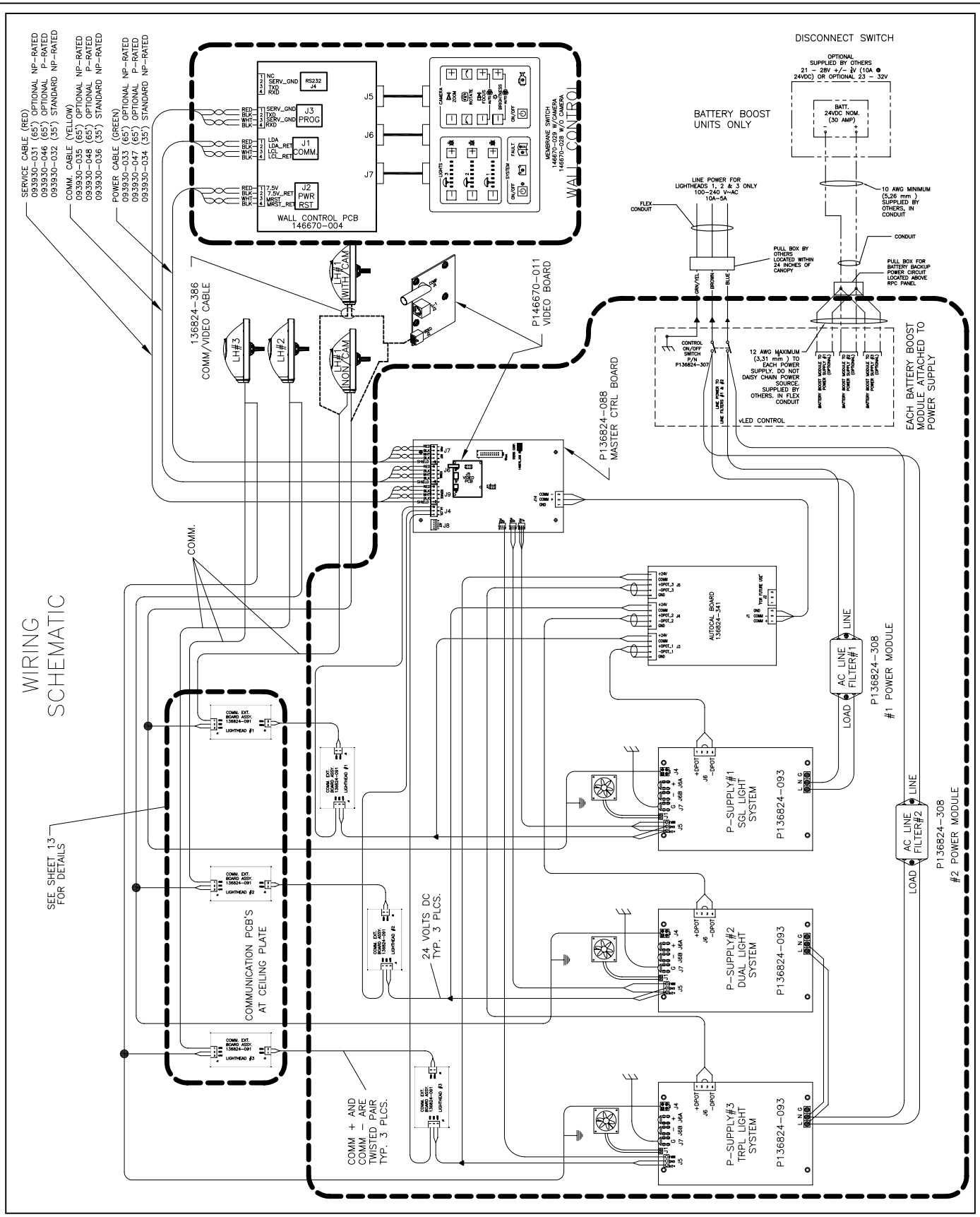


STERIS Corporation
Mentor, OH

REMOTE PANEL EQUIPMENT DWG., vLED SURGICAL LIGHTING CONTROL SYSTEM

EQUIPMENT DRAWING NO.	
136824-348	SHT 14 OF 16
ITEM _____	
LOCATION(S) _____	

WIRING SCHEMATIC



ALL DIMENSIONS ARE IN INCHES

ALSO REFER TO GENERAL NOTES APPLICABLE TO EQUIPMENT DRAWINGS



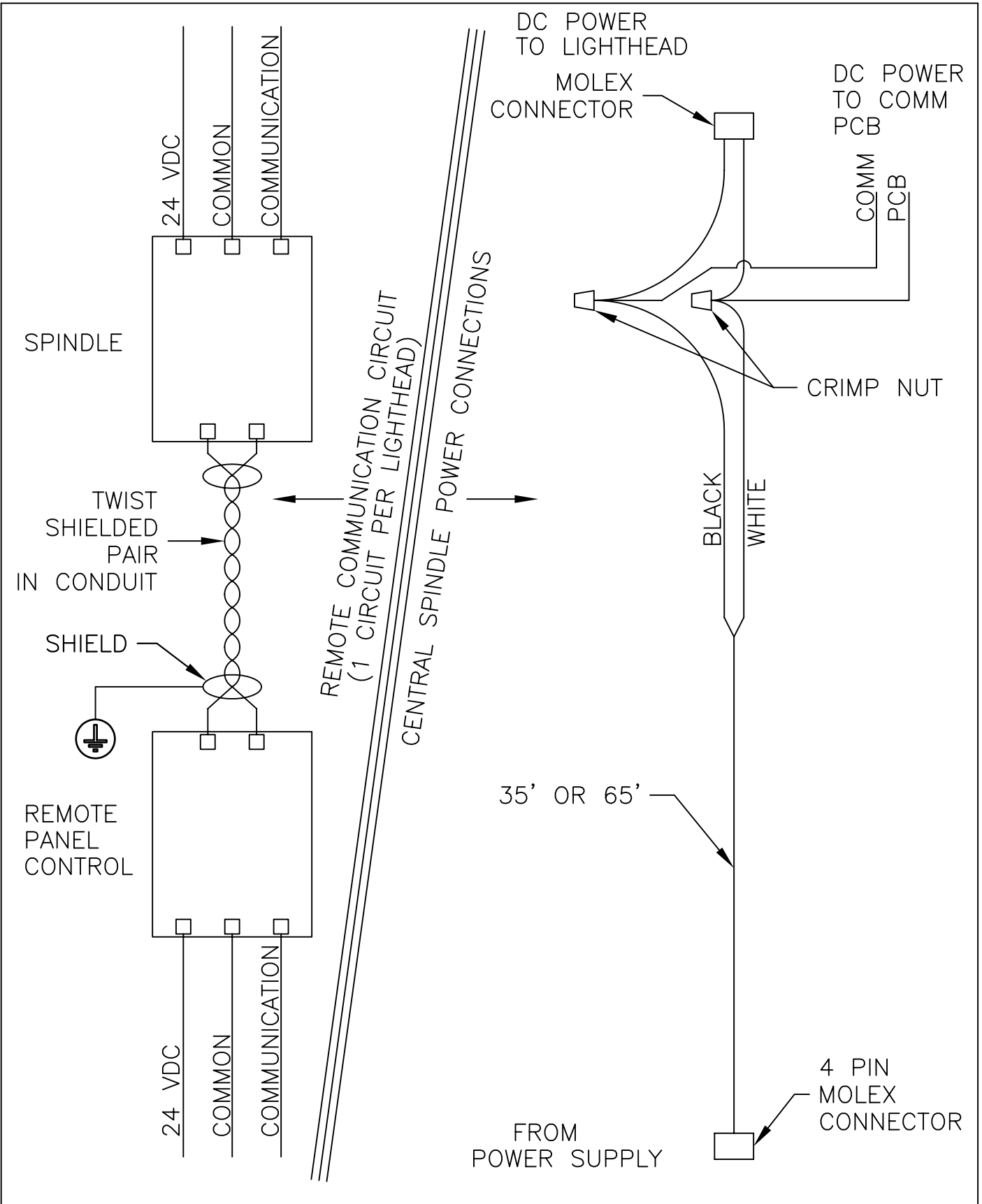
STERIS Corporation
Mentor, OH


REMOTE PANEL EQUIPMENT
DWG., vLED SURGICAL
LIGHTING CONTROL SYSTEM

EQUIPMENT DRAWING NO.
136824-348 SHT 15
OF 16

ITEM _____
LOCATION(S) _____

ECA. NO. 114128
 REV. DATE 06/08/11
 REV. NO. 4 DWG. NO. 136824-348
 DRAWN DATE 08-02-10
 DRAWN BY JKD
 CHECKED BY DH
 CAD DWG



<p>ALL DIMENSIONS ARE IN INCHES</p> <p>ALSO REFER TO GENERAL NOTES APPLICABLE TO EQUIPMENT DRAWINGS</p>	<p>REMOTE PANEL EQUIPMENT DWG., vLED SURGICAL LIGHTING CONTROL SYSTEM</p>	<p>EQUIPMENT DRAWING NO. 136824-348 SHT 16 OF 16</p>
<p>STERIS  STERIS Corporation Mentor, OH</p>		<p>ITEM _____</p> <p>LOCATION(S) _____</p>