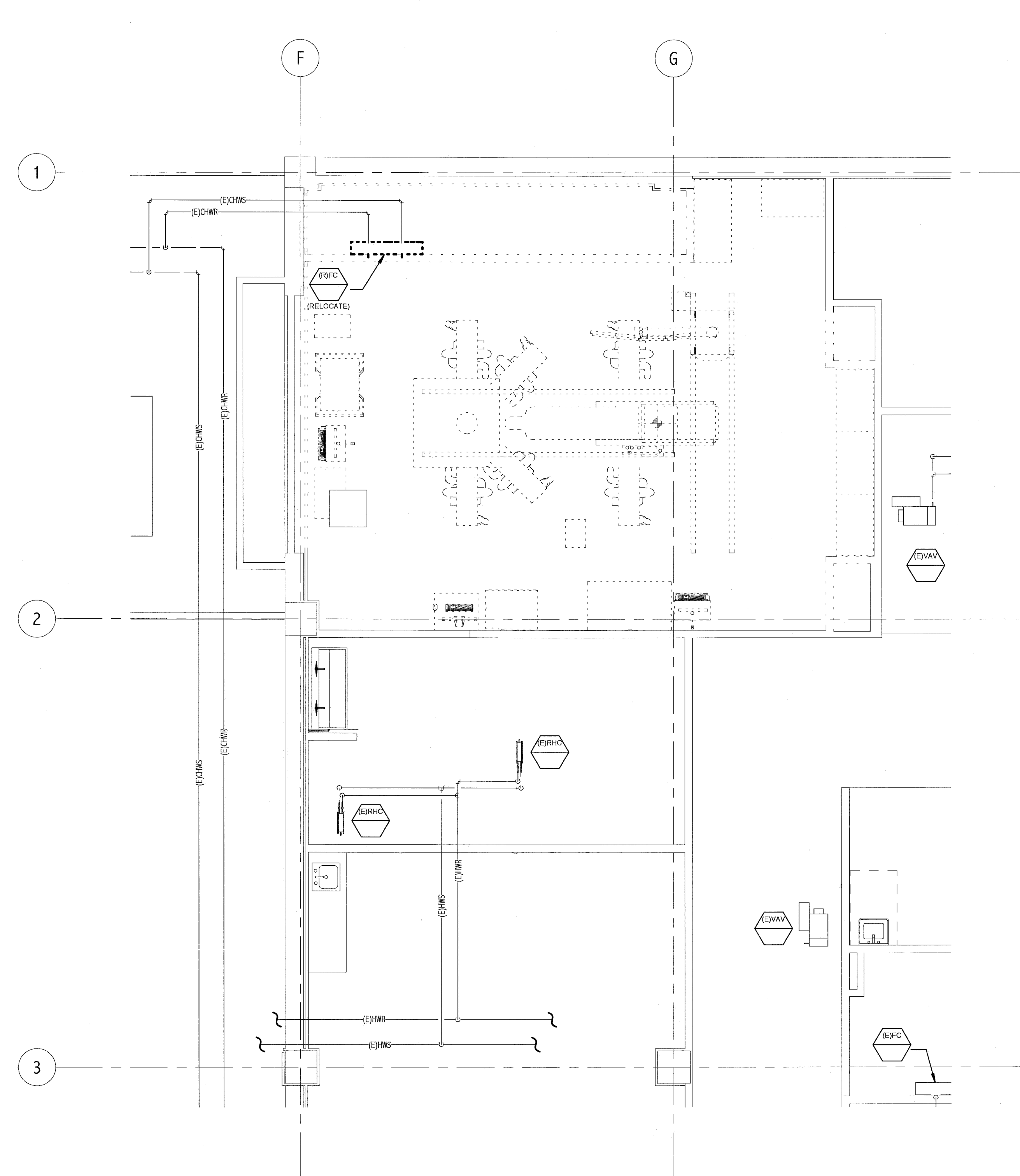


NOTE:

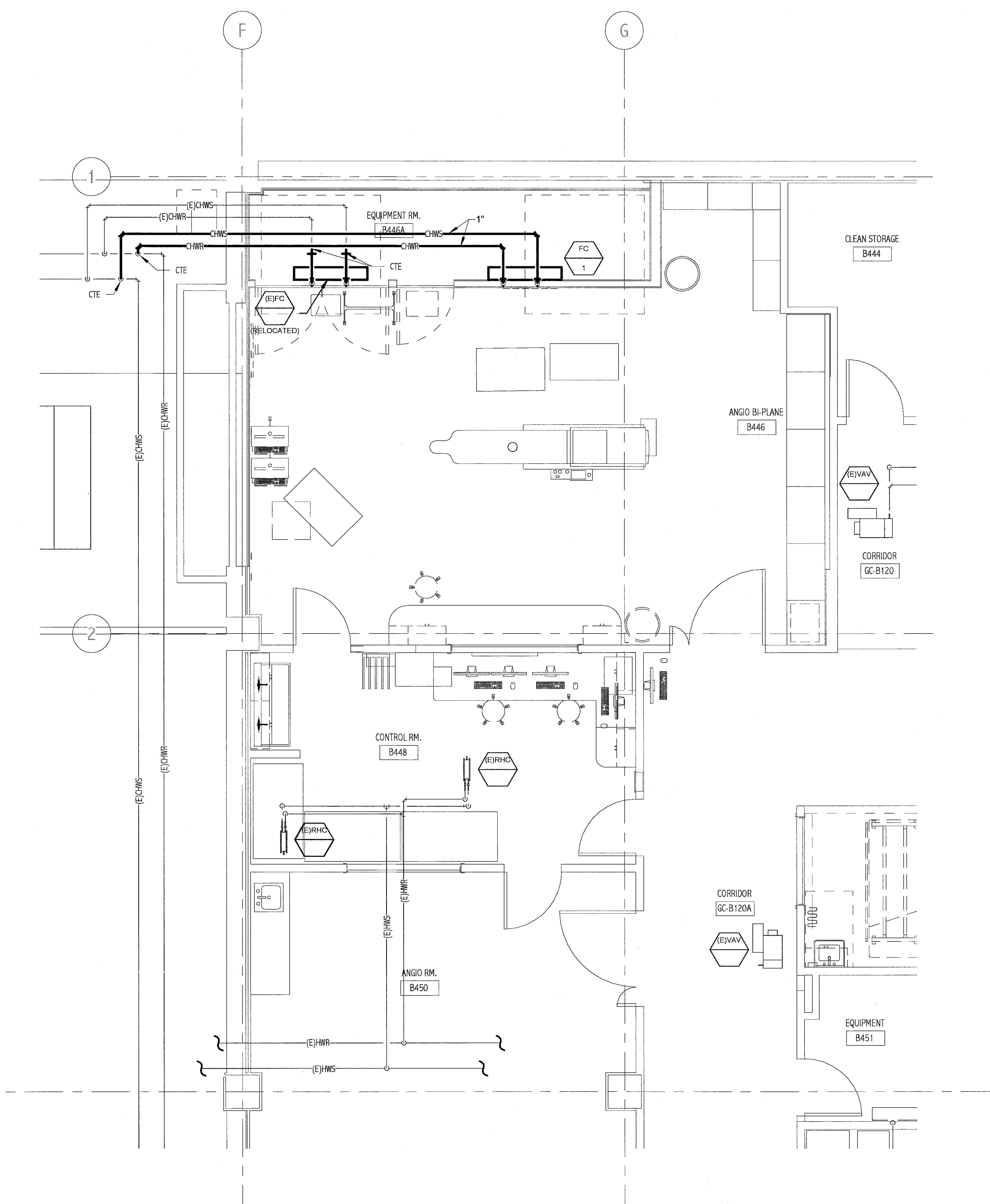
1. SEE SHEET M-001 FOR LEGEND AND GENERAL NOTES.

| FAN COIL UNIT SCHEDULE | | | | | | | | | | | | | | | | | |
|------------------------|-------|------------|--------------|---------|--------|----------|-----|-----------|-----------|-----------------|------|-------|----|---------------------|------|------------------------------|-------|
| TAG | TYPE | SP IN W.G. | COOLING SDBH | MAX CFM | EWT °F | WATER AT | GPM | WPD FT WC | ESP IN WC | ELECTRICAL DATA | | | | MAX UNIT DIMENSIONS | WT # | TYPICAL UNIT MFG & MODEL NO. | NOTES |
| | | | | | | | | | | HP | FLA | VOLTS | PH | | | | |
| FC-1 | 2-PPE | N/A | 14.2 | 600 | 44 | 12 | 5 | 10.5 | N/A | 1/20 | 0.35 | 208 | 1 | 47x15x8"D | 50 | MULTIQUA MHW-244-1 | * |

NOTES:
1.
2.
3.



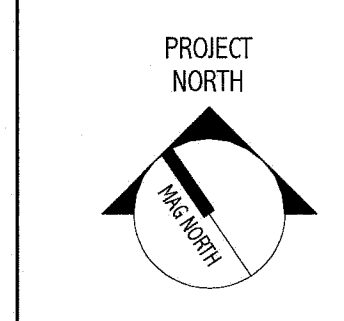
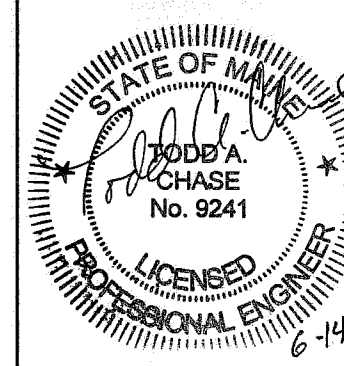
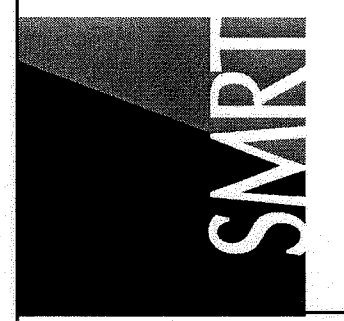
1 BASEMENT HVAC PIPING DEMOLITION PLAN
1/4" = 1'-0"



2 BASEMENT HVAC PIPING PLAN
1/4" = 1'-0"

144 Forest Street, Box 618
Portland, Maine 04104
tel: (207) 772-3846
fax: (207) 772-1070
www.smrt.com

ARCHITECTURE
ENGINEERING
PLANNING
INTERIOR DESIGN
COMMISSIONING



Bramhall Radiology
ANGIO BI-PLANE RENOVATIONS
PORTLAND, ME

ISSUED FOR CONSTRUCTION
06.14.11

CURRENT ISSUE STATUS:

| REV | DESCRIPTION | DATE |
|-----|-------------------------|------|
| 0 | ISSUED FOR CONSTRUCTION | |

GRAPHIC SCALE:
0" 1"

SCALE: As Indicated
PROJECT MANAGER: DIV
DRAWN BY: KPB
AGE OF RECORD: TAC
PROJECT NO: 11011
DATE: 06.14.11

SHEET TITLE:
BASEMENT HVAC
PIPING PLANS

SHEET No.
MP101