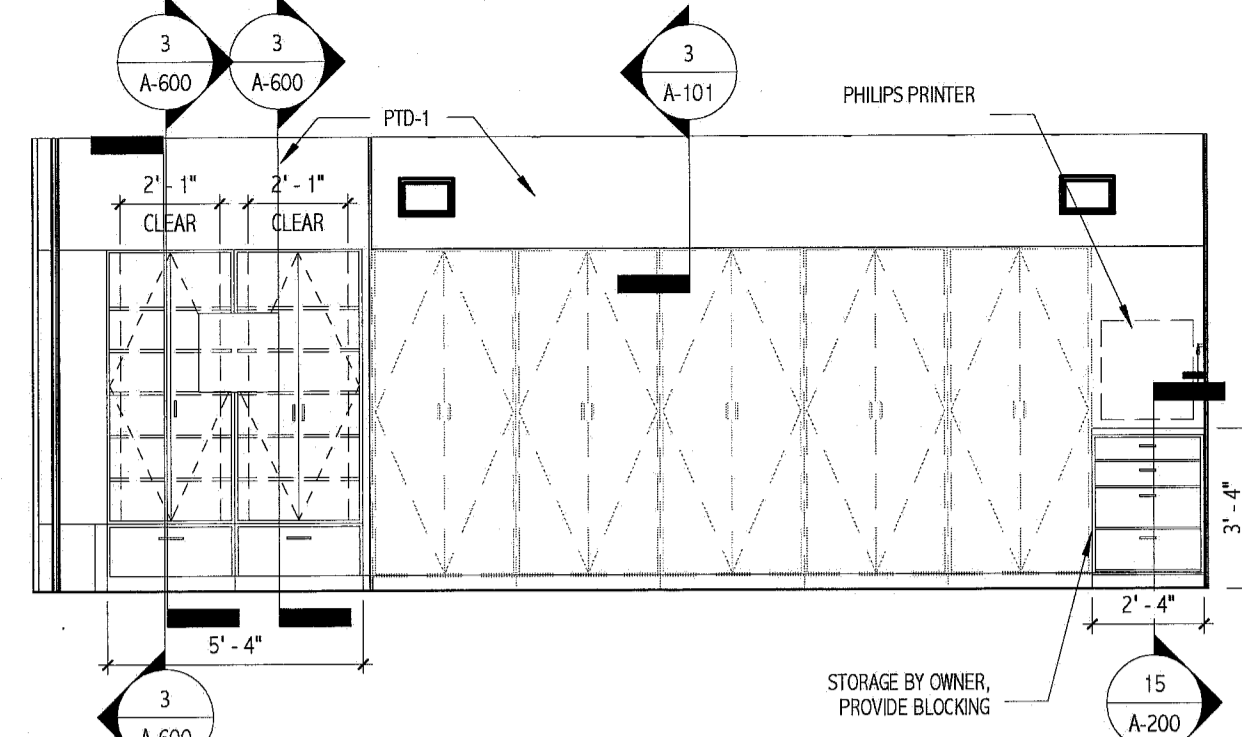
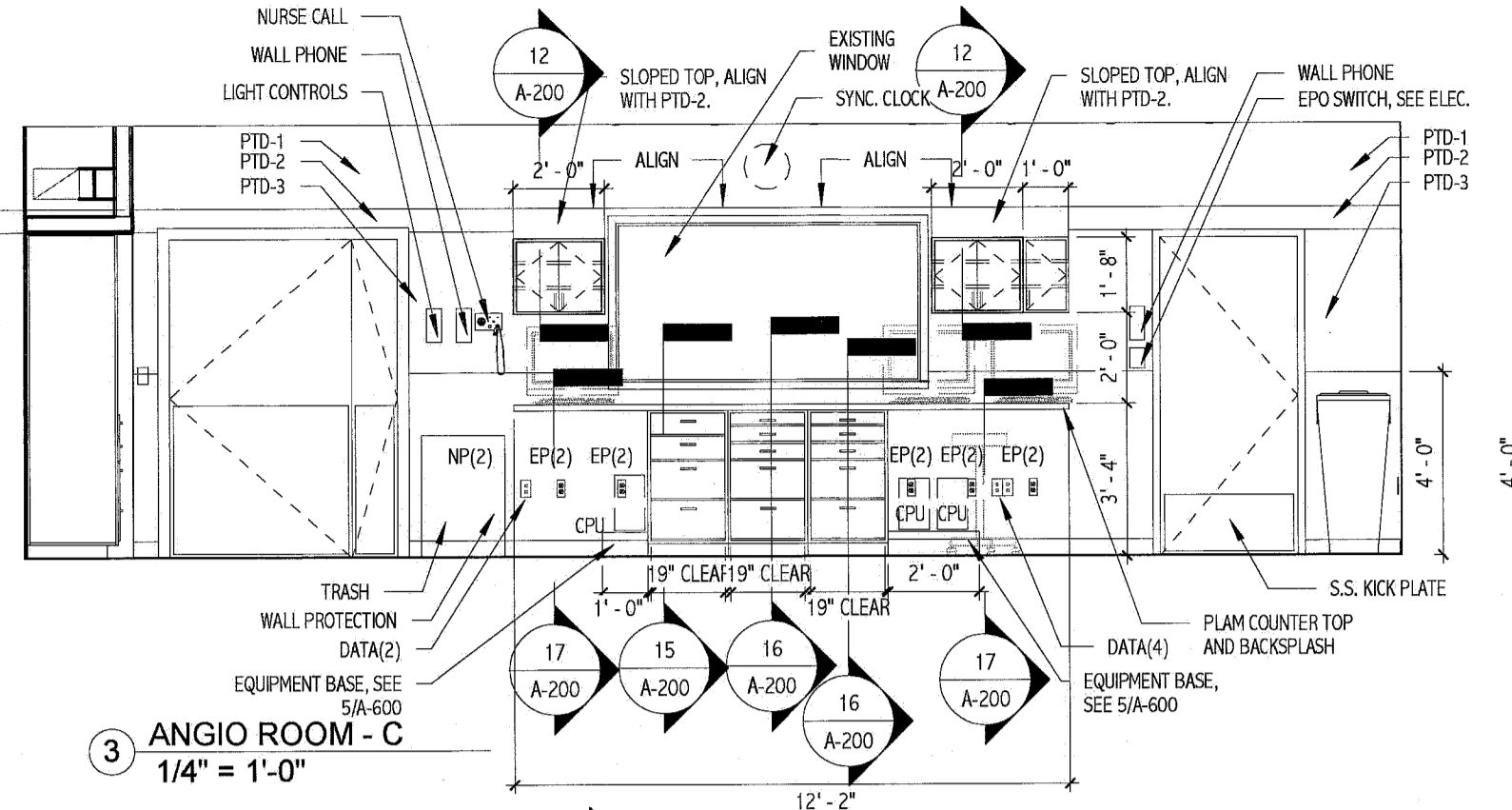


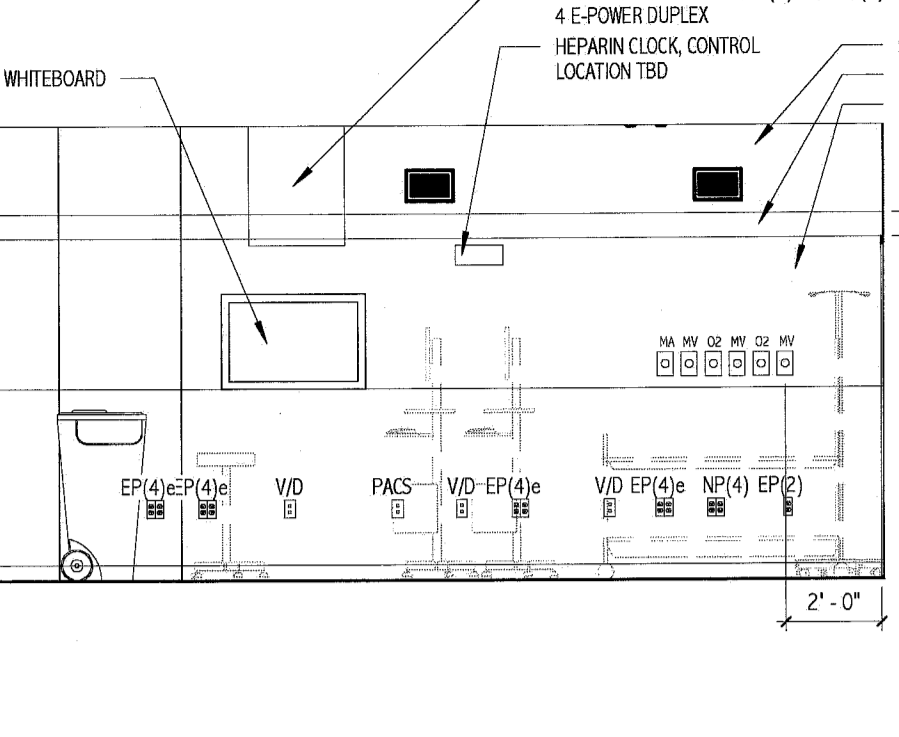
1 ANGIO ROOM - A
1/4" = 1'-0"



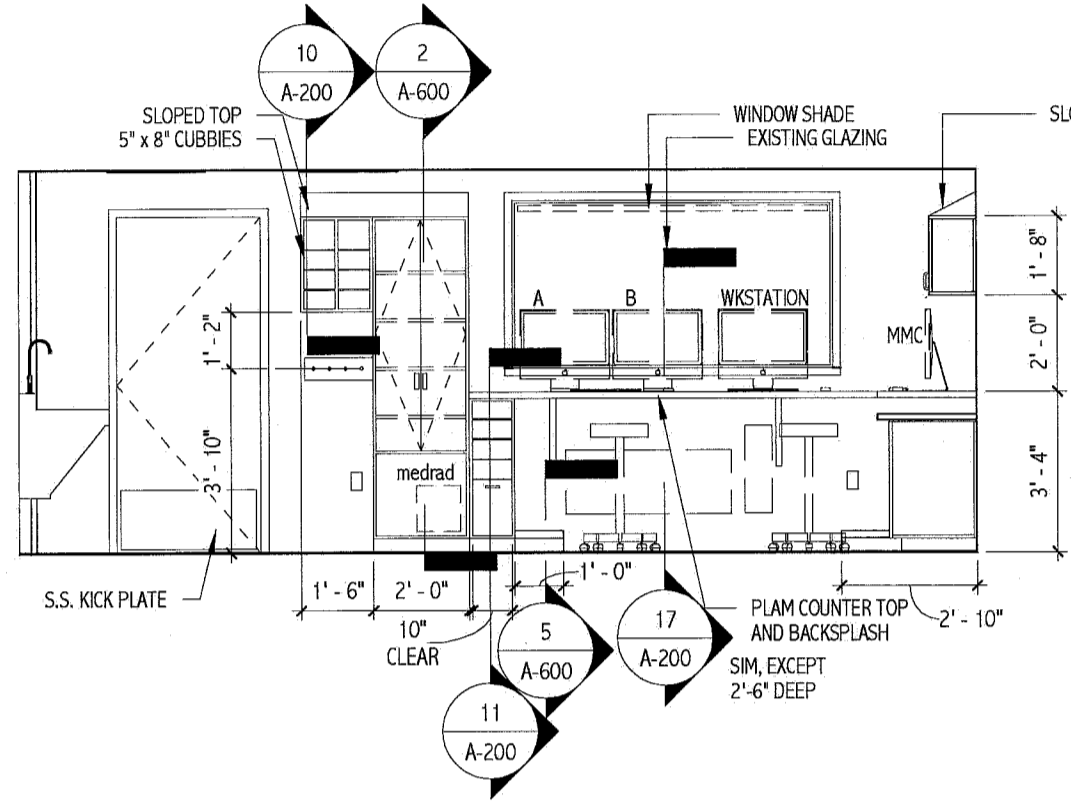
2 ANGIO ROOM - B
1/4" = 1'-0"



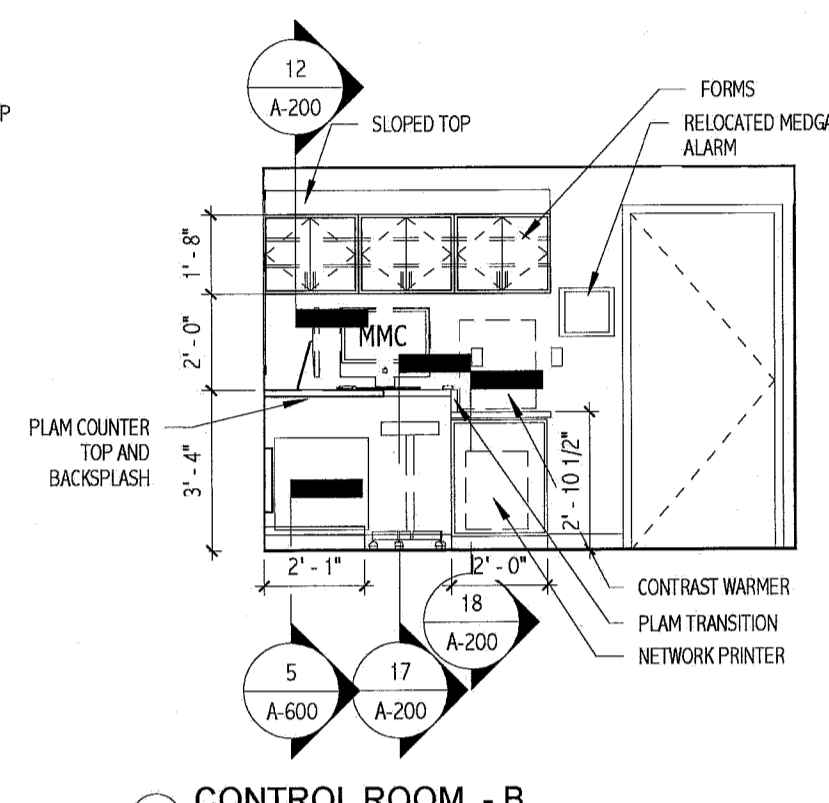
3 ANGIO ROOM - C
1/4" = 1'-0"



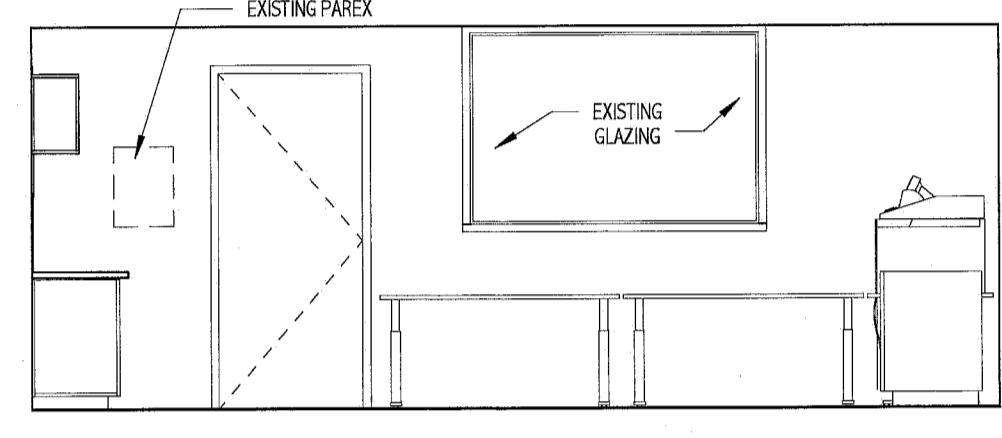
4 ANGIO ROOM - D
1/4" = 1'-0"



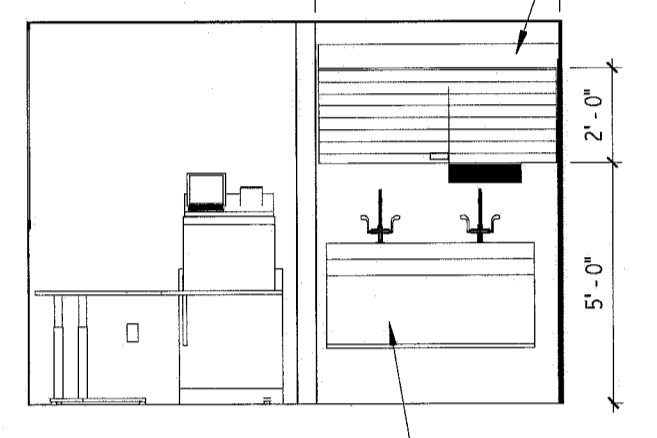
5 CONTROL ROOM - A
1/4" = 1'-0"



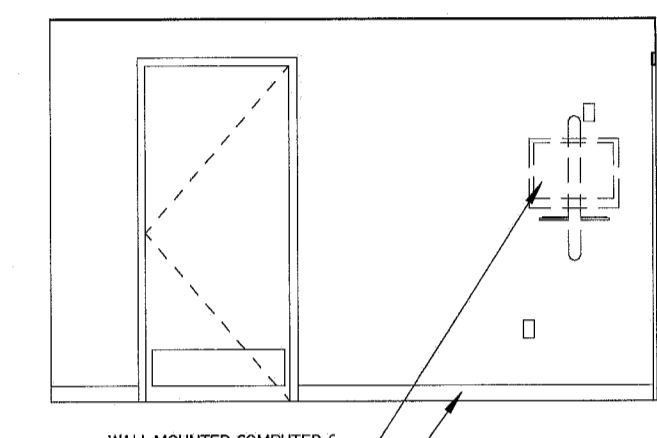
6 CONTROL ROOM - B
1/4" = 1'-0"



7 CONTROL ROOM - C
1/4" = 1'-0"



8 CONTROL ROOM - D
1/4" = 1'-0"



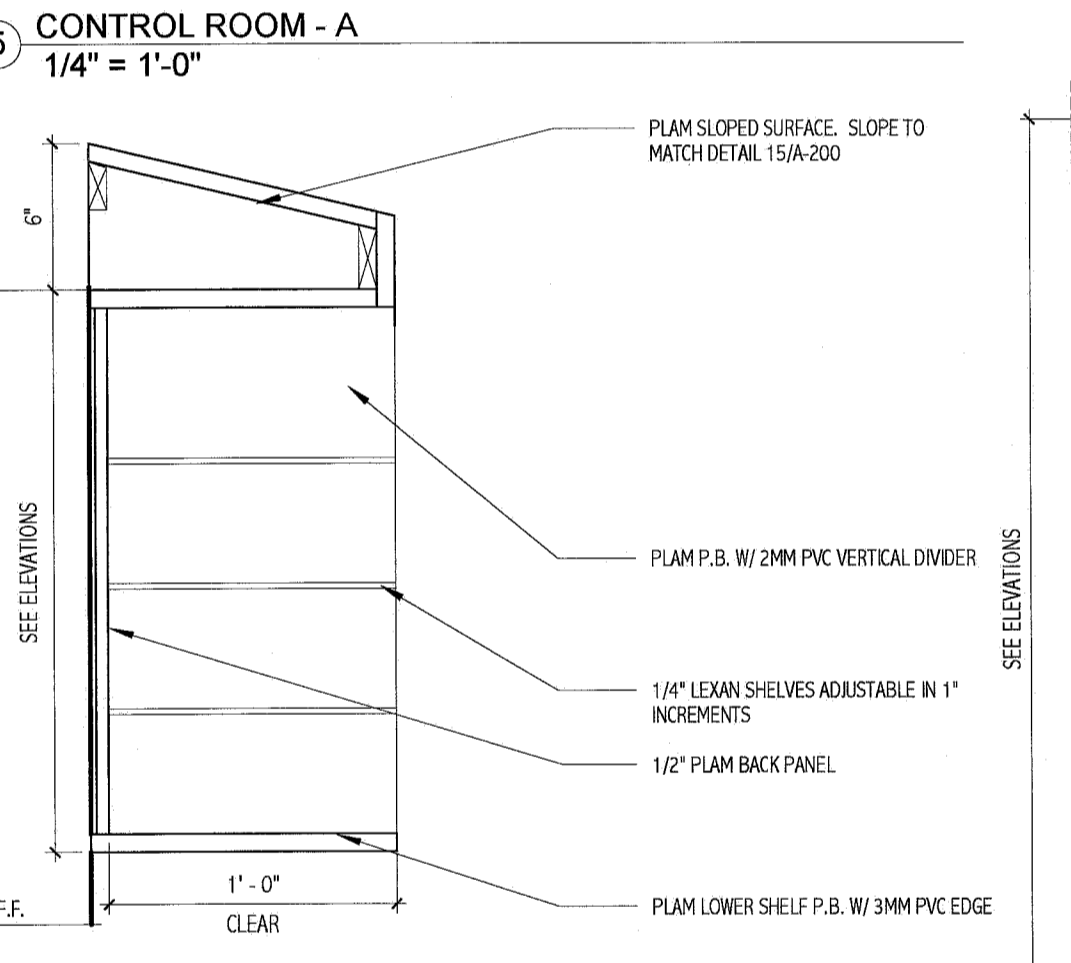
9 CORRIDOR - A
1/4" = 1'-0"

GENERAL ELEVATION NOTES:

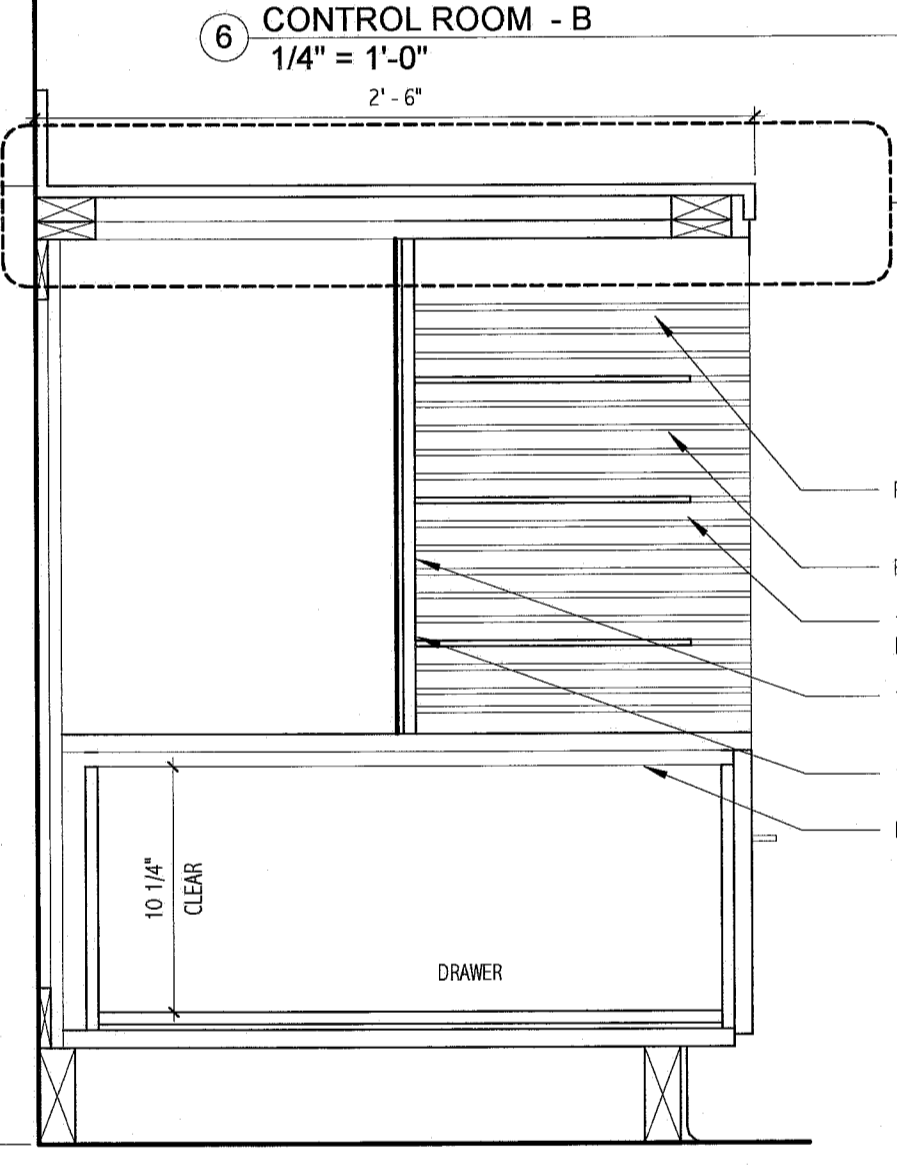
- SEE G001 FOR MOUNTING HEIGHTS.
- CONTRACTOR TO FIELD VERIFY ALL DIMENSIONS.
- CONCEALED CABINET INTERIORS TO BE WHITE MELAMINE. EXPOSED CABINET INTERIORS TO MATCH CABINET PLAM.
- ALL DOORS AND DRAWERS SHALL BE EDGE BANDED WITH PLAM TO MATCH FACE.
- GRAIN DIRECTION OF WOOD-GRAIN PLAM SHALL BE VERTICAL ON ALL DOORS AND DRAWERS.
- FURNITURE SHOWN FOR INFORMATION AND COORDINATION PURPOSES ONLY. PROVIDE BLOCKING AND PINS AS REQUIRED.
- FOR CASEWORK, SEE A-500 FOR MORE INFORMATION.
- SEE FINISH SCHEDULE FOR MORE INFORMATION REGARDING FINISHES. SEE A-500.

CASEWORK HARDWARE NOTES:

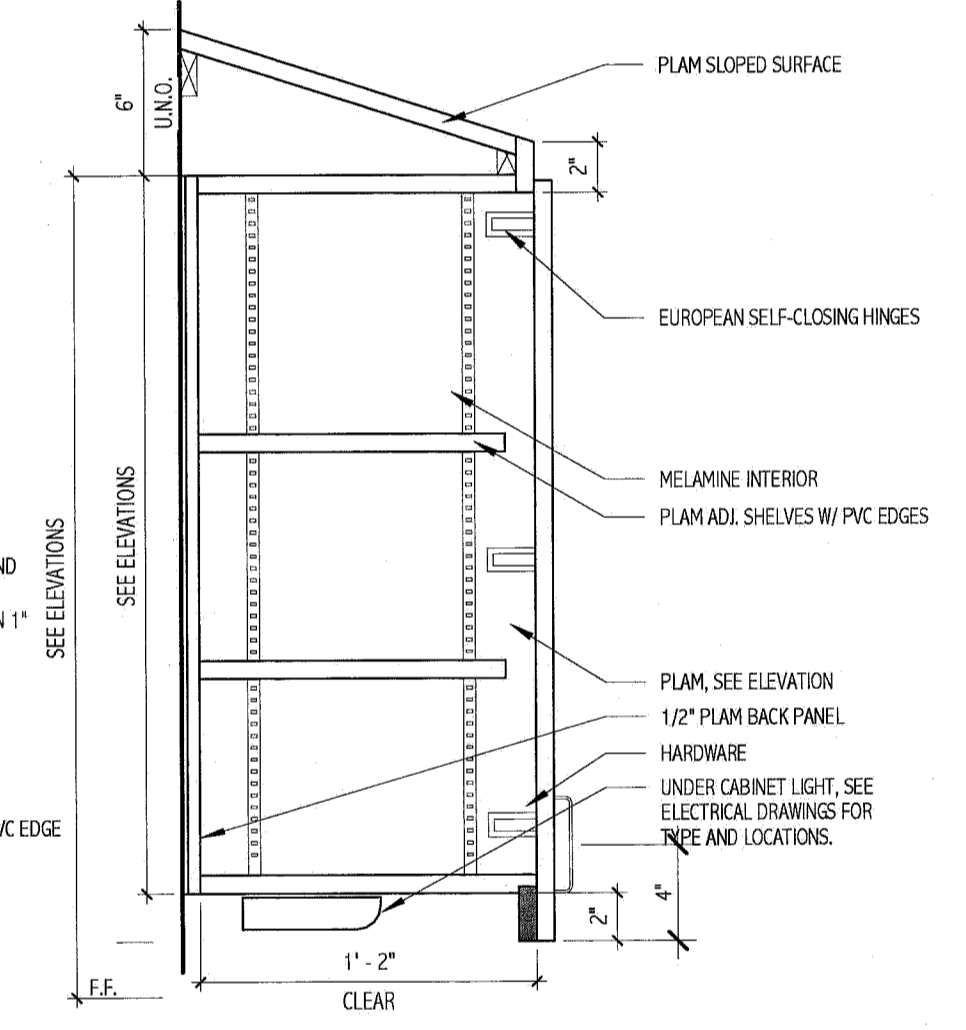
- PROVIDE PRODUCTS LISTED BELOW OR SUBMIT ALTERNATE PRODUCTS FOR APPROVAL.
- SURFACE DOOR PULLS TO BE HAELE #115.60.602 SATIN FINISHED STAINLESS STEEL BOW PULLS.
- HINGES TO BE BLUM CLIP TOP 120 DEGREE CONCEALED EUROPEAN STYLE HINGE.
- FULL-EXTENSION DRAWER SLIDES TO BE KNAPE & VOGT #8400 SERIES WITH WHITE EPOXY FINISH.
- ADJUSTABLE SHELF PINS TO BE KV #345 NP.
- COUNTERTOP SUPPORT BRACKETS TO BE RANKS BRACKET. MODEL NUMBER SHOULD BE DETERMINED BY COUNTERTOP SIZE AND COUNTERTOP LOAD.



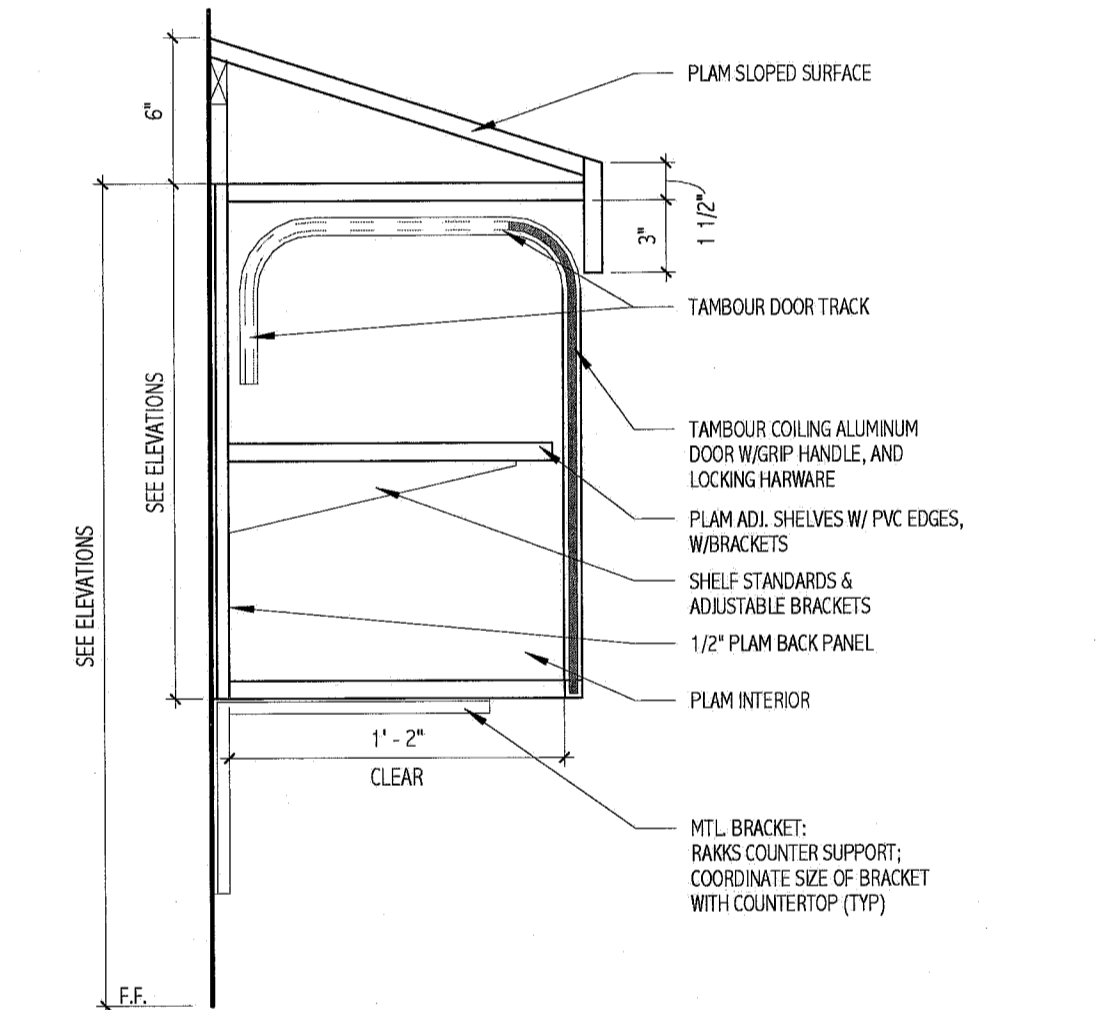
10 CASEWORK DETAIL
1 1/2" = 1'-0"



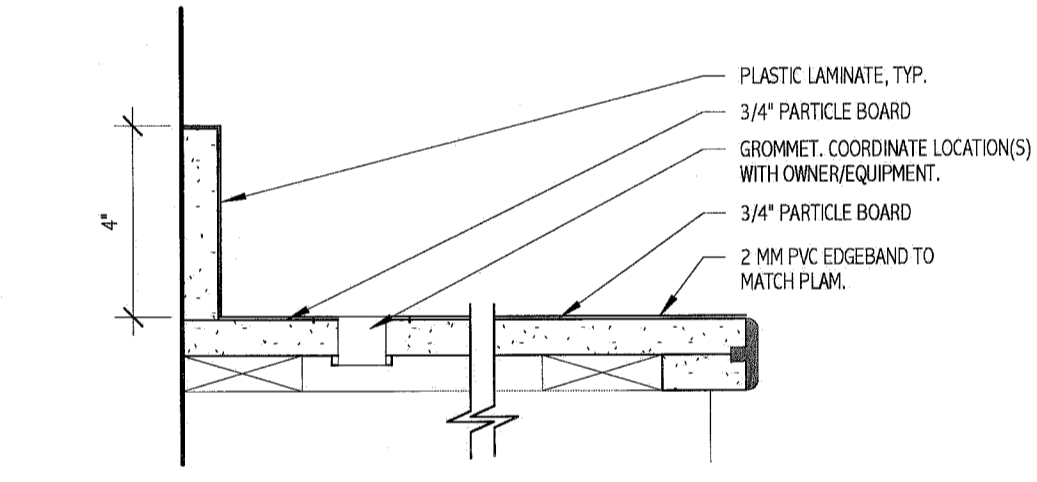
11 CASEWORK DETAIL
1 1/2" = 1'-0"



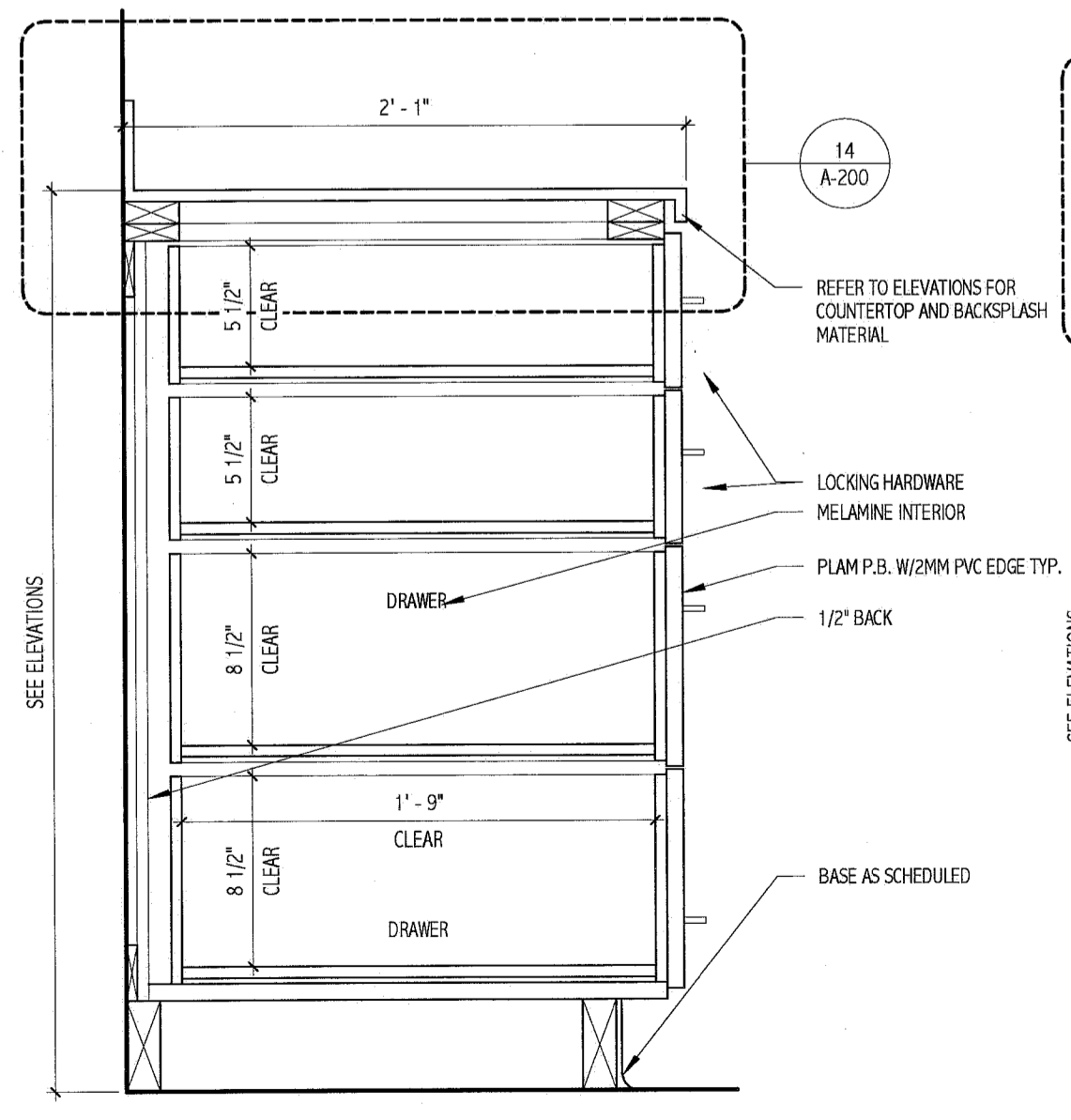
12 CASEWORK DETAIL
1 1/2" = 1'-0"



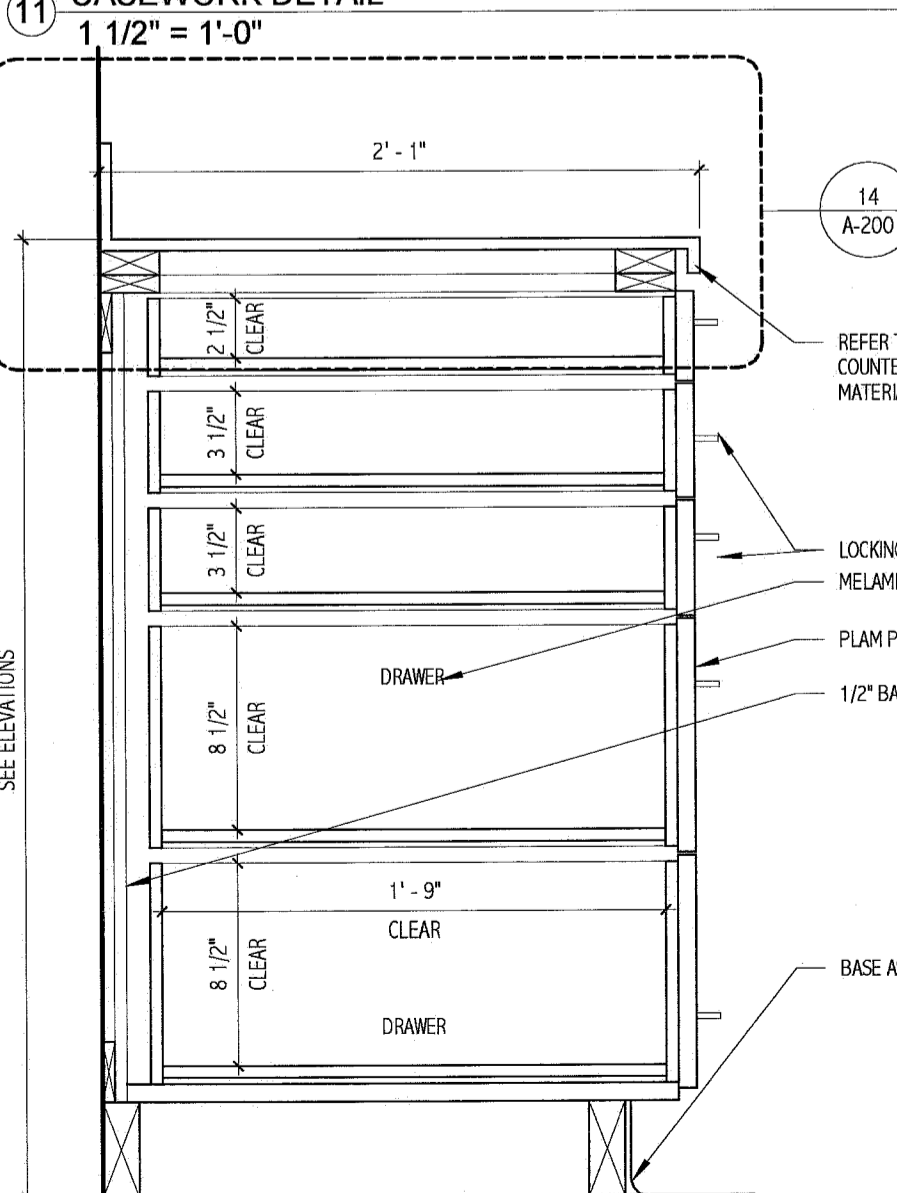
13 CASEWORK DETAIL
1 1/2" = 1'-0"



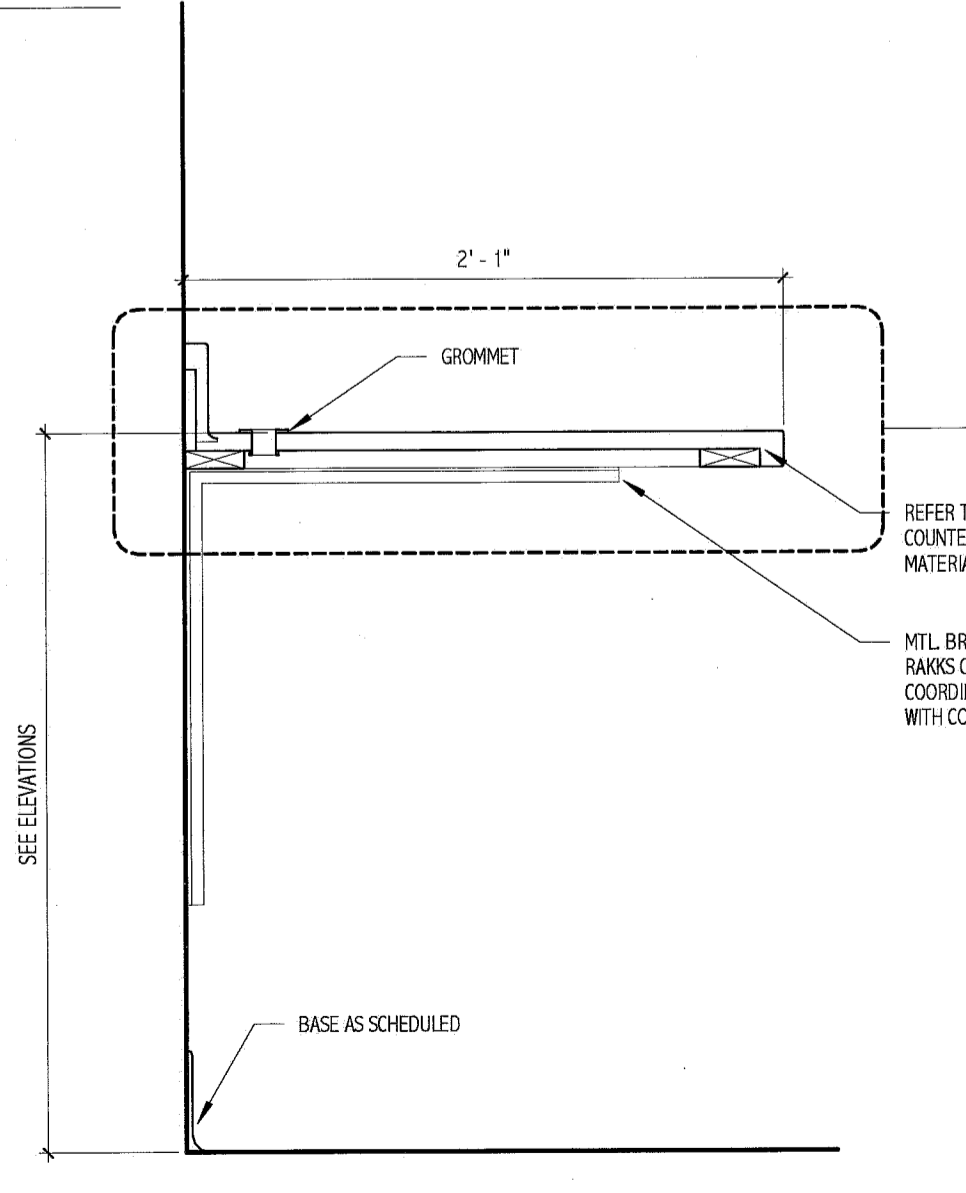
14 COUNTER TOP DETAIL
3" = 1'-0"



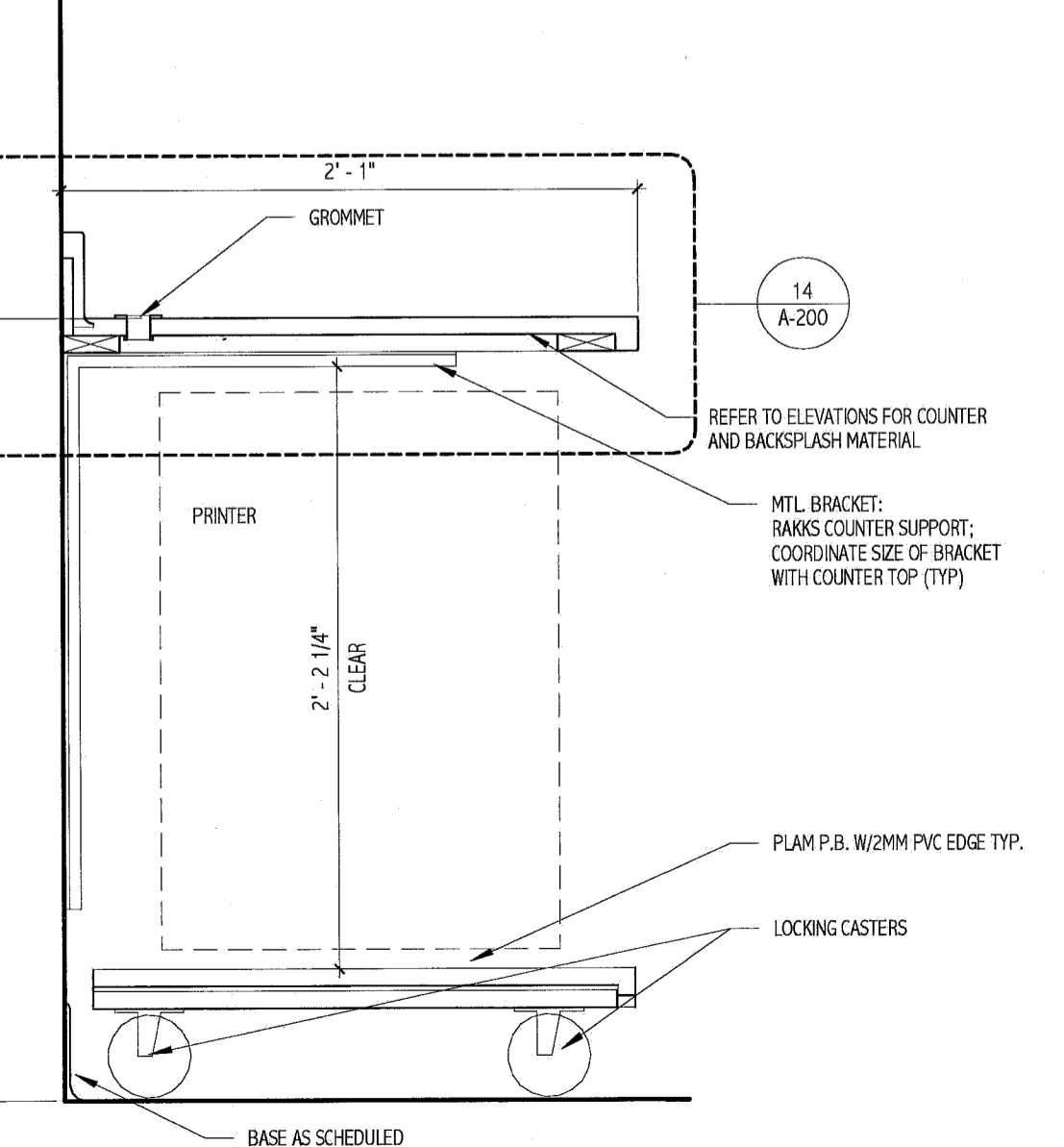
15 CASEWORK DETAIL
1 1/2" = 1'-0"



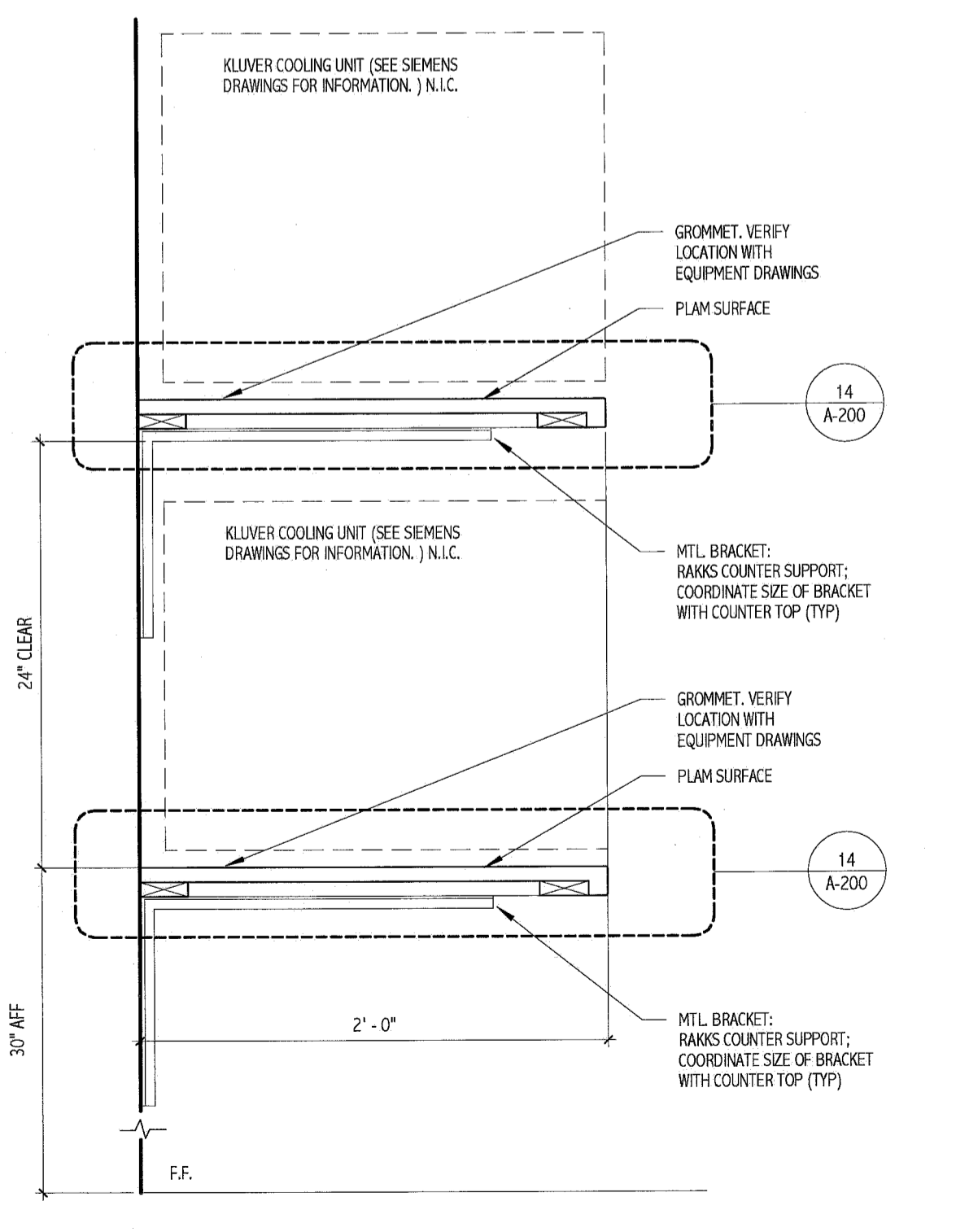
16 CASEWORK DETAIL
1 1/2" = 1'-0"



17 CASEWORK DETAIL
1 1/2" = 1'-0"



18 CASEWORK DETAIL
1 1/2" = 1'-0"



19 CASEWORK DETAIL
1 1/2" = 1'-0"

144 Free Street, P.O. Box 618
Portland, Maine 04108
Tel: (207) 772-3846
Fax: (207) 772-1070
www.wmfinc.com

ARCHITECTURE
ENGINEERING
PLANNING
INTERIOR DESIGN
COMMISSIONING

SMART

LICENSED ARCHITECT
DEREK J. VEILLEUX
No. 3185
6.14.11
STATE OF MAINE

Bramhall Radiology
ANGIO BI-PLANE RENOVATIONS
PORTLAND, ME

ISSUED FOR CONSTRUCTION
06.14.11

NO.	DATE	DESCRIPTION	BY	REV

GRAPHIC SCALE:
0' 1'

SCALE: As Indicated
PROJECT MANAGER: DIV
DRAWN BY: ART
A/E OF RECORD: DIV
PROJECT NO: 11011
DATE: 06.14.11

SHEET TITLE:
INTERIOR
ELEVATIONS AND
DETAILS

SHEET No:
A-200