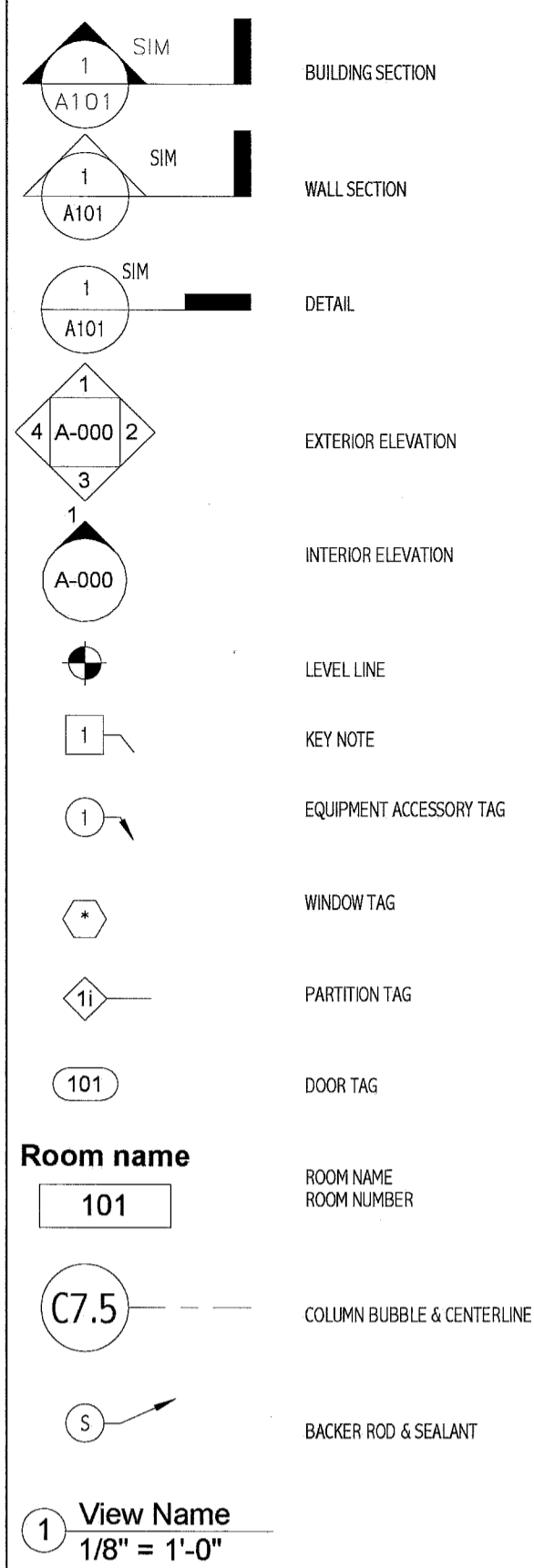


**ABBREVIATIONS:**

|        |                                           |       |                                     |
|--------|-------------------------------------------|-------|-------------------------------------|
| AB     | ANCHOR BOLT                               | L     | ANGLE / LENGTH                      |
| ACC    | AIR CONDITIONING                          | LF    | LEFT                                |
| ACCU   | AIR CONDITIONING CONDENSER UNIT           | LNO   | LINO                                |
| ACPLAS | ACOUSTICAL PLASTER                        | LL    | LONG LEG HORIZONTAL                 |
| ACT    | ACTUATING TILE                            | LLH   | LONG LEG HORIZONTAL                 |
| AF     | ABOVE FINISH FLOOR                        | LLV   | LONG LEG VERTICAL                   |
| AGG    | AGGREGATE                                 | LP    | LONG LEG VERTICAL                   |
| ALT    | ALTERNATE                                 | MAX   | MAXIMUM                             |
| AP     | ACCESS PANEL                              | MB    | MARKER BOARD                        |
| APRDX  | APPROXIMATE                               | MDO   | MEDIUM DENSITY OVERLAY              |
| ARCH   | ARCHITECTURAL                             | MCHI  | MECHANICAL                          |
|        |                                           | MFR   | MANUFACTURER                        |
| BCK    | BOTTOM CORNER EXTENSION                   | MIN   | MINIMUM                             |
| BD     | BOARD                                     | MSC   | MISCELLANEOUS                       |
| BIT    | BITUMINOUS                                | MO    | MASONRY OPENING                     |
| BLDG   | BUILDING                                  | MR    | MOISTURE-RESISTANT                  |
| BLP    | BORROWED LIGHT PANEL                      | MUA   | MAKE-UP AIR                         |
| BO     | BOTTOM OF                                 |       |                                     |
| BOF    | BOTTOM OF FOOTING                         | N     | NOSING                              |
| BOS    | BOTTOM OF STEEL                           | NCB   | NEW CATCH BASIN                     |
| BOT    | BOTTOM                                    | NDHM  | NEW DRAIN MANHOLE                   |
| BRDG   | BRIDGING                                  | NEM   | NEW FORCE MAIN                      |
| BRC    | BRACING                                   | NS    | NOT IN CONTRACT                     |
| BS     | BOTH SIDES                                | NIC   | NEAR SIDE                           |
| BSE    | BRICK SHELF ELEVATION                     | NSD   | NEW STORM DRAIN LINE                |
|        |                                           | NSS   | NEW SANITARY SEWER LINE             |
| CB     | CHANNEL                                   | NTS   | NOT TO SCALE                        |
| CBM    | CATCH BASIN / CHALKBOARD                  | NW    | NEW WATER LINE                      |
| CEM    | CEMENTitious BACKER BOARD                 | OC    | ON CENTER                           |
| CFM    | CFM FEET PER MINUTE                       | OH    | OUTSIDE FACE                        |
| CP     | CAST IN PLACE                             | OV    | OVERHEAD                            |
| CJ     | CONTROL JOINT / CONSTRUCTION JOINT        | PA    | PUBLIC ADDRESS                      |
| CL     | CENTER LINE                               | PAF   | POWER ACTIATED FASTENER             |
| CLL    | CONTRACT LIMIT LINE                       | PFU   | POOL DEHUMIDIFICATION UNIT          |
| CLR    | CLEAR                                     | PL    | PLATE / PROPERTY LINE               |
| CMS    | CONCRETE MASONRY UNIT                     | PLM   | PLASTIC LAMINATE                    |
| COL    | COLUMN                                    | PLF   | POUNDS PER LINEAR FOOT              |
| CONC   | CONCRETE                                  | PP    | POUNDS PER SQUARE FOOT              |
| CONT   | CONTINUOUS                                | PSF   | POUNDS PER SQUARE FOOT              |
| CT     | CERAMIC TILE                              | PT    | PRESSURE-TREATED                    |
| CUH    | CABINET UNIT HEATER                       | PVC   | POLYVINYL CHLORIDE                  |
|        |                                           | PVM   | PAVEMENT                            |
| D      | DIAMETER                                  | R     | RISER / RADIUS                      |
| DBL    | DOUBLE                                    | RB    | RESILIENT BASE                      |
| DF     | DRINKING FOUNTAIN                         | RD    | ROOF DRAIN                          |
| DL     | DEAD LOAD                                 | RENF  | REINFORCED                          |
| DR     | DISPLAY RAIL                              | REQD  | REQUIRED                            |
| DTL    | DETAIL                                    | RT    | RIGHT                               |
| DW     | DISHWASHER                                | RO    | ROUGH OPENING                       |
| DWG    | DRAWING                                   | ROW   | RIGHT OF WAY                        |
| EA     | EACH                                      | RR    | RUB-RAIL                            |
| EF     | EXHAUST FAN / EACH FACE                   | RTU   | ROOF TOP UNIT (HVAC)                |
| EJ     | EXPANSION JOINT                           | SACT  | SUSPENDED ACOUSTIC TILE CEILING     |
| EL     | ELEVATION                                 | SC    | SOLID CORE                          |
| ELEC   | ELECTRICAL                                | SF    | SQUARE FOOT / SUPPLY FAN            |
| ESP    | EDGE OF PAVEMENT                          | SFRM  | SPRAYED FIRE-RESISTIVE MATERIAL     |
| EPDM   | ETHYLENE PROPYLENE DIENE MONOMER          | SHT   | SHEET                               |
| EQ     | EQUAL                                     | SK    | SIMILAR                             |
| EW     | EACH WAY                                  | SN    | SANITARY NAPKIN (DISPENSER)         |
| EMC    | ELECTRIC WATER COOLER                     | SS    | SPECIAL                             |
| EXST   | EXISTING                                  | STA   | STATION                             |
| EXP    | EXPANSION                                 | STL   | STEEL                               |
| EXT    | EXTERIOR                                  | STRUC | STRUCTURAL                          |
| FB     | FLAT BAR                                  | T     | TREAD                               |
| FBO    | FURNISHED BY OTHERS                       | TB    | TRICKBOARD                          |
| FCO    | FLOOR CLEAN-OUT                           | T&B   | TOP AND BOTTOM                      |
| FD     | FLOOR DRAIN                               | TBM   | TEMPORARY BENCHMARK                 |
| FE     | FIRE EXTINGUISHER                         | TCE   | TOP CORNER EXTENSION                |
| FEC    | FIRE EXTINGUISHER CABINET                 | TI    | TOP OF                              |
| FF     | FINISH FLOOR / FAR FACE                   | TO    | TOP OF CONCRETE                     |
| FFE    | FINISH FLOOR ELEVATION                    | TOC   | TOP OF FOOTING                      |
| FO     | FRAMED OPENING                            | TOF   | TOP OF FINISHING                    |
| FRP    | FIBER REINFORCED PLASTIC                  | TOM   | TOP OF MASONRY                      |
| FS     | FAR SIDE                                  | TOP   | TOP OF PIER                         |
| FTG    | FOOTING                                   | TOS   | TOP OF STEEL                        |
|        |                                           | TOW   | TOP OF WALL                         |
| GA     | GALVE                                     | TP    | TOILET PAPER (DISPENSER) / TEST PIT |
| GALV   | GALVANIZED                                | TS    | TUBE STEEL                          |
| GB     | GRAB BAR                                  | TYP   | TYPICAL                             |
| GC     | GENERAL CONTRACTOR                        | UH    | UNIT HEATER                         |
| GDT    | GYP-SUM DROP-IN TILE                      | UNO   | UNLESS NOTED OTHERWISE              |
| GV     | GRAVITY VENT                              | V     | VENT PIPE / VERTICAL                |
| GWB    | GYP-SUM WALL BOARD                        | VB    | VAPOR BARRIER                       |
|        |                                           | VCT   | VINYL COMPOSITION TILE              |
| HC     | HORIZONTAL                                | VERT  | VERTICAL                            |
| HORIZ  | HORIZONTAL                                | VTR   | VENT THROUGH THE ROOF               |
| HM     | HOLLOW METAL                              | W     | WITH                                |
| HRI    | HEAT RECOVERY UNIT                        | WC    | WATER CLOSET                        |
| HV     | HEATING AND VENTILATING                   | WF    | WIDE FLANGE                         |
| HVAC   | HEATING, VENTILATING AND AIR CONDITIONING | WH    | WATER HEATER                        |
|        |                                           | W/O   | WITHOUT                             |
| I      | INCLUDED ANGLE                            | WP    | WORKING POINT                       |
| ID     | INSIDE DIAMETER                           | WS    | WEB STIFFENER                       |
| IF     | INSIDE FACE                               | WVF   | WELDED WIRE FABRIC                  |
| II     | ISOLATION JOINT                           |       |                                     |
| IMP    | IMPACT RESISTANT                          |       |                                     |
| INS    | INSULATED                                 |       |                                     |
| INV    | INVERT                                    |       |                                     |
| IS     | JOINT SUBSTITUTE                          |       |                                     |
| K      | KIPS                                      |       |                                     |

**SYMBOL LEGEND:**



**APPLICABLE CODES:**

- GENERAL:**
- INTERNATIONAL BUILDING CODE (IBC); 2009 EDITION
  - NATIONAL FIRE PROTECTION ASSOCIATION (NFPA101); 2010 EDITION
  - ACCESSIBILITY GUIDELINES FOR BUILDINGS AND FACILITIES (ADA); 1994 EDITION
  - AIA GUIDELINES FOR DESIGN AND CONSTRUCTION OF HOSPITAL AND HEALTHCARE FACILITIES; 2006 EDITION
- PLUMBING:**
- NFPA 13: INSTALLATION OF SPRINKLER SYSTEMS; 2002
  - STATE OF MAINE INTERNAL PLUMBING CODE; 2005
- HVAC:**
- MECHANICAL CODE: INTERNATIONAL MECHANICAL CODE; 2003 EDITION
  - NFPA 99 HEALTHCARE FACILITIES; 2002 EDITION
  - ENERGY CODE: ASHRAE 90.1; 2001 EDITION WITH AMENDMENTS
  - ASHRAE 62; 2001 EDITION
  - FIRE AND SMOKE DAMPER INSTALLATION: NFPA 90A AND NFPA 10; 2003 EDITION
  - DUCT MOUNTED SMOKE DETECTORS: NFPA 72 EDITION
- ELECTRICAL:**
- NFPA 70; 2005 EDITION
  - NFPA 72; 2003 EDITION
  - IESNA LIGHTING HANDBOOK REFERENCE AND APPLICATION, 9th EDITION

**GENERAL NOTES:**

- FIELD VERIFY ALL DIMENSIONS AND LAYOUT PRIOR TO PROCEEDING WITH WORK. NOTIFY ARCHITECT IN WRITING OF ANY DISCREPANCIES OR INCONSISTENCIES. FAILURE TO REPORT ANY DISCREPANCIES WITHIN THESE CONSTRUCTION DOCUMENTS TO THE ARCHITECT WILL NOT BE GROUNDS FOR ADDITIONAL COST OR CHANGE ORDERS.
- THE CONTRACTOR SHALL BE RESPONSIBLE FOR PROVIDING ALL MATERIALS (UNLESS NOTED OTHERWISE), AND WORKMANSHIP IN ACCORDANCE WITH FEDERAL, STATE, CITY, AND LOCAL BUILDING CODES AND THEIR REQUIREMENTS.
- CONTRACTOR TO CONFIRM EXISTING WALL RATINGS.
- THE CONTRACTOR AND ALL TRADES SHALL NOTE REQUIREMENTS OF "GENERAL NOTES" ON ALL SHEETS.
- EACH TRADE TO PROVIDE SMOKE OR FIRE SEALANT AT PENETRATIONS AS REQUIRED FOR WALL TYPE. ALL SEALANT, FIRE STOPPING, AND SMOKE STOPPING ASSEMBLIES SHALL BE U.L. RATED.
- DIMENSIONS ARE FACE OF CONCRETE, FACE OF MASONRY, FACE OF EXISTING PARTITION AND CENTERLINE OF STUD PARTITIONS, UNLESS INDICATED OTHERWISE.
- REFER TO ALL CONSTRUCTION DOCUMENTS FOR REQUIREMENTS WHICH MAY AFFECT THE WORK IN ANOTHER DISCIPLINE AND COORDINATE WORK.
- REFER TO DETAILS FOR ADDITIONAL DIMENSIONAL INFORMATION.
- DOOR JAMBS SHALL BE LOCATED 6" FROM CORNER IN STUD PARTITIONS AND 8" FROM CORNER IN MASONRY PARTITIONS UNLESS INDICATED OTHERWISE.
- PROVIDE BLOCKING IN WALLS AS NECESSARY WHERE CASEWORK, SHELVES, HANDRAILS, AND MISC. EQUIPMENT ARE LOCATED.
- PATCH ALL HOLES, WALLS AND CRACKS IN ROOMS TO RECEIVE NEW PAINT.
- ANY EXISTING WALLS THAT ARE FOUND TO BE UNBRACED OR DO NOT EXTEND TO BOTTOM OF DECK/SLAB SHOULD BE BRACED BACK TO STRUCTURE. WHEN PRIVACY IS AN ISSUE EXTEND WALL TO BOTTOM OF DECK/SLAB.
- DO NOT SCALE DRAWINGS.
- "PROVIDE" MEANS "FURNISH AND INSTALL."



**MAINE MEDICAL CENTER**

BRAMHALL CAMPUS: PORTLAND, MAINE

**ANGIO BI-PLANE RENOVATIONS**

| Sheet Number | Sheet Name                                  |
|--------------|---------------------------------------------|
| G-001        | GENERAL INFORMATION                         |
| A-100        | BASEMENT DEMOLITION AND FLOOR PLANS         |
| A-101        | BASEMENT LAYOUT AND REFLECTED CEILING PLANS |
| A-200        | INTERIOR ELEVATIONS AND DETAILS             |
| A-600        | INTERIOR FINISHES, SCHEDULES & DETAILS      |

| Sheet Number | Sheet Name                         |
|--------------|------------------------------------|
| SF-101       | ANGIO FOUNDATION AND FRAMING PLANS |
| SF-501       | STRUCTURAL DETAILS                 |

| Sheet Number | Sheet Name                |
|--------------|---------------------------|
| M-001        | LEGEND AND ABBREVIATIONS  |
| M-002        | SPECIFICATIONS            |
| MH101        | BASEMENT DUCTWORK PLANS   |
| MP101        | BASEMENT HVAC PIPING PLAN |
| M-501        | MECHANICAL DETAILS        |

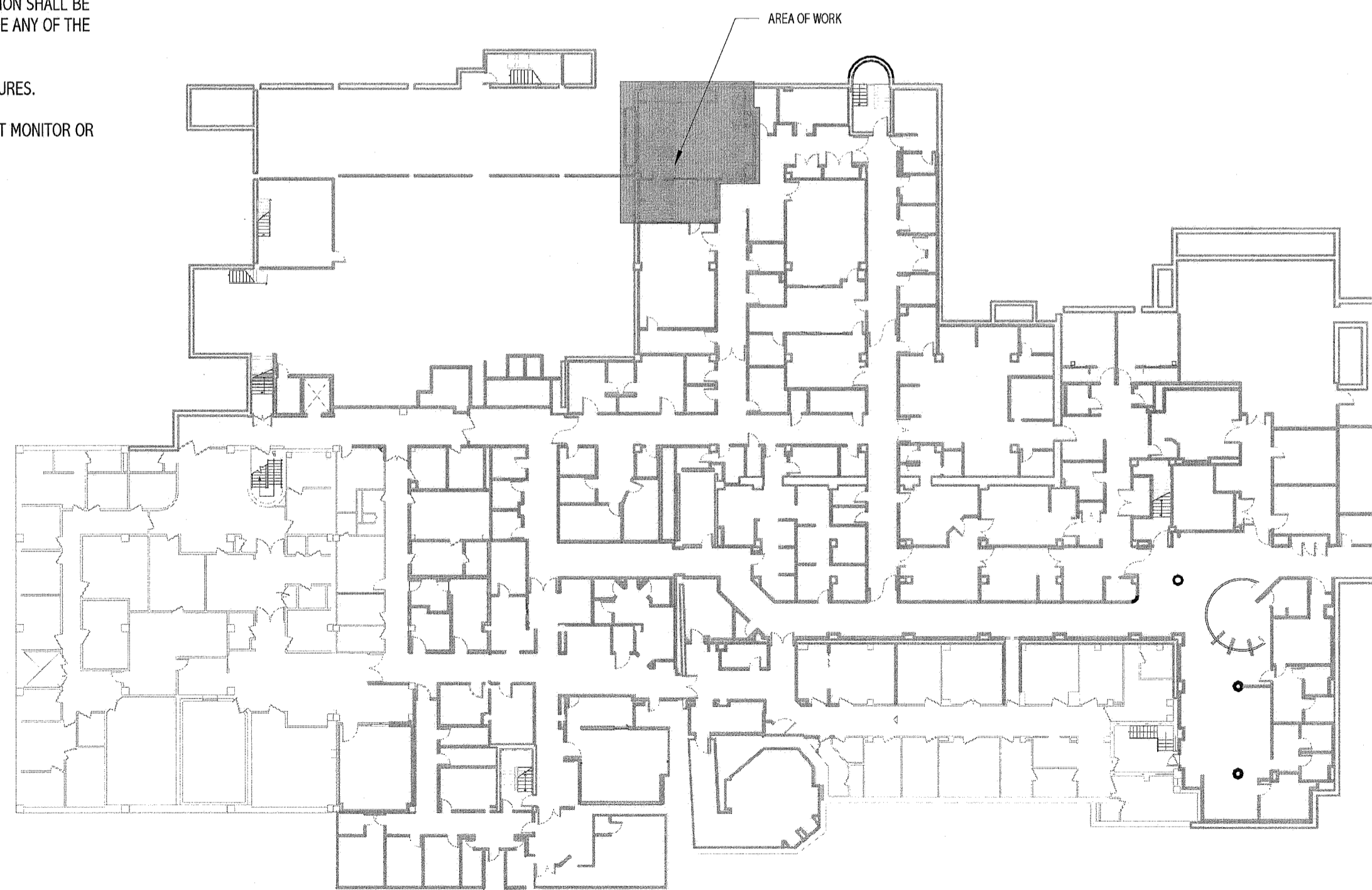
| Sheet Number | Sheet Name               |
|--------------|--------------------------|
| P-001        | LEGEND AND ABBREVIATIONS |
| PL101        | MED GAS PIPING PLANS     |

| Sheet Number | Sheet Name                                                      |
|--------------|-----------------------------------------------------------------|
| E-001        | LEGEND AND GENERAL NOTES                                        |
| E-002        | SPECIFICATIONS SHEET 1                                          |
| E-003        | SPECIFICATIONS SHEET 2                                          |
| ED101        | ELECTRICAL BASEMENT DEMOLITION PLAN                             |
| EL101        | BASEMENT LIGHTING PLAN                                          |
| EP101        | BASEMENT POWER PLAN                                             |
| EP401        | ANGIO ELECTRICAL DEVICE, DUCT & DIMENSION PLAN - BASEMENT FLOOR |
| EP402        | ANGIO ELECTRICAL CONDUIT & CABLE PLAN - BASEMENT FLOOR          |
| EY402        | BASEMENT SYSTEMS PLAN                                           |
| E-601        | PANEL SCHEDULES & ONE-LINE DIAGRAM                              |

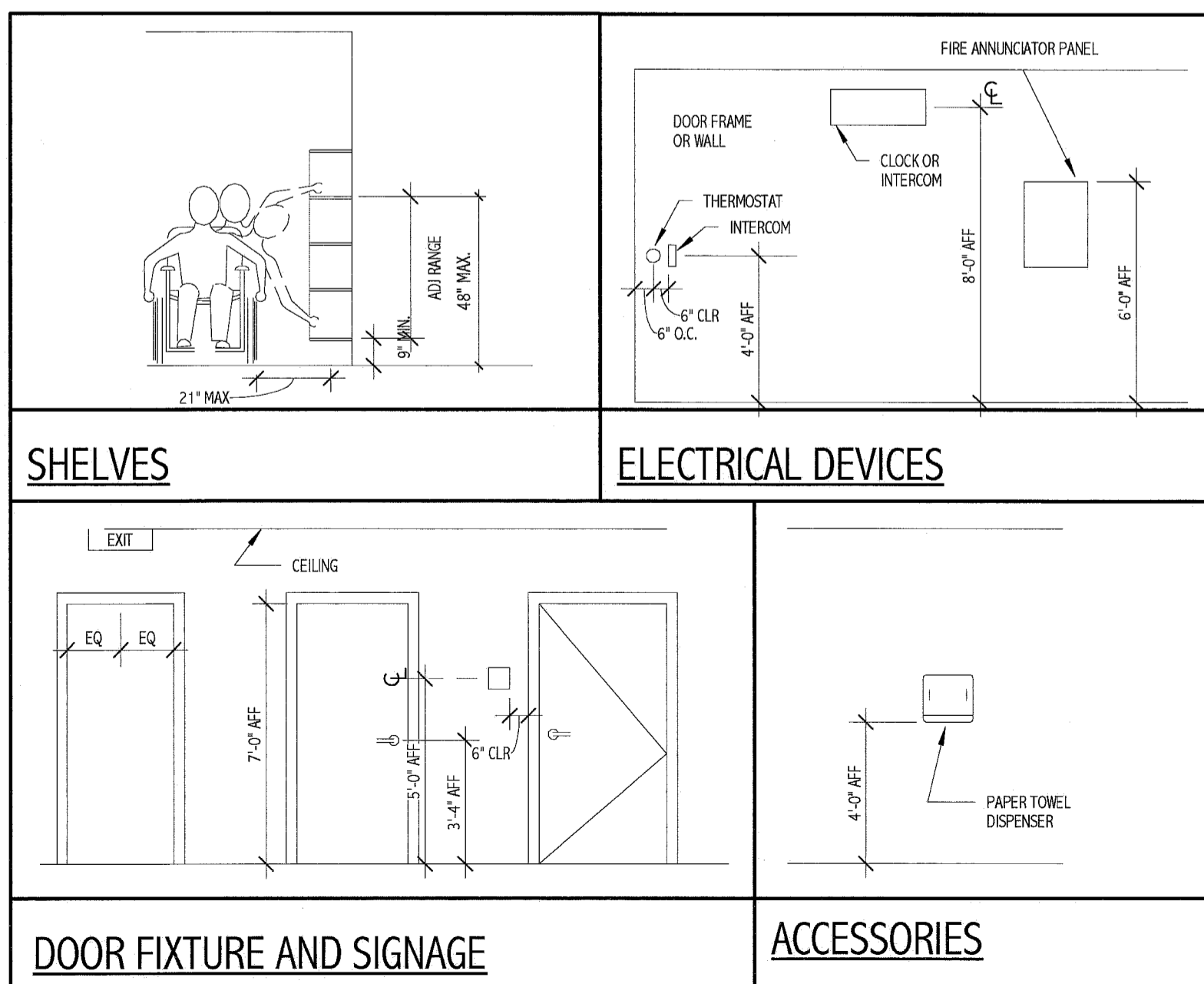
| Sheet Number | Sheet Name                        |
|--------------|-----------------------------------|
| Q-001        | VENDOR EQUIPMENT DRAWINGS SHEET 1 |
| Q-002        | VENDOR EQUIPMENT DRAWINGS SHEET 2 |
| Q-003        | VENDOR EQUIPMENT DRAWINGS SHEET 3 |
| Q-004        | VENDOR EQUIPMENT DRAWINGS SHEET 4 |

**LIFE SAFETY NOTES:**

- EGRESS LIGHTING SHALL BE PROVIDED IN ALL CORRIDORS AND PASSAGeways LEADING TO EXITS. A MINIMUM AVERAGE OF 1 FOOT-CANDLE IS TO BE PROVIDED. THE SOURCE OF ILLUMINATION SHALL BE PROVIDED FOR 90 MINUTES AND CAN BE ANY OF THE FOLLOWING:
  - GENERATOR BACKED-UP LIGHT FIXTURES.
  - BATTERY BALLAST LIGHT FIXTURES.
  - INDIVIDUAL BATTERY UNIT WITH UNIT MONITOR OR REMOTE LAMPS.



1 BASEMENT LEVEL: BRAMHALL CAMPUS  
1/32" = 1'-0"



144 Fox Street, P.O. Box 618  
Portland, Maine 04104  
Tel: (207) 772-3866  
Fax: (207) 772-1070  
www.mmmc.com

ARCHITECTURE  
ENGINEERING  
PLANNING  
INTERIOR DESIGN  
COMMISSIONING

**SMART**

LICENSED ARCHITECT  
DEREK J. VEILLEUX  
No. 10000  
STATE OF MAINE  
6.14.11

PROJECT NORTH

Bramhall Radiology  
ANGIO BI-PLANE RENOVATIONS  
PORTLAND, ME

ISSUED FOR CONSTRUCTION  
06.14.11

| NO.                                                    | DATE                                      | DESCRIPTION             |
|--------------------------------------------------------|-------------------------------------------|-------------------------|
| 01 <td>06.14.11 <td>ISSUED FOR CONSTRUCTION</td> </td> | 06.14.11 <td>ISSUED FOR CONSTRUCTION</td> | ISSUED FOR CONSTRUCTION |

GRAPHIC SCALE:  
0" 1"

SCALE: As Indicated

PROJECT MANAGER: DVV  
DRAWN BY: ART  
DATE OF RECORD: DVV  
PROJECT NO: 11011  
DATE: 06.14.11

SHEET TITLE:  
**GENERAL INFORMATION**

SHEET No.  
**G-001**