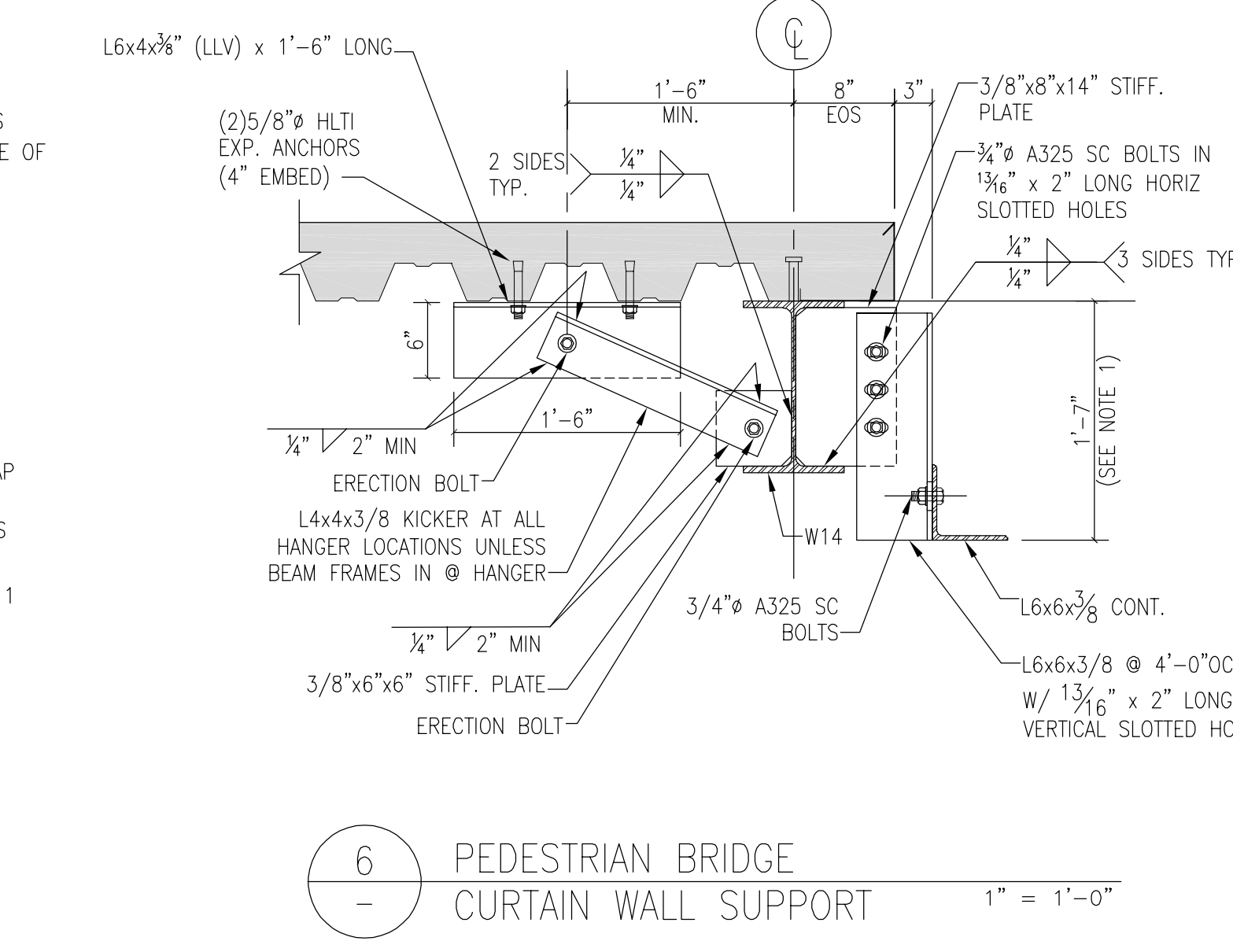
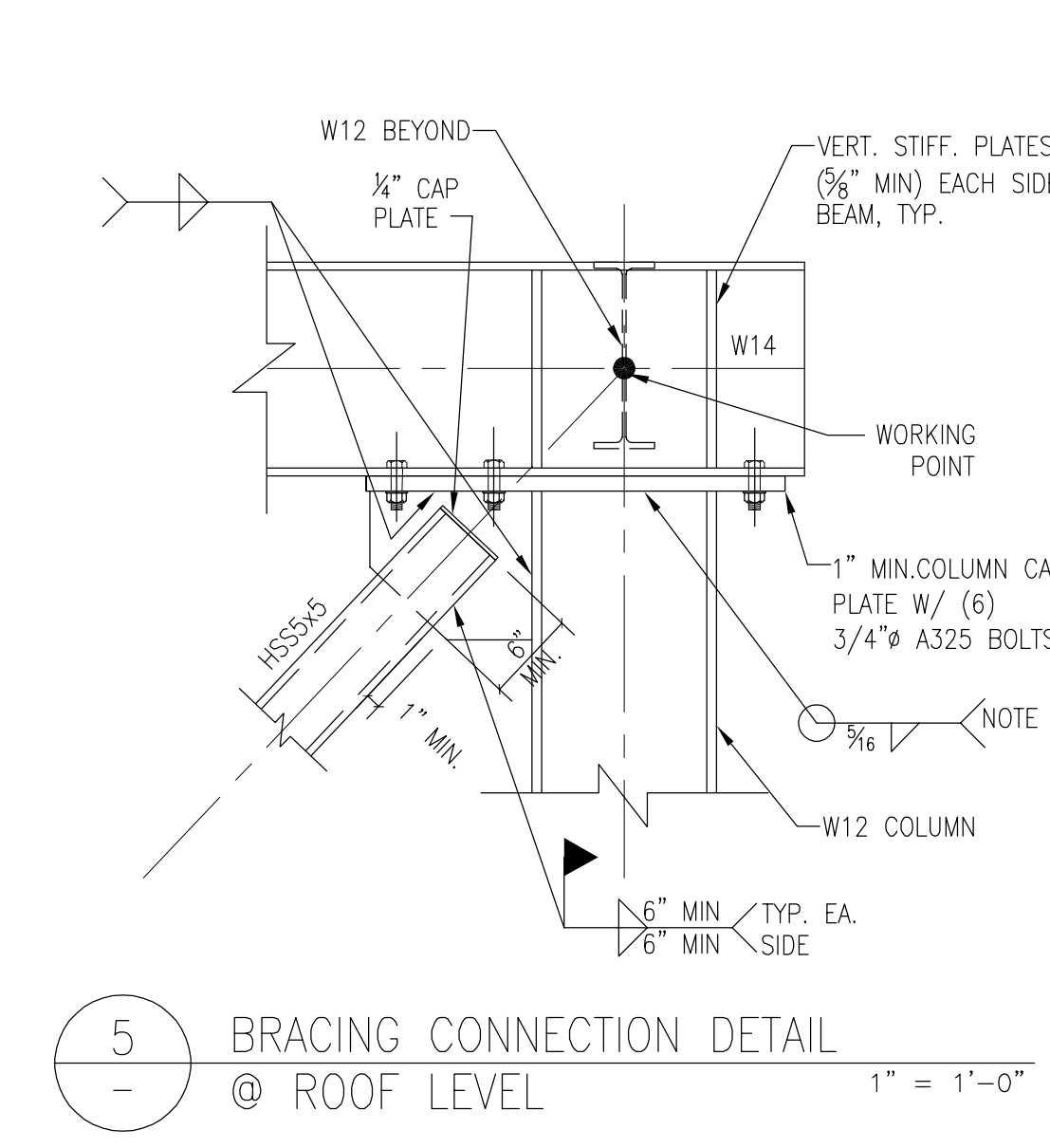
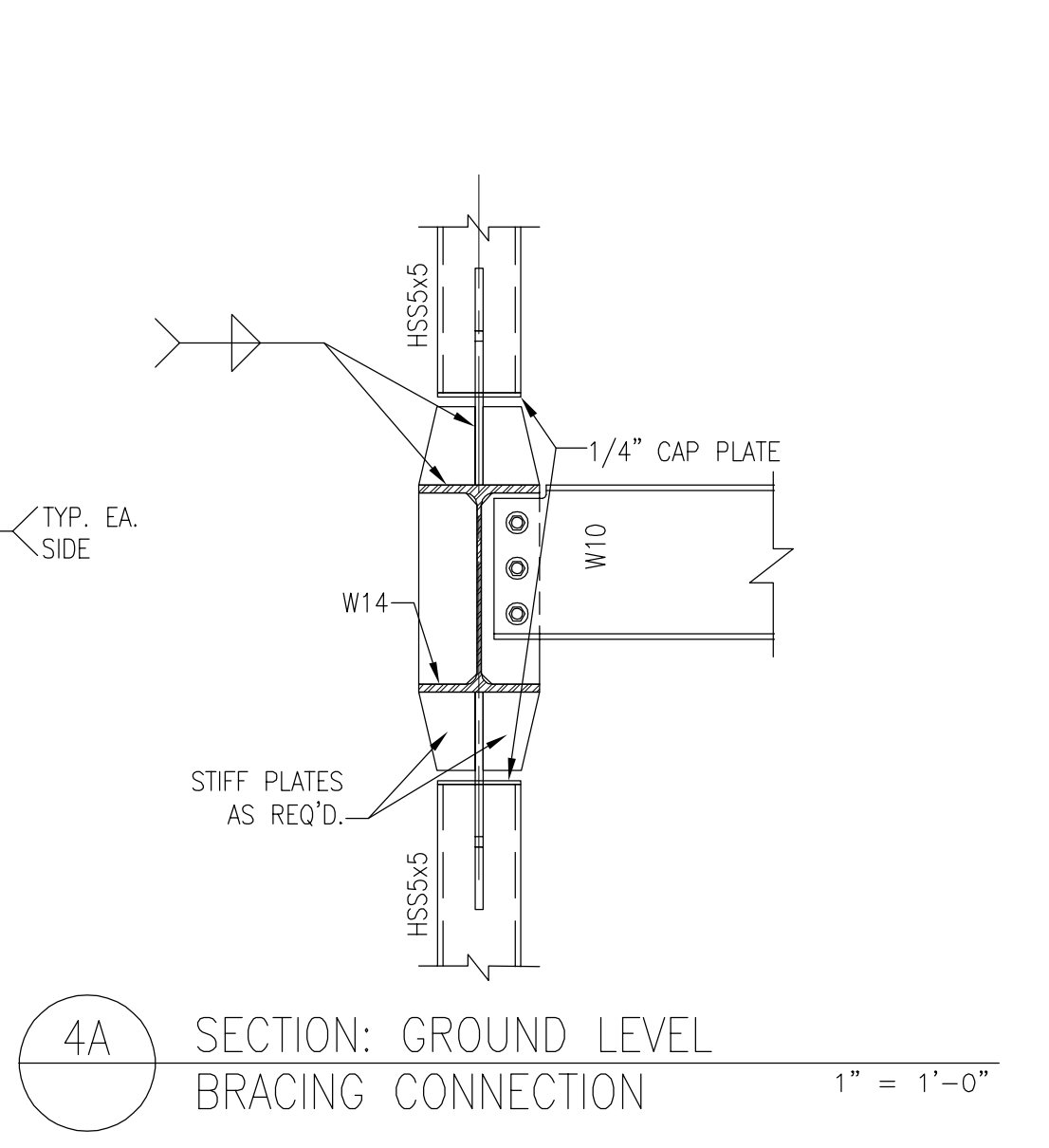
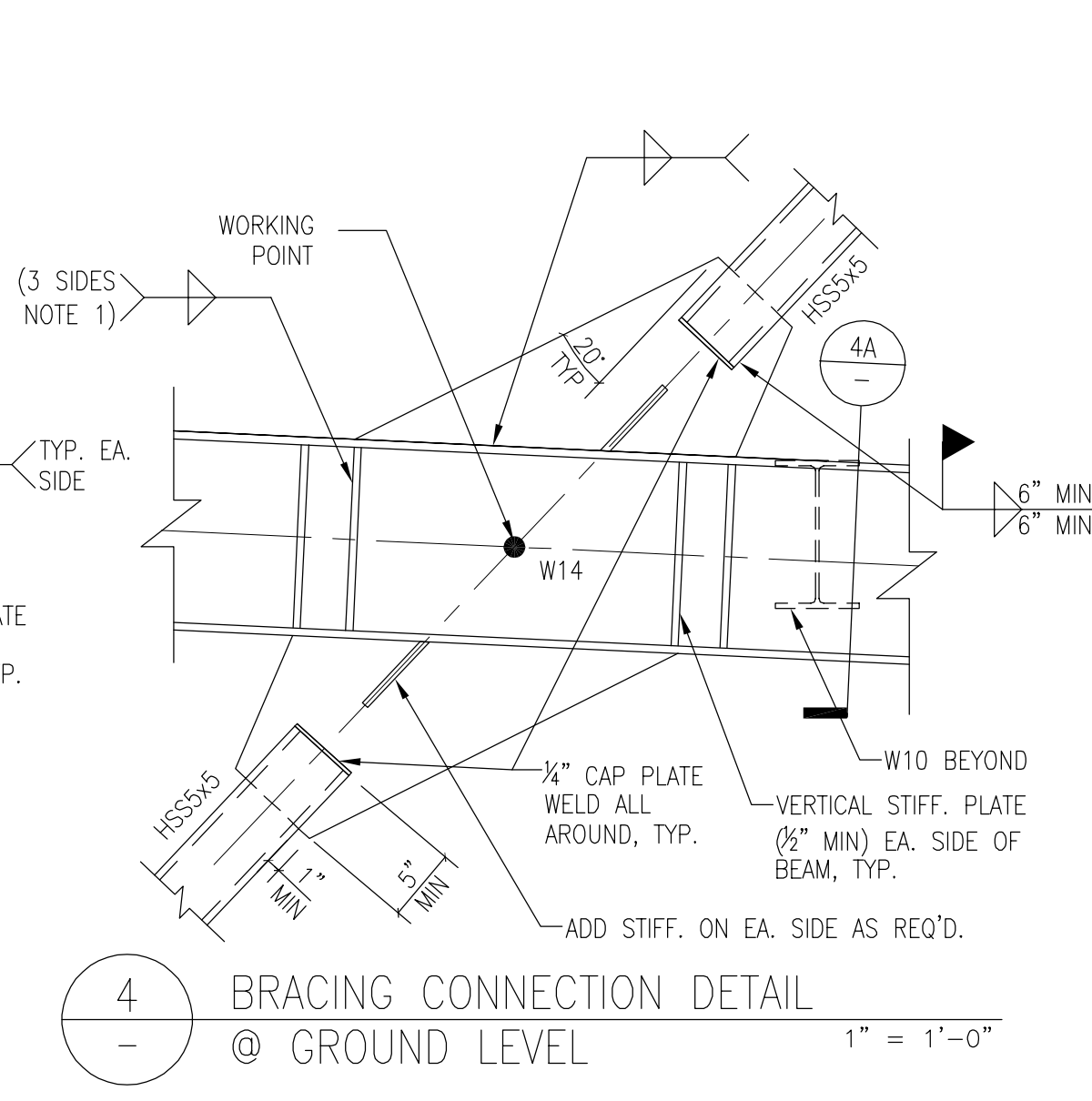
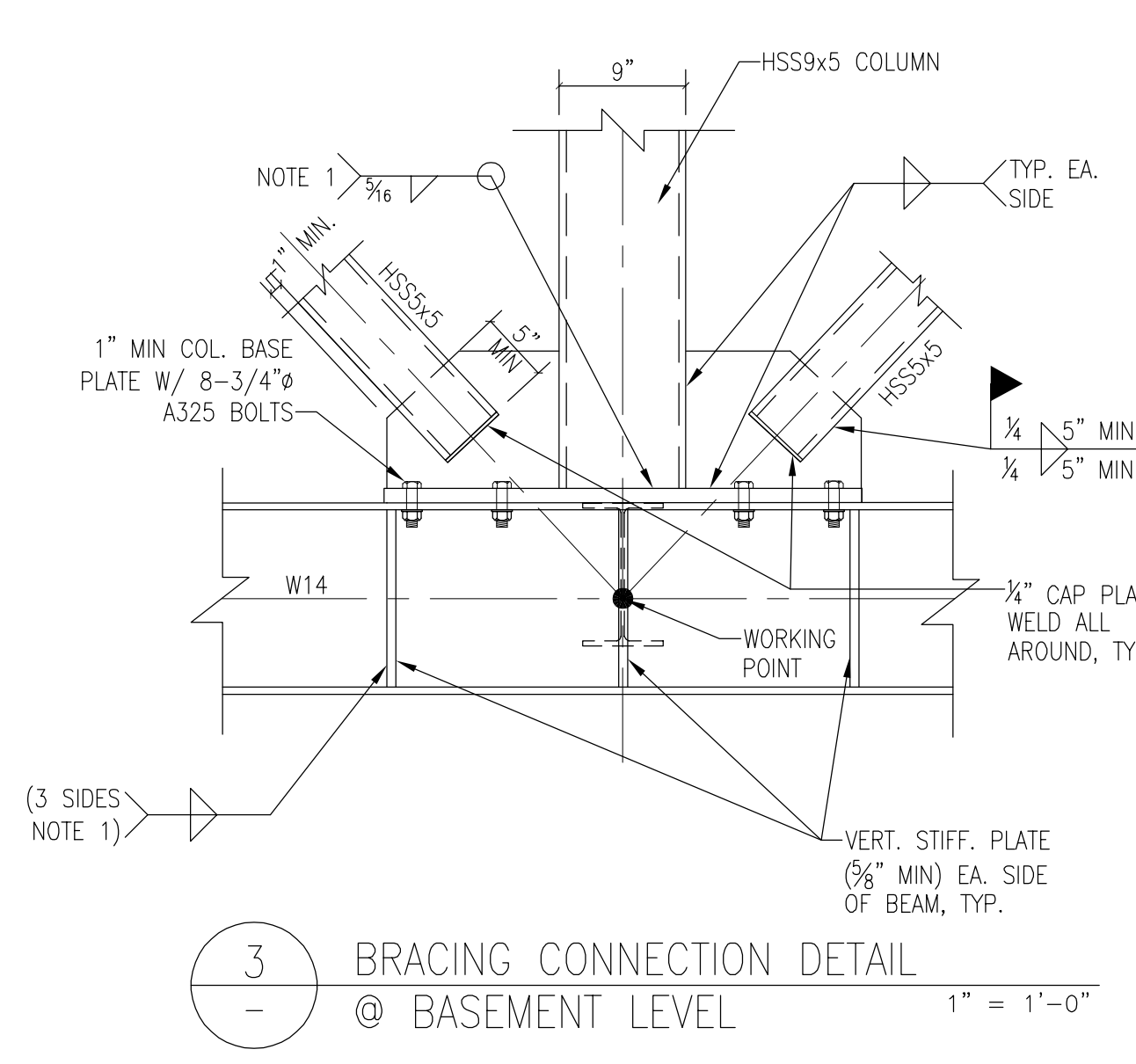
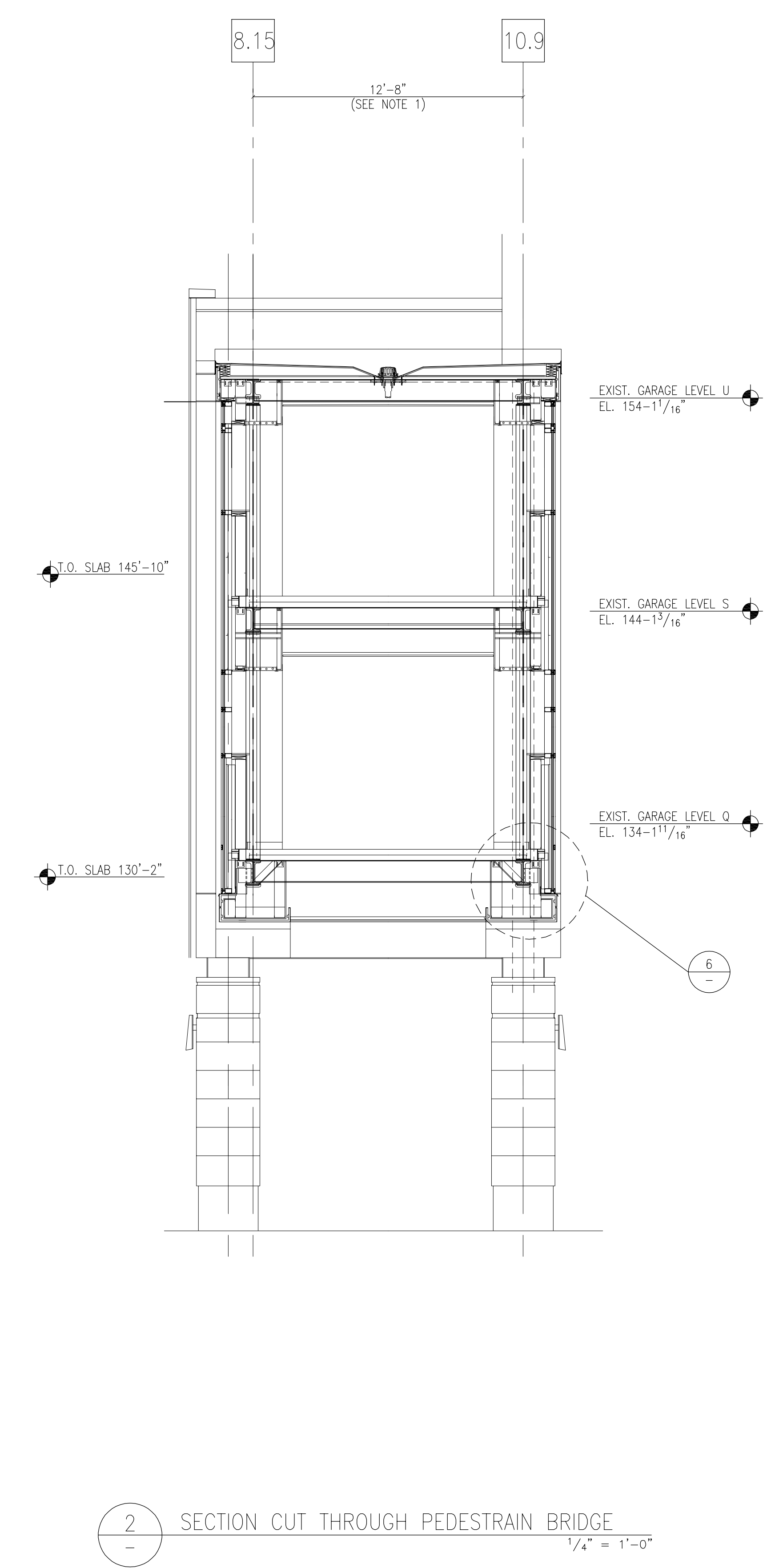
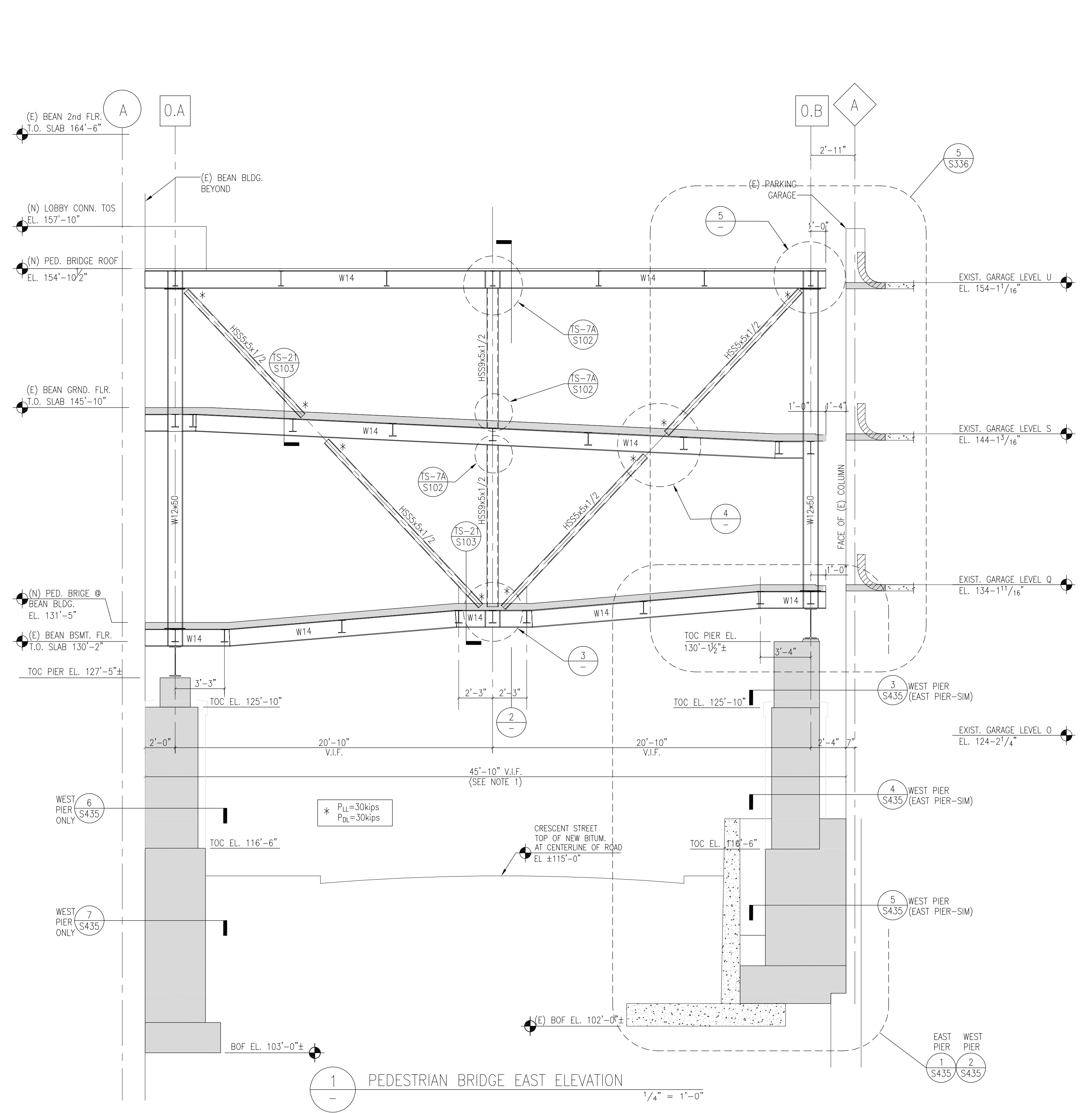


General Notes:
 1. ALL DIMENSIONS SHOULD BE COORDINATED WITH ARCH. DWGS. AND FIELD VERIFIED DIMENSIONS PRIOR TO SUBMITTING SHOP DRAWINGS FOR REVIEW AND APPROVAL.



- NOTES:**
1. DETAILS SHOW DESIRED CONFIGURATION AND CONNECTION MATERIAL DETAILS TO BE INCORPORATED IN FABRICATOR'S DESIGN. FABRICATOR'S DESIGN AND DETAILING TO FOLLOW APPLICABLE STANDARDS, PROJECT PLANS AND SPECIFICATIONS, AND DESIGN FORCES INDICATED ON THE DRAWINGS.
 2. PROVIDE DECK SUPPORT ANGLES, SHIM PLATES, AND FILLER PLATES AS REQUIRED. THESE ITEMS ARE NOT SHOWN FOR CLARITY.
 3. ADD FITTED STIFFENERS (1/2" THICK MIN.) BOTH SIDES OF COLUMN WHERE THERE ARE BRACES ON BOTH SIDES OF COLUMN AND THERE IS A TRANSFER FORCE BETWEEN THEM INDICATED ON THE DRAWINGS.
 4. BOLTS AT CONNECTION TO COLUMN; A325, MINIMUM DIAMETER = 3/4", SLIP CRITICAL ON OVERSIZE HOLES, UON.
 5. ADD STIFFENERS ON EACH SIDE OF GUSSET IF AND AS REQUIRED BY WHITMORE SECTION CALCULATIONS. RECONFIGURE CONNECTIONS TO COLUMN AS REQUIRED BY STIFFENERS.
 6. DO NOT ENCRUSH ON HINGE LINE WITH ANY CONNECTION MATERIAL.
 7. CONNECTIONS TO COLUMN WEBS HAVE SIMILAR CONFIGURATIONS. REINFORCE COLUMN WEB AS REQUIRED BY THE CONNECTION FORCES.
 8. GUSSET PLATES SHOWN WITH VERTICAL AND HORIZONTAL EDGES, ANGLED CUTS AT FABRICATOR'S DISCRETION.

SGH
Simpson Gumpertz & Heger Inc.
 Consulting Engineers

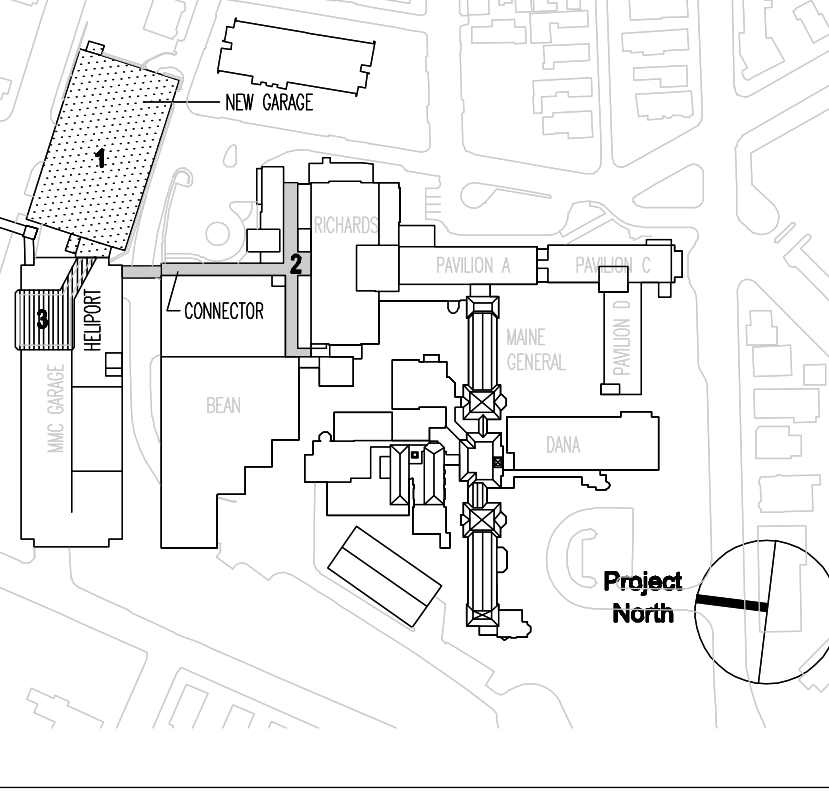
Boston, MA 41 Bayon Street Telephone: (781) 907 9000
 Building 1, Suite 500 Fax: (781) 907 9009
 Waltham, MA 02453

San Francisco, CA The Landmark at One Market Telephone: (415) 498 3700
 Suite 600 Fax: (415) 498 3550
 San Francisco, CA 94105

Washington, DC 1885 Pileard Drive Telephone: (301) 417 0999
 Suite 225 Fax: (301) 417 9825
 Rockville, MD 20850

MARK	ISSUE DATE	DESCRIPTION

PERMIT: 09/16/04 PERMIT SET
 BID: 08/26/04 BID SET
 Issue Log



TRO
ARCHITECTURAL PLANNING ENGINEERING INTERIOR DESIGN
 The Ritchie Organization
 80 Bridge Street
 Newton, MA 02458-1154
 617-899-9400

Maine Medical Center
 Pkg F - Garage / Vault / Conn / Heliport
 Portland, ME MMC Project No. 21845

Drawing Title:
PEDESTRIAN BRIDGE EAST ELEVATION

0' 4' 8' 16' 32'

Commission No. 4678	Date Issued 10/08/06/06/03
Scale 1/8"=1'-0"	Sheet Number
Drawn By SWW	PKG-F
Approved By JHT/JJZ	S335
Filename S335	

Copyright © 2004 The Ritchie Organization