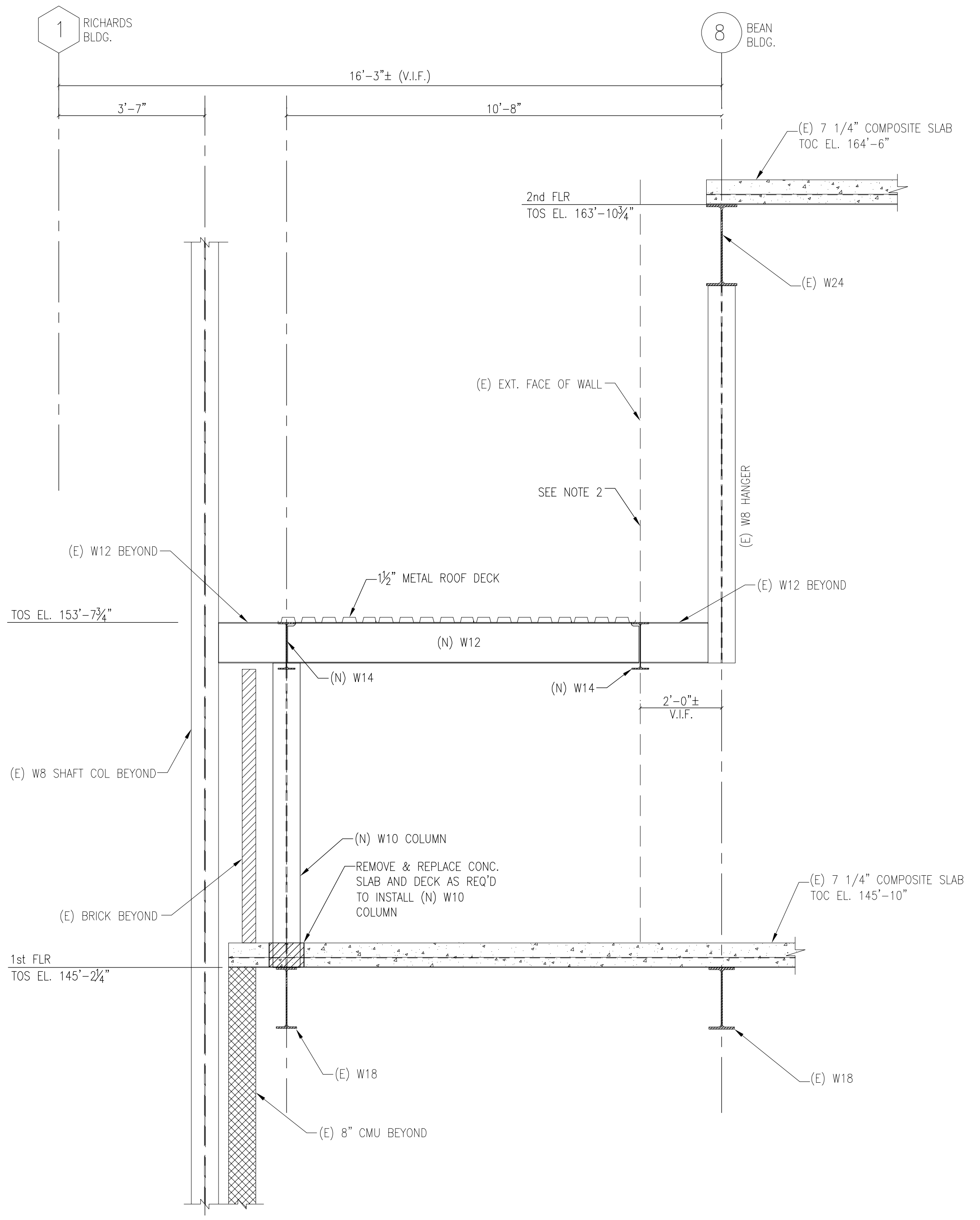
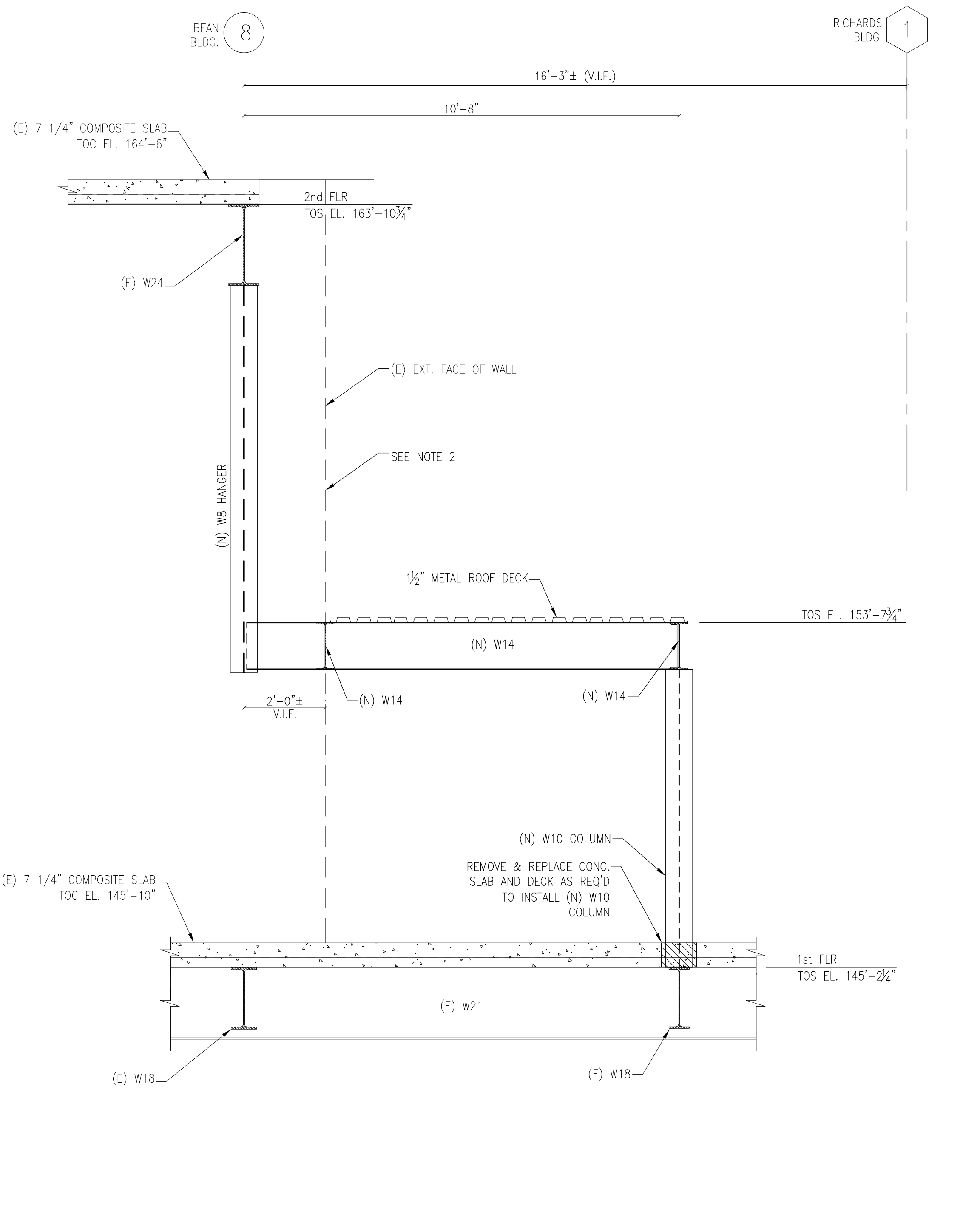


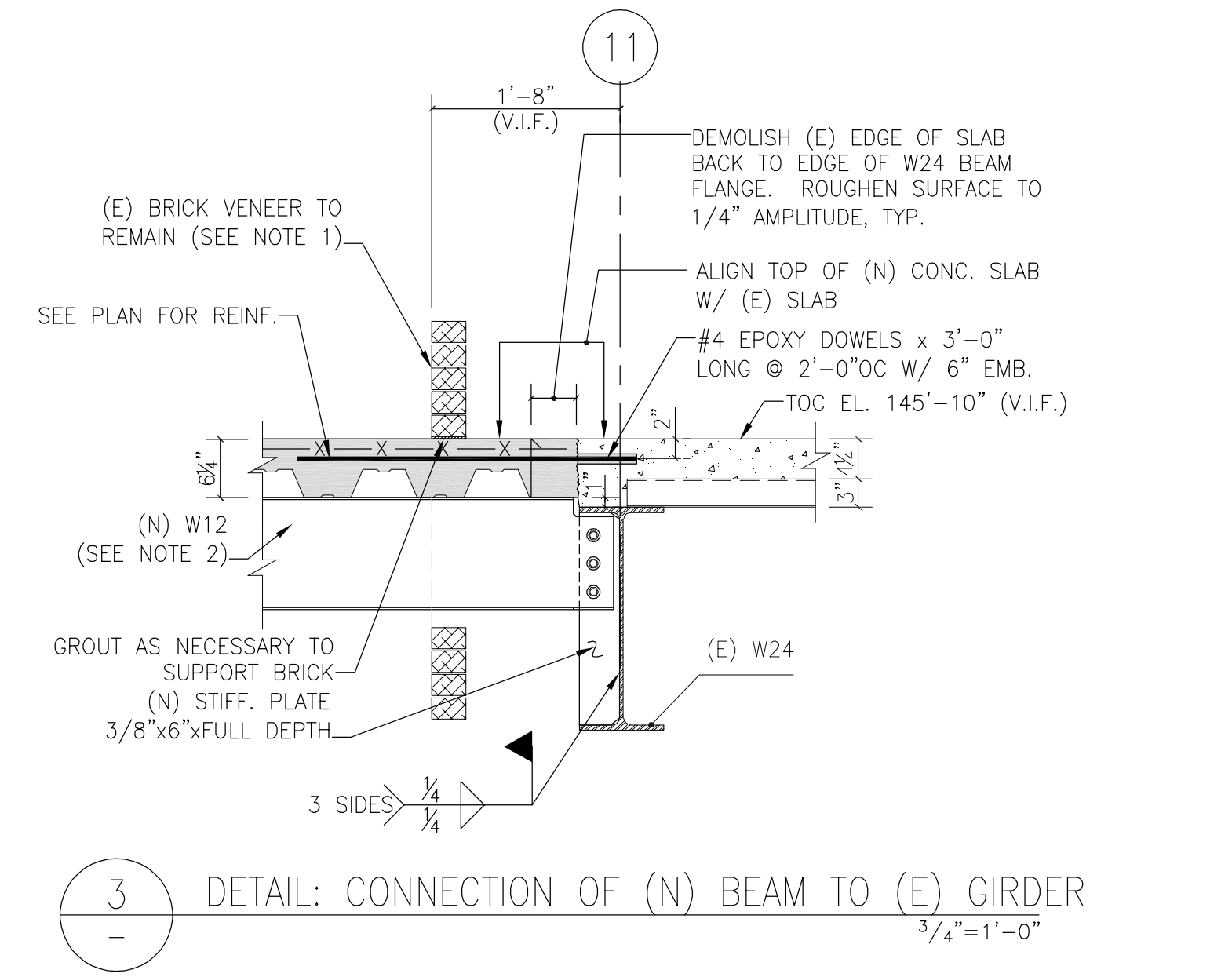
- General Notes:
- EXISTING BRICK VENEER TO BE TEMPORARILY SHORED DURING INSTALLATION OF NEW CONCRETE SLAB. CONTRACTOR SHALL BE RESPONSIBLE FOR MEANS & METHODS OF TEMP. SHORING. AFTER SLAB IS CAST & CURED, BRICK VENEER SHALL BEAR ON NEW CONCRETE SLAB.
  - DEMOLISH EXISTING EXTERIOR WALL CONSTRUCTION AS REQUIRED FOR INSTALLATION OF NEW WIDE FLANGE FLOOR BEAMS. SEE ARCH. DRAWINGS FOR DETAILS OF REPLACING DEMOLISHED FINISHES, ETC.



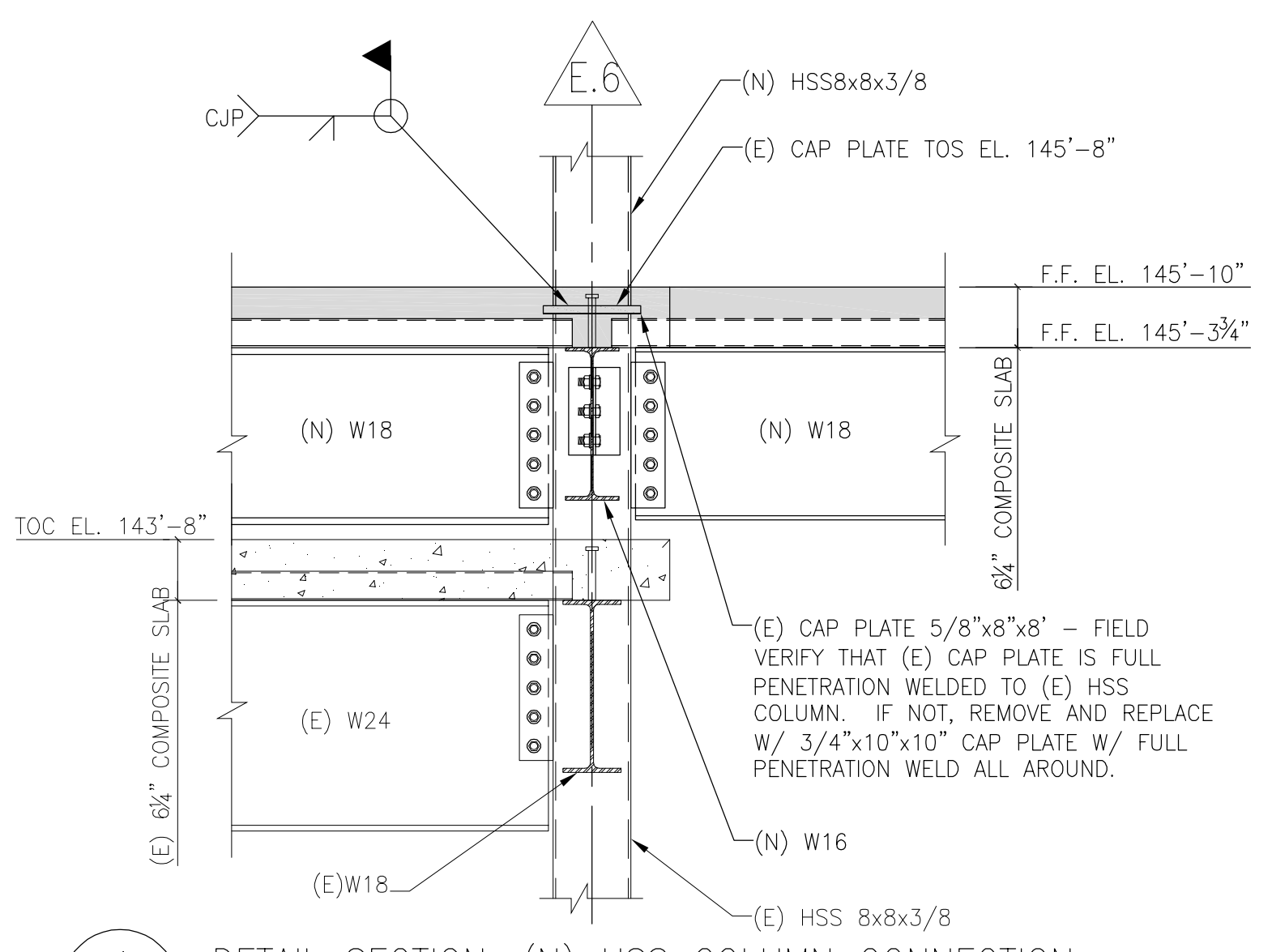
1 SECTION THRU LOBBY CONNECTOR AT ELEVATOR CORE LOOKING SOUTH 1/2" = 1'-0"



2 SECTION THRU LOBBY CONNECTOR AT ELEVATOR CORE LOOKING NORTH 1/2" = 1'-0"



3 DETAIL OF CONNECTION OF (N) BEAM TO (E) GIRDER 3/4" = 1'-0"



4 DETAIL SECTION: (N) HSS COLUMN CONNECTION TO (E) HSS COLUMN CAP PLATE 3/4" = 1'-0"

**SGH**  
Simpson Gumpertz & Heger Inc.  
Consulting Engineers

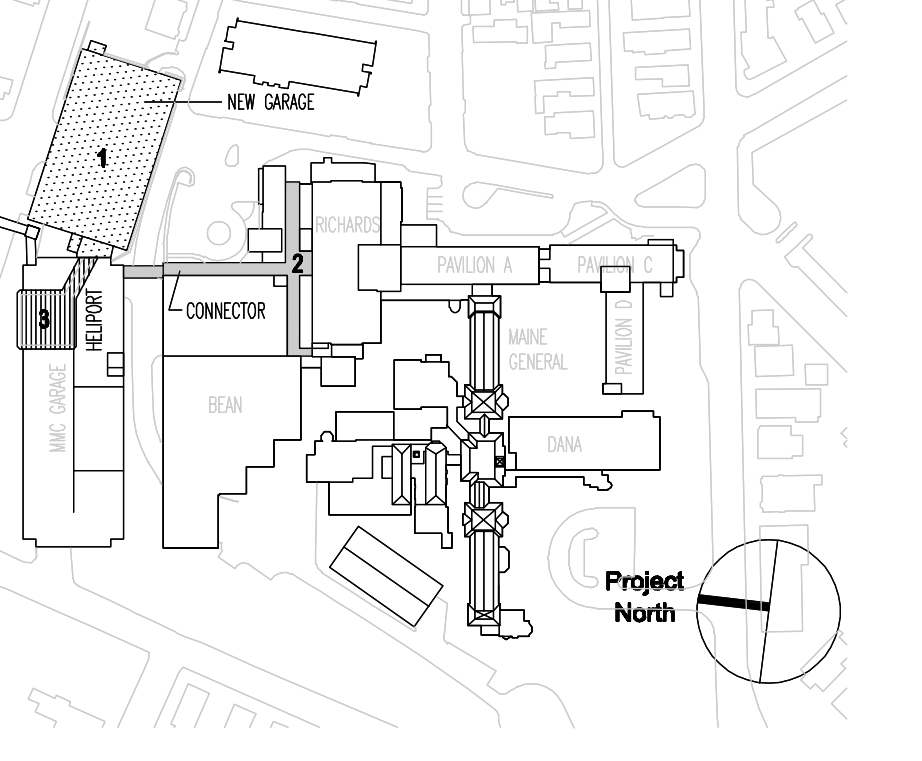
Boston, MA 41 Bayon Street, Suite 600  
Telephone: (781) 907 9000  
Facsimile: (781) 907 9009

San Francisco, CA The Landmark at One Market, Suite 600  
Telephone: (415) 988 3700  
Facsimile: (415) 495 3550

Washington, DC 1355 Plooard Drive, Suite 228  
Telephone: (301) 417 0999  
Facsimile: (301) 417 9825

MARK	ISSUE DATE	DESCRIPTION
PERMIT	09/16/04	PERMIT SET
BID	08/26/04	BID SET

Issue Log



**TRO**  
ARCHITECTURE  
PLANNING  
ENGINEERING  
INTERIOR DESIGN

The Ritchie Organization  
80 Bridge Street  
Newton, MA 02459-1154  
617-869-9400

**Maine Medical Center**  
Pkg F - Garage / Vault / Conn / Heliport  
Portland, ME MMC Project No. 21845

Drawing Title  
**LOBBY CONNECTOR SECTIONS & DETAILS**



Commission No.	4678	Date Issued	08/26/04
Scale	AS NOTED	Sheet Number	PKG-F
Drawn By	SWW		<b>S332</b>
Approved By	JHT/JLL		
Filename	S332		

Copyright © 2004 The Ritchie Organization