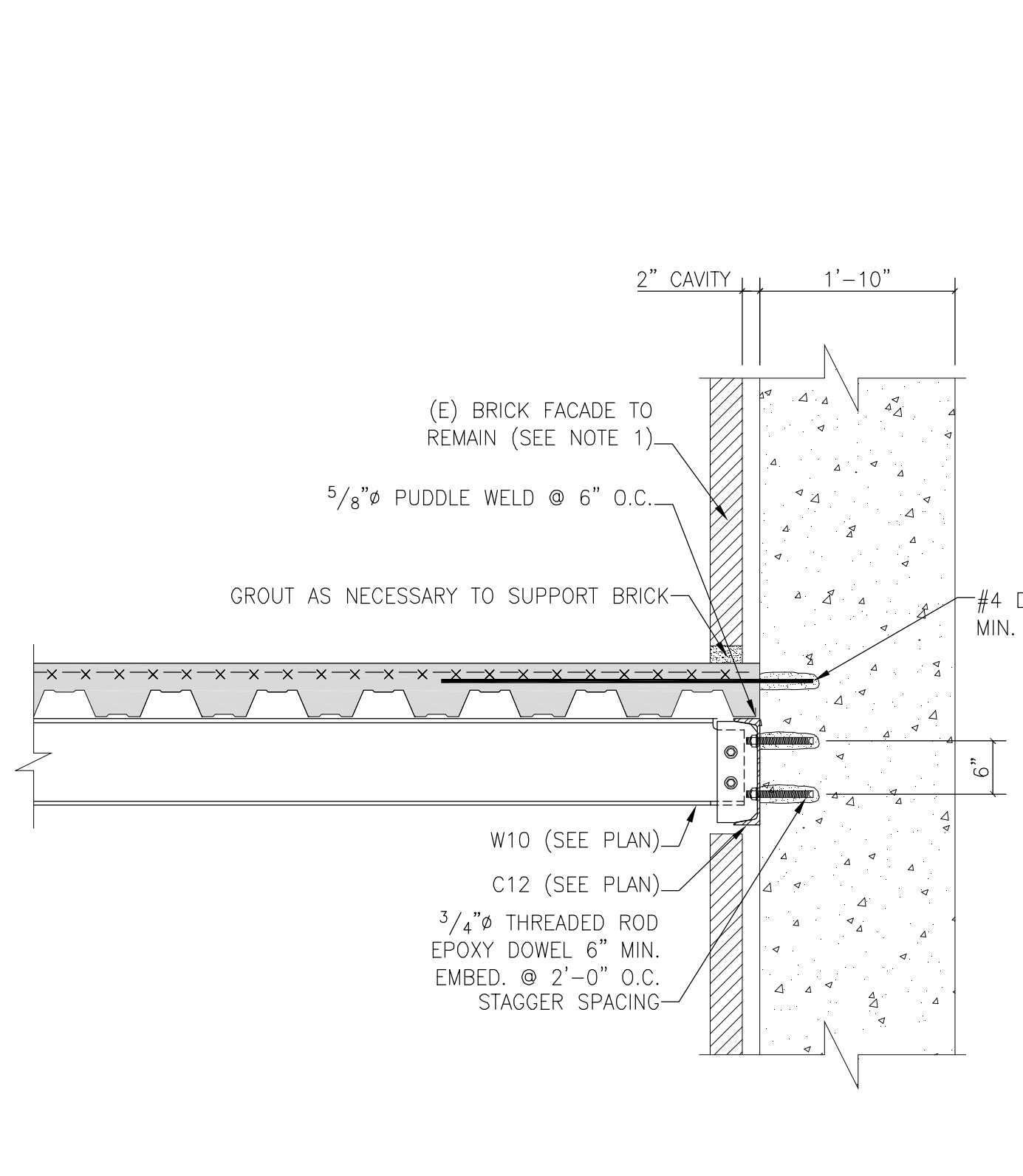
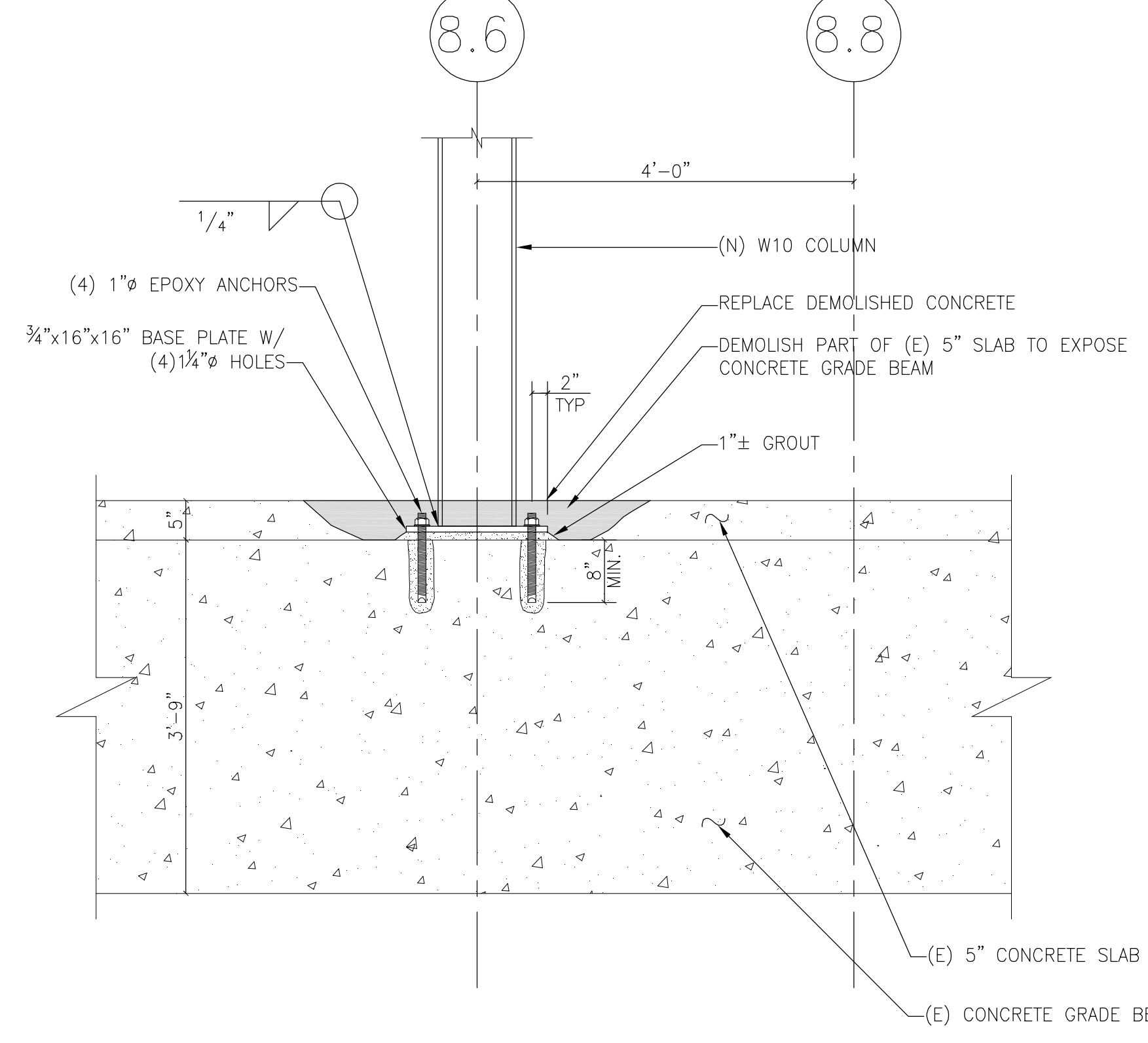


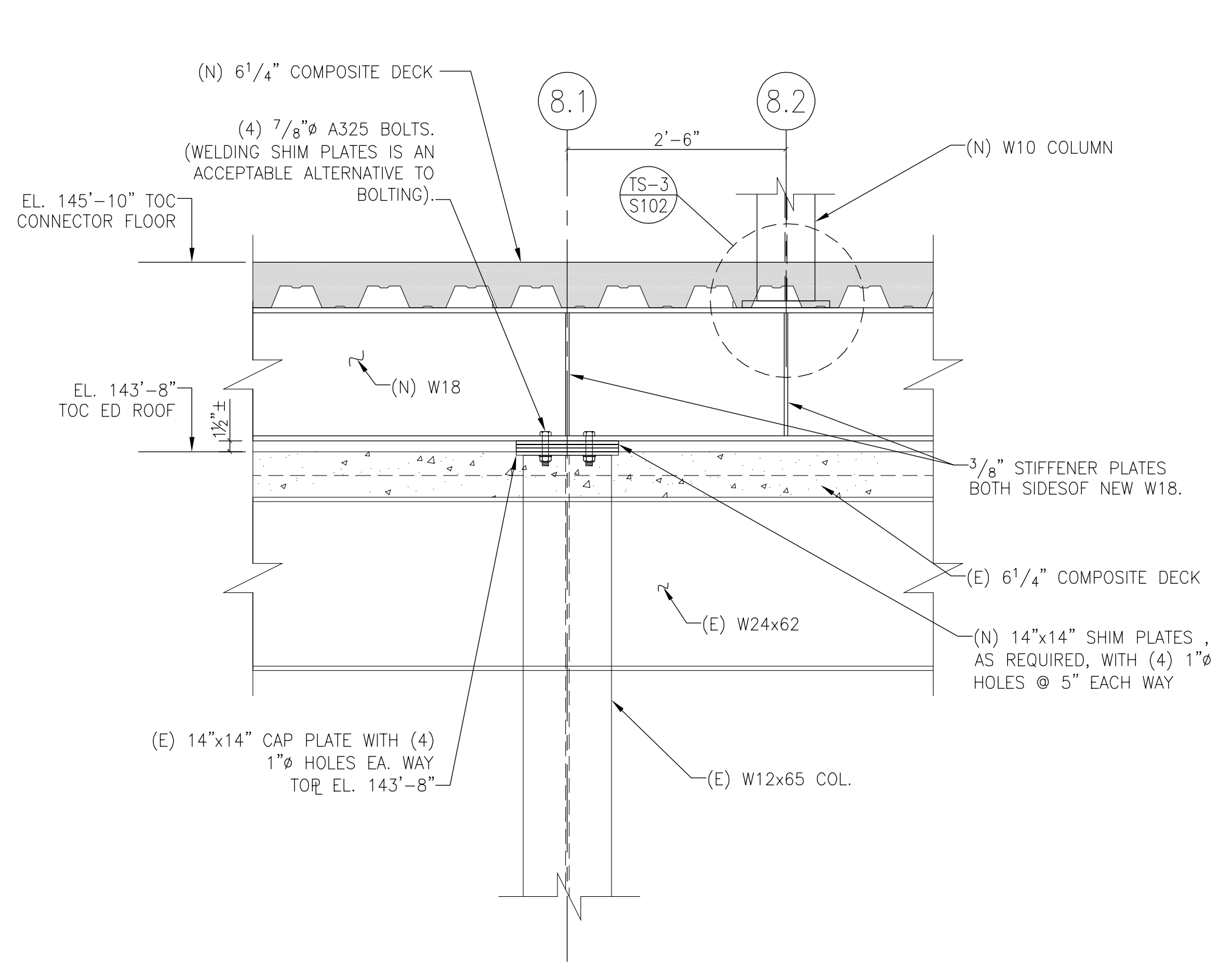
1 DETAIL COLUMN D.7-8.6 CONNECTION AT (E) ED ROOF FRAMING 3/4" = 1'-0"



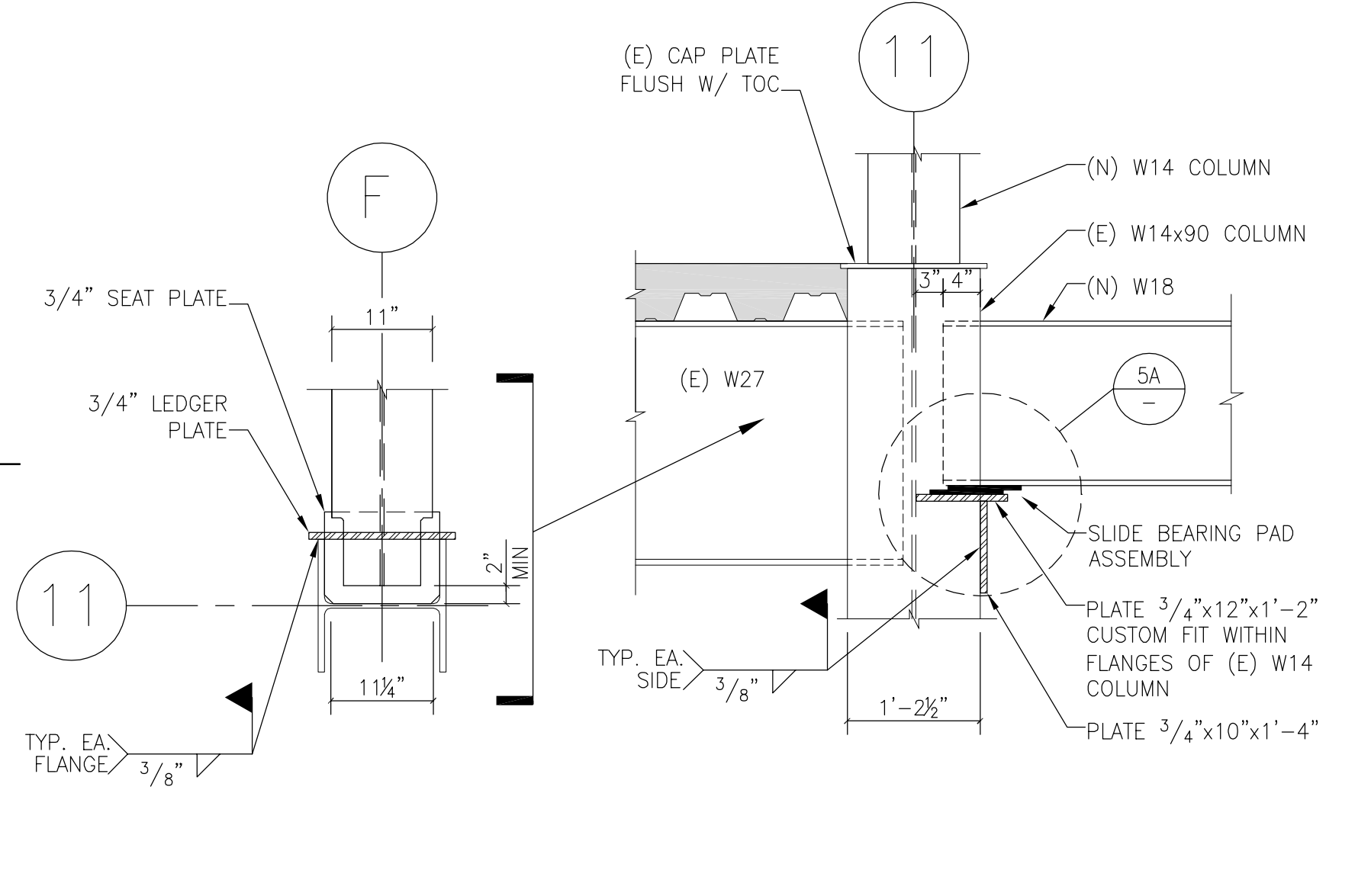
2 SECTION THROUGH CONCRETE WALL @ BEAN BUILDING 3/4" = 1'-0"



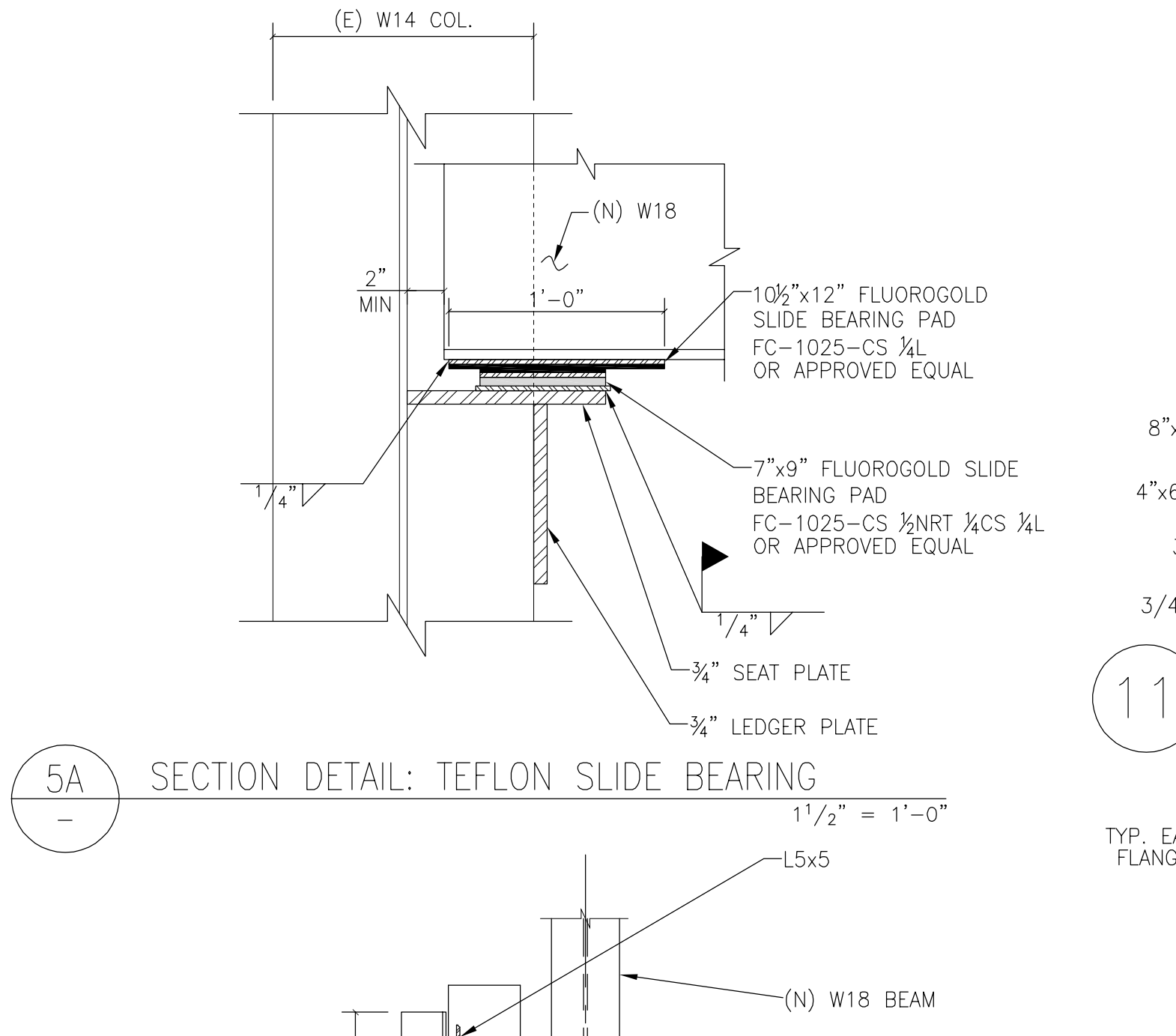
3 DETAIL CONNECTION OF (N) COLUMN D.7-8.6 TO (E) GRADE BEAM 3/4" = 1'-0"



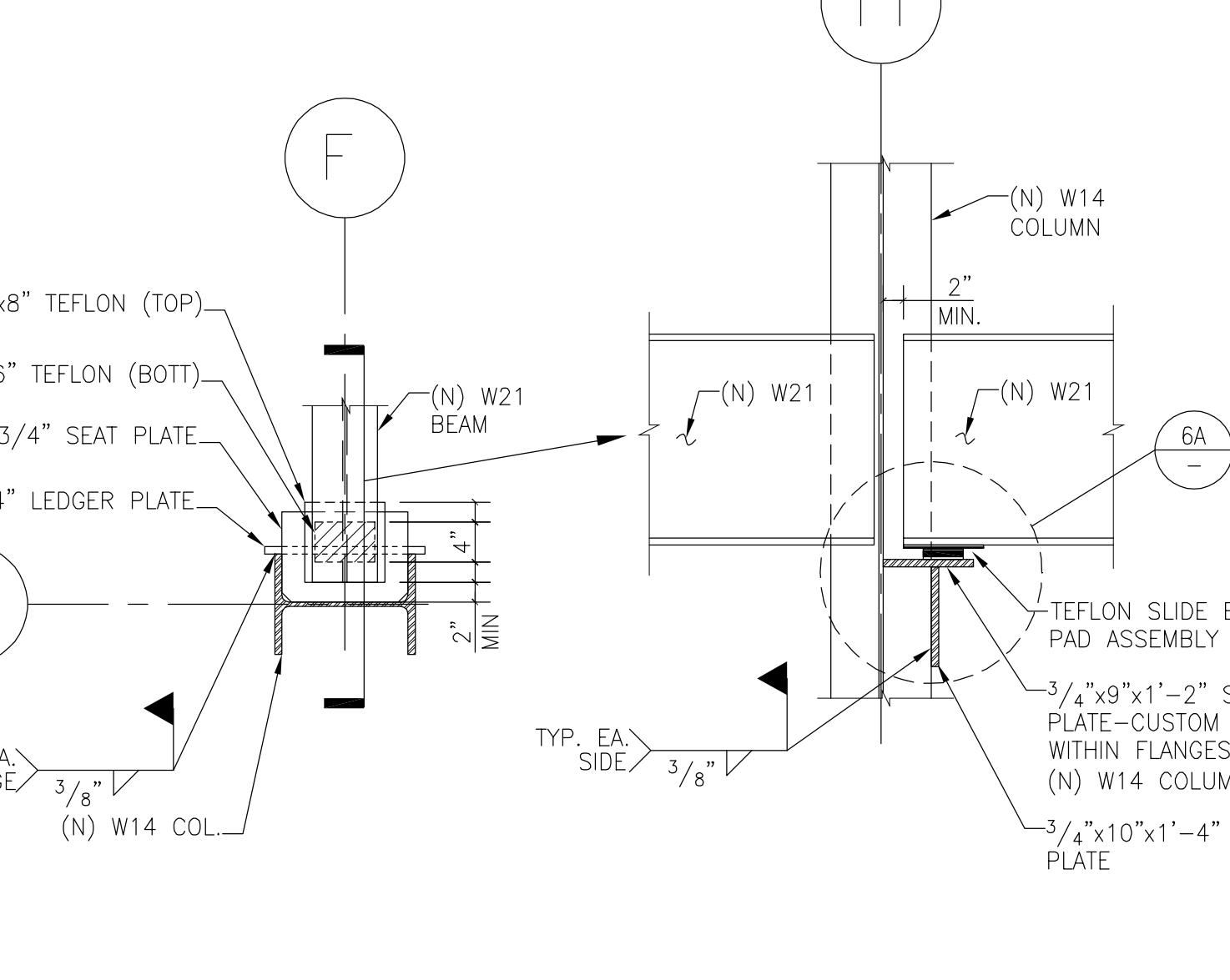
4 VERTICAL EXTENSION OF COLUMN 8.1-D.7 & 8.1-E.6 3/4" = 1'-0"



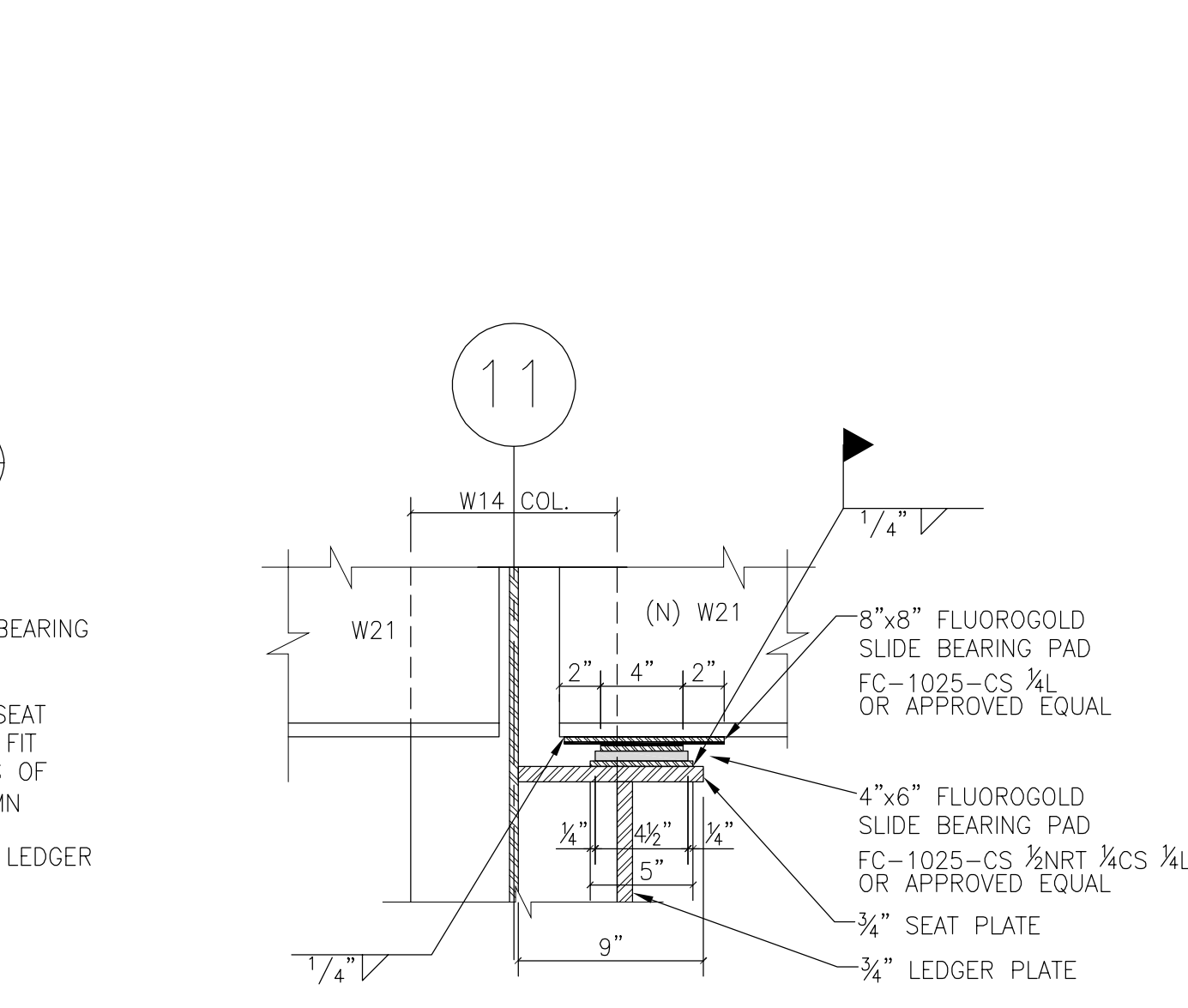
5 SLIDE BEARING DETAIL AT GROUND FLOOR 3/4" = 1'-0"



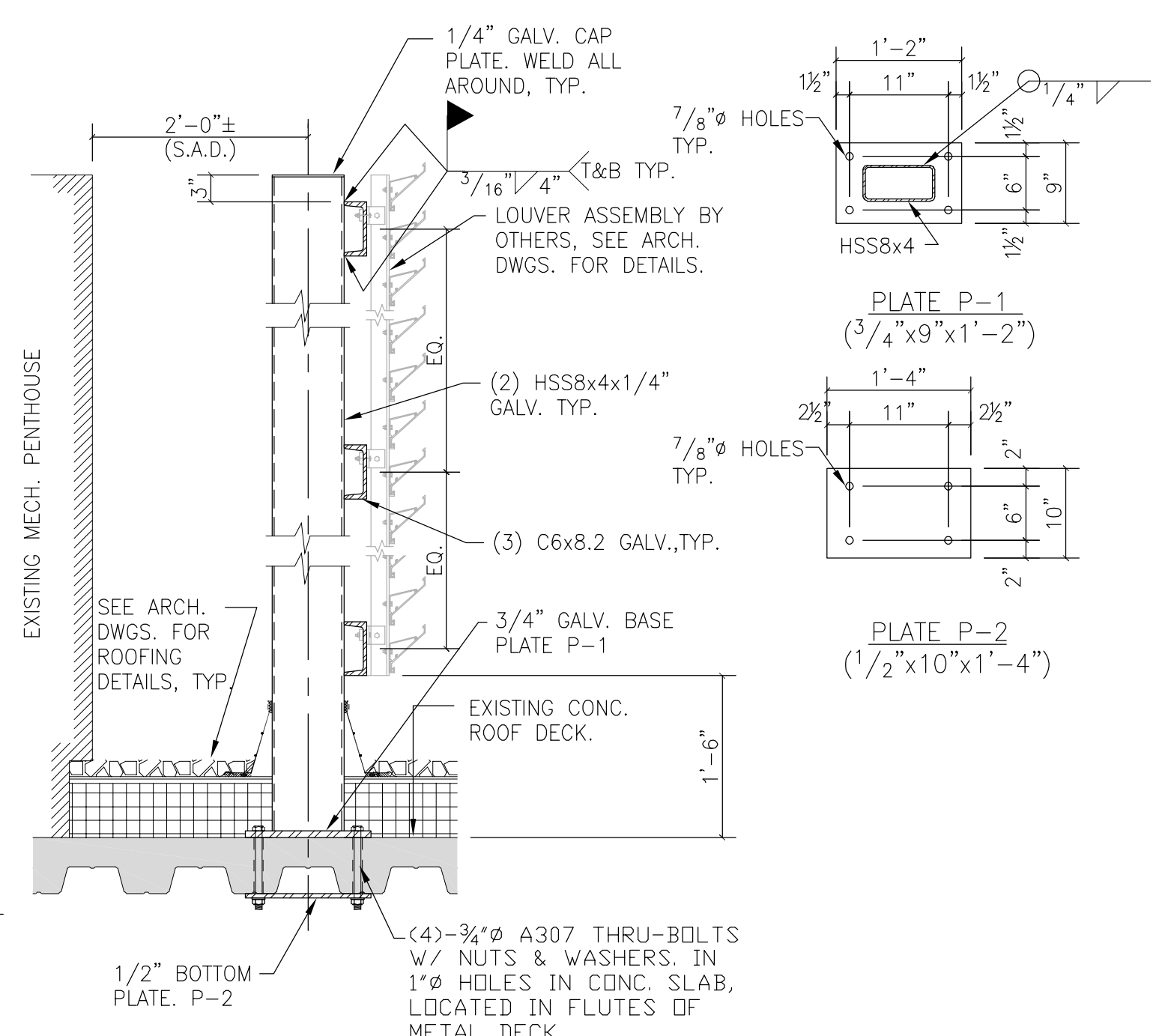
5A SECTION DETAIL: TEFLON SLIDE BEARING 1 1/2" = 1'-0"



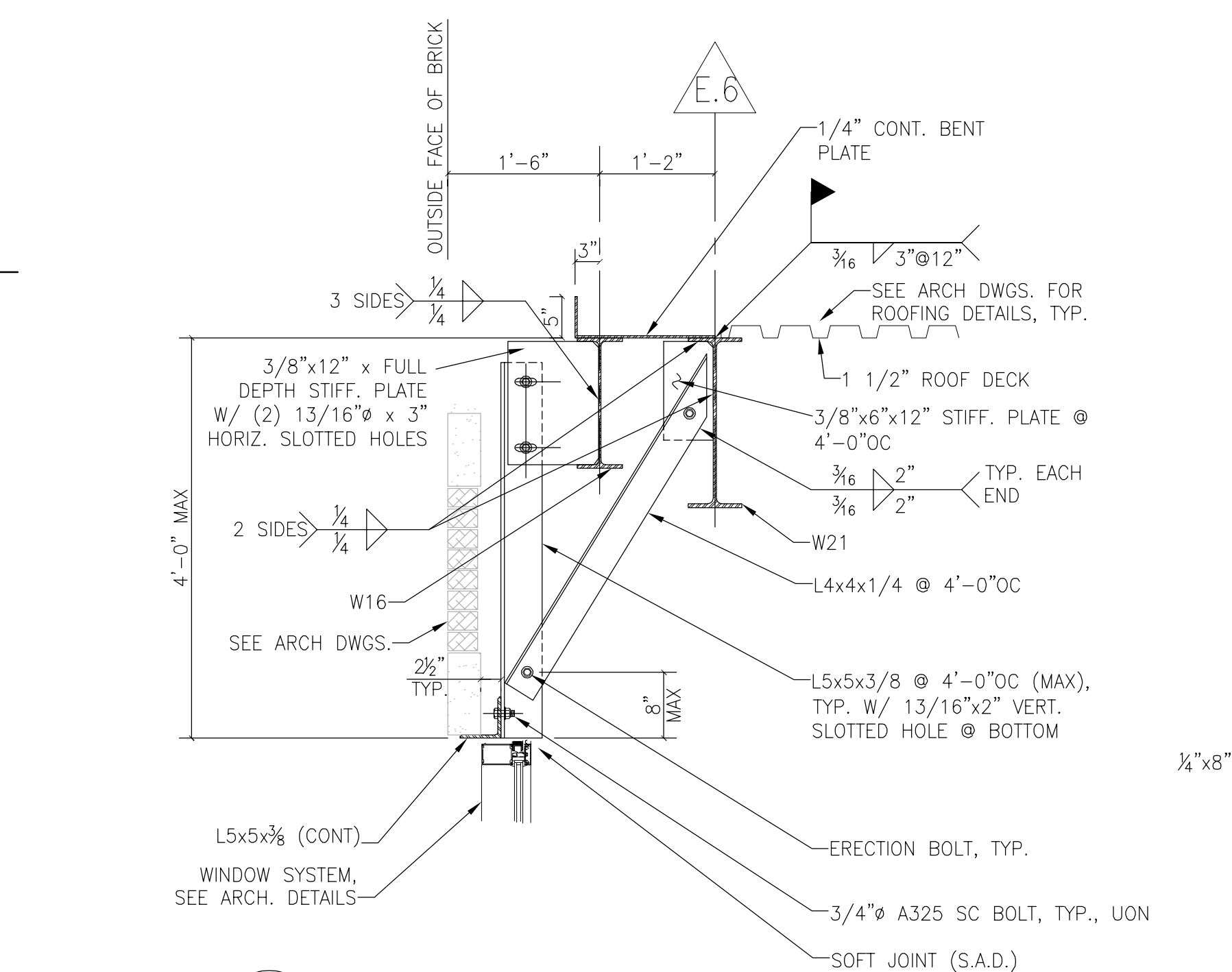
6 SLIDE BEARING DETAIL AT ROOF 3/4" = 1'-0"



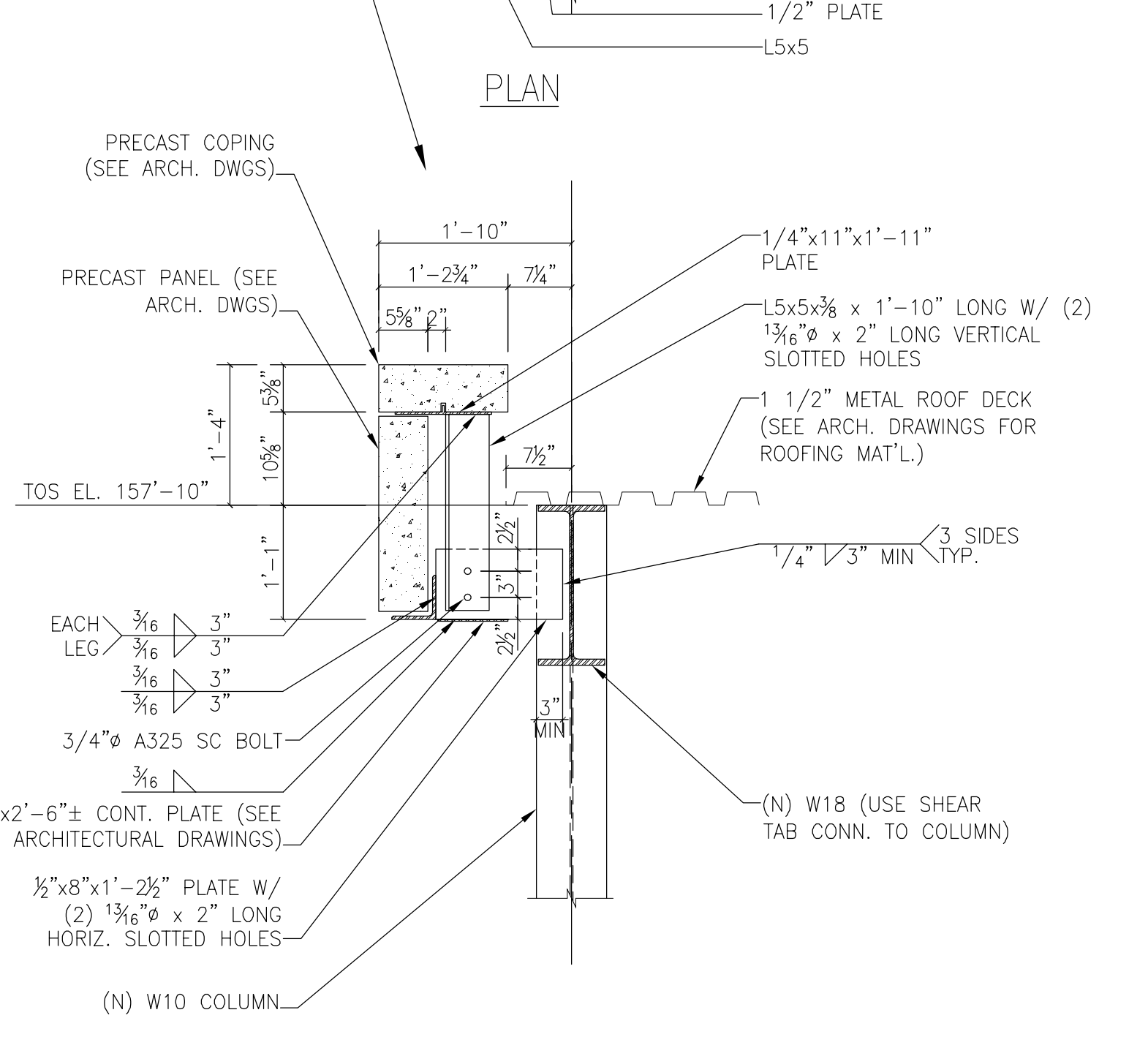
6A SECTION DETAIL: TEFLON SLIDE BEARING 1 1/2" = 1'-0"



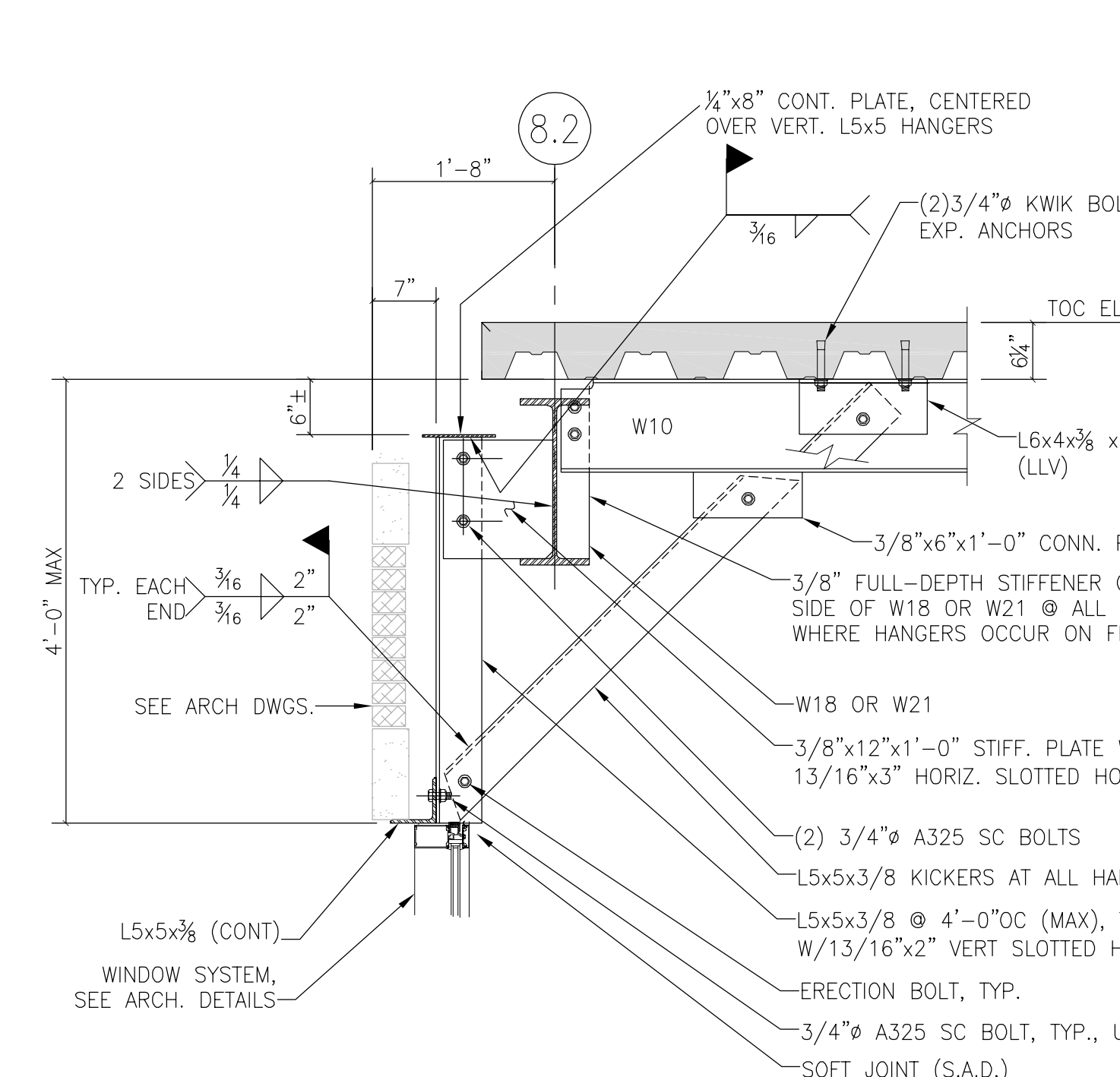
7 SCREENWALL SECTION 3/4" = 1'-0"



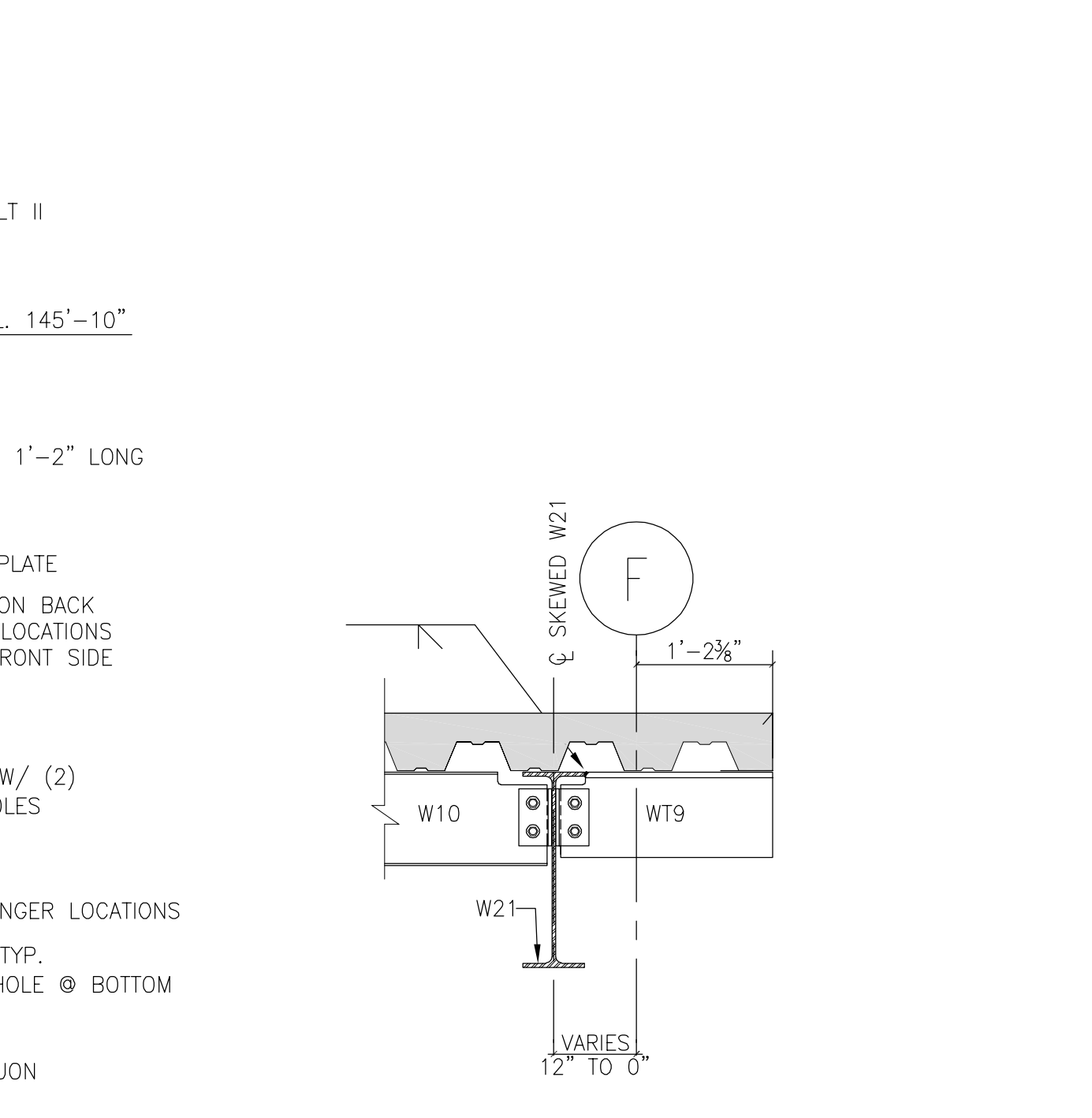
8 HANGING BRICK LINTEL DETAIL OVER STRIP WINDOW 3/4" = 1'-0"



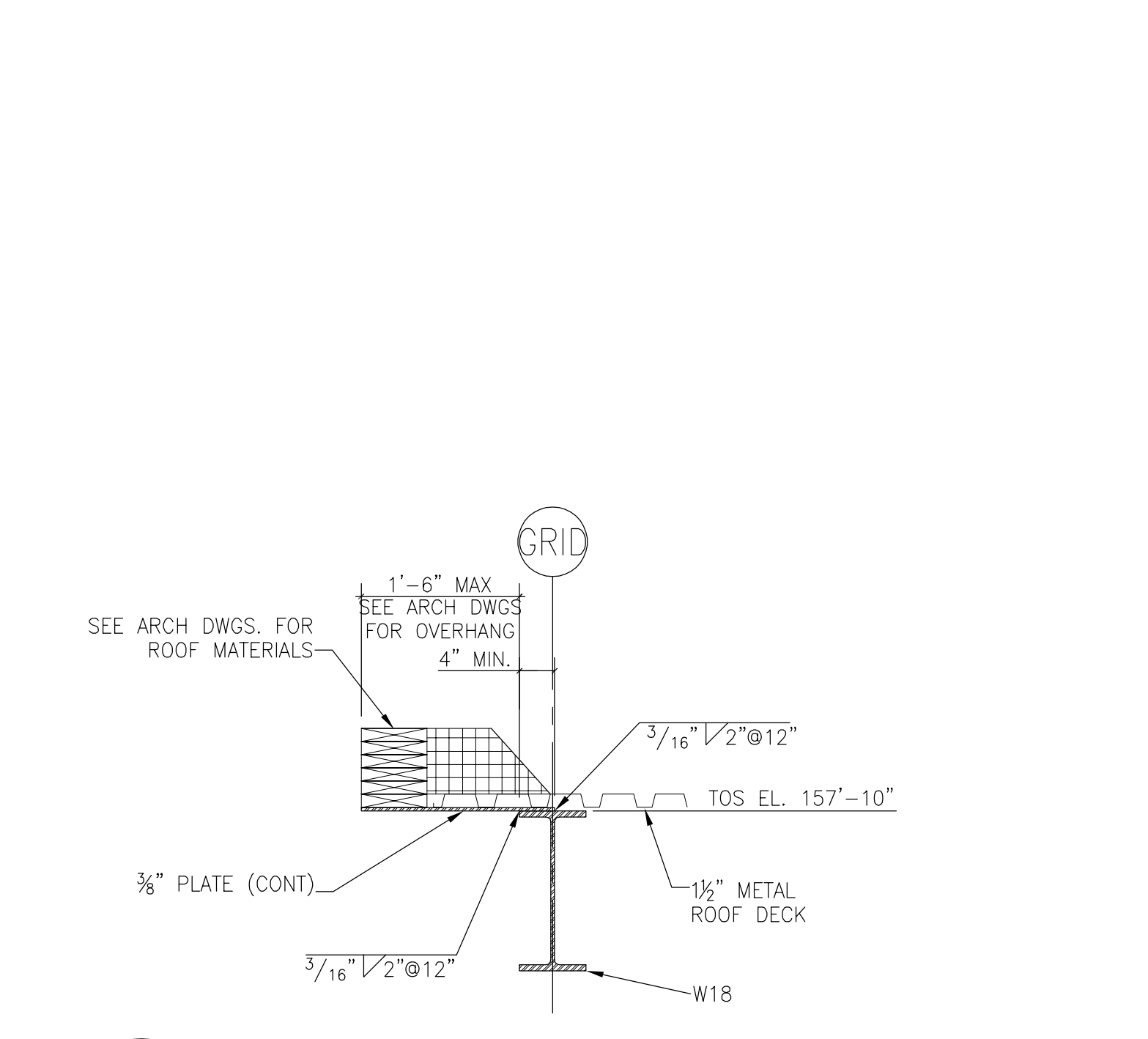
9 PRECAST CONCRETE COPING SUPPORT DETAIL AT LOBBY CONNECTOR 3/4" = 1'-0"



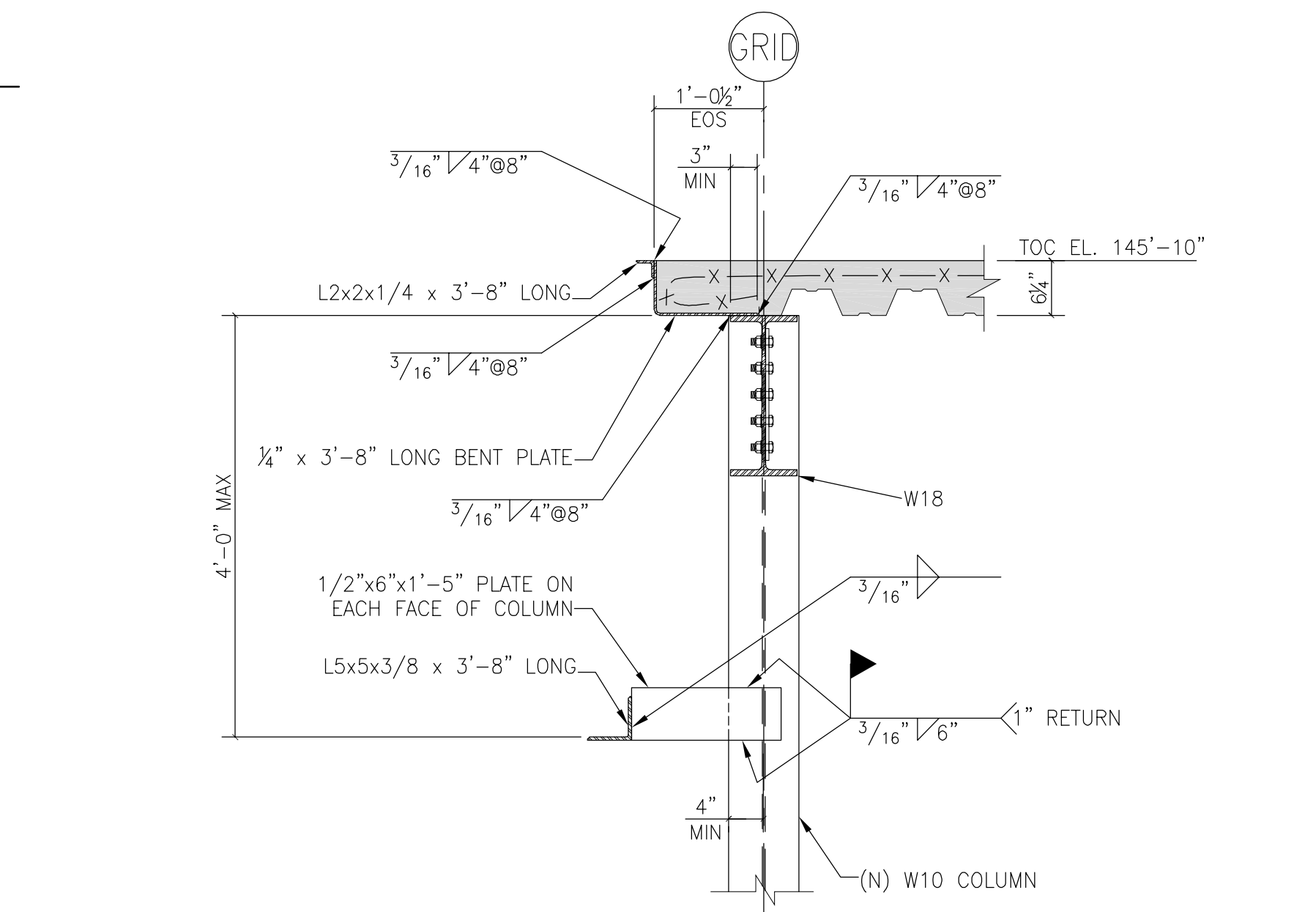
10 TYPICAL CURTAIN WALL LINTEL SUPPORT DETAIL AT NORTH-SOUTH LOBBY CONNECTOR 3/4" = 1'-0"



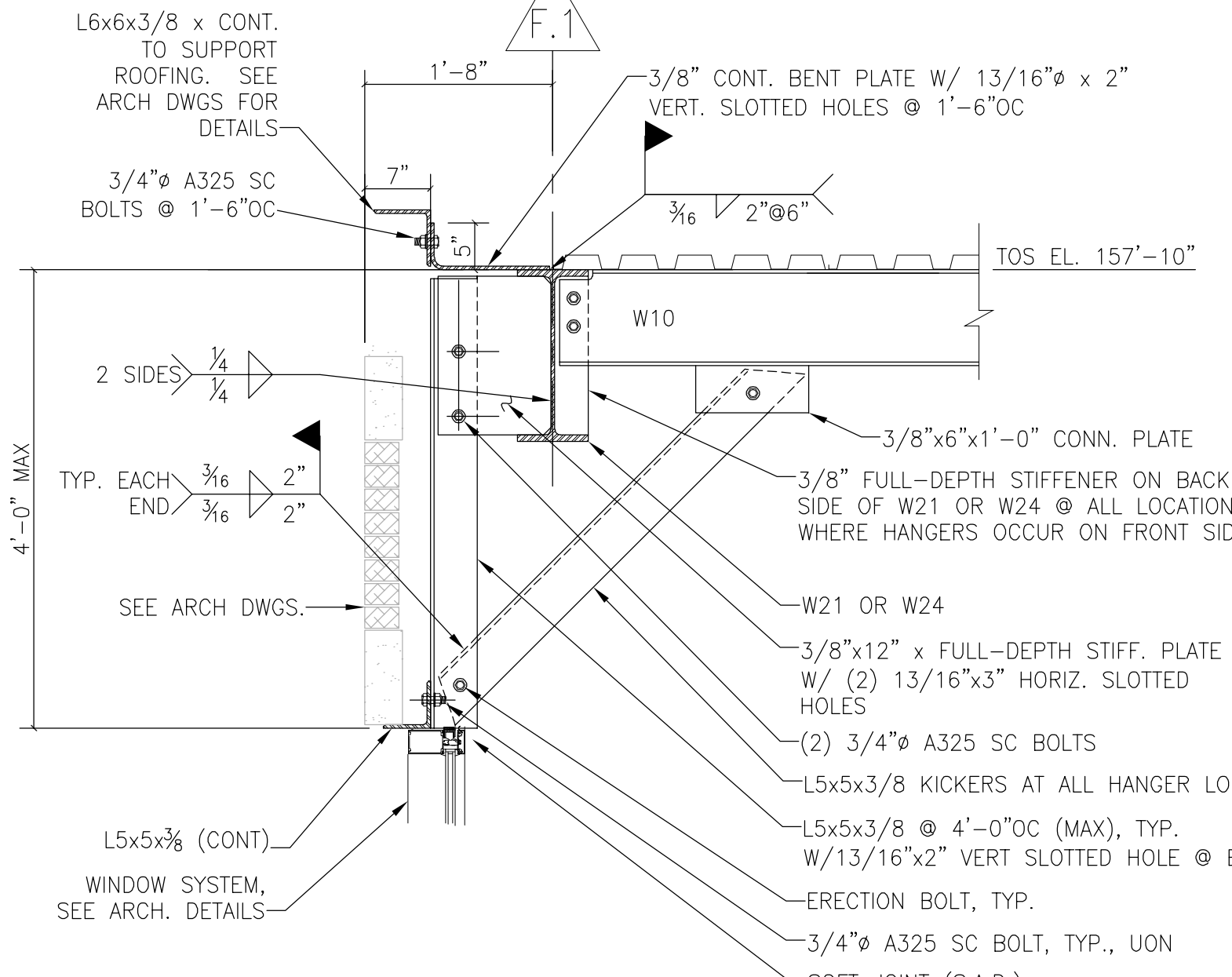
11 SECTION: EDGE OF SLAB SUPPORT DETAIL 3/4" = 1'-0"



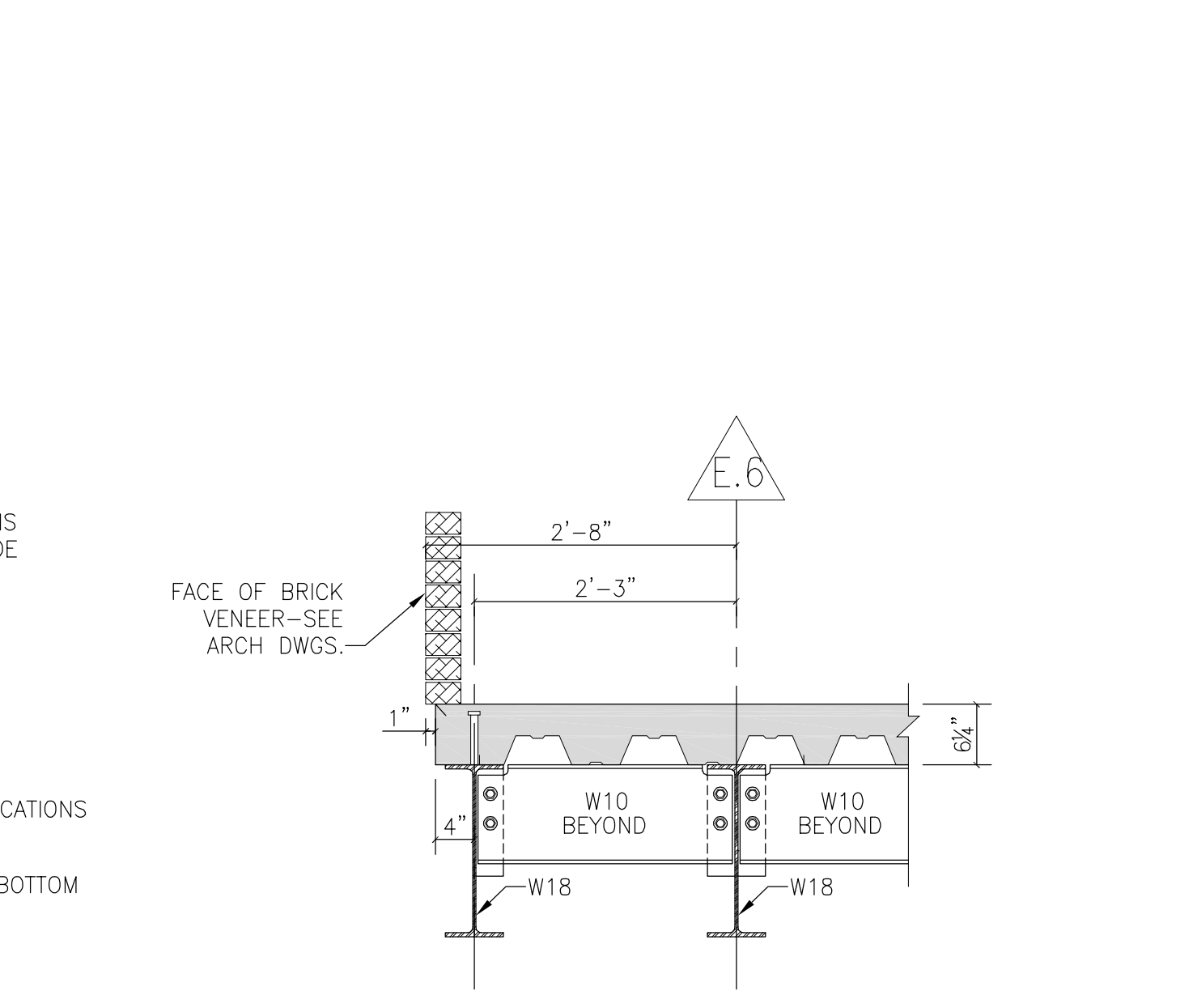
12 TYPICAL ROOF BLOCKING SUPPORT DETAIL 3/4" = 1'-0"



13 SLAB EDGE/RELIEVING ANGLE AT PILASTER AT GROUND FLOOR 3/4" = 1'-0"



14 TYPICAL CURTAIN WALL LINTEL SUPPORT DETAIL AT EAST LOBBY CONNECTOR 3/4" = 1'-0"



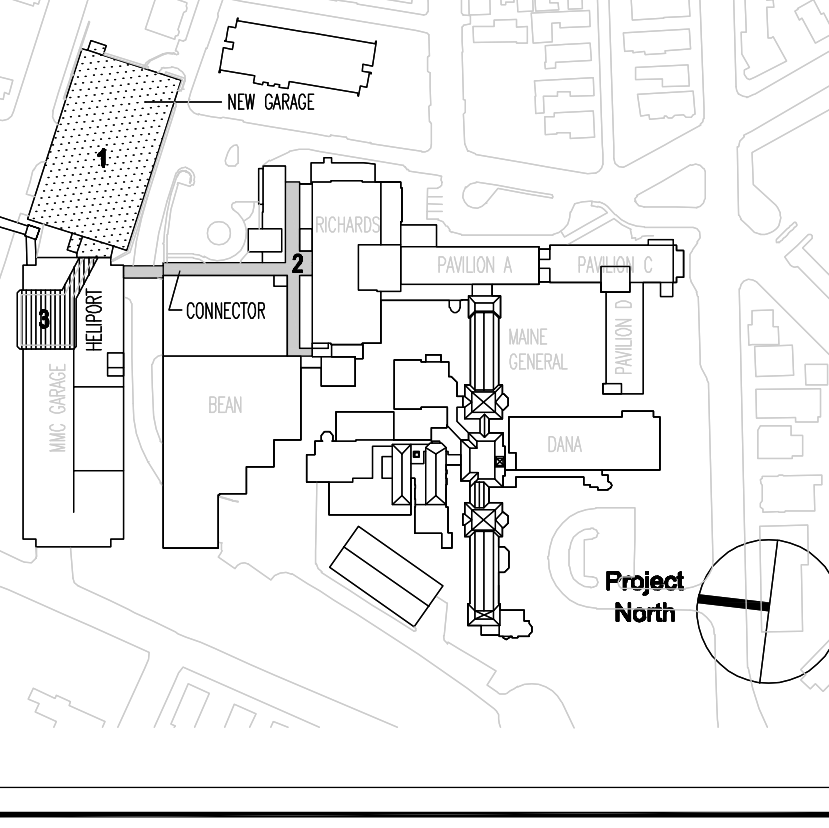
15 SECTION: BRICK VENEER SUPPORTED ON CONCRETE SLAB 3/4" = 1'-0"

General Notes:
1. EXISTING BRICK VENEER TO BE TEMPORARILY SHORED DURING INSTALLATION OF NEW CONCRETE SLAB. CONTRACTOR SHALL BE RESPONSIBLE FOR MEANS & METHODS OF TEMP. SHORING. AFTER SLAB IS CAST & CURED, BRICK VENEER SHALL BEAR ON NEW CONCRETE SLAB.

SGH
Simpson Gumpertz & Heger Inc.
Consulting Engineers
Boston, MA 41 Bayon Street, Telephone: (781) 307 9000
Building 1, Suite 500 Fax: (781) 307 9000
Waltham, MA 02455
San Francisco, CA The Landmark at One Market, Telephone: (415) 495 3700
Suite 600 San Francisco, CA Fax: (415) 495 3550
94105
Washington, DC 1355 Ploard Drive, Telephone: (301) 417 0999
Suite 278 Rockville, MD Fax: (301) 417 9825
20850

MARK	ISSUE DATE	DESCRIPTION
PERMIT	09/16/04	PERMIT SET
BID	08/26/04	BID SET

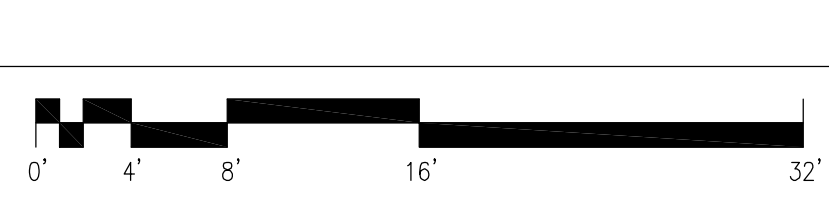
Issue Log



TRO
ARCHITECTURAL
PLANNING
ENGINEERING
INTERIOR DESIGN
The Ritchie Organization
80 Bridge Street
Newton, MA 02459-1154
617-869-9400

Maine Medical Center
Pkg F - Garage / Vault / Conn / Heliport
Portland, ME MMC Project No. 21845

Drawing Title
LOBBY CONNECTOR SECTIONS & DETAILS



Commission No. 4678 Date Issued 08/26/04
Scale AS NOTED Sheet Number
Drawn By SWW
Approved By JHT/JLT
Filename S330
Copyright © 2004 The Ritchie Organization

PKG-F
S331