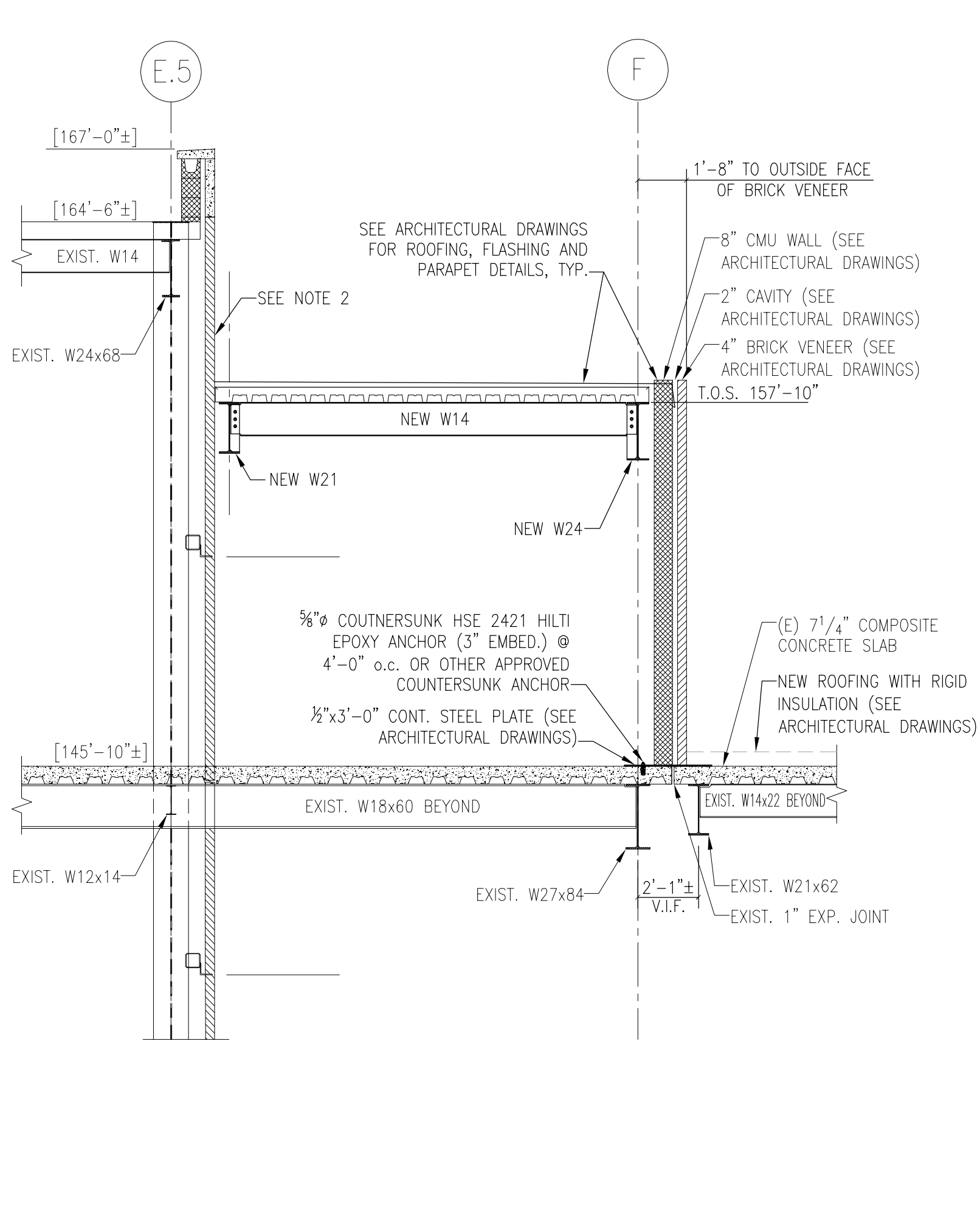
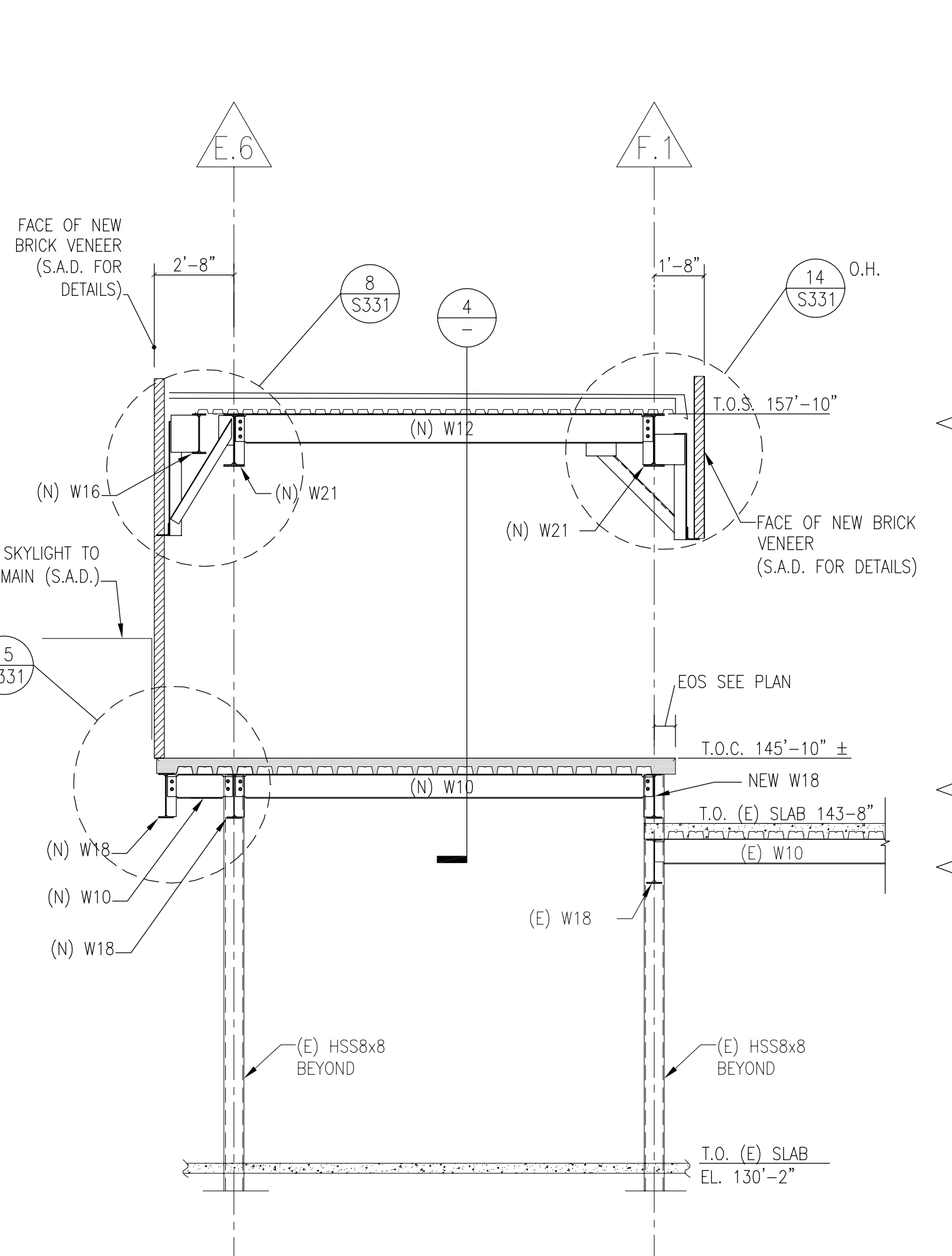


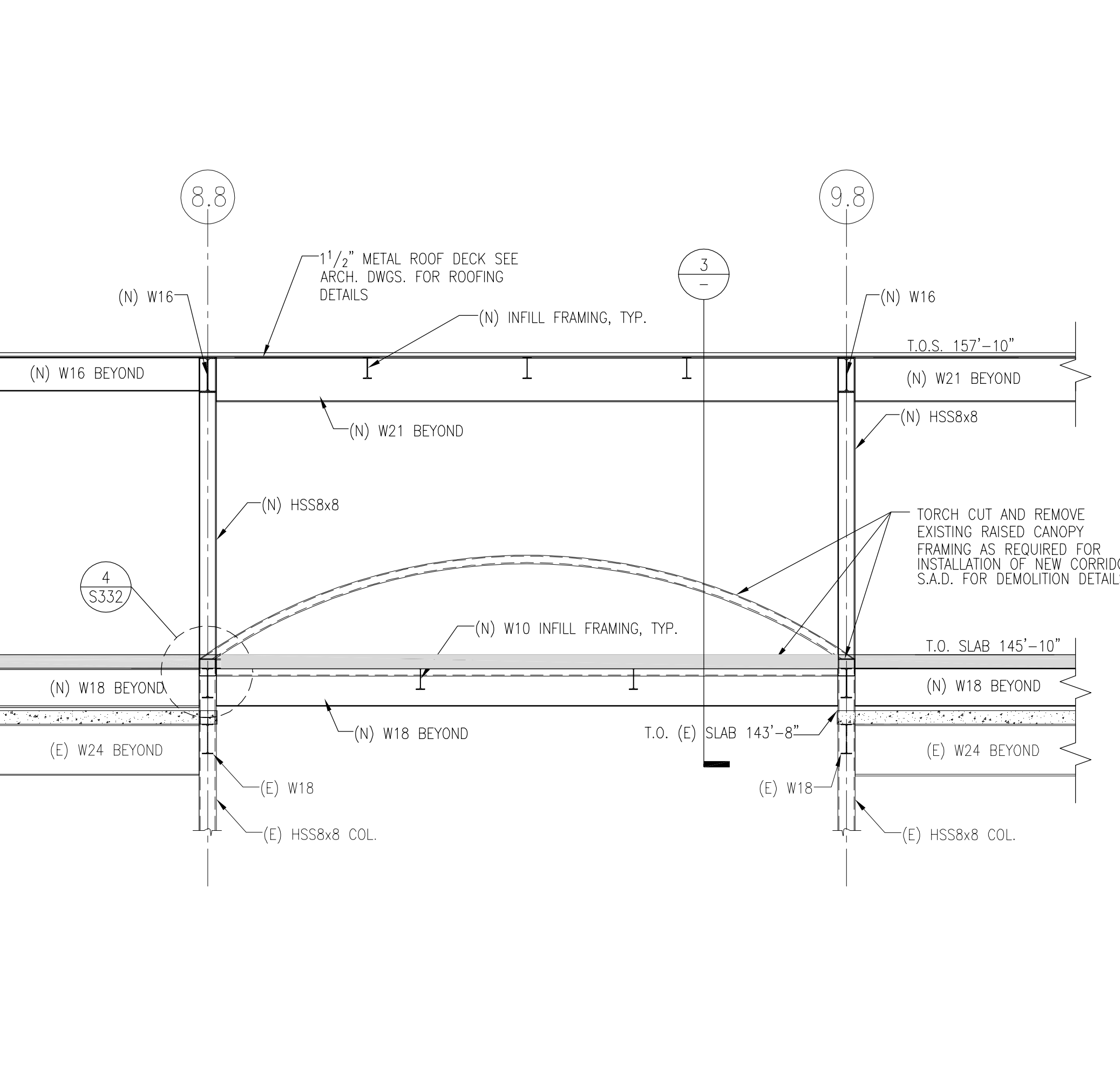
1 SECTION THRU REAR LOBBY CONNECTOR AT UTILITY PIPING TUNNEL 1/4" = 1'-0"



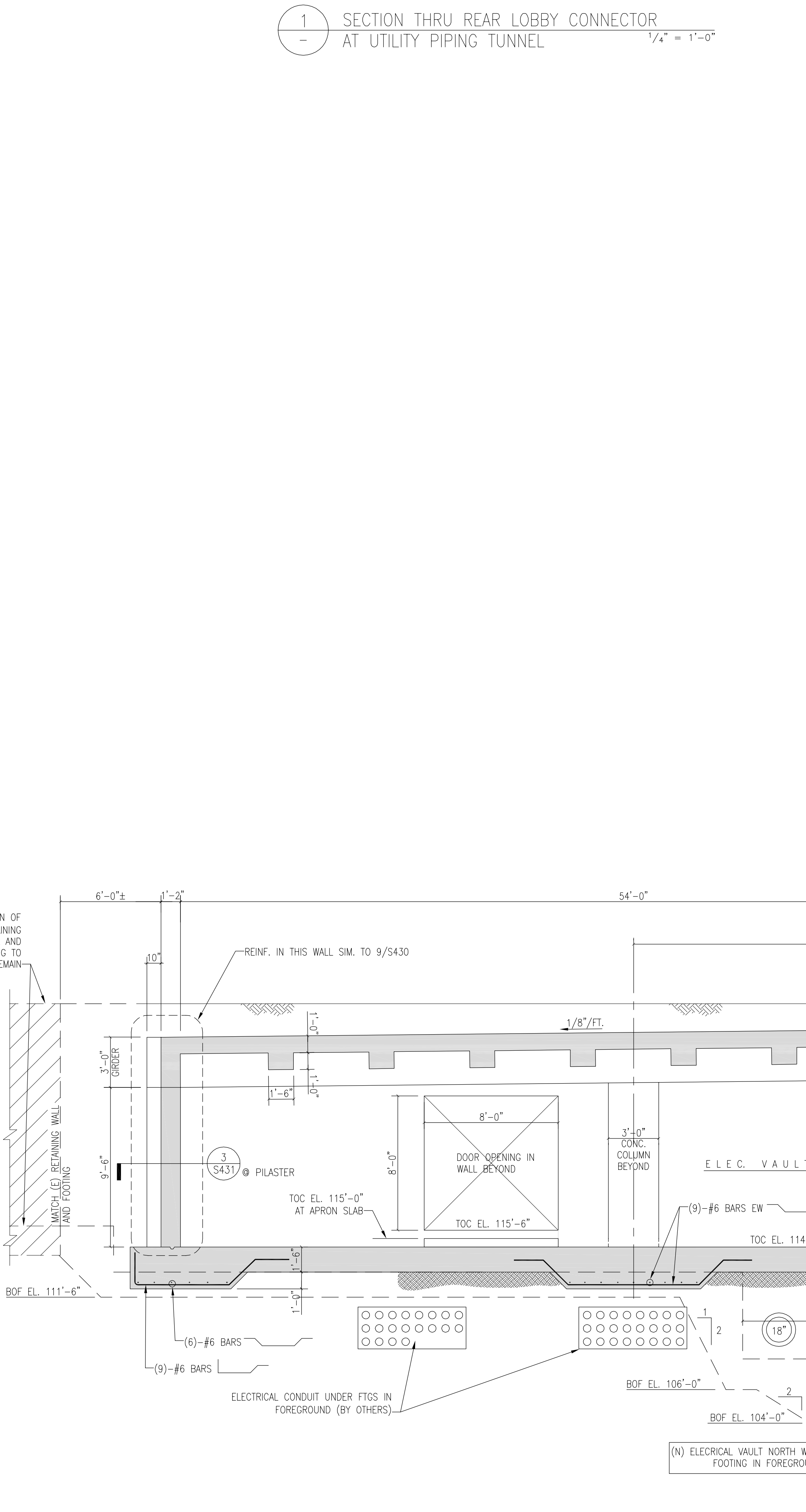
2 SECTION THRU LOBBY CONNECTOR ON SOUTH SIDE OF BEAN BLDG. 1/4" = 1'-0"



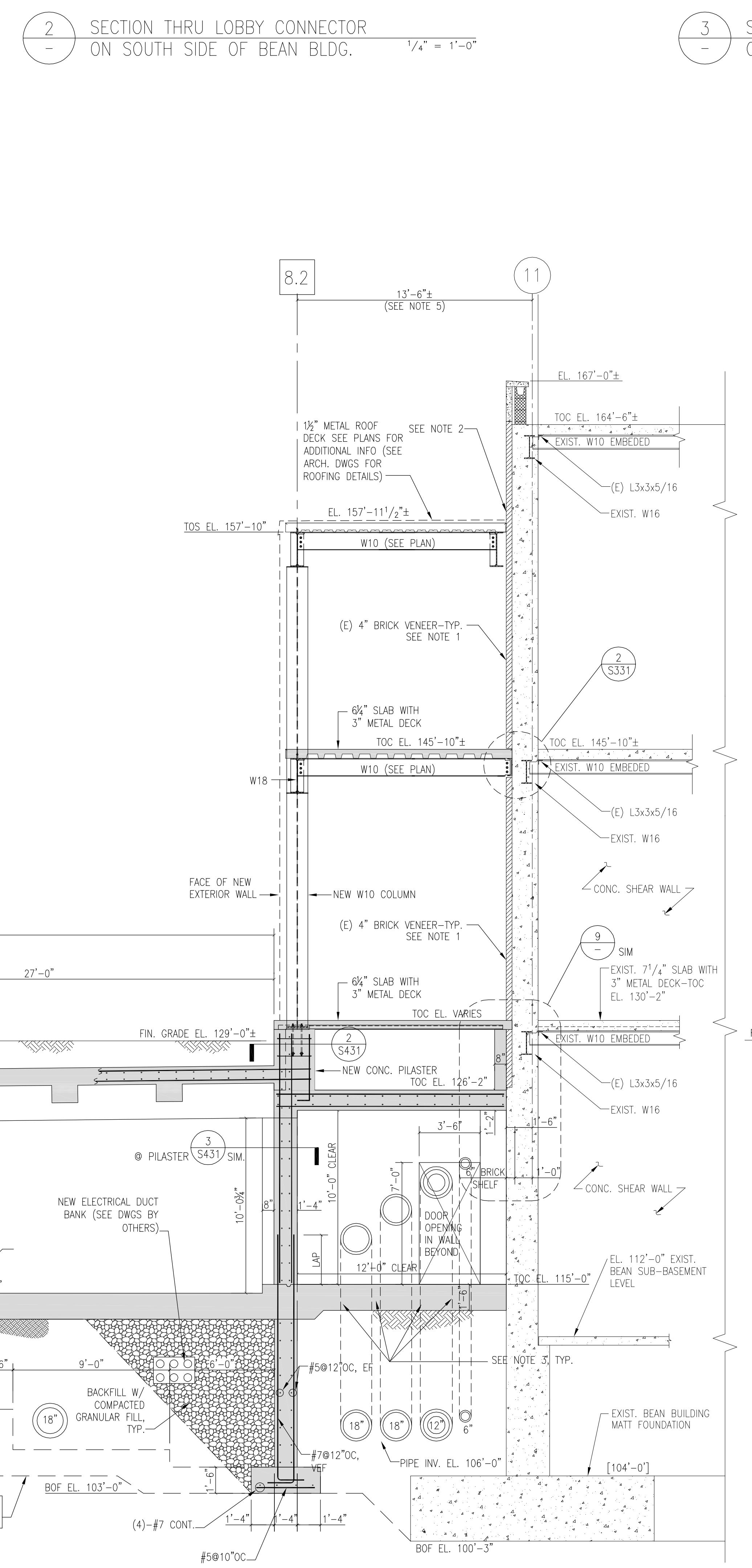
3 SECTION THRU LOBBY CONNECTOR ON TOP OF ED EXPANSION 1/4" = 1'-0"



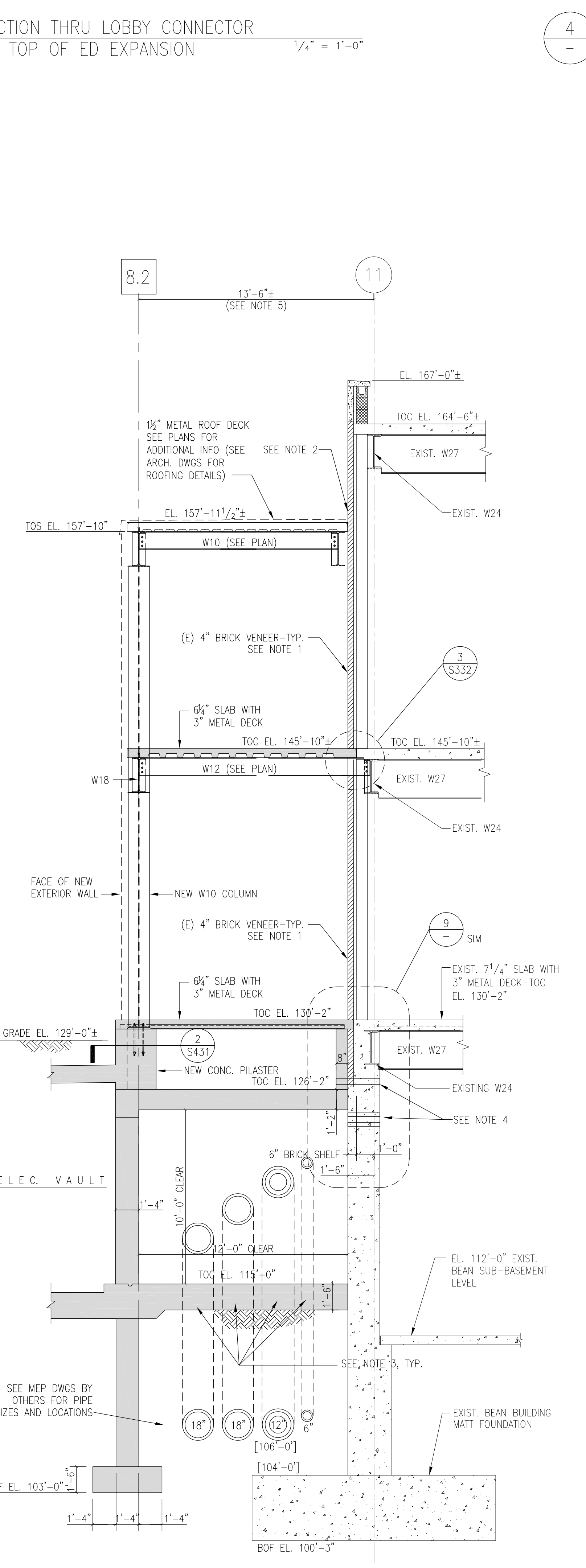
4 SECTION THRU LOBBY CONNECTOR AT EXISTING BOW TRUSS ALONG GRID E.6 1/4" = 1'-0"



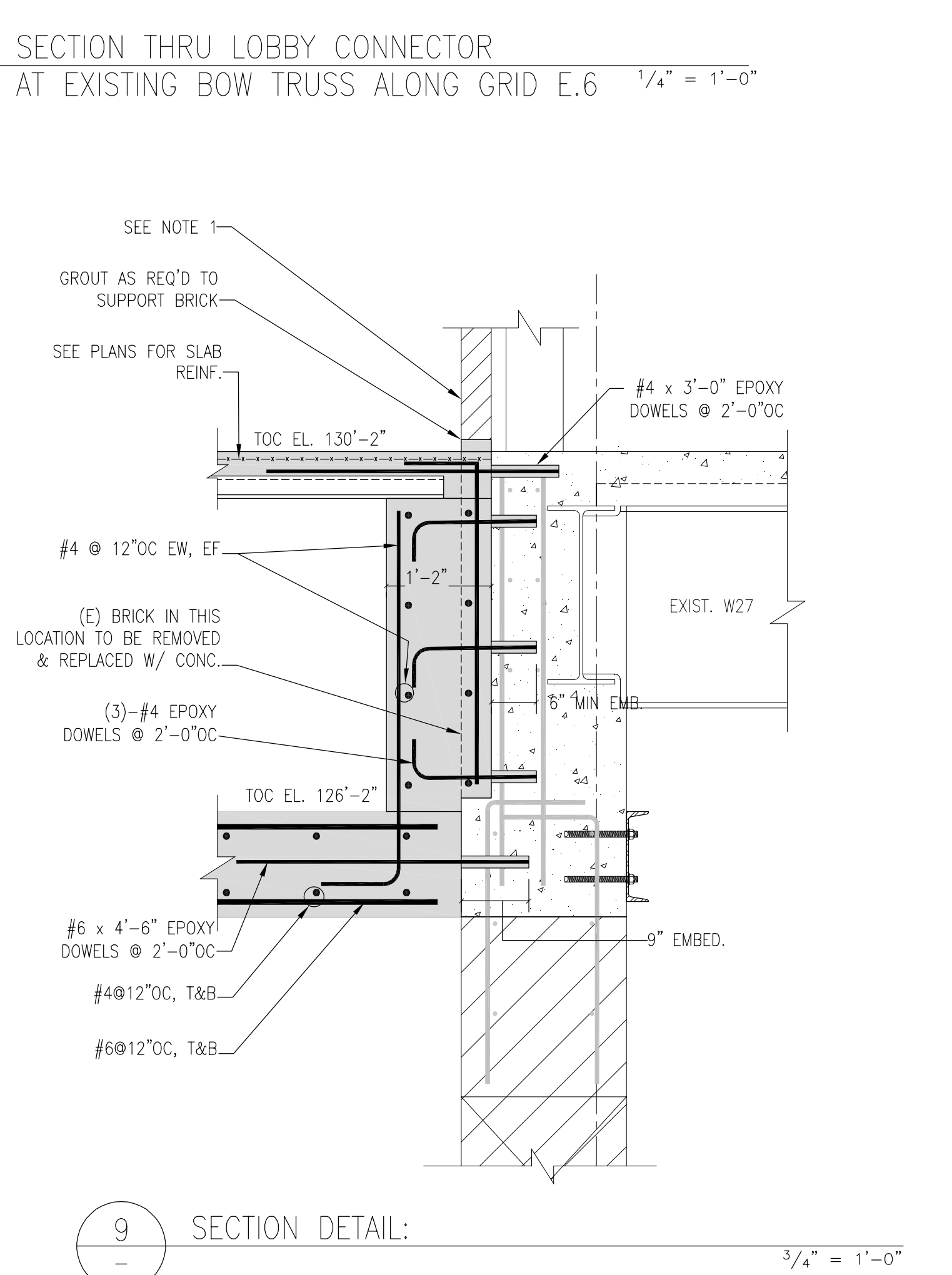
6 SECTION THRU REAR LOBBY CONNECTOR AT UTILITY PIPING TUNNEL 1/4" = 1'-0"



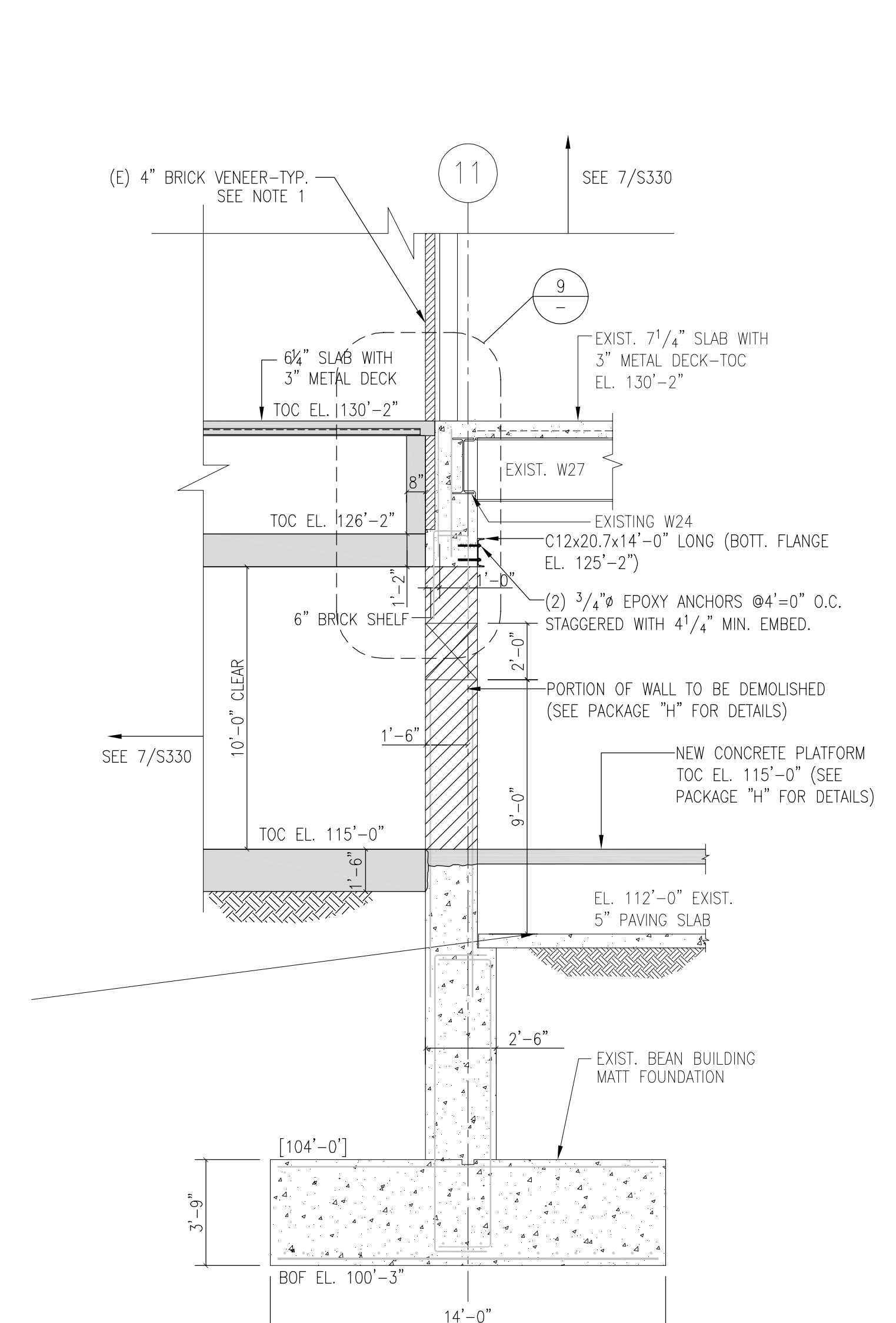
7 SECTION THRU REAR LOBBY CONNECTOR AT UTILITY PIPING TUNNEL 1/4" = 1'-0"



8 SECTION THRU (E) BEAN BUILDING @ NEW OPENING FOR CORRIDOR NEAR GRID C 1/4" = 1'-0"



9 SECTION DETAIL: 3/4" = 1'-0"



- General Notes:
- EXISTING BRICK VENEER TO BE TEMPORARILY SHORED DURING INSTALLATION OF NEW CONCRETE SLAB. CONTRACTOR SHALL BE RESPONSIBLE FOR MEANS & METHODS OF TEMP. SHORING. AFTER SLAB IS CAST & CURED, BRICK VENEER SHALL BEAR ON NEW CONCRETE SLAB.
  - EXISTING BRICK VENEER ABOVE CORRIDOR ROOF TO BE REMOVED AS NEEDED TO INSTALL NEW THROUGH WALL FLASHING (SEE ARCH. DRAWINGS).
  - SEE MECHANICAL DRAWINGS BY OTHERS FOR DETAILS OF SLEEVES IN CONCRETE MAT FOOTING AND LOCATIONS OF WHERE PIPING PENETRATES THE CONCRETE MAT FOOTING.
  - NEW CORED OPENINGS IN EXISTING CONCRETE FOUNDATION WALL FOR PASSAGE OF NEW UTILITIES. COORDINATE PLAN LOCATIONS AND ELEVATION WITH MEP DRAWINGS. NO CORES SHALL BE HIGHER THAN ELEV. 127'-0", U.O.A.
  - ALL DIMENSIONS SHOULD BE COORDINATED WITH ARCH. DWGS. AND FIELD VERIFIED DIMENSIONS PRIOR TO SUBMITTING SHOP DRAWINGS FOR REVIEW AND APPROVAL.

**SGH**  
Simpson Gumpertz & Heger Inc.  
Consulting Engineers

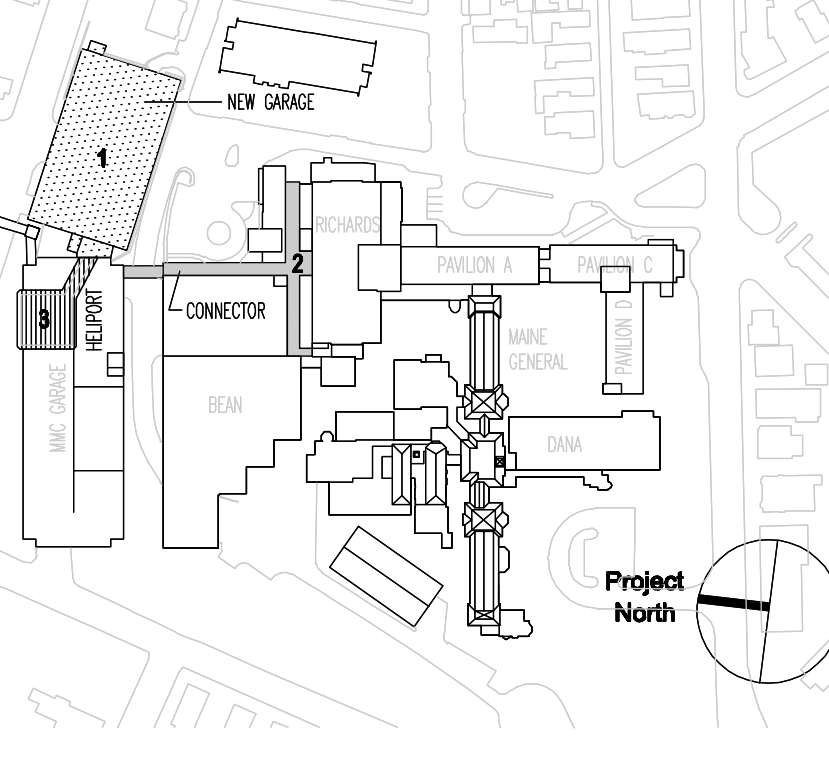
Boston, MA 41 Bayon Street, Suite 600  
Telephone: (781) 307 9000  
Facsimile: (781) 307 9009

San Francisco, CA The Landmark at One Market, Suite 600  
Telephone: (415) 498 3700  
Facsimile: (415) 498 3550

Washington, DC 1355 Ploard Drive, Suite 278  
Telephone: (301) 417 0999  
Facsimile: (301) 417 9825

MARK	ISSUE DATE	DESCRIPTION
PERMIT	09/16/04	PERMIT SET
BID	08/26/04	BID SET

Issue Log

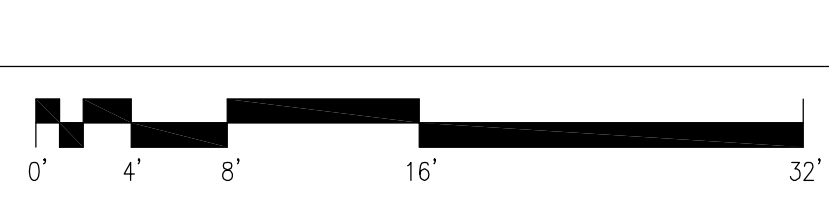


**TRO**  
ARCHITECTURAL PLANNING  
ENGINEERING  
INTERIOR DESIGN

The Ritchie Organization  
80 Bridge Street  
Newtown, MA 02458-1154  
617-869-9400

**Maine Medical Center**  
Pkg F - Garage / Vault / Conn / Heliport  
Portland, ME MMC Project No. 21845

**LOBBY CONNECTOR SECTIONS & DETAILS**



Commission No. 4678 Date Issued 08/26/04  
Scale AS NOTED Sheet Number  
Drawn By SWW  
Approved By JHT/SJZ  
Filename S330

**PKG-F**  
**S330**

Copyright © 2004 The Ritchie Organization