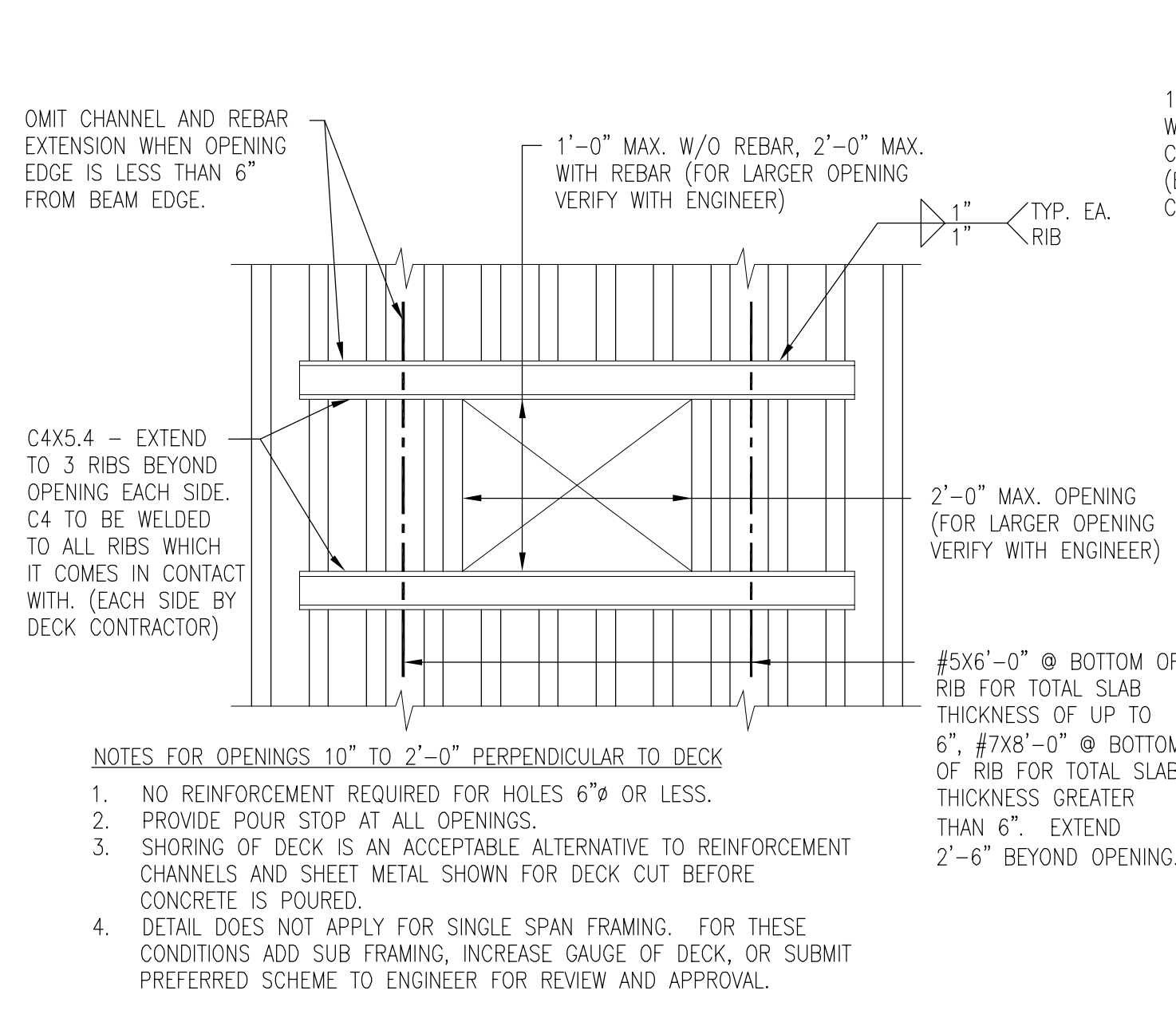
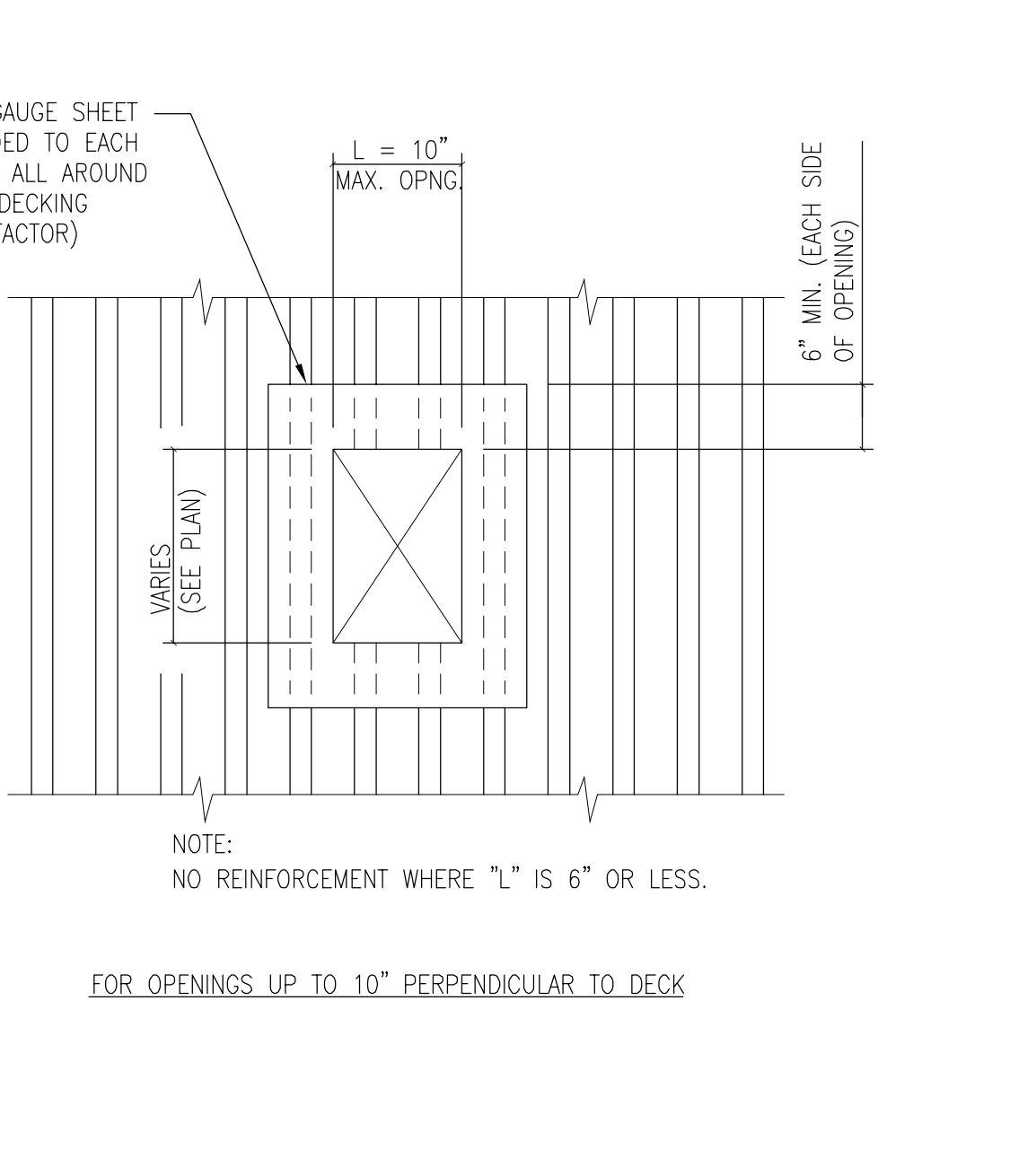


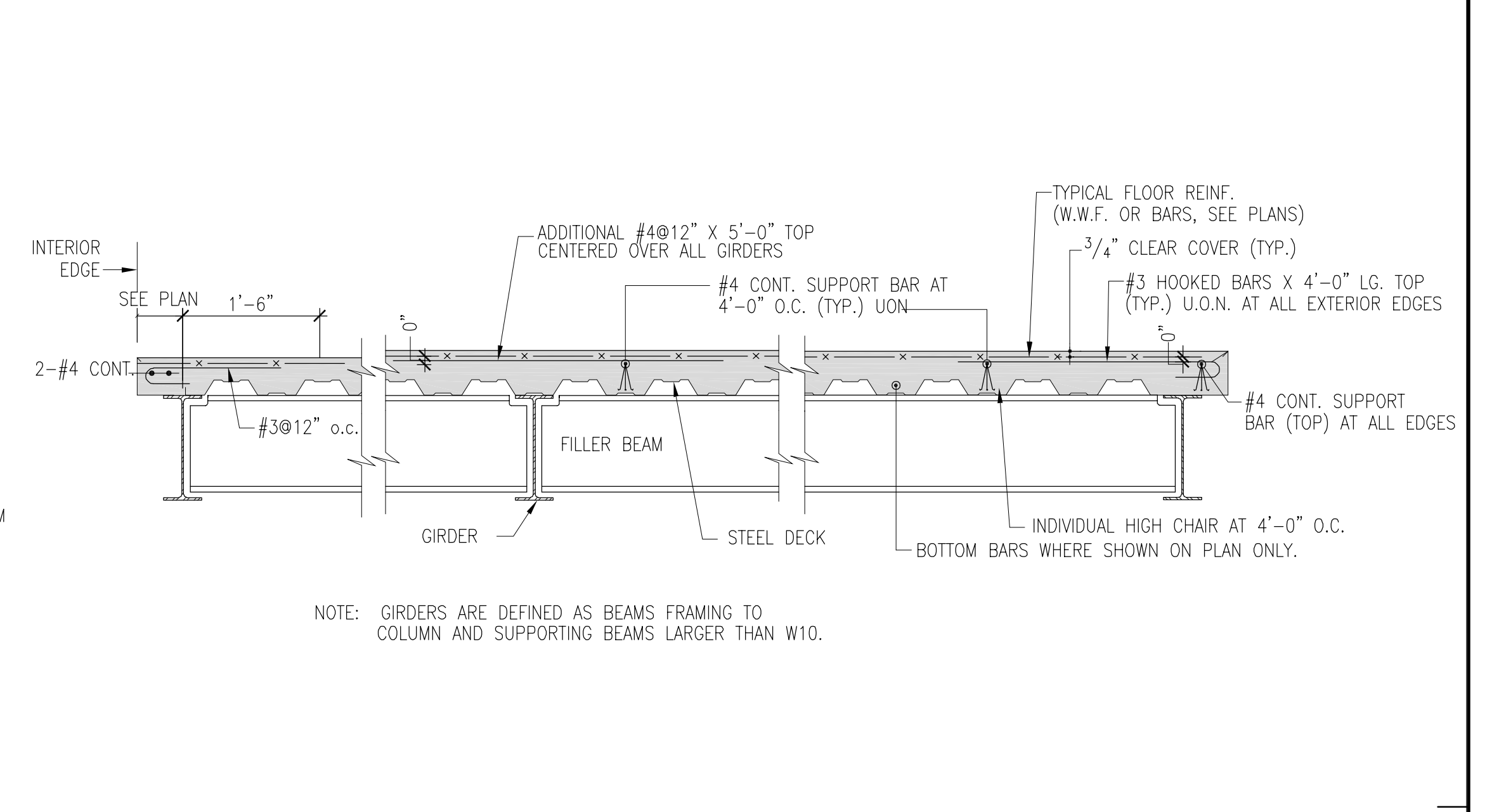
TS-12 FASTENING PATTERN FOR COMPOSITE METAL DECK
3/4" = 1'-0"



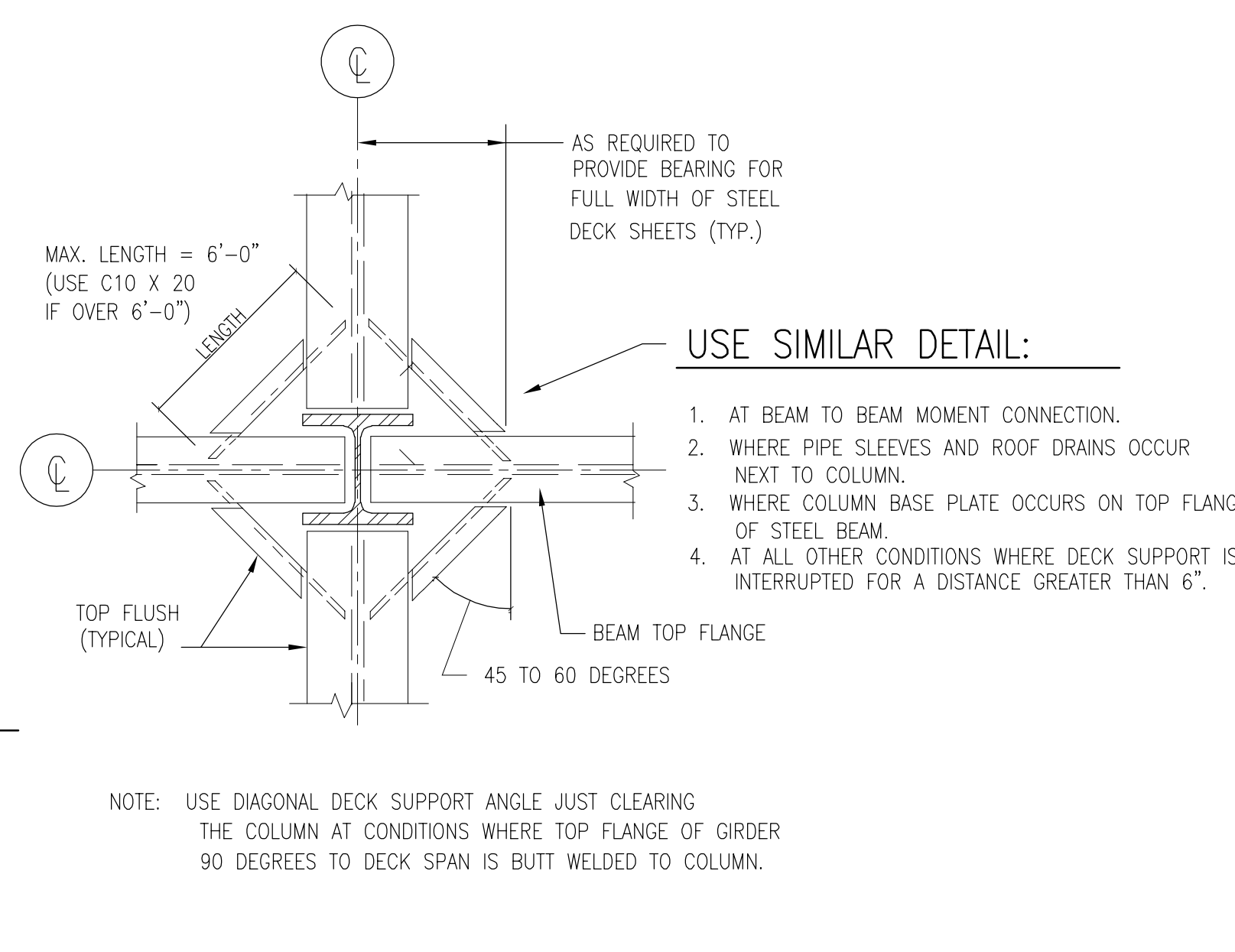
TS-13 COMPOSITE FLOOR DECK REINFORCING AT OPENINGS
3/4" = 1'-0"



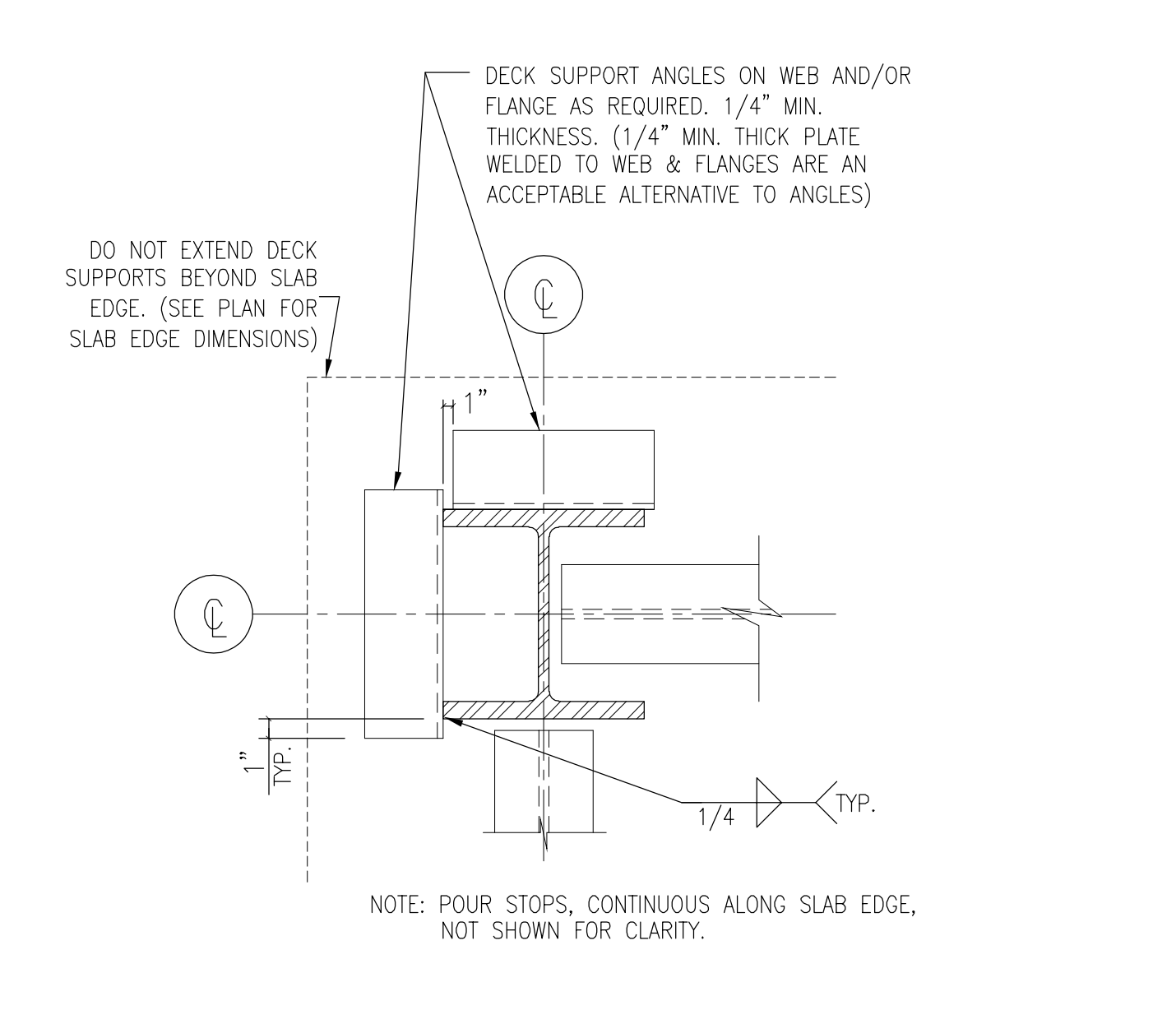
TS-14 DECK REINFORCEMENT @ ELEC./DATA/TELEPHONE ROOM CONDUIT BANK FLOOR PENETRATIONS
3/4" = 1'-0"



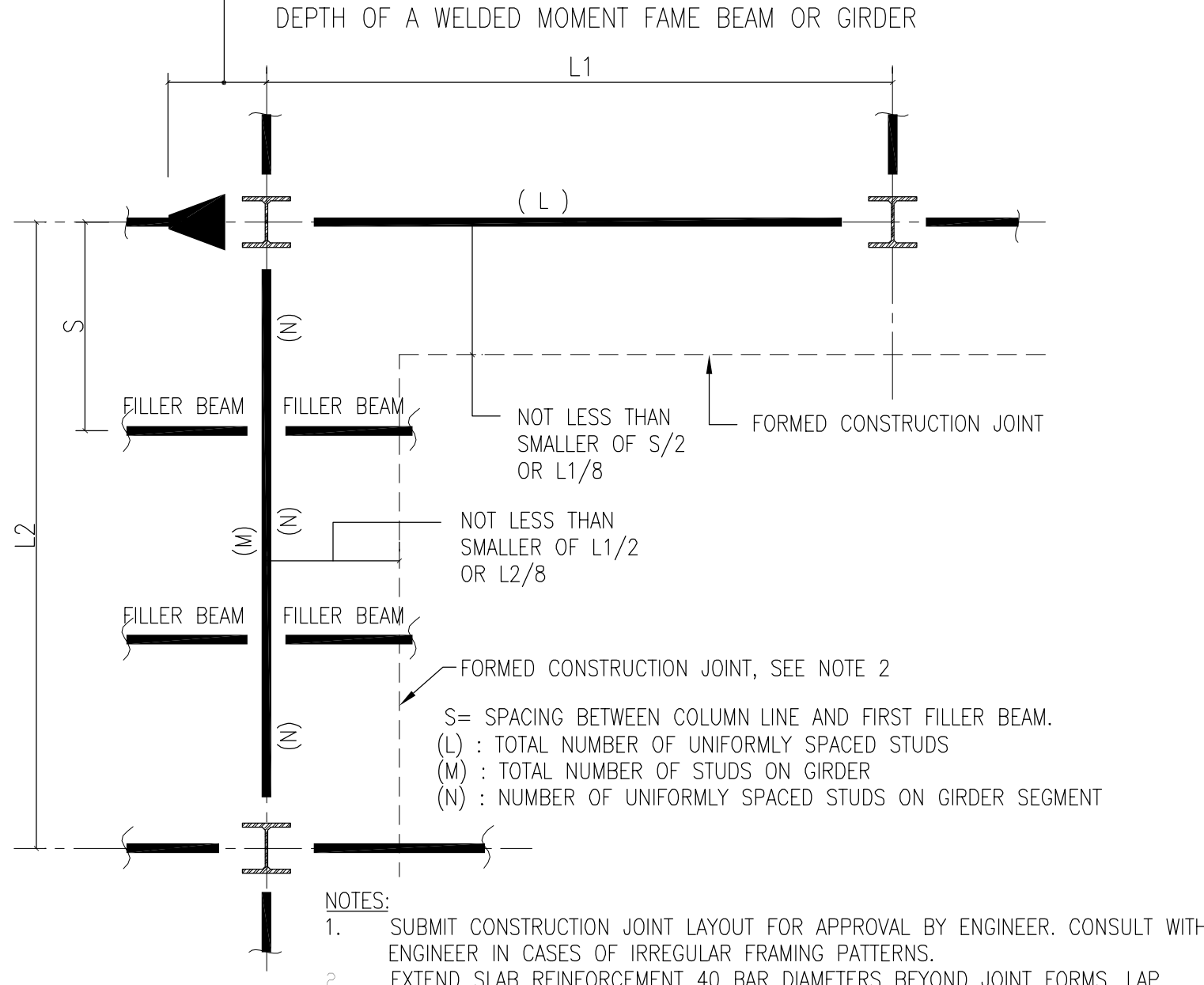
TS-15 TYPICAL REINFORCEMENT IN STEEL DECK SUPPORTED SLABS
3/4" = 1'-0"



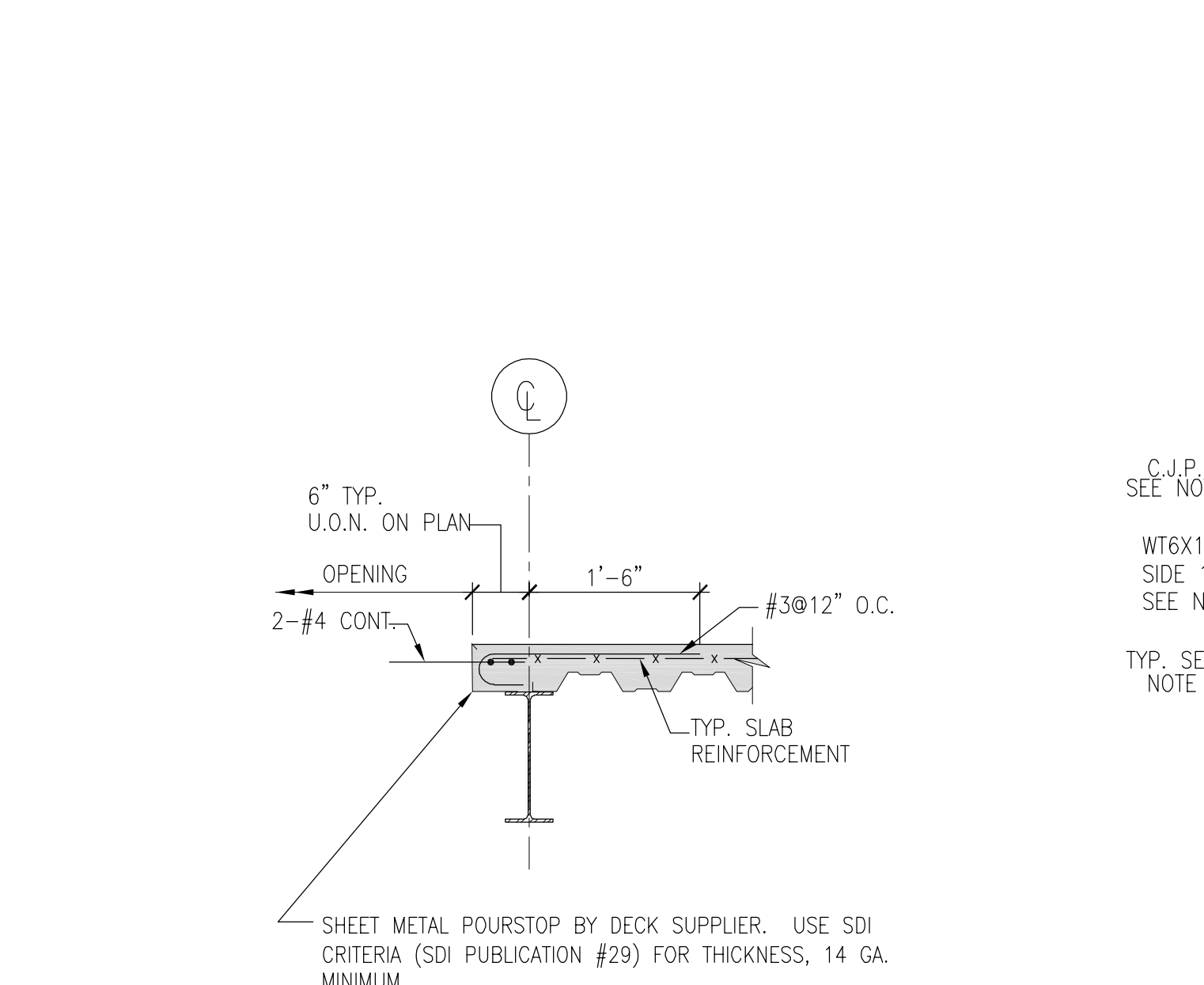
TS-16 DECK SUPPORT AT MOMENT CONNECTION AT COLUMN
3/4" = 1'-0"



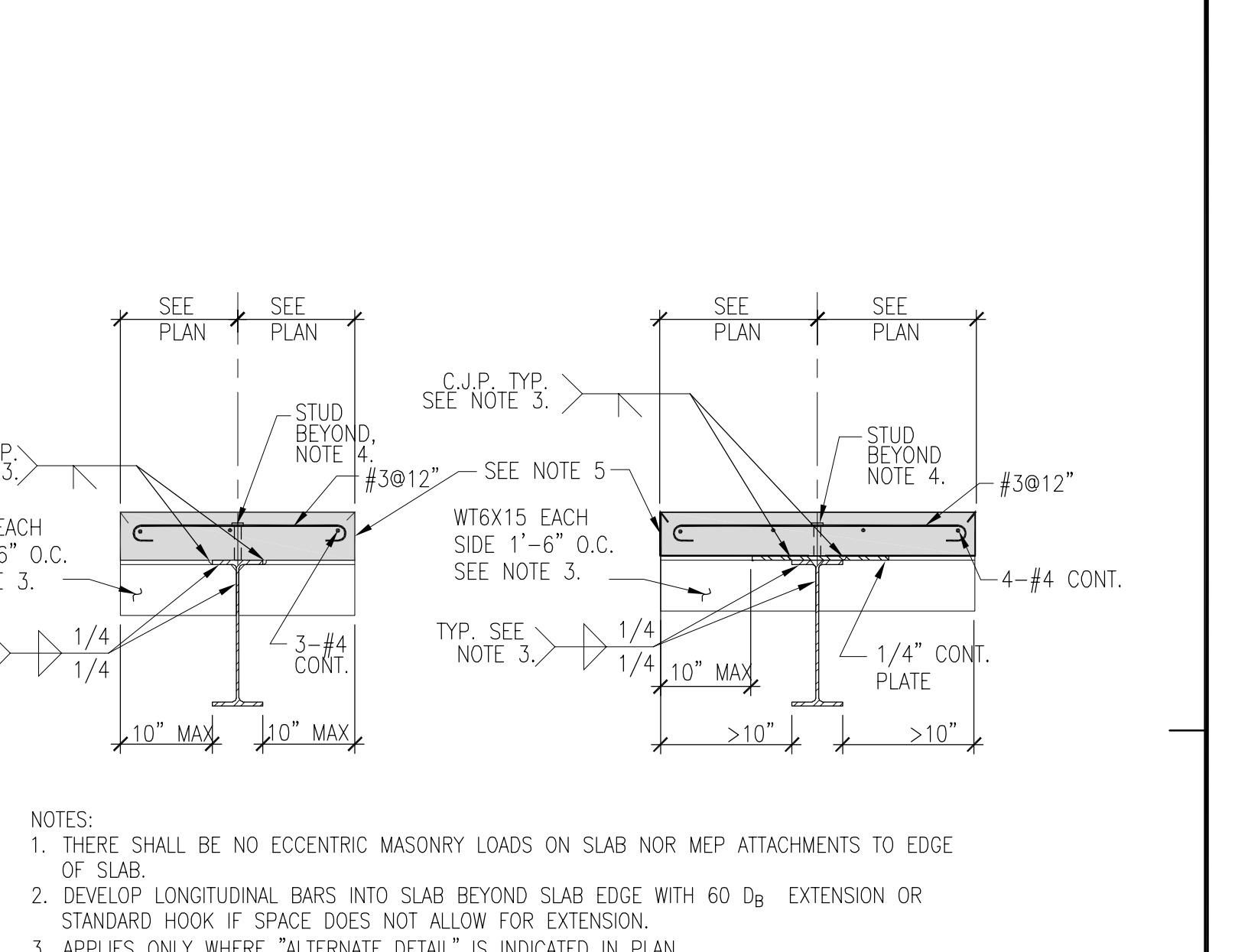
TS-17 DECK SUPPORT AT PERIMETER COLUMNS
3/4" = 1'-0"



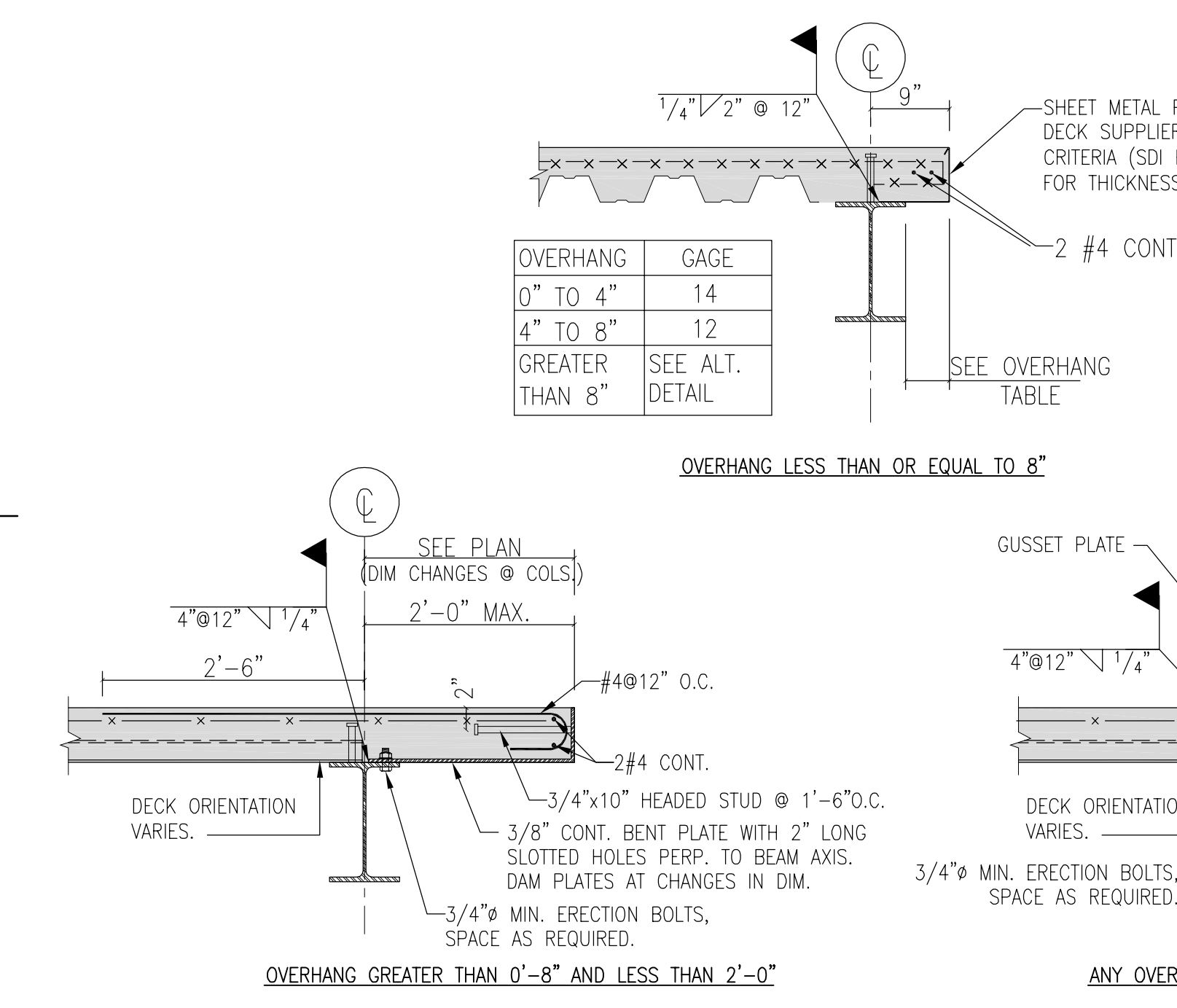
TS-18 CONSTRUCTION JOINT AND SHEAR STUD LAYOUT
3/4" = 1'-0"



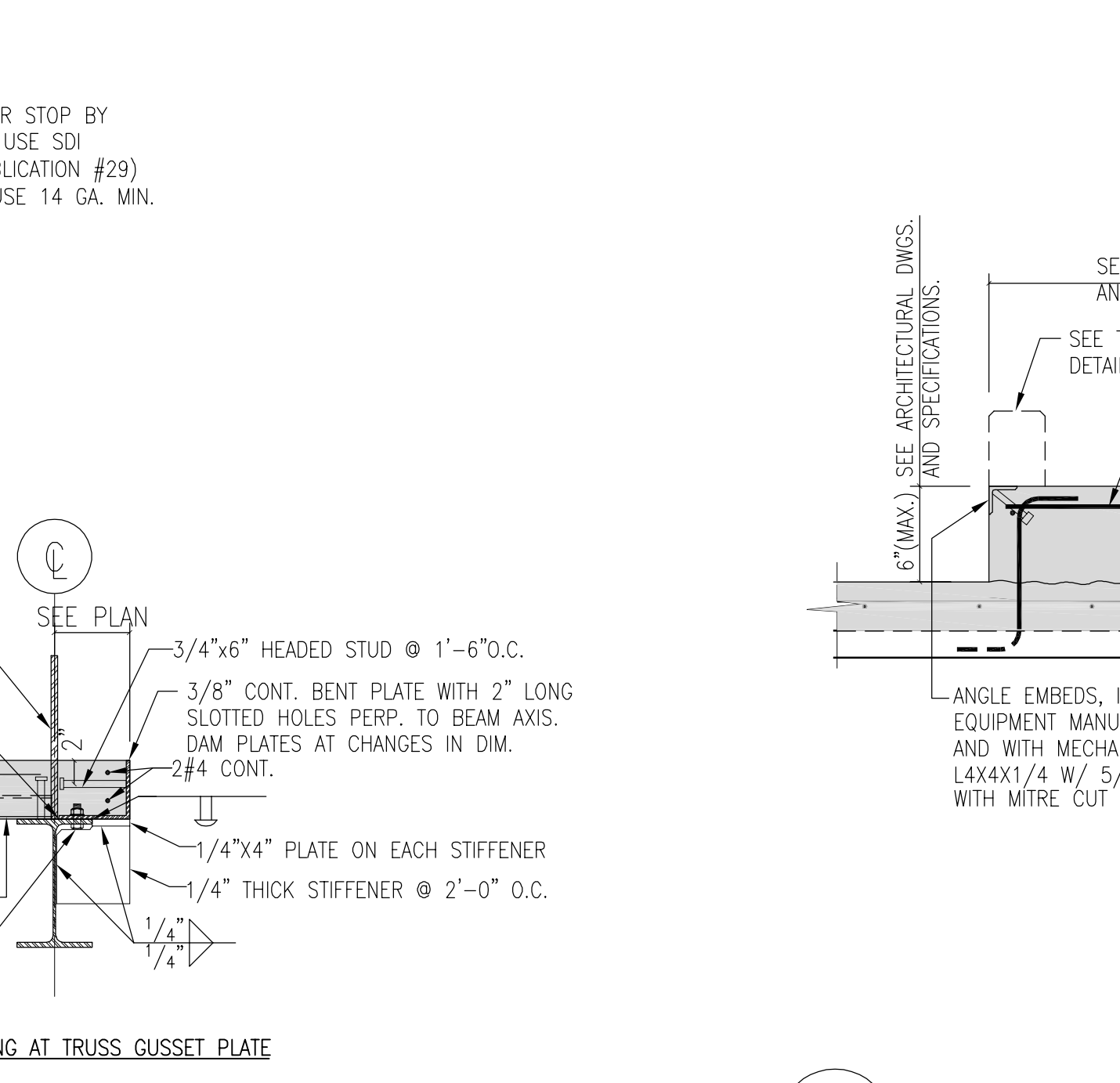
TS-19 SLAB EDGE AT FLOOR OPENING ON ONE SIDE OF BEAM
3/4" = 1'-0"



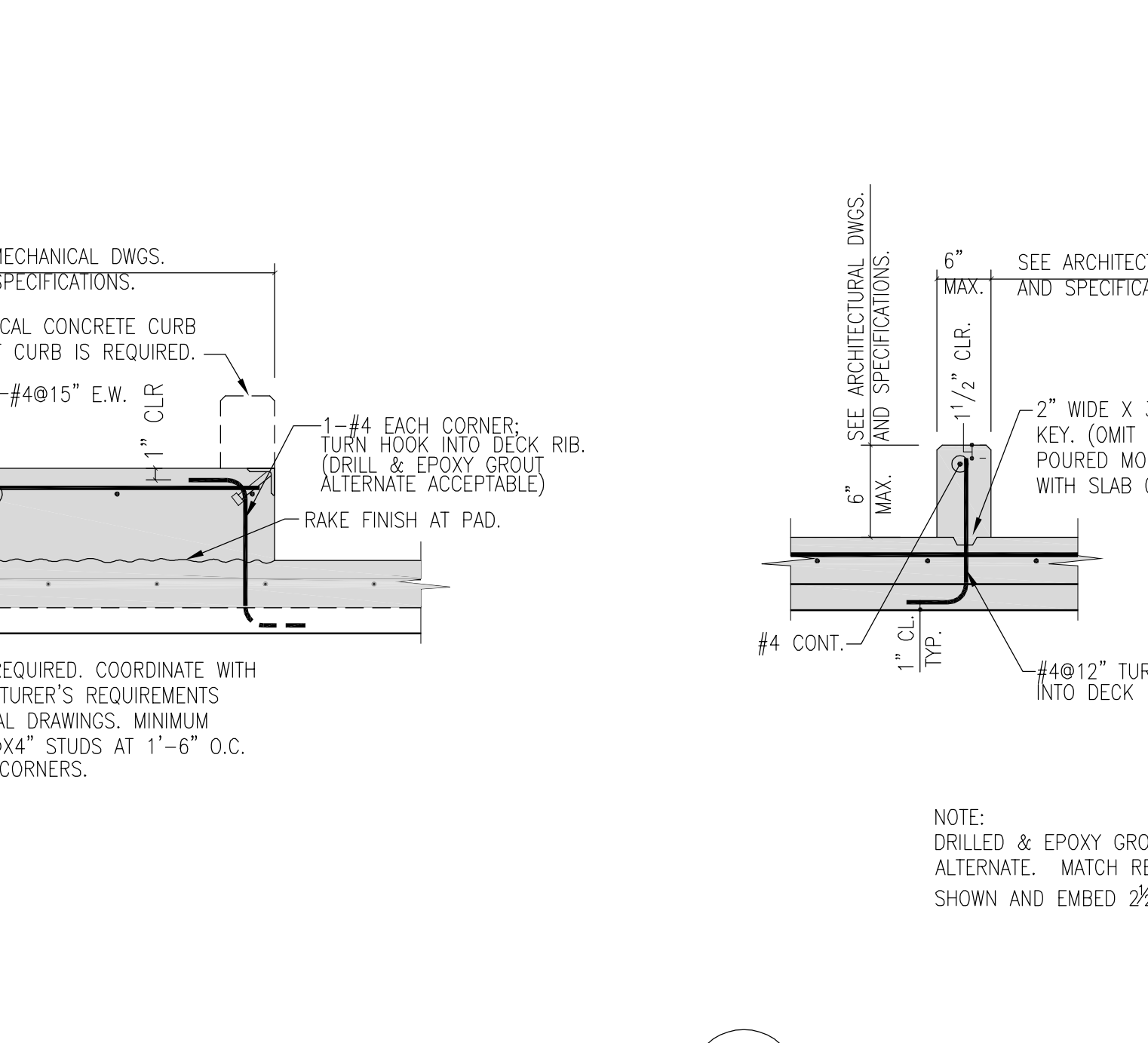
TS-20 FLOOR OPENING ON BOTH SIDES OF BEAM
3/4" = 1'-0"



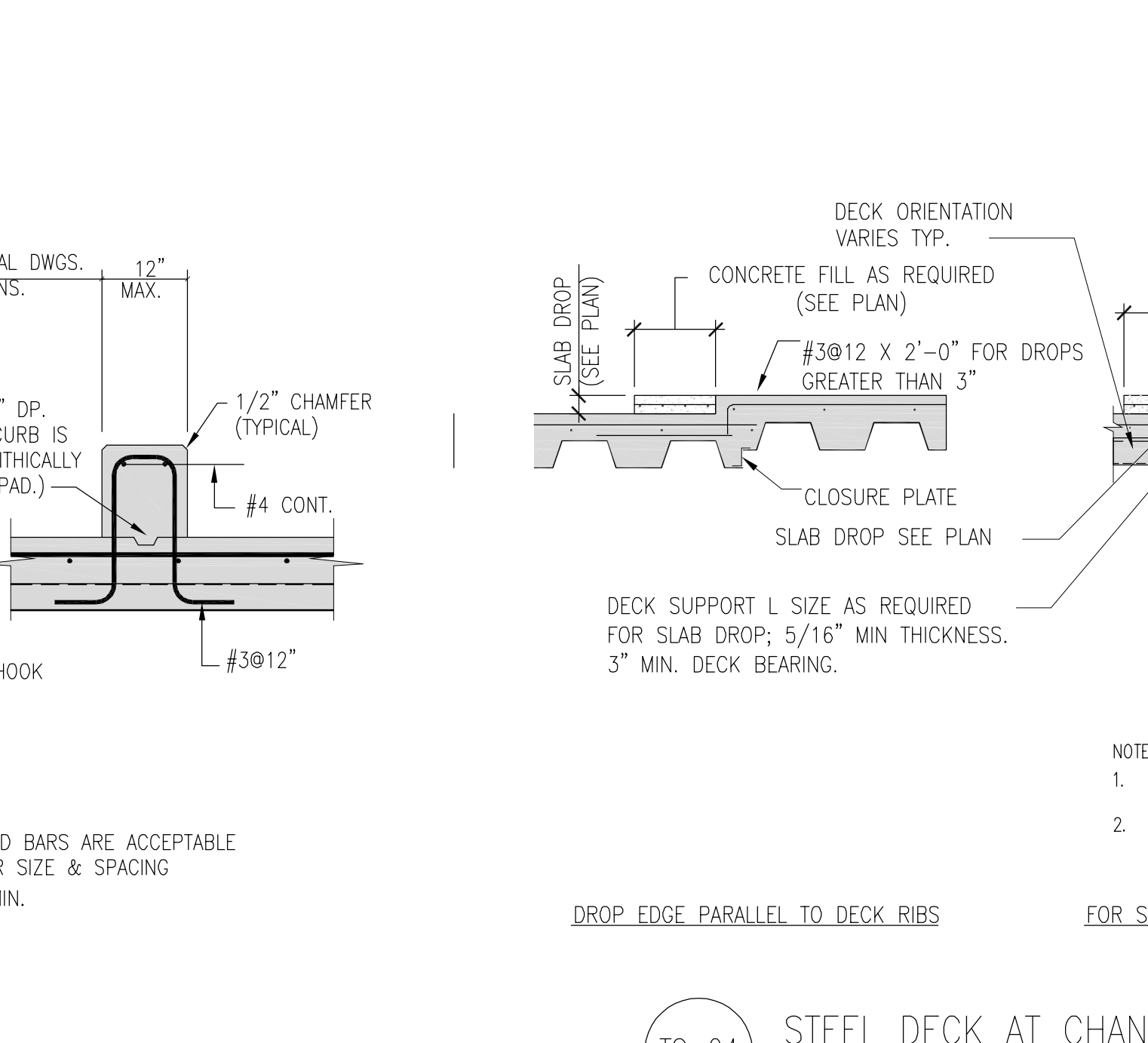
TS-21 TYPICAL SLAB EDGE SUPPORT DETAILS
3/4" = 1'-0"



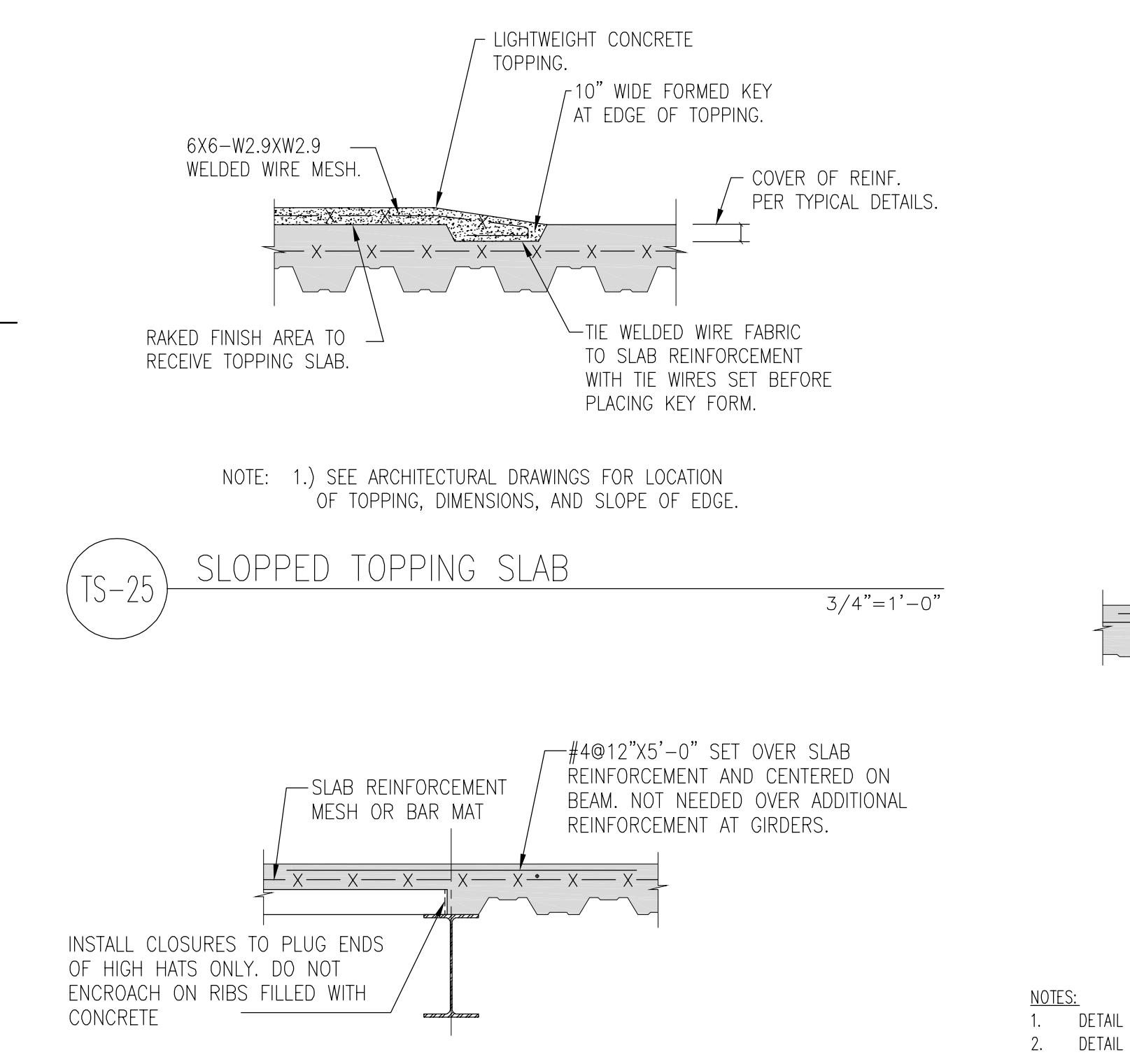
TS-22 HOUSEKEEPING PAD ON COMPOSITE SLAB DETAIL
3/4" = 1'-0"



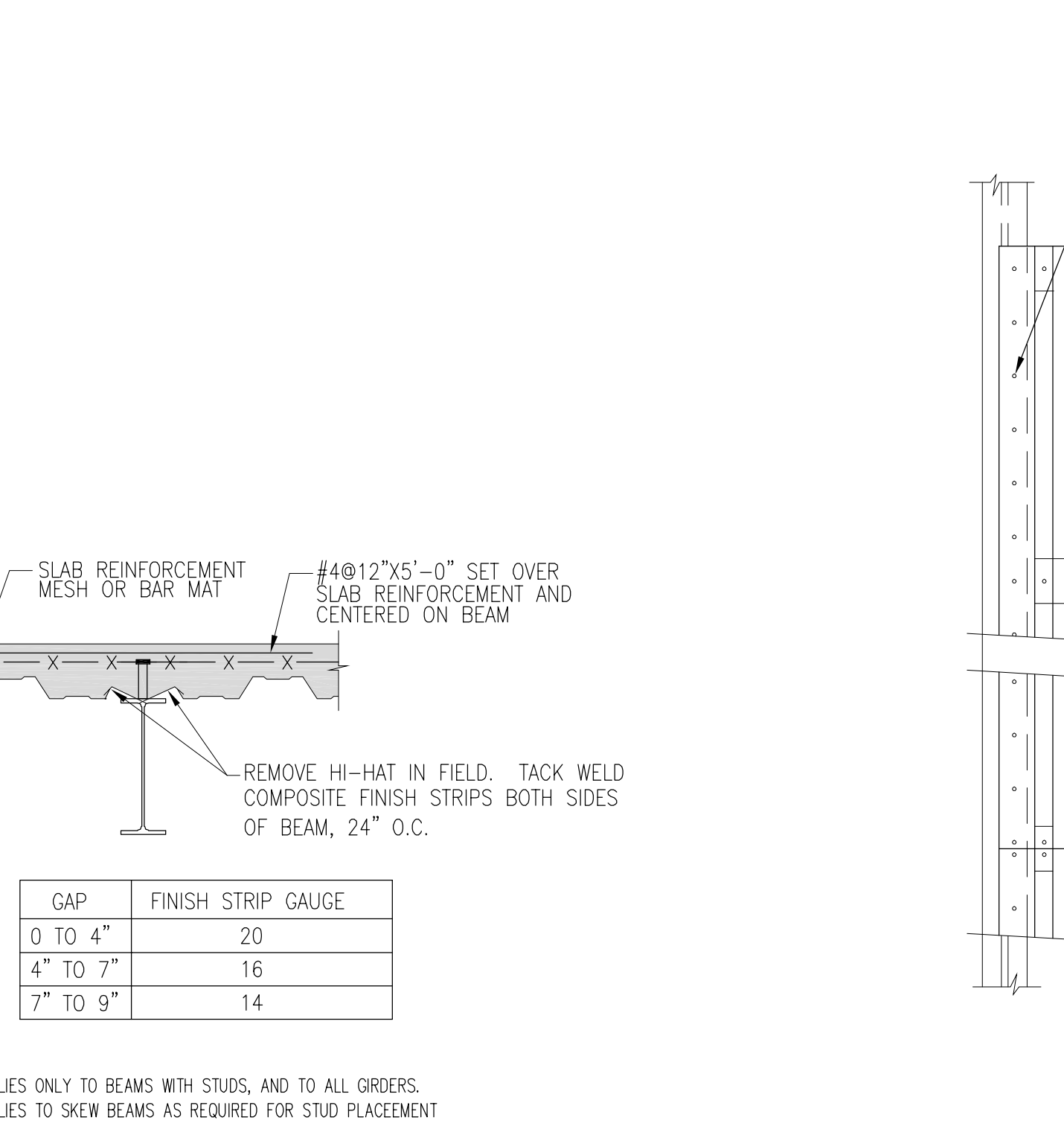
TS-23 CONCRETE CURB ON COMPOSITE SLAB DETAIL
3/4" = 1'-0"



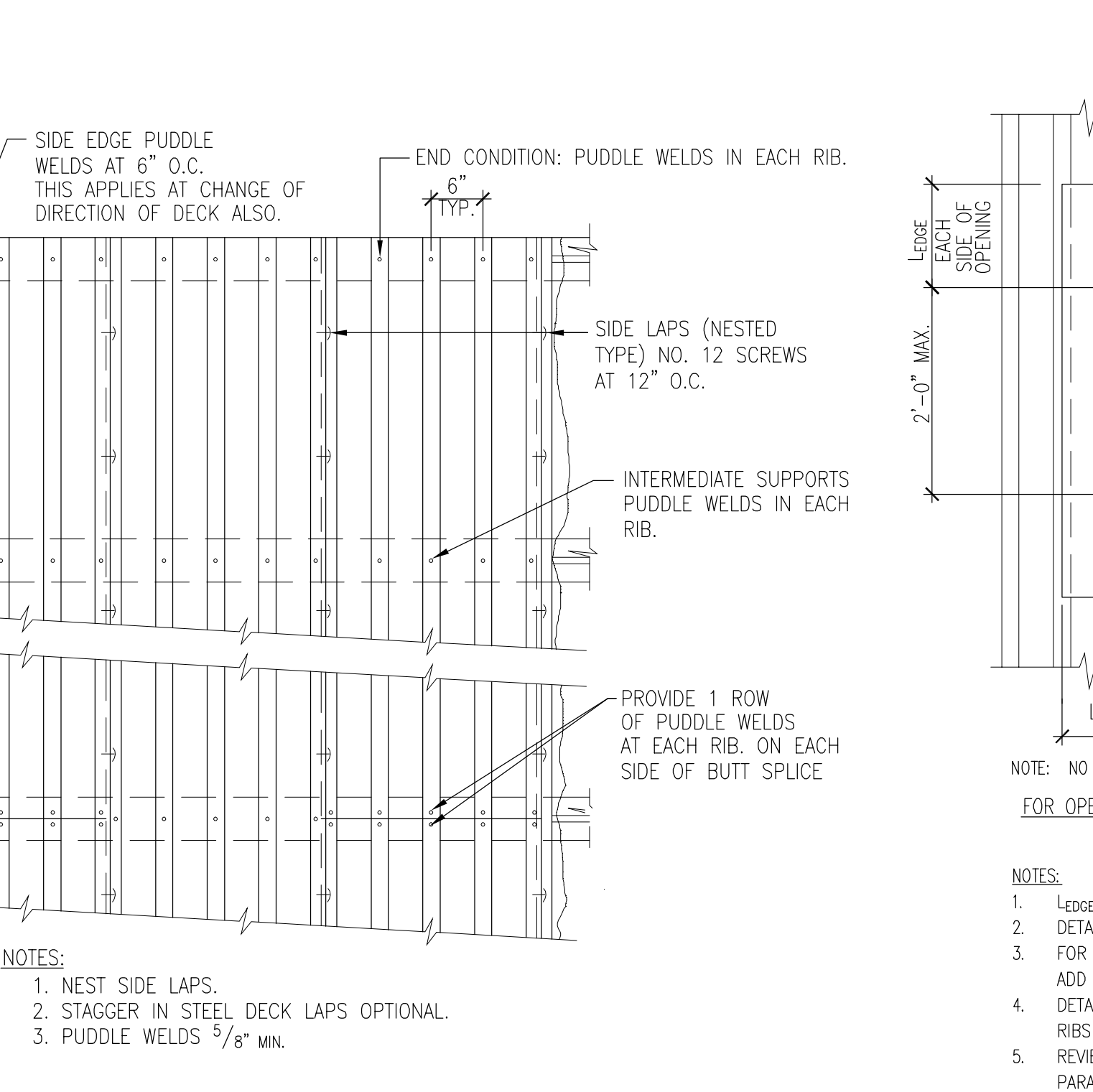
TS-24 STEEL DECK AT CHANGES IN SLAB ELEVATION OR THICKNESS
3/4" = 1'-0"



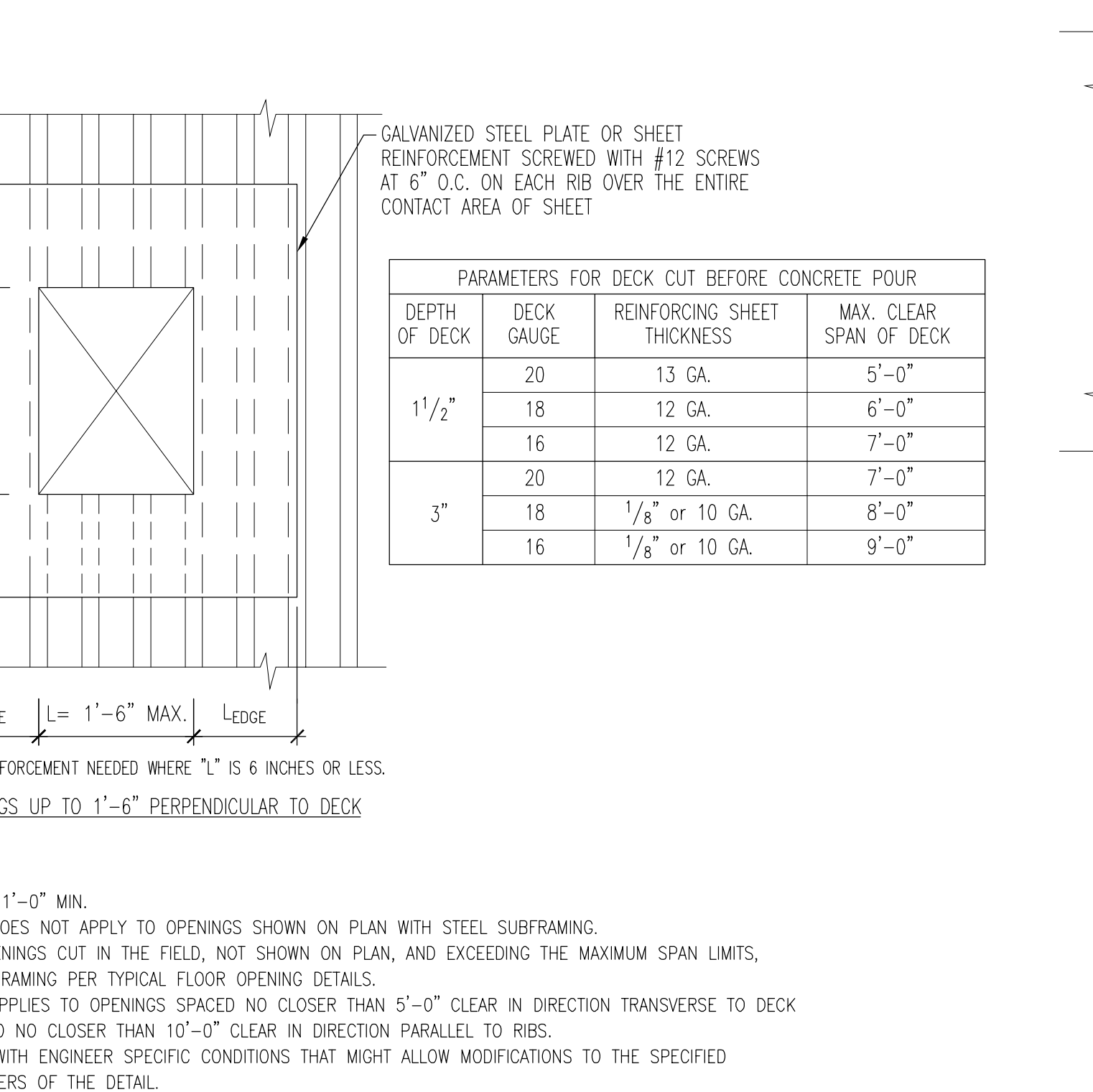
TS-25 SLOPPED TOPPING SLAB
3/4" = 1'-0"



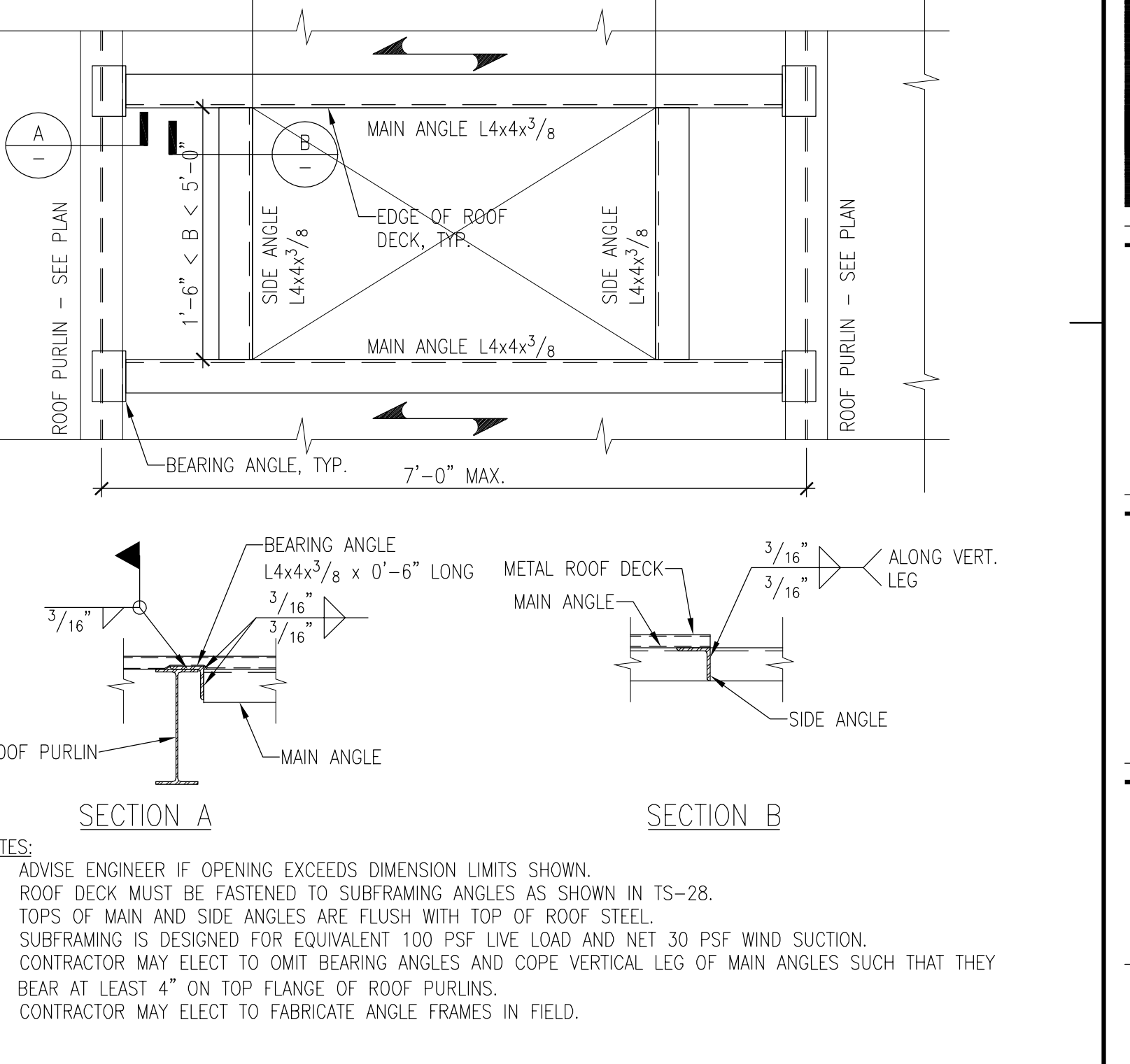
TS-26 STEEL DECK DIRECTION CHANGE DETAIL
3/4" = 1'-0"



TS-27 STEEL DECK PARALLEL TO STEEL SUPPORT DETAIL
3/4" = 1'-0"



TS-28 FASTENING PATTERN FOR 1 1/2" METAL ROOF DECK
3/4" = 1'-0"



TS-29 ROOF DECK OPENING REINFORCEMENT
3/4" = 1'-0"

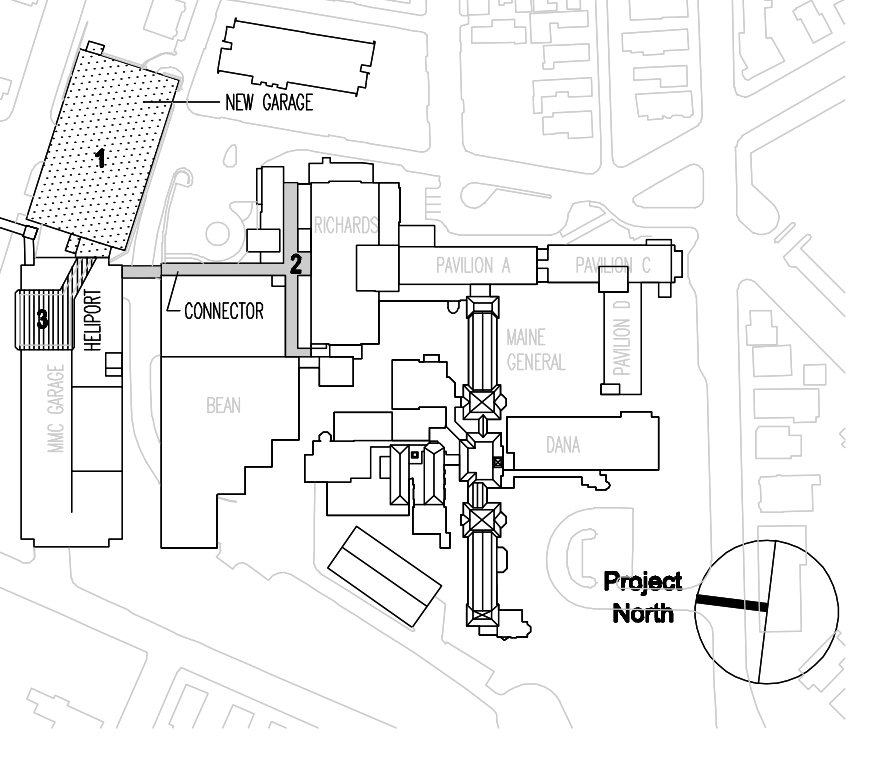
SGH
Simpson Gumpertz & Heger Inc.
Consulting Engineers

Boston, MA 41 Bayon Street, Suite 500
Telephone: (781) 907 9000
Facsimile: (781) 907 9009

San Francisco, CA The Landmark at One Market, Suite 600
Telephone: (415) 498 3700
Facsimile: (415) 498 3550

Washington, DC 1885 Ploard Drive, Suite 225
Telephone: (301) 417 0999
Facsimile: (301) 417 9825

MARK	ISSUE DATE	DESCRIPTION
PERMIT	09/16/04	PERMIT SET
BID	08/26/04	BID SET



TRO
ARCHITECTURAL PLANNING ENGINEERING INTERIOR DESIGN
The Ritchie Organization
80 Bridge Street
Newton, MA 02458-1154
617-869-9400

Maine Medical Center
Pkg F - Garage / Vault / Conn / Heliport
Portland, ME MMC Project No. 21845

Drawing Title: **TYPICAL STEEL DETAILS (SHEET 2 OF 2)**

Commission No. 4678 Date Issued 08/28/04
Scale 3/4" = 1'-0" Sheet Number **PKG-F S103**

Drawn By SWW
Approved By JHT/JUZ
Checked By
Date

Copyright © 2004 The Ritchie Organization