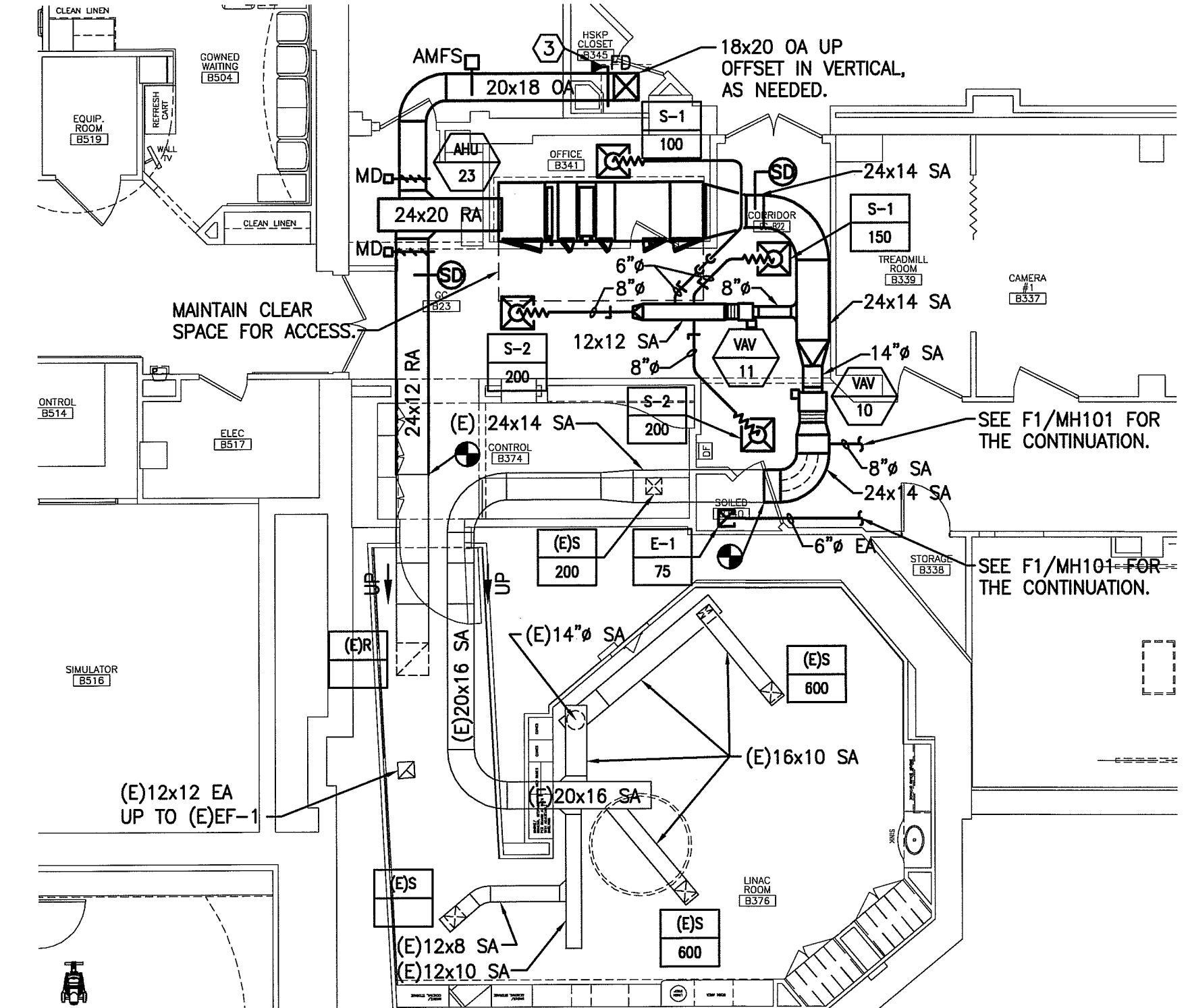


F1 HVAC PLAN

1/4"=1'-0"



A1 HVAC PART PLAN

1/4"=1'-0"

NOTE:

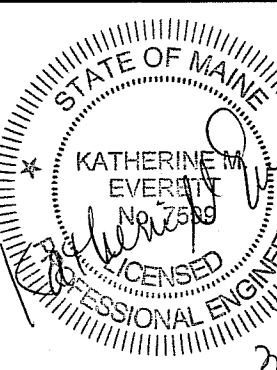
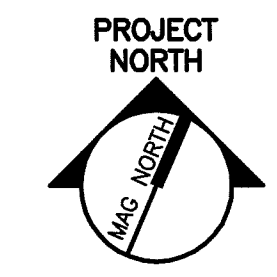
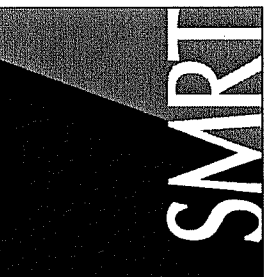
- SEE SHEET M-001 FOR LEGEND AND ABBREVIATIONS.
- RETURN ALL EXISTING DIFFUSERS BACK TO PRE-CONSTRUCTION TAB. ORIGINAL DESIGN VALUES ARE INDICATED FOR REFERENCE.

KEYED NOTES:

- 6x8 EA TRANSITION IN VERTICAL TO 12x6. DROP TO 6" AFF.
- PROVIDE COLD-FORMED STEEL SUPPORT STAND TO ELEVATE EXHAUST FAN ABOVE CHILLER BARREL. STAND IS TO BE CONSTRUCTED WITH A MINIMUM OF FOUR LEGS WITH PERMANENTLY ATTACHED BASE PLATES. PLATES ARE TO BE POSITIVELY ANCHORED TO THE SURFACE OF THE EXISTING CONCRETE SLAB. PROVIDE LATERAL BRACES AS REQUIRED TO ENSURE PROPER UNIT OPERATION, AND TO RESIST SEISMIC FORCES DESCRIBED IN SPECIFICATION SECTION.
- INSTALL FD VERTICALLY IN NEW WALL OF RATED CHASE.

144 Fore Street P.O. Box 618
Portland, Maine 04104
Tel: (207) 772-3846
Fax: (207) 772-1070
www.smtinc.com

ARCHITECTURE
ENGINEERING
PLANNING
INTERIOR DESIGN
COMMISSIONING



MAINE MEDICAL CENTER
NUCLEAR MEDICINE RENOVATIONS
PORTLAND, MAINE

ISSUED FOR CONSTRUCTION
3-13-14

CURRENT ISSUE STATUS:

REV	DESCRIPTION	DATE
0 <td>ISSUED FOR CONSTRUCTION</td> <td>3-13-14</td>	ISSUED FOR CONSTRUCTION	3-13-14

GRAPHIC SCALE:
0" 1"

SCALE: 1/4"=1'-0"
PROJECT MANAGER: DIV
JC/DRAWN BY: FV
A/E OF RECORD: KMB
CAD FILE: MH101-13128
PROJECT NO: 13128
DATE: 3-13-14
SHEET TITLE:

HVAC PLAN

SHEET No.
MH101