

A1 FLOOR PLAN
1/2"=1'-0"

NOTE:

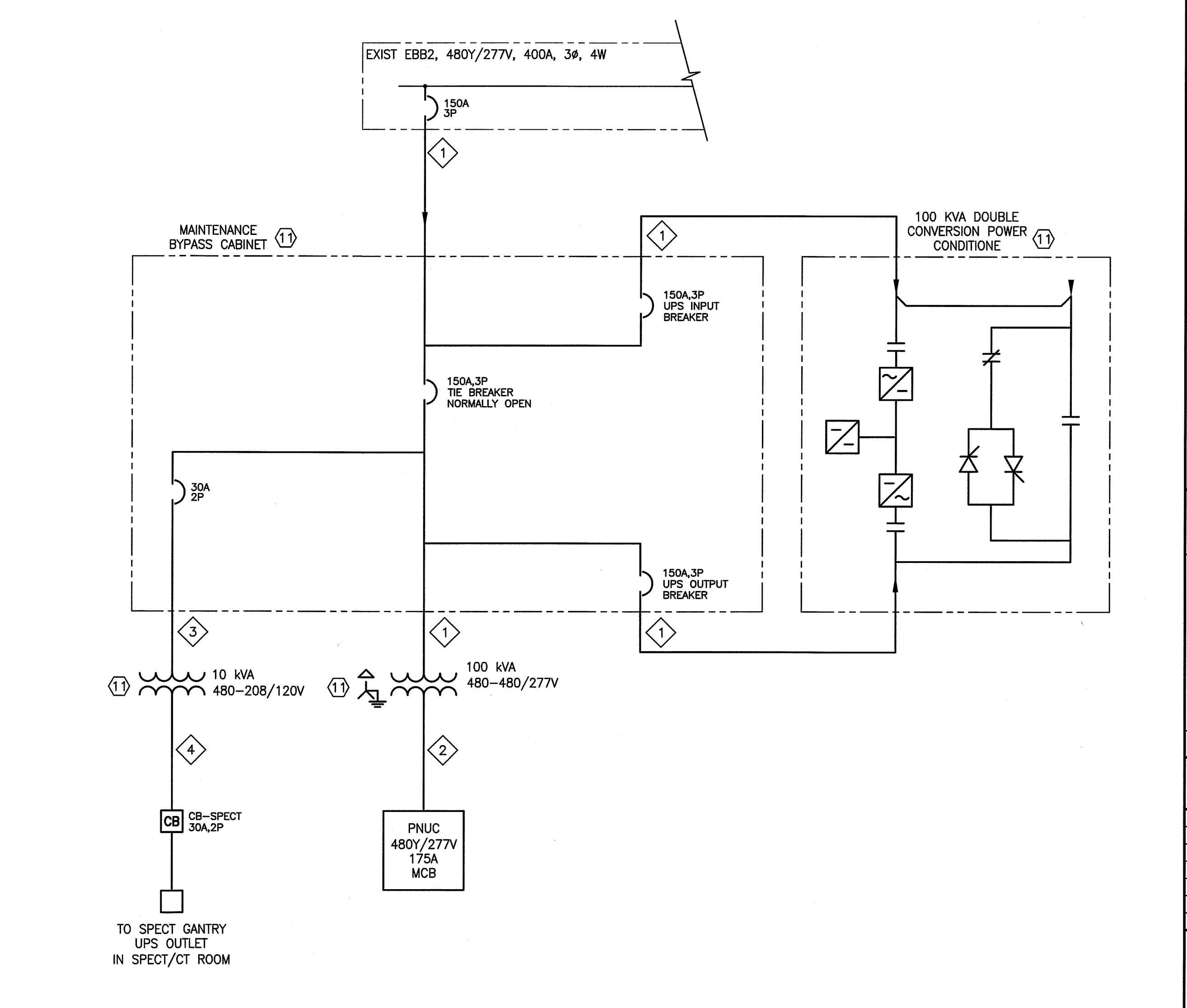
1. SEE SHEET E-001 FOR LEGEND AND GENERAL NOTES.

CABLE SCHEDULE:

- 1 3#2/0 AWG & #4 GND, 2" C
- 2 4#1/0 AWG & #6 GND, 2" C
- 3 2#10 AWG & #10 GND, 3/4" C
- 4 3#10 AWG & #10 GND, 3/4" C

KEYED NOTES:

- 1 FURNISH & INSTALL A 6" x 2" RECESSED FLOOR DUCT WITH WEATHERPROOF REMOVABLE COVER AND TWO METAL DIVIDERS.
- 2 INSTALL MAIN CIRCUIT BREAKER PANEL FURNISHED BY SIEMENS. COORDINATE WITH OWNER AND EQUIPMENT VENDOR FOR EXACT LOCATION TO MOUNT PANEL.
- 3 FURNISH & INSTALL A 6" x 6" RECESSED FLOOR BOX WITH REMOVABLE COVER WITH A 3" ROUND GROMMETED OPENING. RUN 3/4" PVC CONDUIT BETWEEN BOXES RECESSED IN SLAB.
- 4 FURNISH & INSTALL AN EMERGENCY OFF BUTTON MOUNTED IN A SINGLE GANG BOX MOUNTED 60" AFF. COORDINATE WITH SIEMENS FOR TYPE OF EMERGENCY OFF BUTTON REQUIRED.
- 5 FURNISH & INSTALL A 18" SQUARE, 4" DEEP PULL BOX FLUSH MOUNTED IN WALL AT FLOOR LINE.
- 6 FURNISH & INSTALL A 18" SQUARE, 4" DEEP PULL BOX FLUSH MOUNTED IN WALL AT FLOOR LINE WITH TWO STEEL DIVIDERS. PULL BOX TO SHALL PROVIDE FULL AND CLEAR ACCESS TO RECESSED FLOOR DUCT.
- 7 INSTALL SPECT UPS SUPPLIED BY SIEMENS AND FEED FROM CIRCUIT BREAKER CB-SPECT LOCATED IN B535. RUN WIRING FROM THE UPS TO WALL OUTLET DESCRIBED IN KEY NOTE 9. COORDINATE EXACT MOUNTING LOCATION WITH OWNER AND SIEMENS PRIOR TO ROUGH IN.
- 8 CONDUIT TO RUN TO 4"x6" OPENING "B" IN FLOOR DUCT RUN VIA CONDUIT TO PULL BOX DESCRIBED IN KEY NOTE 6 AND THEN IN FLOOR DUCT DESCRIBED IN KEY NOTE 1 TO THE OPENING OR UNDER SLAB TO FLOOR DUCT.
- 9 CONDUIT TO RUN FROM UPS TO ONE OF THE UPS RECEPTACLES AND SECOND UPS RECEPTACLE TO BE FED FROM PPIA BYPASSING THE UPS. UPS RECEPTACLES TO BE A NEMA L14-30R AND BE FED WITH 3#10 AWG & #10 GND, 3/4" C.
- 10 FURNISH & INSTALL AN RF DOOR SWITCH RATED FOR 24 VOLTS AND 750 mA THAT IS NORMALLY OPEN WHEN DOOR IS OPEN.
- 11 POWER CONDITIONER, MAINTENANCE BYPASS PANEL, 10 KVA TRANSFORMER AND 100 KVA ISOLATION TRANSFORMER ARE TO BE SUPPLIED OWNER (THROUGH CPM POWER) AND INSTALLED BY CONTRACTOR - SEE PARTIAL ONE-LINE DIAGRAM ON THIS SHEET FOR WIRING BETWEEN COMPONENTS.
- 12 FURNISH & INSTALL AN LED IN USE LIGHT AND AN IN USE LIGHT 24V RELAY. MOUNT RELAY IN AN ENCLOSURE ABOVE THE CEILING OUTSIDE SPECT/CT ROOM. RELAY TO BE A RIB MODEL #RIB24Z OR APPROVED EQUAL. WARNING LIGHT TO BE FED FROM SAME CIRCUIT AS ROOM LIGHTS.



A10 ONE-LINE DIAGRAM
NONE

144 Fore Street/P.O. Box 618
Portland, Maine 04104
Tel: (207) 772-3846
Fax: (207) 772-1070
www.smrtinc.com

ARCHITECTURE
ENGINEERING
PLANNING
INTERIOR DESIGN
COMMISSIONING

SMART

PROJECT NORTH

STATE OF MAINE
Daniel J. Bobbitt
LICENSED PROFESSIONAL ENGINEER
9836
3/13/14

MAINE MEDICAL CENTER
NUCLEAR MEDICINE RENOVATIONS
PORTLAND, MAINE

ISSUED FOR CONSTRUCTION
3-13-14

REV	DESCRIPTION	DATE
0	ISSUED FOR CONSTRUCTION	3-13-14

GRAPHIC SCALE: 0" = 1'

SCALE: 1/2"=1'-0"

PROJECT MANAGER: DJV
JC/DRAWN BY: CDS
A/E OF RECORD: DJT
CAD FILE: EP401-13128
PROJECT NO: 13128
DATE: 3-13-14
SHEET TITLE:
ENLARGED POWER PLAN