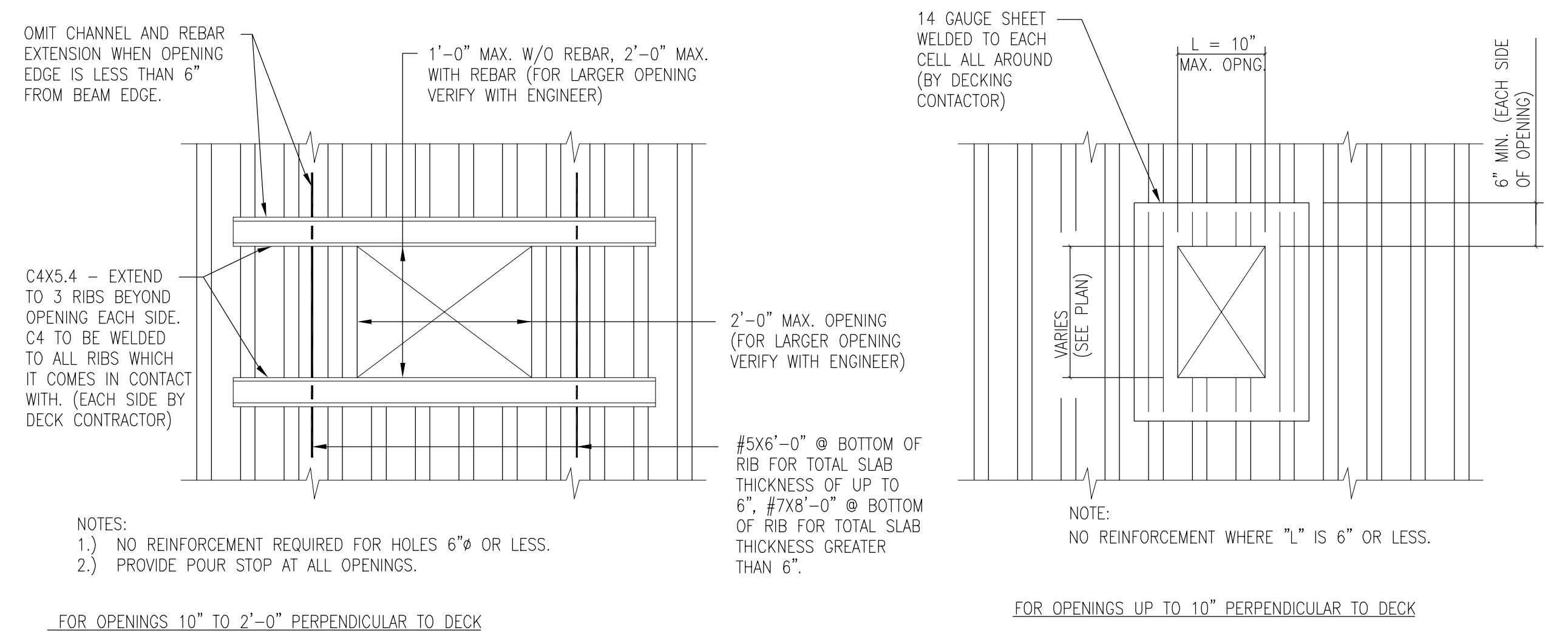
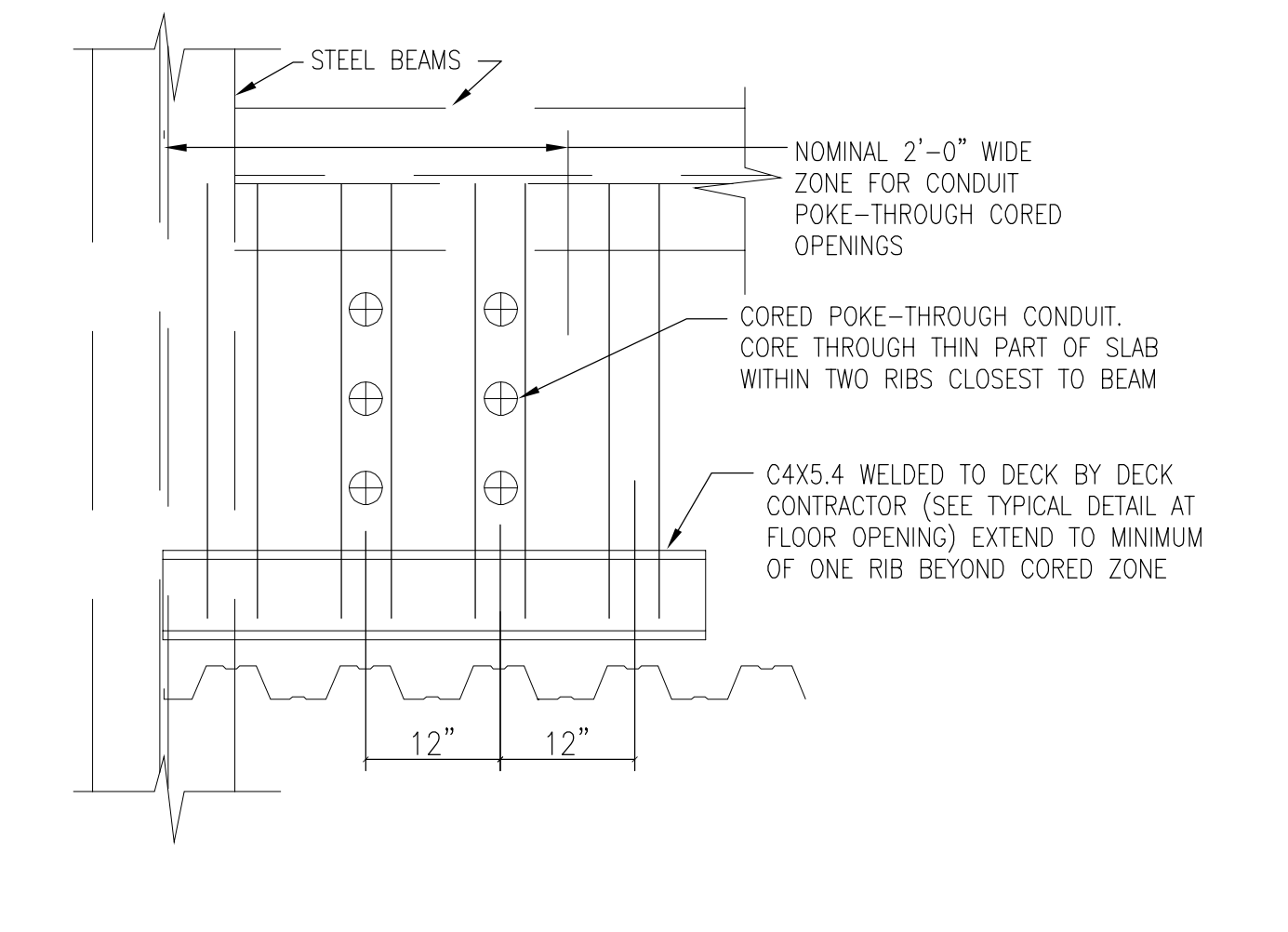


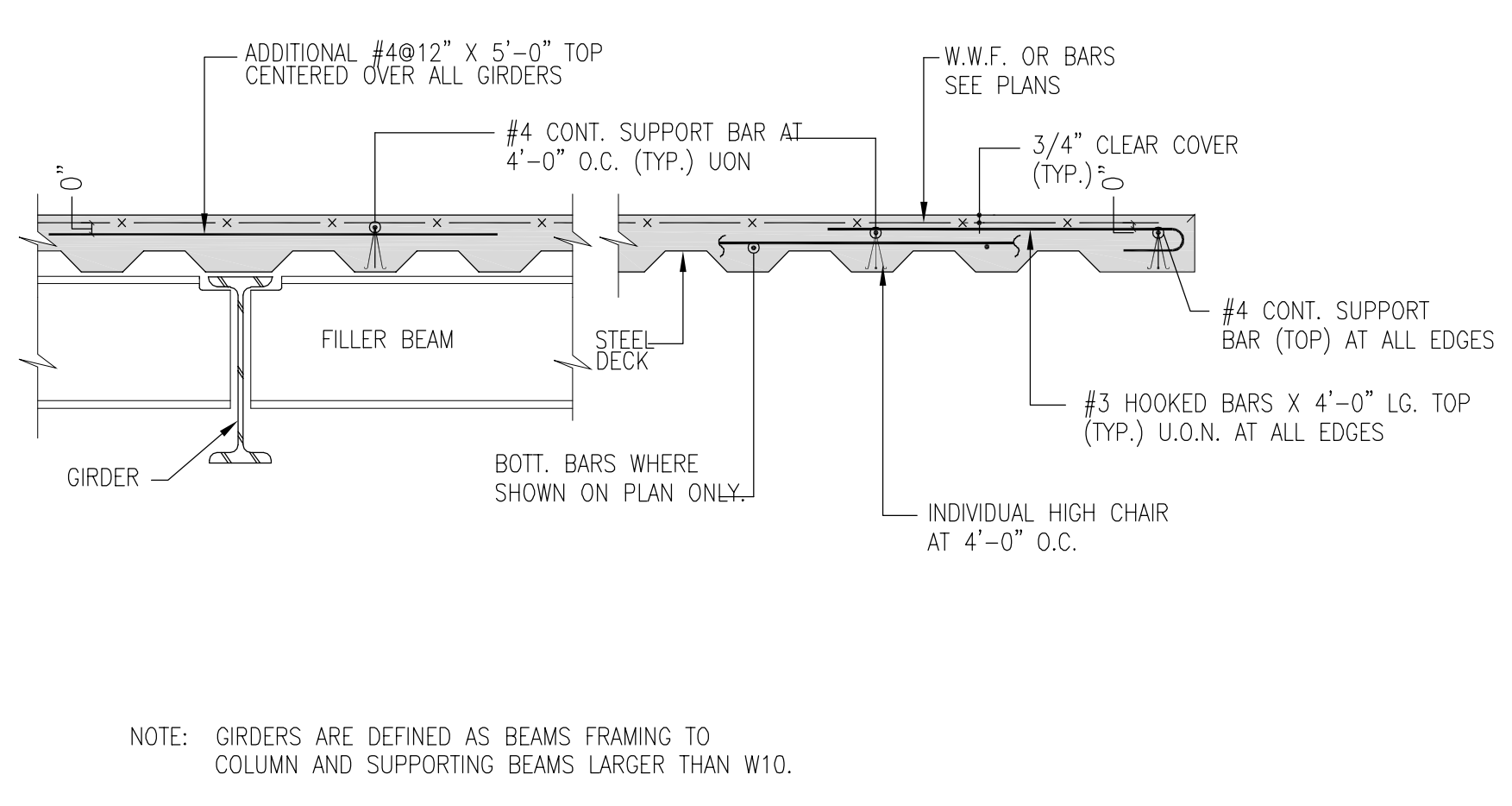
TS-13 TYPICAL FASTENING PATTERN FOR COMPOSITE METAL DECK 3/4"=1'-0"



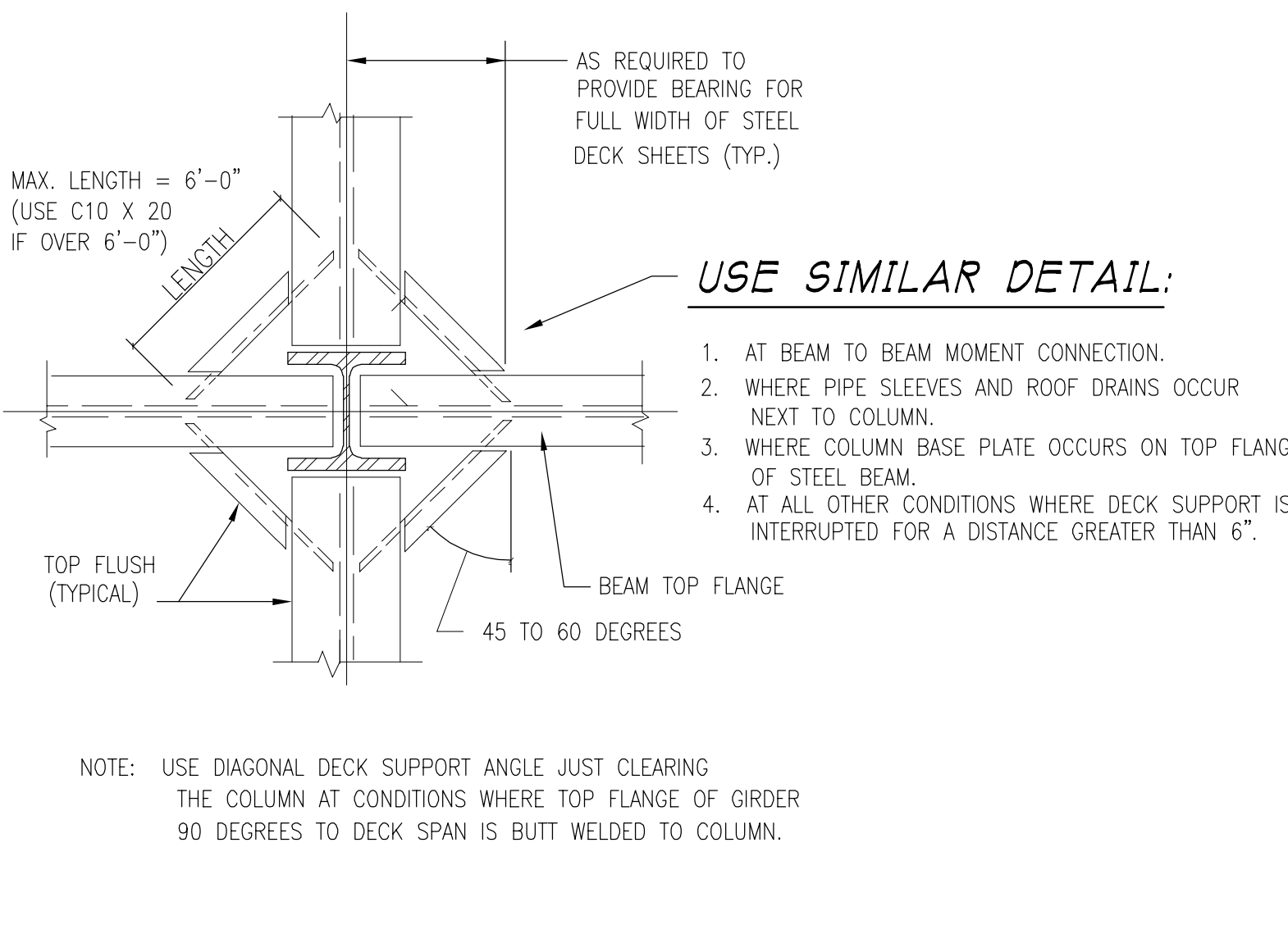
TS-14 TYPICAL FLOOR DETAILS AT OPENINGS 3/4"=1'-0"



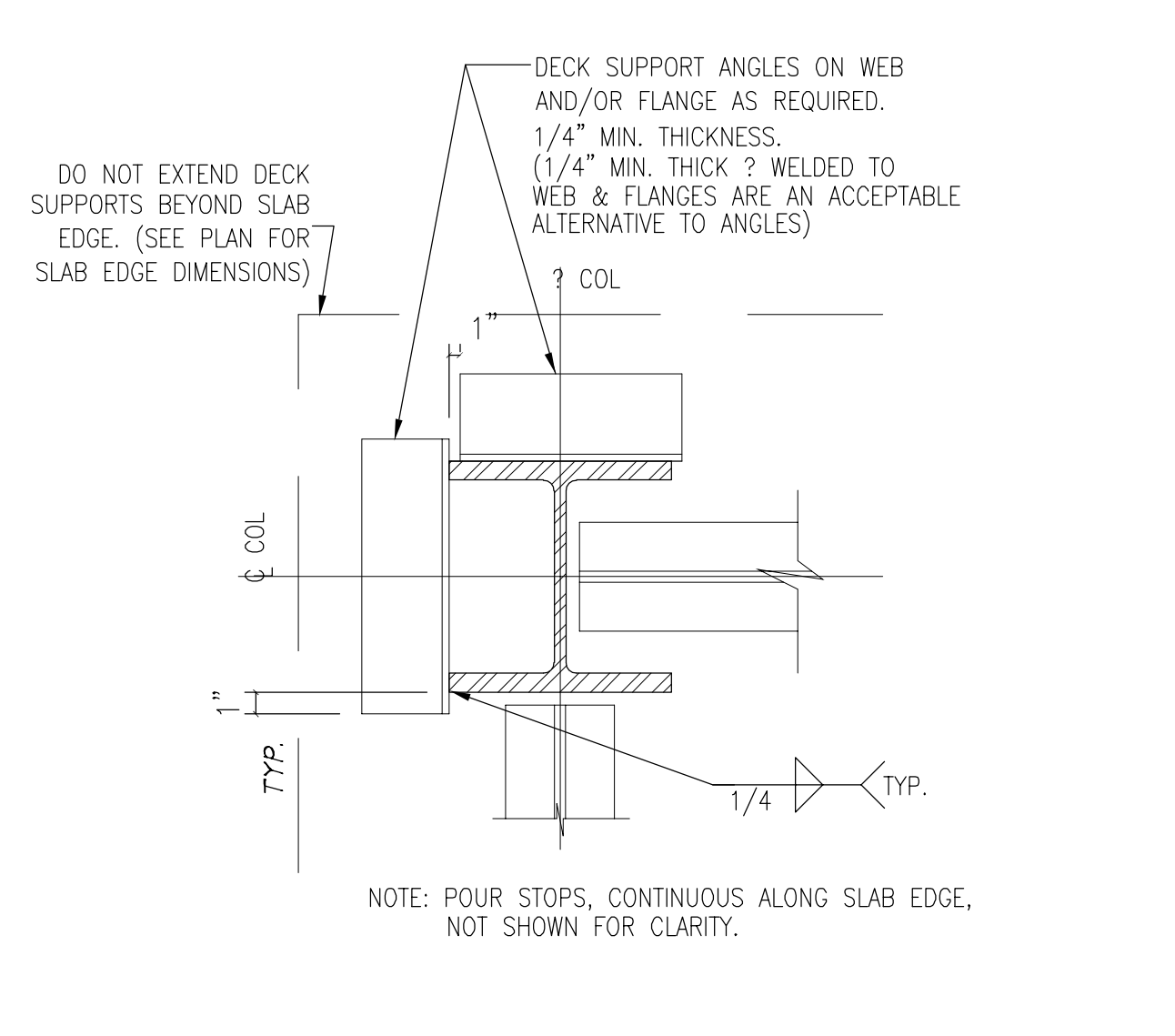
TS-15 DECK REINFORCEMENT @ ELEC./DATA/TELEPHONE ROOM CONDUIT BANK FLOOR PENETRATIONS 3/4"=1'-0"



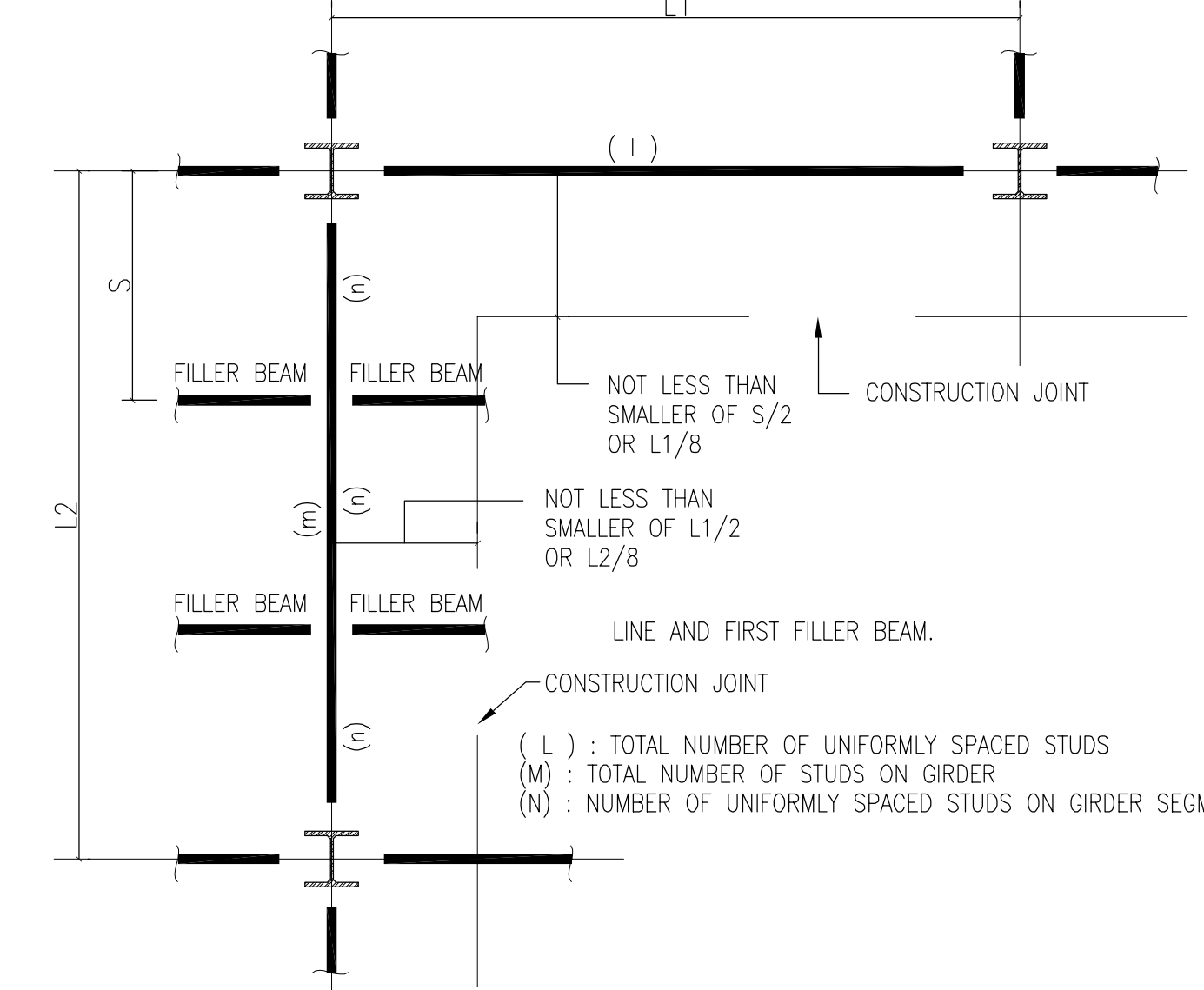
TS-16 TYPICAL COMPOSITE DECK SLAB DETAIL 3/4"=1'-0"



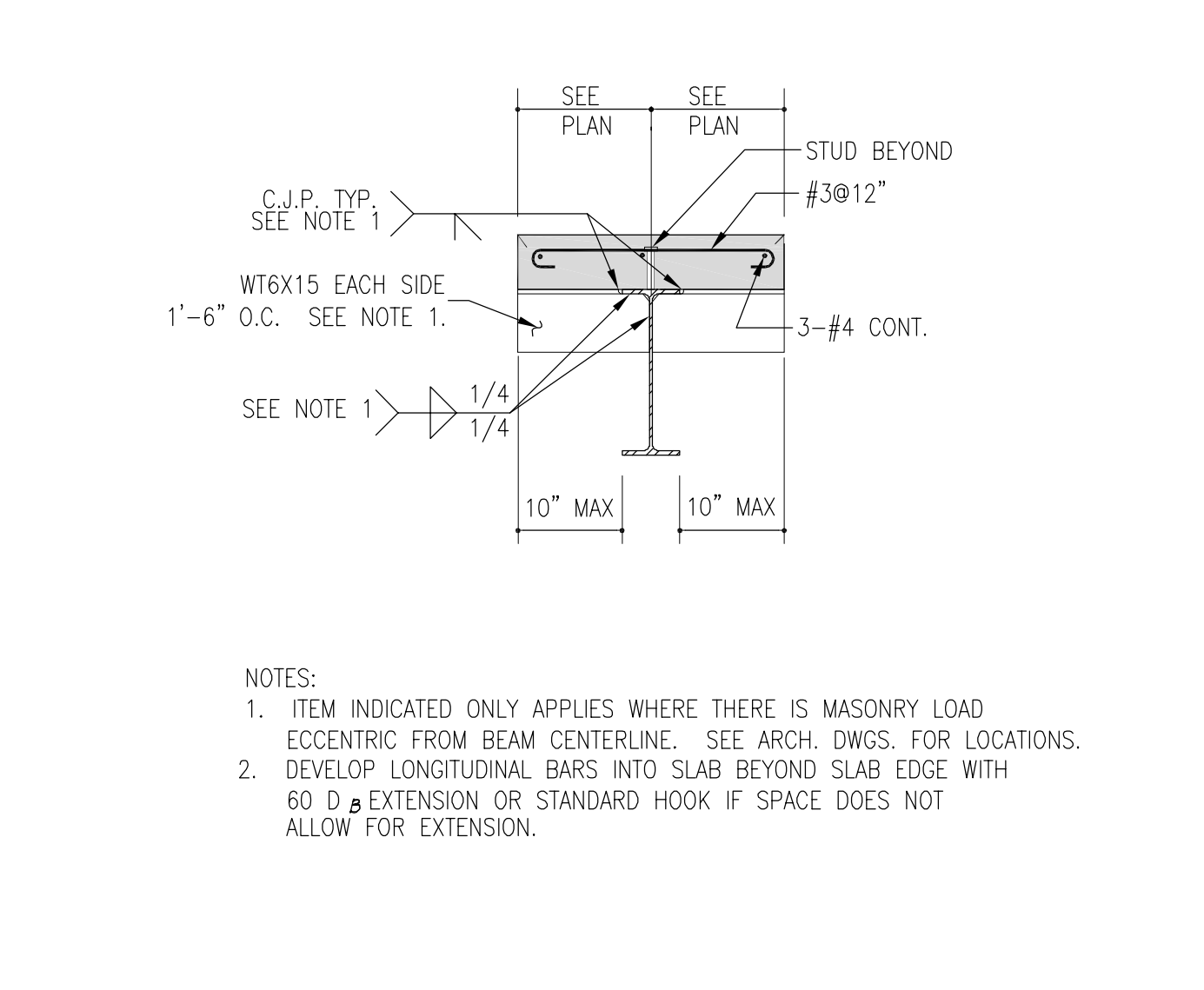
TS-17 DECK SUPPORT AT MOMENT CONNECTION AT COLUMN 3/4"=1'-0"



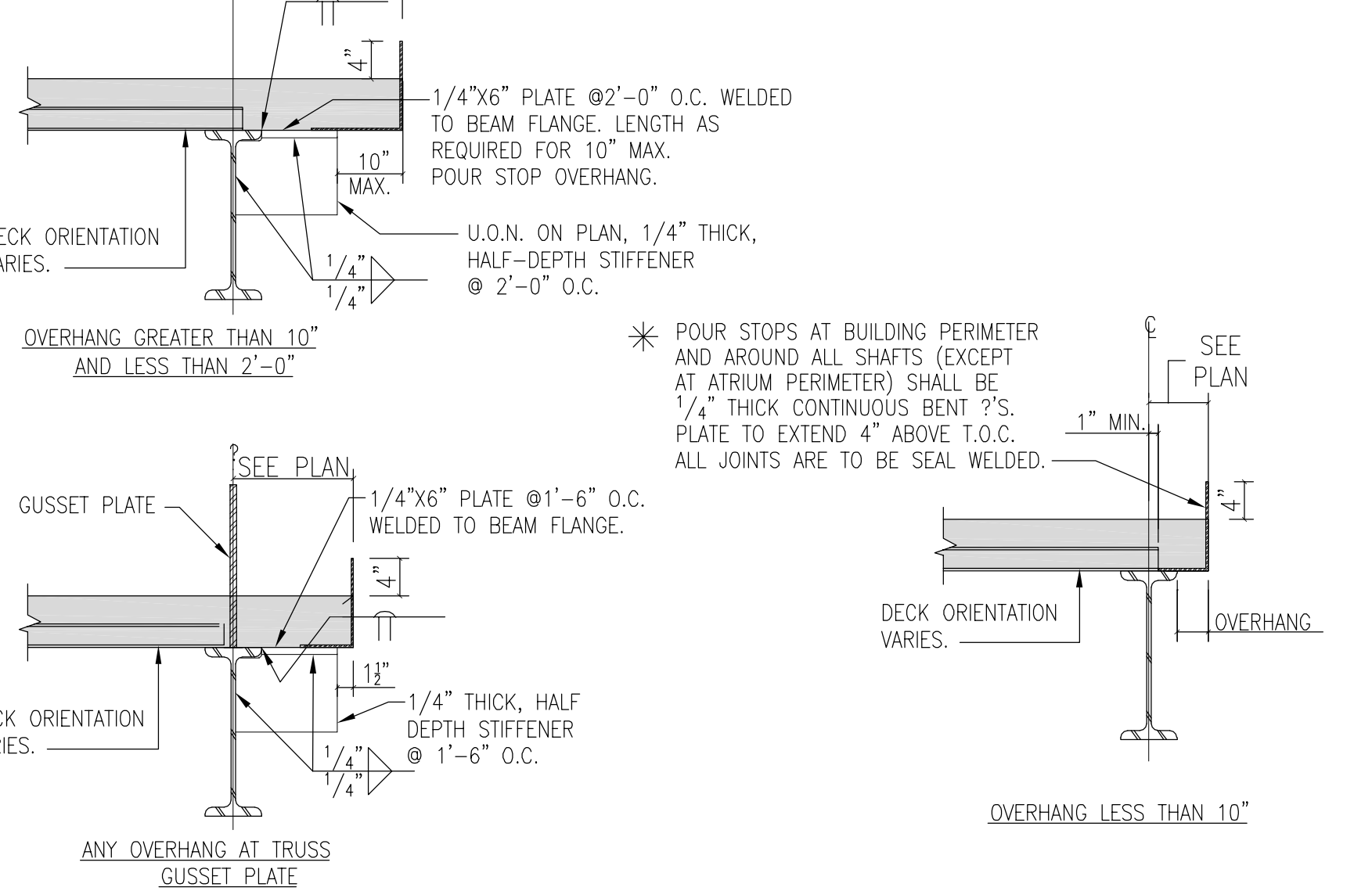
TS-18 DECK SUPPORT AT PERIMETER COLUMNS 3/4"=1'-0"



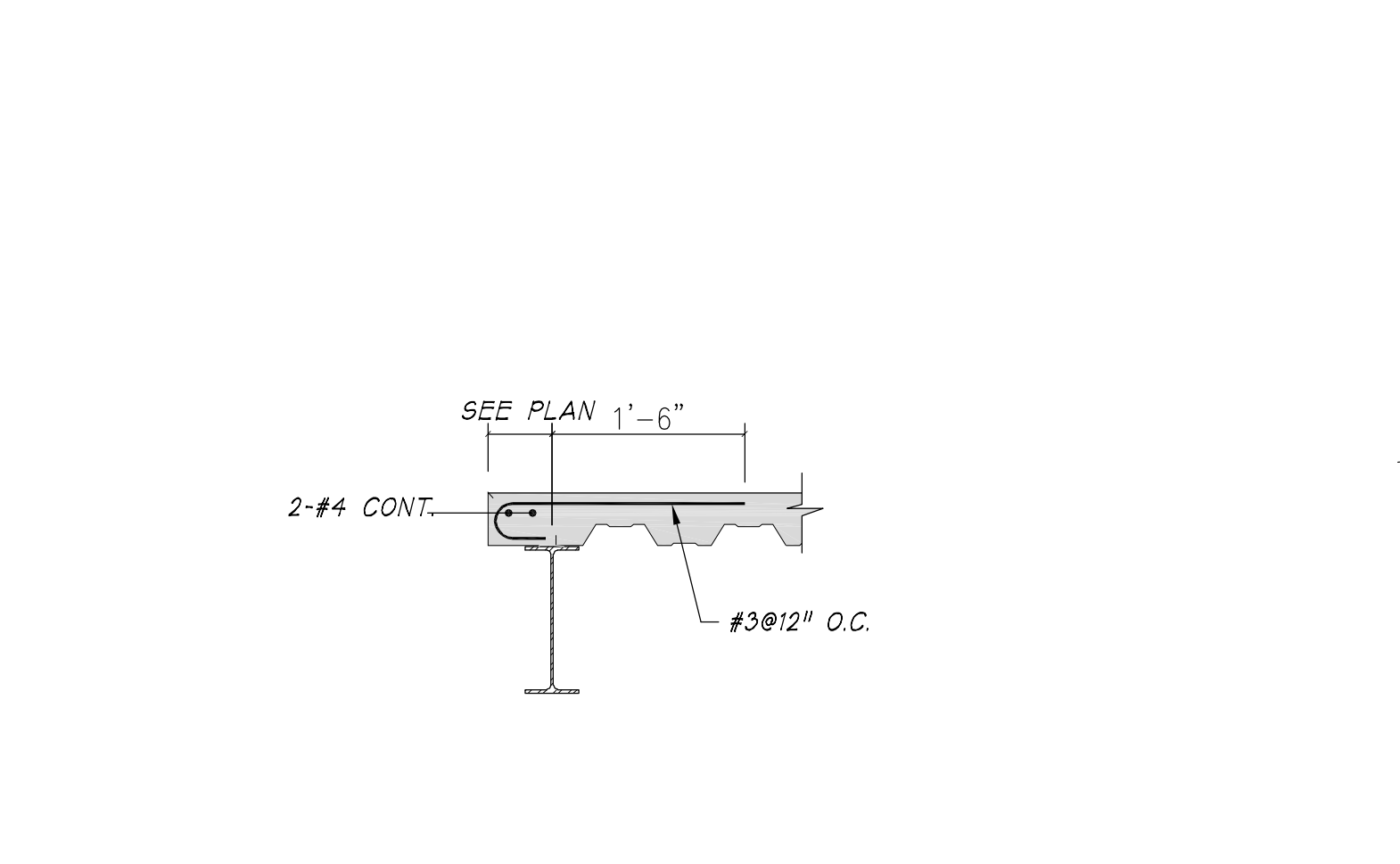
TS-19 CONSTRUCTION JOINT AND SHEAR STUD LAYOUT 3/4"=1'-0"



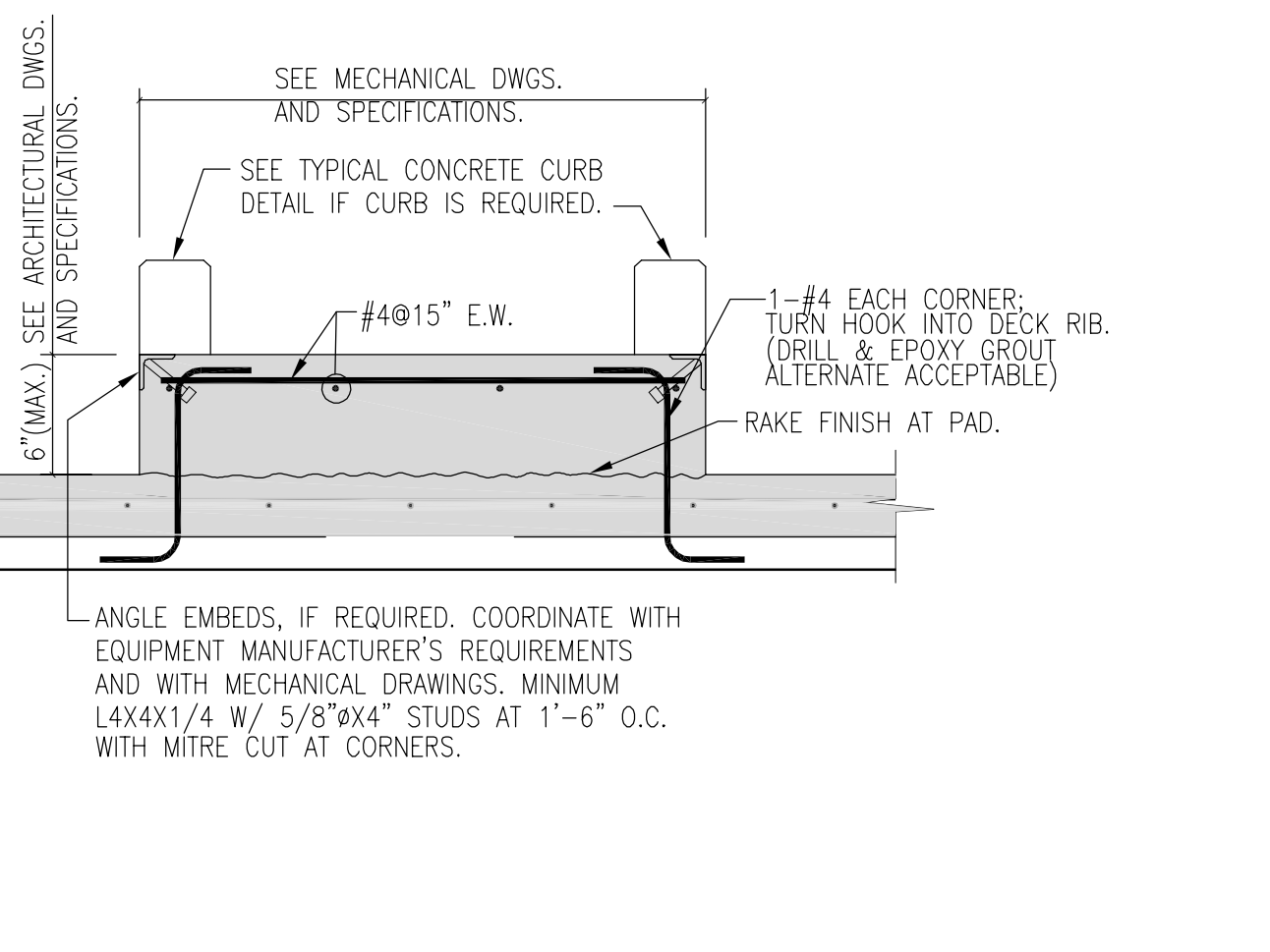
TS-20 SLAB EDGE WITH OPENINGS ON BOTH SIDES OF BEAM 3/4"=1'-0"



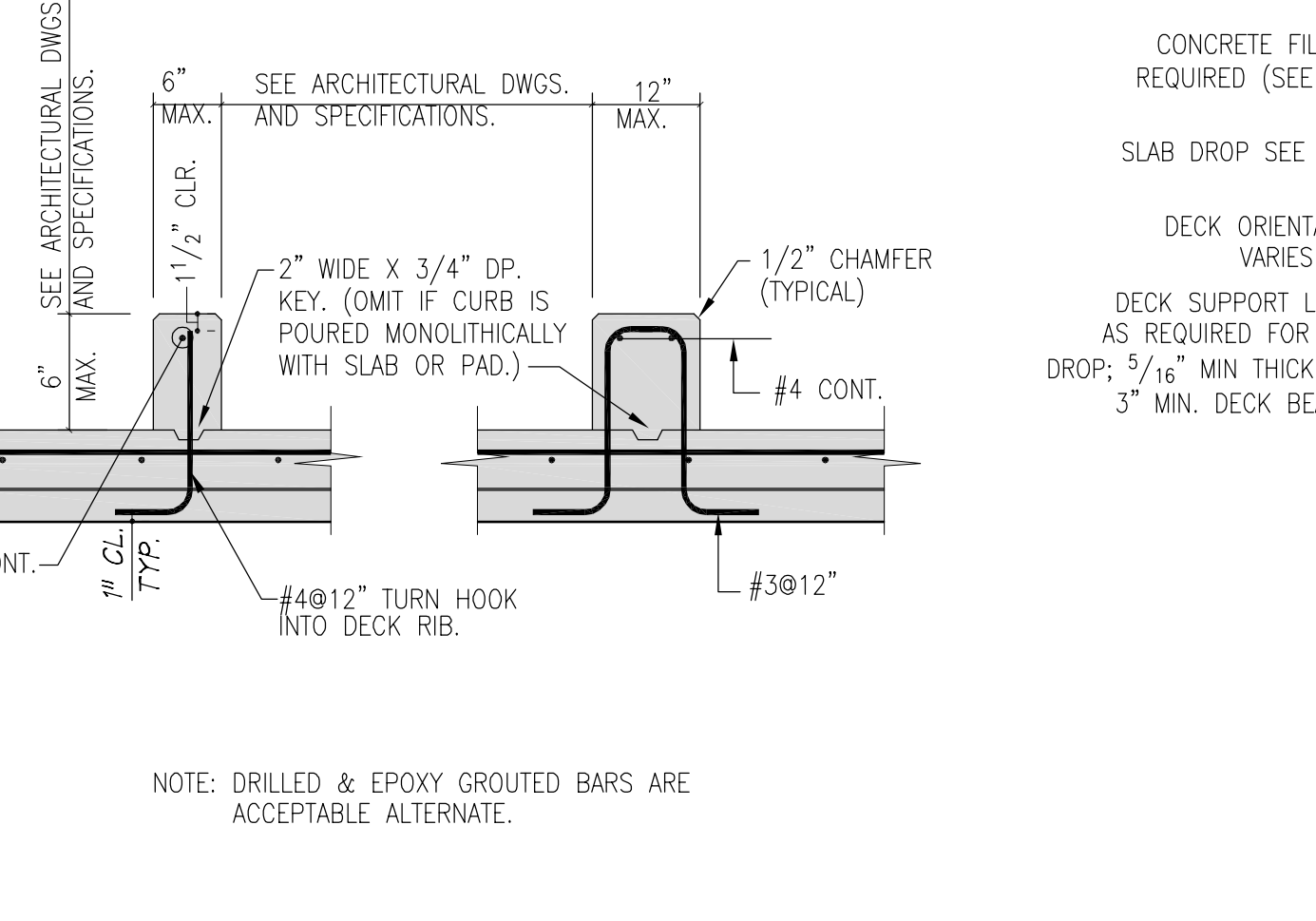
TS-21 TYPICAL SLAB EDGE SUPPORT DETAIL 3/4"=1'-0"



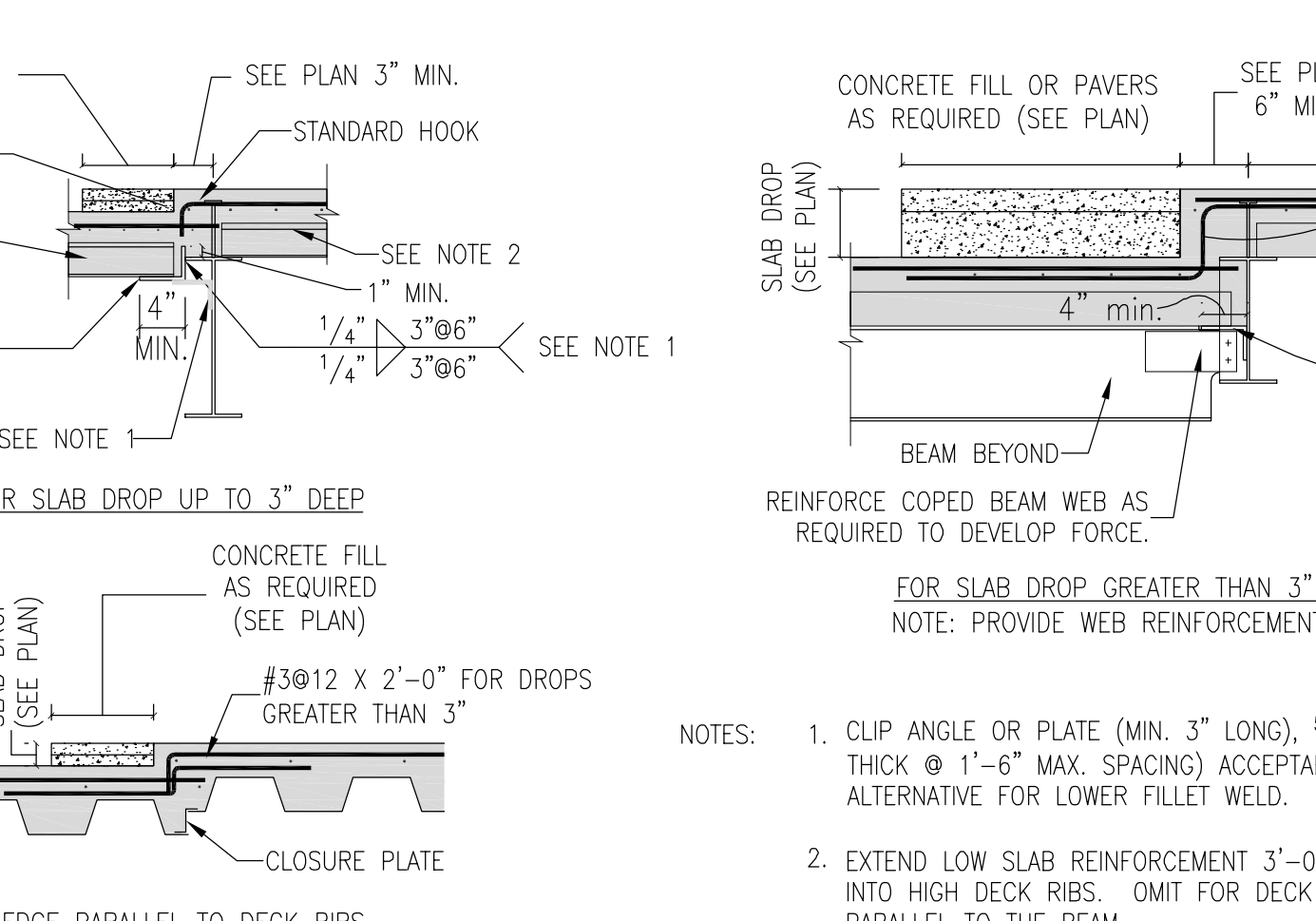
TS-22 SLAB EDGE AT FLOOR OPENING ON ONE SIDE OF BEAM 3/4"=1'-0"



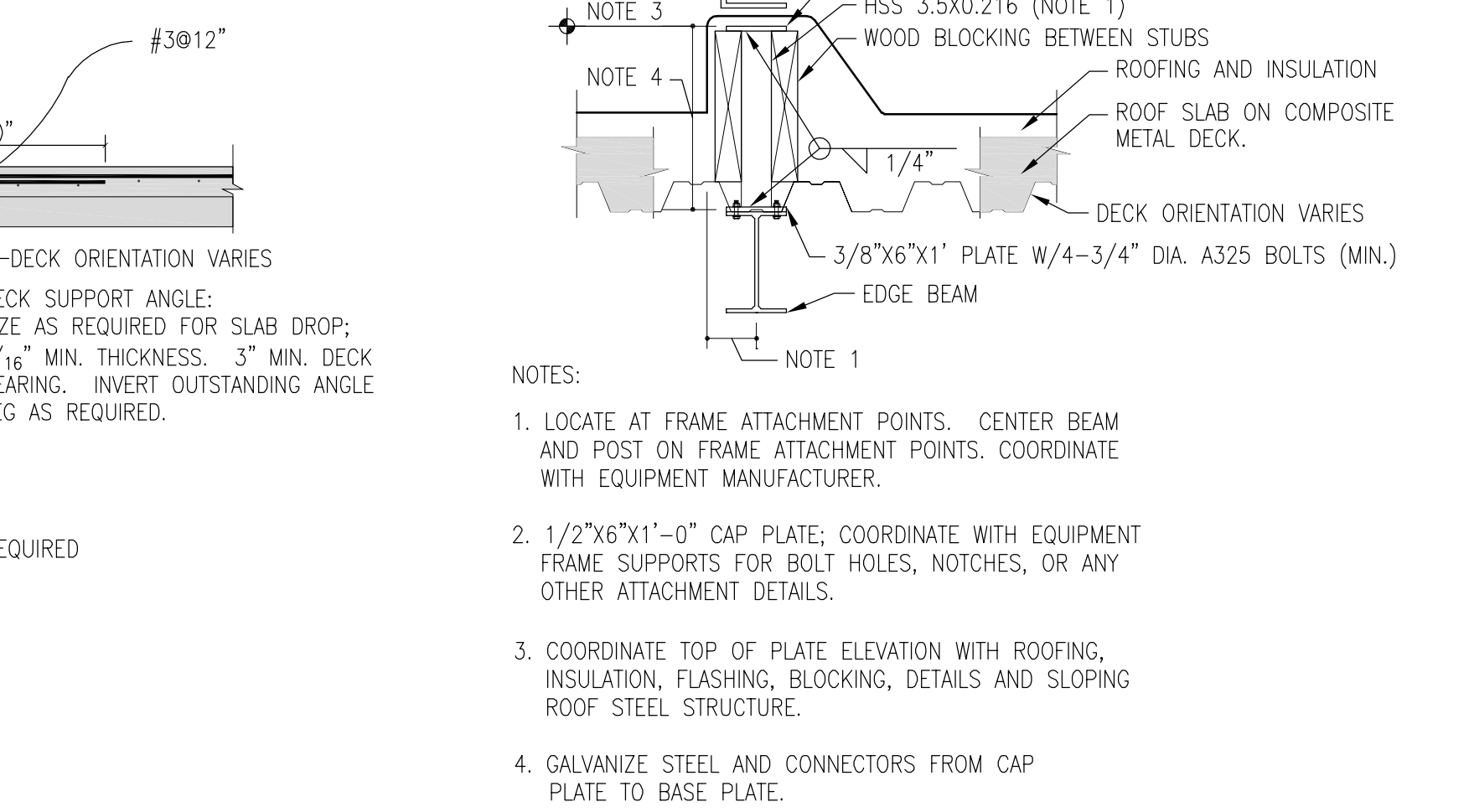
TS-23 HOUSEKEEPING PAD ON COMPOSITE SLAB 3/4"=1'-0"



TS-24 CONCRETE CURB DETAIL 3/4"=1'-0"



TS-25 SLAB DROP DECK AND REINFORCING DETAILS 3/4"=1'-0"

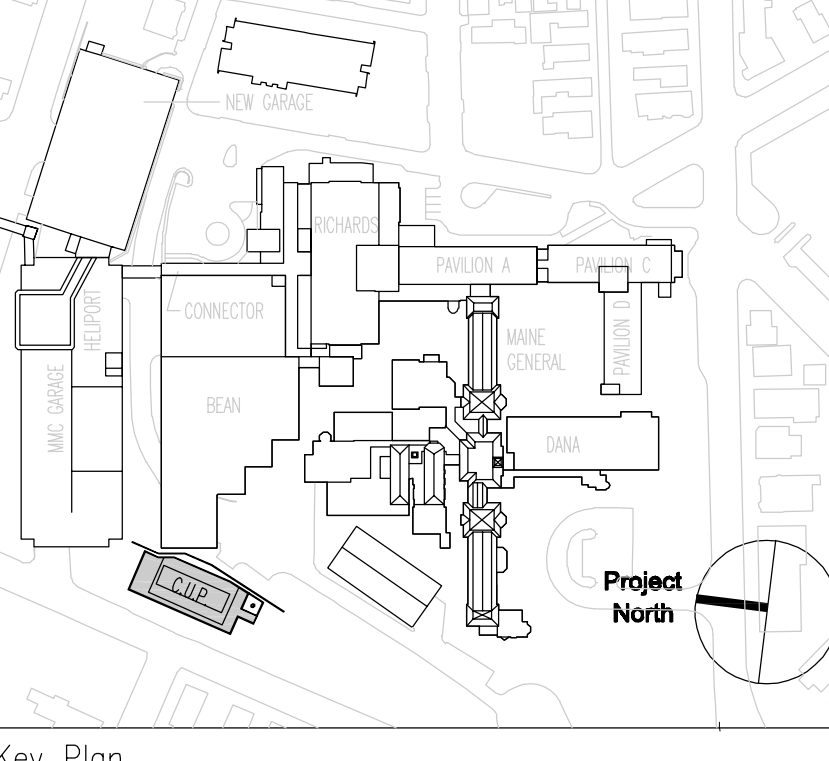


TS-26 ROOF EXHAUST SUPPORT DETAIL 3/4"=1'-0"

SGH
Simpson Gumpertz & Heger Inc.
Consulting Engineers
Boston, MA 41 Bayon Street, Building 1, Suite 500, Waltham, MA 02455 Telephone: (781) 907 9000 Facsimile: (781) 907 9009
San Francisco, CA The Landmark at One Market, Suite 600, San Francisco, CA 94105 Telephone: (415) 498 3700 Facsimile: (415) 498 3550
Washington, DC 1885 Ploard Drive, Suite 225, Rockville, MD 20850 Telephone: (301) 417 0999 Facsimile: (301) 417 0965

FOR PERMIT ONLY - NOT FOR CONSTRUCTION

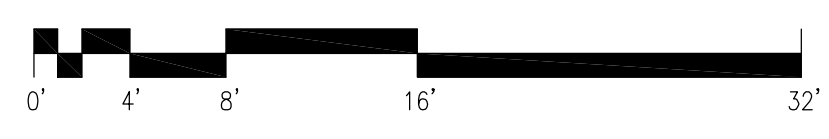
PERMIT: 09/24/04 PERMIT SET - NOT FOR CONSTRUCTION
Issue Log



TRO
ARCHITECTURAL PLANNING ENGINEERING INTERIOR DESIGN
The Ritchie Organization
80 Bridge Street
Newton, MA 02458-1154
617-969-9400

Maine Medical Center
Central Utility Plant
Portland, Maine

Drawing Title:
CENTRAL UTILITY PLANT (CUP) TYPICAL STEEL DETAILS (SHEET 2 OF 2)



Commission No. 4677 Date Issued 24 SEPTEMBER 2004
Scale 3/4"=1'-0" Sheet Number
Drawn By SWW/RWS/KEW
Approved By JHT/AJD
Discipline S103
S103
Copyright © 2004 The Ritchie Organization