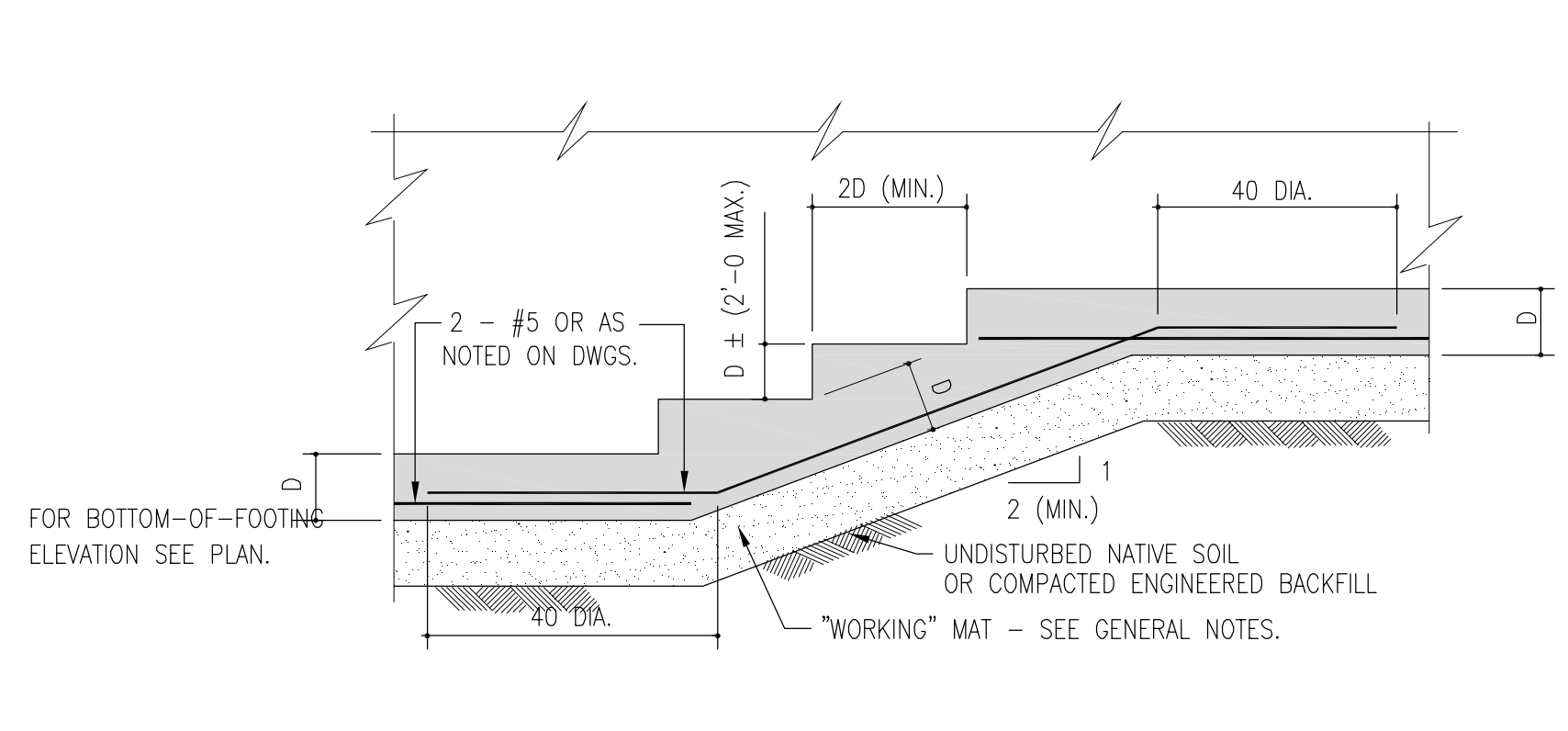
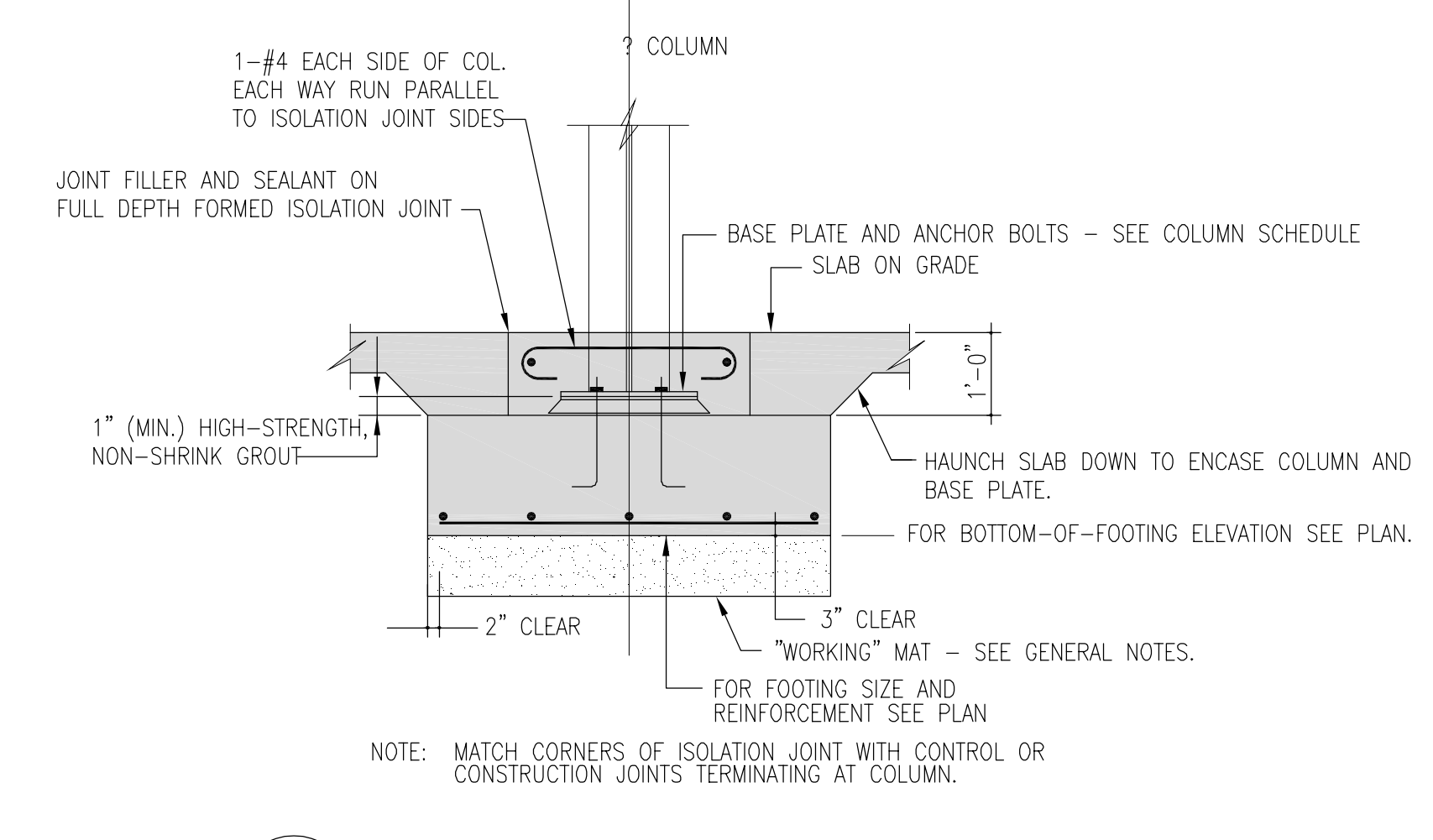


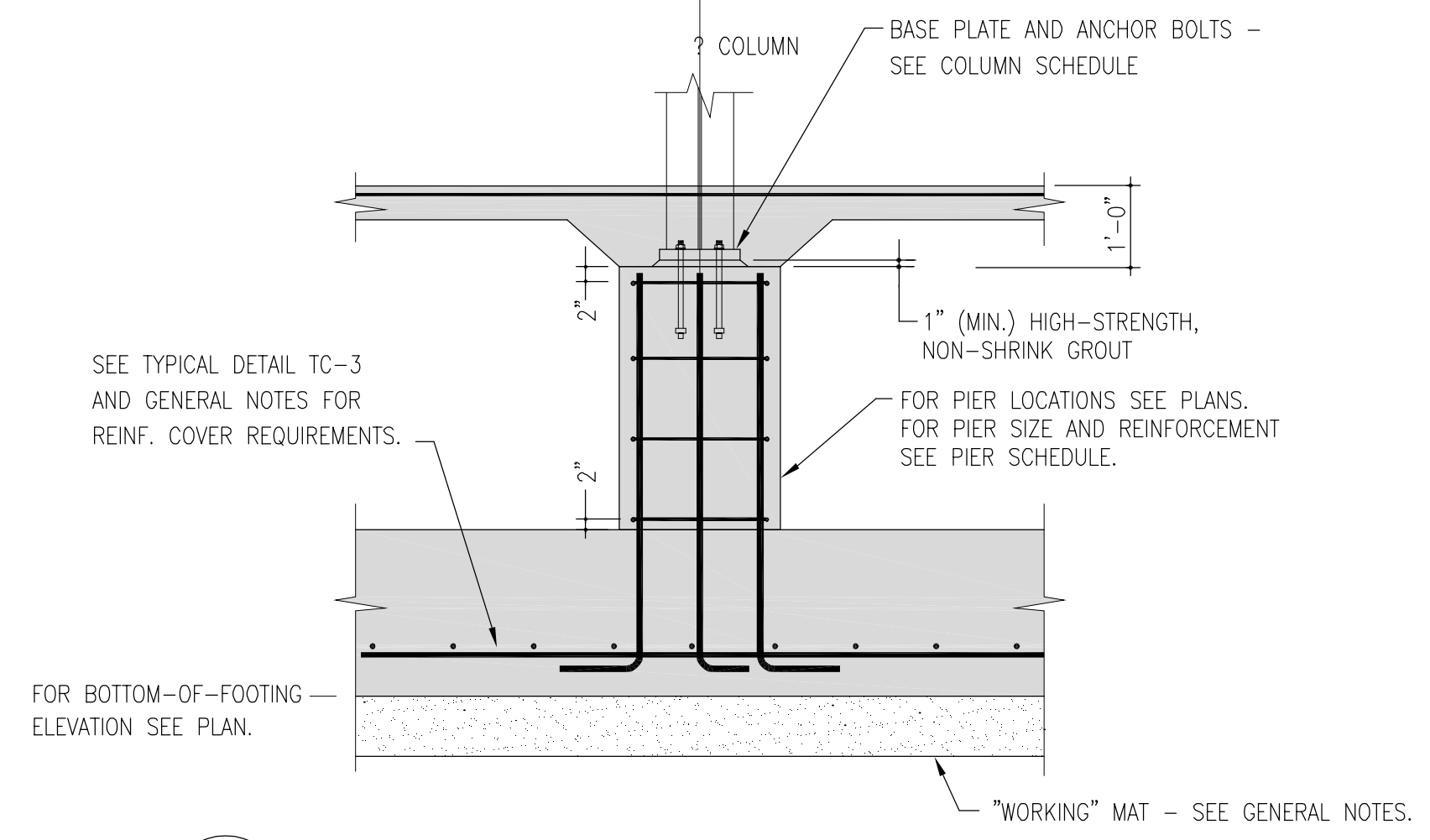
TC-1 TYPICAL CONCRETE WALL CORNER REINFORCEMENT
3/4"=1'-0"



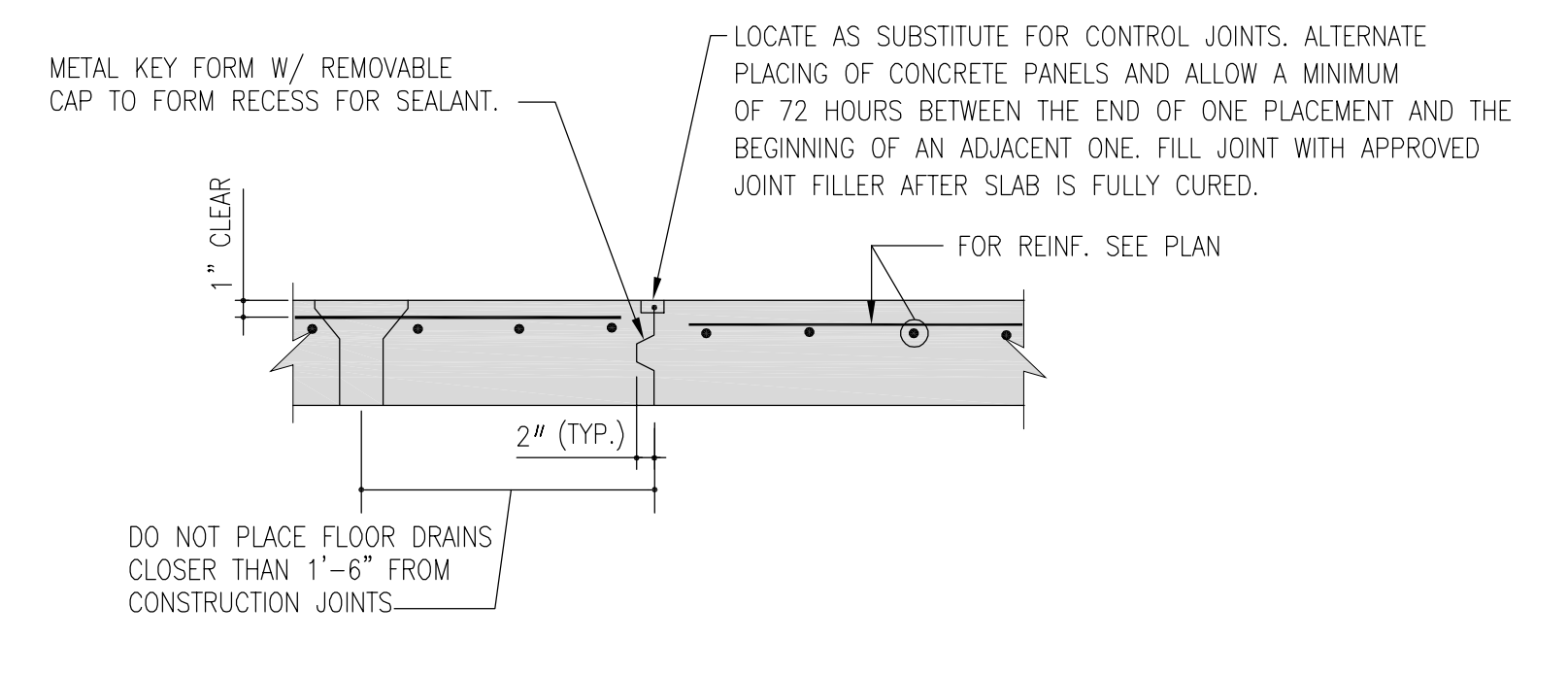
TC-2 CONTINUOUS STEPPED WALL FOOTING
3/4"=1'-0"



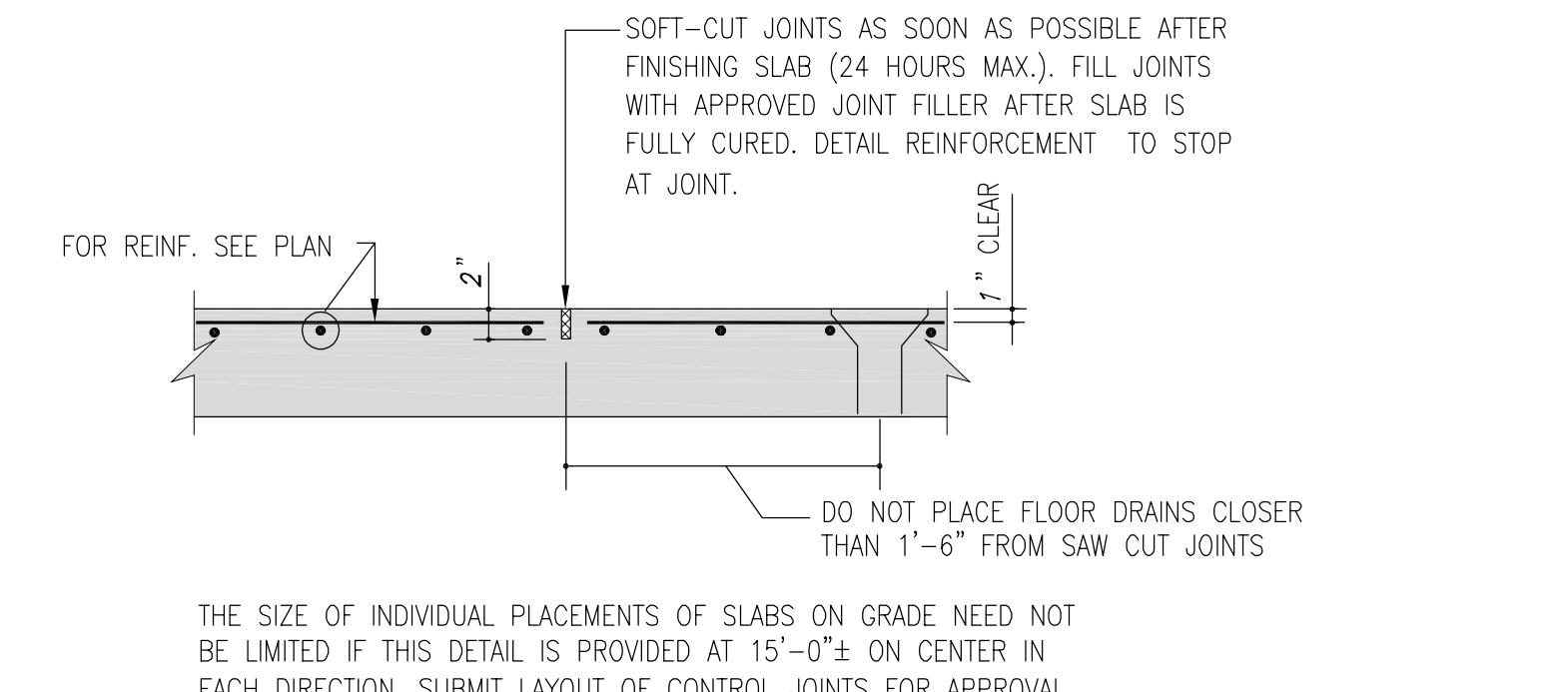
TC-3 INTERIOR COLUMN FOOTING DETAIL
3/4"=1'-0"



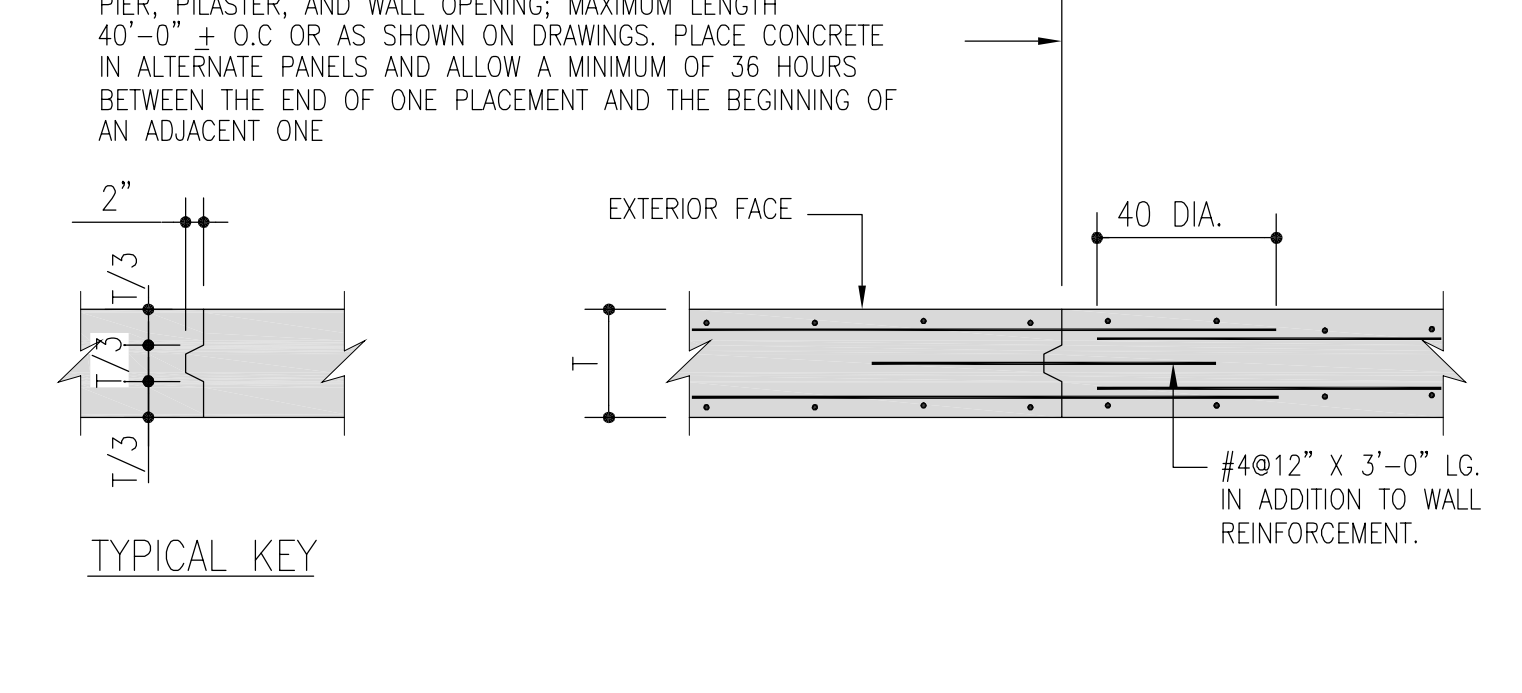
TC-4 TYPICAL COLUMN PEDESTAL
3/4"=1'-0"



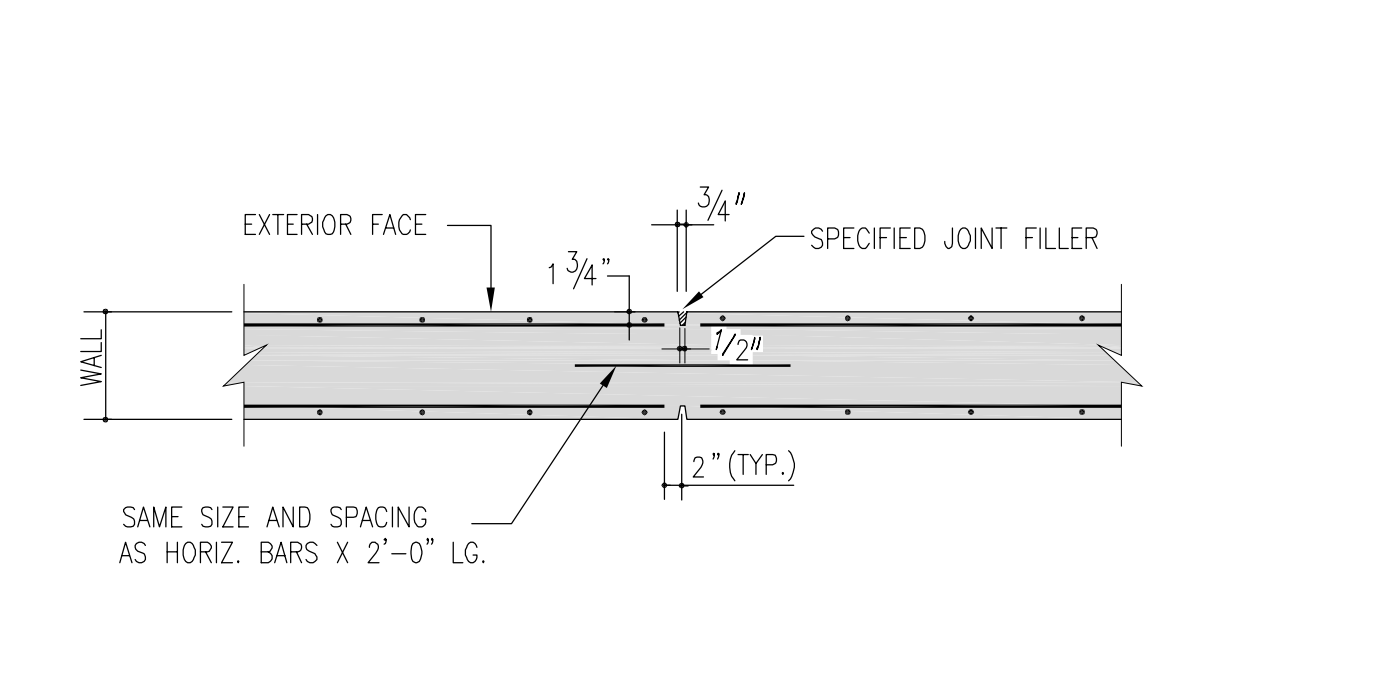
TC-5 CONSTRUCTION JOINT IN SLAB ON GRADE
3/4"=1'-0"



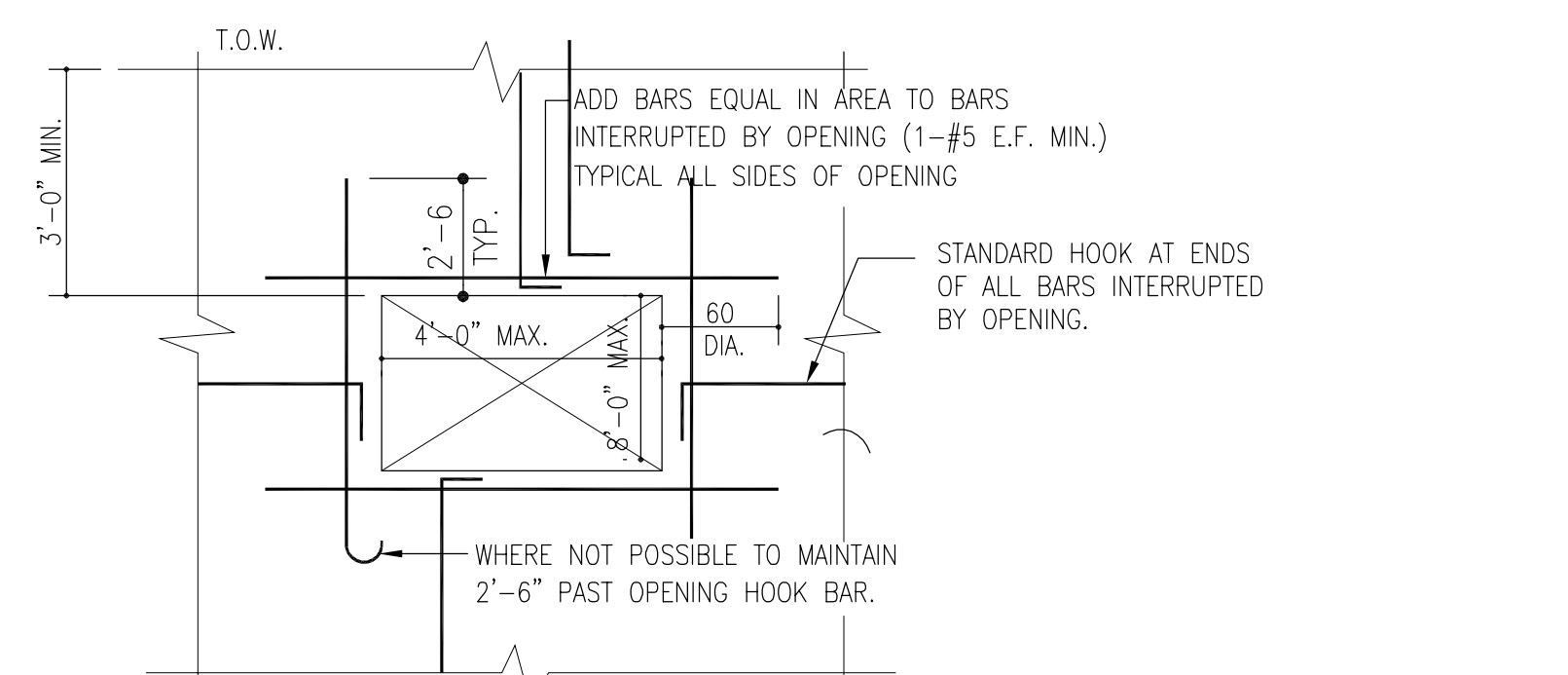
TC-6 CONTROL JOINT IN SLAB ON GRADE
3/4"=1'-0"



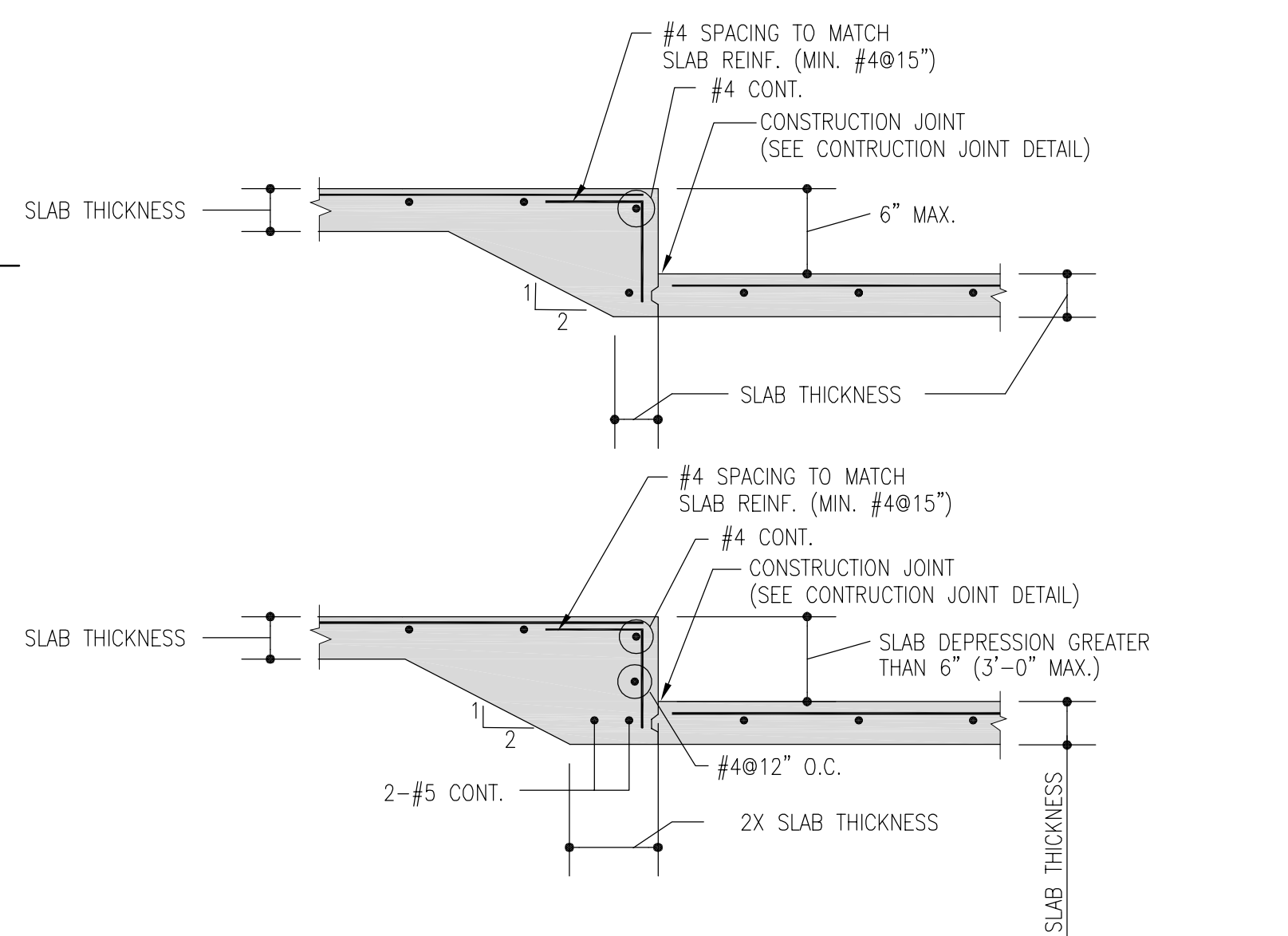
TC-7 CONSTRUCTION JOINT IN CONCRETE WALL
3/4"=1'-0"



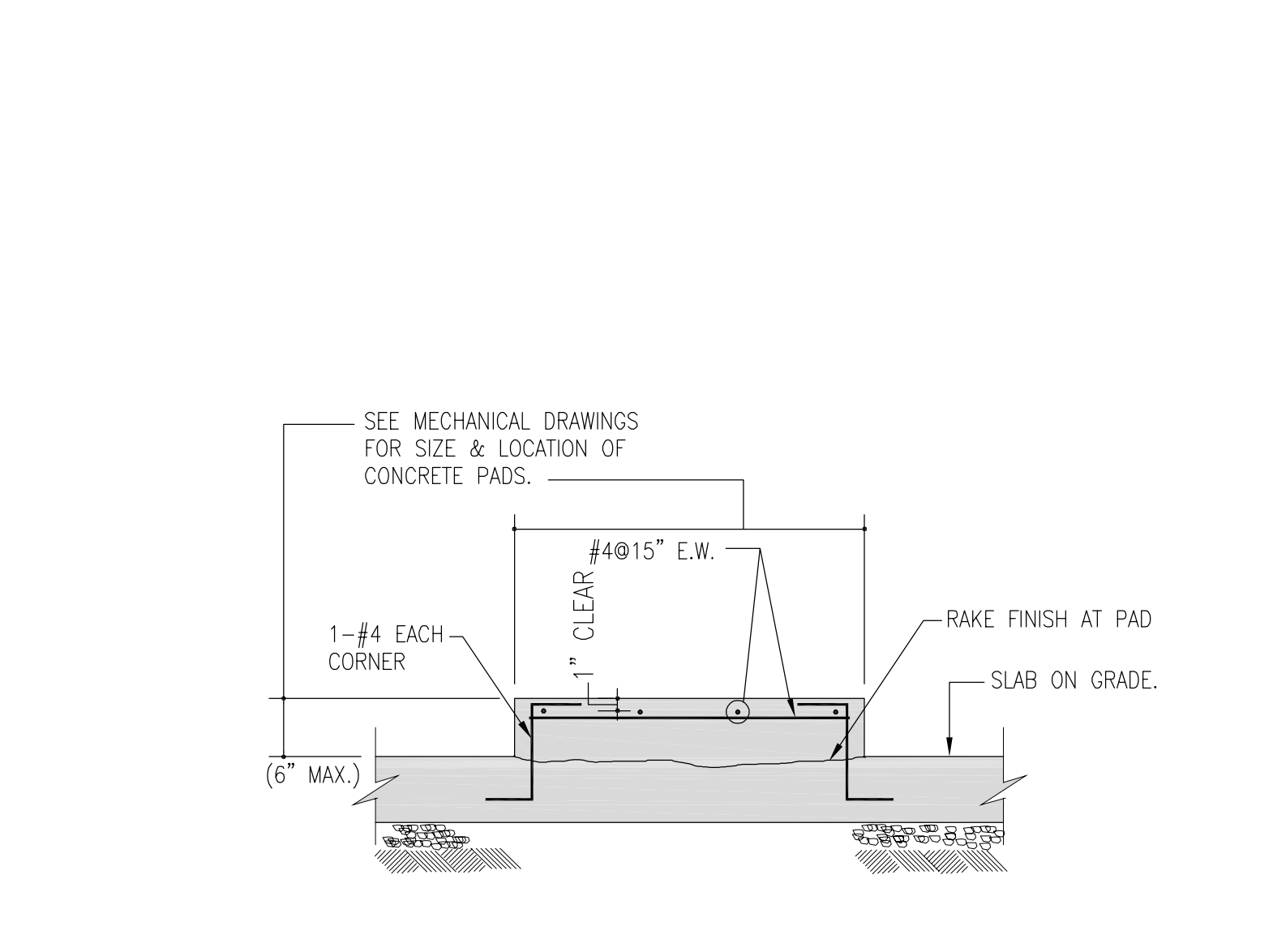
TC-8 CONTROL JOINT IN CONCRETE WALL
MAXIMUM SPACING 40'-0"
3/4"=1'-0"



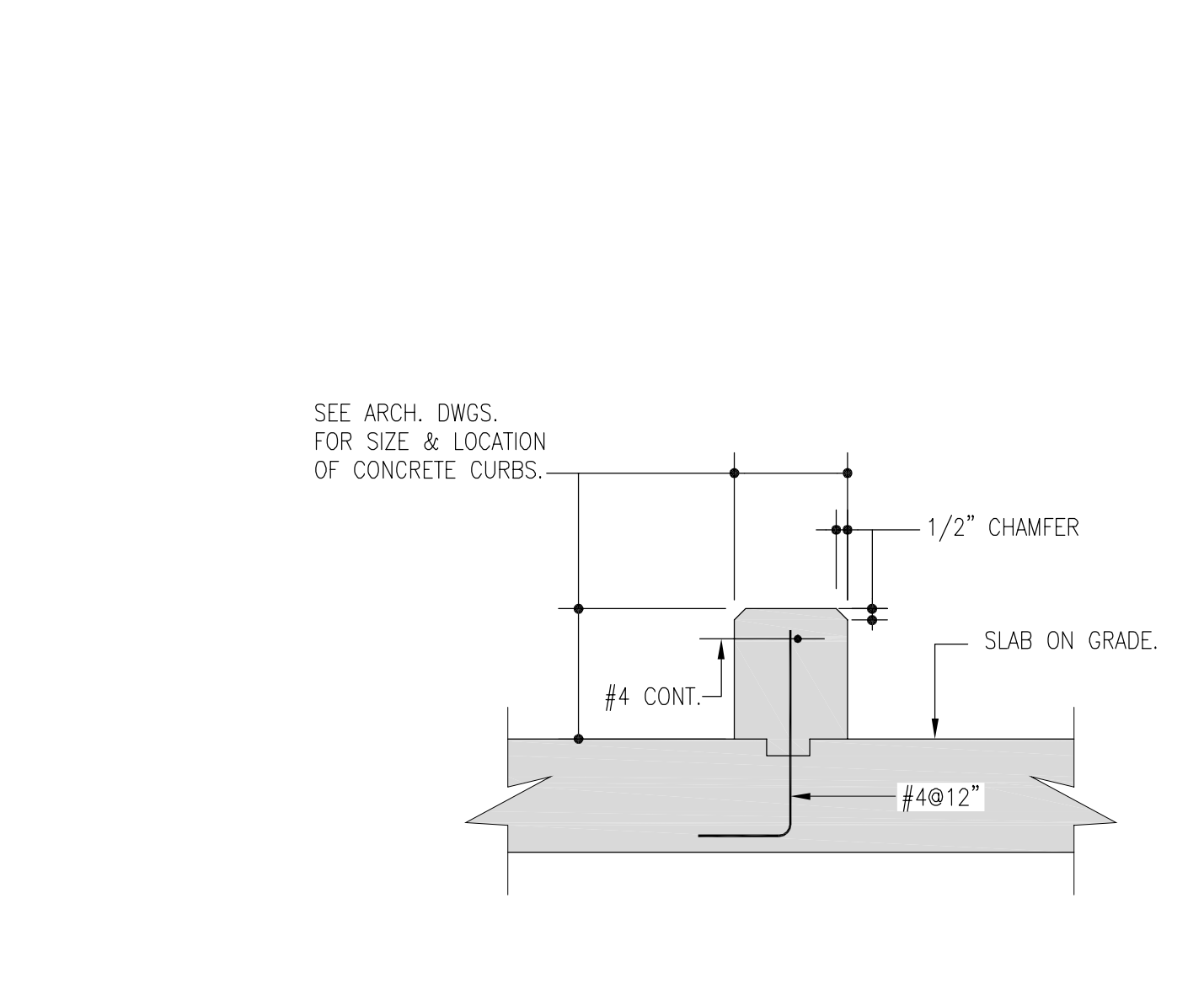
TC-9 TYPICAL REINFORCEMENT AT OPENINGS IN WALLS
3/4"=1'-0"



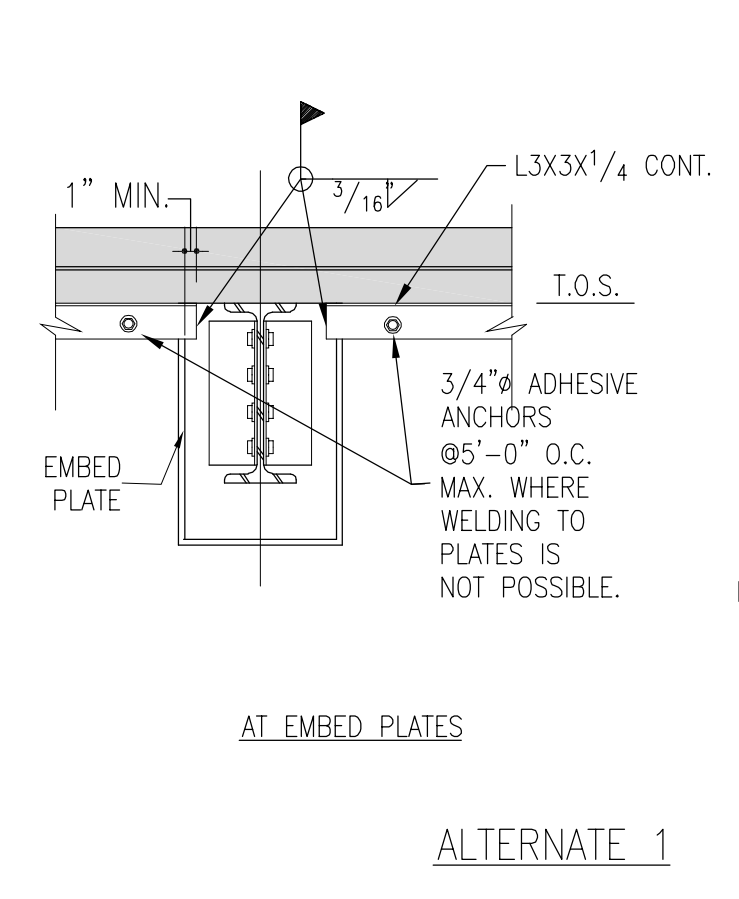
TC-10 SLAB DEPRESSION DETAILS
3/4"=1'-0"



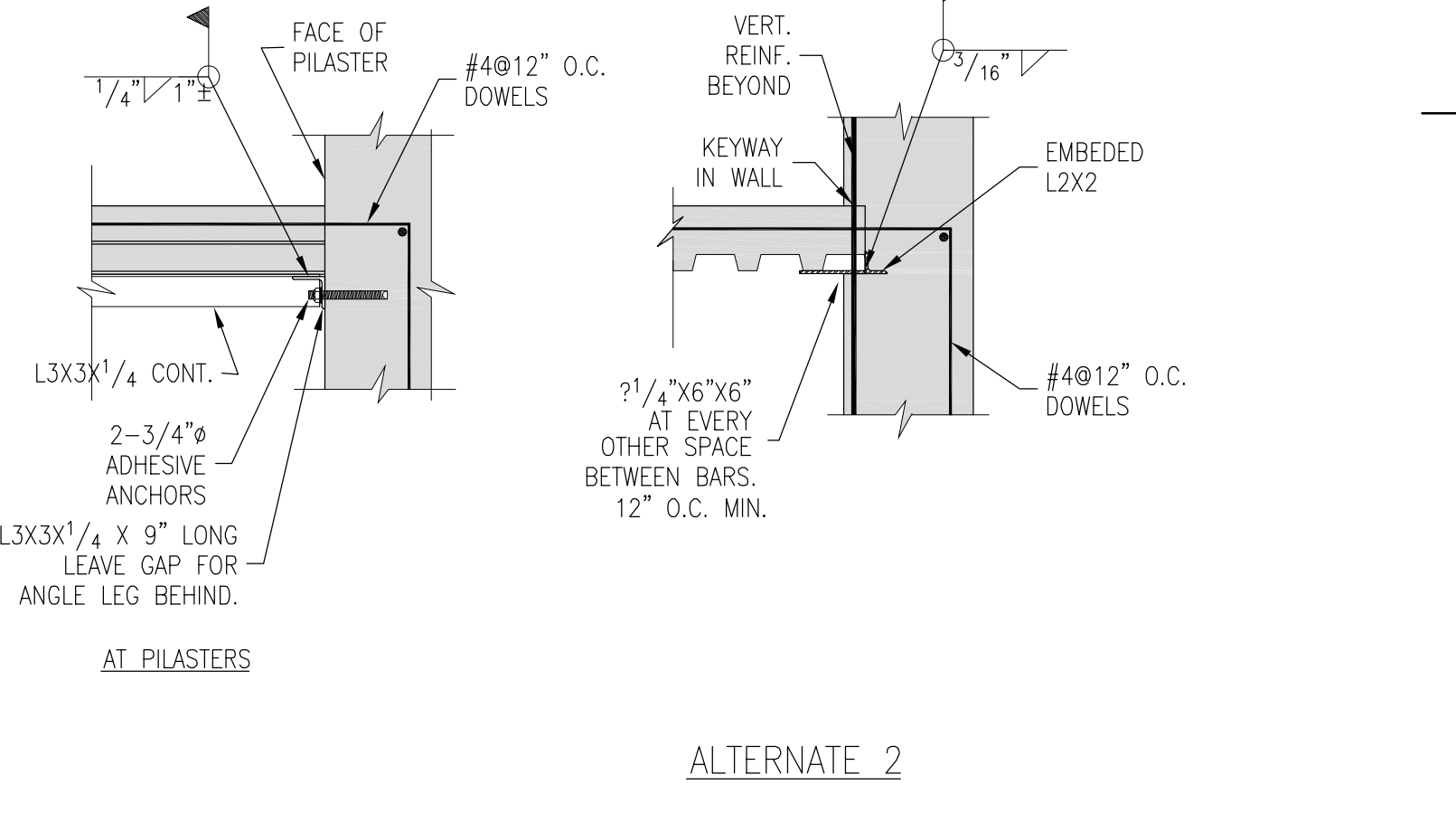
TC-11 TYPICAL CONCRETE PAD DETAIL AT SLAB ON GRADE
3/4"=1'-0"



TC-12 CONCRETE CURB DETAIL AT SLAB ON GRADE
3/4"=1'-0"

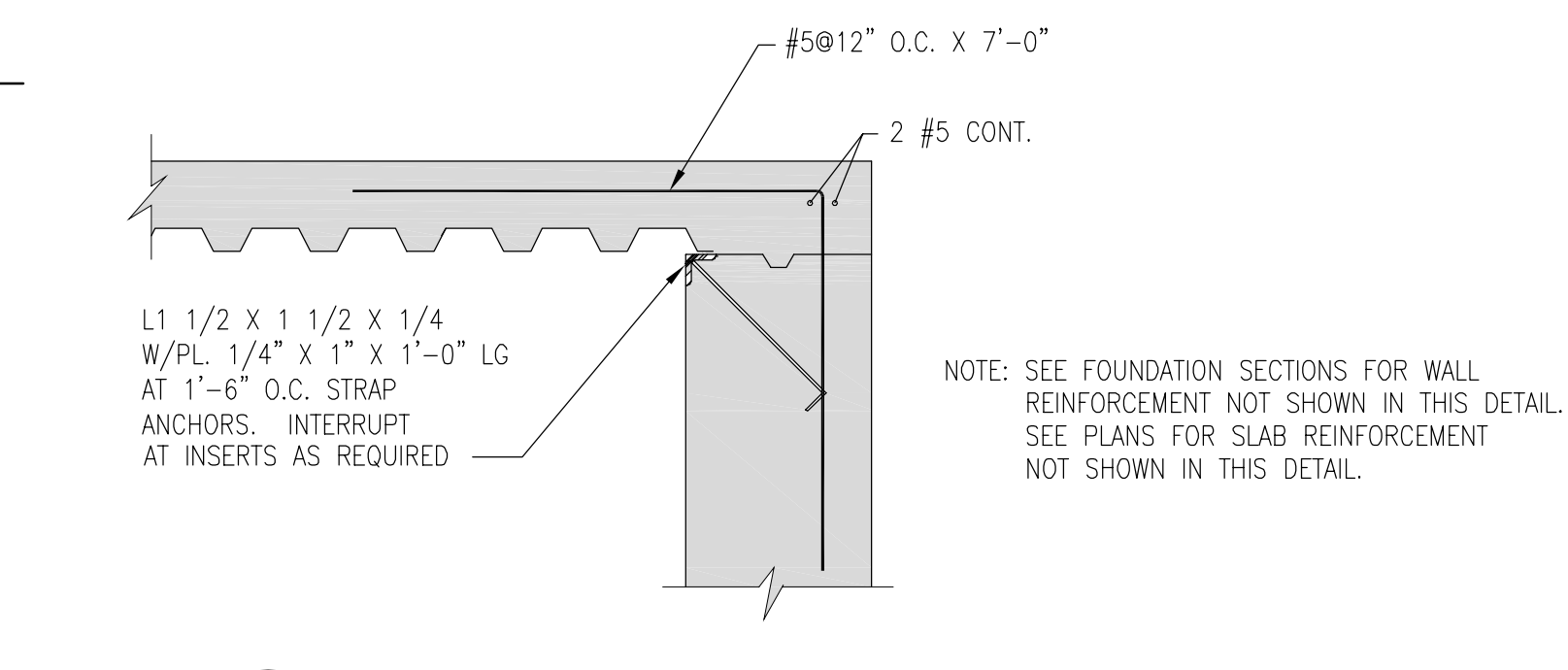


ALTERNATE 1

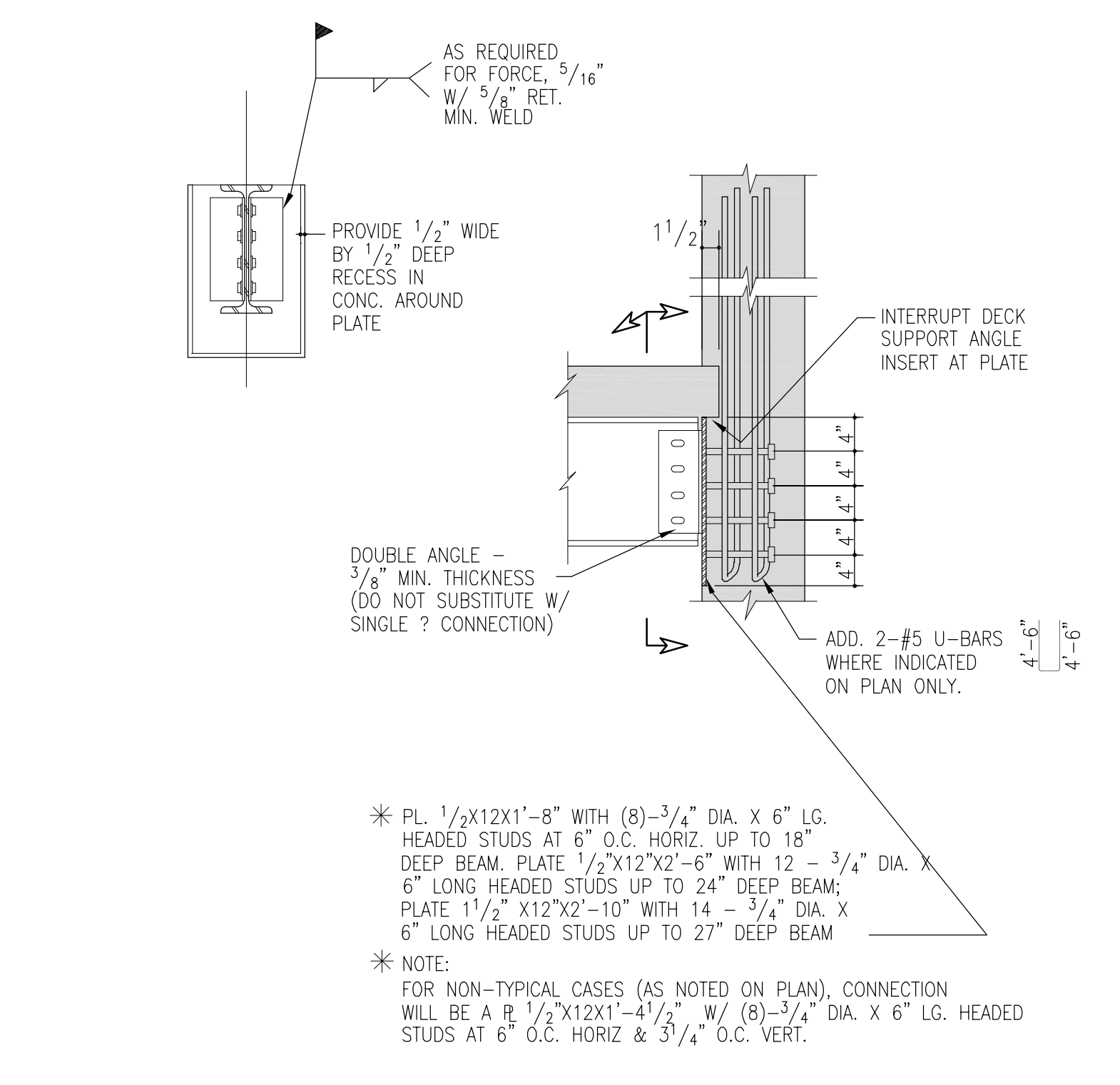


ALTERNATE 2

TC-13 DECK SUPPORT DETAILS ALONG FOUNDATION WALLS
3/4"=1'-0"



TC-14 EDGE OF METAL DECK AT TOP OF CONCRETE WALL
3/4"=1'-0"

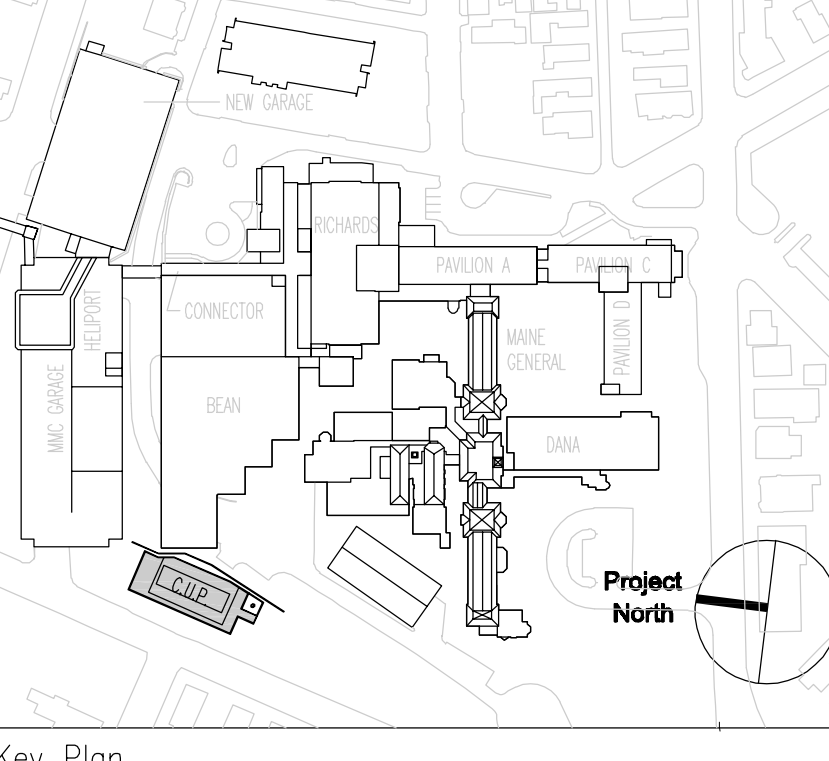


TC-15 STEEL BEAM TO STEEL PLATE EMBEDDED IN CONCRETE [DETAIL AND SCHEDULE]
3/4"=1'-0"

SGH
Simpson Gumpertz & Heger Inc.
Consulting Engineers
Boston, MA 41 Bayon Street, Suite 600
San Francisco, CA The Landmark at One Market, Suite 600
Washington, DC 1885 Ploof Drive, Suite 225
Telephone: (781) 907 9000
Facsimile: (781) 907 9009
Telephone: (415) 435 3700
Facsimile: (415) 435 3550
Telephone: (301) 417 0999
Facsimile: (301) 417 0995

FOR PERMIT ONLY
NOT FOR CONSTRUCTION

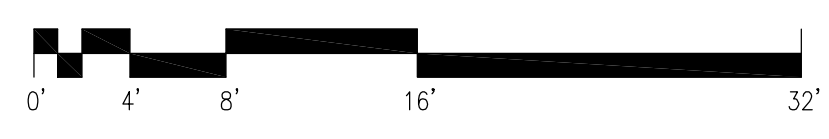
PERMIT 09/24/04 PERMIT SET - NOT FOR CONSTRUCTION
Issue Log



TRO
ARCHITECTURAL
PLANNING
ENGINEERING
INTERIOR DESIGN
The Ritchie Organization
80 Bridge Street
Newton, MA 02458-1154
617-869-9400

Maine Medical Center
Central Utility Plant
Portland, Maine

Drawing Title
**CENTRAL UTILITY PLANT (CUP)
TYPICAL CONCRETE DETAILS
(SHEET 1 OF 1)**



Commission No. 4677 Date Issued 24 SEPTEMBER 2004
Scale AS NOTED Sheet Number
Drawn By SWM/RWS/KEW
Approved By JHT/AJD
Discipline 5101
Copyright © 2004 The Ritchie Organization

S101