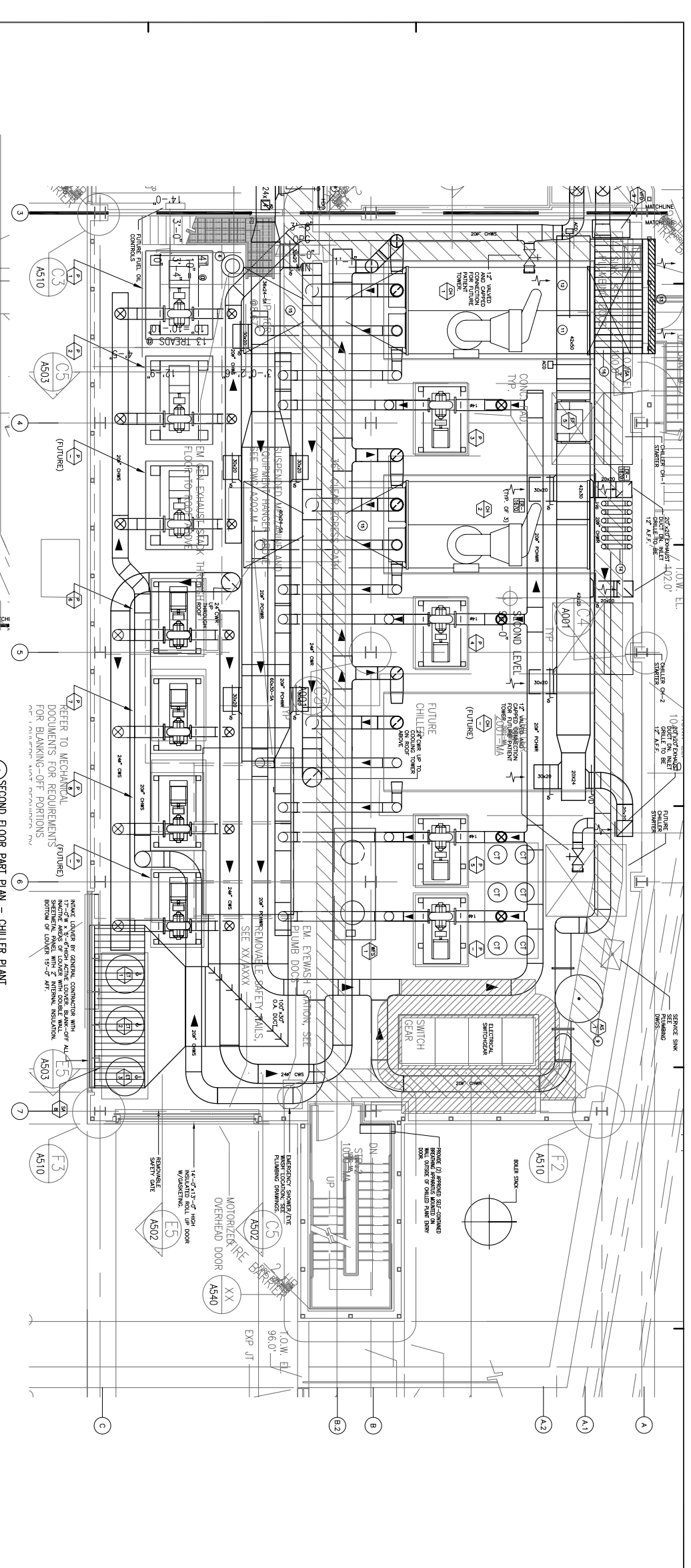
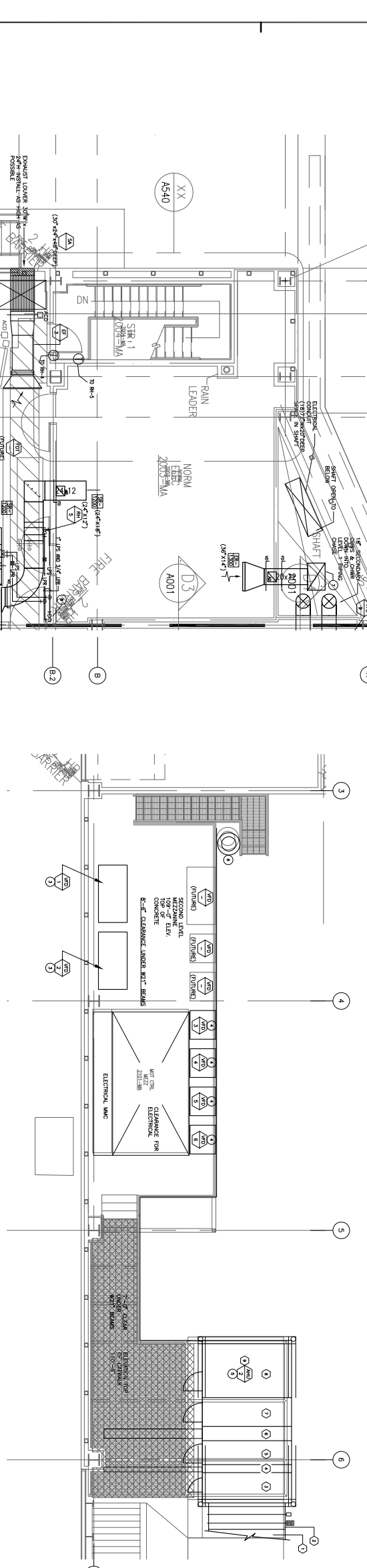


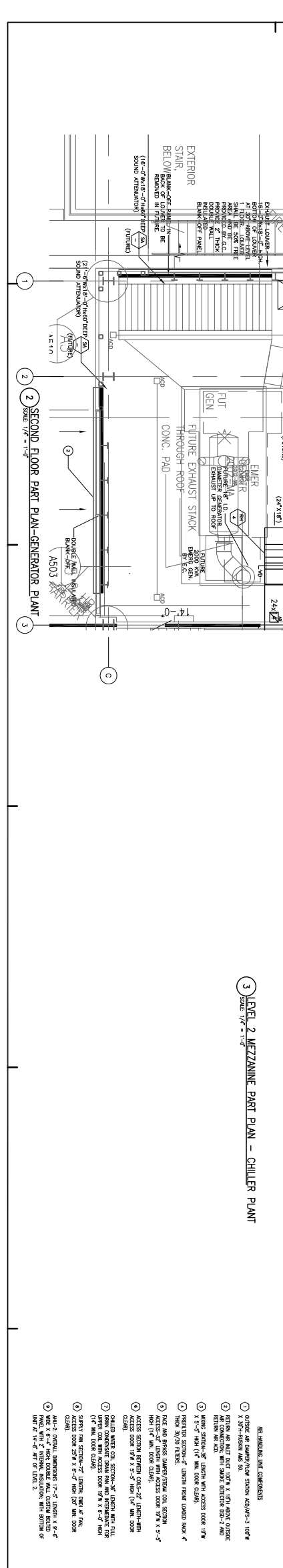
- General Notes:
1. PROVIDE BRUSHES OR GRILLS AT ALL UNFIT FLOORS AND OUTLETS.
  2. FINISH MAKE GOOD PER 21-CFR-101.6-CF. FLOOR LOWER SHALL BE 20% FREE AREA AND BE 1/2" WALL INSULATED PANEL BACK OF LOWER TO BE BOUNDED FROM EXISTING VED BARS. W/OUT SHIRT BARS 3" FROM EXISTING. PROVIDE CLEARANCE OF 12" ABOVE SHIRT ENCLOSURE.
  3. WALL MOUNTED VFD DRIVES (VFD-3A3A3A) PROVIDE ENCLOSURE PROVIDED A UNIVERSAL VFD, CHANNEL VERTICAL CHANNELS TO ATTACH SERVICE TO STRUCTURAL STEEL. PROVIDE SERVICE PANEL MOUNTED TO UNFINISH SYSTEM.
  4. AMU-2 TO BE SUPPLEMENTED & SUPPORTED ON VERTICAL BEAMS/ANCHORS TO STRUCTURAL STEEL. SEE STRUCTURAL DRAWINGS.
  5. UP TO DIAMETER EMERGENCY GENERATOR EXHAUST WITH 1" INSULATION & COVERED WITH METAL SHEET. 3/4" VFD ELECTRICAL ROOM EXHAUST DUCT UP & THRU ROOF TO E7-2 AND 3/4" VFD DOWN TO LEVEL 1 MEZZANINE.
  6. 1"-7" VFD & 1" VFD DOWN TO LEVEL 1.
  7. INSTALL AIR SEPARATOR AS 1.45 HIGH AS POSSIBLE BOTTOM OF AS-1.1 AND PRELIMINARY SUPPORT FLOOR. VFD AIR AND PRELIMINARY SUPPORT FLOOR. VFD AIR AND PRELIMINARY SUPPORT FLOOR. VFD AIR AND PRELIMINARY SUPPORT FLOOR.
  8. 12'-0" X 5'-0" HIGH EXHAUST LOUVER BY G.C. WITH BOTTOM AT 12'-0" AFF.
  9. (6) 8" STEEL VENT PIPES UP AND THRU ROOF.
  10. CHILLER FRONT TUBE FULL CLEARANCE.
  11. CHILLER REAR WORK SPACE CLEARANCE.



1 SECOND FLOOR PART PLAN - CHILLER PLANT  
SCALE 1/4" = 1'-0"



3 LEVEL 2 MEZZANINE PART PLAN - CHILLER PLANT  
SCALE 1/4" = 1'-0"



2 SECOND FLOOR PART PLAN - GENERATOR PLANT  
SCALE 1/4" = 1'-0"

MECHANICAL-CENTRAL UTILITY PLANT LEVEL 2

Central Utility Plant  
Maine Medical Center  
Portland, Maine

PRO A ARCHITECTURE ENGINEERING PLANNING CONSULTING  
1175 North Commercial Street  
Portland, Maine 04103  
Tel: 603.761.1100  
Fax: 603.761.1101  
www.proarch.com

DATE: 09/24/14  
SCALE: 1/4" = 1'-0"  
PROJECT: MECHANICAL-CENTRAL UTILITY PLANT LEVEL 2  
SHEET: M402

DESIGNED BY: [Name]  
CHECKED BY: [Name]  
DATE: 09/24/14

MECHANICAL-CENTRAL UTILITY PLANT LEVEL 2  
M402