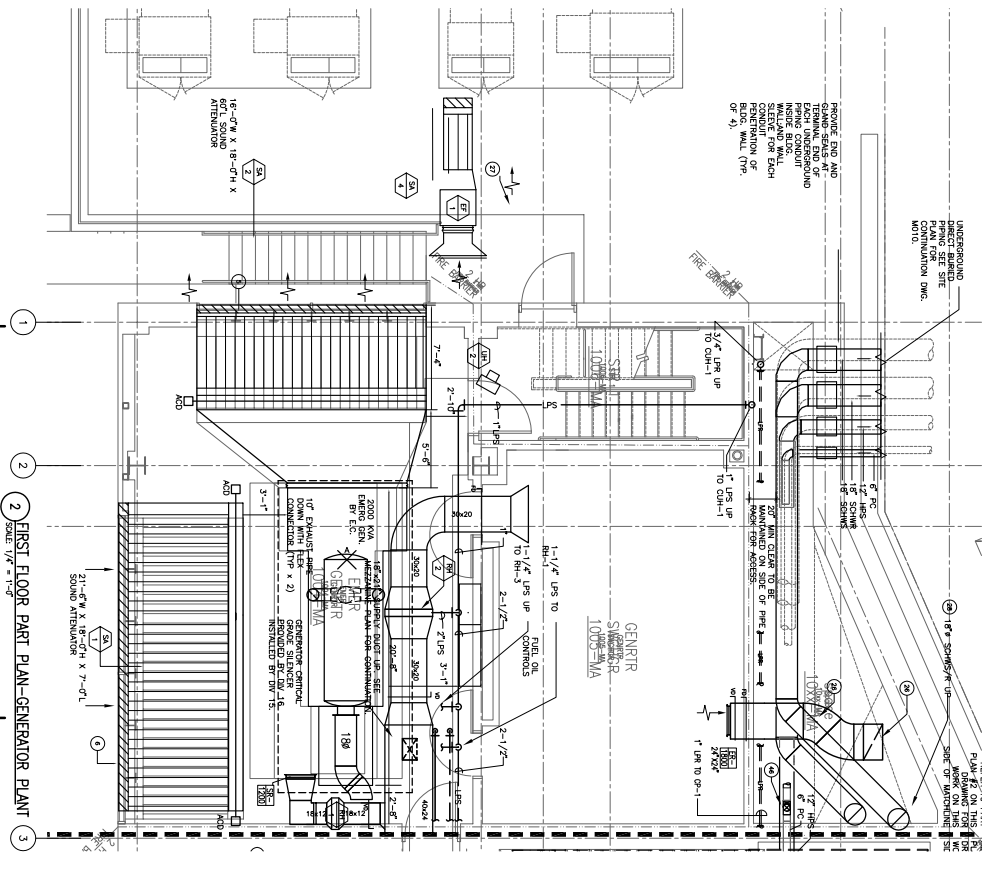


1 FIRST FLOOR PART PLAN - BOILER PLANT
SCALE: 1/4" = 1'-0"



2 FIRST FLOOR PART PLAN - GENERATOR PLANT
SCALE: 1/4" = 1'-0"

DRAWING KEYED NOTES: CONTINUED

- 39 STEAM CONVERTER, SURFACE MOUNTED, 5.0 MM
- 40 4" DIA. EXHAUST DUCT UP AND CONNECT TO 10" DIA. 4" DIA. EXHAUST DUCT THROUGH ROOF
- 41 SYSTEM DUCTLESS UNIT MOUNTED ON WALL, 5'-0" HIGH, 1'-0" DEEP, 1'-0" WIDE, 1'-0" THICK, 1'-0" DIA. EXHAUST DUCT THROUGH ROOF
- 42 EMERGENCY SHOWER AND DE WASH BY P.C. WITH 1'-0" DIA. EXHAUST DUCT THROUGH ROOF
- 43 5" DIA. AND 5' HIGH TO DUMP AND FLOODED BOILERS
- 44 2" DIA. AND 2' HIGH TO DUMP AND FLOODED BOILERS
- 45 2" DIA. AND 2' HIGH TO DUMP AND FLOODED BOILERS
- 46 2" DIA. AND 2' HIGH TO DUMP AND FLOODED BOILERS
- 47 2" DIA. AND 2' HIGH TO DUMP AND FLOODED BOILERS
- 48 2" DIA. AND 2' HIGH TO DUMP AND FLOODED BOILERS
- 49 2" DIA. AND 2' HIGH TO DUMP AND FLOODED BOILERS
- 50 2" DIA. AND 2' HIGH TO DUMP AND FLOODED BOILERS
- 51 2" DIA. AND 2' HIGH TO DUMP AND FLOODED BOILERS
- 52 2" DIA. AND 2' HIGH TO DUMP AND FLOODED BOILERS
- 53 2" DIA. AND 2' HIGH TO DUMP AND FLOODED BOILERS
- 54 2" DIA. AND 2' HIGH TO DUMP AND FLOODED BOILERS
- 55 2" DIA. AND 2' HIGH TO DUMP AND FLOODED BOILERS
- 56 2" DIA. AND 2' HIGH TO DUMP AND FLOODED BOILERS
- 57 2" DIA. AND 2' HIGH TO DUMP AND FLOODED BOILERS
- 58 2" DIA. AND 2' HIGH TO DUMP AND FLOODED BOILERS
- 59 2" DIA. AND 2' HIGH TO DUMP AND FLOODED BOILERS
- 60 2" DIA. AND 2' HIGH TO DUMP AND FLOODED BOILERS
- 61 2" DIA. AND 2' HIGH TO DUMP AND FLOODED BOILERS
- 62 2" DIA. AND 2' HIGH TO DUMP AND FLOODED BOILERS
- 63 2" DIA. AND 2' HIGH TO DUMP AND FLOODED BOILERS
- 64 2" DIA. AND 2' HIGH TO DUMP AND FLOODED BOILERS
- 65 2" DIA. AND 2' HIGH TO DUMP AND FLOODED BOILERS
- 66 2" DIA. AND 2' HIGH TO DUMP AND FLOODED BOILERS
- 67 2" DIA. AND 2' HIGH TO DUMP AND FLOODED BOILERS
- 68 2" DIA. AND 2' HIGH TO DUMP AND FLOODED BOILERS
- 69 2" DIA. AND 2' HIGH TO DUMP AND FLOODED BOILERS
- 70 2" DIA. AND 2' HIGH TO DUMP AND FLOODED BOILERS
- 71 2" DIA. AND 2' HIGH TO DUMP AND FLOODED BOILERS
- 72 2" DIA. AND 2' HIGH TO DUMP AND FLOODED BOILERS
- 73 2" DIA. AND 2' HIGH TO DUMP AND FLOODED BOILERS
- 74 2" DIA. AND 2' HIGH TO DUMP AND FLOODED BOILERS
- 75 2" DIA. AND 2' HIGH TO DUMP AND FLOODED BOILERS
- 76 2" DIA. AND 2' HIGH TO DUMP AND FLOODED BOILERS
- 77 2" DIA. AND 2' HIGH TO DUMP AND FLOODED BOILERS
- 78 2" DIA. AND 2' HIGH TO DUMP AND FLOODED BOILERS
- 79 2" DIA. AND 2' HIGH TO DUMP AND FLOODED BOILERS
- 80 2" DIA. AND 2' HIGH TO DUMP AND FLOODED BOILERS
- 81 2" DIA. AND 2' HIGH TO DUMP AND FLOODED BOILERS
- 82 2" DIA. AND 2' HIGH TO DUMP AND FLOODED BOILERS
- 83 2" DIA. AND 2' HIGH TO DUMP AND FLOODED BOILERS
- 84 2" DIA. AND 2' HIGH TO DUMP AND FLOODED BOILERS
- 85 2" DIA. AND 2' HIGH TO DUMP AND FLOODED BOILERS
- 86 2" DIA. AND 2' HIGH TO DUMP AND FLOODED BOILERS
- 87 2" DIA. AND 2' HIGH TO DUMP AND FLOODED BOILERS
- 88 2" DIA. AND 2' HIGH TO DUMP AND FLOODED BOILERS
- 89 2" DIA. AND 2' HIGH TO DUMP AND FLOODED BOILERS
- 90 2" DIA. AND 2' HIGH TO DUMP AND FLOODED BOILERS
- 91 2" DIA. AND 2' HIGH TO DUMP AND FLOODED BOILERS
- 92 2" DIA. AND 2' HIGH TO DUMP AND FLOODED BOILERS
- 93 2" DIA. AND 2' HIGH TO DUMP AND FLOODED BOILERS
- 94 2" DIA. AND 2' HIGH TO DUMP AND FLOODED BOILERS
- 95 2" DIA. AND 2' HIGH TO DUMP AND FLOODED BOILERS
- 96 2" DIA. AND 2' HIGH TO DUMP AND FLOODED BOILERS
- 97 2" DIA. AND 2' HIGH TO DUMP AND FLOODED BOILERS
- 98 2" DIA. AND 2' HIGH TO DUMP AND FLOODED BOILERS
- 99 2" DIA. AND 2' HIGH TO DUMP AND FLOODED BOILERS
- 100 2" DIA. AND 2' HIGH TO DUMP AND FLOODED BOILERS

DRAWING KEYED NOTES:

- 1 REMOVE EXISTING OR GRABLES AT ALL DUCT
- 2 REFER VENT PIPING UP THROUGH ROOF
- 3 A NEW INCOMING GAS SERVICE BY PLUMBING
- 4 DASHED POLYLINE DENOTES SERVICE CLEARANCE
- 5 EXHAUST LOWER 16'-0" DIA. 18'-0" HIGH, BOTTOM
- 6 EXHAUST LOWER 16'-0" DIA. 18'-0" HIGH, BOTTOM
- 7 20'-0" X 12'-0" UNGRADED CHANNEL, RACK
- 8 20'-0" X 12'-0" UNGRADED CHANNEL, RACK
- 9 20'-0" X 12'-0" UNGRADED CHANNEL, RACK
- 10 20'-0" X 12'-0" UNGRADED CHANNEL, RACK
- 11 20'-0" X 12'-0" UNGRADED CHANNEL, RACK
- 12 20'-0" X 12'-0" UNGRADED CHANNEL, RACK
- 13 20'-0" X 12'-0" UNGRADED CHANNEL, RACK
- 14 20'-0" X 12'-0" UNGRADED CHANNEL, RACK
- 15 20'-0" X 12'-0" UNGRADED CHANNEL, RACK
- 16 20'-0" X 12'-0" UNGRADED CHANNEL, RACK
- 17 20'-0" X 12'-0" UNGRADED CHANNEL, RACK
- 18 20'-0" X 12'-0" UNGRADED CHANNEL, RACK
- 19 20'-0" X 12'-0" UNGRADED CHANNEL, RACK
- 20 20'-0" X 12'-0" UNGRADED CHANNEL, RACK
- 21 20'-0" X 12'-0" UNGRADED CHANNEL, RACK
- 22 20'-0" X 12'-0" UNGRADED CHANNEL, RACK
- 23 20'-0" X 12'-0" UNGRADED CHANNEL, RACK
- 24 20'-0" X 12'-0" UNGRADED CHANNEL, RACK
- 25 20'-0" X 12'-0" UNGRADED CHANNEL, RACK
- 26 20'-0" X 12'-0" UNGRADED CHANNEL, RACK
- 27 20'-0" X 12'-0" UNGRADED CHANNEL, RACK
- 28 20'-0" X 12'-0" UNGRADED CHANNEL, RACK
- 29 20'-0" X 12'-0" UNGRADED CHANNEL, RACK
- 30 20'-0" X 12'-0" UNGRADED CHANNEL, RACK
- 31 20'-0" X 12'-0" UNGRADED CHANNEL, RACK
- 32 20'-0" X 12'-0" UNGRADED CHANNEL, RACK
- 33 20'-0" X 12'-0" UNGRADED CHANNEL, RACK
- 34 20'-0" X 12'-0" UNGRADED CHANNEL, RACK
- 35 20'-0" X 12'-0" UNGRADED CHANNEL, RACK
- 36 20'-0" X 12'-0" UNGRADED CHANNEL, RACK
- 37 20'-0" X 12'-0" UNGRADED CHANNEL, RACK
- 38 20'-0" X 12'-0" UNGRADED CHANNEL, RACK
- 39 20'-0" X 12'-0" UNGRADED CHANNEL, RACK
- 40 20'-0" X 12'-0" UNGRADED CHANNEL, RACK
- 41 20'-0" X 12'-0" UNGRADED CHANNEL, RACK
- 42 20'-0" X 12'-0" UNGRADED CHANNEL, RACK
- 43 20'-0" X 12'-0" UNGRADED CHANNEL, RACK
- 44 20'-0" X 12'-0" UNGRADED CHANNEL, RACK
- 45 20'-0" X 12'-0" UNGRADED CHANNEL, RACK
- 46 20'-0" X 12'-0" UNGRADED CHANNEL, RACK
- 47 20'-0" X 12'-0" UNGRADED CHANNEL, RACK
- 48 20'-0" X 12'-0" UNGRADED CHANNEL, RACK
- 49 20'-0" X 12'-0" UNGRADED CHANNEL, RACK
- 50 20'-0" X 12'-0" UNGRADED CHANNEL, RACK
- 51 20'-0" X 12'-0" UNGRADED CHANNEL, RACK
- 52 20'-0" X 12'-0" UNGRADED CHANNEL, RACK
- 53 20'-0" X 12'-0" UNGRADED CHANNEL, RACK
- 54 20'-0" X 12'-0" UNGRADED CHANNEL, RACK
- 55 20'-0" X 12'-0" UNGRADED CHANNEL, RACK
- 56 20'-0" X 12'-0" UNGRADED CHANNEL, RACK
- 57 20'-0" X 12'-0" UNGRADED CHANNEL, RACK
- 58 20'-0" X 12'-0" UNGRADED CHANNEL, RACK
- 59 20'-0" X 12'-0" UNGRADED CHANNEL, RACK
- 60 20'-0" X 12'-0" UNGRADED CHANNEL, RACK
- 61 20'-0" X 12'-0" UNGRADED CHANNEL, RACK
- 62 20'-0" X 12'-0" UNGRADED CHANNEL, RACK
- 63 20'-0" X 12'-0" UNGRADED CHANNEL, RACK
- 64 20'-0" X 12'-0" UNGRADED CHANNEL, RACK
- 65 20'-0" X 12'-0" UNGRADED CHANNEL, RACK
- 66 20'-0" X 12'-0" UNGRADED CHANNEL, RACK
- 67 20'-0" X 12'-0" UNGRADED CHANNEL, RACK
- 68 20'-0" X 12'-0" UNGRADED CHANNEL, RACK
- 69 20'-0" X 12'-0" UNGRADED CHANNEL, RACK
- 70 20'-0" X 12'-0" UNGRADED CHANNEL, RACK
- 71 20'-0" X 12'-0" UNGRADED CHANNEL, RACK
- 72 20'-0" X 12'-0" UNGRADED CHANNEL, RACK
- 73 20'-0" X 12'-0" UNGRADED CHANNEL, RACK
- 74 20'-0" X 12'-0" UNGRADED CHANNEL, RACK
- 75 20'-0" X 12'-0" UNGRADED CHANNEL, RACK
- 76 20'-0" X 12'-0" UNGRADED CHANNEL, RACK
- 77 20'-0" X 12'-0" UNGRADED CHANNEL, RACK
- 78 20'-0" X 12'-0" UNGRADED CHANNEL, RACK
- 79 20'-0" X 12'-0" UNGRADED CHANNEL, RACK
- 80 20'-0" X 12'-0" UNGRADED CHANNEL, RACK
- 81 20'-0" X 12'-0" UNGRADED CHANNEL, RACK
- 82 20'-0" X 12'-0" UNGRADED CHANNEL, RACK
- 83 20'-0" X 12'-0" UNGRADED CHANNEL, RACK
- 84 20'-0" X 12'-0" UNGRADED CHANNEL, RACK
- 85 20'-0" X 12'-0" UNGRADED CHANNEL, RACK
- 86 20'-0" X 12'-0" UNGRADED CHANNEL, RACK
- 87 20'-0" X 12'-0" UNGRADED CHANNEL, RACK
- 88 20'-0" X 12'-0" UNGRADED CHANNEL, RACK
- 89 20'-0" X 12'-0" UNGRADED CHANNEL, RACK
- 90 20'-0" X 12'-0" UNGRADED CHANNEL, RACK
- 91 20'-0" X 12'-0" UNGRADED CHANNEL, RACK
- 92 20'-0" X 12'-0" UNGRADED CHANNEL, RACK
- 93 20'-0" X 12'-0" UNGRADED CHANNEL, RACK
- 94 20'-0" X 12'-0" UNGRADED CHANNEL, RACK
- 95 20'-0" X 12'-0" UNGRADED CHANNEL, RACK
- 96 20'-0" X 12'-0" UNGRADED CHANNEL, RACK
- 97 20'-0" X 12'-0" UNGRADED CHANNEL, RACK
- 98 20'-0" X 12'-0" UNGRADED CHANNEL, RACK
- 99 20'-0" X 12'-0" UNGRADED CHANNEL, RACK
- 100 20'-0" X 12'-0" UNGRADED CHANNEL, RACK

PRO
A ELECTRICAL
PLUMBING
MECHANICAL
CONTRACTORS
1175 Main Street
Portland, ME 04102
Tel: 603.761.1111
Fax: 603.761.1112

**MECHANICAL-CENTRAL
UTILITY PLANT LEVEL 1**

Central Utility Plant
Portland, Maine

477 East Street
Portland, ME 04102
Tel: 603.761.1111
Fax: 603.761.1112

M401