

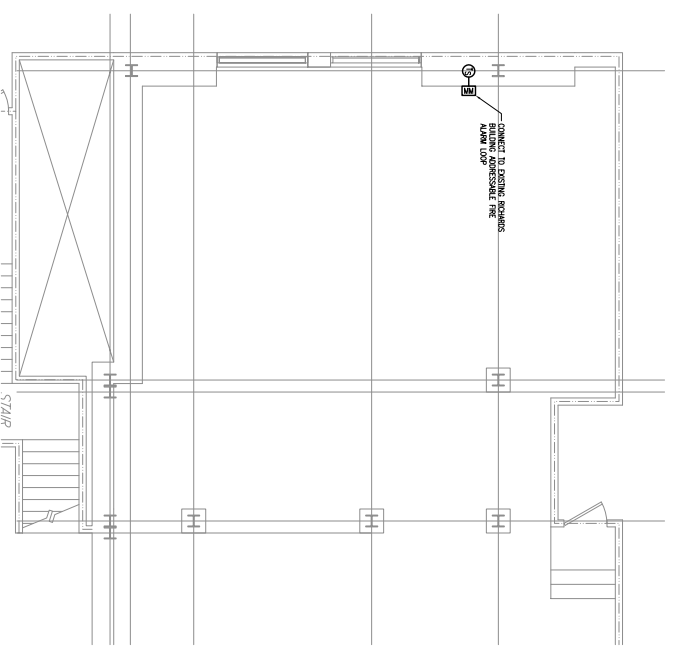
General Notes:

GENERAL NOTES:

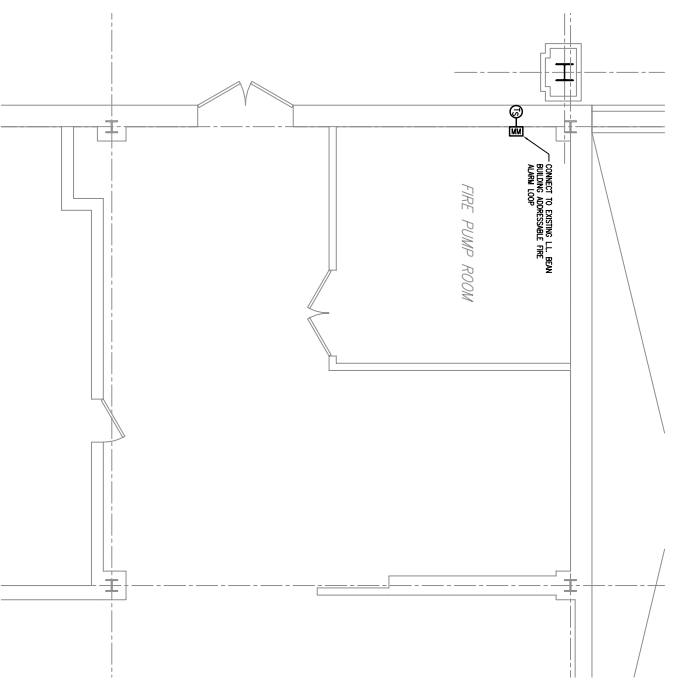
1. UNLESS NOTED OTHERWISE, ALL ELECTRICAL WORK SHALL BE IN ACCORDANCE WITH THE NATIONAL ELECTRICAL CODE (NEC) AND THE MAINE ELECTRICAL CODE (MEC).
2. ALL ELECTRICAL WORK SHALL BE IN ACCORDANCE WITH THE MAINE ELECTRICAL CODE (MEC) AND THE NATIONAL ELECTRICAL CODE (NEC).
3. ALL ELECTRICAL WORK SHALL BE IN ACCORDANCE WITH THE MAINE ELECTRICAL CODE (MEC) AND THE NATIONAL ELECTRICAL CODE (NEC).

DRAWING NOTES:

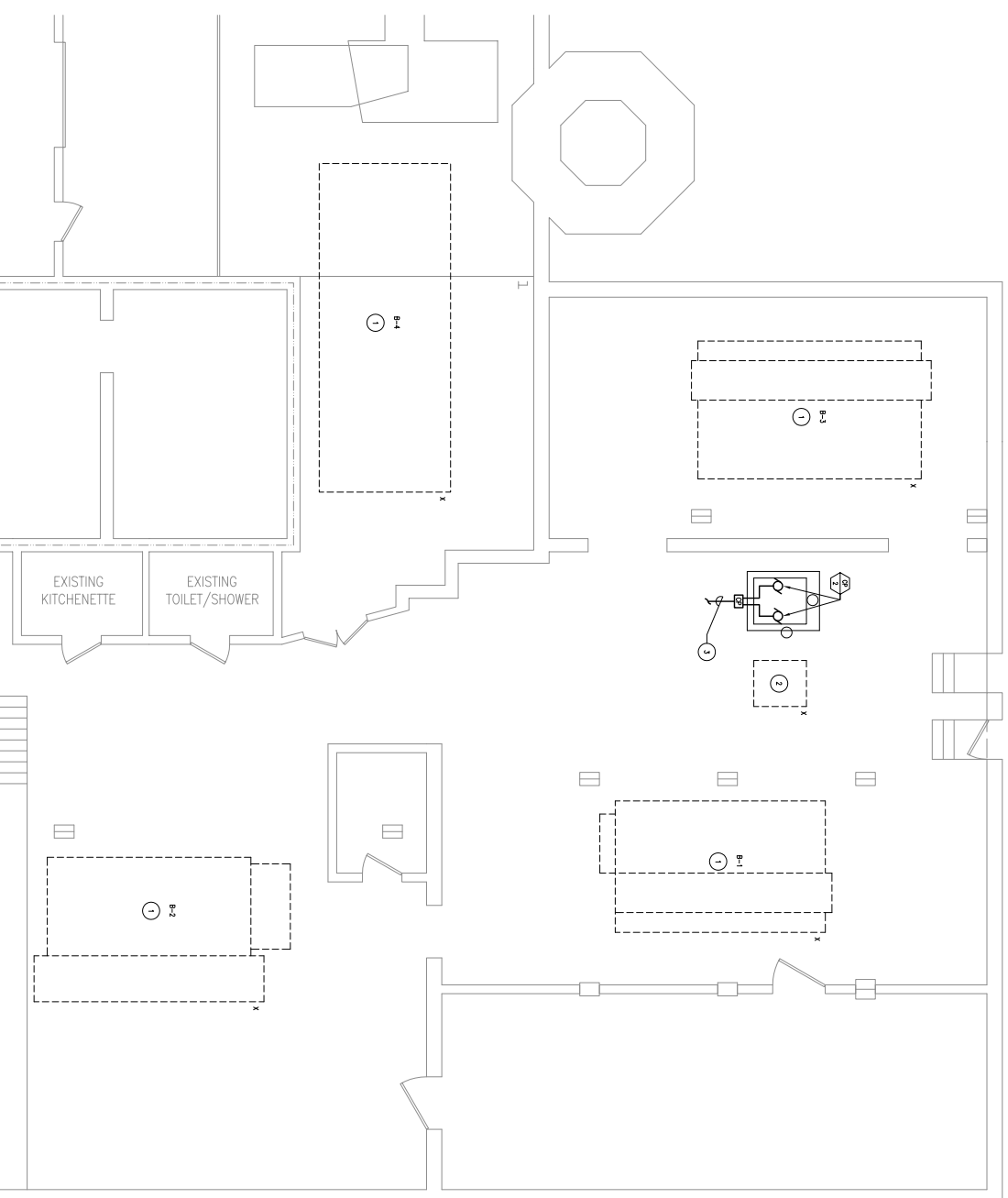
1. EXISTING SIGNALS TO BE RECOMMENDED, DISCONNECTED AND REMOVED. SEE DRAWING FOR DETAILS.
2. EXISTING CONDUIT SHALL BE RECOMMENDED, DISCONNECTED AND REMOVED. SEE DRAWING FOR DETAILS.
3. NEW CONDUIT SHALL BE INSTALLED IN ACCORDANCE WITH THE MAINE ELECTRICAL CODE (MEC) AND THE NATIONAL ELECTRICAL CODE (NEC).
4. NEW CONDUIT SHALL BE INSTALLED IN ACCORDANCE WITH THE MAINE ELECTRICAL CODE (MEC) AND THE NATIONAL ELECTRICAL CODE (NEC).



1 EXISTING RICHARDS BASEMENT SIGNAL PLAN
1/2"=1'-0"

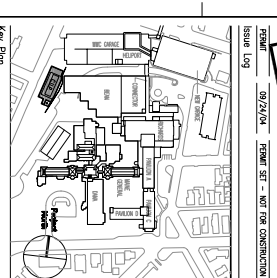


2 EXISTING L.L. BEAN SUB-BASEMENT SIGNAL PLAN
1/2"=1'-0"



3 EXISTING BOILER PLANT POWER PLAN
1/2"=1'-0"

SCALE: 1/2"=1'-0"
DATE: 09/24/14
PROJECT: RICHARDS SUB-BASEMENT CONSTRUCTION
SHEET: 01



TRO
ARCHITECTURE
PLANNING
INTERIORS
LANDSCAPE ARCHITECTURE
The Richards Center
1000 Congress Ave
Portland, ME 04106
Tel: 603.763.1111

Maine Medical Center
Central Utility Plant
Portland, Maine

ELECTRICAL
PART PLANS
SHEET 2

Commission No. 4277
Scale No. 1/2"=1'-0"
Drawing No. 4277-01
Project No. 1000 Congress Ave
Portland, ME 04106
E501