

General Notes:

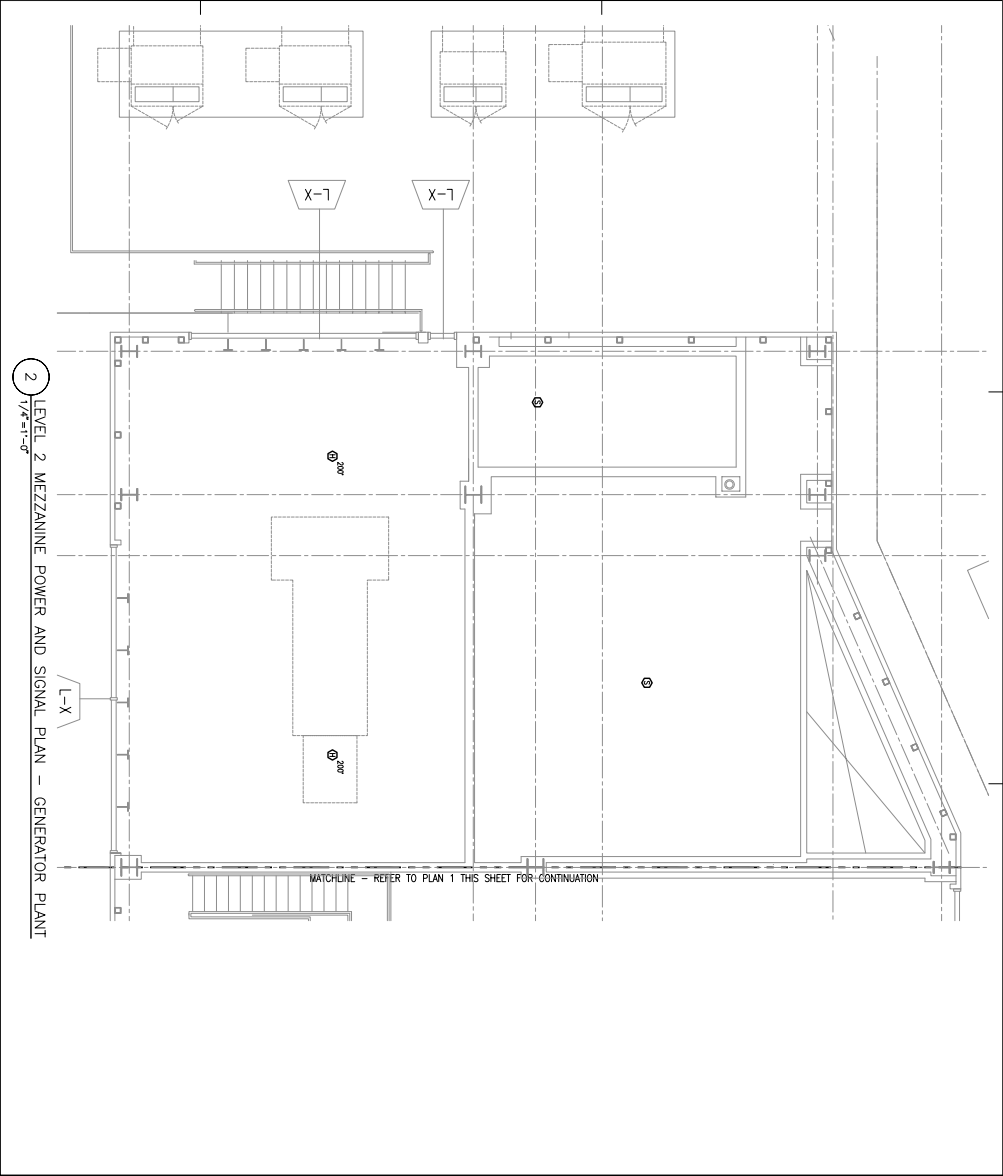
GENERAL NOTES:

1. MATCH WITH GENERAL NOTES TO MAIN DATA SHEET ON SHEET E301 FOR ELECTRICAL, OVERCURRENT PROTECTION, RACE, SIZE, AND EQUIPMENT SIZE REQUIREMENTS.

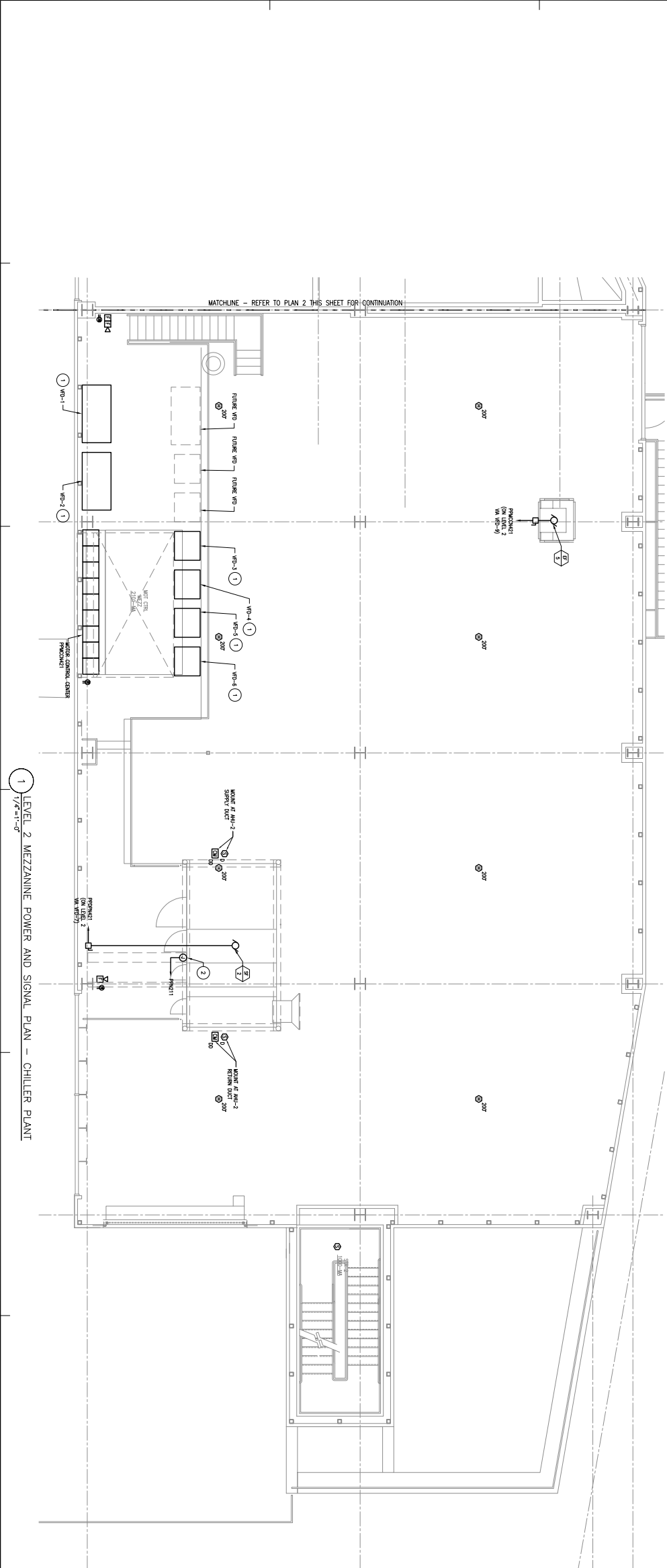
DRAWING NOTES:

1. VFD WITH INTEGRAL OVERCURRENT PROTECTION, BRACE AND EXHAUST FAN FOR THE MOTOR AND VFD UNIT FOR THE MOTOR. VFD SHALL BE INSTALLED IN ACCORDANCE WITH THE NATIONAL ELECTRICAL CODE (NEC) REQUIREMENTS.

2. TYPICAL CONNECTION TO AHU-2 FOR FAN, PUMPS AND LIGHTING CIRCUIT.



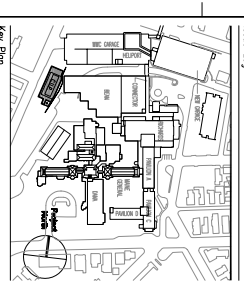
2 LEVEL 2 MEZZANINE POWER AND SIGNAL PLAN - GENERATOR PLANT
1/4"=1'-0"



1 LEVEL 2 MEZZANINE POWER AND SIGNAL PLAN - CHILLER PLANT
1/4"=1'-0"

ISSUE DATE: 08/21/24
FOR PERMIT ONLY
NOT FOR CONSTRUCTION

PROJECT SET - NOT FOR CONSTRUCTION
08/21/24



TRO
A ARCHITECTURE
PLANNING
ENGINEERING
INTERIOR DESIGN
The Maine Center
1000 Congress Street
Portland, ME 04102
Tel: 603.761.1100
www.troarch.com

Maine Medical Center
Central Utility Plant
Portland, Maine

PROJECT NO. 4377
COMMISSIONER NO. 4377
DATE: 08/21/24
DRAWING NO. E302.M
SCALE: 1/4"=1'-0"