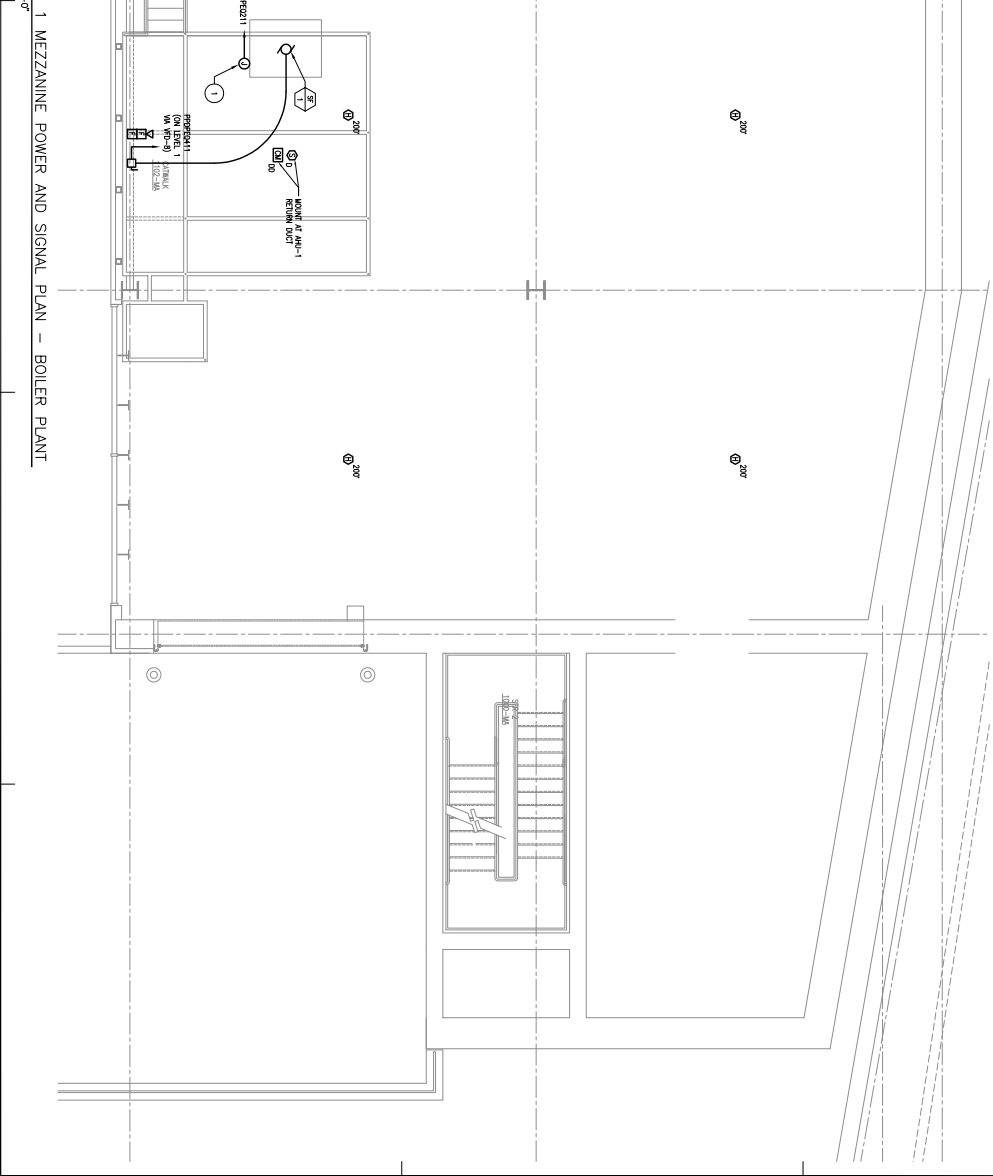
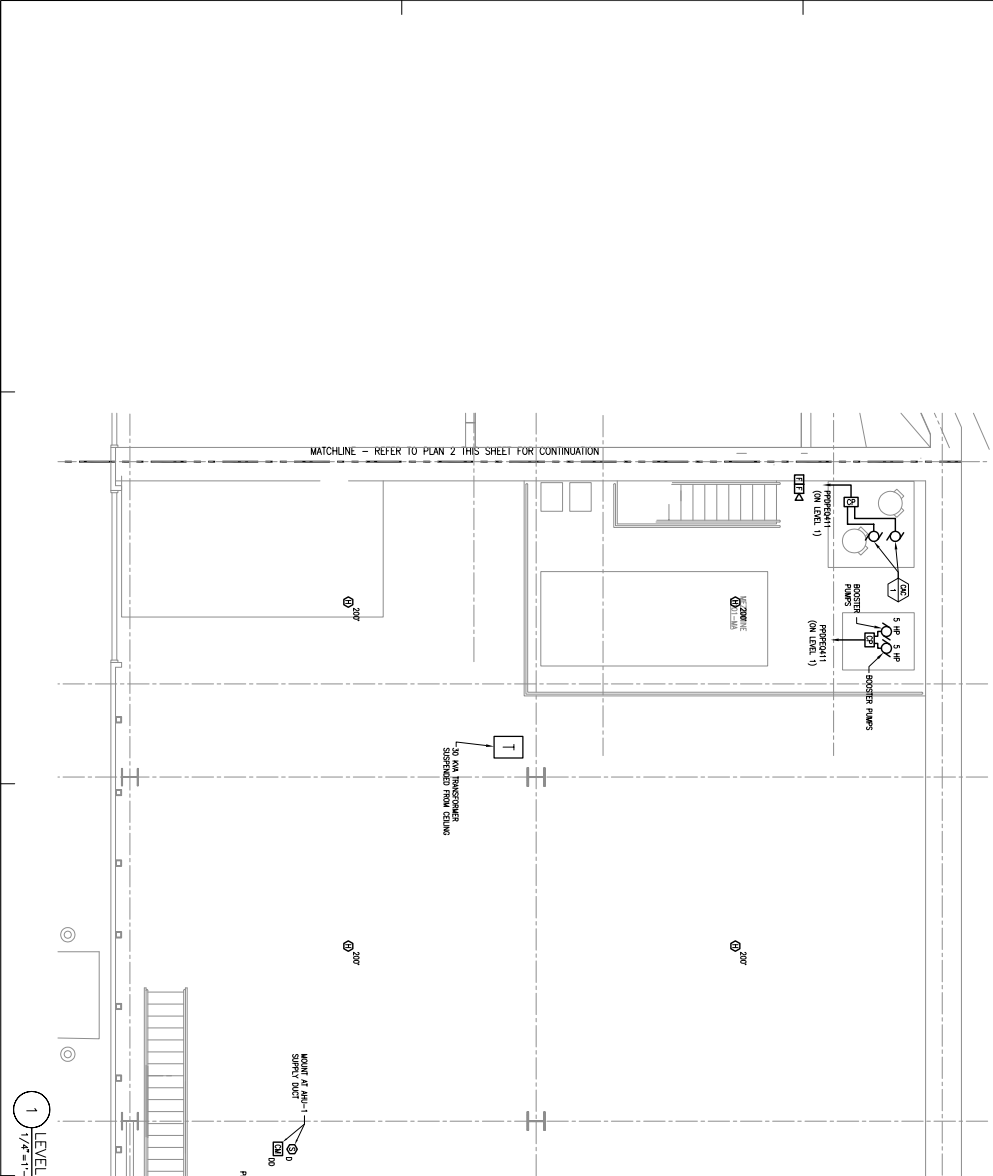
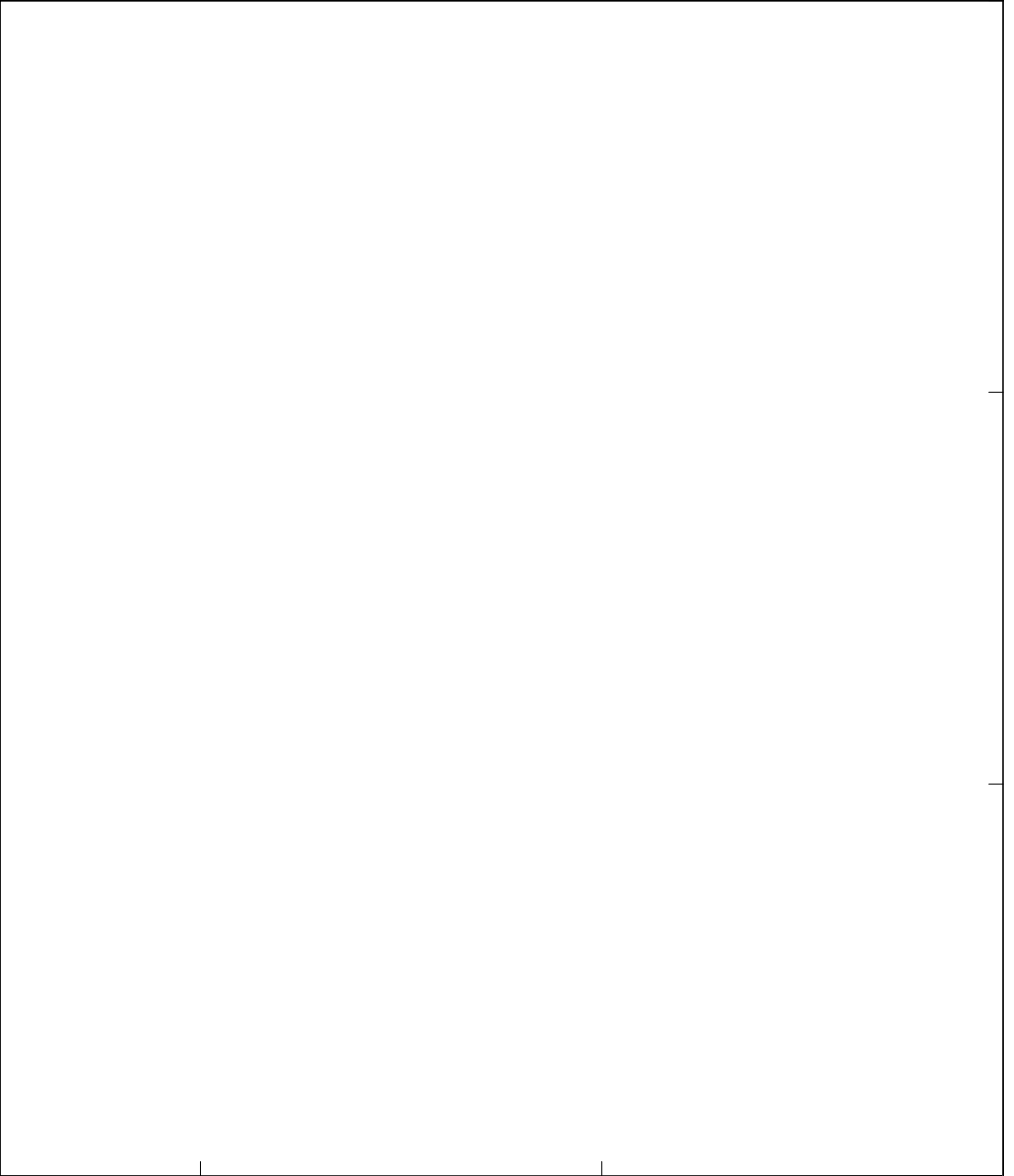
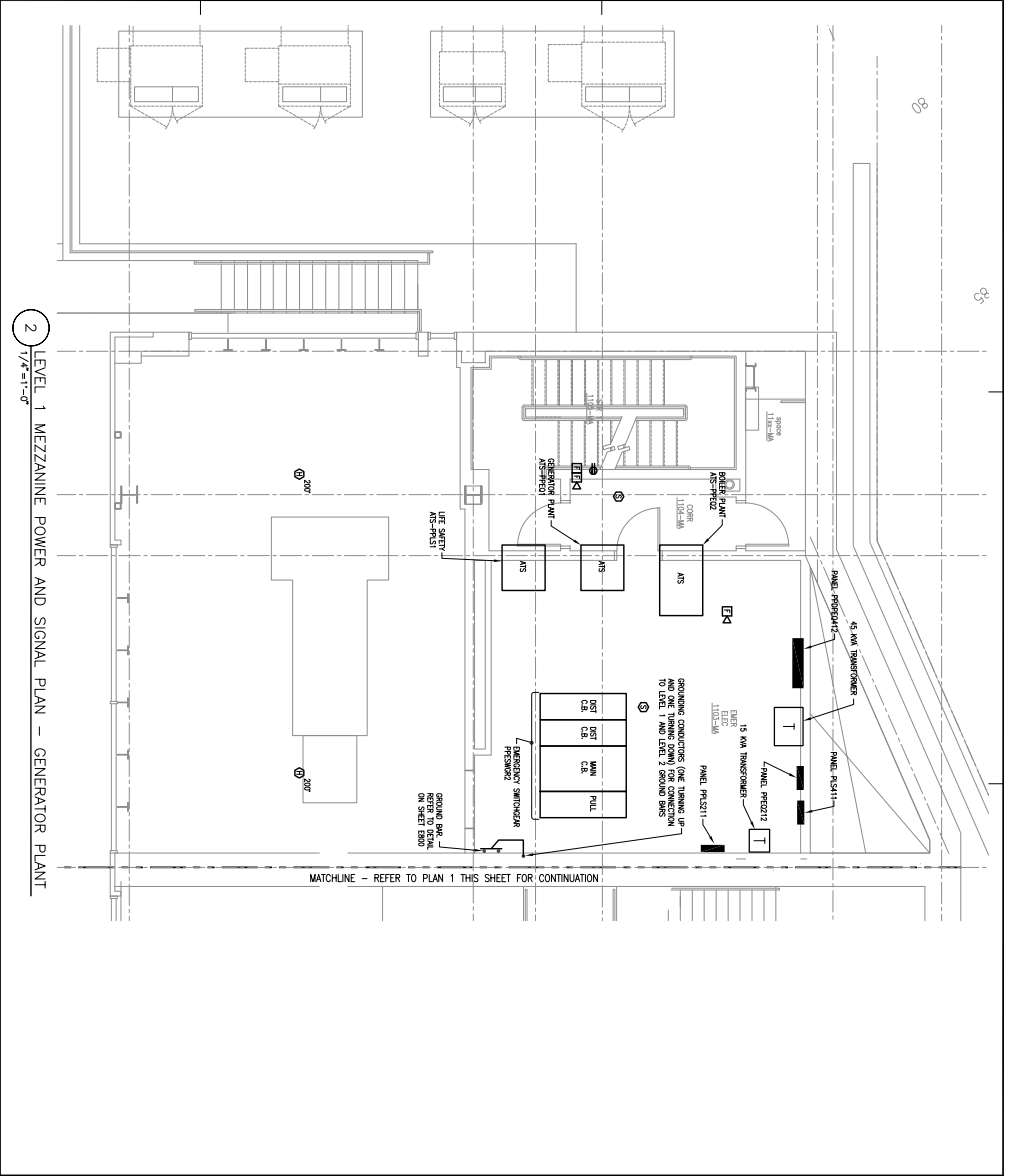
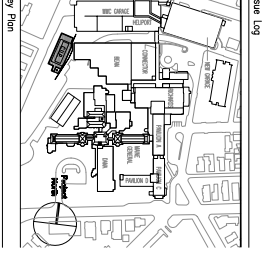


General Notes:
 GENERAL NOTES:
 1. UNLESS NOTED OTHERWISE, REFER TO MAINE STATE ELECTRICAL CODE FOR ELECTRICAL, MECHANICAL, PLUMBING, AND HVAC SYSTEMS AND MECHANICAL SYSTEMS.
 2. REFER TO THE PROJECT'S SPECIFICATIONS FOR MATERIALS, EQUIPMENT, AND FINISHES.
 3. REFER TO THE PROJECT'S SPECIFICATIONS FOR MATERIALS, EQUIPMENT, AND FINISHES.
 4. REFER TO THE PROJECT'S SPECIFICATIONS FOR MATERIALS, EQUIPMENT, AND FINISHES.
 5. REFER TO THE PROJECT'S SPECIFICATIONS FOR MATERIALS, EQUIPMENT, AND FINISHES.



DATE: 08/24/24
 PROJECT: MAINE MEDICAL CENTER
 DRAWING: E301.M
 SHEET: 1 OF 1



Maine Medical Center
 Central Utility Plant
 Portland, Maine

Electrical - Central Utility Plant Level 1 Mezz. Power and Signal Plans
 E301.M