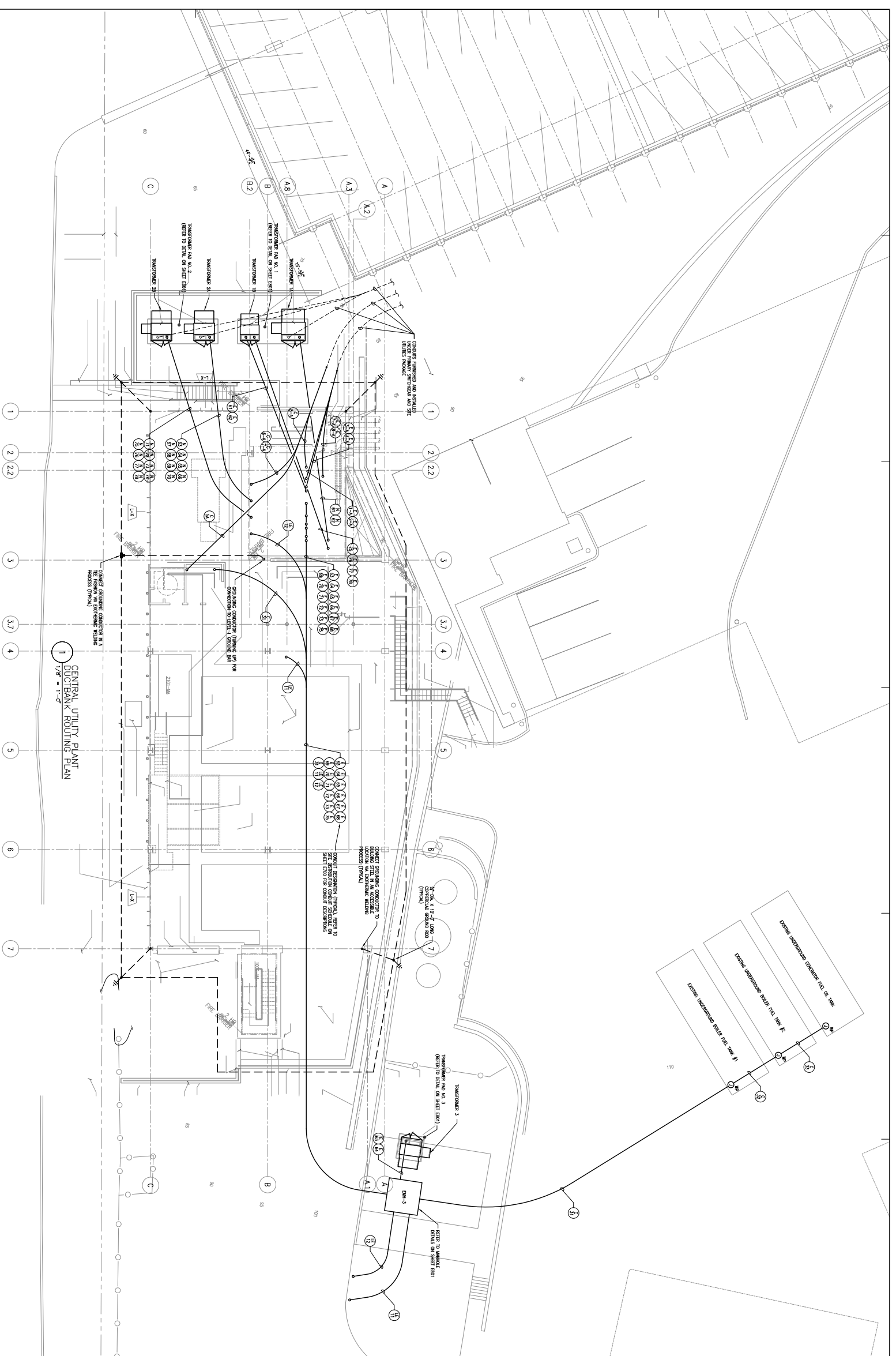
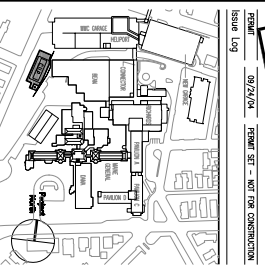


- GENERAL NOTES:**
1. ALL CONDUIT SHALL BE INSTALLED IN ACCORDANCE WITH THE NATIONAL ELECTRICAL CODE (NEC) AND THE MANUFACTURER'S INSTRUCTIONS. UNLESS SPECIFICALLY NOTED OTHERWISE.
  2. ALL CONDUIT SHALL BE INSTALLED IN ACCORDANCE WITH THE NATIONAL ELECTRICAL CODE (NEC) AND THE MANUFACTURER'S INSTRUCTIONS. UNLESS SPECIFICALLY NOTED OTHERWISE.
  3. CONDUIT SHALL BE INSTALLED IN ACCORDANCE WITH THE NATIONAL ELECTRICAL CODE (NEC) AND THE MANUFACTURER'S INSTRUCTIONS. UNLESS SPECIFICALLY NOTED OTHERWISE.
  4. ALL CONDUIT SHALL BE INSTALLED IN ACCORDANCE WITH THE NATIONAL ELECTRICAL CODE (NEC) AND THE MANUFACTURER'S INSTRUCTIONS. UNLESS SPECIFICALLY NOTED OTHERWISE.



SCALE SHEET  
**FOR PERMIT ONLY**  
**NOT FOR CONSTRUCTION**



**PRO**  
 A ARCHITECTURE  
 PLANNING  
 ENGINEERING  
 CONSULTING  
 1177 BROAD STREET  
 PORTLAND, ME 04108  
 TEL: 603-876-1100  
 FAX: 603-876-1101  
 WWW.PROARCHITECTURE.COM

**Maine Medical Center**  
 Central Utility Plant  
 Portland, Maine

**ELECTRICAL**  
 CENTRAL UTILITY PLANT  
 DUCTBANK ROUTING PLAN

Commission No.	4877	Scale	1/8" = 1'-0"
Drawn By	NLS	Sheet Number	E021
Checked By	NLS		
Reviewed By	4877SS-001		
Project Name	Maine Medical Center		