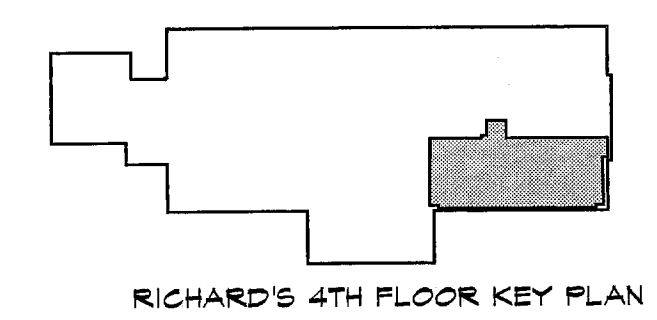


- GENERAL NOTES:**
1. REPAIR OR REPLACE EXISTING CEILING TILES AS NEEDED.
 2. ALL CEILINGS 8'-0" A.F.F. UNLESS NOTED OTHERWISE. COORDINATE W/ EXISTING WINDOW HEADS
 3. ALL SOFFITS ARE 7'-6" A.F.F. UNLESS NOTED OTHERWISE
 4. EXISTING GWB CEILINGS & SOFFITS TO BE PATCHED, REPAIRED, & PAINTED
 5. ALL SOFFITS ABOVE UPPER CABINETS ARE 7'-0" A.F.F. UNLESS NOTED OTHERWISE

CEILING LEGEND:

	A.C.T.
	CURTAIN TRACK/IV TRACK
	2 X 4 FLORESCENT FIXTURE
	2 X 2 FLORESCENT FIXTURE
	RECESSED DOWN LIGHT
	RECESSED DOWN LIGHT W/ DIMMER
	RECESSED OPERABLE EXAM LIGHT
	SUSPENDED FLORESCENT FIXTURE
	CEILING HEIGHT
	UNDER CABINET LIGHT
	SUPPLY DUCT
	RETURN DUCT
	EXIT SIGNAGE

REMOVE EXIST. CEILING, FIXTURES & GRID IN DC-R407 AS NECESSARY FOR INSTALLATION OF NEW CABLE TRAY. REINSTALL CEILING, FIXTURES & GRID. CONTRACTOR TO COORDINATE.



REFLECTED CEILING PLAN

F:\Acad\PROJ\021\dwg\Sheets\021-A111.dwg May 24, 2004 - 8:59am