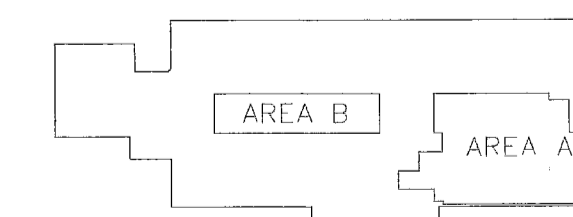


POWER & SYSTEMS NOTES:

- ① RE-INSTALL EXISTING DEVICE.
- ② PROVIDE 3/4" SLEEVE FROM CORRIDOR ABOVE CEILING TO PATIENT ROOM ABOVE CEILING FOR VOICE AND DATA.
- ③ PROVIDE A 2-GANG BACK BOX. PROVIDE (2) 3/4" CONDUITS WITH RUBBER GROMMETS AND PULL STRING, (1 FROM EACH SIDE OF THE 2-GANG BOX). ONE CONDUIT TO THE PATIENT ROOM ABOVE THE CEILING AND THE SECOND TO THE 6" CABLE TRAY. MOUNT CORRIDOR LIGHTS AT LEAST 80" ON THE FACE OF THE SOFFIT.
- ④ EXISTING DEVICE TO REMAIN.
- ⑤ COORDINATE RECEPTACLE MOUNTING WITH ACTUAL EQUIPMENT REQUIREMENTS.
- ⑥ PROVIDE "R.A.C.E." PLACARD AT ALL PULLSTATIONS.



RICHARD'S 3RD FLOOR KEY PLAN



Neill and Gunter

POWER AND SYSTEMS PLAN

CAD FILE 25485E002