



ARCHITECTS
INTERIORS
PLANNERS

55 GREEN STREET
PORTSMOUTH, NH 03801
T 603.436.2551
F 603.436.6973
www.jsainc.com

NEILL & GUNTER, Inc.
Design and Consulting Engineers
Scarborough, Maine

RENOVATIONS TO
RICHARD'S 3rd FLOOR

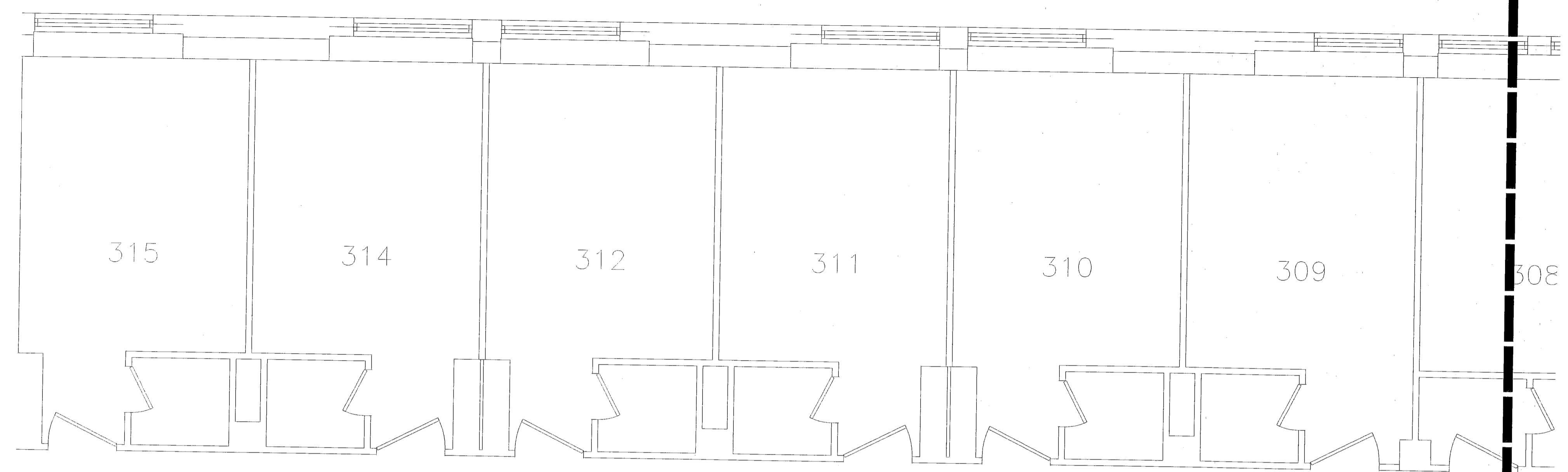
MAINE MEDICAL CENTER
Portland, Maine

Scale: 1/4" = 1'-0"
Project Number: 03-103
Date: MAY 25, 2004
Revisions:



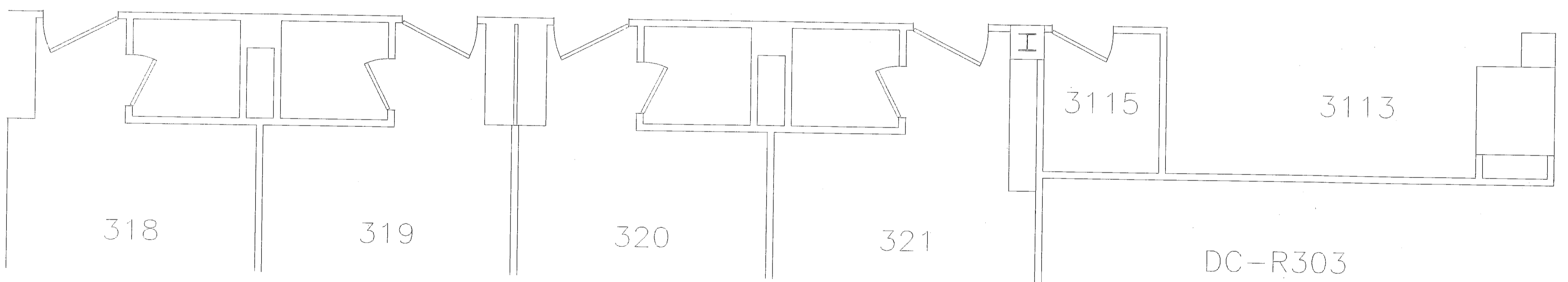
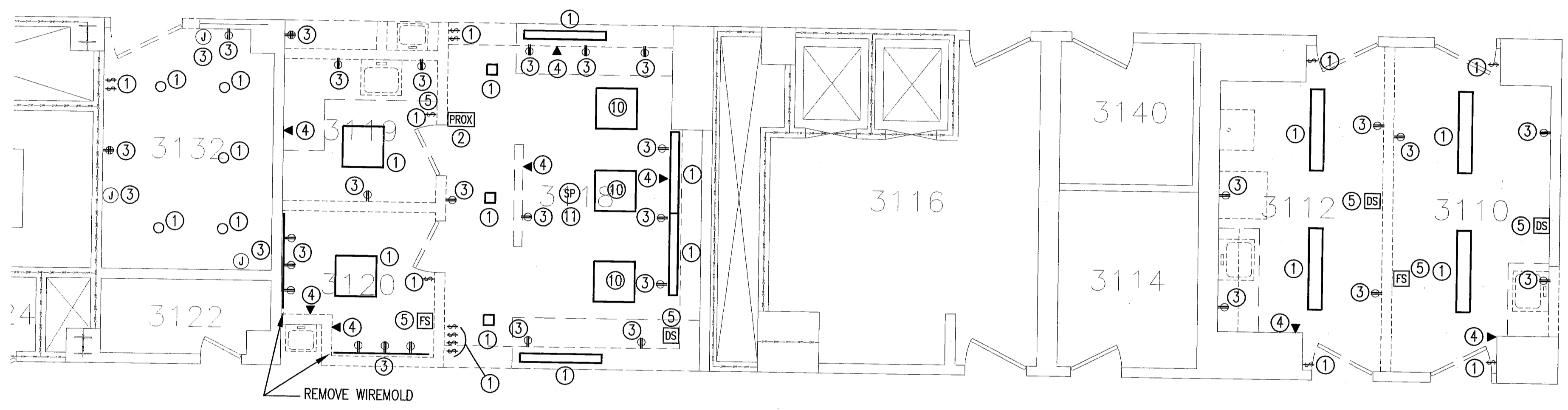
CONSTRUCTION
DOCUMENTS

ED-1B



DEMOLITION NOTES:

- ① EXISTING LIGHT FIXTURE AND SWITCH TO BE REMOVED.
- ② EXISTING PROXIMITY CARD READER, MOTION DETECTOR AND DOOR STRIKE HARDWARE TO BE REMOVED, STORED AND RE-INSTALLED UNDER NEW WORK, OR TURNED OVER TO HOSPITAL IF UNUSED. CABLING TO THESE DEVICES SHALL BE COILED, MARKED AND PROTECTED DURING DEMOLITION/CONSTRUCTION.
- ③ EXISTING RECEPTACLE OR POWER OUTLET TO BE REMOVED.
- ④ EXISTING SPEAKER, TELEVISION, TELEPHONE, DATA DEVICE TO BE REMOVED, STORED AND RE-INSTALLED UNDER NEW WORK, OR TURNED OVER TO HOSPITAL IF UNUSED. CABLING TO THESE DEVICES SHALL BE COILED, MARKED AND PROTECTED DURING DEMOLITION/CONSTRUCTION.
- ⑤ EXISTING FIRE ALARM DEVICE, NURSE CALL DEVICE OR EXIT SIGN TO BE REMOVED, STORED AND RE-INSTALLED UNDER NEW WORK, OR TURNED OVER TO HOSPITAL IF UNUSED. CABLING TO THESE DEVICES SHALL BE COILED, MARKED AND PROTECTED DURING DEMOLITION/CONSTRUCTION.
- ⑥ EXISTING FIRE ALARM DEVICE, EXIT SIGN, CLOCK, SPEAKER, TELEPHONE, RECEPTACLE, LIGHT FIXTURE, SWITCH OR NURSE CALL DEVICE TO REMAIN.
- ⑦ EXISTING PANEL REMAINS.
- ⑧ REMOVE EXISTING LOAD CENTER. REMOVE 60A FEEDER BACK TO PANEL "LP42". REMOVE 60A BREAKER FROM POLES 31,33,35 IN PANEL "LP42".
- ⑨ EXISTING "DUKANE" NURSE CALL CONTROL PANEL REMAINS.
- ⑩ LIGHT FIXTURE TO BE REMOVED, STORED AND RE-INSTALLED UNDER NEW WORK.
- ⑪ EXISTING SPEAKER TO BE REMOVED, STORED AND RE-INSTALLED UNDER NEW WORK.

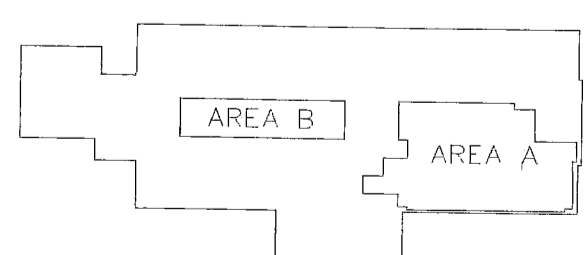


DC-R3

DC-R306

DC-R3

WATCH LINE



RICHARD'S 3RD FLOOR KEY PLAN



Neill and Gunter

ELECTRICAL DEMOLITION PLAN
CAD FILE 25485E001

L:\25485\Cad\25485E001.dwg May 24, 2004 - 1:40pm