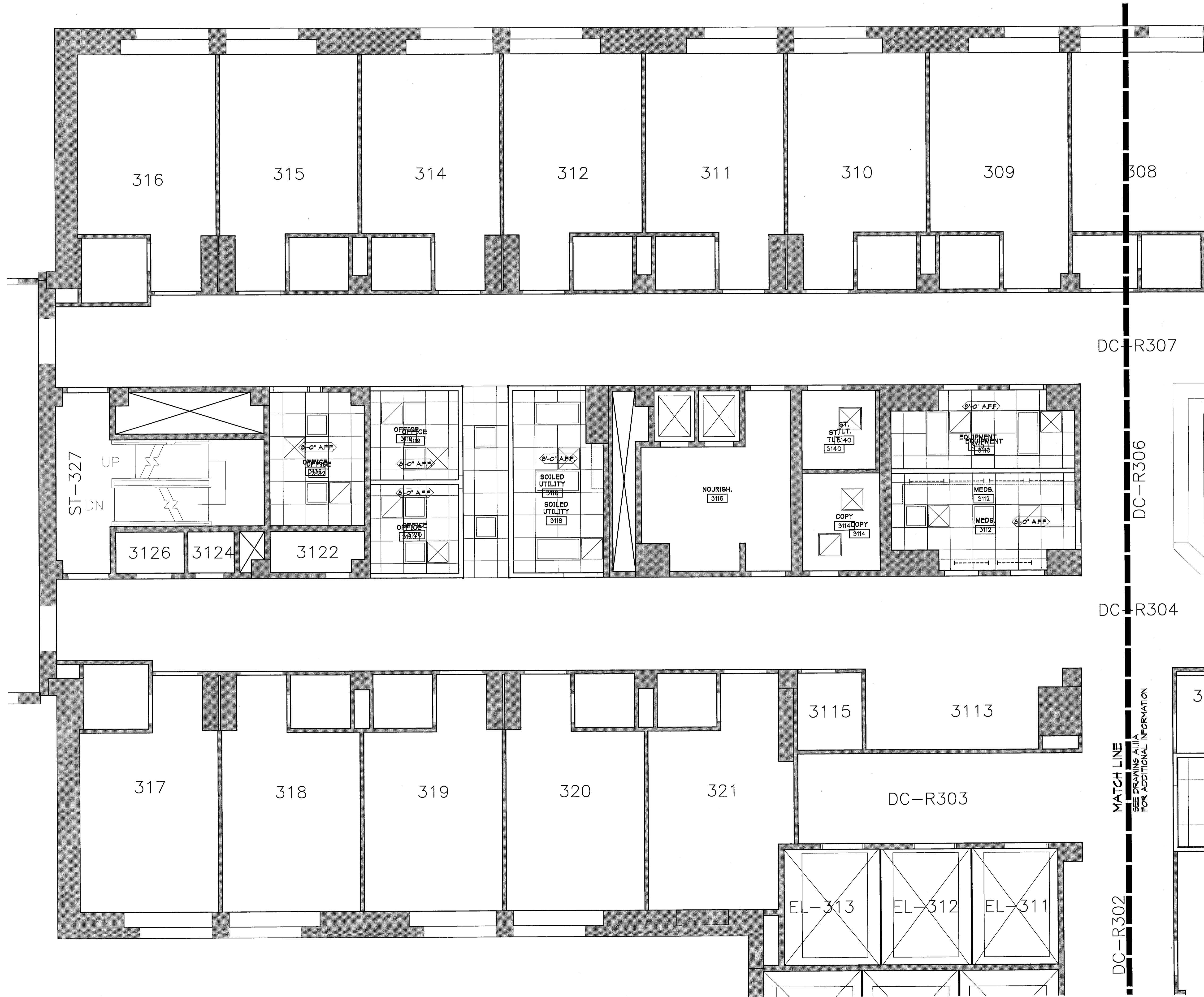


Scale: 1/4" = 1'-0"  
Project Number: 03-103  
Date: May 25, 2004  
Revisions:



**GENERAL NOTES:**

- REPAIR OR REPLACE EXISTING CEILING TILES AS NEEDED.
- ALL CEILINGS 8'-0" A.F.F. UNLESS NOTED OTHERWISE. COORDINATE W/ EXISTING WINDOW HEADS
- ALL SOFFITS ARE 7'-2" A.F.F. UNLESS NOTED OTHERWISE
- EXISTING GWS CEILINGS & SOFFITS TO BE PATCHED, REPAIRED, & PAINTED
- ALL SOFFITS ABOVE UPPER CABINETS ARE 7'-2" A.F.F. UNLESS NOTED OTHERWISE

**CEILING LEGEND:**

- A.C.T.
- CURTAIN TRACK/IV TRACK
- 2 X 4 FLORESCENT FIXTURE
- 2 X 2 FLORESCENT FIXTURE
- RECESSED DOWN LIGHT
- RECESSED DOWN LIGHT W/ DIMMER
- RECESSED OPERABLE EXAM LIGHT
- SUSPENDED FLORESCENT FIXTURE
- CEILING HEIGHT
- UNDER CABINET LIGHT
- SUPPLY DUCT
- RETURN DUCT
- EXIT SIGNAGE

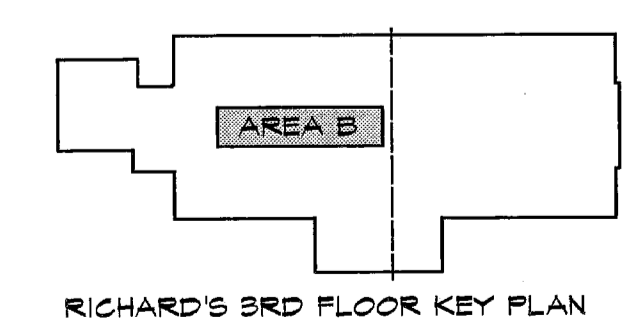
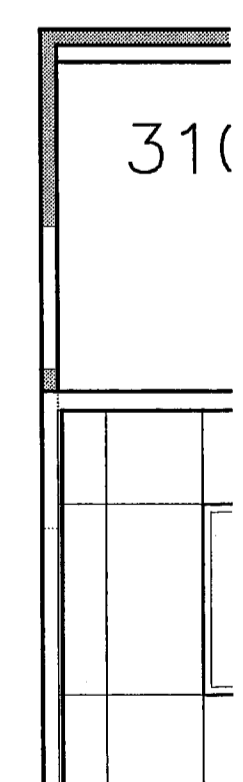
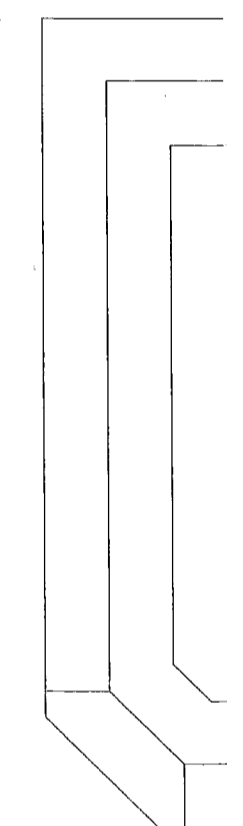
DC-R307

DC-R306

DC-R304

MATCH LINE  
SEE DRAWING A1.11A  
FOR ADDITIONAL INFORMATION

DC-R302



REFLECTED CEILING PLAN

F:\Acad\PROA\103\10-Sheet\103-A1.11B.dwg May 24, 2004 - 7:50am