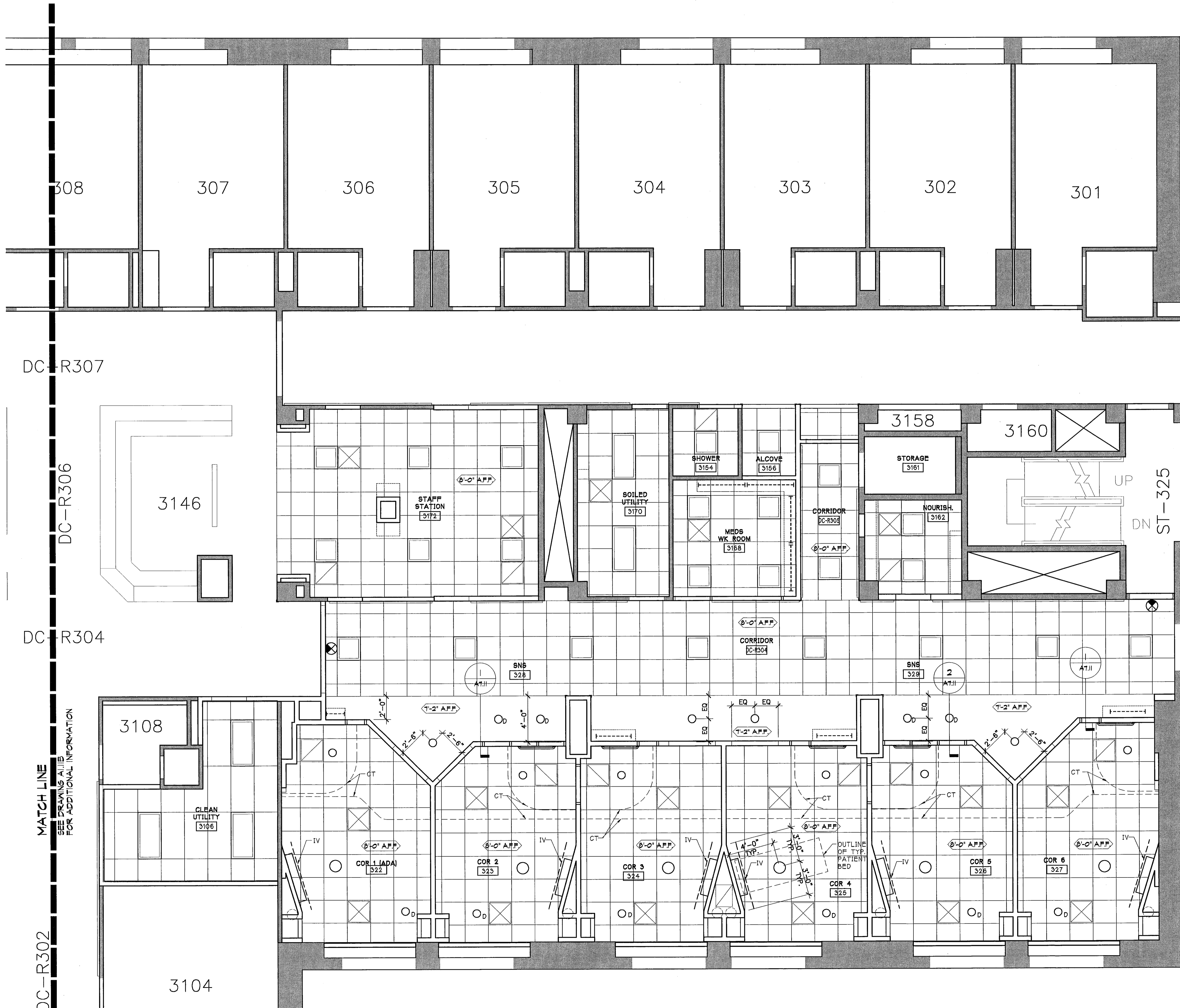


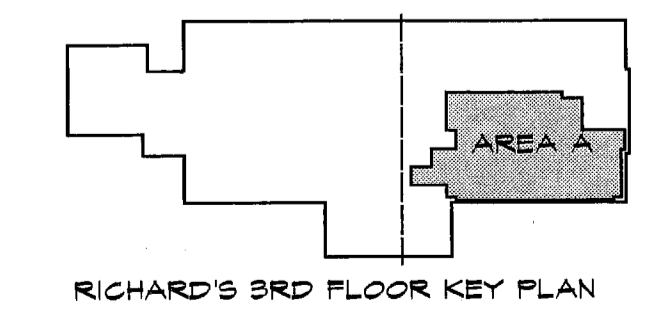


Scale: 1/4" = 1'-0"  
Project Number: 03-103  
Date: May 25, 2004  
Revisions:



- GENERAL NOTES:**
- REPAIR OR REPLACE EXISTING CEILING TILES AS NEEDED.
  - ALL CEILINGS 8'-0" A.F.F. UNLESS NOTED OTHERWISE. COORDINATE W/ EXISTING WINDOW HEADS
  - ALL SOFFITS ARE 7'-2" A.F.F. UNLESS NOTED OTHERWISE
  - EXISTING GWB CEILINGS & SOFFITS TO BE PATCHED, REPAIRED, & PAINTED
  - ALL SOFFITS ABOVE UPPER CABINETS ARE 7'-2" A.F.F. UNLESS NOTED OTHERWISE

- CEILING LEGEND:**
- A.C.T.
  - CURTAIN TRACK/IV TRACK
  - 2 X 4 FLORESCENT FIXTURE
  - 2 X 2 FLORESCENT FIXTURE
  - RECESSED DOWN LIGHT
  - RECESSED DOWN LIGHT W/ DIMMER
  - RECESSED OPERABLE EXAM LIGHT
  - SUSPENDED FLORESCENT FIXTURE
  - CEILING HEIGHT
  - UNDER CABINET LIGHT
  - SUPPLY DUCT
  - RETURN DUCT
  - EXIT SIGNAGE



REFLECTED CEILING PLAN

F:\meca\PROCA\103\10-Sheet\103-A111A.dwg May 24, 2004 - 7:48am