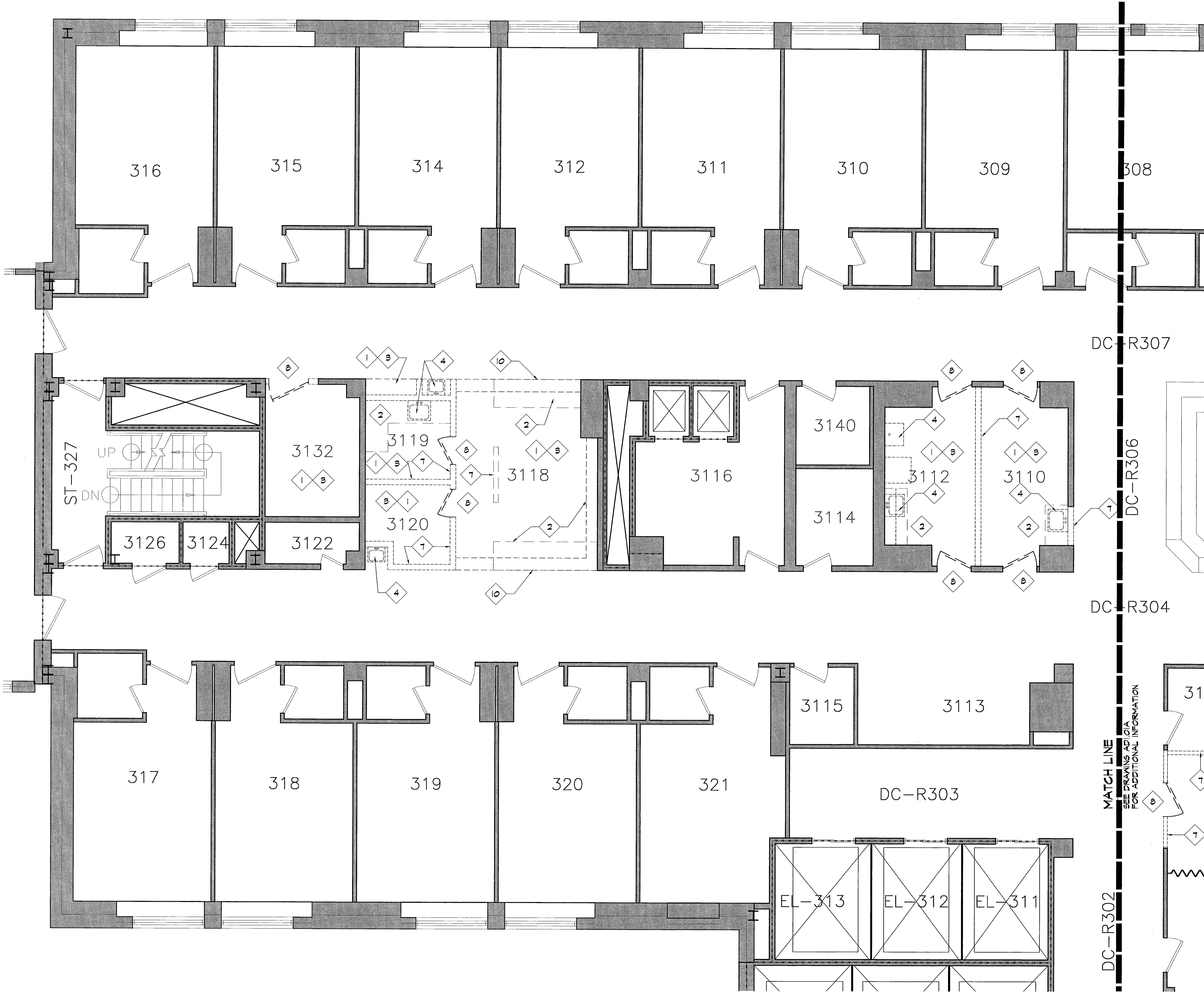


F:\Acad\PROJ\VP103\1-a-Sheet\VP103-AD101B.dwg May 24, 2004 - 8:20am



DEMOLITION GENERAL NOTES:

A. ALL DEMOLITION WORK SHALL CONFORM TO ALL LOCAL, STATE, AND NATIONAL SAFETY CODES.

B. MAINTAIN INTEGRITY OF ALL EXISTING FIRE RATED ASSEMBLIES TO REMAIN, INCLUDING ENCLOSURES AT COLUMNS, STAIRS AND SHAFTS.

C. PROTECT ALL EXISTING FINISHES, MILLWORK AND CONSTRUCTION TO REMAIN.

D. BEFORE STARTING WORK, THE CONTRACTOR SHALL VERIFY EXISTING CONDITIONS, INCLUDING DIMENSIONS AND ELEVATIONS. THE CONTRACTOR SHALL PREPARE A LIST OF EXISTING DAMAGED AREAS, DOCUMENTED BY DATED PHOTOGRAPHS AND SIGNED BY THE PERSON CONDUCTING THE INVESTIGATION. PRESENT TO OWNER FOR VERIFICATION PRIOR TO STARTING DEMOLITION.

E. CONTRACTOR SHALL COORDINATE DEMOLITION OPERATIONS WITH THE OWNER, AND PROCURE PRIOR APPROVAL FOR ALL DEMOLITION PROCEDURES, INCLUDING USE OF BUILDING FACILITIES, PLACEMENT OF DUMPSTERS, REFUSE REMOVAL, AND PHASING.

F. CONTRACTOR SHALL COORDINATE REMOVAL AND STORAGE OF ALL SALVAGED ITEMS WITH THE OWNER.

G. PROTECT AND MAINTAIN THE OPERATION OF ANY EXISTING SYSTEMS TO REMAIN FUNCTIONAL DURING THE PROJECT. PROCURE PRIOR APPROVAL FROM THE OWNER FOR ANY SHUTDOWNS REQUIRED.

H. CONTRACTOR TO VERIFY STRUCTURAL CONDITIONS BEFORE DEMOLITION BEGINS. PROVIDE TEMPORARY OR PERMANENT STRUCTURE AS REQUIRED.

I. MISC. EQUIPMENT OR FURNISHINGS SHALL BE STORED OR REMOVED AT THE DISCRETION OF THE OWNER.

J. REPAIR & PREPARE EXISTING WALLS, FLOORS, AND CLGS. TO RECEIVE NEW FINISHES.

K. WHERE PLUMBING FIXTURES ARE REMOVED, EXISTING PIPING SHALL BE CAPPED OR REMOVED. REFER TO PLUMBING DRAWINGS FOR DEMO OF PIPING.

L. WHERE ELECTRICAL FIXTURES ARE REMOVED, EXISTING WIRING SHALL BE REMOVED BACK TO ELECT. BOX. REFER TO ELECTRICAL DRAWINGS FOR DEMO OF WIRING/FIXTURES.

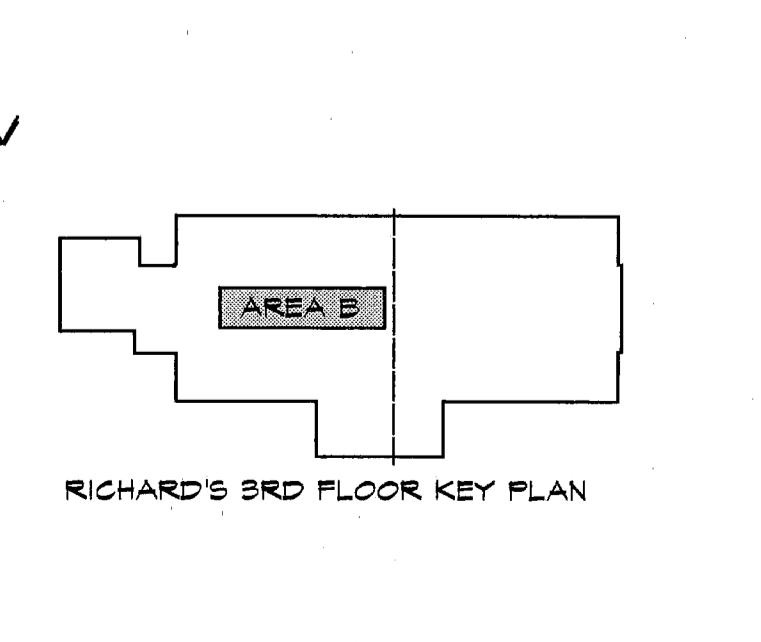
M. AFTER DEMOLITION, ALL ABANDONED PENETRATIONS SHALL BE PATCHED AND FIRE PROTECTED ACCORDING TO CODE.

N. ITEMS TO BE SALVAGED FOR RE-USE BY OWNER:

- DOOR HARDWARE
- ROLLING FILES
- LIGHTING, INCLUDING EMERGENCY LIGHTING
- FIRE EXTINGUISHERS
- SMOKE DETECTORS

O. CONTRACTOR TO PROTECT AREAS TO REMAIN OPERATIONAL FROM DUST AND DEBRIS. CONTRACTOR RESPONSIBLE FOR MAINTAINING AND CLEANING ANY AREAS EXPOSED TO DUST OR DEBRIS FROM DEMOLITION ACTIVITIES.

- DEMOLITION KEY NOTES:**
- 1 REMOVE EXISTING FLOORING AND ADHESIVE OR GROUT. PREPARE EXISTING FLOOR SLAB TO RECEIVE NEW FLOORING.
 - 2 REMOVE EXISTING COUNTERTOP AND/OR CABINETS. REFER TO PLUMBING DWGS FOR ANY REQ'D PIPING DEMOLITION.
 - 3 REMOVE EXISTING CEILING. REFER TO MECH. ELEC. AND PLUMBING DWGS FOR HVAC, WIRING AND SPRINKLER DEMOLITION. LIGHT FIXTURES TO BE SALVAGED FOR OWNER.
 - 4 REMOVE EXISTING PLUMBING FIXTURES. REFER TO PLUMBING DWGS FOR PIPING DEMOLITION.
 - 5 REMOVE INTERIOR SECTION OF EXISTING EXTERIOR WALL & PATCH.
 - 6 REMOVE CEILING CURTAIN TRACK & CURTAIN.
 - 7 REMOVE EXISTING PARTITION.
 - 8 REMOVE EXISTING DOOR & FRAME. SALVAGE FOR RE-USE BY OWNER.
 - 9 REMOVE EXISTING FOLDING PARTITION.
 - 9 REMOVE EXISTING SOFFIT/BULKHEAD.
 - 10 REMOVE EXISTING HEATING UNIT. REFER TO MECH. DWGS FOR ANY REQ'D MECH. DEMOLITION.



DC-R307

DC-R306

DC-R304

DC-R303

DC-R302

MATCH LINE SEE DRAWING AD101A FOR ADDITIONAL INFORMATION

JSA

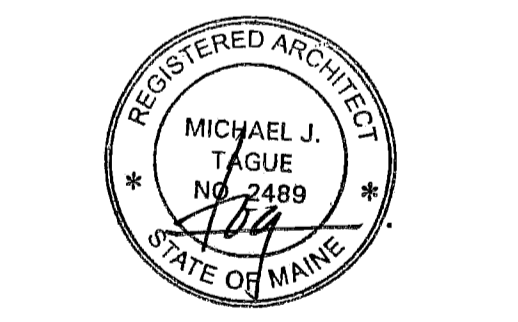
ARCHITECTS
INTERIORS
PLANNERS

55 GREEN STREET
PORTSMOUTH, NH 03801
T 603.436.2551
F 603.436.6973
www.jsainc.com

NEILL & GUNTER, Inc.
Design and Consulting Engineers
Scarborough, Maine

**RENOVATIONS TO
RICHARD'S 3rd FLOOR**

MAINE MEDICAL CENTER
Portland, Maine



Scale: 1/4" = 1'-0"
Project Number: 03-103
Date: May 25, 2004
Revisions:

**CONSTRUCTION
DOCUMENTS**

AD1.01B
© Copyright 2002, JSA, Inc

DEMOLITION PLAN