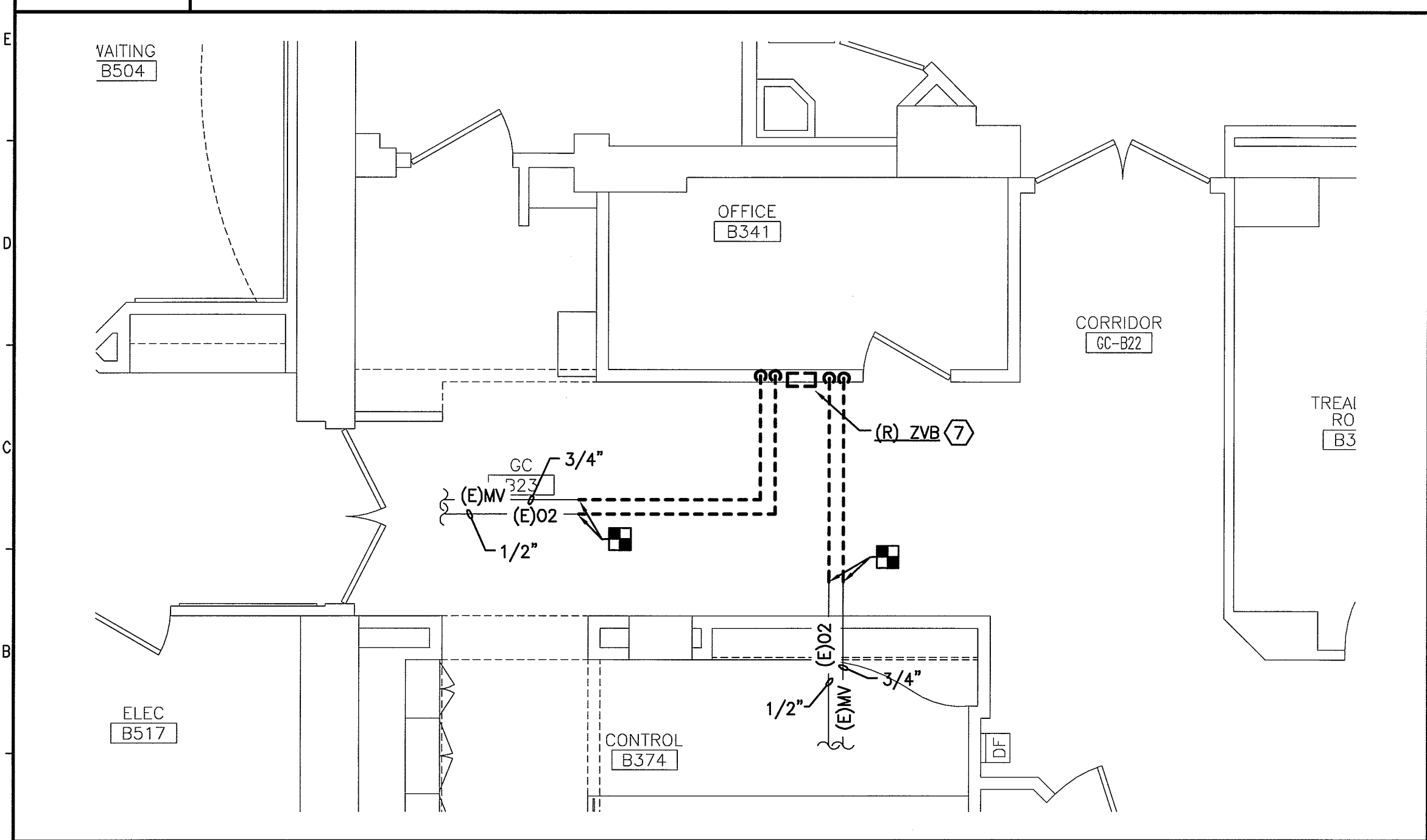


F1 PLUMBING PLAN
1/4"=1'-0"



A1 PLUMBING PART PLAN
1/4"=1'-0"

GENERAL NOTE:

- SEE SHEET P-001 FOR LEGEND AND ABBREVIATIONS.

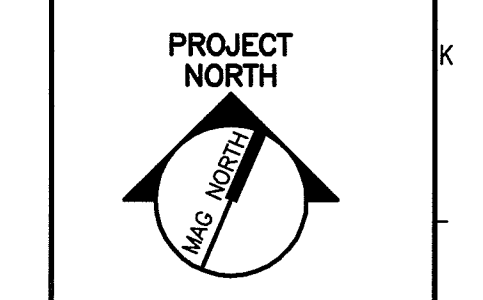
KEYED NOTES:

- REMOVE PLUMBING FIXTURES AND ALL ASSOCIATED TRIM—COMPLETELY. REMOVE EXISTING CW, HW, S AND V BRANCHES BACK TO WITHIN 4" OF MAIN AND CAP. PATCH WALL/FLOOR TO MATCH EXISTING.
- REMOVE O2 AND MV OUTLET AND ALL ASSOCIATED PIPING BACK TO WITHIN 4" OF MAIN AND CAP. PATCH WALL TO MATCH EXISTING.
- PREPARE 4" VENT PIPE TO RISE UP TO ACCOMMODATE NEW CEILING HEIGHT. COORDINATE WITH ARCHITECTURAL DRAWINGS FOR CEILING HEIGHT.
- PREPARE 1" HW AND 1-1/2" CW PIPE TO RISE UP TO ACCOMMODATE NEW CEILING HEIGHT. COORDINATE WITH ARCHITECTURAL DRAWINGS FOR CEILING HEIGHT.
- REMOVE EYEWASH STATION MIXING VALVE AND ALL ASSOCIATED PIPING BACK TO WITHIN 4" OF MAINS AND CAP. (TURN EYEWASH STATION AND MIXING VALVE OVER TO OWNER)
- REMOVE EXISTING CONDENSATE PIPE FROM (R) AHU (SEE MECHANICAL DRAWINGS) BACK TO THE LOCATION WHERE IT SPILLS.
- REMOVE 3/4" MV, 1/2" O2, ASSOCIATED ZVB AND PRESSURE MONITORS. TO ALLOW FOR INSTALLATION AND ACCESS TO NEW AHU.

144 Fore Street/P.O. Box 618
Portland, Maine 04104
tel. (207) 775-3846
fax. (207) 775-1070
www.smrtinc.com

ARCHITECTURE
ENGINEERING
PLANNING
INTERIOR DESIGN
COMMISSIONING

SMRT



**MAINE MEDICAL CENTER
NUCLEAR MEDICINE RENOVATIONS**
PORTLAND, MAINE

**ISSUED FOR CONSTRUCTION
3-13-14**

CURRENT ISSUE STATUS:

REV	DESCRIPTION	DATE
0	ISSUED FOR CONSTRUCTION	3-13-14

GRAPHIC SCALE:
0" 1"

SCALE: 1/4"=1'-0"

PROJECT MANAGER: DJV
JC/DRAWN BY: MP
A/E OF RECORD: KME
CAD FILE: PD101-13128
PROJECT NO: 13128
DATE: 3-13-14
SHEET TITLE:
**PLUMBING
DEMOLITION
PLAN**
SHEET No.
PD101
© COPYRIGHT 2013 SMRT INC.