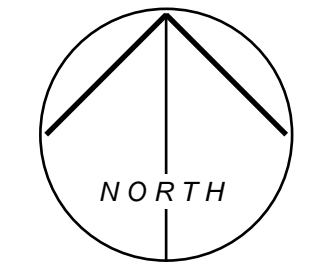


Legend

- R [Symbol] Remove surface mounted light fixture
- R [Symbol] Remove recessed light fixture
- R [Symbol] Remove duplex outlet
- EX [Symbol] Existing duplex outlet to remain
- 3-R [Symbol] Remove duplex outlet in quantity shown
- R [Symbol] Remove emergency power quad outlet
- R [Symbol] Remove telephone outlet and wiring
- 2T-R [Symbol] Remove telephone outlet and wiring in quantity shown
- R [Symbol] Remove data outlet and wiring
- D4-R [Symbol] Remove telephone outlet and wiring in quantity shown
- D4-R [Symbol] Remove junction box and data wiring in quantity shown
- PP-R [Symbol] Remove power pole and wiring
- [Symbol] Remove voice/data raceway and wiring. Relocate above proposed ceiling.
- [Symbol] Existing voice/data raceway to remain (open and close as required)
- RR [Symbol] Remove thermostat (relocate where shown: RL)
- E [Symbol] Existing nurse call station to remain
- R [Symbol] Remove nurse call station and wiring

- EX [Symbol] Existing item to remain.
- R [Symbol] Remove item and associated wiring.
- RS [Symbol] Remove item and save for reuse.
- RL [Symbol] Relocated item.
- [Symbol] Smoke Detector
- [Symbol] Program Clock

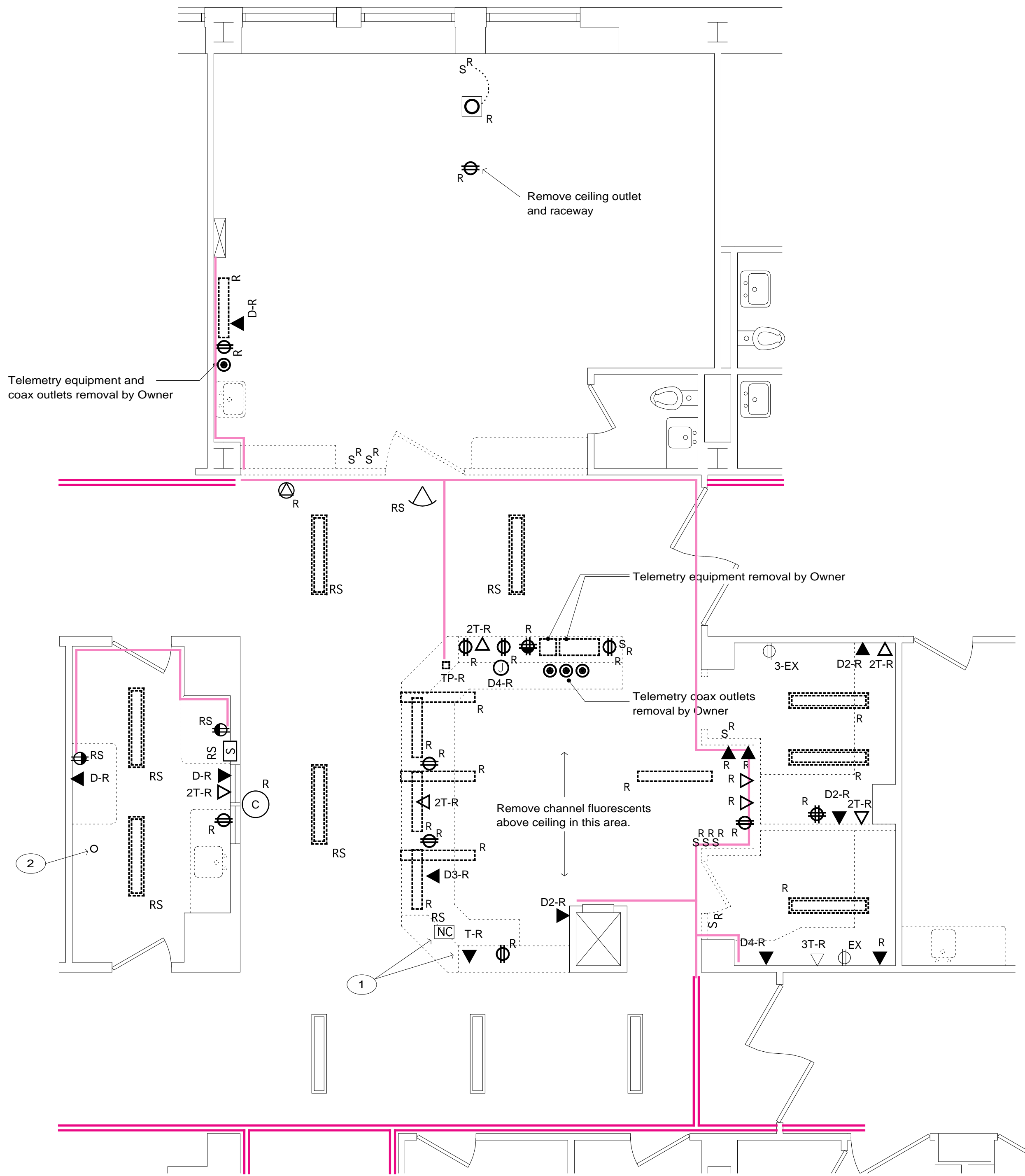


Notes:

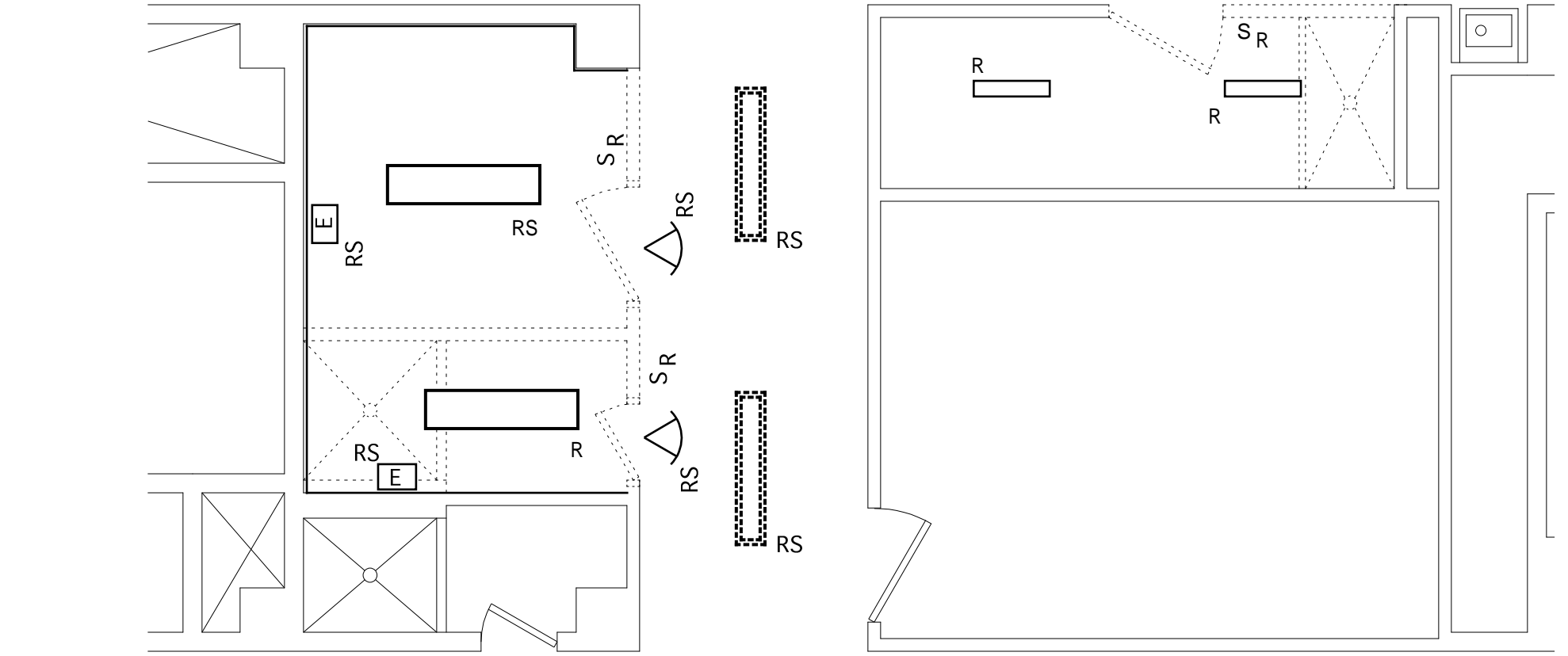
- 1 Relocate nurse call master station and master telephone console to Room 507 for duration of nursing station renovation. At completion of Phase 5 relocate to original location.
- 2 Remove motion switch. At completion of Phase 5 relocate to original location.

Removals General Note:

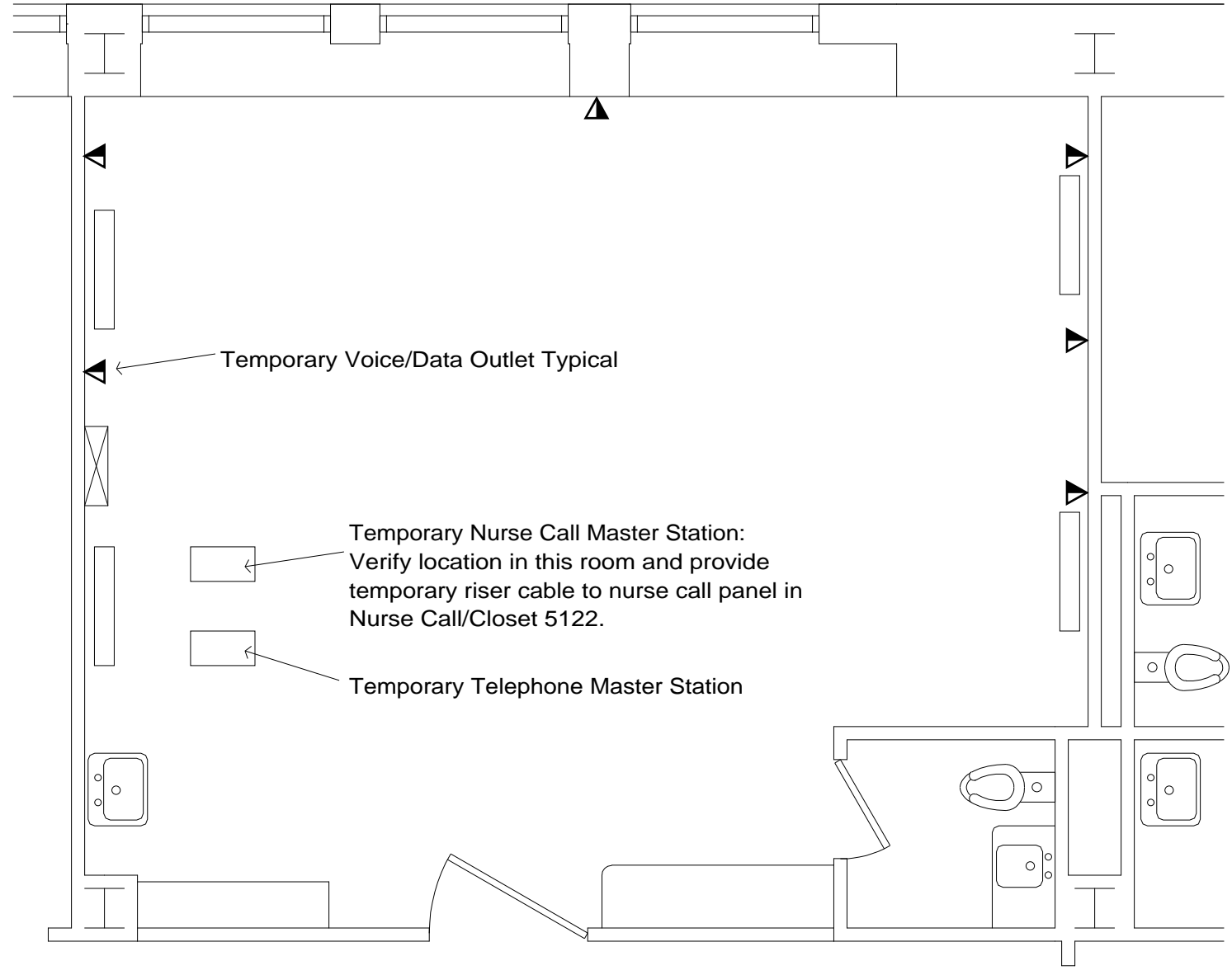
Items not shown shall remain in use.
 Contractor shall verify and maintain existing circuit continuity.
 Contractor shall verify existing circuit configuration.
 All work shall conform to current N.E.C.



1 Nursing Station Electrical Removes
 1/4" = 1' - 0"

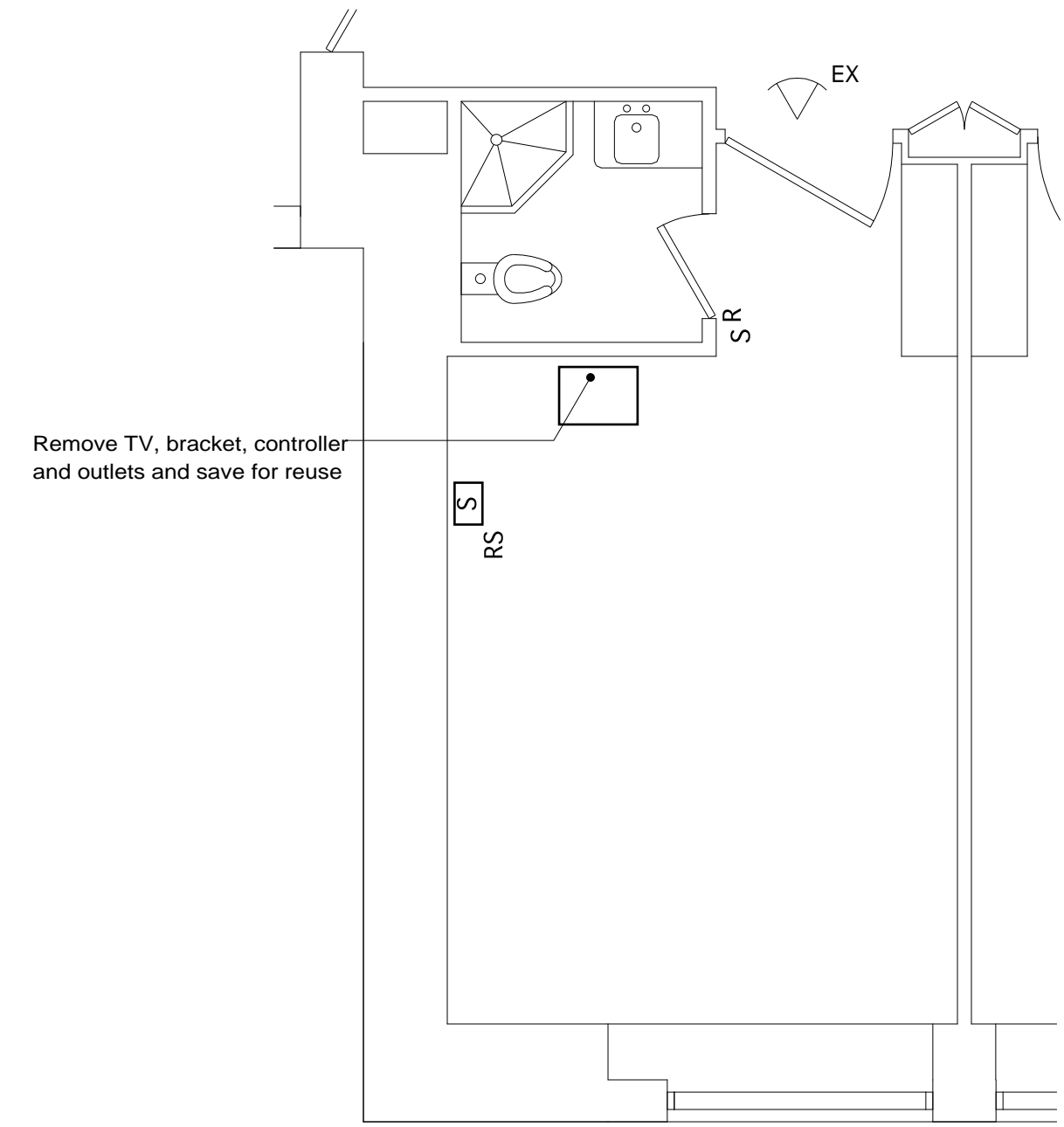


4 West Areas Electrical Removes Plan
 1/4" = 1' - 0"

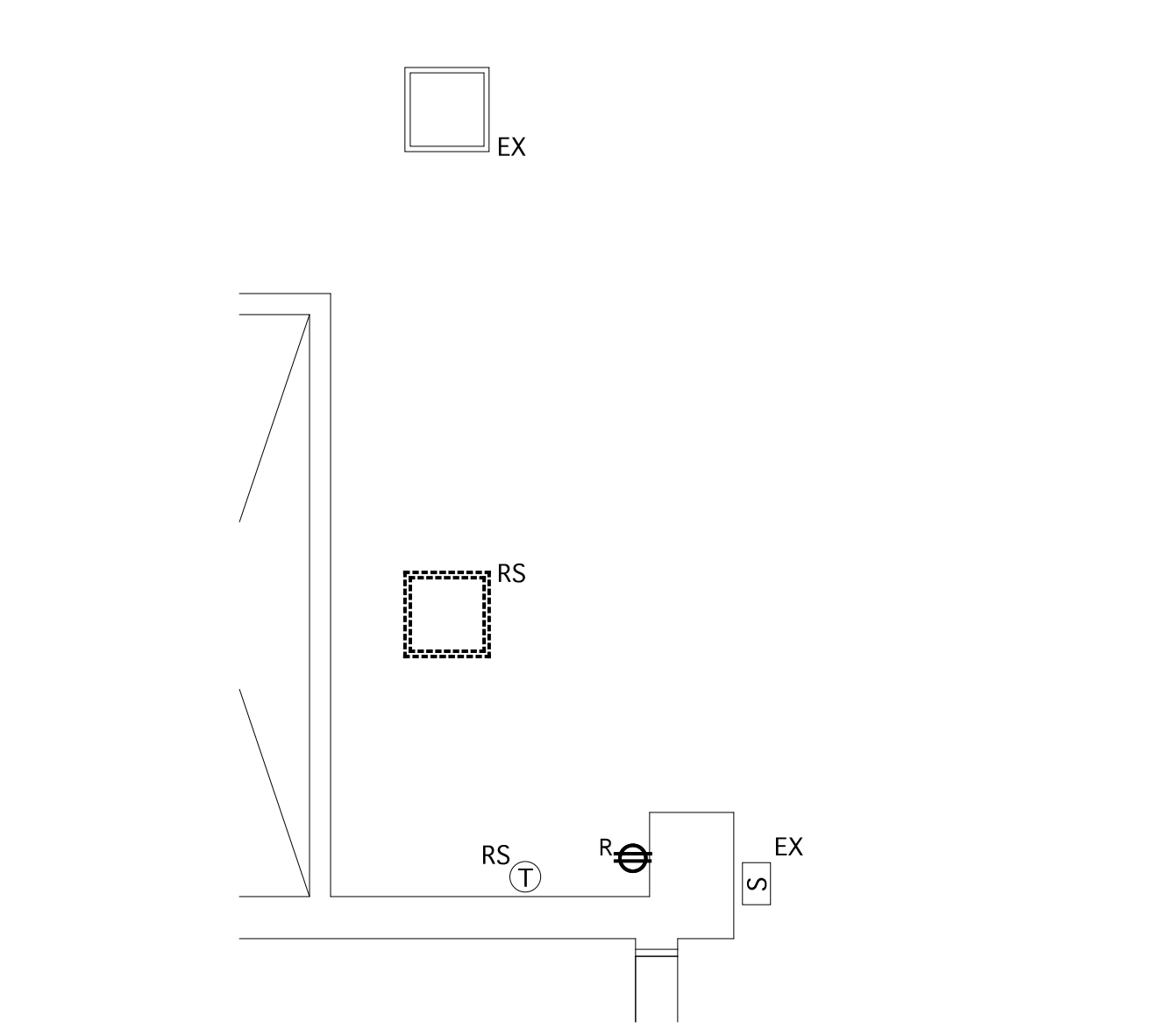


2 Temporary Nursing Station Electrical Plan
 1/4" = 1' - 0"

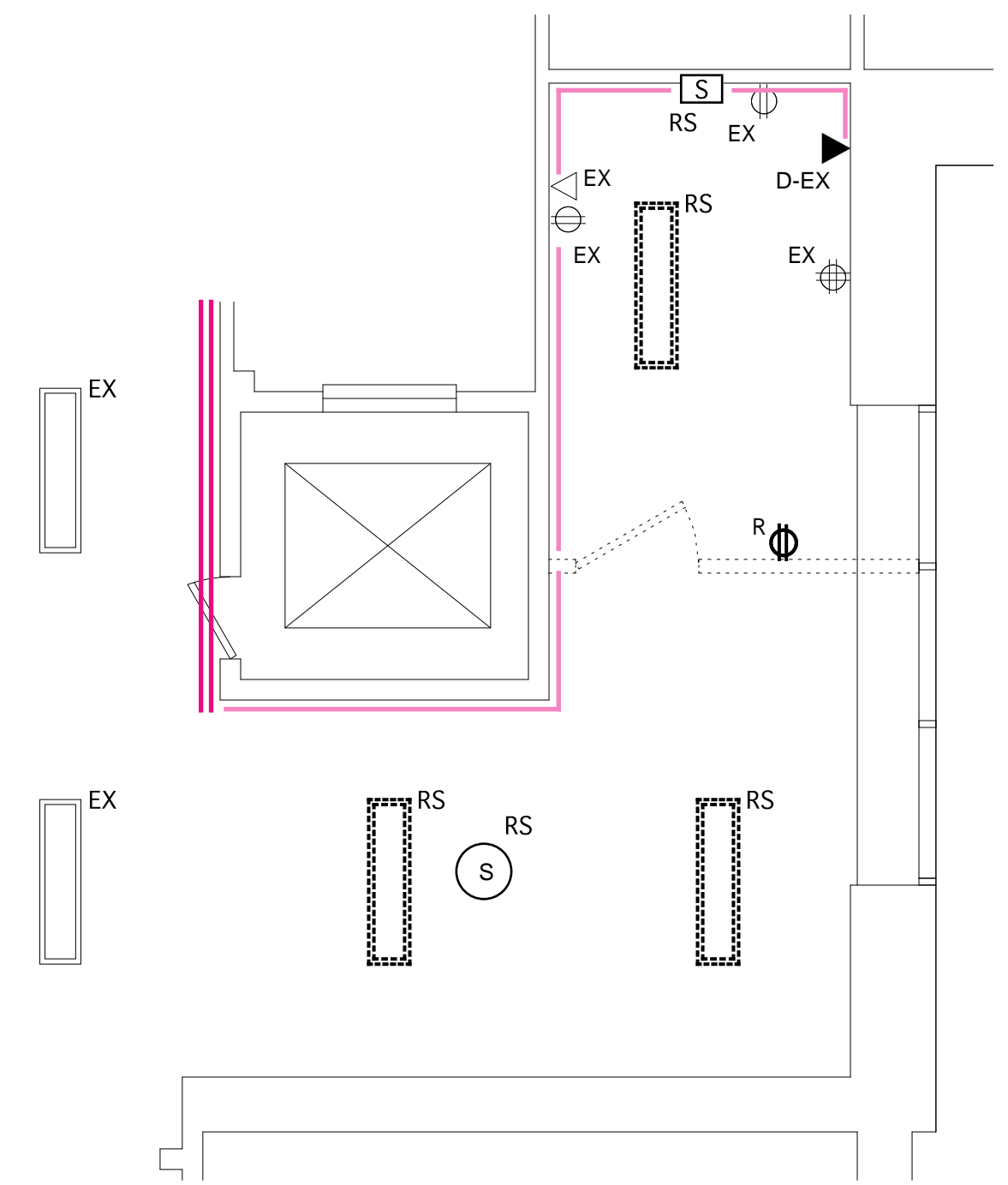
Note: All devices shown on this plan shall be provided during Phase 12 for use in the temporary nursing station and shall be removed during Phase 14. Any items to be cut over to activate the new nursing station at the conclusion of Phase 13 shall be done so during a weekend as directed by the Owner.



5 Room 517 Electrical Removes Plan
 1/4" = 1' - 0"



3 Staff Locker Room Electrical Removes Plan
 1/4" = 1' - 0"



6 Staff Lounge Electrical Removes Plan
 1/4" = 1' - 0"

Richards Wing
 Fifth Floor
 Renovations

Maine Medical Center
 Portland, Maine 04102

Architect
Winton Scott Architects
 Portland, Maine

Mechanical Engineering
Mechanical Systems Engineers
 Yarmouth, Maine

Electrical Engineering
Bartlett Design
 Bath, Maine

Electrical Removes Plans
E 2