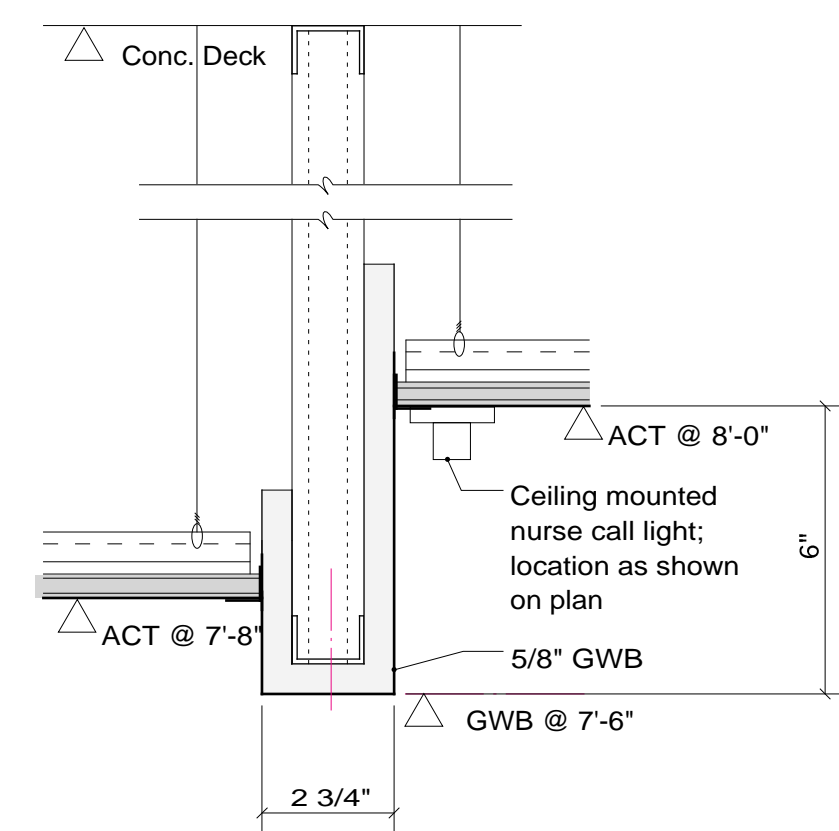
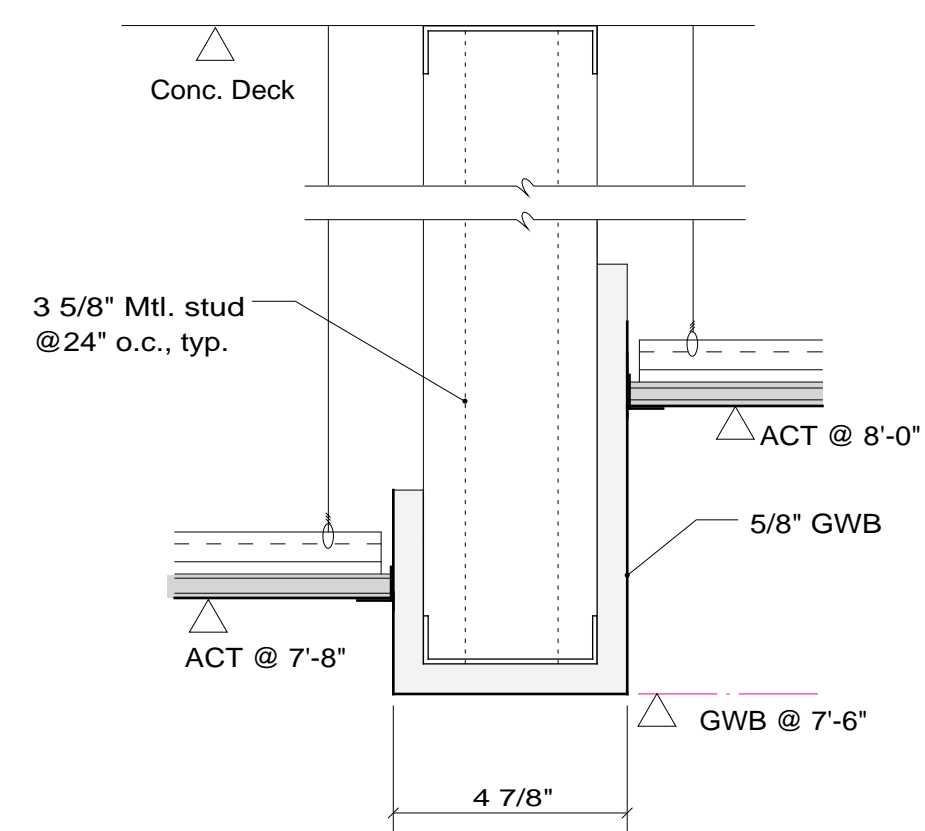


A Reflected Ceiling Plan
1/8" = 1'-0"



1 Soffit Detail
3" = 1'-0"



2 Soffit Detail
3" = 1'-0"

Ceiling Types Key

- (A) Proposed 2x2 ACT A at 8'-0" AFF
- (C) Proposed 2x2 ACT C at 8'-0" AFF
- (D) Proposed GWB at 7'-6" AFF
- (E) Proposed 2x2 ACT A at 7'-8" AFF
- (F) Proposed GWB overlay on exist. plaster

Legend

- Ceiling mounted nurse call lamp
- Proposed 1x4 recessed fluorescent light fixture
- Proposed 2x2 recessed fluorescent light fixtures
- Proposed recessed linear light fixture
- Recessed downlight
- Cubicle track
- Sprinkler Head N.I.C.
- Return grille by Mechanical
- Supply diffuser by Mechanical
- Existing Sprinkler Head

Richards Wing
Fifth Floor
Renovations

Maine Medical Center
Portland, Maine 04102

Architect
Winton Scott Architects, PA
Portland, Maine

Mechanical Engineering
Mechanical Systems Engineers
Yarmouth, Maine

Electrical Engineering
Bartlett Design
Bath, Maine

Reflected Ceiling Plan
A 7

Scale: As Shown
April 10, 2002