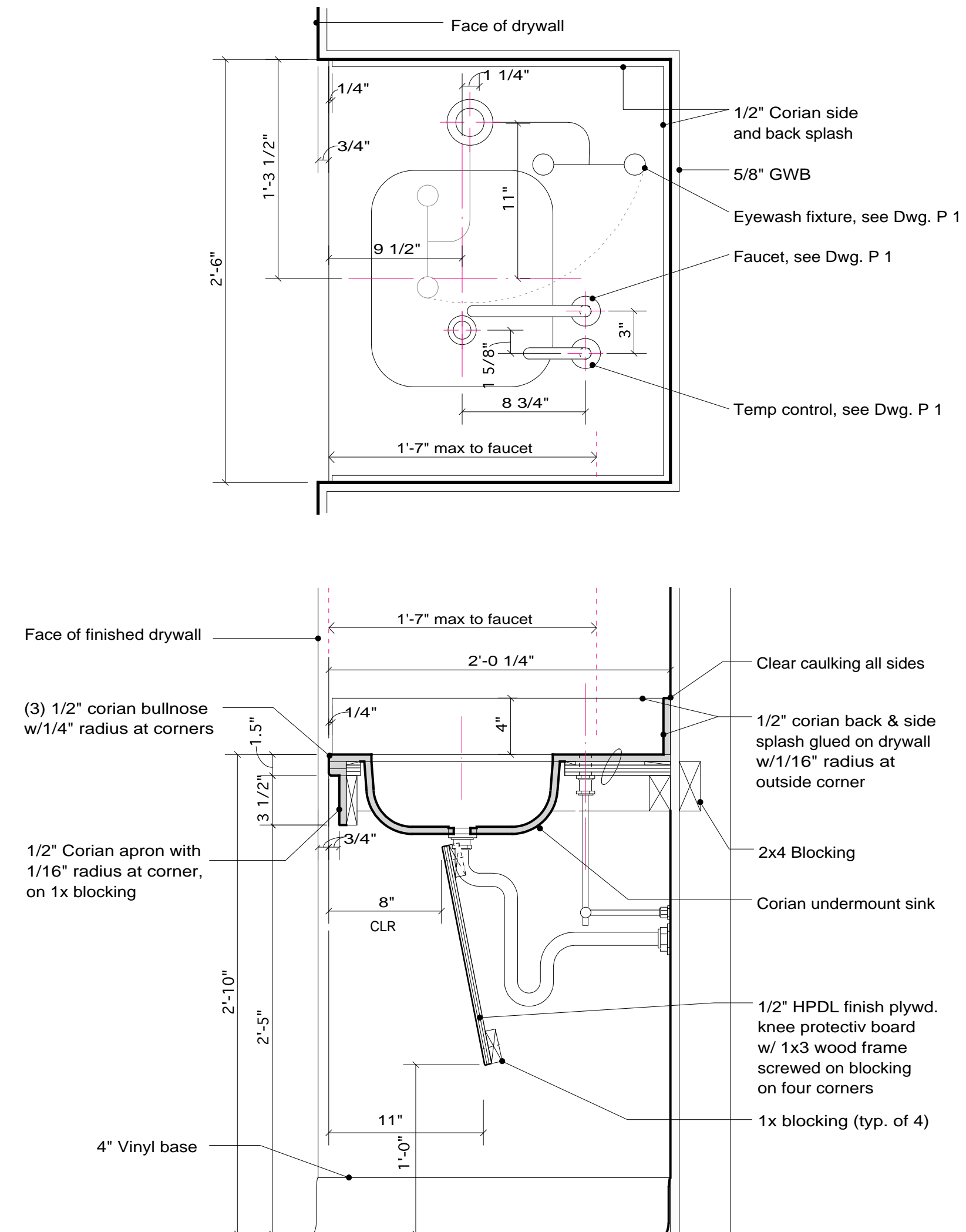
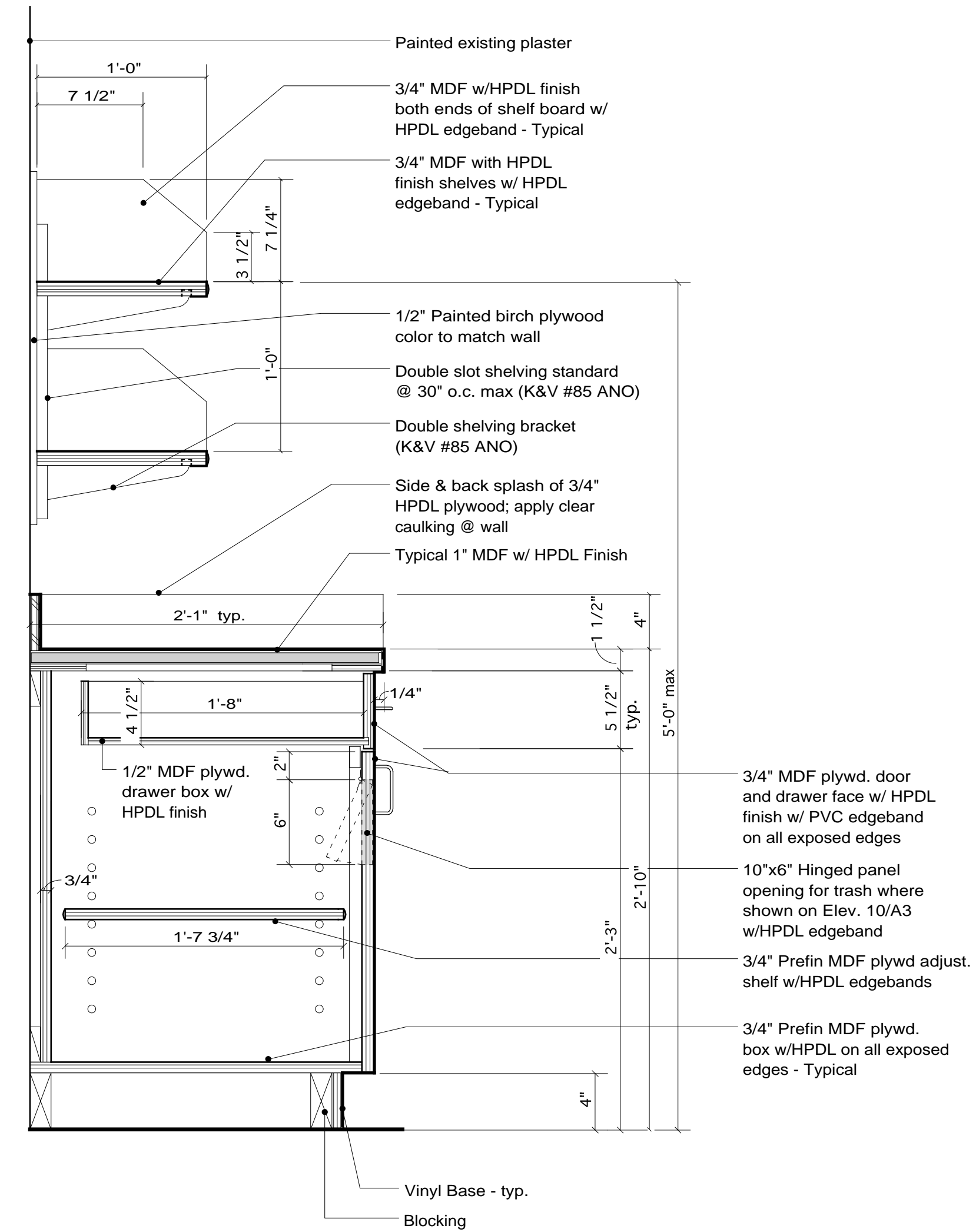


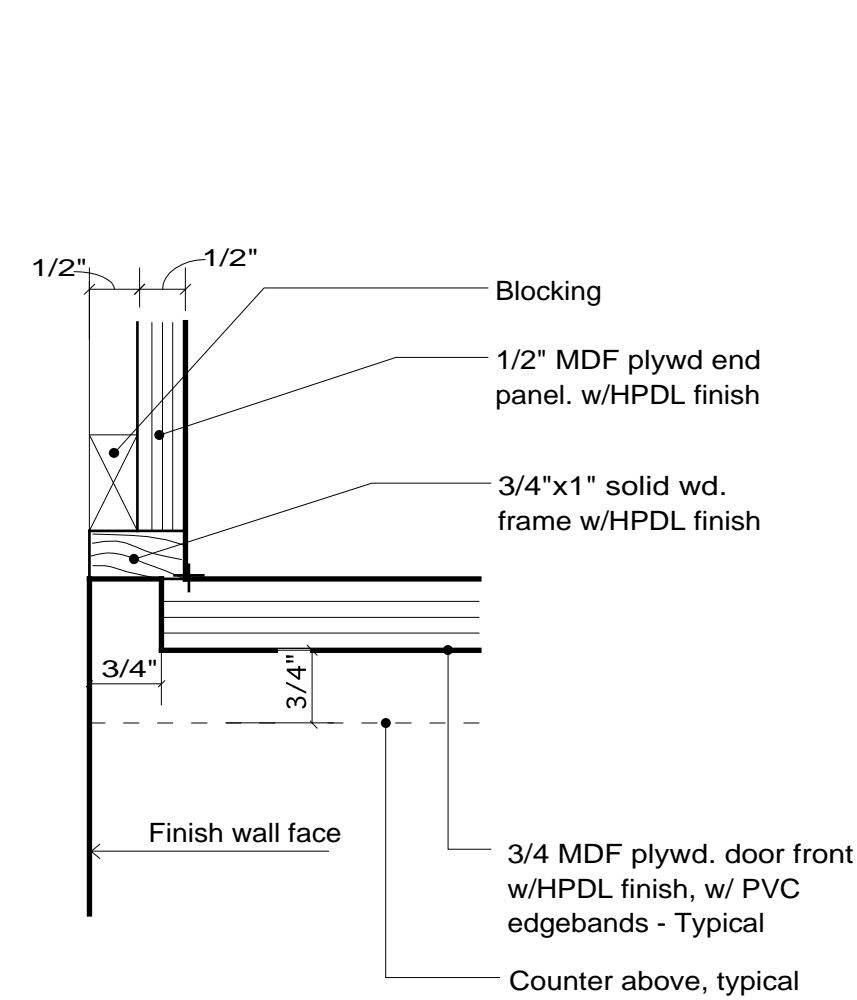
1 Coat Hooks & Shelf
1 1/2" = 1'-0"



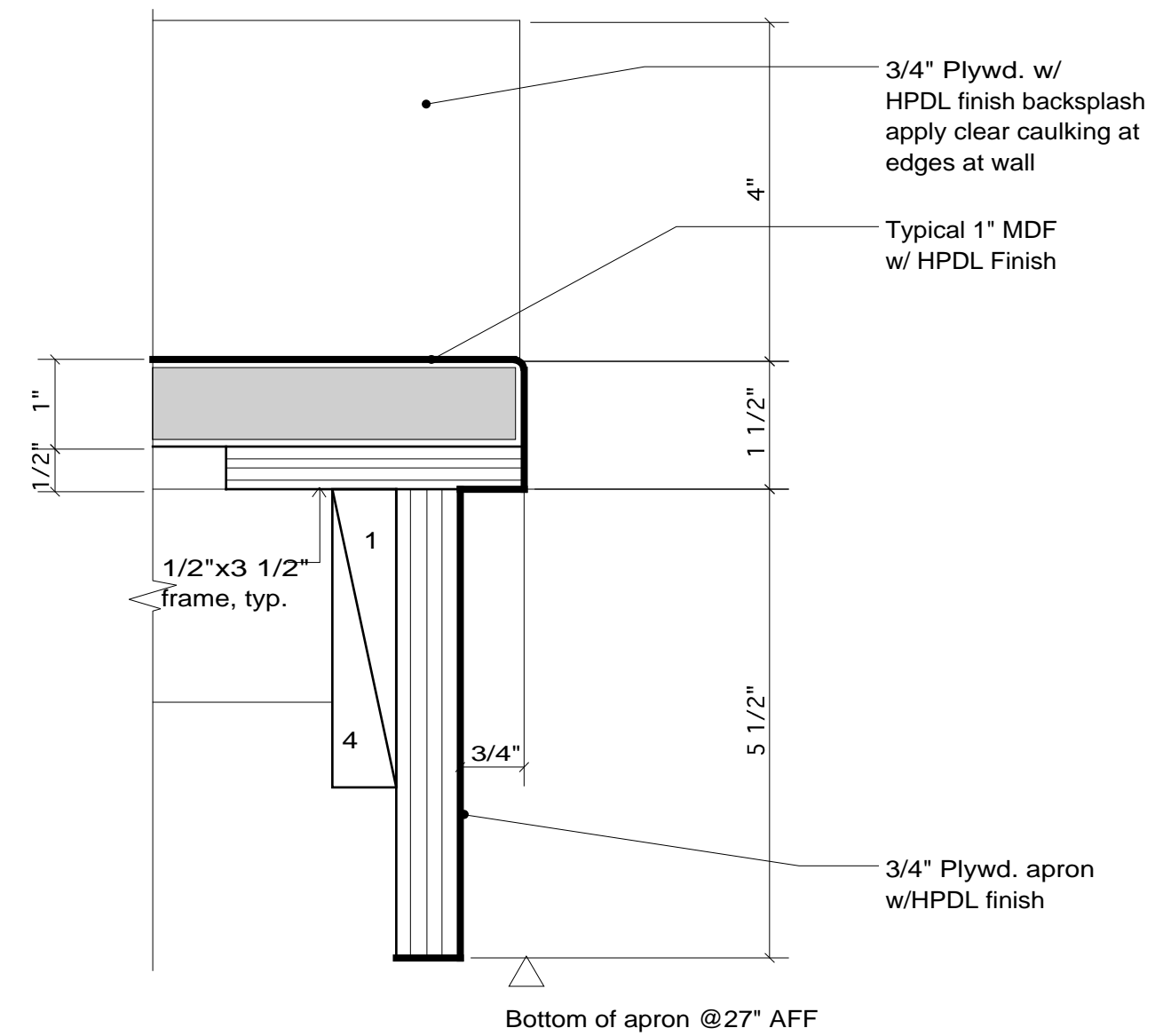
2 Hand/Eye Wash Counter
1 1/2" = 1'-0"



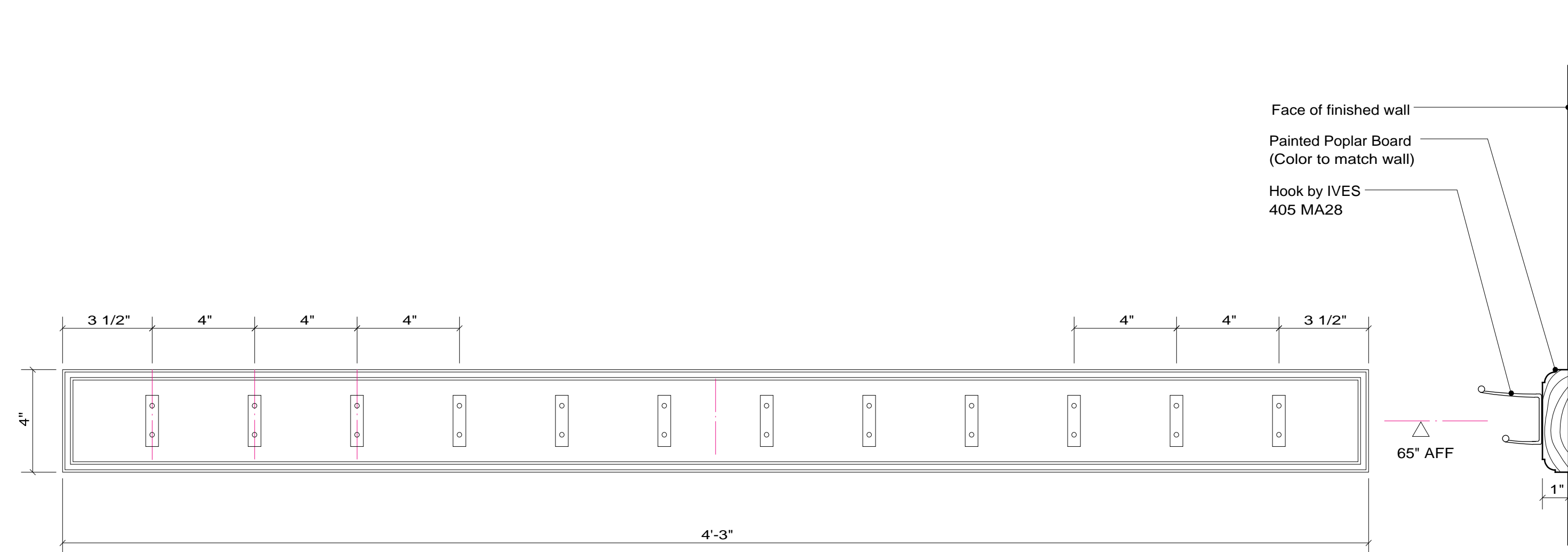
3 Base Cabinet w/ Wall Shelves
1 1/2" = 1'-0"



A Casework Plan Detail at Wall
6" = 1'-0"



B Detail @ Counter w/ knee space
6" = 1'-0"



C Coat Hooks Detail (Wall mounted)
3" = 1'-0"

Richards Wing
Fifth Floor
Renovations

Maine Medical Center
Portland, Maine 04102

Architect
Winton Scott Architects, PA
Portland, Maine

Mechanical Engineering
Mechanical Systems Engineers
Yarmouth, Maine

Electrical Engineering
Bartlett Design
Bath, Maine

Architectural Woodwork

A 5

Scale: AS NOTED
April 10, 2002