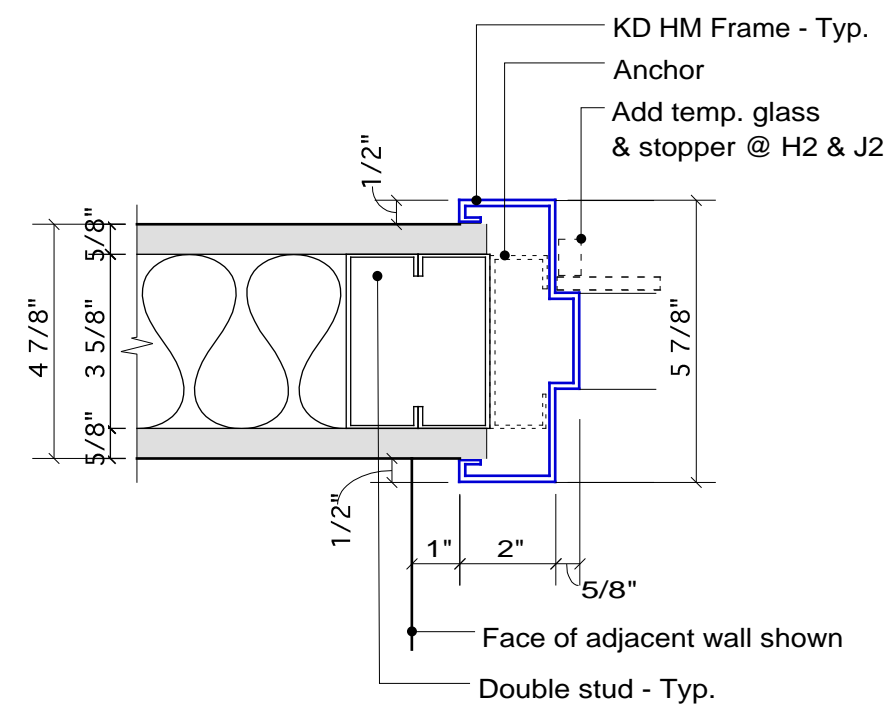


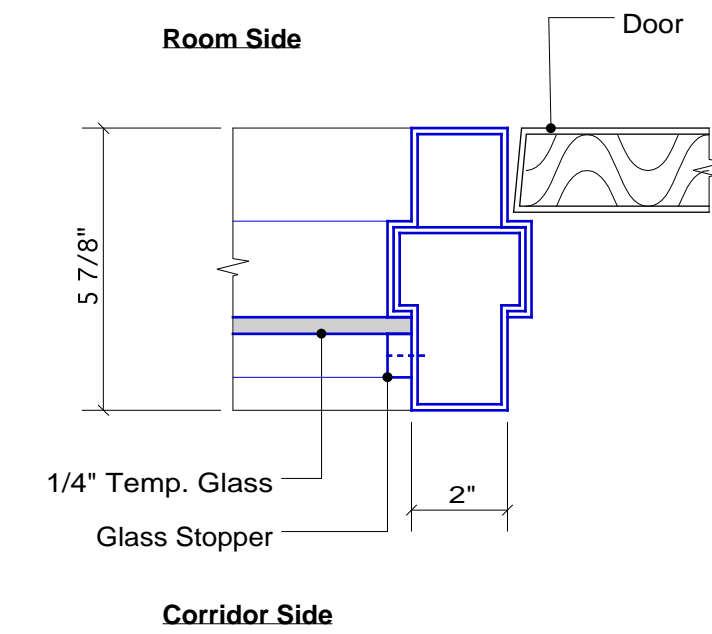
Head and Jamb Details

3"=1'-0"

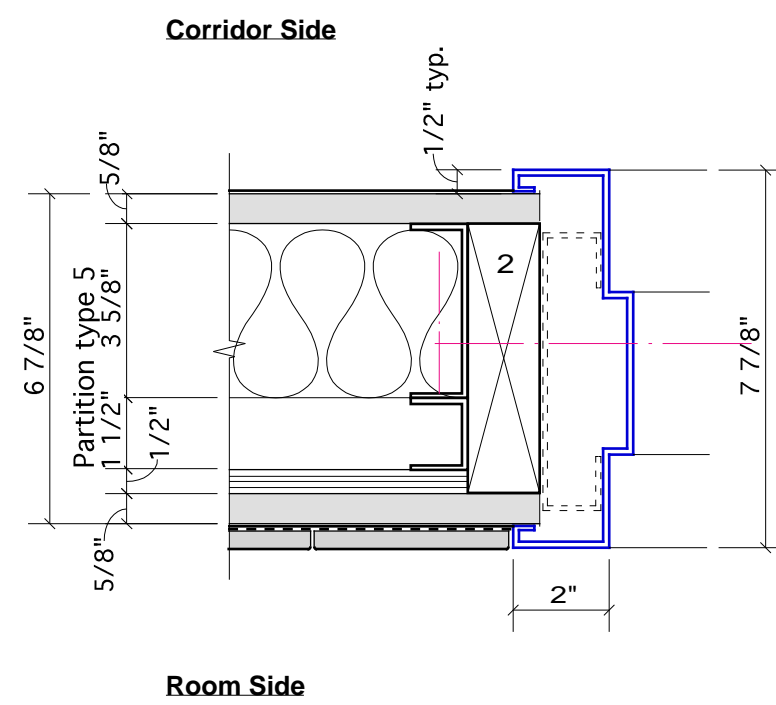


H1 J1
H2 J2

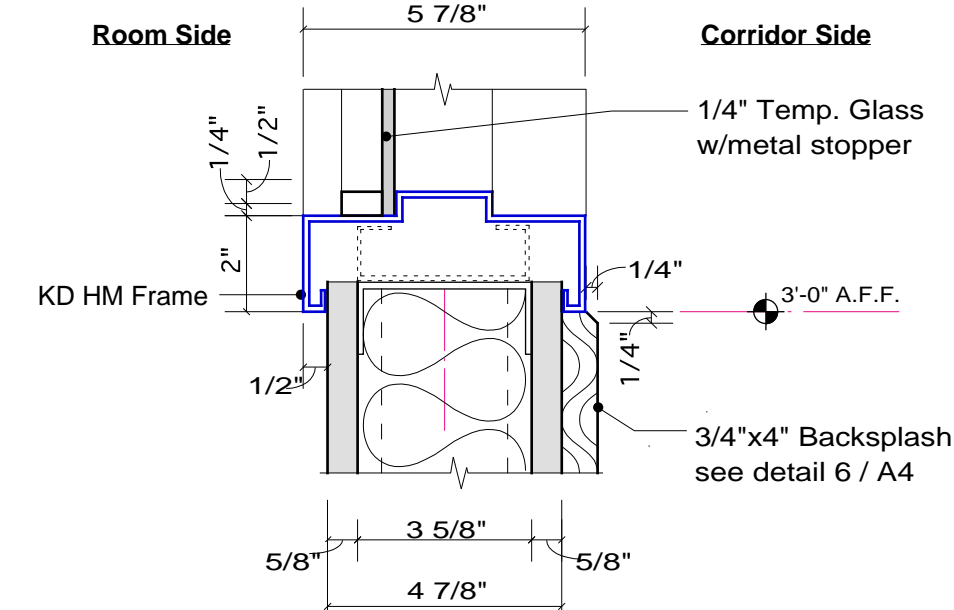
Add tempered glass and stopper



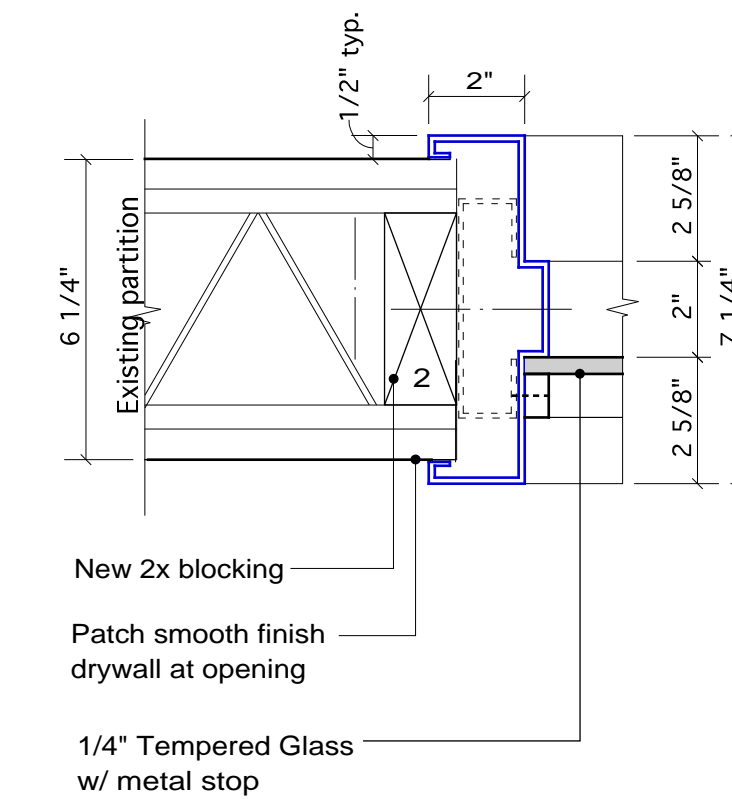
J3 At Door with Sidelight



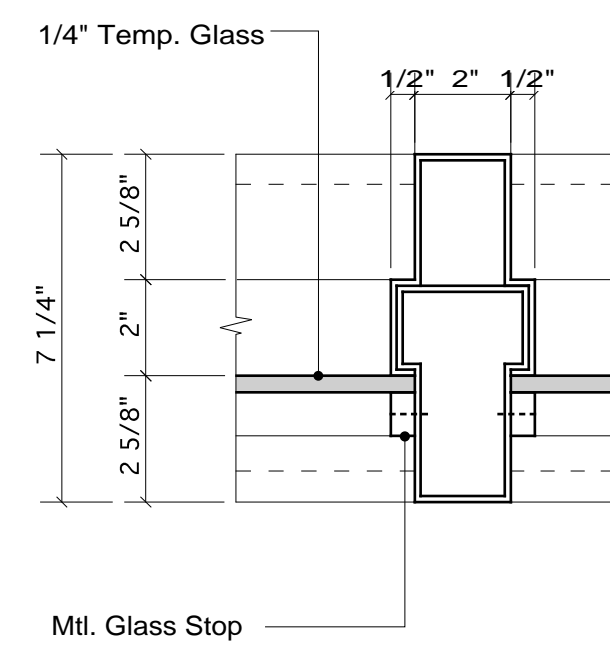
H3 J4



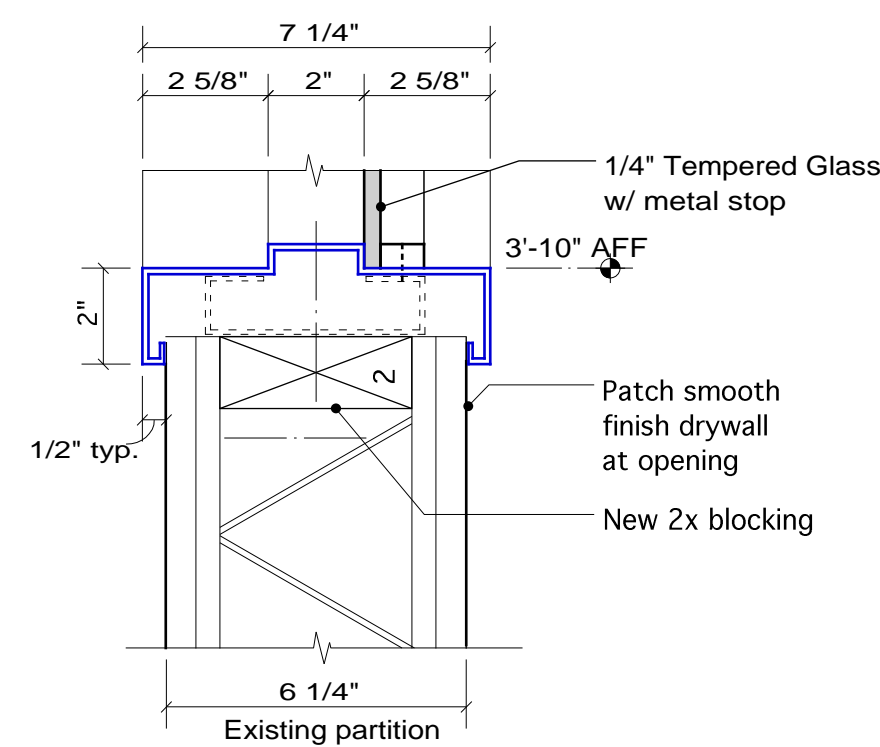
S1



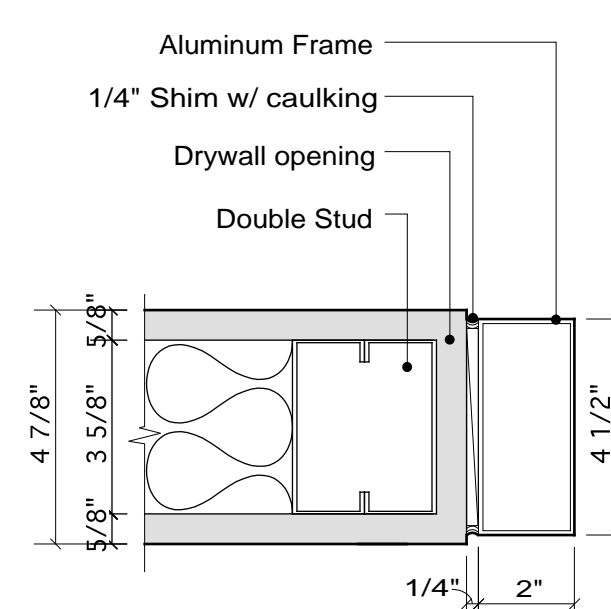
H4 J5



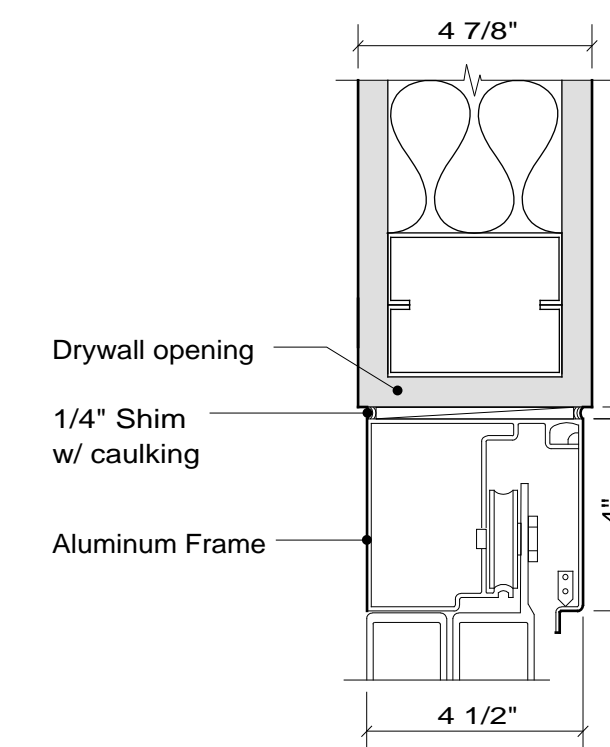
J6



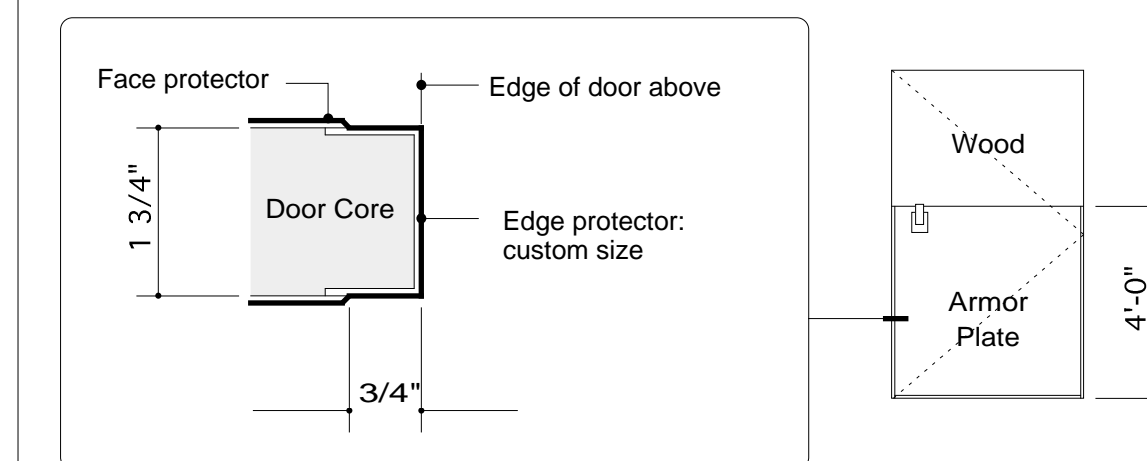
S2



J7



H5



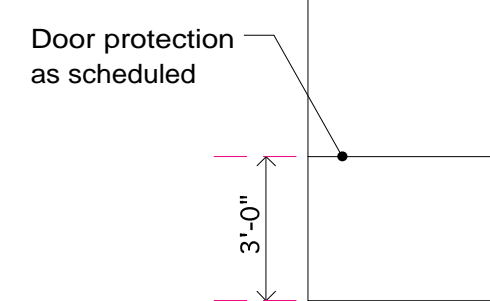
Door Overlay Plan Detail

DP-1 and DP-2 Thus

D Door Protection Overlay

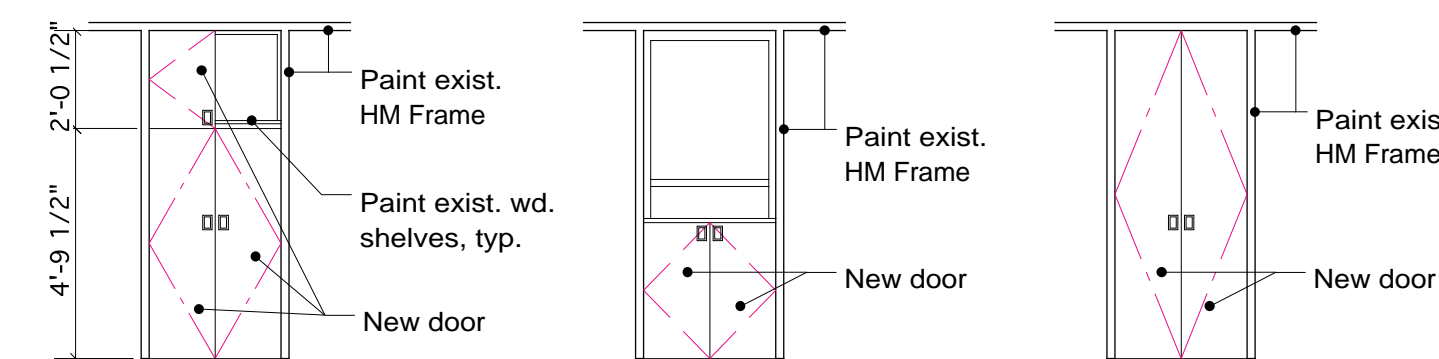
Door Types

1/4" = 1'-0"



D1

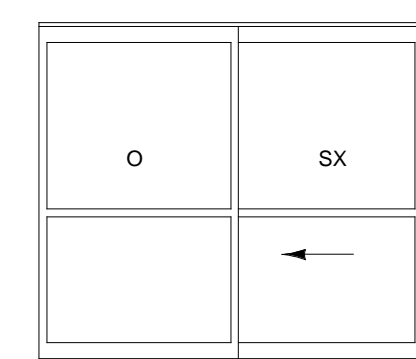
By Alternate #2 only



D2

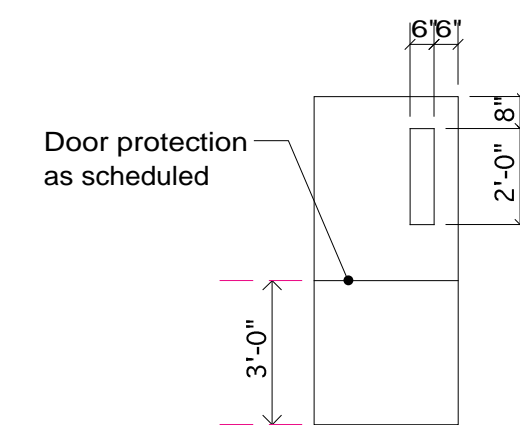
D3

D4



D5

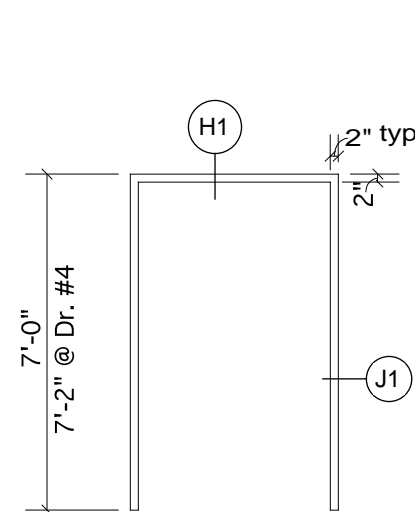
Aluminum Frame Stanley 7200 ICU Series, Trackless



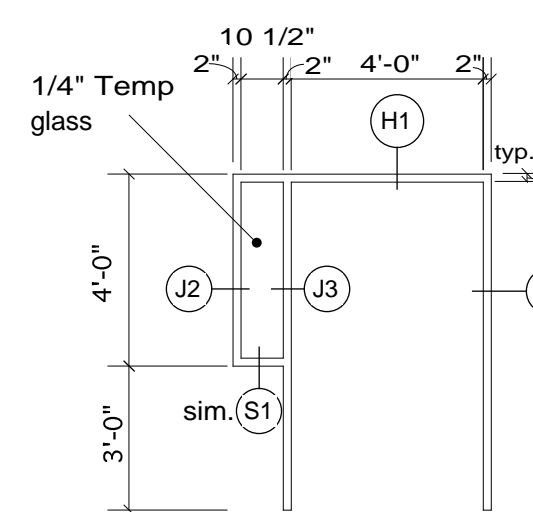
D6

Frame Types

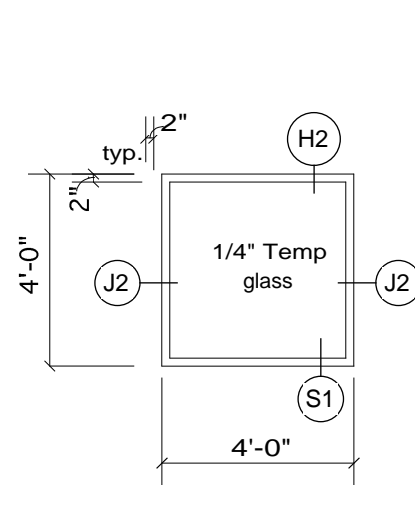
1/4" = 1'-0"



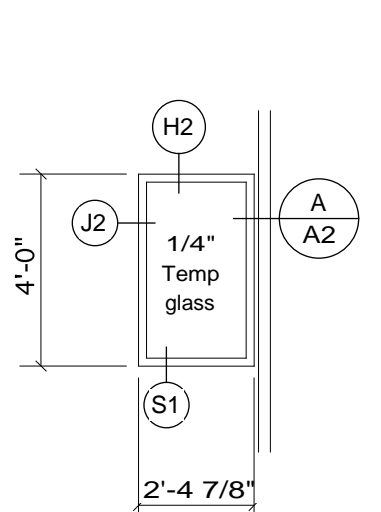
F1 Knockdown HM Frame



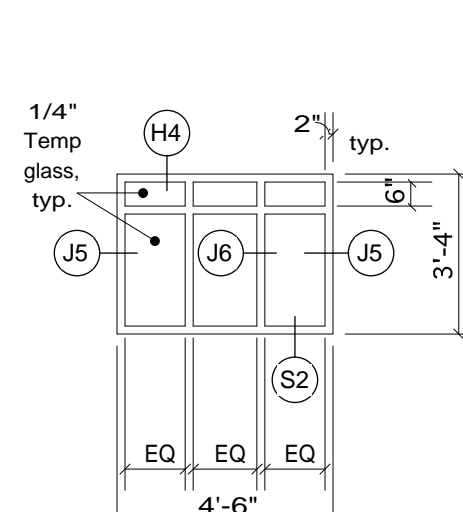
F2 Welded HM Frame



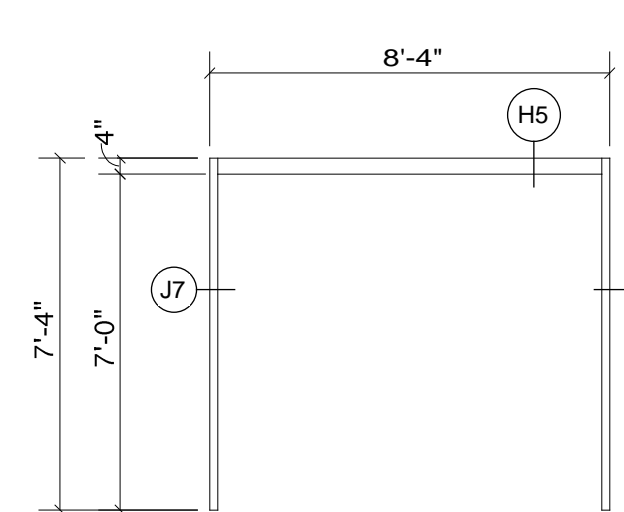
F3 Knockdown HM Frame



F4 Knockdown HM Frame



F5 Welded HM Frame



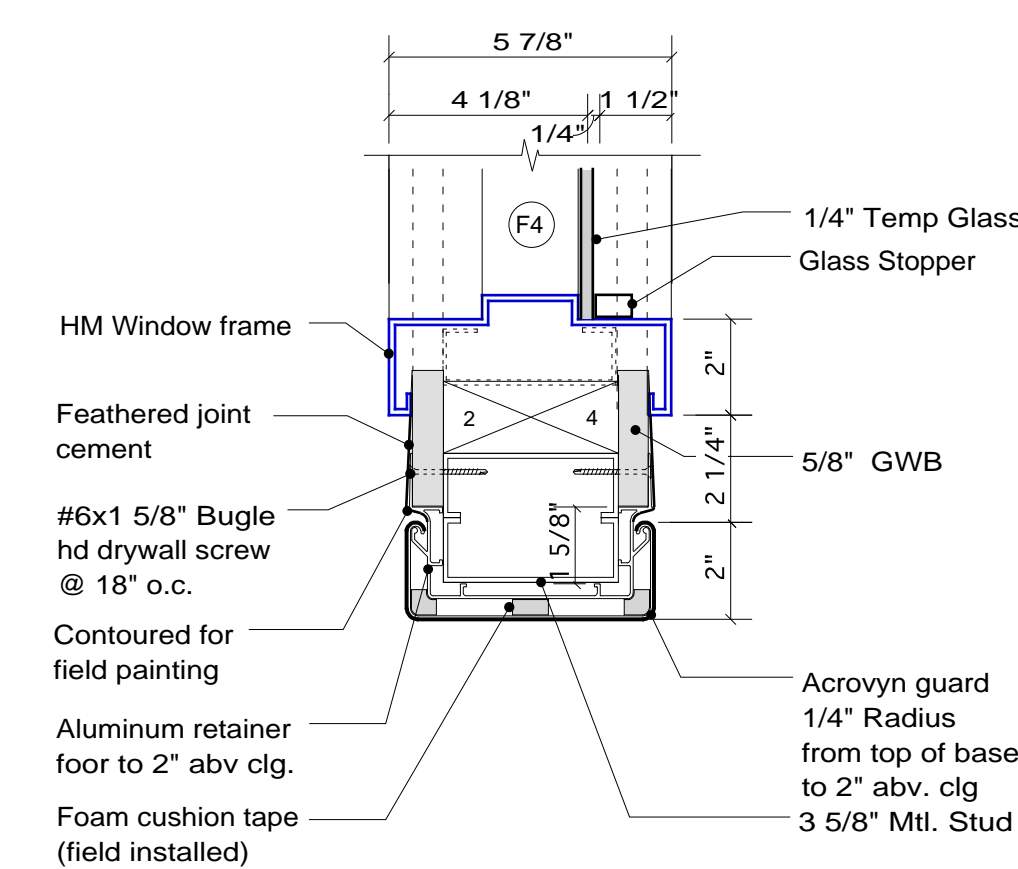
F6 Aluminum Frame Stanley 7200 ICU Series, Trackless

A Plan Detail at Post

3" = 1'-0"

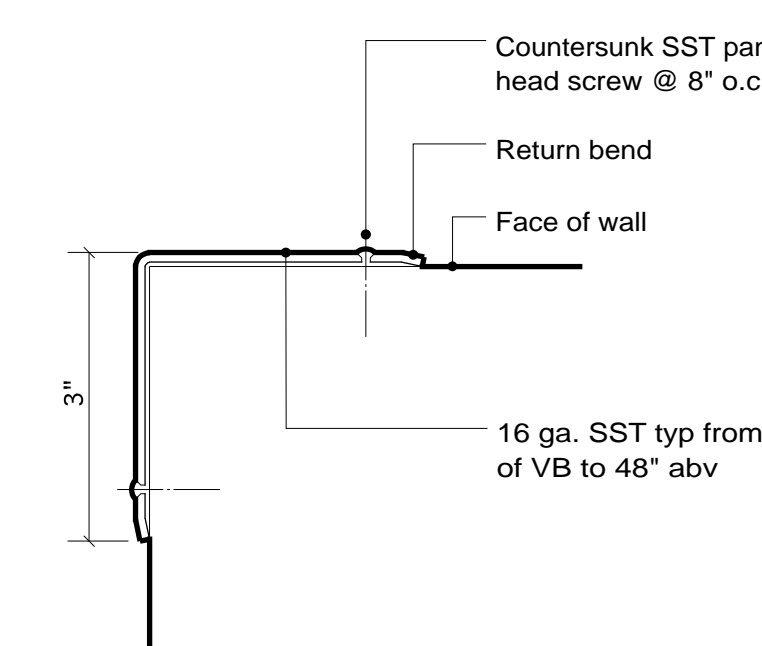
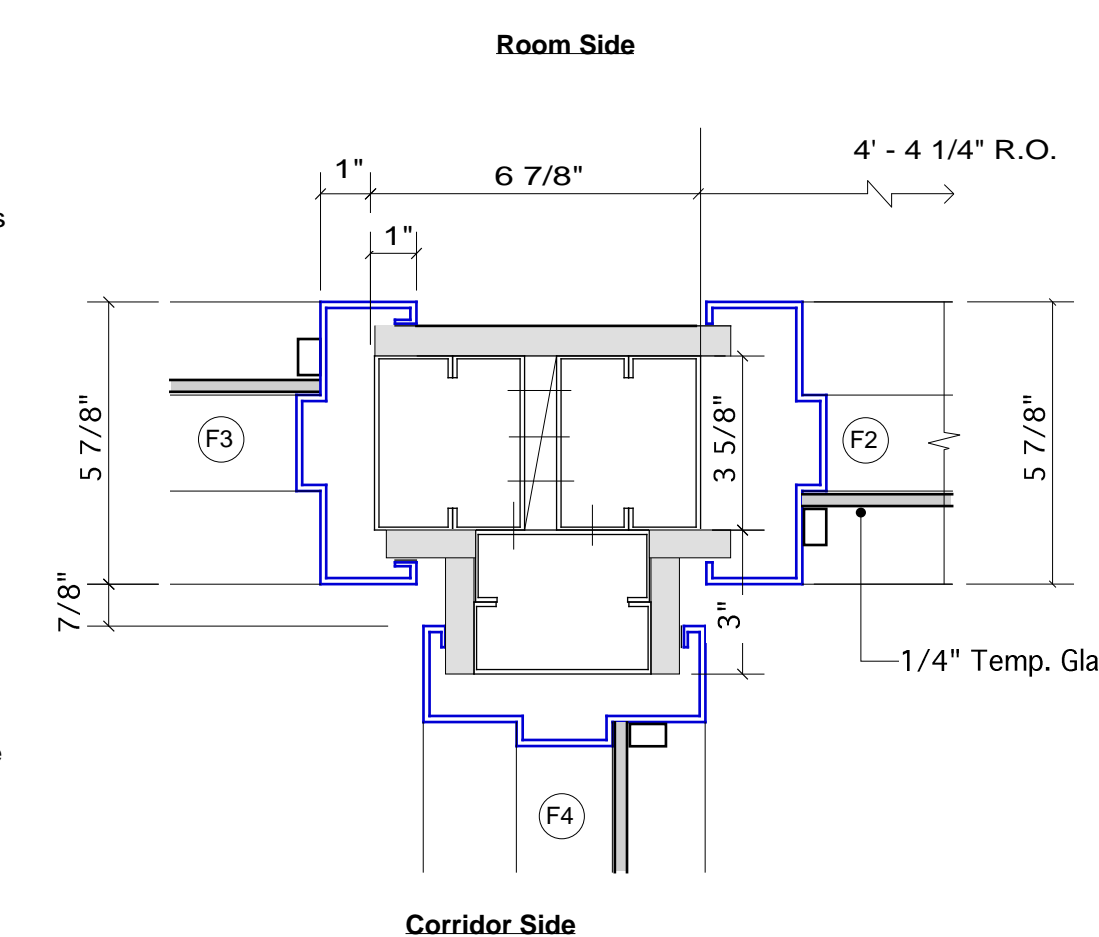
C Typical SST CG Detail

6" = 1'-0"



B Plan Detail at Post

3" = 1'-0"



Richards Wing
Fifth Floor

Renovations

Maine Medical Center
Portland, Maine 04102

Architect
Winton Scott Architects, PA
Portland, Maine

Mechanical Engineering
Mechanical Systems
Engineers
Yarmouth, Maine

Electrical Engineering
Bartlett Design
Bath, Maine

Door & Frame
Details

A 10

Scale: AS NOTED

April 10, 2002