

**REFLECTED CEILING NOTES**

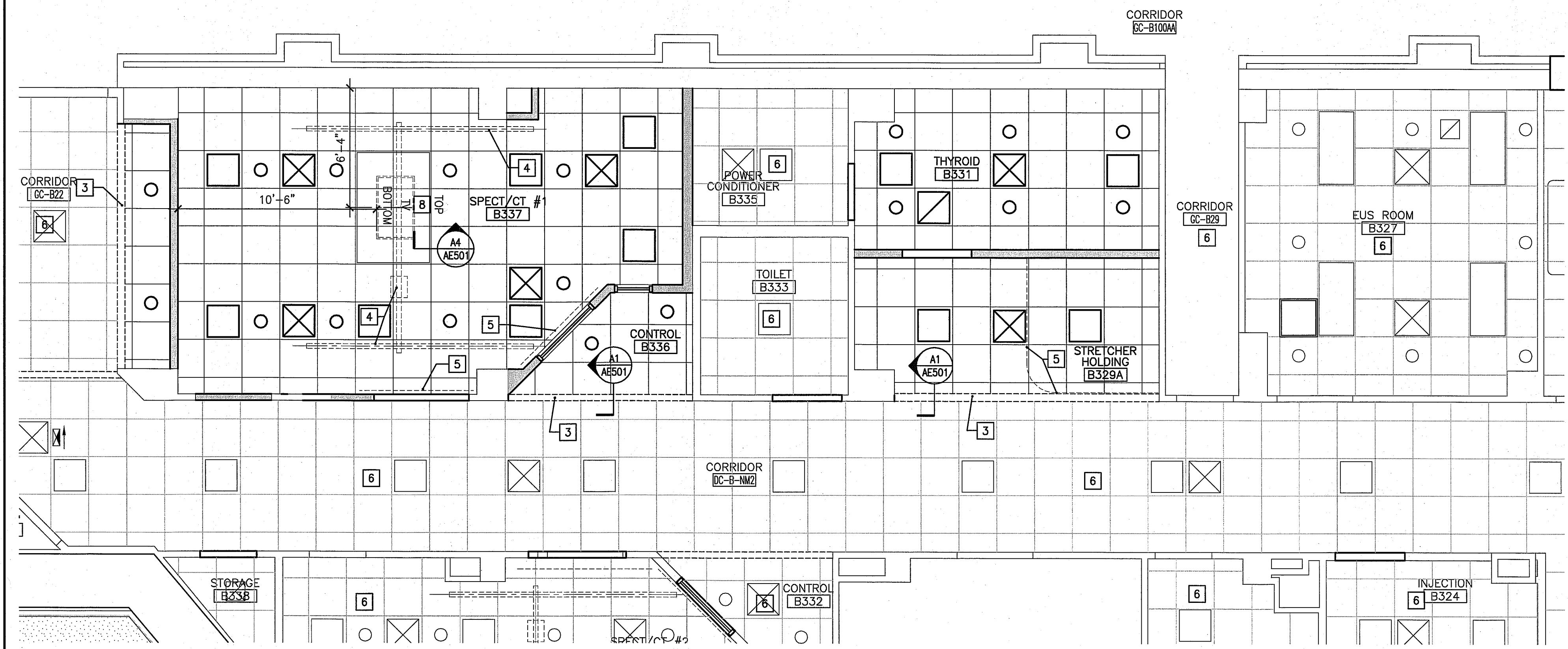
1. ALIGN CEILING ITEMS AS SHOWN, WITH COMMON CENTERLINES, TYPICALLY. CENTER ITEMS IN CEILINGS, OR IN AREAS UNLESS INDICATED OTHERWISE.
2. MATCH EXISTING CEILING HEIGHTS.
3. EXCEPT WHERE INDICATED, CENTER CEILING GRIDS IN ROOMS. USE HALF TILES OR GREATER @ PERIMETERS AS POSSIBLE.
4. PROVIDE ACCESS PANELS AS REQUIRED IN GWB CEILINGS FOR ACCESS TO MECHANICAL VALVES/ CONTROLS. REFERENCE MECHANICAL.

**KEYED NOTES:**

- 1 EXISTING ACT CEILING TO BE REMOVED AND REINSTALLED FOLLOWING MECHANICAL WORK. REPAIR AND/OR REPLACE ANY GRID OR TILES AS NECESSARY.
- 2 MODIFY EXISTING ACT CEILING AS REQUIRED TO ACCOMMODATE PROPOSED WALL LAYOUT.
- 3 BOTTOM OF SOFFIT 2" BELOW LOWEST ADJACENT CEILING.
- 4 CEILING MOUNTED PATIENT LIFT SYSTEM
- 5 CEILING MOUNTED CURTAIN TRACK AND CURTAIN
- 6 EXISTING CEILING TO REMAIN.
- 7 RELOCATED CEILING PANEL WITH MED GAS AND POWER.
- 8 OWNER PROVIDED TV MOUNTED HORIZONTALLY ON POLE MOUNTED TO ROOF DECK ABOVE. CONTRACTOR INSTALLED.

**SYMBOL LEGEND**

- 2x2 SUSPENDED CEILING PANEL AND GRID ASSEMBLY.
- 2x4 SUSPENDED CEILING PANEL AND GRID ASSEMBLY.
- GWB CEILING.
- 2x4 LAY-IN LIGHT FIXTURE.
- 1x4 PENDANT LIGHT FIXTURE.
- DOWN LIGHT.
- CEILING MOUNTED EXIT LIGHT.
- RETURN AIR GRILLE.
- SUPPLY AIR GRILLE.
- EXHAUST AIR GRILLE.



**G6 REFLECTED CEILING PLAN**

1/4"=1'-0"

**FLOOR PLAN NOTES:**

1. SEE GENERAL NOTES ON G1002.
2. FURNITURE DASHED IN BY OTHERS IS INDICATED FOR COORDINATION. PROVIDE IN WALL BLOCKING FOR ALL WALL MOUNTED CASEWORK, FURNITURE, EQUIPMENT AND ANY OTHER .NIC ITEM.
3. PARTITION TYPE IS TYPICAL UNLESS NOTED OTHERWISE.
4. REFER TO DETAILS AND/OR ENLARGED PLANS FOR ADDITIONAL INFORMATION.
5. AT ALL REMOVED ITEMS, PATCH WALL SURFACE TO MATCH ADJACENT MATERIAL, TYPICAL.
6. EXTERIOR DIMENSIONS ARE FROM FACE OF STUD TO FACE OF STUD. UNLESS NOTED OTHERWISE.
7. CORNER GUARDS UP TO 48" A.F.F. FROM TOP OF BASE, TYPICAL.
8. ALL DASHED KEYED NOTES REFER TO ITEMS ON GE SITE PLANNING GUIDE DRAWINGS.

**KEYED NOTES:**

- 1 OWNER PROVIDED FURNITURE, CONTRACTOR TO PROVIDE BLACKING AND COORDINATE POWER AND DATA OUTLETS.
- 2 EYE WASH SIGNAGE

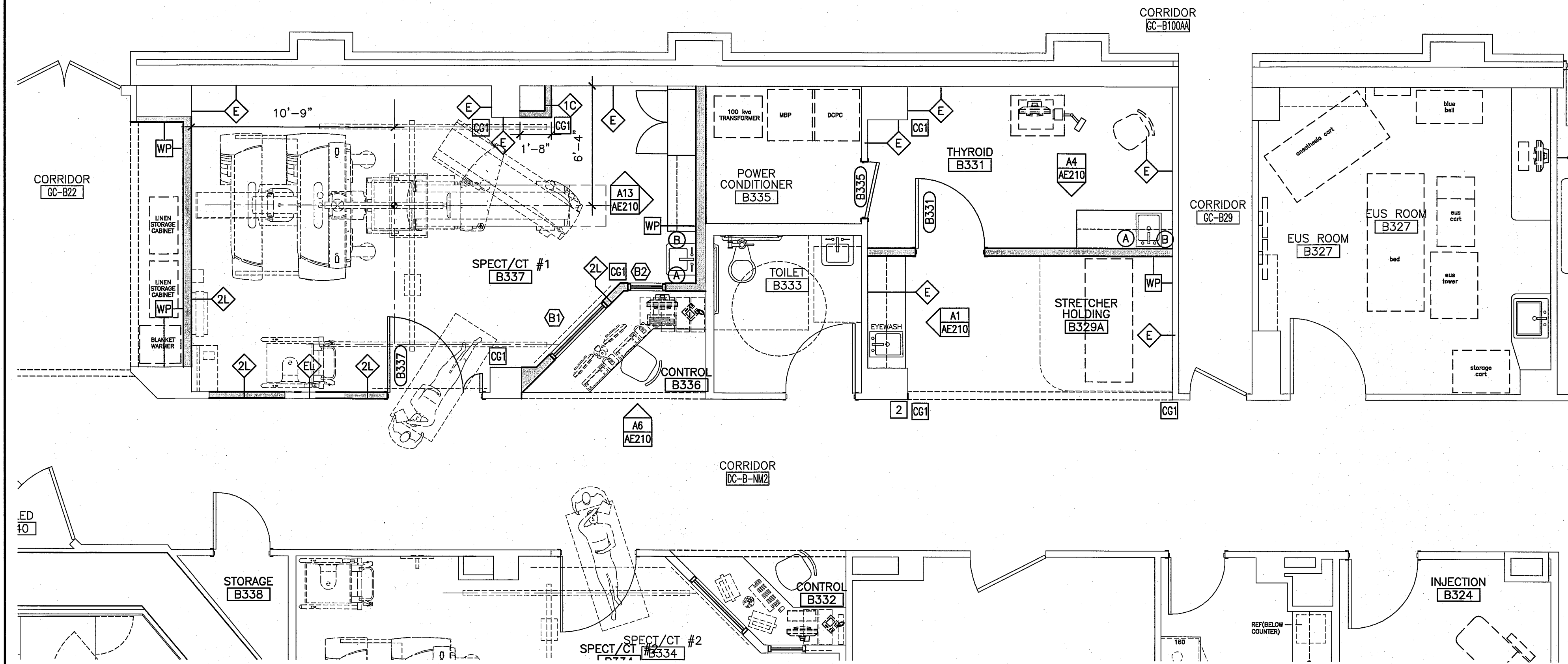
**WALL LEGEND**

- PARTITION TYPE, SEE G1002
- INDICATES 1-HOUR RATED PARTITION/ WALL
- INDICATES 2-HOUR RATED PARTITION/ WALL
- CORNER GUARD-1: 90 DEGREE-UP TO 48" FROM TOP OF BASE
- CORNER GUARD-2: END WALL PROTECTOR-UP TO 48" FROM TOP OF BASE
- WALL PROTECTION-UP TO 48" AFF
- WALL PROTECTION-UP TO BOTTOM OF CHAIR RAIL (CR2), SEE A14/AE510
- CHAIR RAIL, SEE DETAIL D14/AE510
- FIRE EXTINGUISHER CABINET AND FIRE EXTINGUISHER

**ACCESSORY SCHEDULE**

TAG	DESCRIPTION	
(A)	SOAP DISPENSER	O/C
(B)	PAPER TOWEL DISPENSER	O/C
(C)	MIRROR 18" X 30"	C/C
(D)	TOILET TISSUE DISPENSER	O/C
(E)	DOUBLE ROBE/COAT HOOK (MOUNTED ON WALL)	C/C

C/C - CONTRACTOR FURNISHED/CONTRACTOR INSTALLED  
 O/C - OWNER FURNISHED/CONTRACTOR INSTALLED  
 O/O - OWNER FURNISHED/OWNER INSTALLED  
 CONTRACTOR SHALL PROVIDE BLOCKING IN WALL AT ALL ACCESSORIES, SEE K18/AE501

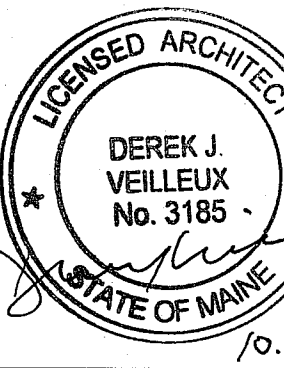
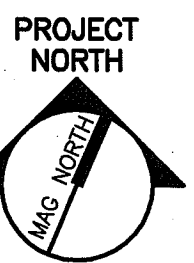


**A6 FLOOR PLAN**

1/4"=1'-0"

144 Fore Street/P.O. Box 618  
 Portland, Maine 04104  
 Tel. (207) 772-3946  
 Fax. (207) 772-1070  
 www.smrfinc.com

ARCHITECTURE  
 ENGINEERING  
 PLANNING  
 INTERIOR DESIGN  
 COMMISSIONING



**MAINE MEDICAL CENTER  
 NUCLEAR MEDICINE RENOVATIONS - PHASE 2**  
 PORTLAND, MAINE  
**ISSUED FOR CONSTRUCTION  
 10-10-14**

REV	DATE	DESCRIPTION
0	10-10-14	ISSUED FOR CONSTRUCTION

GRAPHIC SCALE:

SCALE: 1/4"=1'-0"  
 PROJECT MANAGER: DJV  
 JC/DRAWN BY: MDR  
 A/E OF RECORD: DJV  
 CAD FILE: AE101-14113  
 PROJECT NO: 14113  
 DATE: 10-10-14

SHEET TITLE:  
**FLOOR PLAN AND REFLECTED CEILING PLAN**

SHEET No.  
**AE101**  
 © COPYRIGHT 2013 SMRF INC.