

**RENOVATION SQUARE FOOTAGES:**

**GENERAL NOTES:**

1. SEE G1002 FOR GENERAL NOTES.

**APPLICABLE CODES:**

**GENERAL:**

- INTERNATIONAL BUILDING CODE (IBC) 2009 EDITION
- NFPA LIFE SAFETY CODE 101, 2000 and 2009 EDITION
- 2009 ADA STANDARDS FOR ACCESSIBLE DESIGN
- NFPA 1 Uniform Fire Code, 2006 and 2009
- GUIDELINES FOR DESIGN AND CONSTRUCTION OF HEALTH CARE FACILITIES, THE FACILITY GUIDELINES INSTITUTE, 2010 EDITION.

**MECHANICAL:**

- ASHRAE STANDARD 62.1-2007 - VENTILATION FOR ACCEPTABLE INDOOR AIR QUALITY
- ASHRAE STANDARD 90.1-2007 - ENERGY STANDARD FOR BUILDINGS EXCEPT LOW-RISE RESIDENTIAL BUILDINGS, EDITIONS WITHOUT ADDENDA.
- ME ELEVATOR CODE - ASME A17.1, 2007 EDITION.
- NFPA 90A - STANDARD FOR THE INSTALLATION OF AIR CONDITIONING AND VENTILATION SYSTEMS, 2009 EDITION.
- 2009 INTERNATIONAL ENERGY CONSERVATION CODE.
- NFPA 99 - STANDARD FOR HEALTH CARE FACILITIES - 1999 and 2005 EDITION.
- BOILER CODE- ASME BPC, SECTION 1-11(1998, 1999)
- MUBEC (MAINE UNIFORM BUILDING & ENERGY CODE)

**PLUMBING:**

- MAINE STATE INTERNAL PLUMBING CODE, LATEST EDITION (BASED ON 2009 IAPMO)
- NFPA 54 - NATIONAL FUEL GAS CODE, 1999 and 2009 EDITION
- NFPA 13 - INSTALLATION OF SPRINKLER SYSTEMS - 1999 and 2007 EDITION.

**ELECTRICAL:**

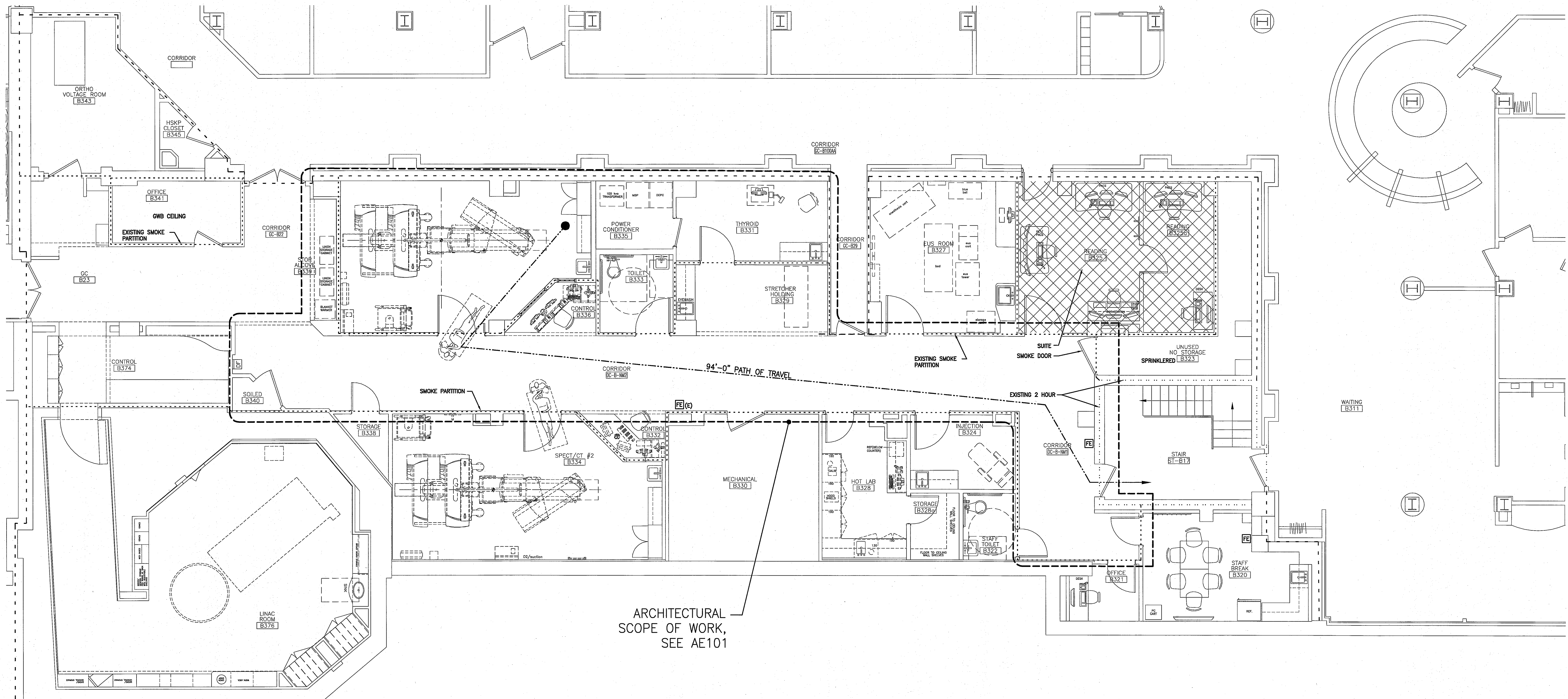
- NFPA 70 NATIONAL ELECTRICAL CODE 2008 EDITION.
- NFPA 72 NATIONAL FIRE ALARM CODE 2007 EDITION
- NFPA 110 STANDARD FOR EMERGENCY AND STANDBY POWER SYSTEMS, 2005 EDITION.

**CODE COMPLIANCE STRATEGY NOTES:**

1. BUILDING CONSTRUCTION TYPE: II (2,2,2)
2. LIFE SAFETY CODE OCCUPANCY: AMBULATORY HEALTHCARE
3. MAX PATH OF TRAVEL = 150 FEET
4. DEAD END LIMIT @ NEW CORRIDOR = 30'-0" (NFPA 101: 19.2.5.2)
5. COMMON PATH OF TRAVEL LIMIT= NO REQUIREMENT(NFPA 101: TABLE A.7.6)
6. A U.L. LISTED THROUGH-PENETRATION FIRESTOP SYSTEM SHALL BE PROVIDED AT ALL PENETRATIONS REQUIRED BY ANY TRADE, THROUGH A FIRE OR SMOKE RATED ASSEMBLY. THE U.L. LISTED THROUGH-PENETRATION FIRESTOP SYSTEM PROVIDED SHALL MEET THE RATING REQUIREMENTS OF THE FIRE OR SMOKE RATED ASSEMBLY PENETRATED.
7. WHERE MULTIPLE CODE EDITIONS ARE NOTED, CONTRACTOR TO PROVIDE WORK IN ACCORDANCE TO THE MORE STRINGENT.

**LEGEND**

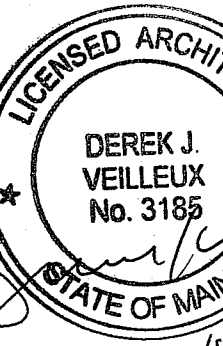
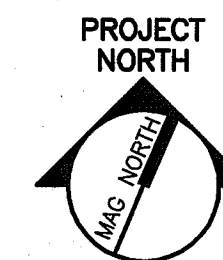
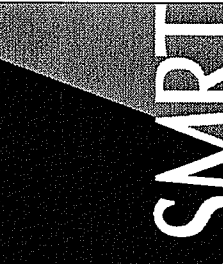
- 2 HOUR RATED WALL
- SMOKE PARTITION
- SMOKE BARRIER
- FIRE EXTINGUISHER [FE]
- SUITE



ARCHITECTURAL SCOPE OF WORK, SEE AE101

144 Fore Street/P.O. Box 618  
Portland, Maine 04104  
tel. (207) 772-3846  
fax. (207) 772-1070  
www.smartinc.com

ARCHITECTURE  
ENGINEERING  
PLANNING  
INTERIOR DESIGN  
COMMISSIONING



MAINE MEDICAL CENTER  
NUCLEAR MEDICINE RENOVATIONS - PHASE 2  
PORTLAND, MAINE  
ISSUED FOR CONSTRUCTION  
10-10-14

REV	DESCRIPTION	DATE
0	ISSUED FOR CONSTRUCTION	10-10-14

GRAPHIC SCALE:  
0" 1"

SCALE: 3/16"=1'-0"  
PROJECT MANAGER: DJV  
JIC/DRAWN BY: MDR  
A/E OF RECORD: DJV  
CAD FILE: A-100-13128  
PROJECT NO: 14113  
DATE: 10-10-14

SHEET TITLE:  
PARTIAL FACILITY AND CODE COMPLIANCE PLAN

SHEET No.  
A-100  
© COPYRIGHT 2013 SMART INC.