



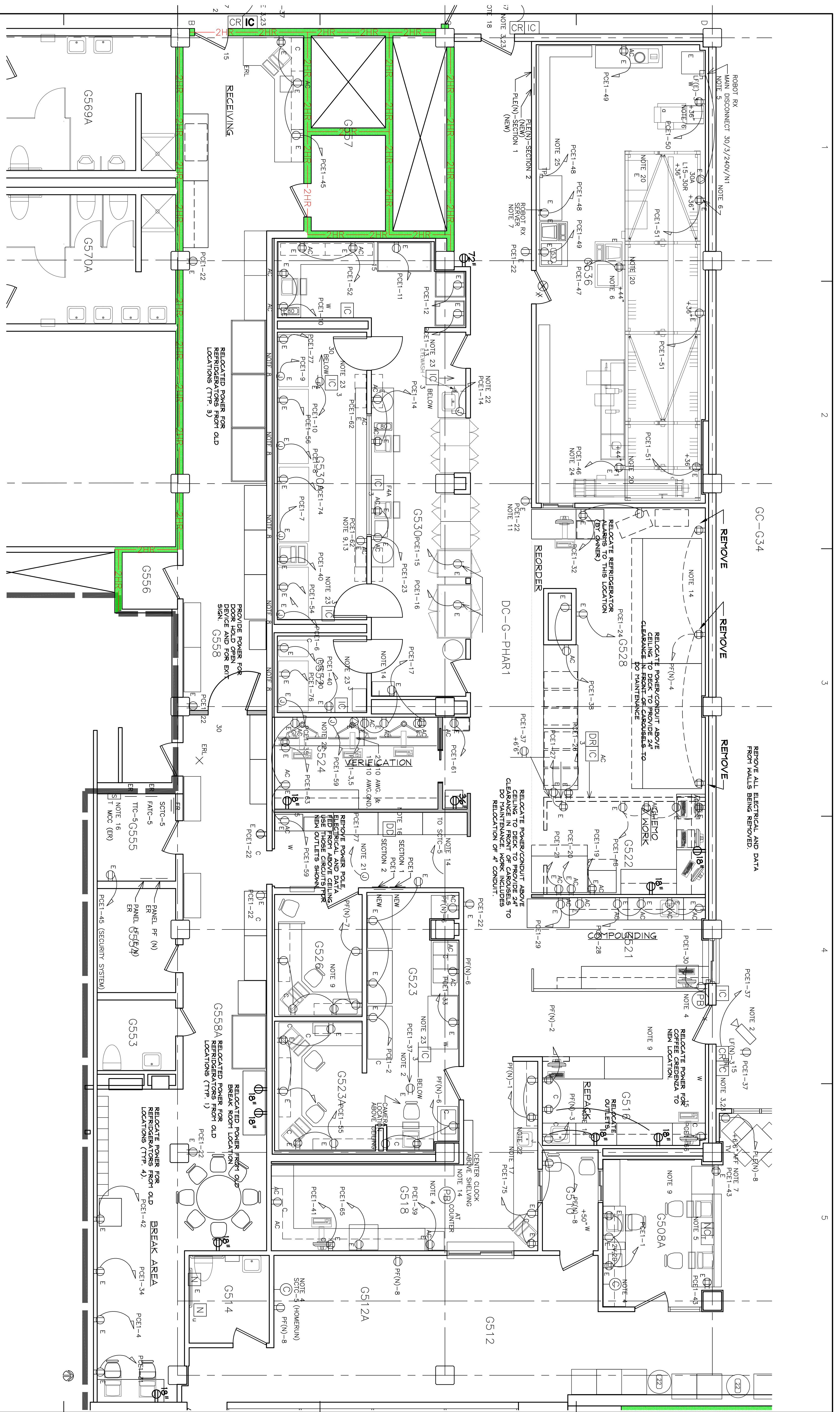
Maine Medical Center
 22 Bramhall Street
 Portland, ME 04102-3175
 Facilities Development
 207-662-2013

CONSULTANTS

PHARMACY RENOVATION
 NDF BUILDING
 22 BRAMHALL ST. PORTLAND, ME

DATE	APRIL 23, 2010
DESCRIPTION	
ISSUE	FOR BID
PROJECT NO.	210022
CAD DWG FILE:	
DRAWN BY:	RJS
CHECKED BY:	
SHEET TITLE	ELECTRICAL PLAN

Sheet **E17** of 7



PROVIDE 208- 230 VAC 60 HZ 3 PHASE 20 AMP CIRCUIT, 5 WIRE GROUND ED
 EMERGENCY POWER WITH EXTERNAL DISCONNECT AND PROVIDE SEPARATE 10
 VAC 20 AMP SERVICE WITH 8 OUTLETS ON EMERGENCY POWER ONE EACH
 FOR 3 NEW CAROUSELS

ELECTRICAL PLAN

SCALE : 1/4" = 1' - 0"

GENERAL NOTES:
 1. NEW WORK SHOWN BOLD.
 2. EXISTING EQUIPMENT TO REMAIN UNLESS NOTED IN
 BOLD. SHOWN FOR REFERENCE ONLY.

