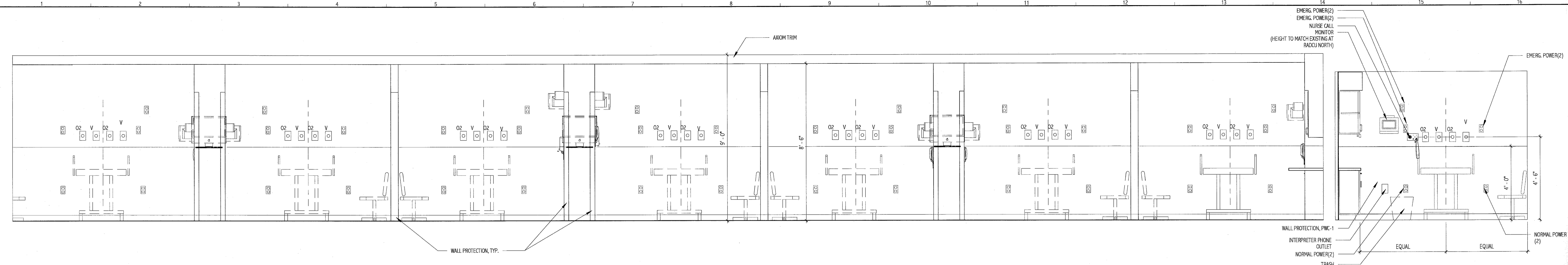


144 Fern Street, P.O. Box 618
 Portland, Maine 04103
 Tel. (207) 772-2846
 Fax. (207) 772-0701
 www.mprinc.com

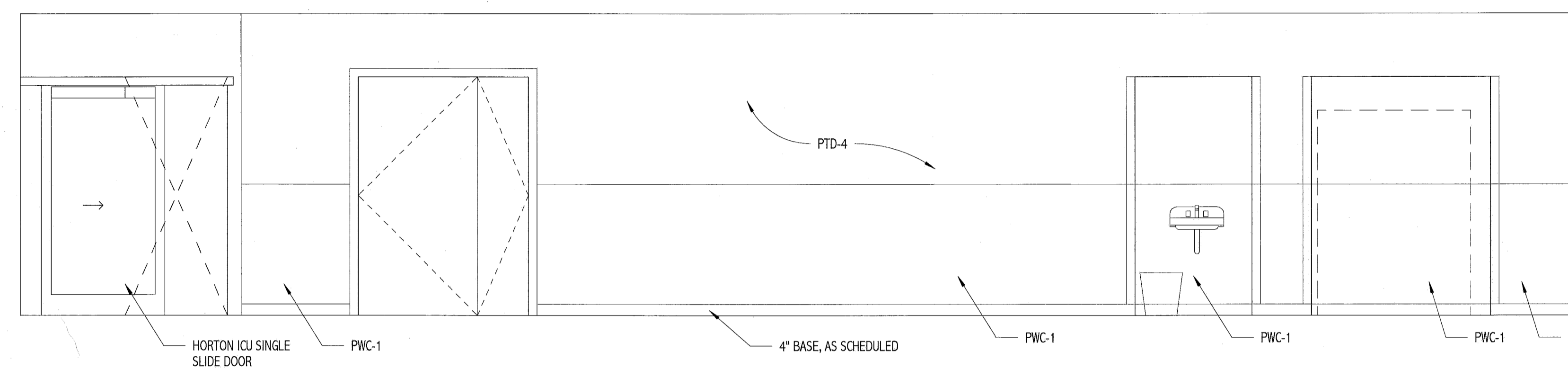
ARCHITECTURE
 ENGINEERING
 PLANNING
 INTERIOR DESIGN
 COMMISSIONING

SMART

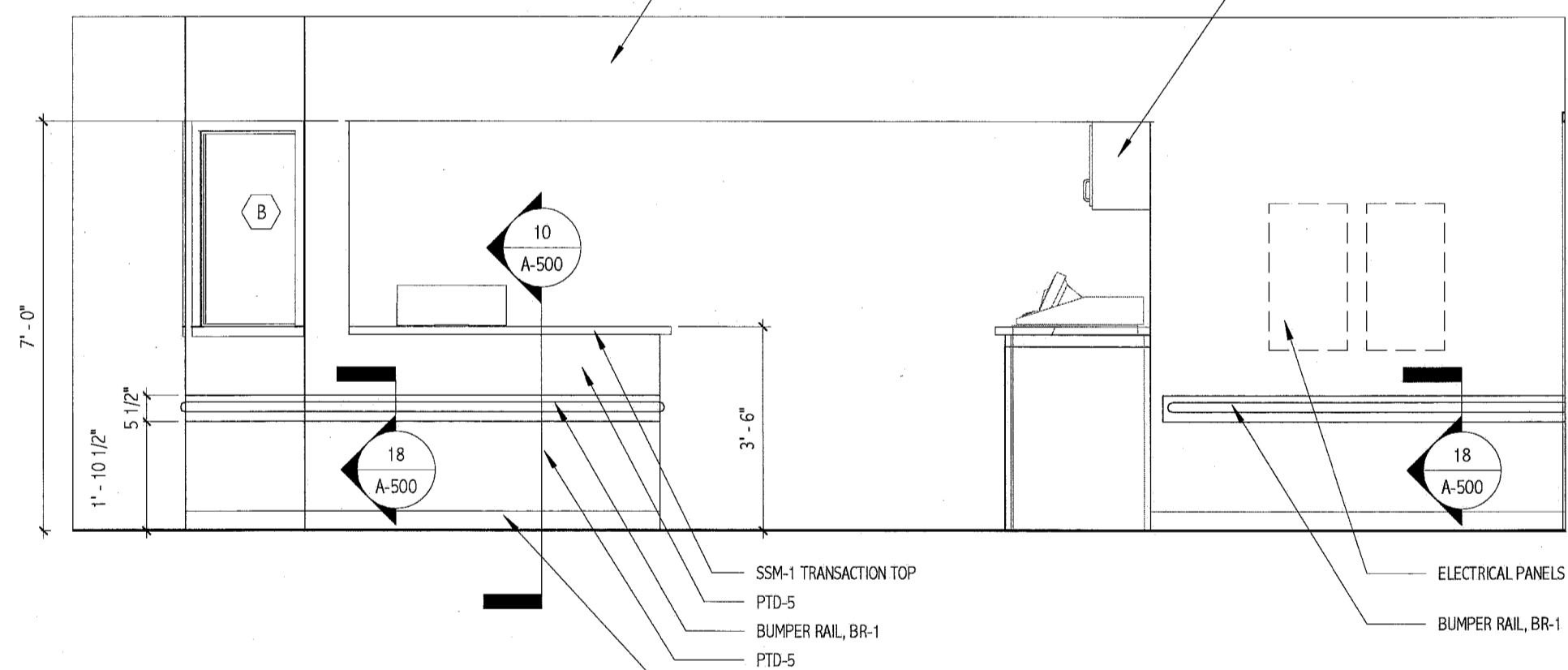
LICENSED ARCHITECT
 KRISTEN L. DAMUTH
 No. 2728
 STATE OF MAINE
 24 Feb 12



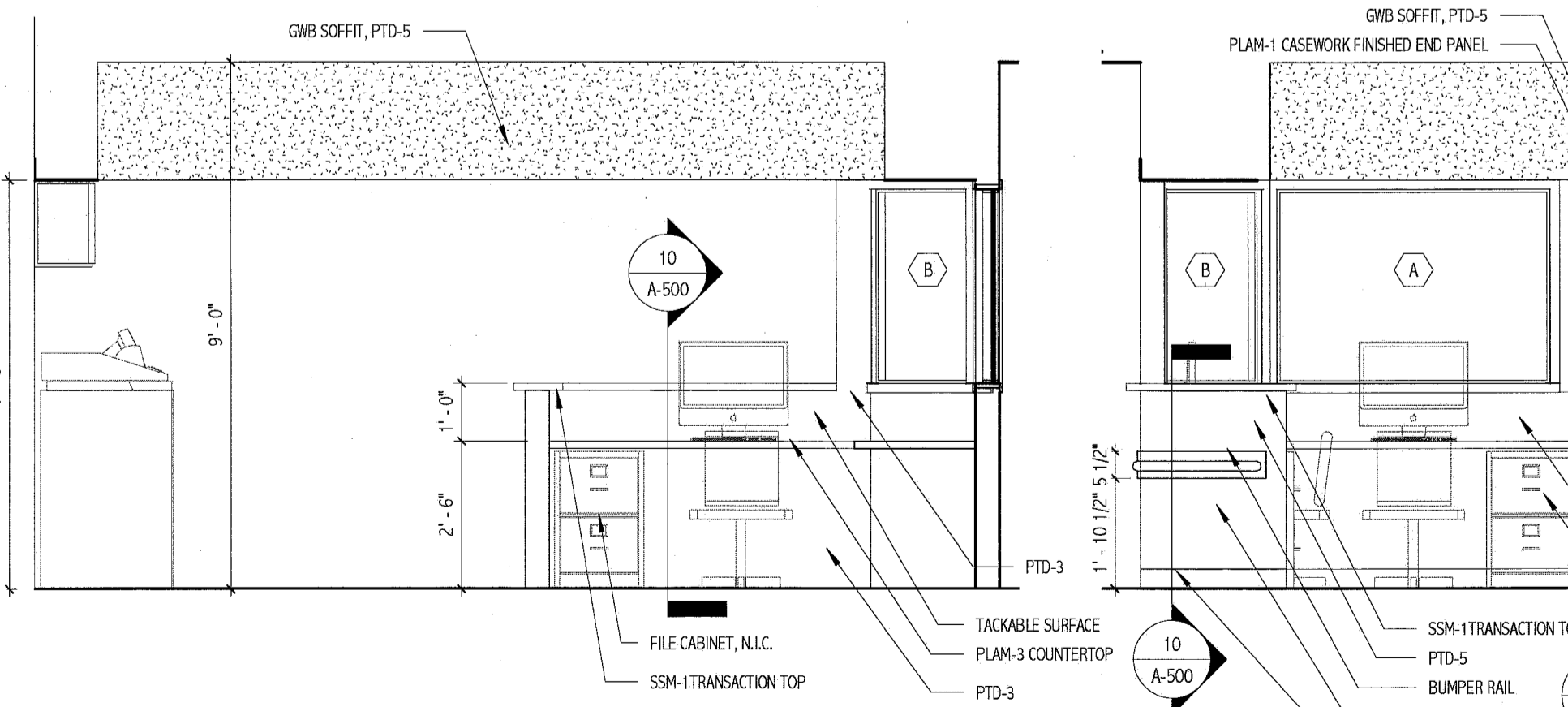
14) HOLDING - SOUTH
 3/8" = 1'-0"



10) Elevation 2 - a
 3/8" = 1'-0"



7) NURSE STATION
 3/8" = 1'-0"



1) NURSE STATION
 3/8" = 1'-0"

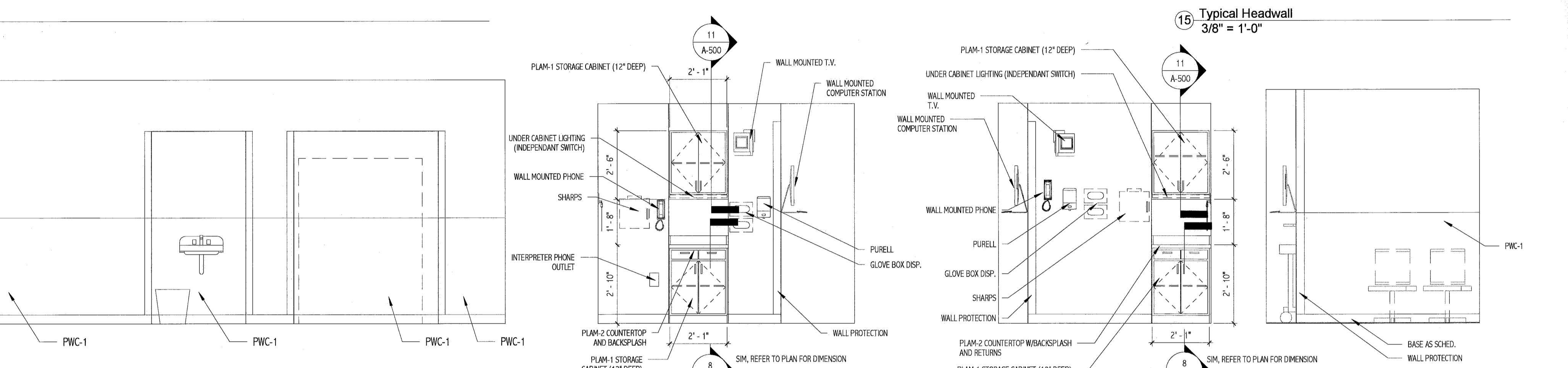
2) NURSE STATION
 3/8" = 1'-0"

3) SOIL ALCOVE - A
 3/8" = 1'-0"

4) NOURISHMENT
 3/8" = 1'-0"

5) NOURISHMENT - 2
 3/8" = 1'-0"

6) WORK AREA
 3/8" = 1'-0"

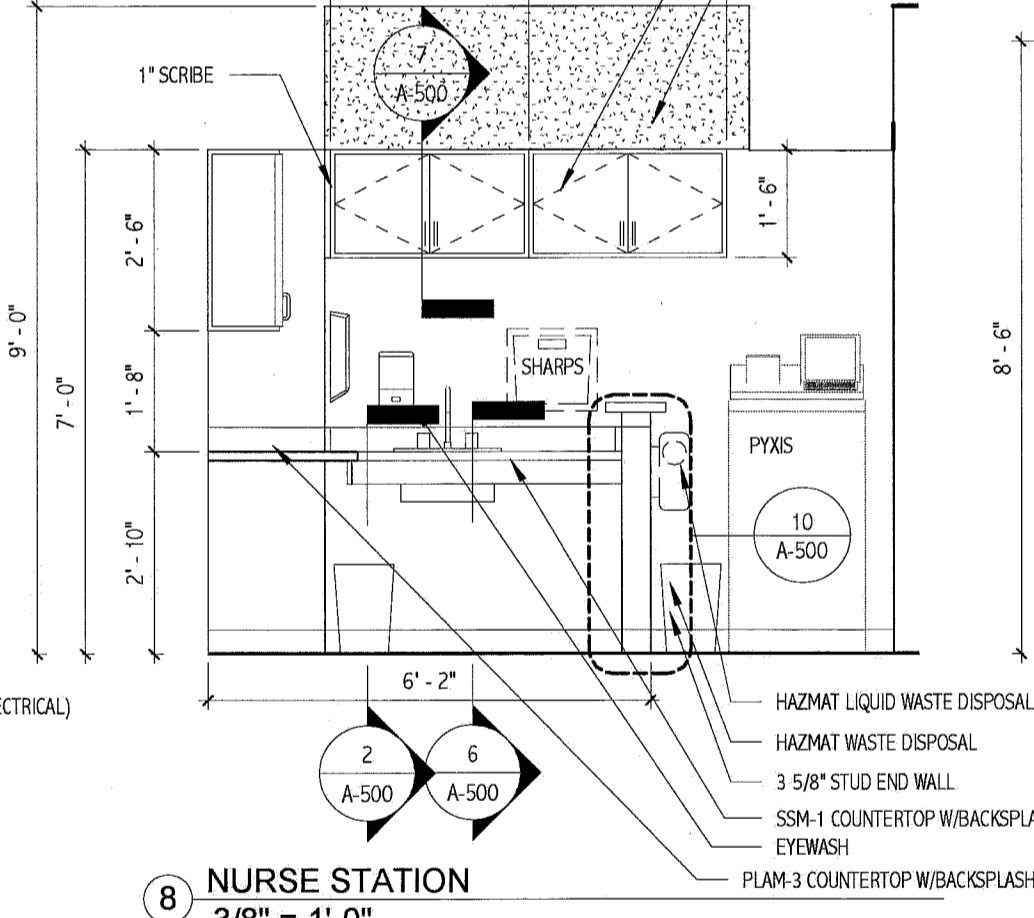


15) Typical Headwall
 3/8" = 1'-0"

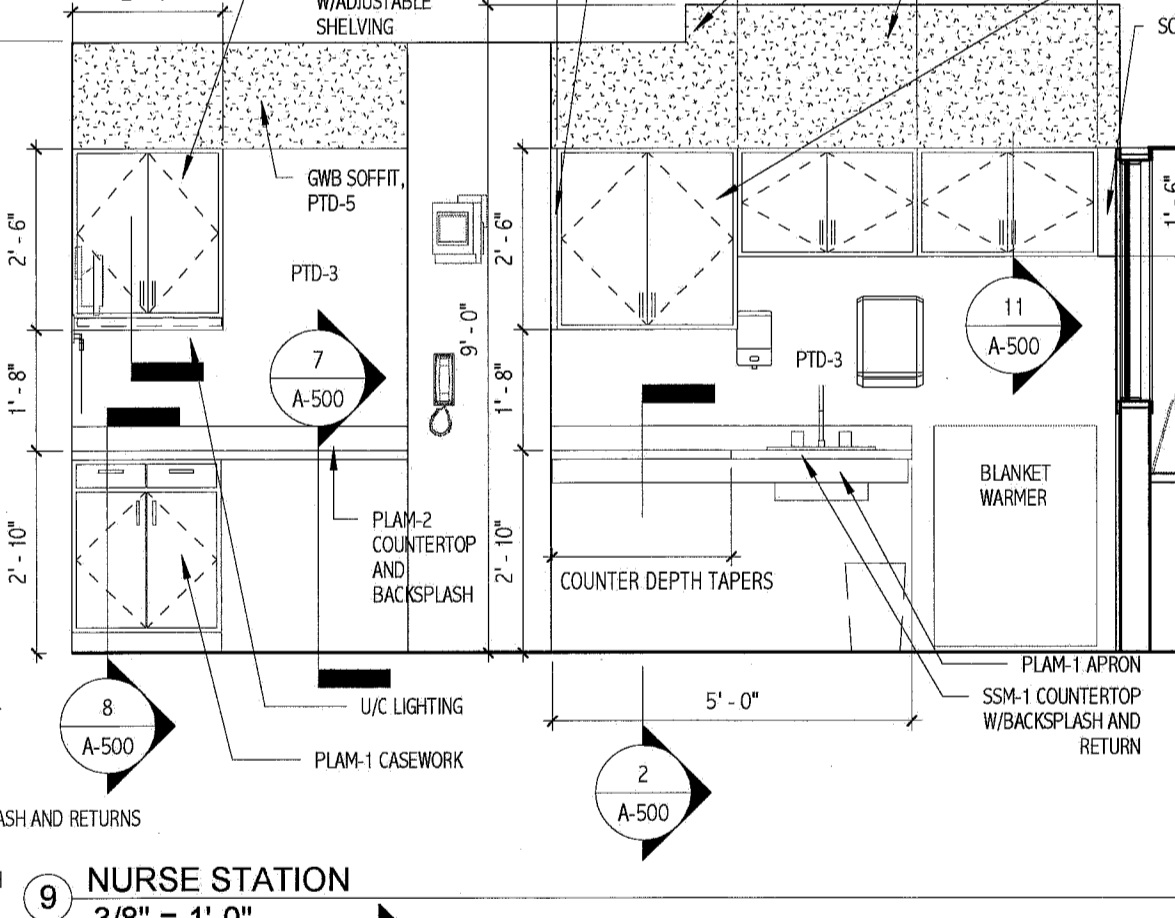
11) TYPICAL RADCU STAFF WALL (A)
 3/8" = 1'-0"

12) TYPICAL RADCU STAFF WALL (B)
 3/8" = 1'-0"

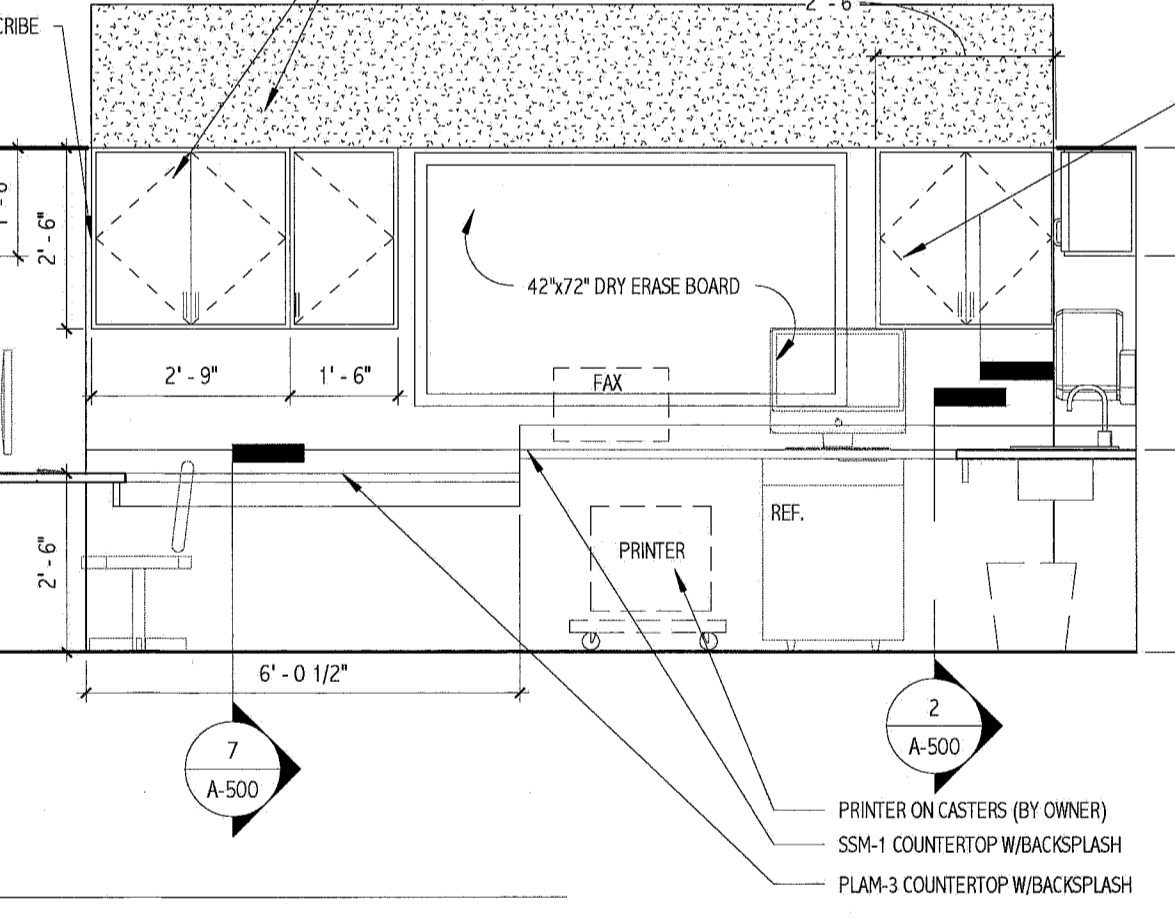
13) TYPICAL RADCU GUEST WALL
 3/8" = 1'-0"



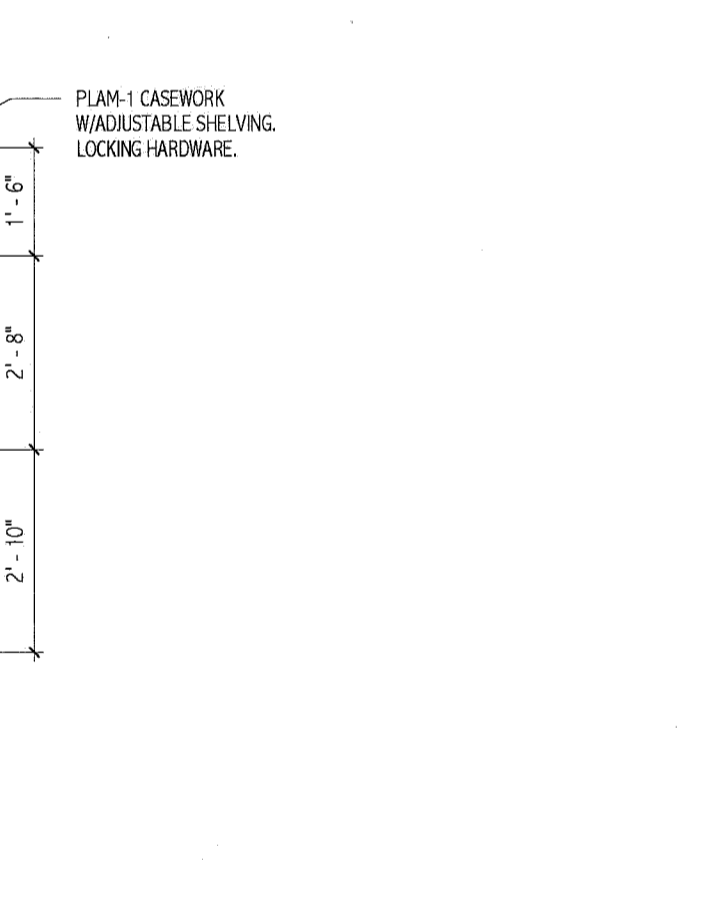
8) NURSE STATION
 3/8" = 1'-0"



9) NURSE STATION
 3/8" = 1'-0"



7) NURSE STATION
 3/8" = 1'-0"



2) NURSE STATION
 3/8" = 1'-0"

GENERAL ELEVATION NOTES:

- SEE A-001 FOR MOUNTING HEIGHTS.
- CONTRACTOR TO FIELD VERIFY ALL DIMENSIONS.
- CONCEALED CABINET INTERIORS TO BE WHITE MELAMINE. EXPOSED CABINET INTERIORS TO MATCH CABINET PLAM.
- ALL DOORS AND DRAWERS SHALL BE EDGE BANDED WITH PLAM TO MATCH FACE.
- GRAIN DIRECTION OF WOOD-GRAIN PLAM SHALL BE VERTICAL ON ALL DOORS AND DRAWERS.
- FURNITURE SHOWN FOR INFORMATION AND COORDINATION PURPOSES ONLY. PROVIDE BLOCKING AND POWER AS REQUIRED.
- FOR CASEWORK, SEE A-500 FOR MORE INFORMATION.
- SEE FINISH SCHEDULE FOR MORE INFORMATION REGARDING FINISHES. SEE A-600.

CASEWORK HARDWARE NOTES:

- PROVIDE PRODUCTS LISTED BELOW OR SUBMIT ALTERNATE PRODUCTS FOR APPROVAL.
- SURFACE DOOR PULLS TO BE HAFELE #115.60.602 SATIN FINISHED STAINLESS STEEL BOW PULLS.
- HINGES TO BE BLUM CLIP TOP 120 DEGREE CONCEALED EUROPEAN STYLE HINGE.
- FULL-EXTENSION DRAWER SLIDES TO BE KNAPE & VOGT #4000 SERIES WITH WHITE EPOXY FINISH.
- CLOSET RODS TO BE KNAPE & VOGT #770-5 HEAVY DUTY 1-5/16\"/>
- ADJUSTABLE SHELF PINS TO BE KV #345 NP.
- COUNTERTOP SUPPORT BRACKETS TO BE RAKS BRACKET. MODEL NUMBER SHOULD BE DETERMINED BY COUNTERTOP SIZE AND COUNTERTOP LOAD.

MAINE MEDICAL CENTER
 HOLDING, RADCU & PBC RENOVATION
 PORTLAND, ME

DATE	DESCRIPTION	REV

GRAPHIC SCALE:
 0" 1"

SCALE: As indicated
 PROJECT MANAGER: KD
 I.C. DRAWN BY: ART
 A.E. OF RECORD: KD
 PROJECT NO.: 11053
 DATE: 2.24.12

SHEET TITLE:
INTERIOR ELEVATIONS

SHEET NO.
A-200