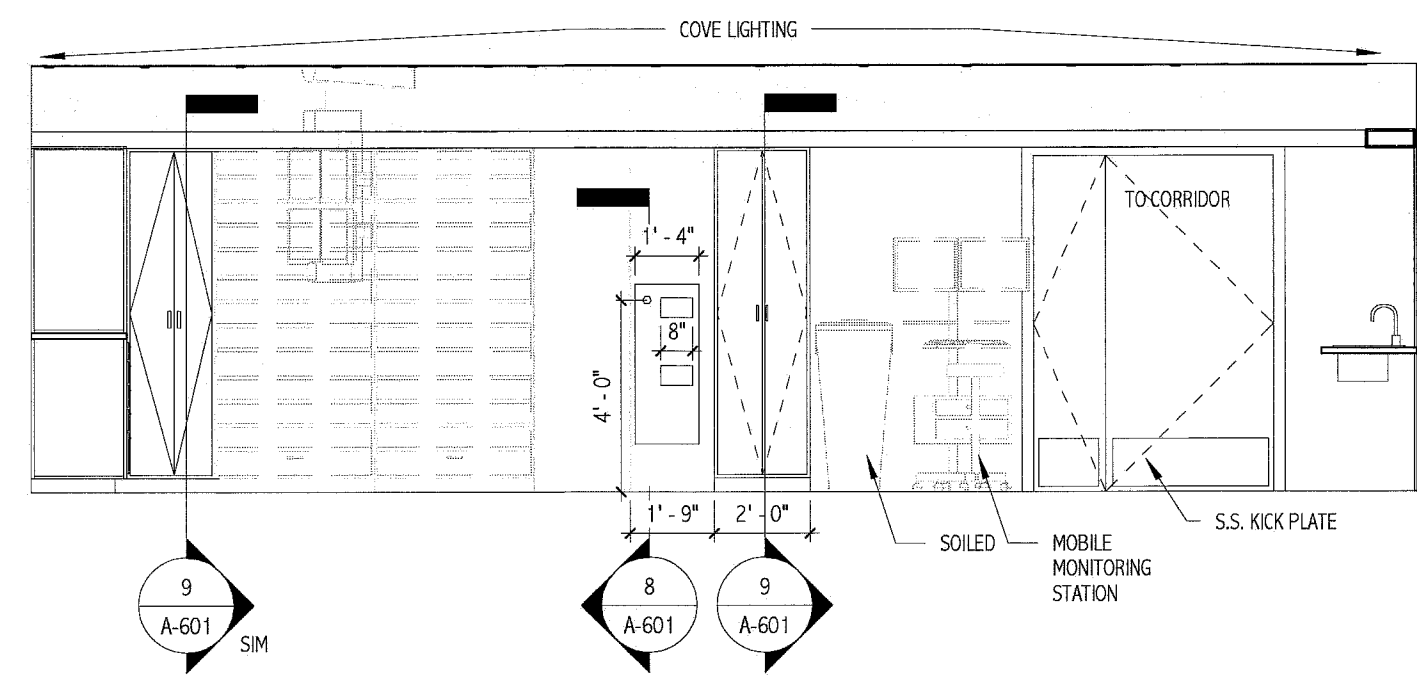
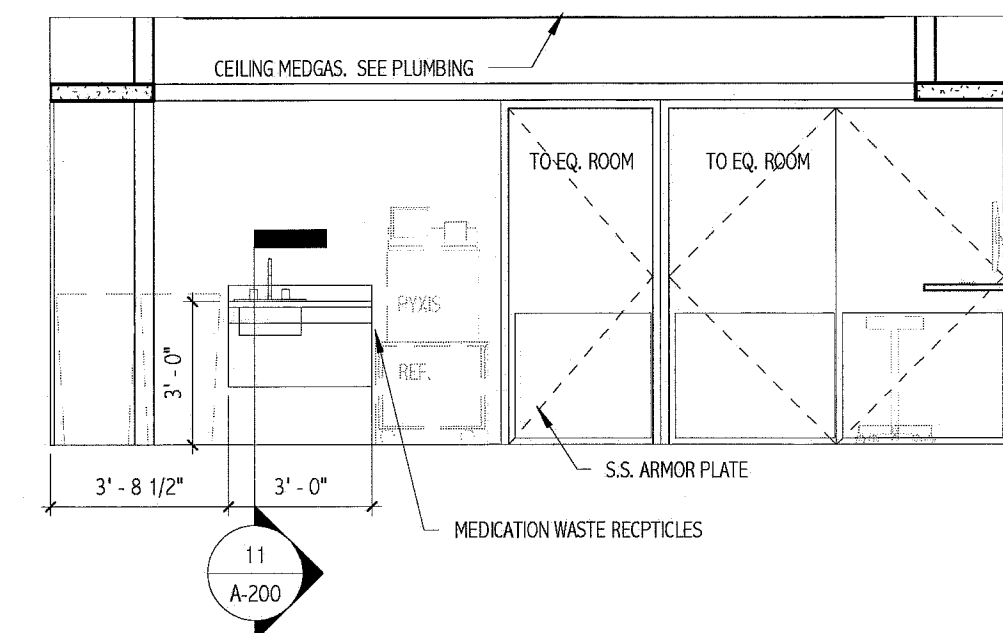


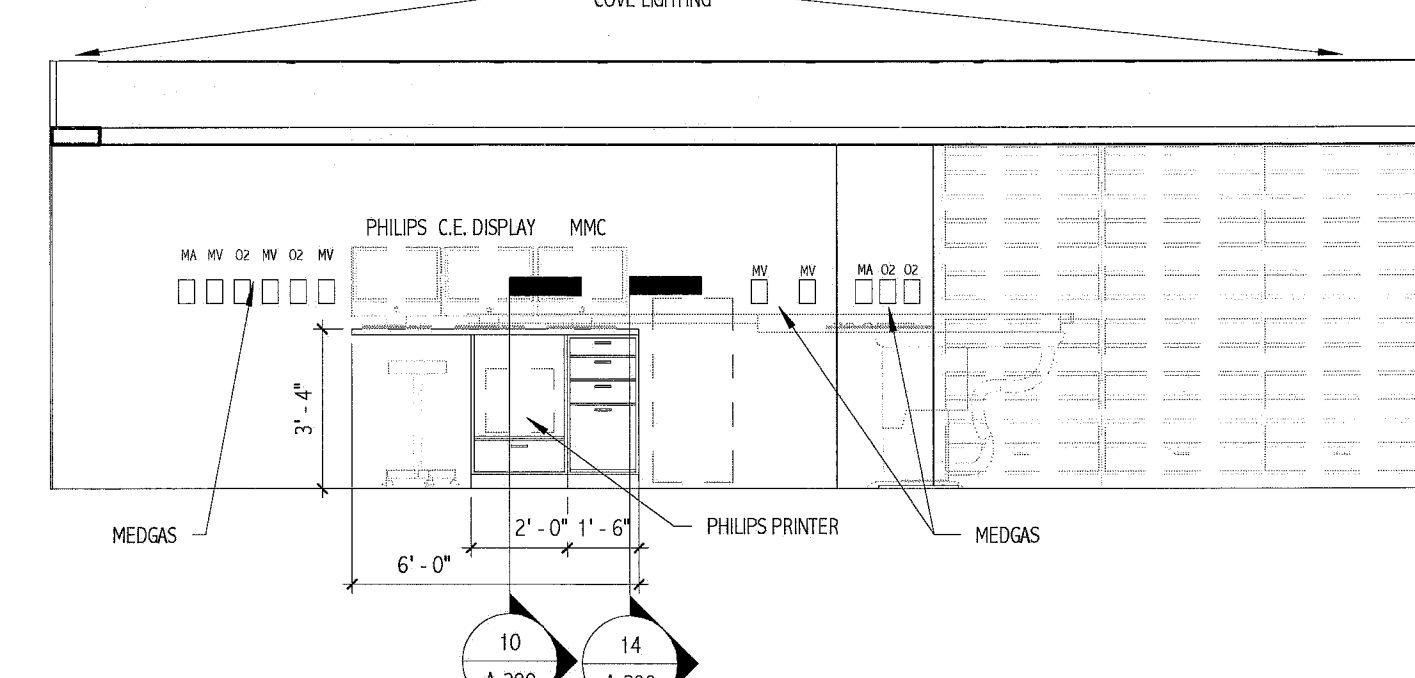
1 PROCEDURE ROOM - A
1/4" = 1'-0"



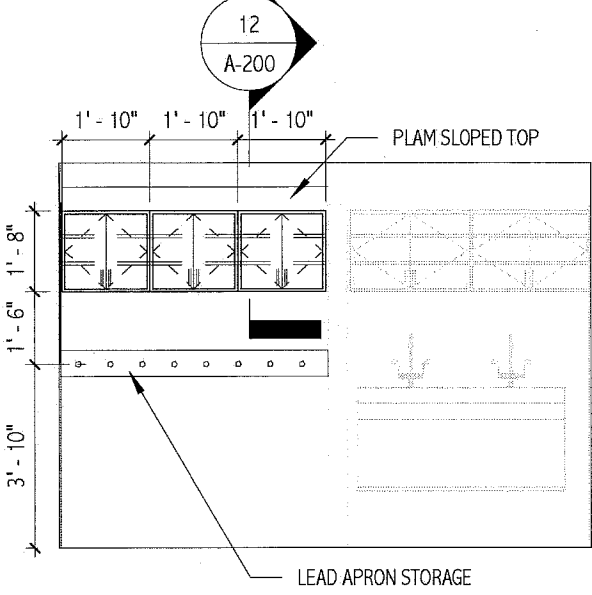
2 PROCEDURE ROOM - B
1/4" = 1'-0"



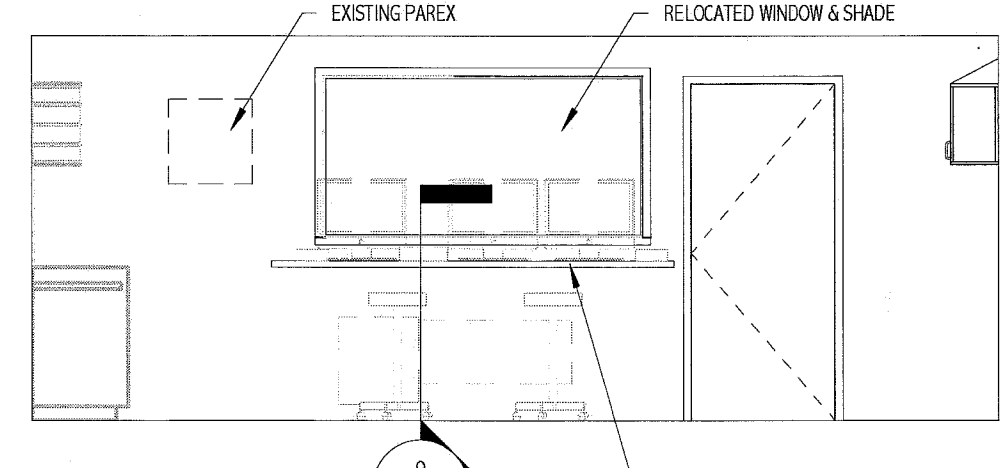
3 PROCEDURE ROOM - C
1/4" = 1'-0"



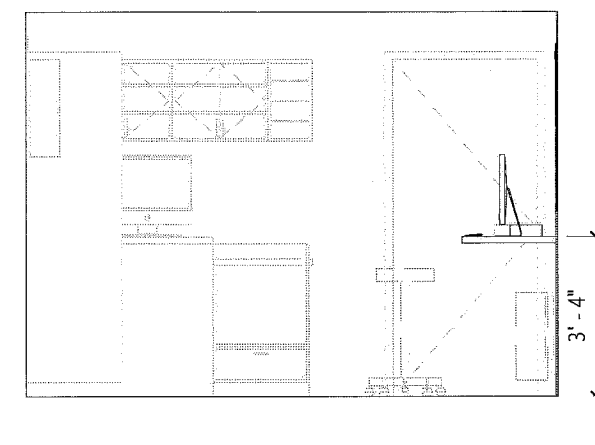
4 PROCEDURE ROOM - D
1/4" = 1'-0"



6 CONTROL ROOM - A
1/4" = 1'-0"



5 CONTROL ROOM - B
1/4" = 1'-0"



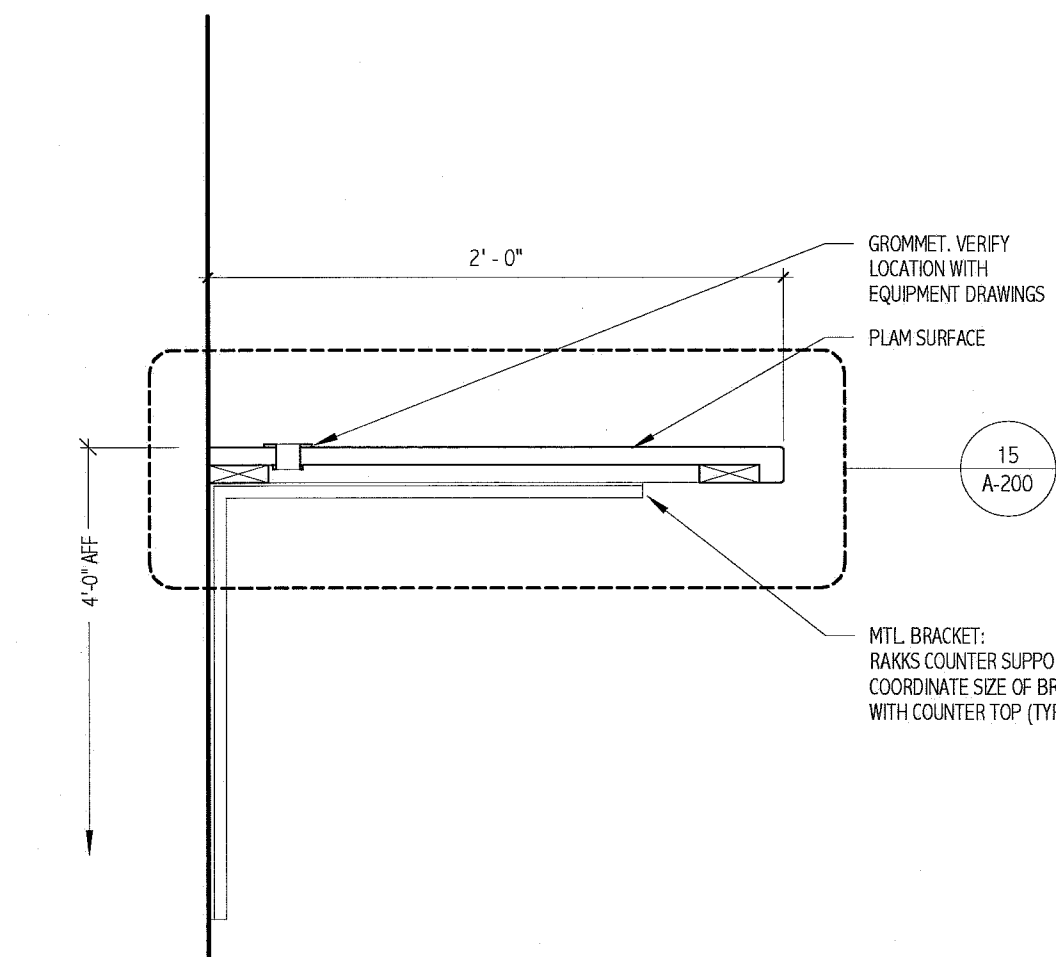
7 CONTROL ROOM - C
1/4" = 1'-0"

GENERAL ELEVATION NOTES:

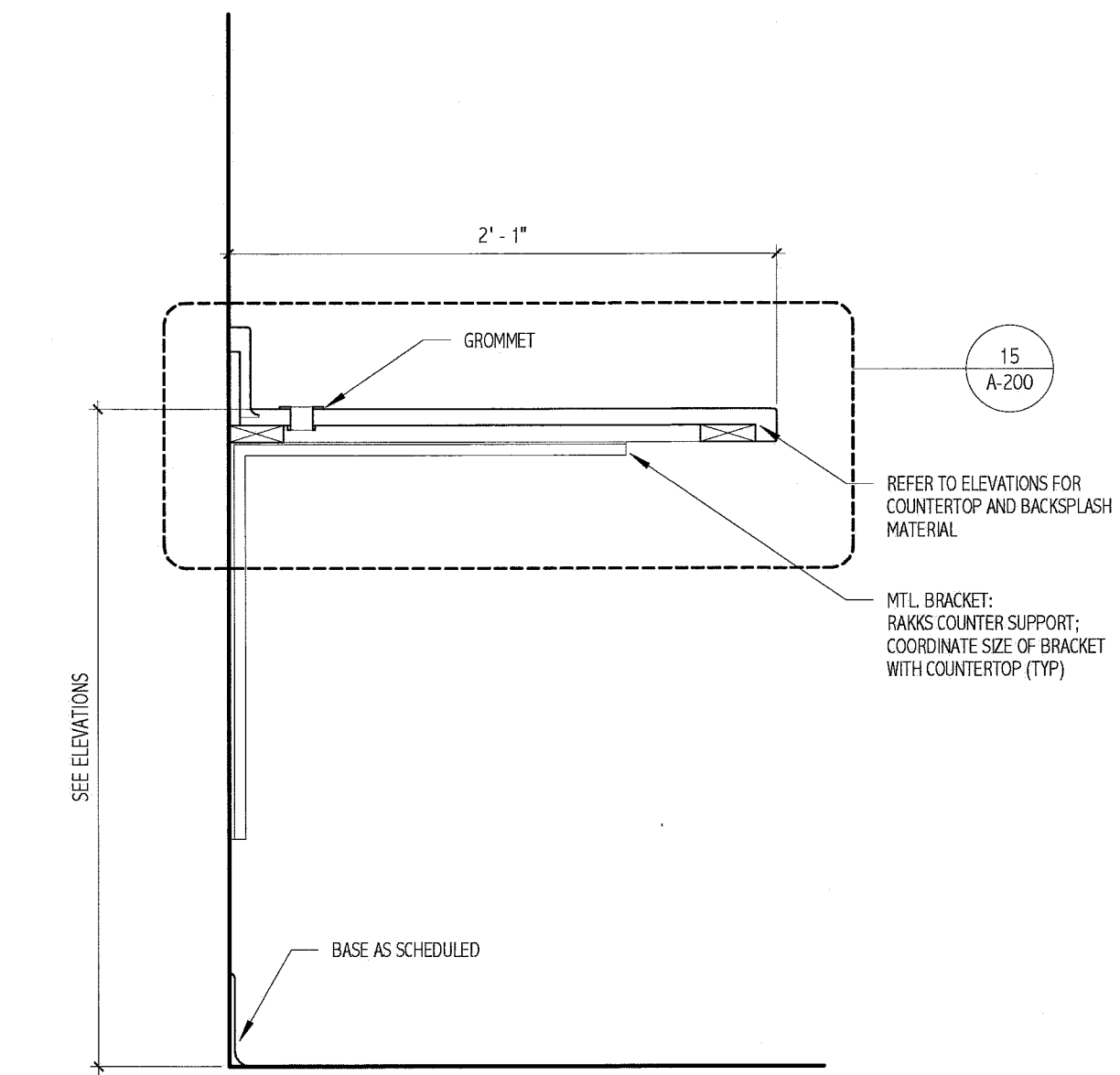
- SEE A-001 FOR MOUNTING HEIGHTS.
- CONTRACTOR TO FIELD VERIFY ALL DIMENSIONS.
- CONCEALED CABINET INTERIORS TO BE WHITE MELAMINE. EXPOSED CABINETS INTERIORS TO MATCH CABINET PLAM.
- ALL DOORS AND DRAWERS SHALL BE EDGE BANDED WITH PLAM TO MATCH FACE.
- GRAIN DIRECTION OF WOOD-GRAIN PLAM SHALL BE VERTICAL ON ALL DOORS AND DRAWERS.
- FURNITURE SHOWN FOR INFORMATION AND COORDINATION PURPOSES ONLY. PROVIDE BLOCKING AND POWER AS REQUIRED.
- FOR CASEWORK, SEE A-500 FOR MORE INFORMATION.
- SEE FINISH SCHEDULE FOR MORE INFORMATION REGARDING FINISHES. SEE A-600.

CASEWORK HARDWARE NOTES:

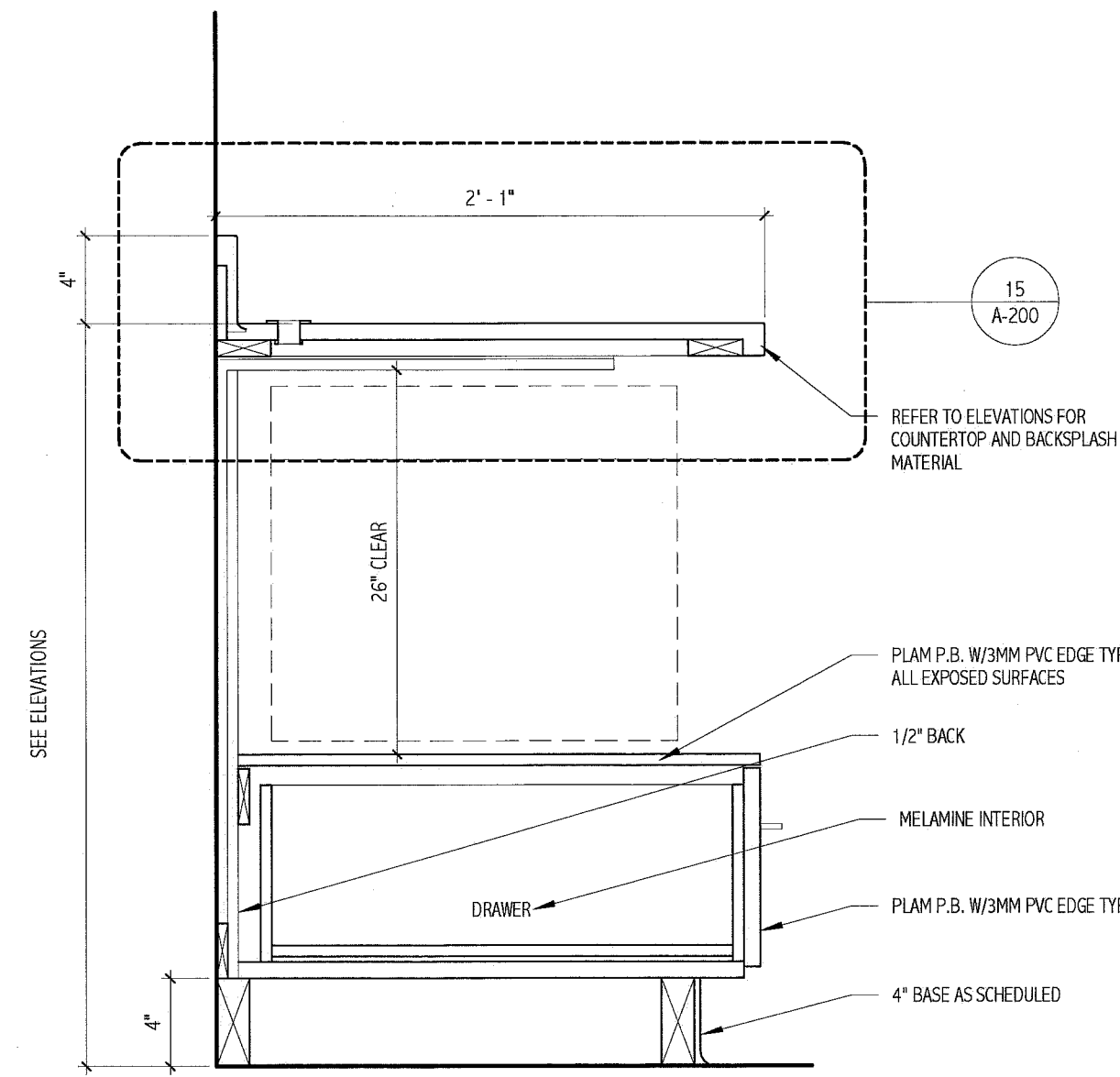
- PROVIDE PRODUCTS LISTED BELOW OR SUBMIT ALTERNATE PRODUCTS FOR APPROVAL.
- SURFACE DOOR PULLS TO BE HAFELE #115.60.60Z SATIN FINISHED STAINLESS STEEL BOW PULLS.
- HINGES TO BE BLUM CLIP TOP 120 DEGREE CONCEALED EUROPEAN-STYLE HINGE.
- FULL-EXTENSION DRAWER SLIDES TO BE HMAPE & VOGT #8400 SERIES WITH WHITE EPOXY FINISH.
- CLOSET RODS TO BE HMAPE & VOGT #770-5 HEAVY DUTY 1-5/16" O.D. STEEL TUBE W/ CHROME FINISH. FLANGES TO BE NY #764 & 766.
- ADJUSTABLE SHELF PINS TO BE NY #345 NP.
- COUNTERTOP SUPPORT BRACKETS TO BE RAKKS BRACKET. MODEL NUMBER SHOULD BE DETERMINED BY COUNTERTOP SIZE AND COUNTERTOP LOAD.



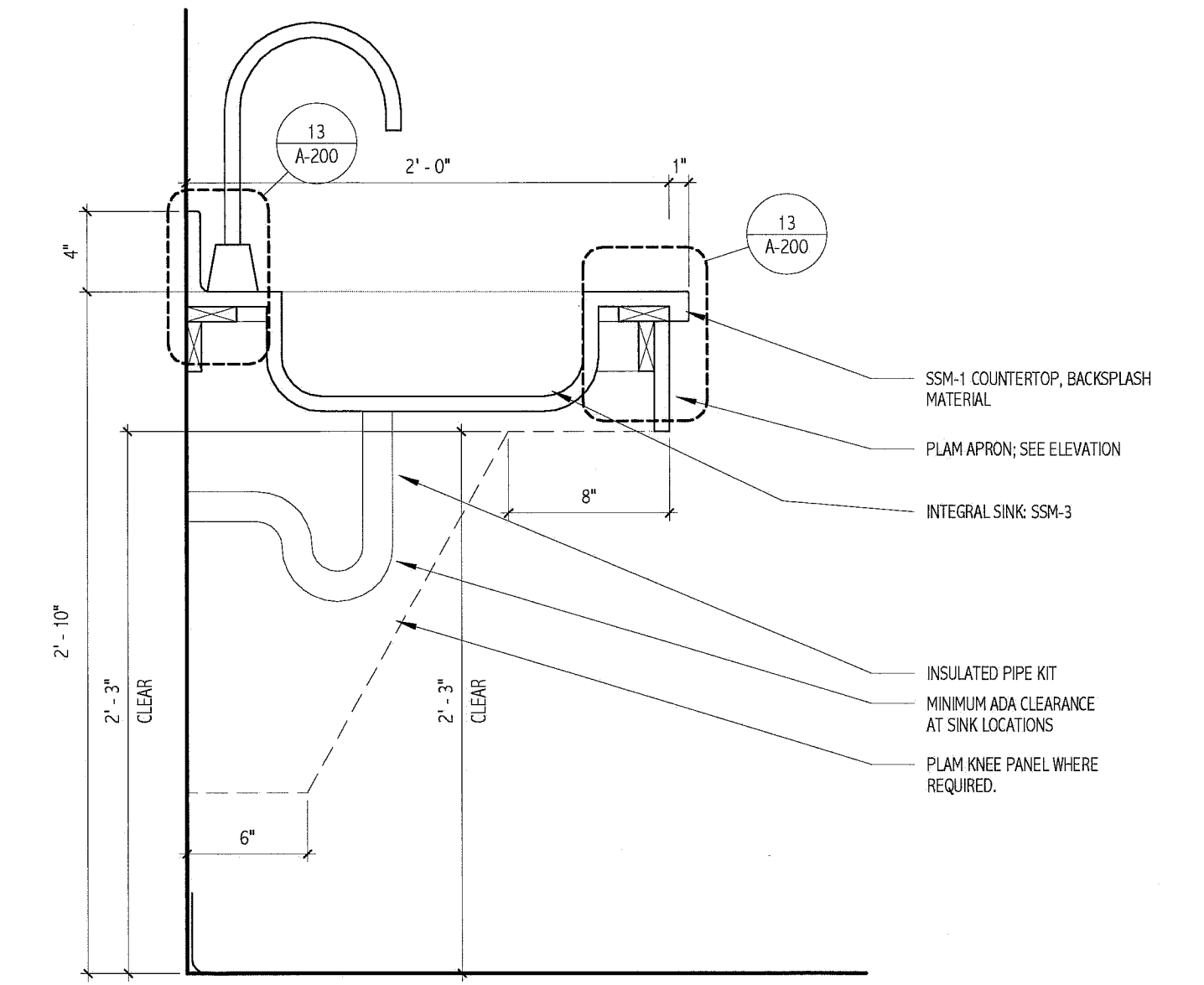
8 CASEWORK DETAIL
1 1/2" = 1'-0"



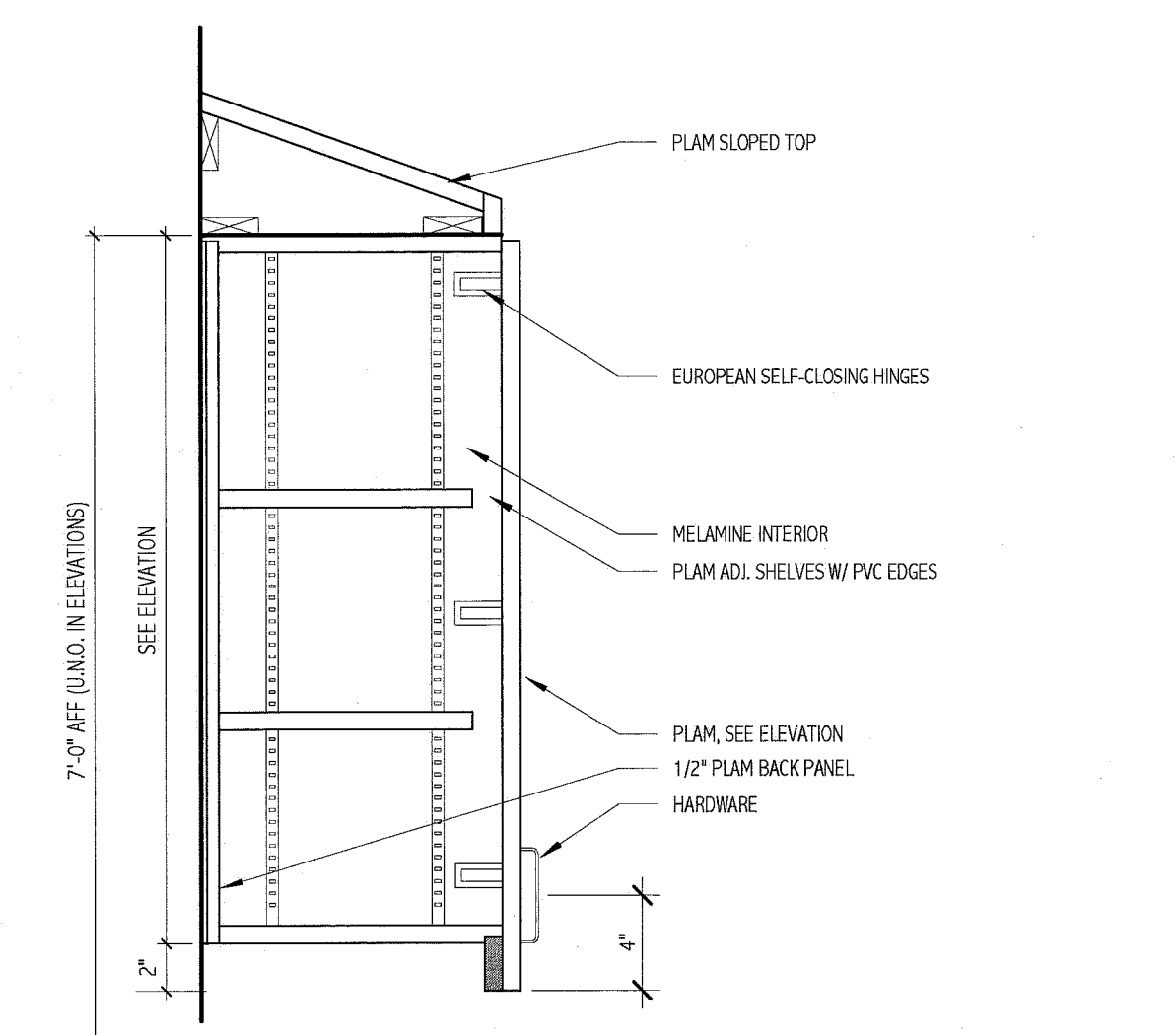
9 CASEWORK DETAIL
1 1/2" = 1'-0"



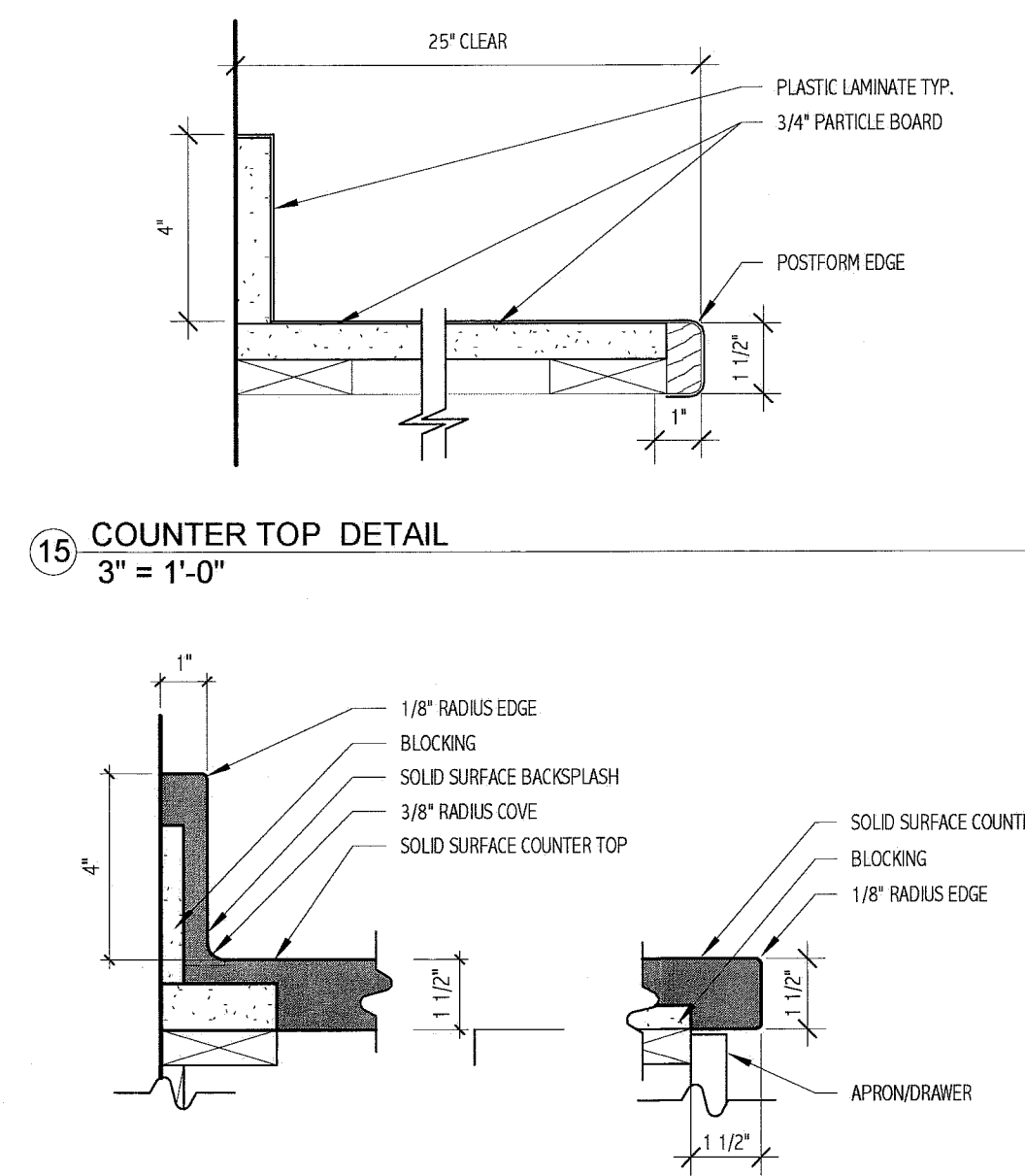
10 CASEWORK DETAIL
1 1/2" = 1'-0"



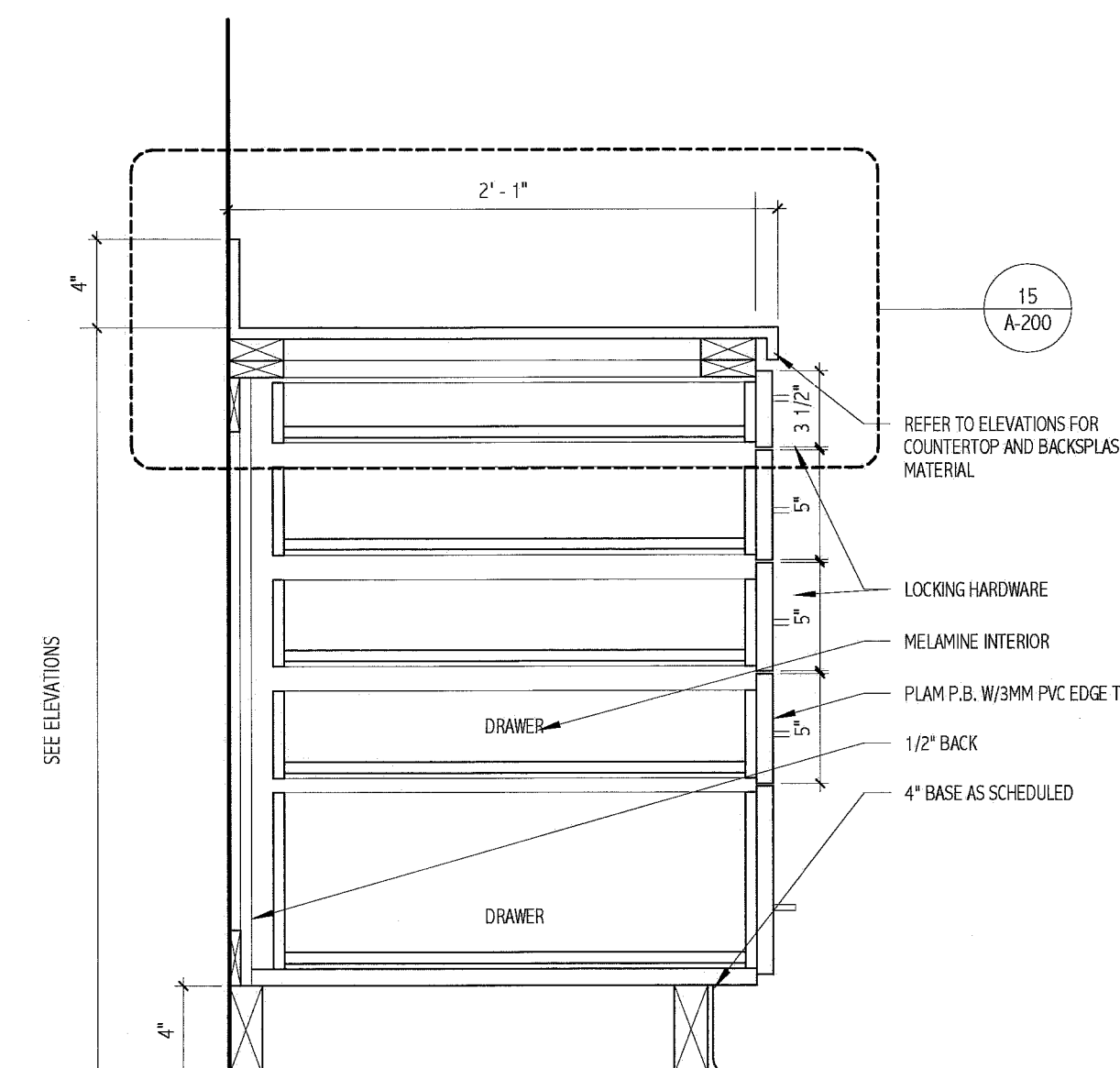
11 CASEWORK DETAIL
1 1/2" = 1'-0"



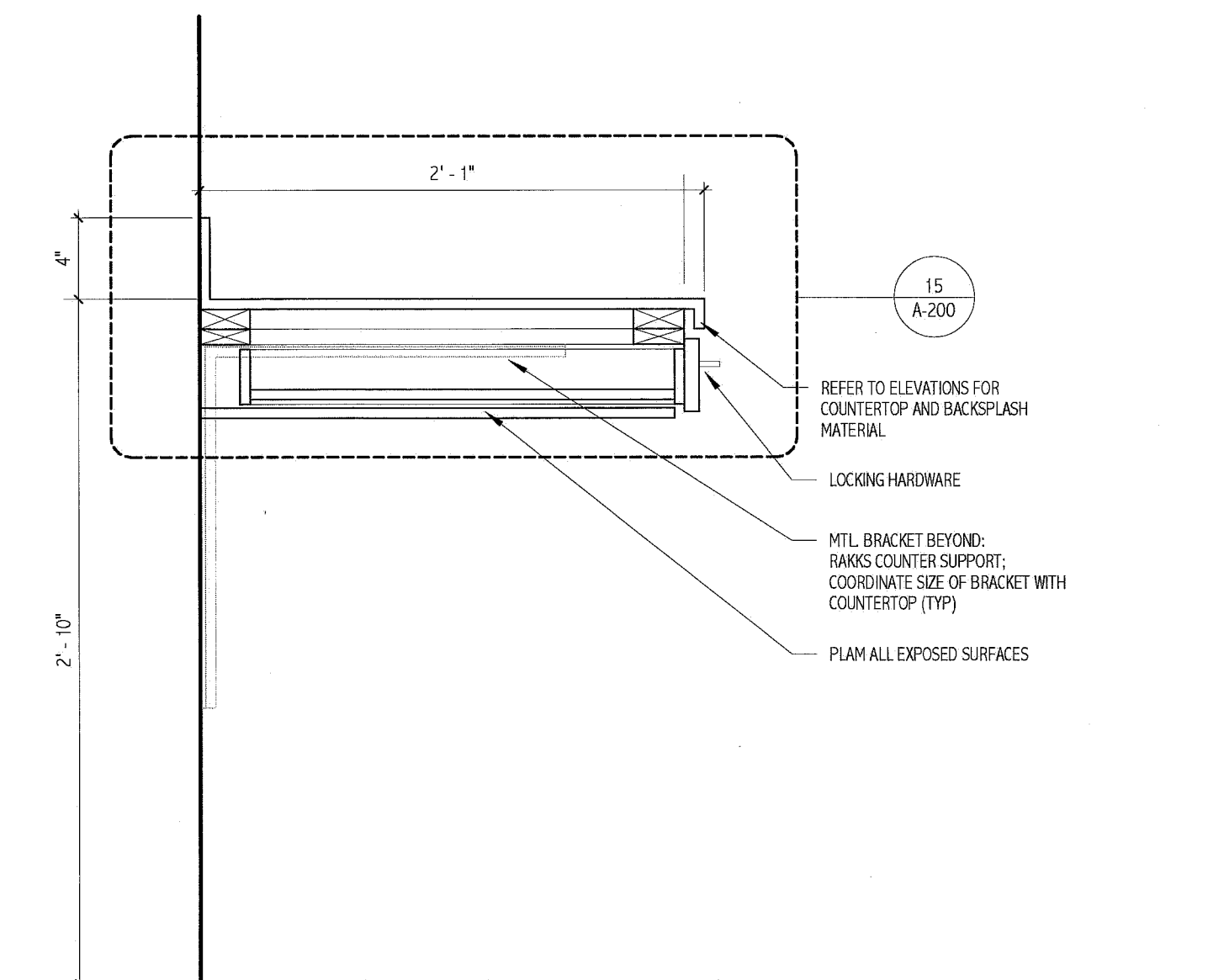
12 CASEWORK DETAIL
1 1/2" = 1'-0"



13 EDGE DETAIL
3" = 1'-0"



14 CASEWORK DETAIL
1 1/2" = 1'-0"



16 CASEWORK DETAIL
1 1/2" = 1'-0"

144 Free Street, Box 68
Portland, Maine 04104
Tel: (207) 772-3846
Fax: (207) 772-1007
www.smrtinc.com

ARCHITECTURE
ENGINEERING
PLANNING
INTERIOR DESIGN
COMMISSIONING

SMRT

LICENSED ARCHITECT
DEREK J. VEILLEUX
No. 3185
STATE OF MAINE
1.27.12

MAINE MEDICAL CENTER
ANGIO SINGLE PLANE - ROOM 2
PORTLAND, ME

ISSUED FOR PERMITTING
01.27.12

CURRENT ISSUE STATUS:
DATE
DESCRIPTION
REV

GRAPHIC SCALE:
0 1'

SCALE: As indicated

PROJECT MANAGER: DMV
DRAWN BY: ART
DATE OF RECORD: DMV
PROJECT NO: 11127
DATE: 8.24.10

SHEET TITLE:
INTERIOR
ELEVATIONS

SHEET No. A-200